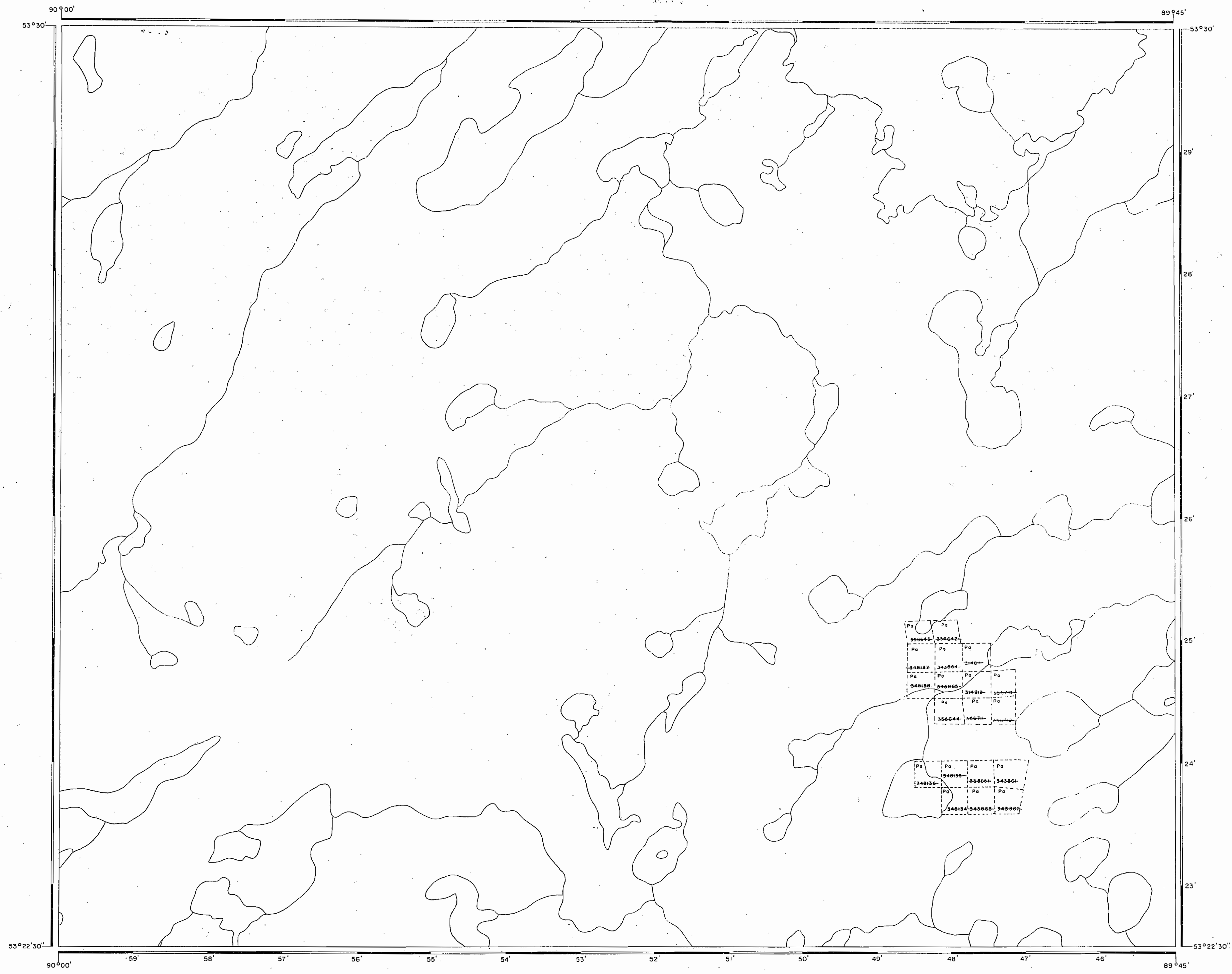


NEMEIGUSABINS LAKE M.2225



AREA
south of
NEMEIGUSABINS
LAKE

DISTRICT OF
KENORA
PATRICIA PORTION

PATRICIA
MINING DIVISION

SCALE: 1-INCH = 40 CHAINS

LEGEND

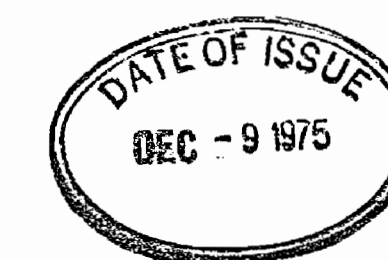
- PATENTED LAND (P) or ●
- PATENTED FOR SURFACE RIGHTS ONLY ○
- LEASES ○
- LICENSE OF OCCUPATION L.O.
- CROWN LAND SALE C.S.
- LOCATED LAND Loc.
- CANCELLED C.
- MINING RIGHTS ONLY M.R.O.
- SURFACE RIGHTS ONLY S.R.O.
- HIGHWAY & ROUTE No. — 17 —
- ROADS — — — — —
- TRAILS - - - - -
- RAILWAYS = = = = =
- POWER LINES — — — — —
- MARSH OR MUSKEG ~ ~ ~ ~ ~
- MINES ✕

used only with summer resort locations or when space is limited

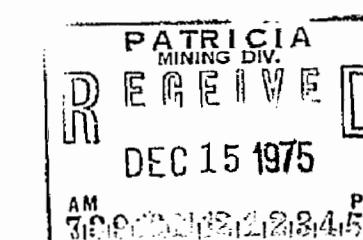
NOTES

400 Surface Rights Reservation Around the Shores of All Lakes and Rivers

Updated June 6/77



#2



6-2220

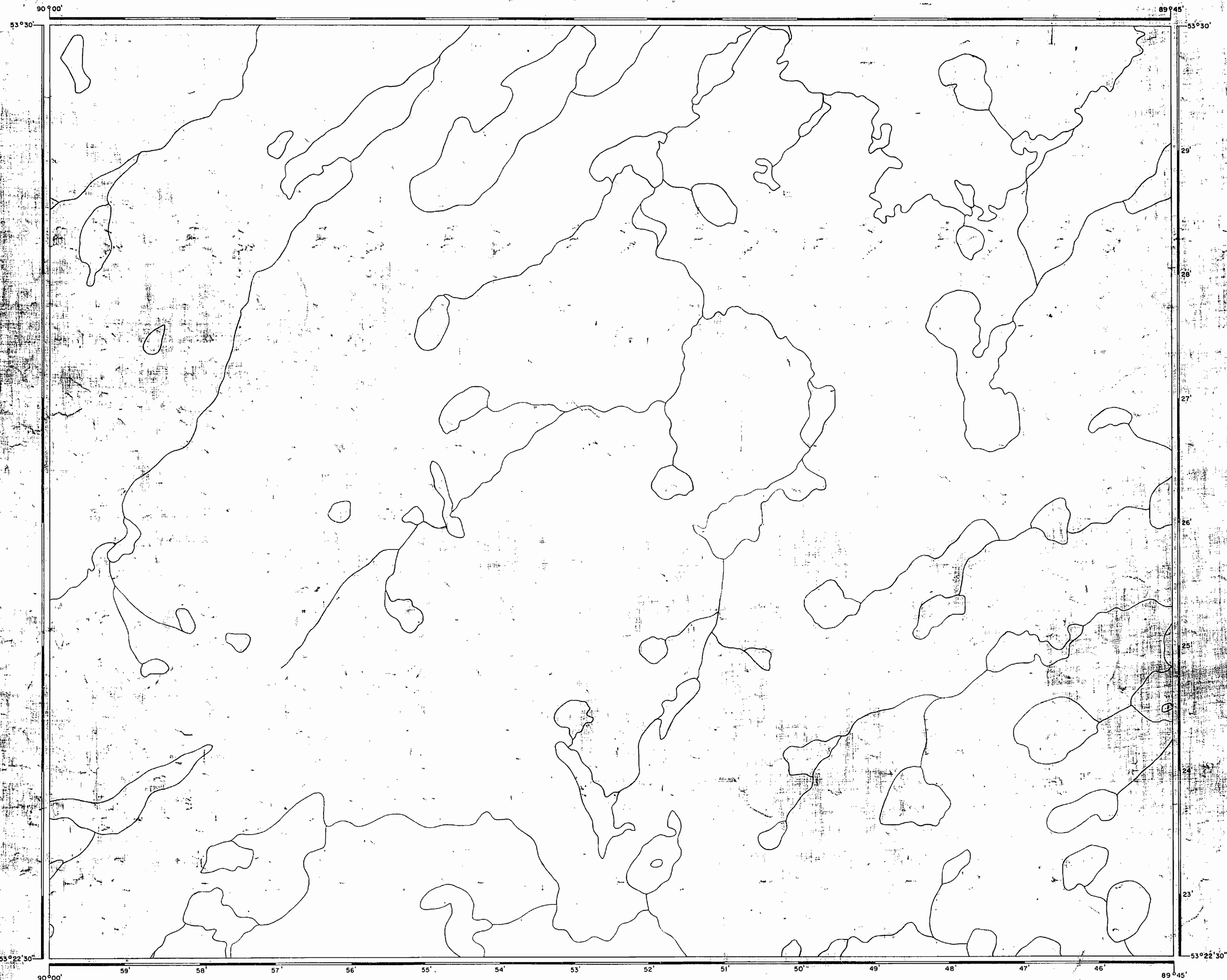
NATIONAL TOPOGRAPHIC SERIES - 53 H

PLAN NO. M.3226

MINISTRY OF NATURAL RESOURCES
SURVEYS AND MAPPING BRANCH

BLOW - UP
534 894

NEMEIGUSABINS LAKE M.2225



AREA
South of
NEMEIGUSABINS
LAKE

DISTRICT OF
KENORA
PATRICIA MINE

PATRICIA
MINING DIVISION

SCALE: 1 INCH = 40 CHAINS

LEGEND

- PATENTED LAND
 - PATENTED FOR SURFACE RIGHTS ONLY
 - LEASE
 - LICENSE OF OCCUPATION
 - CROWN LAND (SAR)
 - LOCATED LAND
 - CANCELLED
 - MINING RIGHTS ONLY
 - SURFACE RIGHTS ONLY
 - RAILWAY ROUTE No.
 - ROADS
 - TRAILS
 - RAILWAYS
 - POWER LINES
 - MARSH OR MUSKEG
 - MINES
- Used only with summer resort. Best use of space is limited.

NOTES

400 Surface Rights Reservation Along
the Rivers



G-2220

NATIONAL TOPOGRAPHIC SURVEY

PLAN NO. M.3226

ONTARIO
MINISTRY OF NATURAL RESOURCES
SURVEYS AND MAPPING BRANCH

BLOW - UP
524 894

NEMEIGUSABINS LAKE G-2143

LEGEND

| | |
|------------------------------------|--|
| HIGHWAY AND ROUTE No. | |
| OTHER ROADS | |
| TRAILS | |
| SURVEYED LINES: | |
| TOWNSHIPS, BASE LINES, ETC. | |
| LOTS, MINING CLAIMS, PARCELS, ETC. | |
| UNSURVEYED LINES: | |
| LOT LINES | |
| PARCEL BOUNDARY | |
| MINING CLAIMS ETC. | |
| RAILWAY AND RIGHT OF WAY | |
| UTILITY LINES | |
| NON-PERENNIAL STREAM | |
| FLOODING OR FLOODING RIGHTS | |
| SUBDIVISION OR COMPOSITE PLAN | |
| RESERVATIONS | |
| ORIGINAL SHORELINE | |
| MARSH OR MUSKEG | |
| MINES | |
| TRAVERSE MONUMENT | |

DISPOSITION OF CROWN LANDS

| TYPE OF DOCUMENT | SYMBOL |
|---------------------------------|--------|
| PATENT, SURFACE & MINING RIGHTS | |
| " SURFACE RIGHTS ONLY | |
| " MINING RIGHTS ONLY | |
| LEASE, SURFACE & MINING RIGHTS | |
| " SURFACE RIGHTS ONLY | |
| " MINING RIGHTS ONLY | |
| LICENCE OF OCCUPATION | |
| ORDER-IN-COUNCIL | |
| RESERVATION | |
| CANCELLED | |
| SAND & GRAVEL | |

NOTE: MINING RIGHTS IN PARCELS PATENTED PRIOR TO MAY 6, 1913, VESTED IN ORIGINAL PATENTEE BY THE PUBLIC LANDS ACT, R.S.O. 1970, CHAP. 380, SEC. 83, SUBSEC. 1.

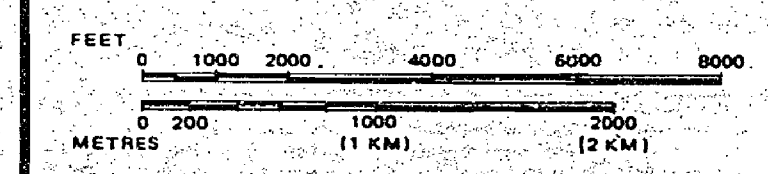
REFERENCES

AREAS WITHDRAWN FROM DISPOSITION

| | |
|-----------------------------------|---------------------------------|
| M.R.O. - MINING RIGHTS ONLY | |
| S.R.O. - SURFACE RIGHTS ONLY | |
| M.+S. - MINING AND SURFACE RIGHTS | |
| Description | Order No. Date Disposition File |

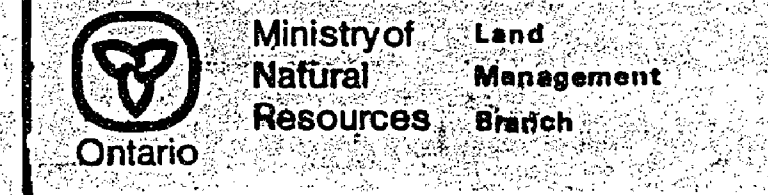
AREA IN SHIBOGAMA INTERIM PLANNING BOARD
CALL FOR DETAILS 737-2662

SCALE: 1 INCH = 40 CHAINS

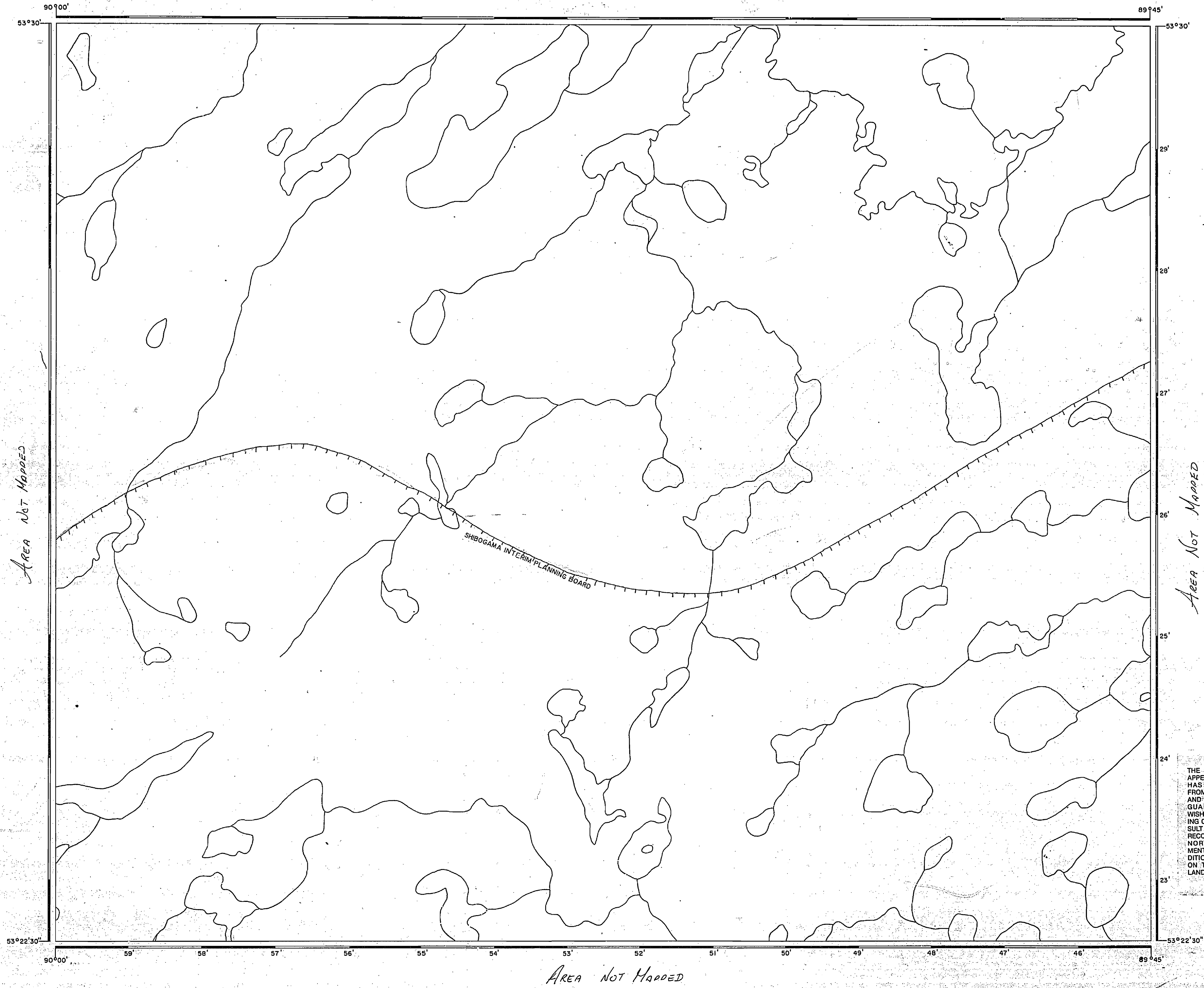


THE INFORMATION THAT APPEARS ON THIS MAP HAS BEEN COMPILED FROM VARIOUS SOURCES, AND ACCURACY IS NOT GUARANTEED. THOSE WISHING TO STAKE MINING CLAIMS SHOULD CONSULT WITH THE MINING RECORDER, MINISTRY OF NORTHERN DEVELOPMENT AND MINES, FOR ADDITIONAL INFORMATION ON THE STATUS OF THE LANDS SHOWN HEREON.

AREA SOUTH OF NEMEIGUSABINS LAKE
M.N.R. ADMINISTRATIVE DISTRICT
SIOUX LOOKOUT
MINING DIVISION
PATRICIA
LAND TITLES / REGISTRY DIVISION
KENORA (PATRICIA PORTION)



Date JANUARY, 1984 Number G-2220



AREA NOT MAPPED

AREA NOT MAPPED

AREA NOT MAPPED

BLOW - UP
534 894

NEMEIGUSABINS LAKE M.2225

AREA
 south of
**NEMEIGUSABINS
 LAKE**
 DISTRICT OF
 KENORA
 PATRICIA PORTION
 PATRICIA
 MINING DIVISION
 SCALE: 1-INCH = 40 CHAINS

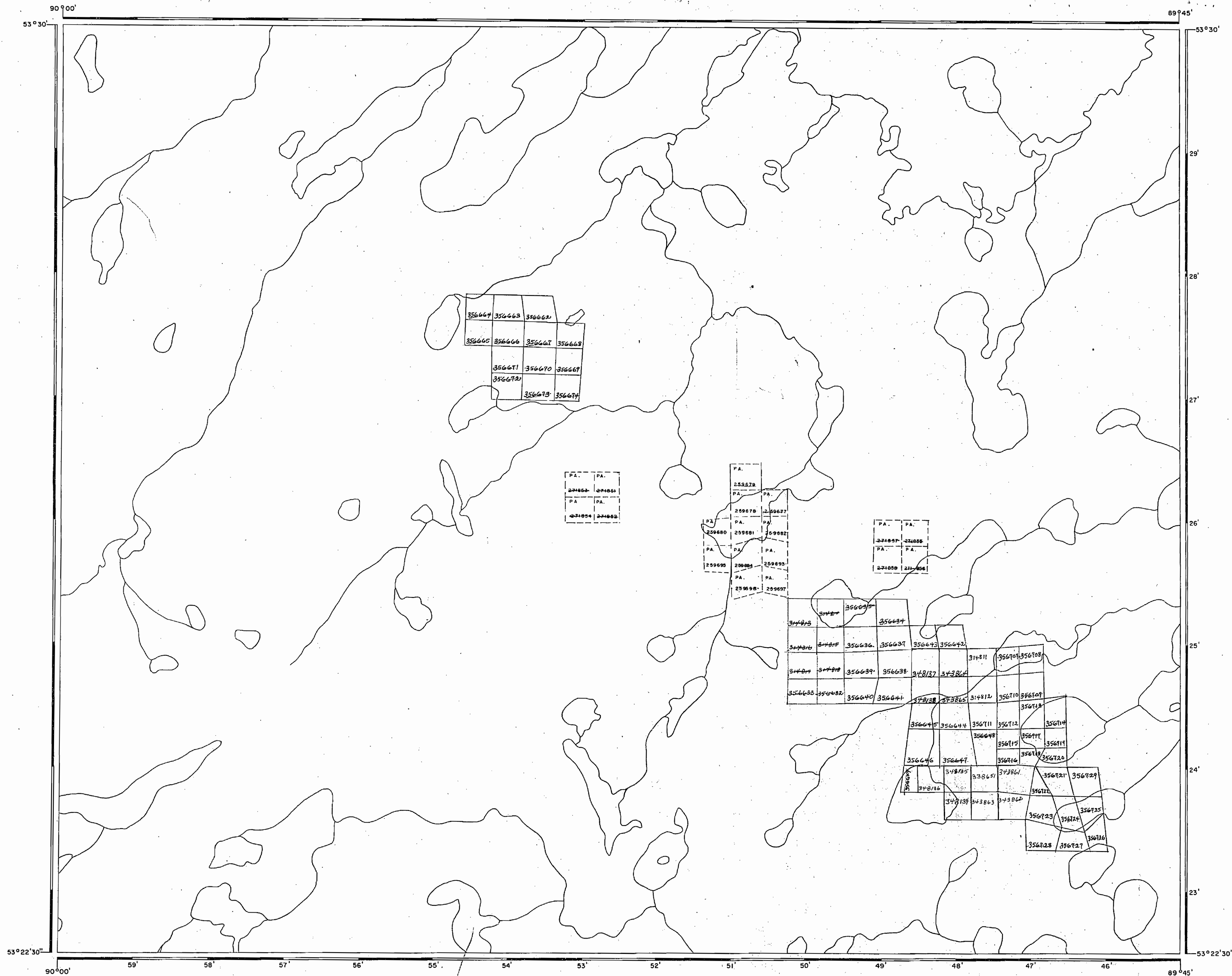
LEGEND

- PATENTED LAND PATENTED FOR SURFACE RIGHTS ONLY (P or ●)
- LEASES (○)
- LICENSE OF OCCUPATION (L.O.)
- CROWN LAND SALE (C.S.)
- LOCATED LAND (Loc.)
- CANCELLED (C.)
- MINING RIGHTS ONLY (M.R.O.)
- SURFACE RIGHTS ONLY (S.R.O.)
- HIGHWAY & ROUTE No. (17)
- ROADS (—)
- TRAILS (---)
- RAILWAYS (—+—)
- POWER LINES (—+—+—)
- MARSH OR MUSKEG (wavy lines)
- MINES (X)

*used only with summer resort locations or when space is limited

NOTES

400' Surface Rights Reservation Around the Shores of All Lakes and Rivers



G-2220

NATIONAL TOPOGRAPHIC SERIES 53 H

PLAN NO. **M.3226**

ONTARIO
 DEPARTMENT OF MINES
 AND NORTHERN AFFAIRS

BLOW - UP
 534 894