

313

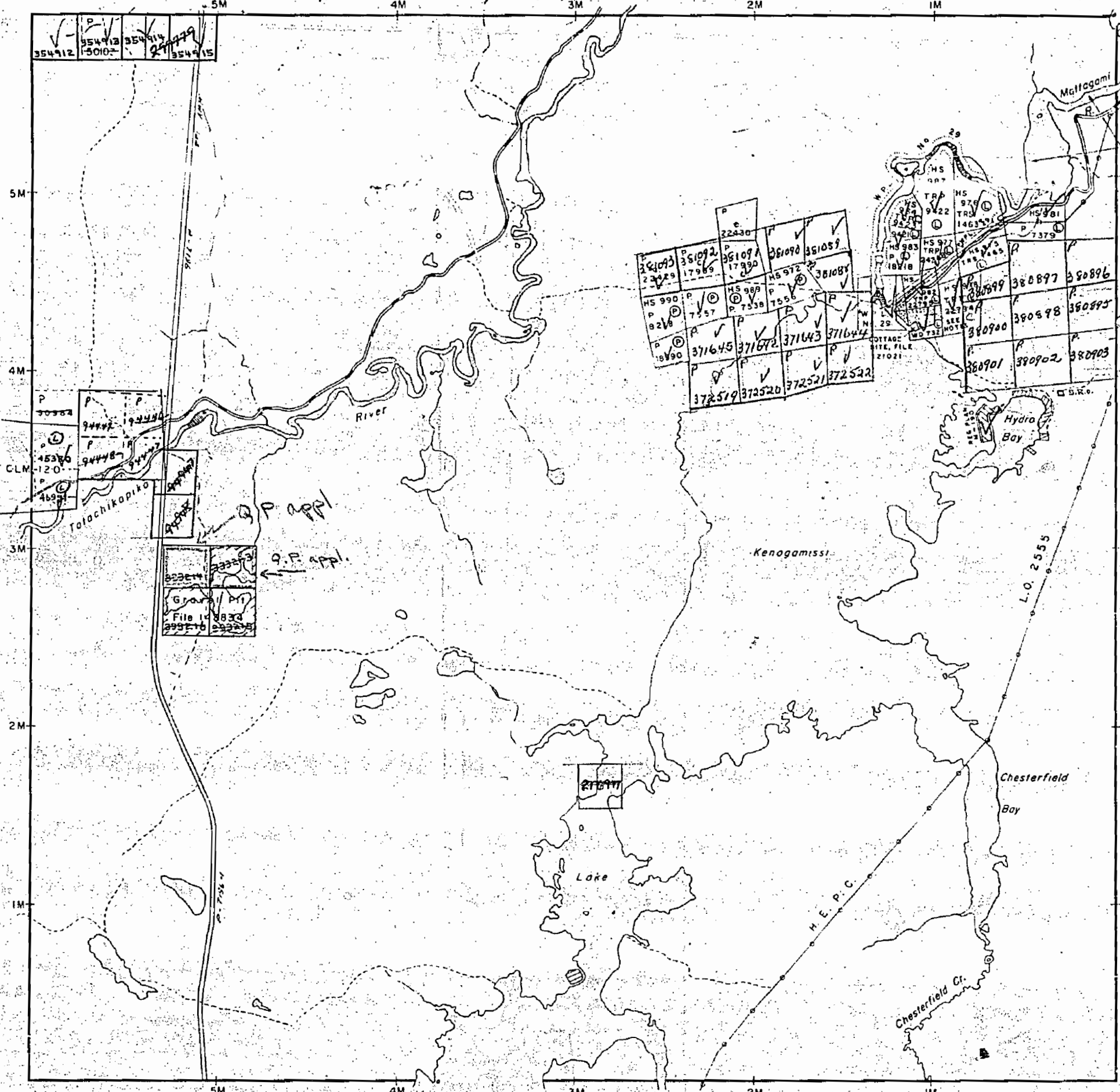
Bristol Twp. M.264

TWP LINE RESURVEYED

Denton Twp. M.273

Price Twp. M.307

McKeown Twp. M.299



THE TOWNSHIP OF  
**THORNELOE**

#162

DISTRICT OF  
~~TIMISKAMING~~  
Cochrane

PORCUPINE  
MINING DIVISION

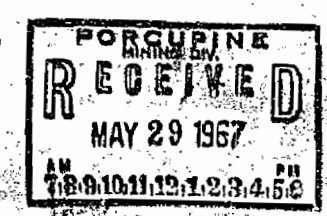
SCALE: 1-INCH = 40 CHAINS

LEGEND

PATENTED LAND	Ⓟ
CROWN LAND SALE	C.S.
LEASES	Ⓛ
LOCATED LAND	Loc
LICENSE OF OCCUPATION	L.O.
MINING RIGHTS ONLY	M.R.O.
SURFACE RIGHTS ONLY	S.R.O.
ROADS	—
IMPROVED ROADS	—
KING'S HIGHWAYS	—
RAILWAYS	—
POWER LINES	—
MARSH OR MUSKEG	—
MINES	X
CANCELLED	—

NOTES

- 400' Surface Rights reservation around all Lakes & Rivers.
- Reservation for Deputy Chief Ranger's Headquarters site shown thus File #0657
- For status of summer resorts contact Dept. of Lands & Forests
- Flooding Rights reserved on Mattagami River & Kenogamissi Lake to H.E.P.C. L.O. 7598 File #163 Vol 3
- That portion of the Twp. lying East of the Mattagami River is in the Timagami Provincial Forest Reserve



PLAN NO. **M.313**

DEPARTMENT OF MINES

— ONTARIO —

Bristol Twp. M.264

THE TOWNSHIP OF  
OF

# THORNELOE

DISTRICT OF  
COCHRANE

PORCUPINE  
MINING DIVISION

SCALE: 1-INCH = 40 CHAINS

### LEGEND

REGISTERED PLAN OF SUBDIVISION	
PATENTED LAND	
CROWN LAND SALE	C.S.
LEASES	
LOCATED LAND	Loc.
LICENSE OF OCCUPATION	L.O.
MINING RIGHTS ONLY	M.R.O.
SURFACE RIGHTS ONLY	S.R.O.
ROADS	
IMPROVED ROADS	
KING'S HIGHWAYS	
RAILWAYS	
POWER LINES	
MARSH OR MUSKIEG	
MINES	
CANCELLED	C.
PATENTED S.R.O.	
L.W.P.	

### NOTES

400' Surface Rights reservation along the shores of all lakes and rivers.

Reservation for Deputy Chief Ranger's Headquarters site shown thus File 110657

Flooding rights on Mattagami River & Kenogamissi Lake are reserved to Ont. Hydro - L.O. 7598 File 1163 vol.3

Areas withdrawn from staking under Section 43 of the Mining Act (R.S.O. 1970.)

Order N <sup>o</sup>	File	Date	Disposition
①	164584	17/5/72	S.R.O.

PLANNED REFORESTATION  
May 2/83

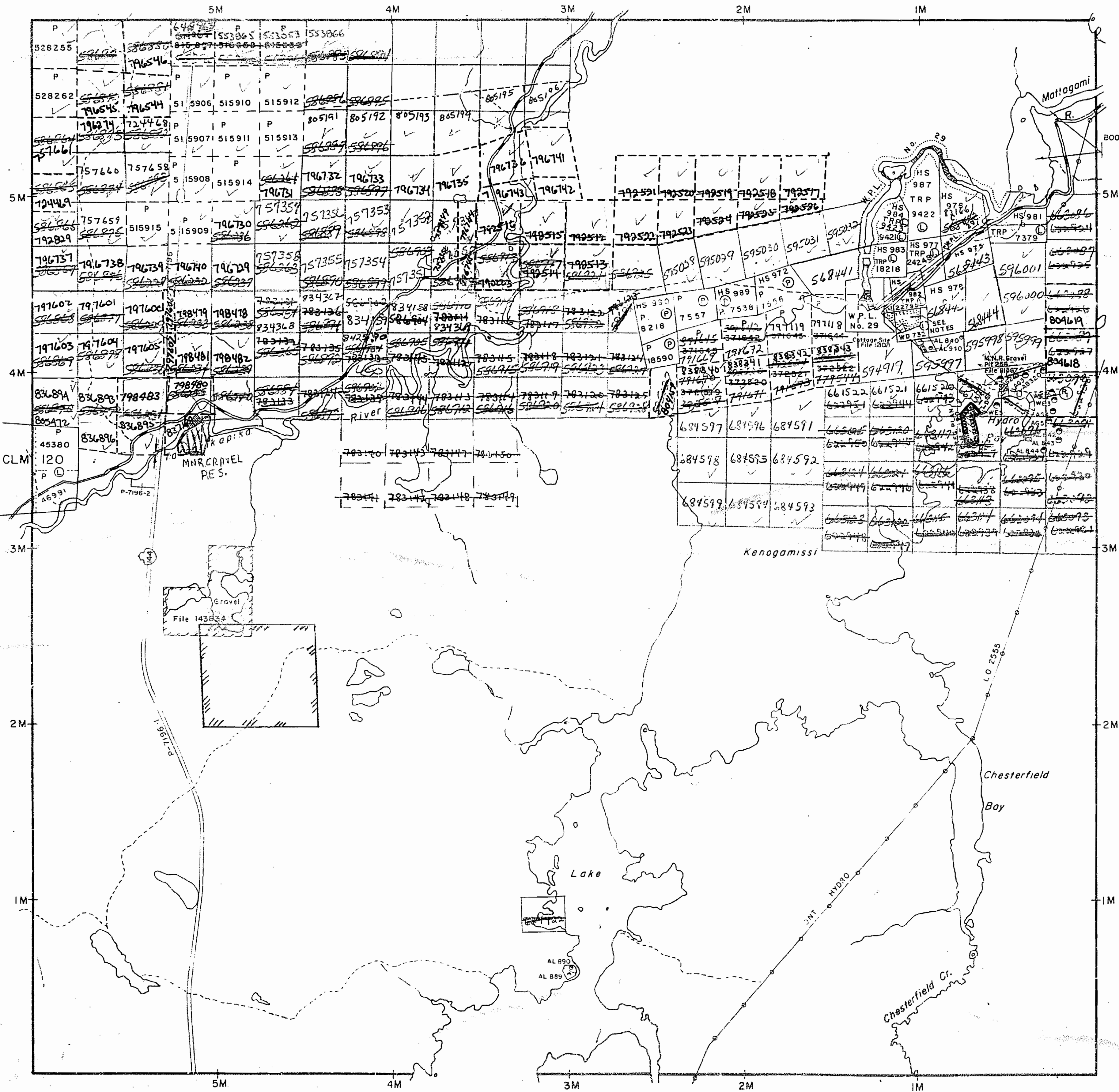
Received Oct. 1/79  
This township lies within the Municipality of the CITY of TIMMINS.

PLAN NO. **M.313**

ONTARIO  
MINISTRY OF NATURAL RESOURCES  
SURVEYS AND MAPPING BRANCH

Denton Twp. M.273

Price Twp. M.307



Mc Keown Twp. M.299

**REFERENCES**

**AREAS WITHDRAWN FROM DISPOSITION**

- M.R.O. — MINING RIGHTS ONLY
- S.R.O. — SURFACE RIGHTS ONLY
- M.+S. — MINING AND SURFACE RIGHTS

Description	Order No.	Date	Disposition	File
(R) SEC. 43/70		17/5/72	S.R.O.	164584
(F1) FILED ONLY	Nov. 15/85,	832526, 832701		
(F2)				

**SAND AND GRAVEL**

(G) GRAVEL	FILE 143834
(G2) M.N.R. GRAVEL RESERVE	
(G3) M.N.R. GRAVEL PIT 258	FILE 111467

**NOTES**

Reservation for Deputy Chief Ranger's Headquarters site shown thus File: 110657

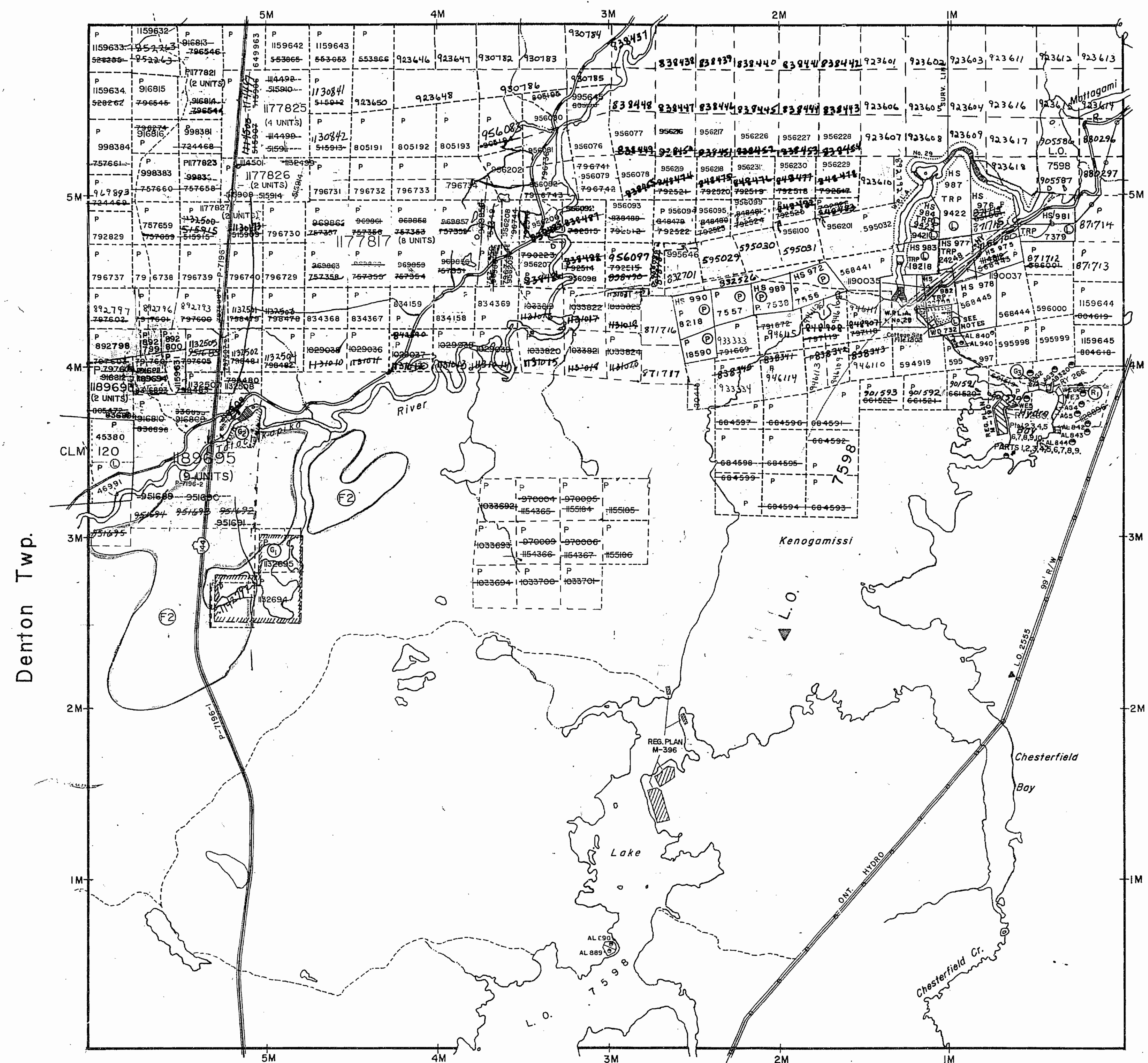
Flooding Rights on Kenogamissi Lk. & Mattagami R. are reserved to Ont. Hydro — L.O. 7598. File: 1163 vol.3

This township lies within the Municipality of the CITY OF TIMMINS.

(F2) THIS TWP. SUBJECT TO FOREST ACTIVITIES IN 1992/93. FURTHER INFORMATION AVAILABLE ON FILE.

THE INFORMATION THAT APPEARS ON THIS MAP HAS BEEN COMPILED FROM VARIOUS SOURCES, AND ACCURACY IS NOT GUARANTEED. THOSE WISHING TO STAKE MINING CLAIMS SHOULD CONSULT WITH THE MINING RECORDER, MINISTRY OF NORTHERN DEVELOPMENT AND MINES, FOR ADDITIONAL INFORMATION ON THE STATUS OF THE LANDS SHOWN HEREON.

**Bristol Twp.**



**McKeown Twp.**

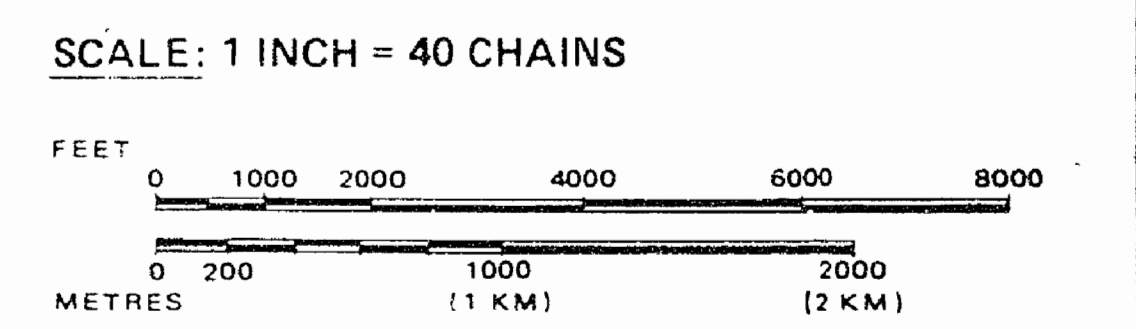
**LEGEND**

- HIGHWAY AND ROUTE No.
- OTHER ROADS
- TRAILS
- SURVEYED LINES:
  - TOWNSHIPS, BASE LINES, ETC.
  - LOTS, MINING CLAIMS, PARCELS, ETC.
- UNSURVEYED LINES:
  - LOT LINES
  - PARCEL BOUNDARY
  - MINING CLAIMS ETC.
- RAILWAY AND RIGHT OF WAY
- UTILITY LINES
- NON-PERENNIAL STREAM
- FLOODING OR FLOODING RIGHTS
- SUBDIVISION OR COMPOSITE PLAN RESERVATIONS
- ORIGINAL SHORELINE
- MARSH OR MUSKOG
- MINES
- TRAVERSE MONUMENT

**DISPOSITION OF CROWN LANDS**

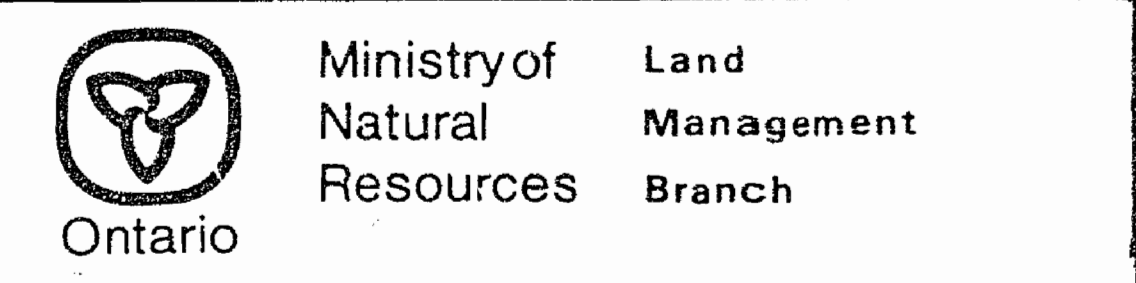
TYPE OF DOCUMENT	SYMBOL
PATENT, SURFACE & MINING RIGHTS	
" SURFACE RIGHTS ONLY	
" MINING RIGHTS ONLY	
LEASE, SURFACE & MINING RIGHTS	
" SURFACE RIGHTS ONLY	
" MINING RIGHTS ONLY	
LICENCE OF OCCUPATION	
ORDER-IN-COUNCIL	
RESERVATION	
CANCELLED	
SAND & GRAVEL	

NOTE: MINING RIGHTS IN PARCELS PATENTED PRIOR TO MAY 6, 1913, VESTED IN ORIGINAL PATENTEE BY THE PUBLIC LANDS ACT, R.S.O. 1970, CHAP. 380, SEC. 63, SUBSEC. 1.



REPLACED JULY 3, 1992 BY D.C.

TOWNSHIP  
**THORNELOE**  
 M.N.R. ADMINISTRATIVE DISTRICT  
 TIMMINS  
 MINING DIVISION  
 PORCUPINE  
 LAND TITLES / REGISTRY DIVISION  
 COCHRANE



Date MARCH 1985  
 April 4/85 ✓ D.M. e.j.  
 Number  
**G-3229**

**REFERENCES**

**AREAS WITHDRAWN FROM DISPOSITION**

- M.R.O. - MINING RIGHTS ONLY
- S.R.O. - SURFACE RIGHTS ONLY
- M.+S. - MINING AND SURFACE RIGHTS

Description	Order No.	Date	Disposition	File
SEC. 43/70		17/5/72	S.R.O.	164584

THE INFORMATION THAT APPEARS ON THIS MAP HAS BEEN COMPILED FROM VARIOUS SOURCES, AND ACCURACY IS NOT GUARANTEED. THOSE WISHING TO STAKE MINING CLAIMS SHOULD CONSULT WITH THE MINING RECORDER, MINISTRY OF NORTHERN DEVELOPMENT AND MINES, FOR ADDITIONAL INFORMATION ON THE STATUS OF THE LANDS SHOWN HEREON.

**SAND AND GRAVEL**

①	GRAVEL	FILE 143834
②	M.N.R. GRAVEL RESERVE	
③	M.N.R. GRAVEL PIT 258	FILE 11467

- ④ THIS TWP. SUBJECT TO FOREST ACTIVITIES IN 1994-795. FURTHER INFO AVAILABLE ON FILE.
- ⑤ THIS TWP SUBJECT TO FOREST ACTIVITY IN 1995-96. FURTHER INFORMATION AVAILABLE ON FILE.

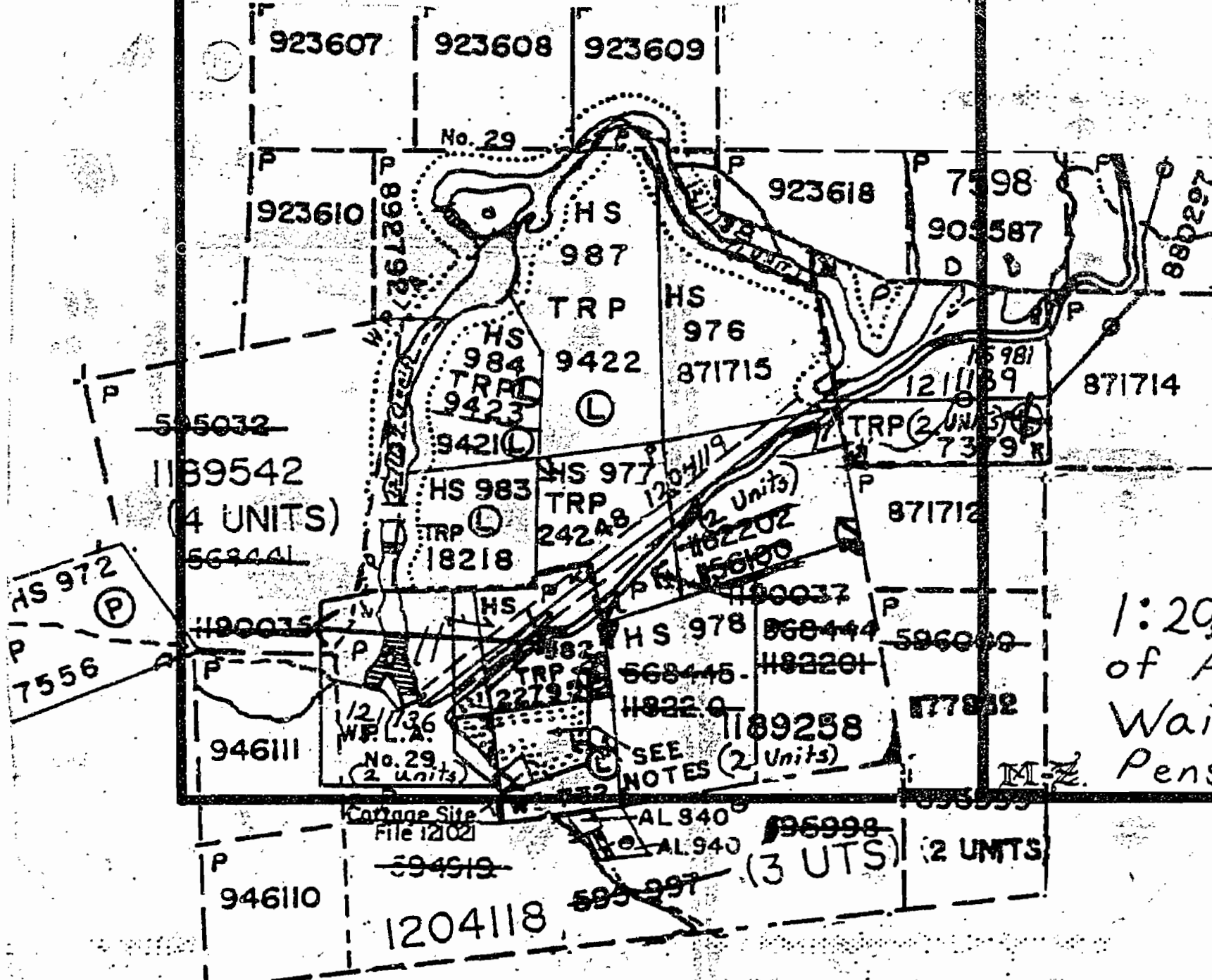
**NOTES**

Reservation for Deputy Chief Ranger's Headquarters site shown thus File: 110657

Flooding Rights on Kenogamissi Lk. & Mattagami R. are reserved to Ont. Hydro - L.O. 7598. File: 1163 vol. 3

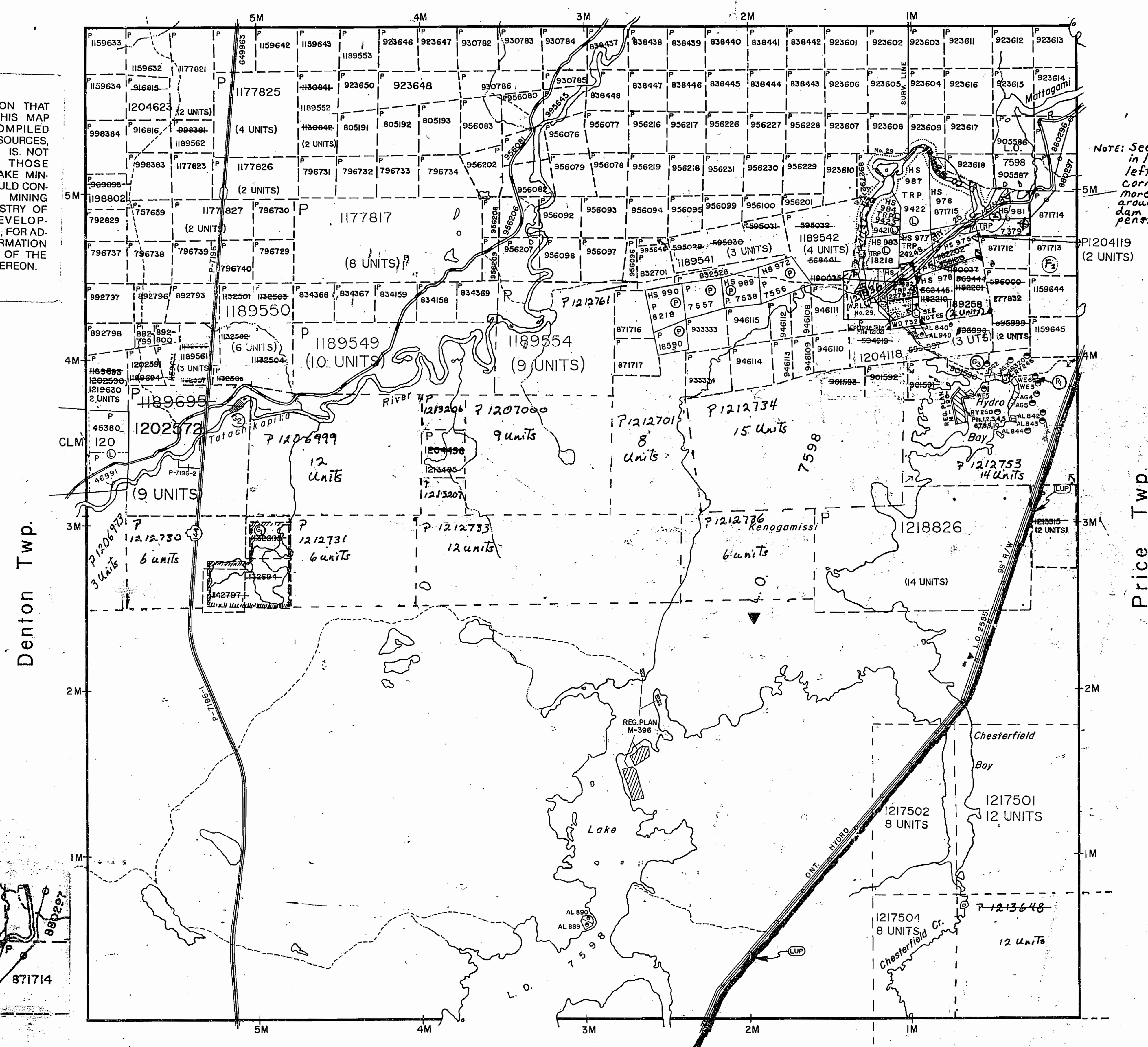
THIS TOWNSHIP LIES WITHIN THE MUNICIPALITY OF THE CITY OF TIMMINS.

LUP APPLICATION PENDING UNDER PUBLIC LANDS ACT NOTICE RECEIVED 93-MAR-30 (SNOWMOBILE TRAIL)



1:29,000 Plot of Area Around Waiwaitin Falls (Dam) and Penstock.

**Bristol Twp.**



Note: See insert in lower left-hand corner for more detail around the dam and penstock area.

Denton Twp.

Price Twp.

**Mc Keown Twp.**

**LEGEND**

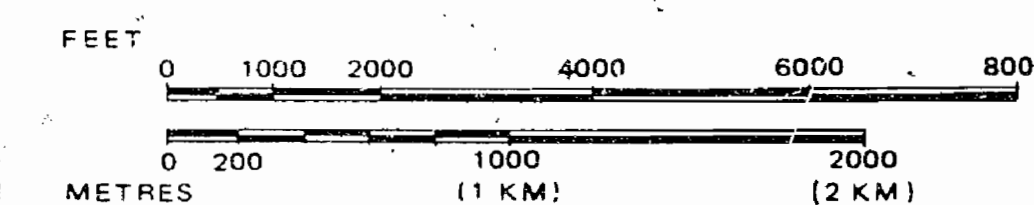
- HIGHWAY AND ROUTE No.
- OTHER ROADS
- TRAILS
- SURVEYED LINES: TOWNSHIPS, BASE LINES, ETC.
- UNSURVEYED LINES: LOT LINES, PARCEL BOUNDARY, MINING CLAIMS ETC.
- RAILWAY AND RIGHT OF WAY
- UTILITY LINES
- NON-PERENNIAL STREAM
- FLOODING OR FLOODING RIGHTS
- SUBDIVISION OR COMPOSITE PLAN
- RESERVATIONS
- ORIGINAL SHORELINE
- MARSH OR MUSKEG
- MINES
- TRAVERSE MONUMENT

**DISPOSITION OF CROWN LANDS**

TYPE OF DOCUMENT	SYMBOL
PATENT, SURFACE & MINING RIGHTS	⊙ or ⊚
" SURFACE RIGHTS ONLY	⊙
" MINING RIGHTS ONLY	⊚
LEASE, SURFACE & MINING RIGHTS	⊙ or ⊚
" SURFACE RIGHTS ONLY	⊙
" MINING RIGHTS ONLY	⊚
LICENCE OF OCCUPATION	L.O. or ⊙
ORDER-IN-COUNCIL	OC
RESERVATION	⊙
CANCELLED	⊙
SAND & GRAVEL	⊙

NOTE: MINING RIGHTS IN PARCELS PATENTED PRIOR TO MAY 6, 1913, VESTED IN ORIGINAL PATENTEE BY THE PUBLIC LANDS ACT, R.S.O. 1970, CHAP. 380, SEC. 63, SUBSEC. 1.

SCALE: 1 INCH = 40 CHAINS



TOWNSHIP

**THORNELOE**

M.N.R. ADMINISTRATIVE DISTRICT  
 TIMMINS  
 MINING DIVISION  
 PORCUPINE  
 COCHRANE



Date MARCH 1985  
 Number G-3229  
 ACTIVATED JULY 3, 1992 BY D.C.  
 CHECKED BY G.R.W.

**REFERENCES**

**AREAS WITHDRAWN FROM DISPOSITION**

- M.R.O. - MINING RIGHTS ONLY
- S.R.O. - SURFACE RIGHTS ONLY
- M+S. MINING AND SURFACE RIGHTS

Description	Order No.	Date	Disposition	File
(M) SFC. 43/70		7/5/72	S.R.U.	164504

(R) Sec. 35 W-LL-C 1584 07/05/99 M+S

THE INFORMATION THAT APPEARS ON THIS MAP HAS BEEN COMPILED FROM VARIOUS SOURCES, AND ACCURACY IS NOT GUARANTEED

JAN 04 2000

THOSE WISHING TO STAKE MINING CLAIMS SHOULD CONSULT WITH THE MINING RECORDER, MINISTRY OF NORTHERN DEVELOPMENT AND MINES, FOR ADDITIONAL INFORMATION ON THE STATUS OF THE LANDS SHOWN HEREON.

THE INFORMATION THAT APPEARS ON THIS MAP HAS BEEN COMPILED FROM VARIOUS SOURCES, AND ACCURACY IS NOT GUARANTEED. THOSE WISHING TO STAKE MINING CLAIMS SHOULD CONSULT WITH THE MINING RECORDER, MINISTRY OF NORTHERN DEVELOPMENT AND MINES, FOR ADDITIONAL INFORMATION ON THE STATUS OF THE LANDS SHOWN HEREON.

**SAND AND GRAVEL**

- (1) GRAVEL FILE 143834
- (2) MNR GRAVEL RESERVE
- (3) MNR GRAVEL PIT 25# FILE #467

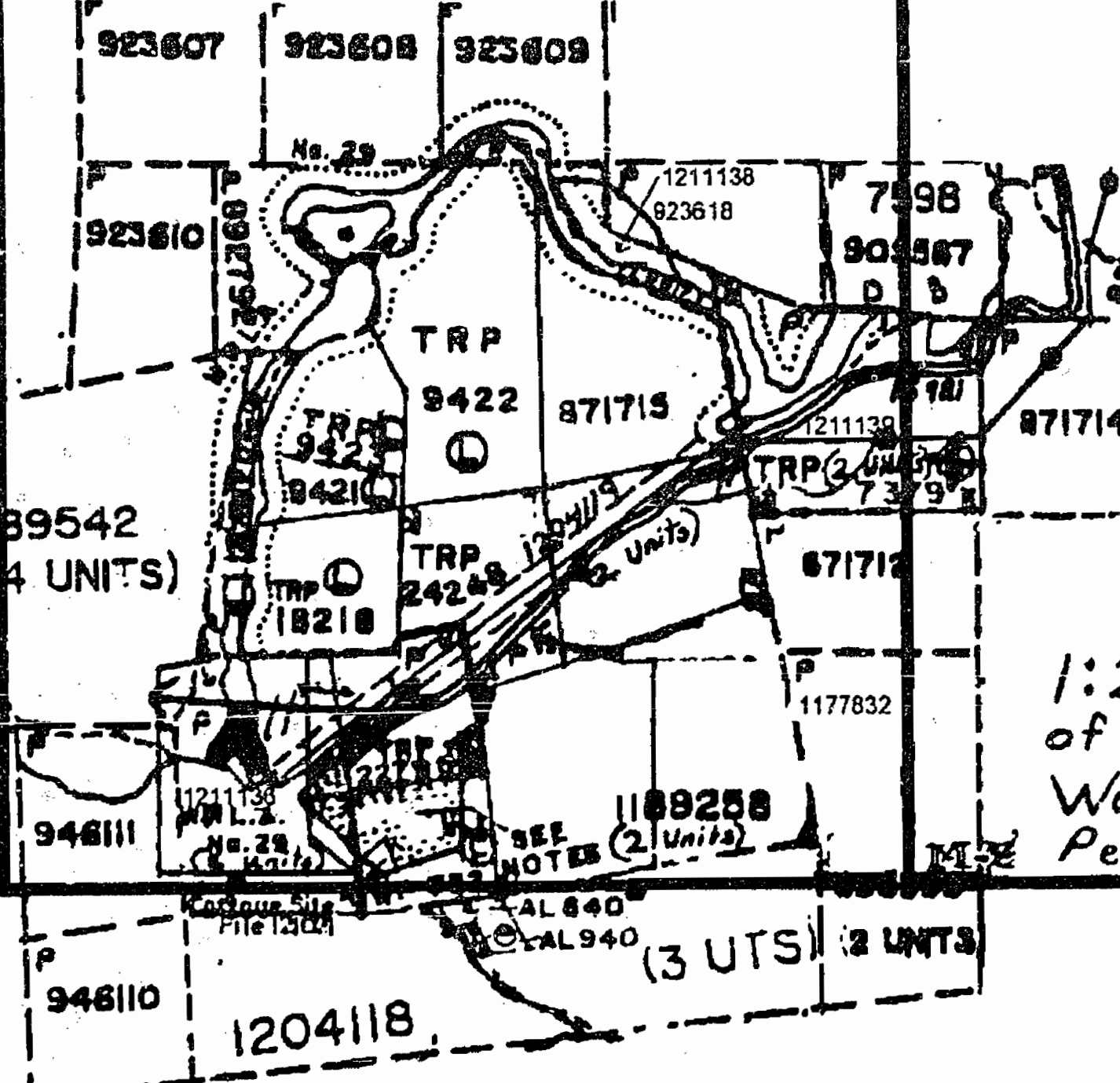
**NOTES**

Reservation for Deputy Chief Ranger's Headquarters site shown thus *[Symbol]* File: 110657

Flooding Rights on Kenogamissi Lk. & Mattagami R. are reserved to Ont. Hydro - L.O. 7598. File: 1163 vol. 3

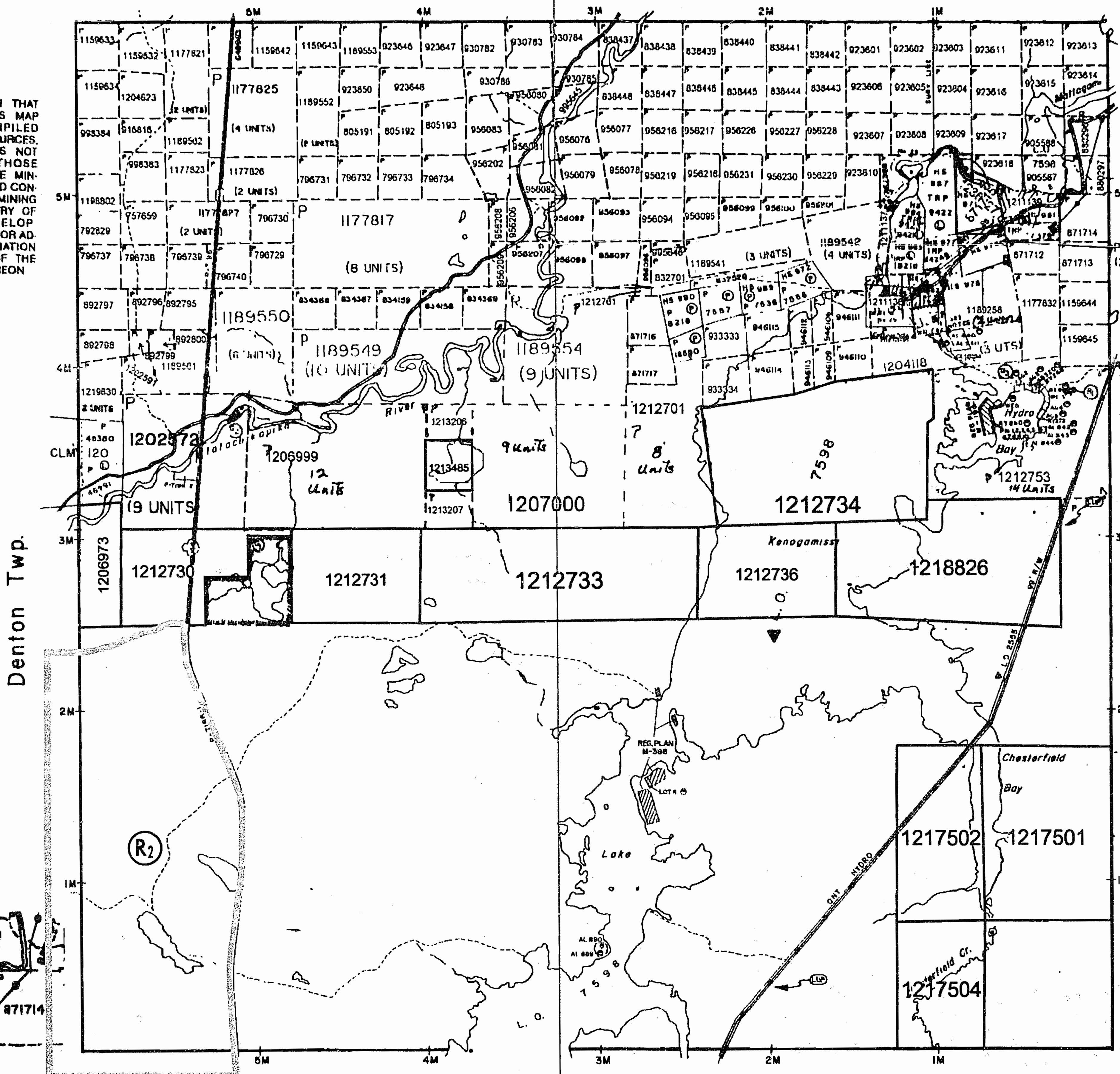
THIS TOWNSHIP LIES WITHIN THE MUNICIPALITY OF THE CITY OF THORNELOE

(LUP) APPLICATION PENDING UNDER PUBLIC LANDS ACT NOTICE RECEIVED 03-MAR-90 (MOVABLE TRAIL)



1:29000 Plot of Area Around Waiwaitin Falls Dam and Penstock.

**Bristol Twp.**



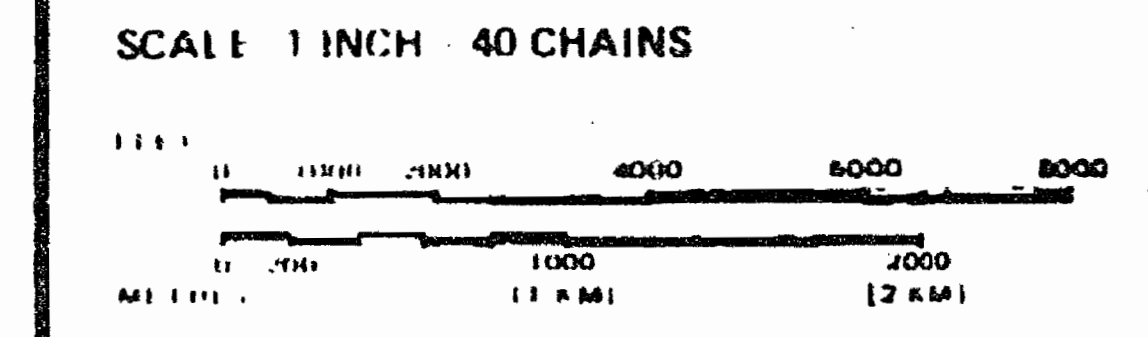
**McKeown Twp.**

**LEGEND**

- HIGHWAY AND ROUTE No. *[Symbol]*
- OTHER ROADS *[Symbol]*
- TRAILS *[Symbol]*
- SURVEYED LINES *[Symbol]*
- TOWNSHIPS, BASE LINES, ETC. *[Symbol]*
- LOTS, MINING CLAIMS, PARCELS, ETC. *[Symbol]*
- UNSURVEYED LINES *[Symbol]*
- LOT LINES *[Symbol]*
- PARCEL BOUNDARY *[Symbol]*
- MINING CLAIMS ETC. *[Symbol]*
- RAILWAY AND RIGHT OF WAY *[Symbol]*
- UTILITY LINES *[Symbol]*
- NON-PERENNIAL STREAM *[Symbol]*
- FLOODING OR FLOODING RIGHTS *[Symbol]*
- SUBDIVISION OR COMPOSITE PLAN *[Symbol]*
- RESERVATIONS *[Symbol]*
- ORIGINAL SHORELINE *[Symbol]*
- MARSH OR MUSKEG *[Symbol]*
- MINES *[Symbol]*
- TRAVERSE MONUMENT *[Symbol]*

**DISPOSITION OF CROWN LANDS**

TYPE OF DOCUMENT	SYMBOL
PATENT SURFACE & MINING RIGHTS	<i>[Symbol]</i>
" SURFACE RIGHTS ONLY	<i>[Symbol]</i>
" MINING RIGHTS ONLY	<i>[Symbol]</i>
LEASE, SURFACE & MINING RIGHTS	<i>[Symbol]</i>
" SURFACE RIGHTS ONLY	<i>[Symbol]</i>
" MINING RIGHTS ONLY	<i>[Symbol]</i>
LICENCE OF OCCUPATION	<i>[Symbol]</i>
ORDER-IN-COUNCIL	<i>[Symbol]</i>
RESERVATION	<i>[Symbol]</i>
CANCELLED	<i>[Symbol]</i>
SAND & GRAVEL	<i>[Symbol]</i>
LAND USE PERMITS FOR COMMERCIAL TOURISM, OUTPOST CAMPS	<i>[Symbol]</i>



TOWNSHIP  
**THORNELOE**  
M.N.R. ADMINISTRATIVE DISTRICT  
TIMMINS  
MINING DIVISION  
PORCUPINE  
LAND TITLES / REGISTRY DIVISION  
COCHRANE

Ministry of Natural Resources  
Land Management Branch  
Ontario

Date MARCH 1985  
Number **G-3229**  
ACTIVATED JULY 3, 1992 BY DL  
CHECKED BY GRW

313

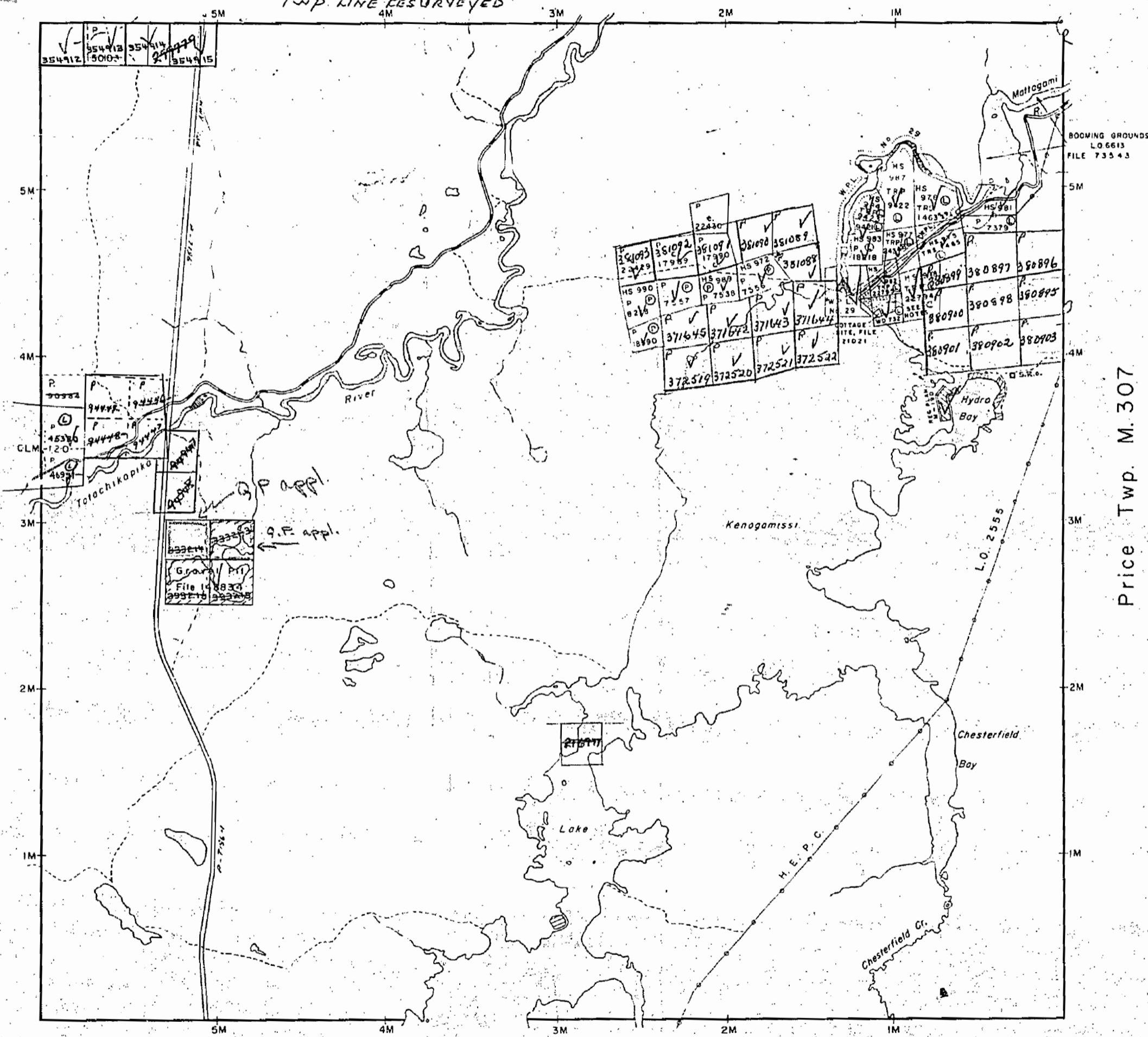
Bristol Twp. M.264

TWP. LINE RESURVEYED

Denton Twp. M.273

Price Twp. M.307

McKeown Twp. M.299



THE TOWNSHIP OF  
 THORNELOE

DISTRICT OF  
 TIMISKAMING  
 Cochrane

PORCUPINE  
 MINING DIVISION

SCALE: 1-INCH 40 CHAINS

LEGEND

PATENTED LAND	Ⓟ
CROWN LAND SALE	C.S.
LEASES	Ⓞ
LOCATED LAND	L.C.
LICENSE OF OCCUPATION	L.O.
MINING RIGHTS ONLY	M.R.O.
SURFACE RIGHTS ONLY	S.R.O.
ROADS	—
IMPROVED ROADS	—
KING'S HIGHWAYS	—
RAILWAYS	—
POWER LINES	—
MARSH OR MUSKEG	—
MINES	—
CANCELLED	—

NOTES

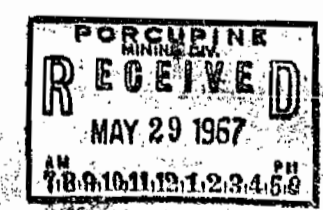
400' Surface Rights reservation around all Lakes & Rivers.

Reservation for Deputy Chief Ranger's Headquarters site shown thus File 110657.

For status of summer resorts contact Dept. of Lands & Forests .

Flooding Rights reserved on Mattagami River & Kenogamissi Lake to H.E.P.C. L.O. 7598 File 1163 Vol 3.

That portion of the Twp. lying East of the Mattagami River is in the Timagami Provincial Forest Reserve.



PLAN NO. M.313

DEPARTMENT OF MINES  
 — ONTARIO —

#162

**REFERENCES**

**AREAS WITHDRAWN FROM DISPOSITION**

- M.R.O. - MINING RIGHTS ONLY
- S.R.O. - SURFACE RIGHTS ONLY
- M.+S. - MINING AND SURFACE RIGHTS

Description	Order No.	Date	Disposition	File
SEC. 43/70		17/5/72	S.R.O.	164584

THE INFORMATION THAT APPEARS ON THIS MAP HAS BEEN COMPILED FROM VARIOUS SOURCES, AND ACCURACY IS NOT GUARANTEED. THOSE WISHING TO STAKE MINING CLAIMS SHOULD CONSULT WITH THE MINING RECORDER, MINISTRY OF NORTHERN DEVELOPMENT AND MINES, FOR ADDITIONAL INFORMATION ON THE STATUS OF THE LANDS SHOWN HEREON.

**SAND AND GRAVEL**

61	GRAVEL	FILE 143834
62	M.N.R. GRAVEL RESERVE	
63	M.N.R. GRAVEL PIT 258	FILE 11467

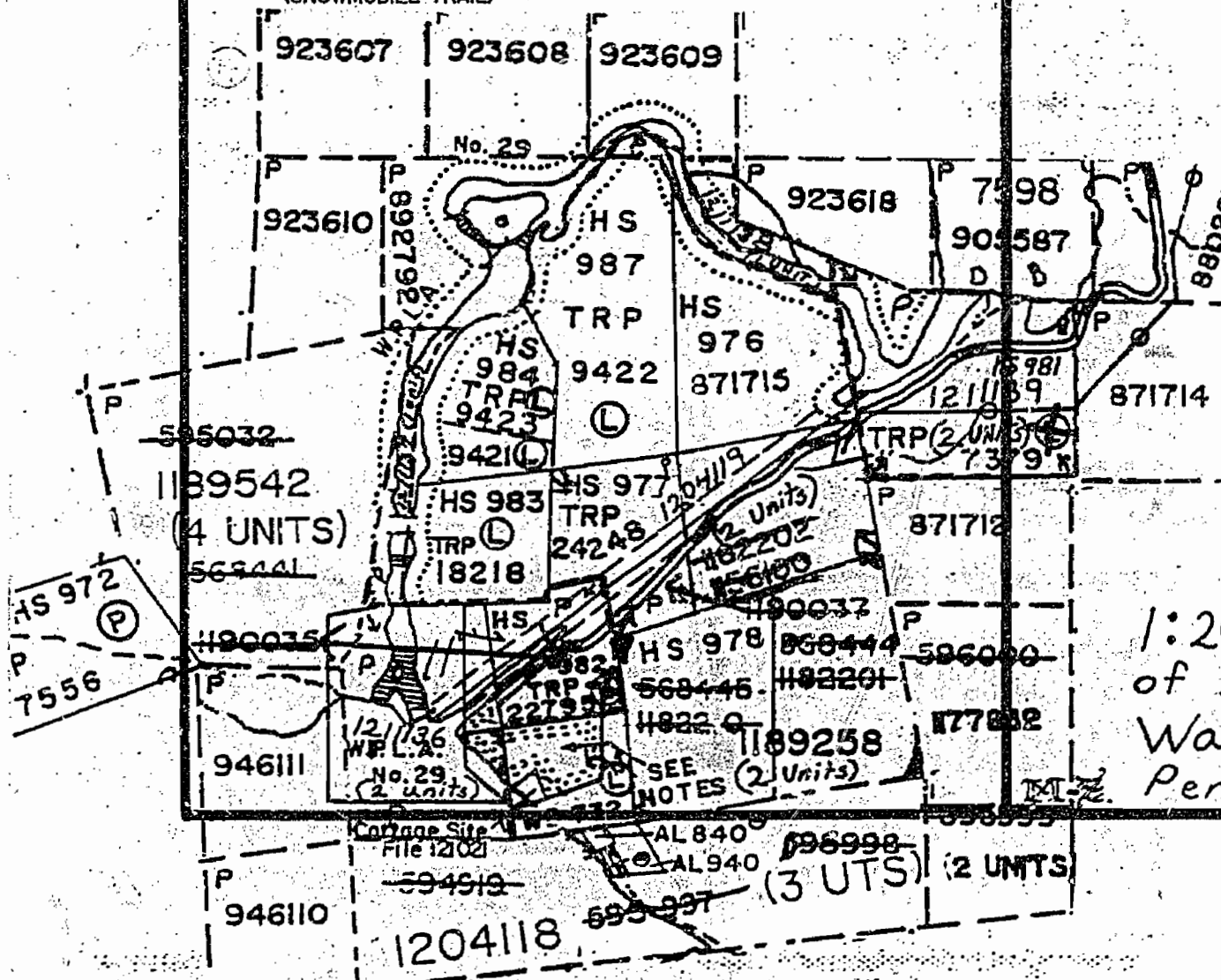
**NOTES**

Reservation for Deputy Chief Ranger's Headquarters site shown thus File: 110657

Flooding Rights on Kenogamissi Lk. & Mattagami R. are reserved to Ont. Hydro - L.O. 7598. File: 1163 vol. 3

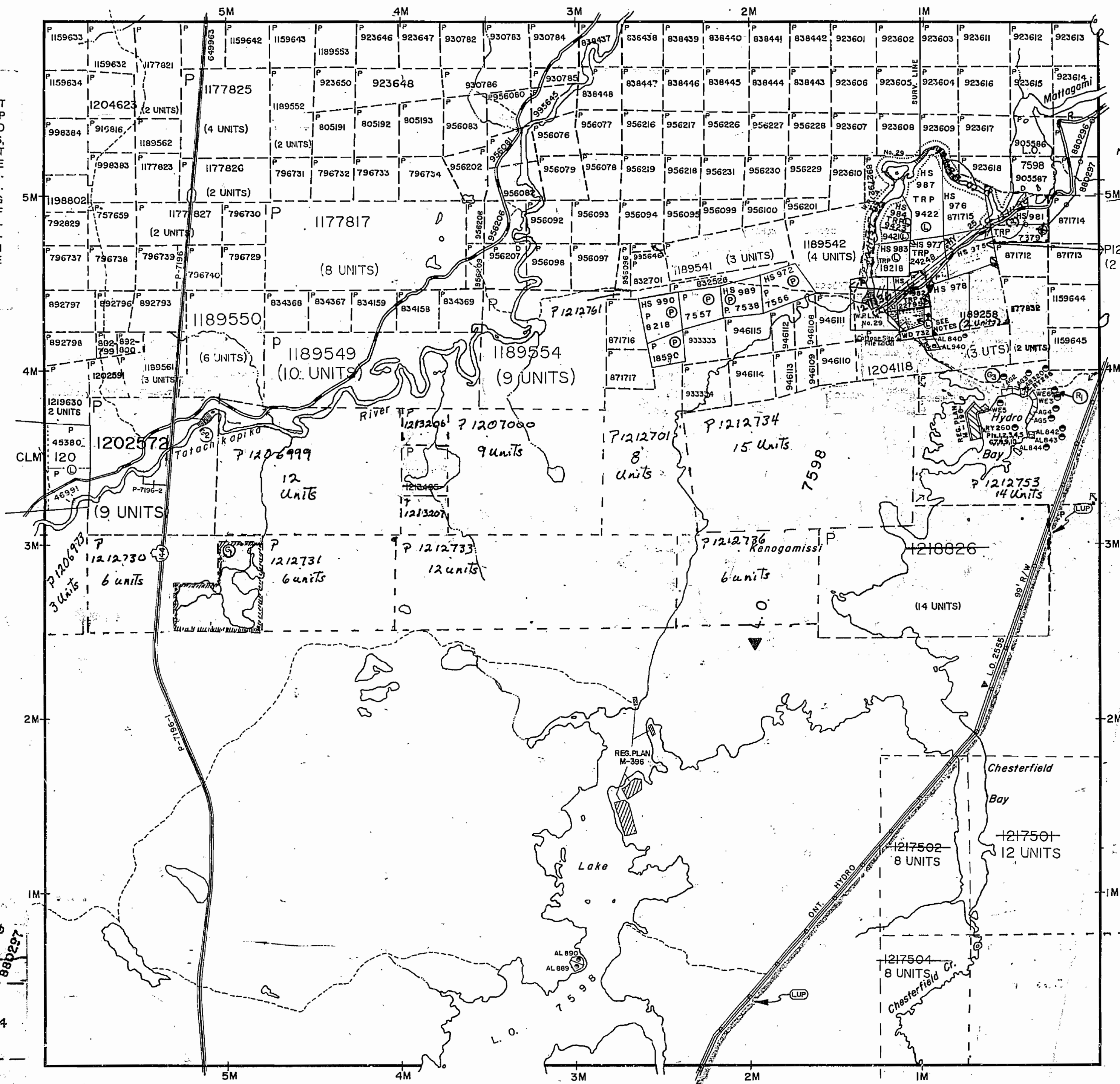
THIS TOWNSHIP LIES WITHIN THE MUNICIPALITY OF THE CITY OF TIMMINS.

APPLICATION PENDING UNDER PUBLIC LANDS ACT NOTICE RECEIVED 93-MAR-30 (SNOWMOBILE TRAIL)



1:29,000 Plot of Area Around Waiwaitin Falls (Dam) and Penstock.

**Bristol Twp.**



**LEGEND**

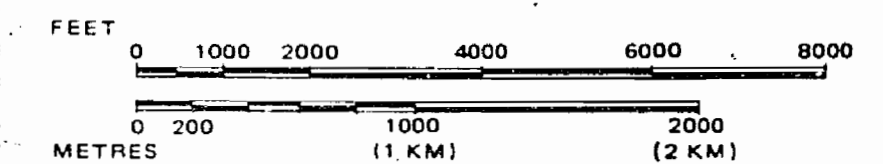
- HIGHWAY AND ROUTE No.
- OTHER ROADS
- TRAILS
- SURVEYED LINES: TOWNSHIPS, BASE LINES, ETC.
- LOTS, MINING CLAIMS, PARCELS, ETC.
- UNSURVEYED LINES: LOT LINES
- PARCEL BOUNDARY MINING CLAIMS ETC.
- RAILWAY AND RIGHT OF WAY
- UTILITY LINES
- NON-PERENNIAL STREAM
- FLOODING OR FLOODING RIGHTS
- SUBDIVISION OR COMPOSITE PLAN
- RESERVATIONS
- ORIGINAL SHORELINE
- MARSH OR MUSKEG
- MINES
- TRAVERSE MONUMENT

**DISPOSITION OF CROWN LANDS**

TYPE OF DOCUMENT	SYMBOL
PATENT, SURFACE & MINING RIGHTS	
" SURFACE RIGHTS ONLY	
" MINING RIGHTS ONLY	
LEASE, SURFACE & MINING RIGHTS	
" SURFACE RIGHTS ONLY	
" MINING RIGHTS ONLY	
LICENCE OF OCCUPATION	
ORDER-IN-COUNCIL	
RESERVATION	
CANCELLED	
SAND & GRAVEL	

NOTE: MINING RIGHTS IN PARCELS PATENTED PRIOR TO MAY 6, 1913, VESTED IN ORIGINAL PATENTEE BY THE PUBLIC LANDS ACT, R.S.O. 1970, CHAP. 380, SEC. 63, SUBSEC. 1.

SCALE: 1 INCH = 40 CHAINS



**TOWNSHIP**

**THORNELOE**

M.N.R. ADMINISTRATIVE DISTRICT

TIMMINS

MINING DIVISION

PORCUPINE

LAND TITLES / REGISTRY DIVISION

COCHRANE



Ministry of Natural Resources  
Land Management Branch

Date MARCH 1985

Number

ACTIVATED JULY 3, 1992 BY D.C.

**G-3229**

CHECKED BY G.R.W.