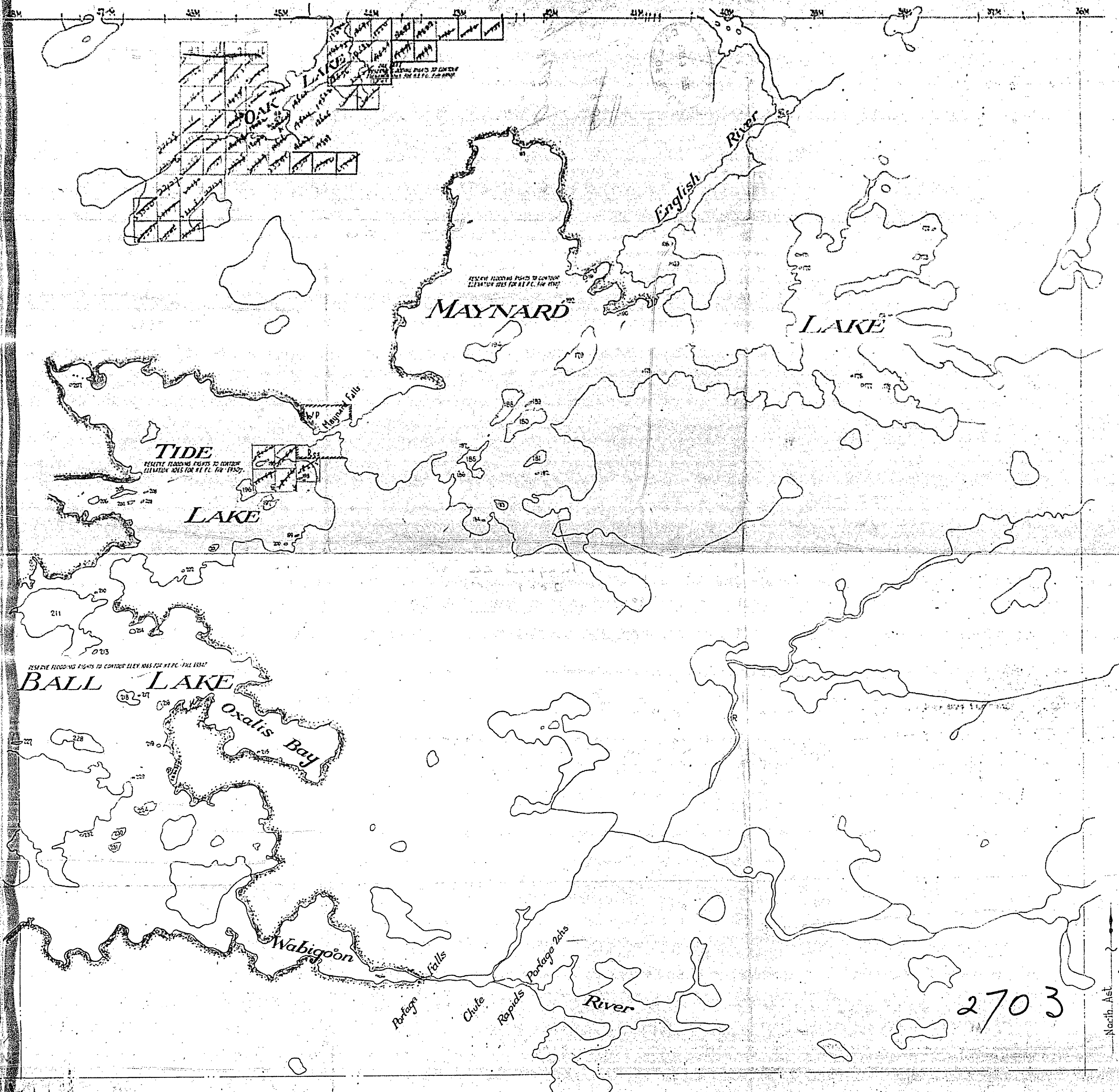


Lead withdrawn from staking & reserved for Power Sites, L. & F. Title, 89307-morched (thru)

Map 2009

Mining claims staked adjacent to Oak, Ball, Tide, Maynard, & various other Lakes & connecting Rivers, Recorded Subject to Flooding Rights.



Surface reservations 200' wide by Dept. of L. & F. shown hereon this map. This reservation to apply also along the shorelines of all islands lying within the areas delineated above.

Scale - 40 Chains = 1 Inch

TIDE L

MAY NARDS

2009

2703

2703

2703

North. Ast

G2473 OAK LAKE

LEGEND

- HIGHWAY AND ROUTE No.
- OTHER ROADS
- TRAILS
- SURVEYED LINES:
 - TOWNSHIPS, BASE LINES, ETC.
 - LOTS, MINING CLAIMS, PARCELS, ETC.
- UNSURVEYED LINES:
 - LOT LINES
 - PARCEL BOUNDARY
 - MINING CLAIMS ETC.
- RAILWAY AND RIGHT OF WAY
- UTILITY LINES
- NON-PERENNIAL STREAM
- FLOODING OR FLOODING RIGHTS
- SUBDIVISION OR COMPOSITE PLAN
- RESERVATIONS
- ORIGINAL SHORELINE
- MARSH OR MUSKEG
- MINES
- TRAVERSE MONUMENT
- TOURIST CAMPS (OP - OUTPOST)

DISPOSITION OF CROWN LANDS

TYPE OF DOCUMENT	SYMBOL
PATENT, SURFACE & MINING RIGHTS	
" SURFACE RIGHTS ONLY	
" MINING RIGHTS ONLY	
LEASE, SURFACE & MINING RIGHTS	
" SURFACE RIGHTS ONLY	
" MINING RIGHTS ONLY	
LICENCE OF OCCUPATION	
ORDER-IN-COUNCIL	
RESERVATION	
CANCELLED	
SAND & GRAVEL	

NOTE: MINING RIGHTS IN PARCELS PATENTED PRIOR TO MAY 8, 1913, VESTED IN ORIGINAL PATENTEES BY THE PUBLIC LANDS ACT, R.S.O. 1970, CHAP. 380, SEC. 63, SUBSEC. 1.

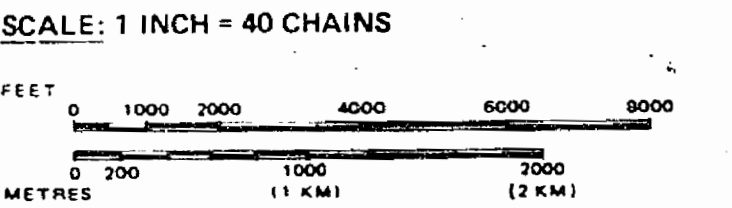
REFERENCES

- AREAS WITHDRAWN FROM DISPOSITION:
- M.R.O. - MINING RIGHTS ONLY
 - S.R.O. - SURFACE RIGHTS ONLY
 - M.+S. - MINING AND SURFACE RIGHTS

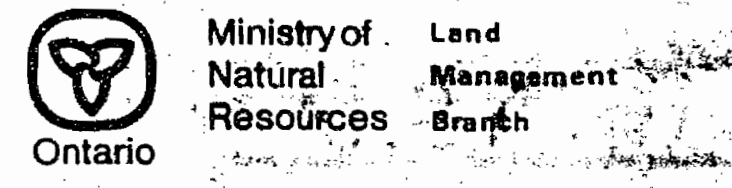
Description	Order No.	Date	Disposition	File
<i>Affectation</i>				
(B) W-K-2/97 FLOODING		JAN. 9/97	MRO	195150

NOTE "A"
FLOODING RIGHTS on the English River from Maynard Falls to Manitou Falls to contour elevation 108.5' reserved to Ont. H.E.P.C., including Maynard Lake, Oak Lake, Wilcox Lake, Conifer River, and Unexpected Lake 30 April 1957 H.E.P.C. Plan No. 116-e-513, (Surveys No H-134) Files: 62147, 693CT.

NOTE "B"
FLOODING RIGHTS on English River from Maynard Falls to Separation Rapids to contour 5 feet above high water mark to Ont. H.E.P.C. 30 Nov. 1959 File: 34119.

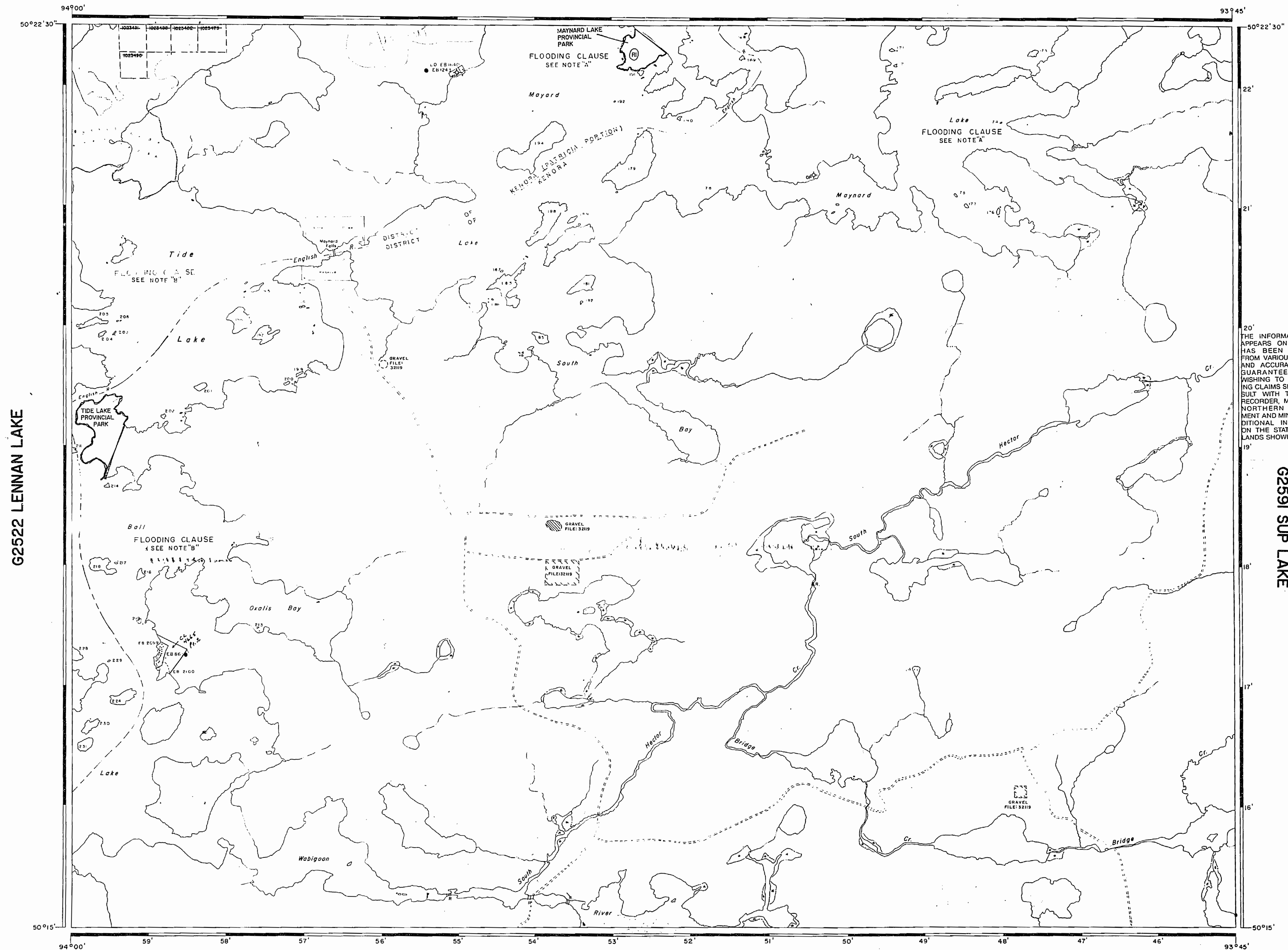


AREA
TIDE LAKE
M.N.R. ADMINISTRATIVE DISTRICT
KENORA
MINING DIVISION
KENORA
LAND TITLES / REGISTRY DIVISION
KENORA / KENORA (PATRICIA PORTION)



Date: FEBRUARY, 1994. Register: **G-2649**

THE INFORMATION THAT APPEARS ON THIS MAP HAS BEEN COMPILED FROM VARIOUS SOURCES, AND ACCURACY IS NOT GUARANTEED. THOSE WISHING TO STAKE MINING CLAIMS SHOULD CONSULT WITH THE MINING RECORDER, MINISTRY OF NORTHERN DEVELOPMENT AND MINES, FOR ADDITIONAL INFORMATION ON THE STATUS OF THE LANDS SHOWN HEREON.



G2612 DEADFISH LAKE

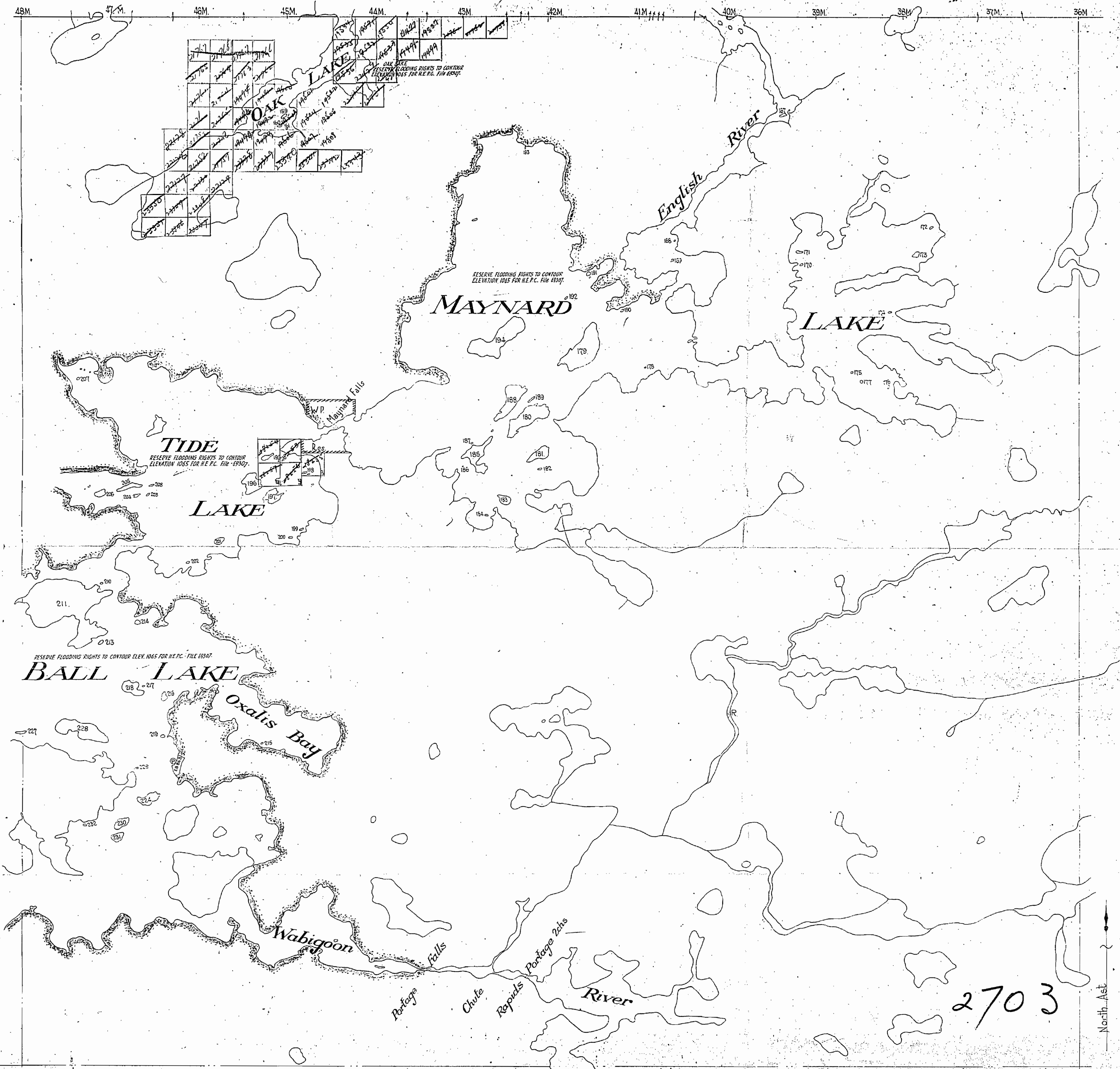
G2522 LENNAN LAKE

G2591 SUP LAKE

Land withdrawn from staking & reserved for Power Sites, L. & F. file 69307 - marked thus;

Mining claims staked adjacent to Oak, Ball, Tide, Maynard, & various other Lakes & connecting Rivers, Recorded Subject to Flooding Rights.

Map ~~2009~~ 2009



2703

Surface reservations 200' wide by Dept. of L & F shown hereon thus. This reservation to apply also along the shore lines of all islands lying within the areas delineated above.

Scale: 40 Chains = 1 inch

TIDE L

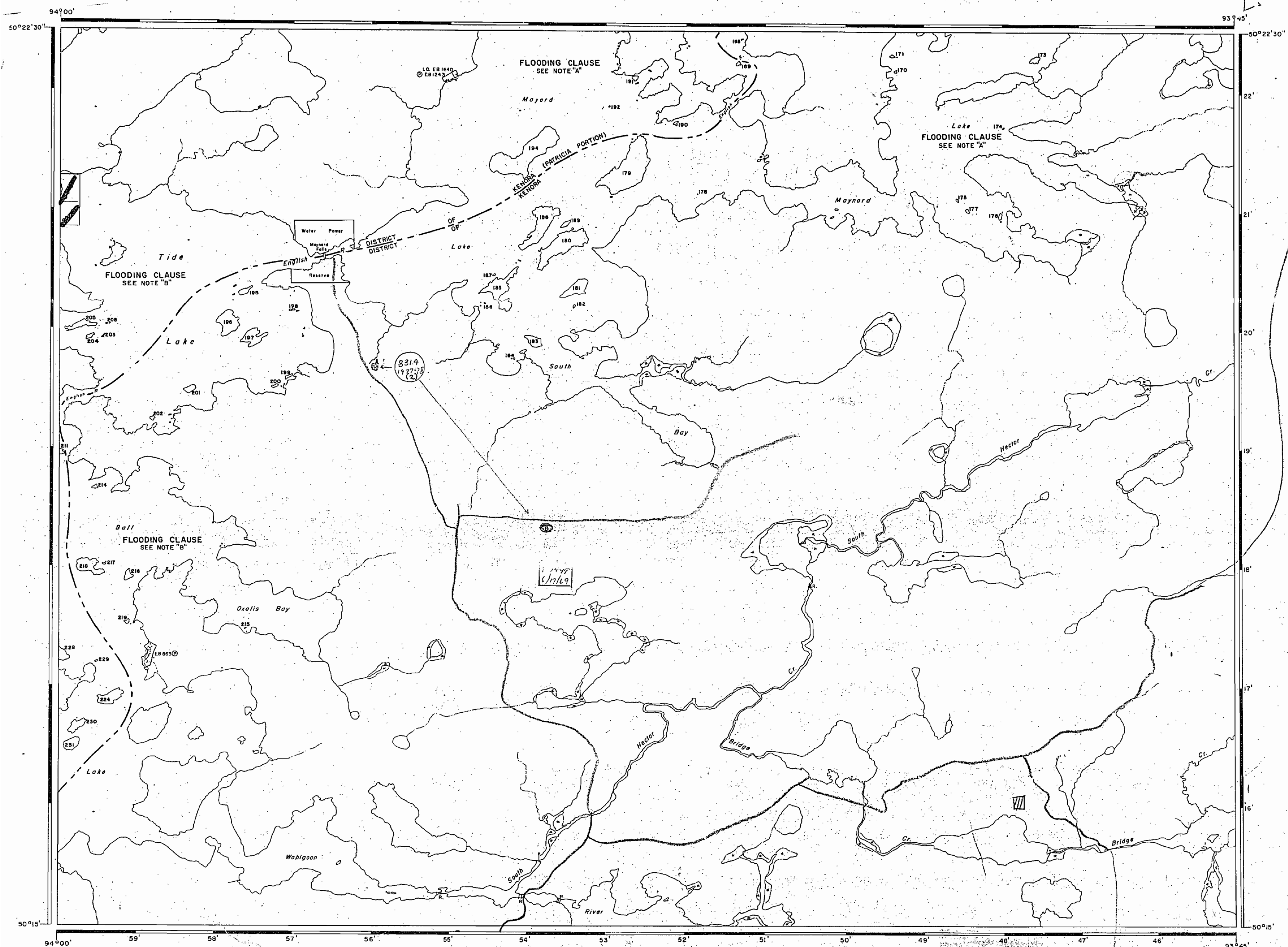
MAYNARD L.

2009

2703

2703

To BILL



AREA OF
TIDE LAKE
 DISTRICT OF
KENORA · KENORA
 (PATRICIA PORTION)
 KENORA
 MINING DIVISION
 SCALE: 1-INCH = 40 CHAINS

LEGEND

PATENTED LAND	Ⓟ
CROWN LAND SALE LEASES	Ⓢ
LOCATED LAND	Ⓛ
LICENSE OF OCCUPATION	Ⓛ.o.
MINING RIGHTS ONLY	M.R.O.
SURFACE RIGHTS ONLY	S.R.O.
ROADS	—
IMPROVED ROADS	—
KING'S HIGHWAYS	—
RAILWAYS	—
POWER LINES	—
MARSH OR MUSKEG	—
MINES	Ⓜ
CANCELLED	Ⓢ

NOTES

400' reserve around all lakes and rivers to Dept. of Lands & Forests.

FLOODING
NOTE "A"
 Flooding rights on the English River from Maynard Falls to Manitou Falls to contour elevation 1085' reserved to Ont. H.E.P.C., including Maynard Lake, Oak Lake, Wilcox Lake, Conifer River, and Unexpected Lake. 30 April 1957 H.E.P.C. Plan No. 116-e-513, (Surveys No.H-134) Files: 62147, 69307.

NOTE "B"
 Flooding rights on English River from Maynard Falls to Separation Rapids to contour 5 feet above high water mark to Ont. H.E.P.C. 30 Nov. 1959. File: 34119.

RECEIVED
 APR 24 1961
 KENORA MINING DIV.
 Feb 10/66

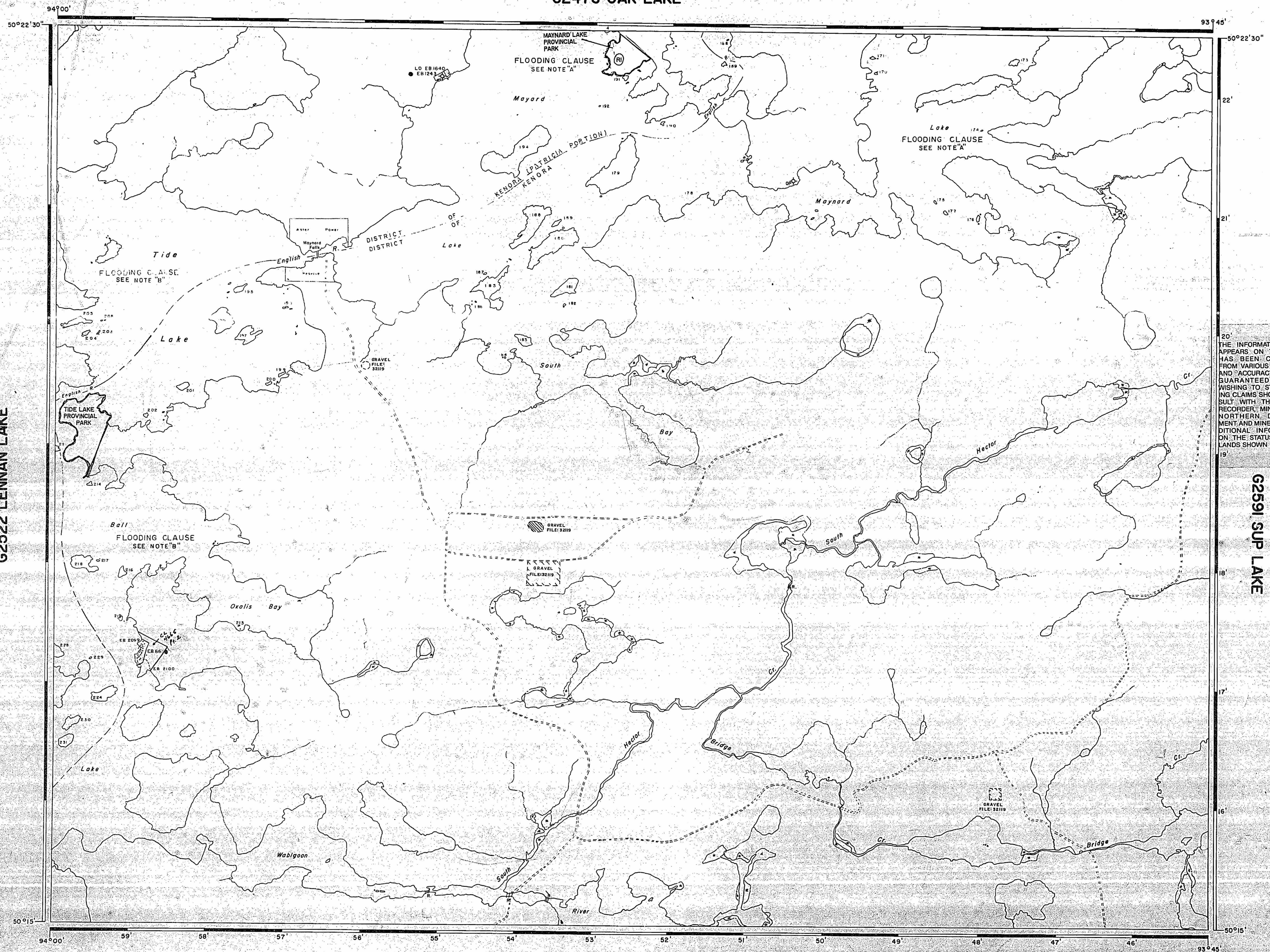
MAY 12/66

PLAN NO. M.2703

DEPARTMENT OF MINES
— ONTARIO —

TIDE LAKE M-2703

G2473 OAK LAKE



LEGEND

HIGHWAY AND ROUTE No.	
OTHER ROADS	
TRAILS	
SURVEYED LINES:	
TOWNSHIPS, BASE LINES, ETC.	
LOTS, MINING CLAIMS, PARCELS, ETC.	
UNSURVEYED LINES:	
LOT LINES	
PARCEL BOUNDARY	
MINING CLAIMS ETC.	
RAILWAY AND RIGHT OF WAY	
UTILITY LINES	
NON-PERENNIAL STREAM	
FLOODING OR FLOODING RIGHTS	
SUBDIVISION OR COMPOSITE PLAN	
RESERVATIONS	
ORIGINAL SHORELINE	
MARSH OR MUSKIE	
MINES	
TRAVERSE MONUMENT	
TOURIST CAMPS (OP - OUTPOST)	

DISPOSITION OF CROWN LANDS

TYPE OF DOCUMENT	SYMBOL
PATENT, SURFACE & MINING RIGHTS	
" SURFACE RIGHTS ONLY	
" MINING RIGHTS ONLY	
LEASE, SURFACE & MINING RIGHTS	
" SURFACE RIGHTS ONLY	
" MINING RIGHTS ONLY	
LICENCE OF OCCUPATION	
ORDER-IN-COUNCIL	OC
RESERVATION	
CANCELLED	
SAND & GRAVEL	

NOTE: MINING RIGHTS IN PARCELS PATENTED PRIOR TO MAY 6, 1912, VESTED IN ORIGINAL PATENTEES BY THE PUBLIC LANDS ACT, R.S.O. 1970, CHAP. 380, SEC. 63, SUBSEC. 1.

REFERENCES

AREAS WITHDRAWN FROM DISPOSITION

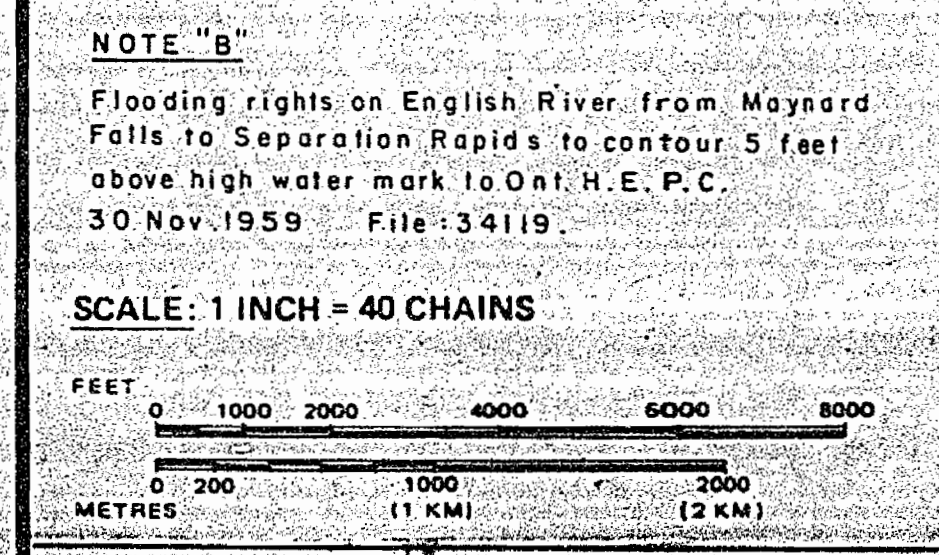
Description	Order No.	Date	Disposition	File
M.R.O. - MINING RIGHTS ONLY				
S.R.O. - SURFACE RIGHTS ONLY				
M.+S. - MINING AND SURFACE RIGHTS				

THE INFORMATION THAT APPEARS ON THIS MAP HAS BEEN COMPILED FROM VARIOUS SOURCES, AND ACCURACY IS NOT GUARANTEED. THOSE WISHING TO STAKE MINING CLAIMS SHOULD CONSULT WITH THE MINING RECORDER, MINISTRY OF NORTHERN DEVELOPMENT AND MINES, FOR ADDITIONAL INFORMATION ON THE STATUS OF THE LANDS SHOWN HEREON.

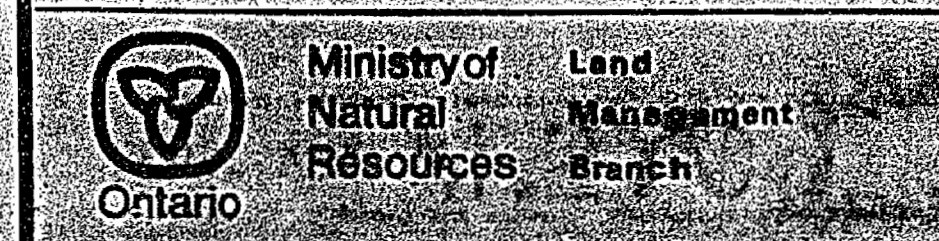
Kenora Mining Div. **RECEIVED** MAY 10 1984
 W.K. 2/97 JAN 9 1984 MRO 195150
 FLOODING 78.9.10.11.12.1.2.3.4.5.6

NOTE "A"
 Flooding rights on the English River from Maynard Falls to Manitou Falls to contour elevation 1085' reserved to Ont. H.E.P.C., including Maynard Lake, Oak Lake, Wilcox Lake, Conifer River, and Unspecified Lake; 30 April 1957. H.E.P.C. Plan No. 116-a-513, (Surveys No H-134) Files: 62147, 693CT.

NOTE "B"
 Flooding rights on English River from Maynard Falls to Separation Rapids to contour 5 feet above high water mark to Ont. H.E.P.C. 30 Nov. 1959 File: 34119.



AREA
TIDE LAKE
 M.N.R. ADMINISTRATIVE DISTRICT
KENORA
 MINING DIVISION
KENORA
 LAND TITLES / REGISTRY DIVISION
KENORA / KENORA (PATRICIA PORTION)



Date: JANUARY 1984
 Number: **2649**

G2522 LENNAN LAKE

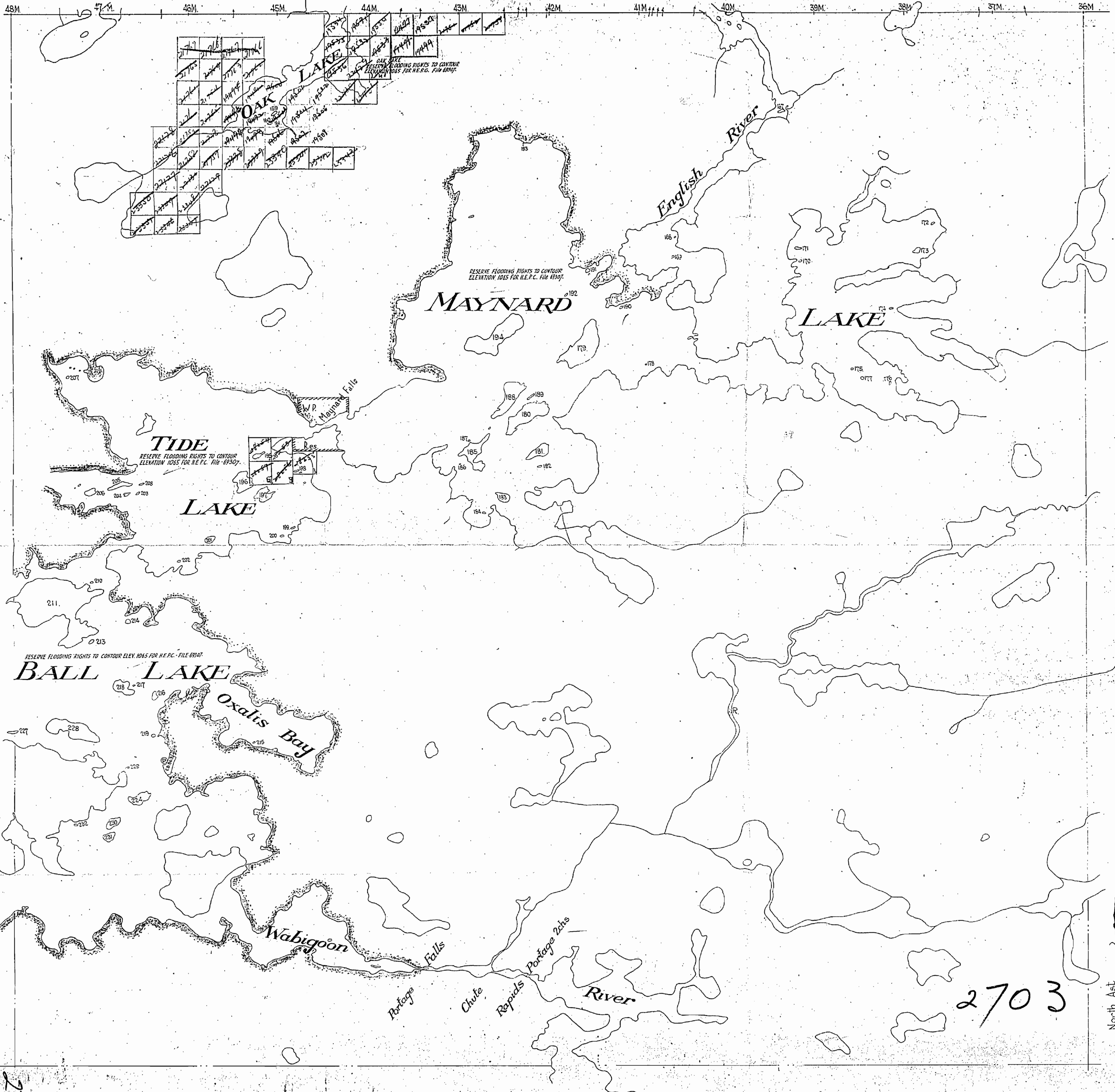
G2591 SUP LAKE

G2612 DEADFISH LAKE

Land withdrawn from staking & reserved for Power Sites, L. & F. file. 69507 - marked thus:

Mining claims staked adjacent to, Oak, Ball, Tide, Maynard, & various other Lakes & connecting Rivers, Recorded Subject to Flooding Rights.

Map ~~2009~~ 2009



2703

Surface reservations 200' wide by Dept. of L & F shown hereon that this reservation is apply also along the shore line of all islands lying within the areas delineated above.

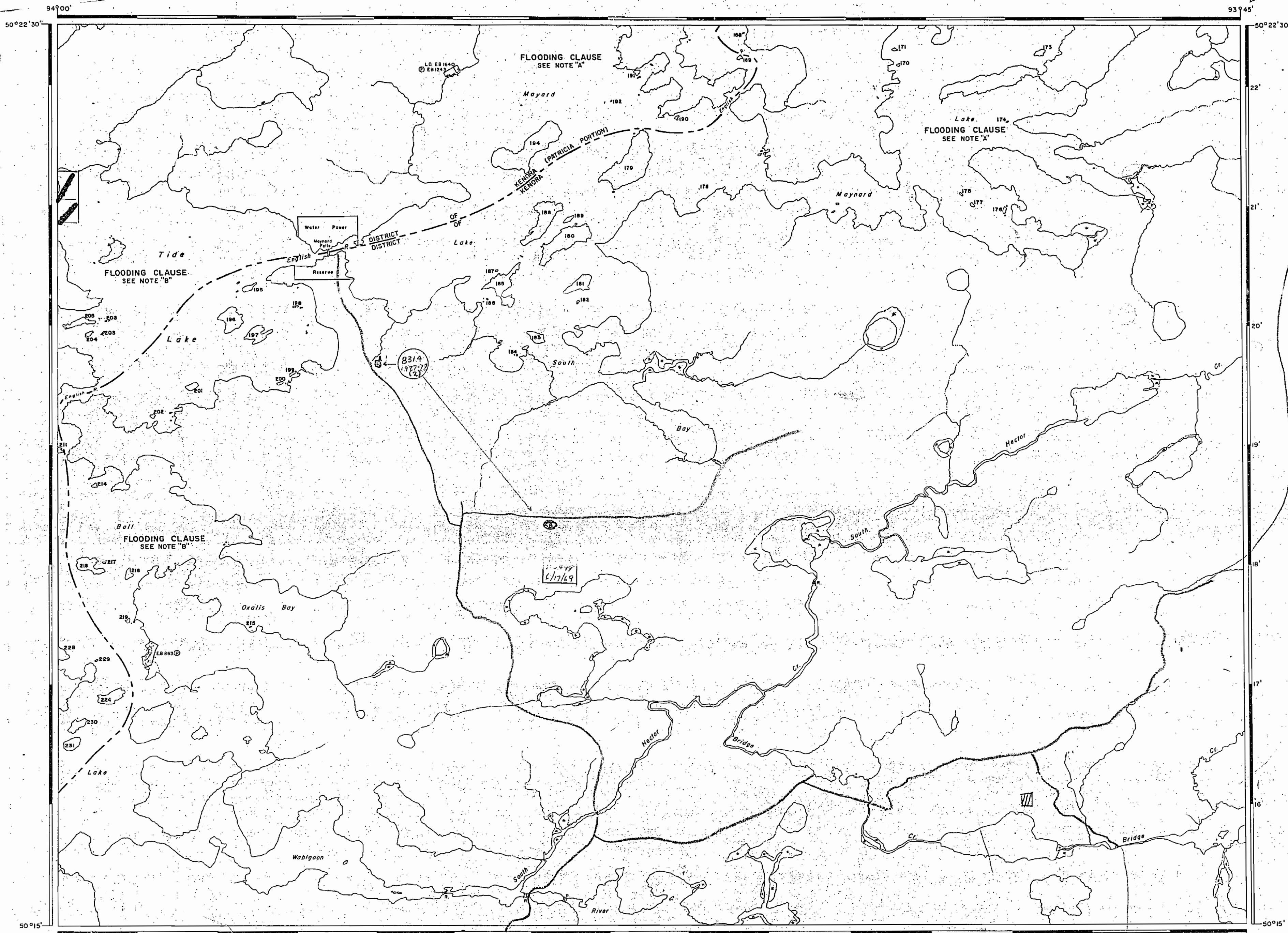
Scale: 40 Chains = 1 Inch
MAYNARD
2009
2703

TIDE L
2703

2703

2703

To Ball



AREA OF
TIDE LAKE
 DISTRICT OF
KENORA - KENORA
 (PATRICIA PORTION)
 KENORA
 MINING DIVISION
 SCALE: 1-INCH = 40 CHAINS

LEGEND

PATENTED LAND	Ⓟ
CROWN LAND SALE	C.S.
LEASES	Ⓞ
LOCATED LAND	Loc.
LICENSE OF OCCUPATION	L.O.
MINING RIGHTS ONLY	M.R.O.
SURFACE RIGHTS ONLY	S.R.O.
ROADS	—
IMPROVED ROADS	—
KING'S HIGHWAYS	—
RAILWAYS	—
POWER LINES	—
MARSH OR MUSKEG	—
MINES	⋆
CANCELLED	C.

NOTES

400' reserve around all lakes and rivers to Dept. of Lands & Forests.

FLOODING NOTE "A"
 Flooding rights on the English River from Maynard Falls to Manitou Falls to contour elevation 1085' reserved to Ont. H.E.P.C., including Maynard Lake, Oak Lake, Wilcox Lake, Conifer River, and Unexpected Lake: 30 April 1957 H.E.P.C. Plan No. 116-e-513, (Surveys No. H-134) Files: 62147, 69307.

NOTE "B"
 Flooding rights on English River from Maynard Falls to Separation Rapids to contour 5 feet above high water mark to Ont. H.E.P.C. 30 Nov. 1959. File: 34119.

RECEIVED
 APR 24 1961
 KENORA MINING DIV.
 Jul 10/66

MAY 12/66

PLAN NO. **M.2703**
 DEPARTMENT OF MINES
 — ONTARIO —

TIDE LAKE M-2703