

**PLAN OF**  
**TROUT LAKE RIVER AREA,**  
**AND**  
**JOYCE LAKE & RIVER AREA.**  
**DISTRICT OF KENORA, PATRICIA PORTION.**  
**RED LAKE MINING DIVISION,**

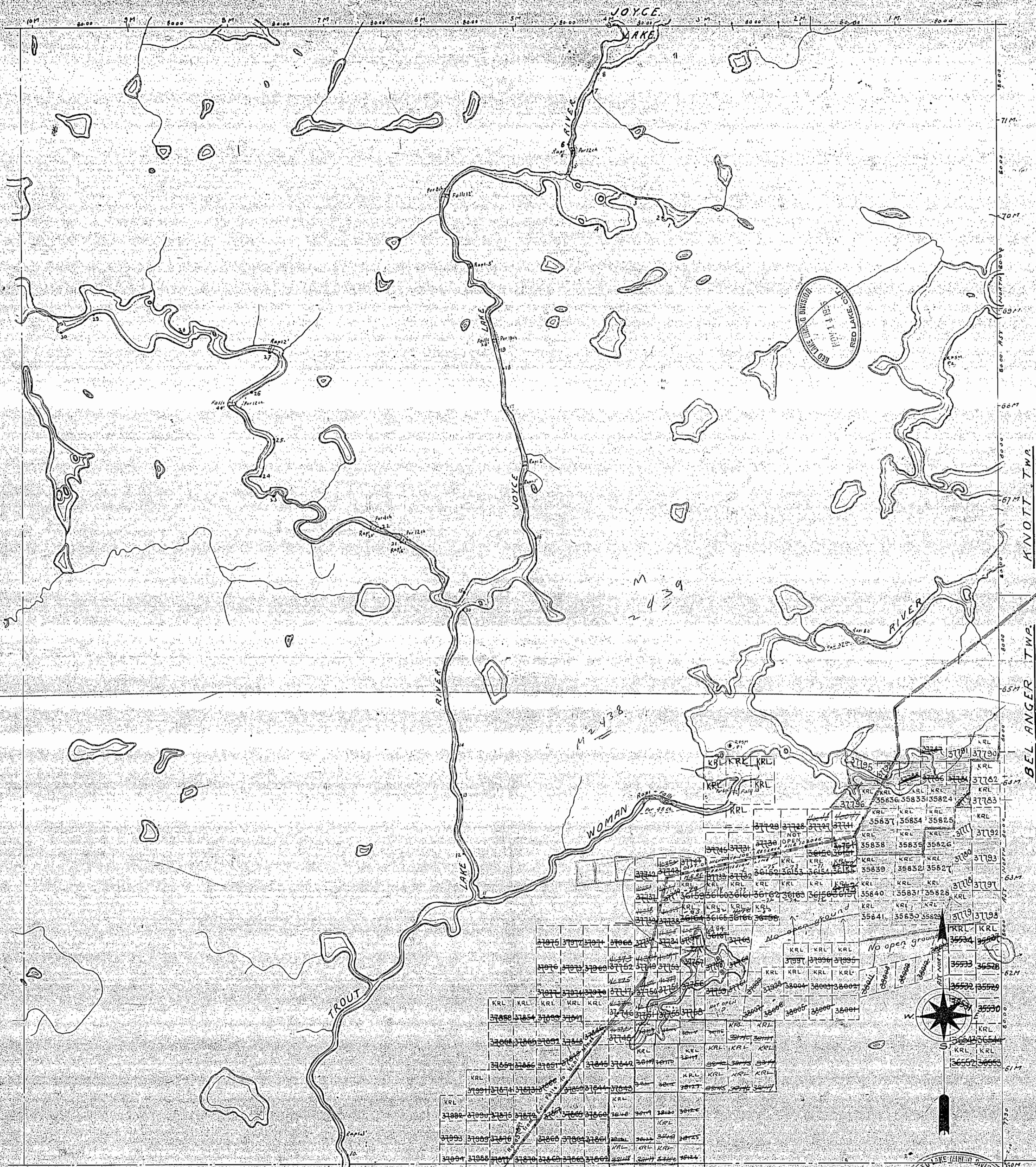
Scale: 40 chains to an inch.

**M-2213**

East 301 of  
 East Meridian by G.S. No. 100  
 North Base by G.S. No. 100  
 Township of Joyce Lake, Trout Lake Area, Patricia Portion, District of Kenora, Manitoba  
 1917. Traversed by G.S. No. 100  
 Geographical Survey General, Department of the Interior, Ottawa, Ontario  
 Office of the Surveyor General, Department of the Interior, Ottawa, Ontario  
 Printed and Published by the Surveyor General, Department of the Interior, Ottawa, Ontario  
 JUL 16 1954  
 RED LAKE ONT.

Compiled - Nov. 1915

2213



**PLAN OF  
TROUT LAKE RIVER AREA,  
AND  
JOYCE LAKE & RIVER AREA.**

**DISTRICT OF KENORA & PATRICIA PORTION.**

**RED LAKE MINING DIVISION**

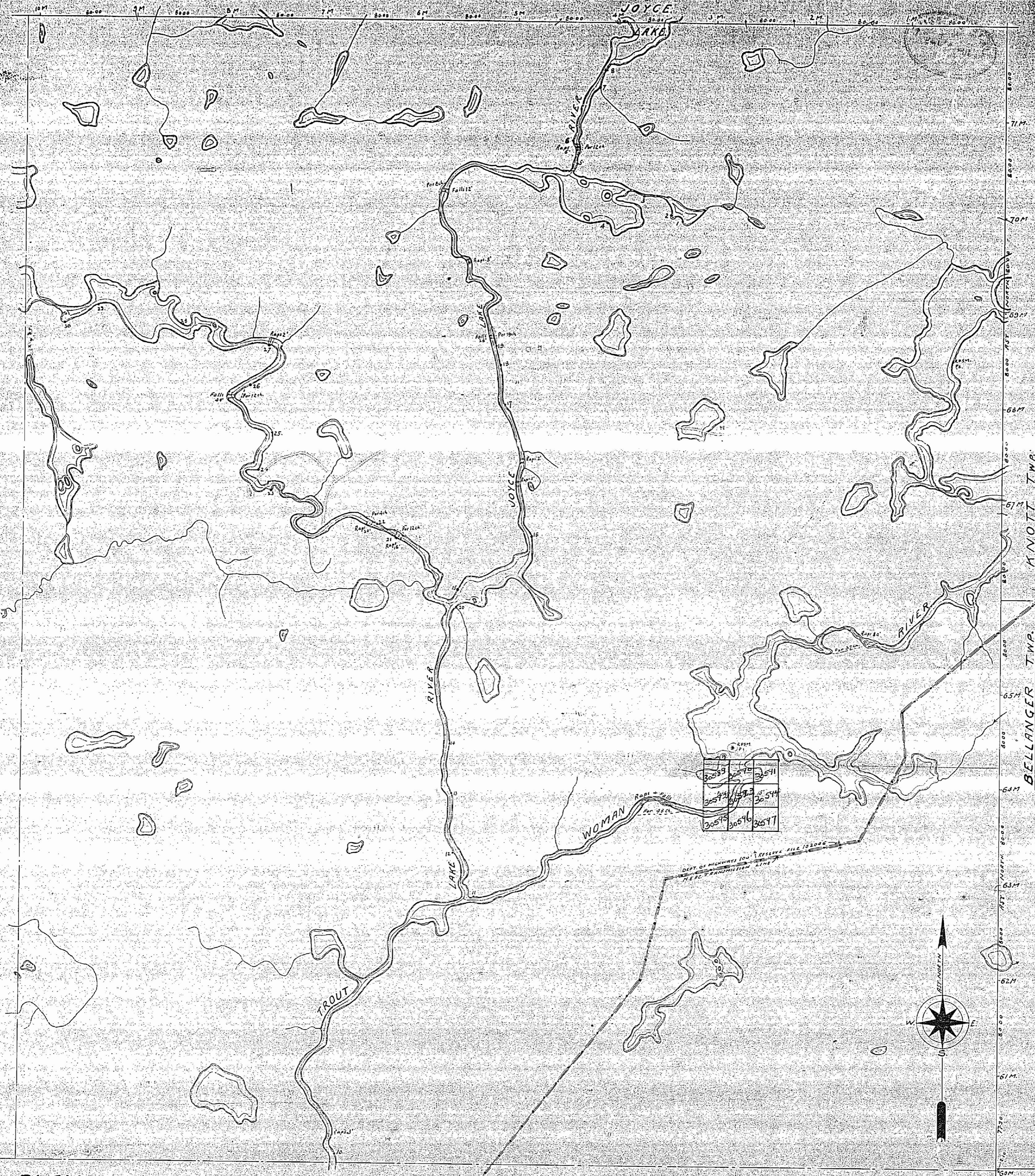
Scale: 40 chains to an inch.

**M.2213**

East Bay of  
East Meridian by O.S. No. 1920  
North Base by O.S. No. 1920  
Traverse of Joyce Lake, Trout Lake River, Joyce Lake River by O.S. No. 1920  
1927 Traverse maintained, shown as 1927  
Geographical Survey Control, Toronto, Ontario, Dominion Dept. of Interior  
Office of the Surveyor General, Ontario, Dominion Dept. of Interior  
Power Transmission Line, Jackson Station, Cooksland, Gold River, Ltd., Co. No. 1000, Woman Lake  
2500 S.W. 1/4 Sec. 18, Twp. 66 N., R. 20 W., Dist. No. 1920  
Compiled: Nov. 1955

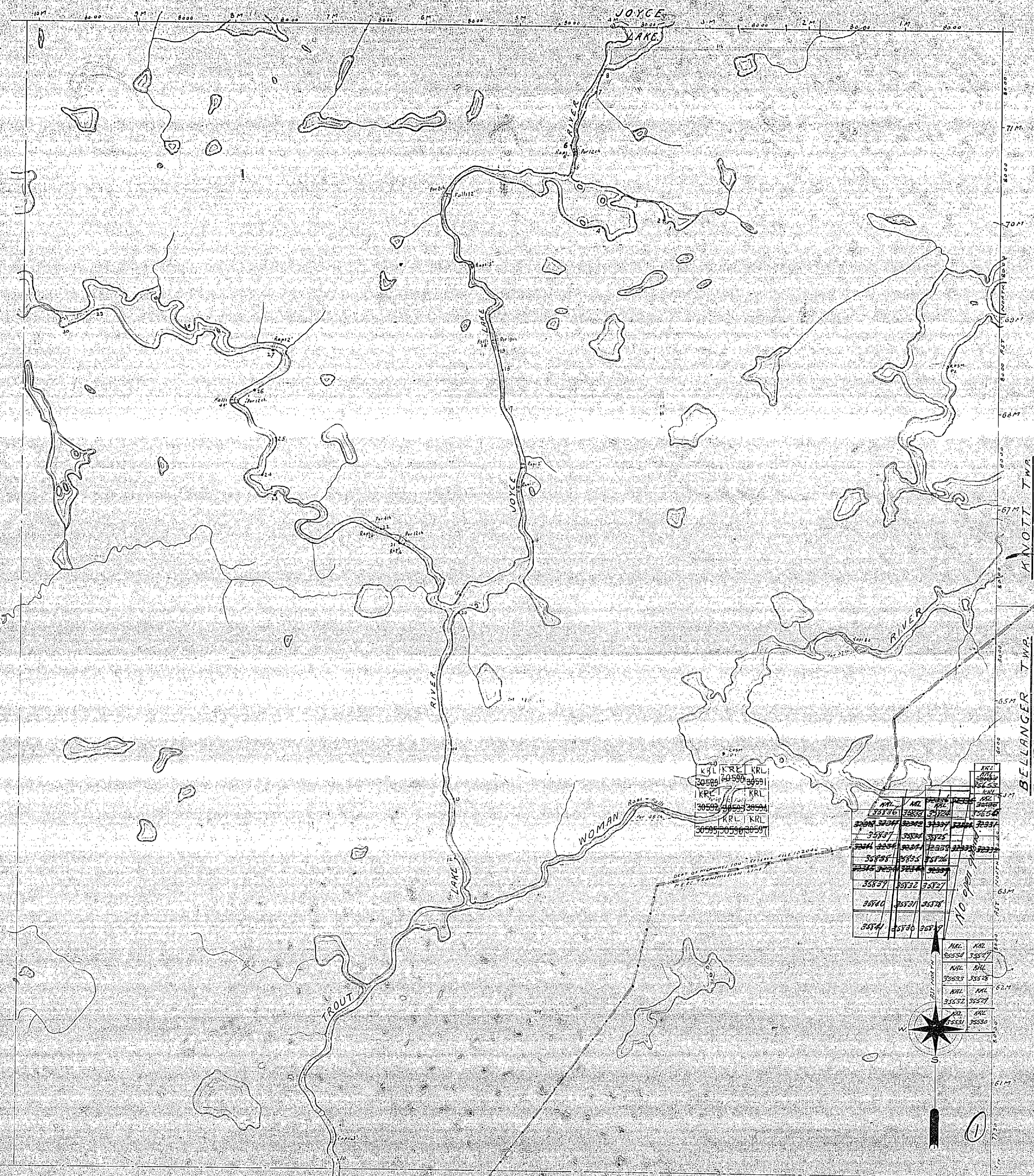
RED LAKE MINING DIVISION  
NOV 14 1955  
RED LAKE, ONT.

M-2213



PLAN OF  
**TROUT LAKE RIVER AREA,**  
**AND**  
**JOYCE LAKE & RIVER AREA.**  
DISTRICT OF KENORA & PATRICIA PORTION.  
 RED LAKE MINING DIVISION,  
 Scale: 40 chains to an inch. **M. 2213**

Contour lines by 100 ft. 1935  
 North Base by 100 ft. 1935  
 Name of Joyce Lake, Trout Lake River, Woman River, and other water courses  
 1937. Tourist map, same as this. 1937  
 Topographic Survey, Central District, Dominion Dept. of Interior  
 1937. Tourist map, same as this. 1937  
 Other Lakes & Rivers from Survey Dept. Topographic Survey, Dominion Dept. of Interior  
 1937. Tourist map, same as this. 1937  
 Power Transmission Line from Ontario Hydro-Electric Commission, 1937. 1937. Woman Lake  
 by 100 ft. 1935. 1935. Surveyed by C. F. Dyer, O.S. 1935  
 Compiled: Nov. 1935.



**PLAN OF**  
**TROUT LAKE RIVER AREA,**  
**AND**  
**JOYCE LAKE & RIVER AREA.**  
**DISTRICT OF KENORA & PATRICIA PORTION.**  
**RED LAKE MINING DIVISION.**  
 Scale: 40 chains to an inch. **M. 2213**

Laid down by  
 Carl Wood on April 14, 1922  
 Work done by Carl Wood & J. J. O'Connell, S.M.  
 Checked by J. J. O'Connell, S.M.  
 (2) Geological Survey, Ottawa, Ontario  
 Geographical Survey, Ottawa, Ontario  
 Office of the Surveyor General, Ottawa, Ontario  
 (3) J. J. O'Connell, S.M.  
 River flows in the direction of the Joyce River, and the Joyce River flows into the Trout Lake River.  
 (4) J. J. O'Connell, S.M.  
 Compiled, Nov. 1925

KRL	KRL	KRL	KRL	KRL
30598	30599	30600	30601	30602
KRL	KRL	KRL	KRL	KRL
30593	30594	30595	30596	30597
KRL	KRL	KRL	KRL	KRL
30598	30599	30600	30601	30602
KRL	KRL	KRL	KRL	KRL
30593	30594	30595	30596	30597
KRL	KRL	KRL	KRL	KRL
30598	30599	30600	30601	30602
KRL	KRL	KRL	KRL	KRL
30593	30594	30595	30596	30597
KRL	KRL	KRL	KRL	KRL
30598	30599	30600	30601	30602
KRL	KRL	KRL	KRL	KRL
30593	30594	30595	30596	30597
KRL	KRL	KRL	KRL	KRL
30598	30599	30600	30601	30602

LOCAL COTTAGE

M. 2212

M. 2212

LITTLE VERMILION LAKE

Nungesser Creek

Creek

Coli Creek

Coli Lake

Anderson Lake

TROUT LAKE

MCDONOUGH

BATEMAN

SHAVERR

Scale: 40 CHAINS = 1 INCH.

M. 2212

Surface elevations 200' and over from sea level. Contour interval 20'. All elevations are in feet. The boundary lines shown are the result of a survey conducted in 1912.

29720	29725	29730	29735	29740
29725	29730	29735	29740	29745
29730	29735	29740	29745	29750
29735	29740	29745	29750	29755
29740	29745	29750	29755	29760

