

609

VALENTINE

PORCUPINE MINING DIVISION

DATE OF ISSUE

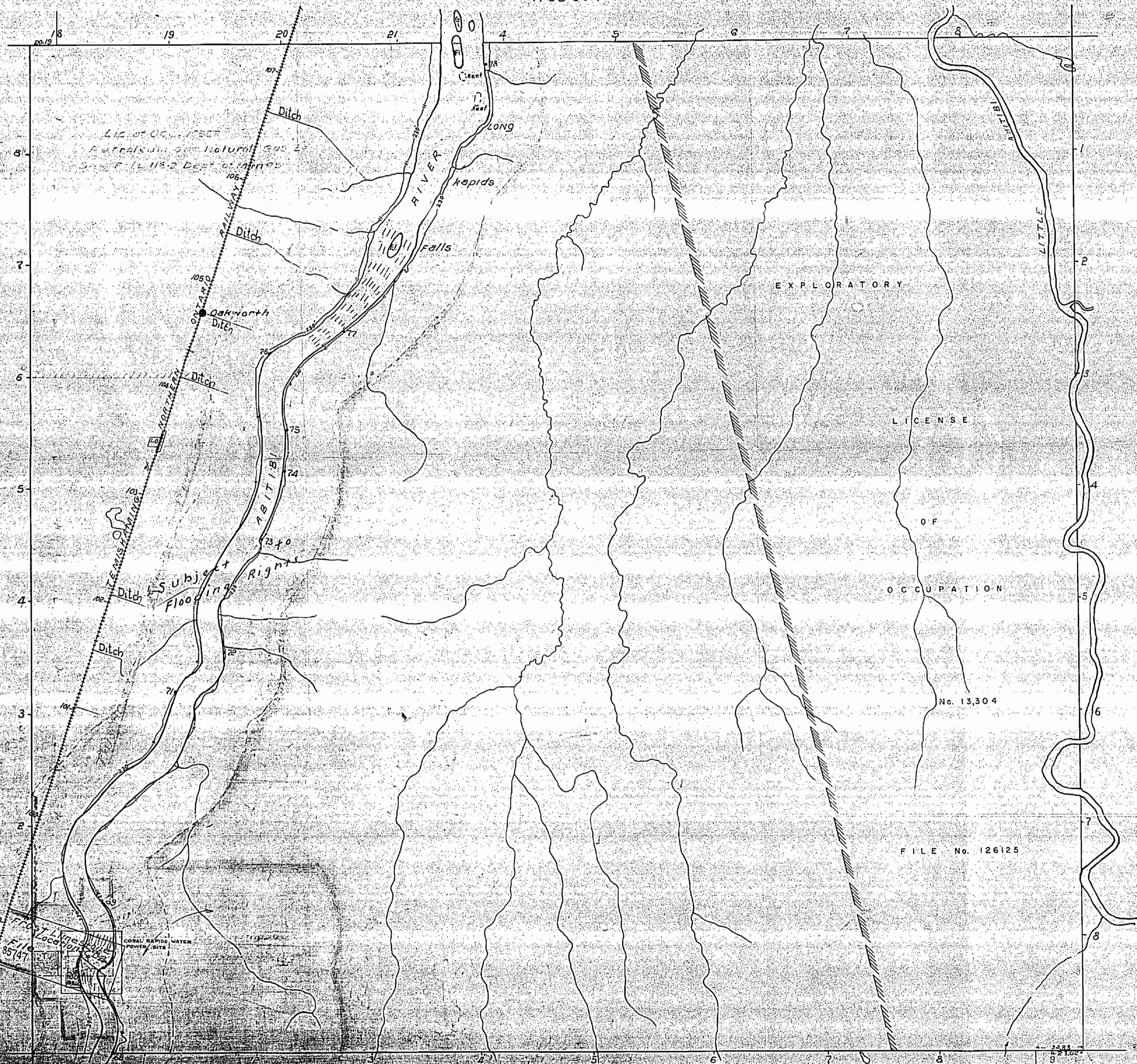
DEC 18 1961

ONTARIO DEPT. OF MINES

ONT. DEPT. OF MINES  
MINING LANDS BR.  
THIS MAP FOR CHECKING  
PURPOSES ONLY - MUST  
NOT BE SOLD.

Scale 40 Chains = 1 inch

HOBSON



This Twp. withdrawn from staking under Ont.  
Regulation 9/59 dated Jan 28 1959

609

Hobson Twp. - M. 503

Kilmer Twp. - M. 519

Pitt Twp. - M. 569

THE TOWNSHIP OF  
**VALENTINE**  
 DISTRICT OF COCHRANE  
 PORCUPINE MINING DIVISION  
 SCALE: 1-INCH = 40 CHAINS

**LEGEND**

PATENTED LAND	⊙
CROWN LAND SALE	C.S.
LEASES	⊖
LOCATED LAND	Loc
LICENSE OF OCCUPATION	L.O.
MINING RIGHTS ONLY	M.R.O.
SURFACE RIGHTS ONLY	S.R.O.
ROADS	—
IMPROVED ROADS	—
KING'S HIGHWAYS	—
RAILWAYS	—
POWER LINES	—
MARSH OR MUSKEG	—
MINES CANCELLED	—

**NOTES**

400' Surface Rights Reservation along the shores of all lakes and rivers.

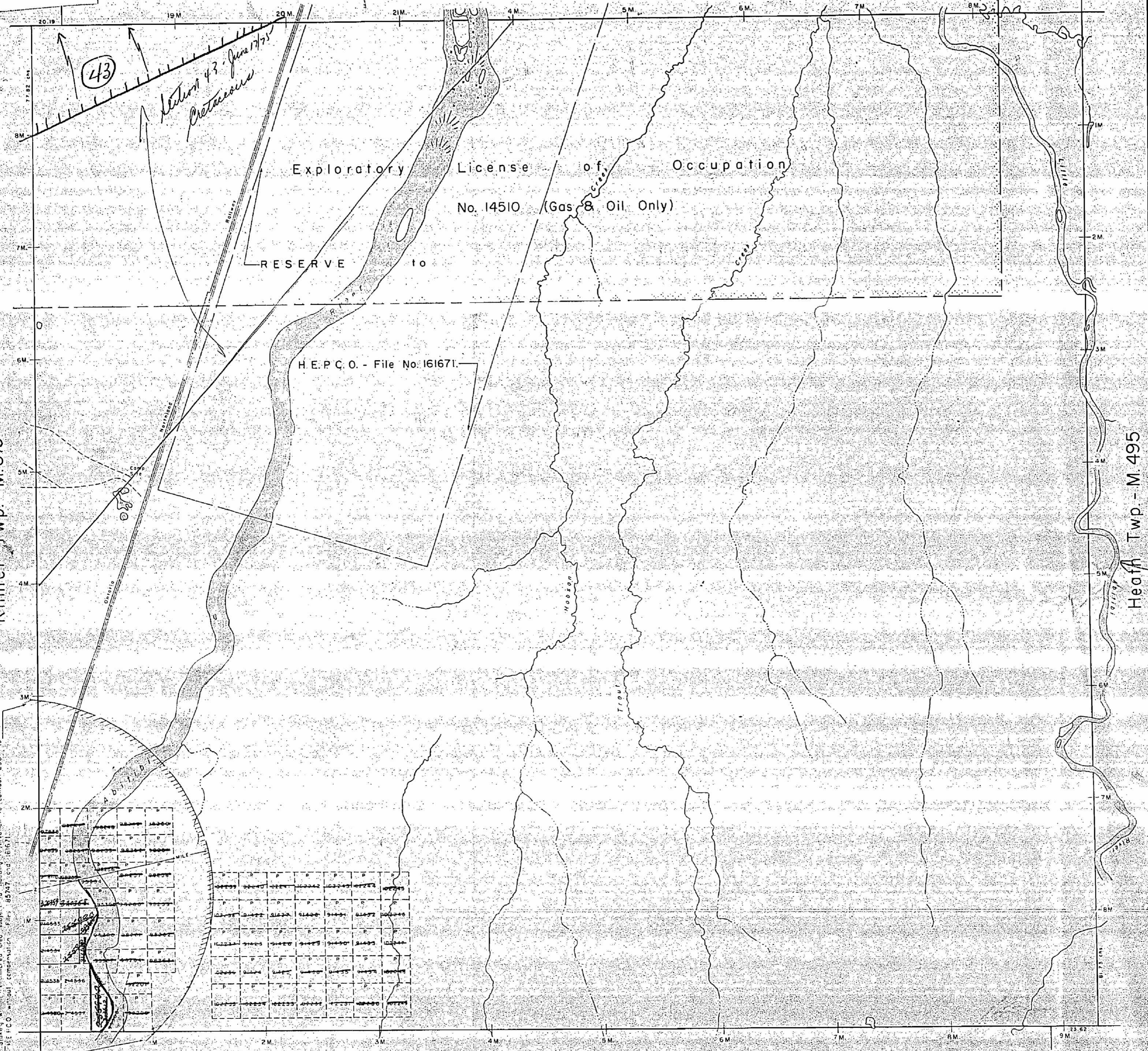
Staking on bed of Abitibi River subject to Flooding Rights Reservation to H.E.P.C. up to elevations of 230' and 295' along the river - File No. 161671.

*WAS TOWNSHIP WITHDRAWN FROM STAKING UNDER SEC. 43 LETTER MARCH 24/12 FILE (19)*

④3 MAR 10 1975 Se. 8 me. 111111

RECEIVED  
 JAN 14 1970  
 AM 7,8,9,10,11,12,1,2,3,4,5,6 PM

PLAN NO. **M-609**  
 DEPARTMENT OF MINES  
 - ONTARIO -



43

*Section 43 - June 17/51  
 Cretaceous*

Exploratory License of Occupation

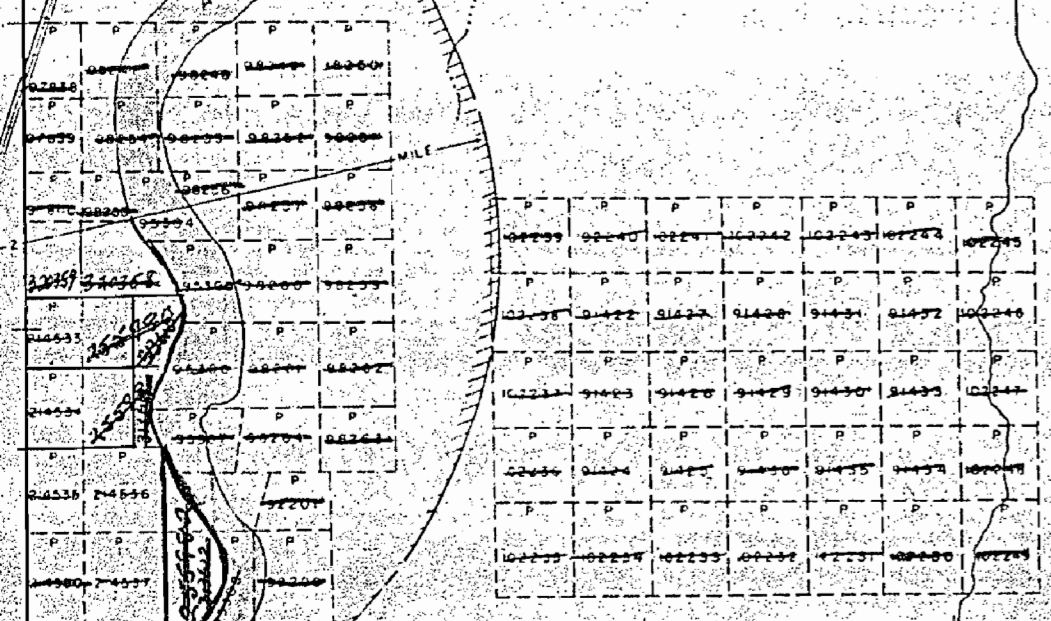
No. 14510 (Gas & Oil Only)

RESERVE to

H.E.P.C.O. - File No. 161671.

Hearth Twp. - M. 495

Shaded area subject to flooding reservation to contour 295' to H.E.P.C.O. without compensation. Files 85247 and 161671.



609

Hobson Twp. - M.503

THE TOWNSHIP OF

VALENTINE

DISTRICT OF COCHRANE

PORCUPINE MINING DIVISION

SCALE: 1-INCH = 40 CHAINS

LEGEND

- PATENTED LAND Ⓟ
- CROWN LAND SALE C.S.
- LEASES Ⓛ
- LOCATED LAND Loc.
- LICENSE OF OCCUPATION L.O.
- MINING RIGHTS ONLY M.R.O.
- SURFACE RIGHTS ONLY S.R.O.
- ROADS —
- IMPROVED ROADS —
- KING'S HIGHWAYS —
- RAILWAYS —
- POWER LINES —
- MARSH OR MUSKEG —
- MINES —
- CANCELLED —

NOTES

400' Surface Rights Reservation along the shores of all lakes and rivers.

Staking on bed of Abitibi River subject to Flooding Rights Reservation to H.E.P.C.O. up to elevations of 230' and 295' along the river - File No. 161671.

Surface and Mining Rights withdrawn from staking under Section 43 of the Mining Act (R.S.O.1970), Order No. W.18/75, File: 7598 v.5, Date: March 10, 1975.

Surface and Mining Rights withdrawn from staking under Section 43 of the Mining Act (R.S.O.1970), Order No. W. 30/75, File No. 7598 vol. 5, Date: June 17, 1975.

Exploratory License of Occupation No. 14510 (Gas & Oil Only)

RESERVE

H.E.P.C.O - File No. 161671

THIS TOWNSHIP COVERED BY

EXPLORATORY LICENCE OF OCCUPATION

No. 14868

Silica Sand  
File 161671  
P.P. appl.

Surface & Mining Rights  
Withdrawn from Staking  
Sept 21, 1977

Staking within the hatched area subject to flooding reservation to contour 295' to H.E.P.C.O. without compensation. Files: 83747 and 161671.

W79010	W79011
W79012	W79013
W79014	W79015
W79016	W79017
W79018	W79019
W79020	W79021

Kilmer Twp. - M.519

Heath Twp. - M.495

Pitt Twp. - M.569

DATE OF ISSUE  
JUL 15 1975

RECEIVED  
JUL 22 1975  
AM 7 18 19 10 11 12 1 2 13 14 15 16 PM

PLAN NO. M-609

ONTARIO  
MINISTRY OF NATURAL RESOURCES  
SURVEYS AND MAPPING BRANCH

Hobson Twp. - M.503

THE TOWNSHIP OF  
VALENTINE

DISTRICT OF COCHRANE

PORCUPINE MINING DIVISION

SCALE: 1-INCH 40 CHAINS

LEGEND

PATENTED LAND	Ⓟ
CROWN LAND SALE	C.S.
LEASES	Ⓛ
LOCATED LAND	Loc
LICENSE OF OCCUPATION	L.O.
MINING RIGHTS ONLY	M.R.O.
SURFACE RIGHTS ONLY	S.R.O.
ROADS	—
IMPROVED ROADS	—
KING'S HIGHWAYS	—
RAILWAYS	—
POWER LINES	—
MARSH OR MUSKEG	—
MINES	—
CANCELLED	—

NOTES

400 Surface Rights Reservation along the shores of all lakes and rivers.  
Staking on bed of Abitibi River subject to Flooding Rights Reservation to H.E.P.C. up to elevations of 230' and 295' along the river - File No. 161671.

Kilmer Twp. - M.519

Heath Twp. - M.495

Pitt Twp. - M.569

Surface and Mining Rights withdrawn from staking under Section 43 of the Mining Act (R.S.O.1970) Order No. W. 18/75, File: 7598 v. 5, Date: March 10, 1975.

Surface and Mining Rights withdrawn from staking under Section 43 of the Mining Act (R.S.O.1970) Order No. W. 30/75, File No. 7598 vol. 5, Date: June 17, 1975.

H.E.P.C.O - File No. 161671

Silica Sand File 161671

~~SURFACE and MINING RIGHTS Withdrawn from Staking~~  
~~Sec. 43 of Mining Act, Order No. W. 75/77~~  
~~Sep. 21/77 File 192501~~  
~~Expl. Lic. of Occupation # 14879~~  
~~Cancelled Nov. 28/76~~

Staking within the hatched area subject to flooding reservation to contour 295' to H.E.P.C.O. without compensation. File: 63747 et seq. 161671.

525549	525544
525548	525543
525547	525542
525546	525541
525545	525540
525544	525539
525543	525538
525542	525537
525541	525536
525540	525535
525539	525534
525538	525533
525537	525532
525536	525531
525535	525530
525534	525529
525533	525528
525532	525527
525531	525526
525530	525525
525529	525524
525528	525523
525527	525522
525526	525521
525525	525520
525524	525519
525523	525518
525522	525517
525521	525516
525520	525515
525519	525514
525518	525513
525517	525512
525516	525511
525515	525510
525514	525509
525513	525508
525512	525507
525511	525506
525510	525505
525509	525504
525508	525503
525507	525502
525506	525501
525505	525500
525504	525499
525503	525498
525502	525497
525501	525496
525500	525495
525499	525494
525498	525493
525497	525492
525496	525491
525495	525490
525494	525489
525493	525488
525492	525487
525491	525486
525490	525485
525489	525484
525488	525483
525487	525482
525486	525481
525485	525480
525484	525479
525483	525478
525482	525477
525481	525476
525480	525475
525479	525474
525478	525473
525477	525472
525476	525471
525475	525470
525474	525469
525473	525468
525472	525467
525471	525466
525470	525465
525469	525464
525468	525463
525467	525462
525466	525461
525465	525460
525464	525459
525463	525458
525462	525457
525461	525456
525460	525455
525459	525454
525458	525453
525457	525452
525456	525451
525455	525450
525454	525449
525453	525448
525452	525447
525451	525446
525450	525445
525449	525444
525448	525443
525447	525442
525446	525441
525445	525440
525444	525439
525443	525438
525442	525437
525441	525436
525440	525435
525439	525434
525438	525433
525437	525432
525436	525431
525435	525430
525434	525429
525433	525428
525432	525427
525431	525426
525430	525425
525429	525424
525428	525423
525427	525422
525426	525421
525425	525420
525424	525419
525423	525418
525422	525417
525421	525416
525420	525415
525419	525414
525418	525413
525417	525412
525416	525411
525415	525410
525414	525409
525413	525408
525412	525407
525411	525406
525410	525405
525409	525404
525408	525403
525407	525402
525406	525401
525405	525400
525404	525399
525403	525398
525402	525397
525401	525396
525400	525395
525399	525394
525398	525393
525397	525392
525396	525391
525395	525390
525394	525389
525393	525388
525392	525387
525391	525386
525390	525385
525389	525384
525388	525383
525387	525382
525386	525381
525385	525380
525384	525379
525383	525378
525382	525377
525381	525376
525380	525375
525379	525374
525378	525373
525377	525372
525376	525371
525375	525370
525374	525369
525373	525368
525372	525367
525371	525366
525370	525365
525369	525364
525368	525363
525367	525362
525366	525361
525365	525360
525364	525359
525363	525358
525362	525357
525361	525356
525360	525355
525359	525354
525358	525353
525357	525352
525356	525351
525355	525350
525354	525349
525353	525348
525352	525347
525351	525346
525350	525345
525349	525344
525348	525343
525347	525342
525346	525341
525345	525340
525344	525339
525343	525338
525342	525337
525341	525336
525340	525335
525339	525334
525338	525333
525337	525332
525336	525331
525335	525330
525334	525329
525333	525328
525332	525327
525331	525326
525330	525325
525329	525324
525328	525323
525327	525322
525326	525321
525325	525320
525324	525319
525323	525318
525322	525317
525321	525316
525320	525315
525319	525314
525318	525313
525317	525312
525316	525311
525315	525310
525314	525309
525313	525308
525312	525307
525311	525306
525310	525305
525309	525304
525308	525303
525307	525302
525306	525301
525305	525300
525304	525299
525303	525298
525302	525297
525301	525296
525300	525295
525299	525294
525298	525293
525297	525292
525296	525291
525295	525290
525294	525289
525293	525288
525292	525287
525291	525286
525290	525285
525289	525284
525288	525283
525287	525282
525286	525281
525285	525280
525284	525279
525283	525278
525282	525277
525281	525276
525280	525275
525279	525274
525278	525273
525277	525272
525276	525271
525275	525270
525274	525269
525273	525268
525272	525267
525271	525266
525270	525265
525269	525264
525268	525263
525267	525262
525266	525261
525265	525260
525264	525259
525263	525258
525262	525257
525261	525256
525260	525255
525259	525254
525258	525253
525257	525252
525256	525251
525255	525250
525254	525249
525253	525248
525252	525247
525251	525246
525250	525245
525249	525244
525248	525243
525247	525242
525246	525241
525245	525240
525244	525239
525243	525238
525242	525237
525241	525236
525240	525235
525239	525234
525238	525233
525237	525232
525236	525231
525235	525230
525234	525229
525233	525228
525232	525227
525231	525226
525230	525225
525229	525224
525228	525223
525227	525222
525226	525221
525225	525220
525224	525219
525223	525218
525222	525217
525221	525216
525220	525215
525219	525214
525218	525213
525217	525212
525216	525211
525215	525210
525214	525209
525213	525208
525212	525207
525211	525206
525210	525205
525209	525204
525208	525203
525207	525202
525206	525201
525205	525200
525204	525199
525203	525198
525202	525197
525201	525196
525200	525195
525199	525194
525198	525193
525197	525192
525196	525191
525195	525190
525194	525189
525193	525188
525192	525187
525191	525186
525190	525185
525189	525184
525188	525183
525187	525182
525186	525181
525185	525180
525184	525179
525183	525178
525182	525177
525181	525176
525180	525175
525179	525174
525178	525173
525177	525172
525176	525171
525175	525170
525174	525169
525173	525168
525172	525167
525171	525166
525170	525165
525169	525164
525168	525163
525167	525162
525166	525161
525165	525160
525164	525159
525163	525158
525162	525157
525161	525156
525160	525155
525159	525154
525158	525153
525157	525152
525156	525151
525155	525150
525154	525149
525153	525148
525152	525147
525151	525146
525150	525145
525149	525144
525148	525143
525147	

Hobson Twp. - M.503

Kilmer Twp. - M.519

Heath Twp. - M.495

Pitt Twp. - M.569

THE TOWNSHIP OF  
VALENTINE  
DISTRICT OF COCHRANE  
PORCUPINE MINING DIVISION  
SCALE: 1-INCH = 40 CHAINS

LEGEND

- PATENTED LAND Ⓟ
- CROWN LAND SALE C.S.
- LEASES Ⓛ
- LOCATED LAND Loc.
- LICENSE OF OCCUPATION L.O.
- MINING RIGHTS ONLY M.R.O.
- SURFACE RIGHTS ONLY S.R.O.
- ROADS —
- IMPROVED ROADS —
- KING'S HIGHWAYS —
- RAILWAYS —
- POWER LINES —
- MARSH OR MUSKEG —
- MINES —
- CANCELLED —

NOTES

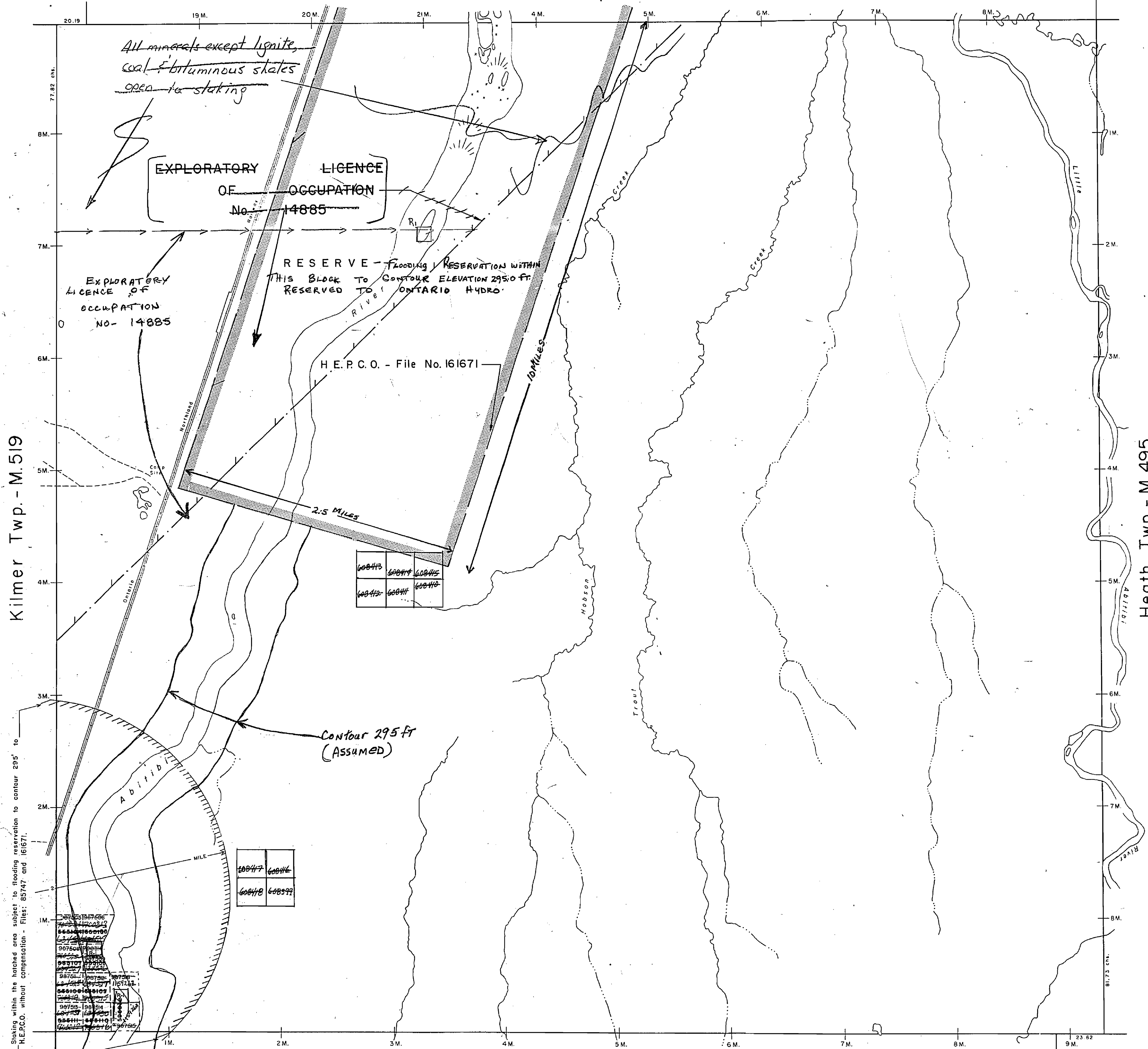
400' Surface Rights Reservation along the shores of all lakes and rivers.  
Staking on bed of Abitibi River subject to Flooding Rights Reservation to H.E.P.C. up to elevations of 230' and 295' along the river - File No. 161671.

R-1 WITHDRAWAL MINING AND SURFACE RIGHTS ORDER - NRW -66/83

THE INFORMATION THAT APPEARS ON THIS MAP HAS BEEN COMPILED FROM VARIOUS SOURCES, AND ACCURACY IS NOT GUARANTEED. THOSE WISHING TO STAKE MINING CLAIMS SHOULD CONSULT WITH THE MINING RECORDER, MINISTRY OF NORTHERN DEVELOPMENT AND MINES, FOR ADDITIONAL INFORMATION ON THE STATUS OF THE LANDS SHOWN HEREON.

Received Jan. 8/82  
PLAN NO. M-609

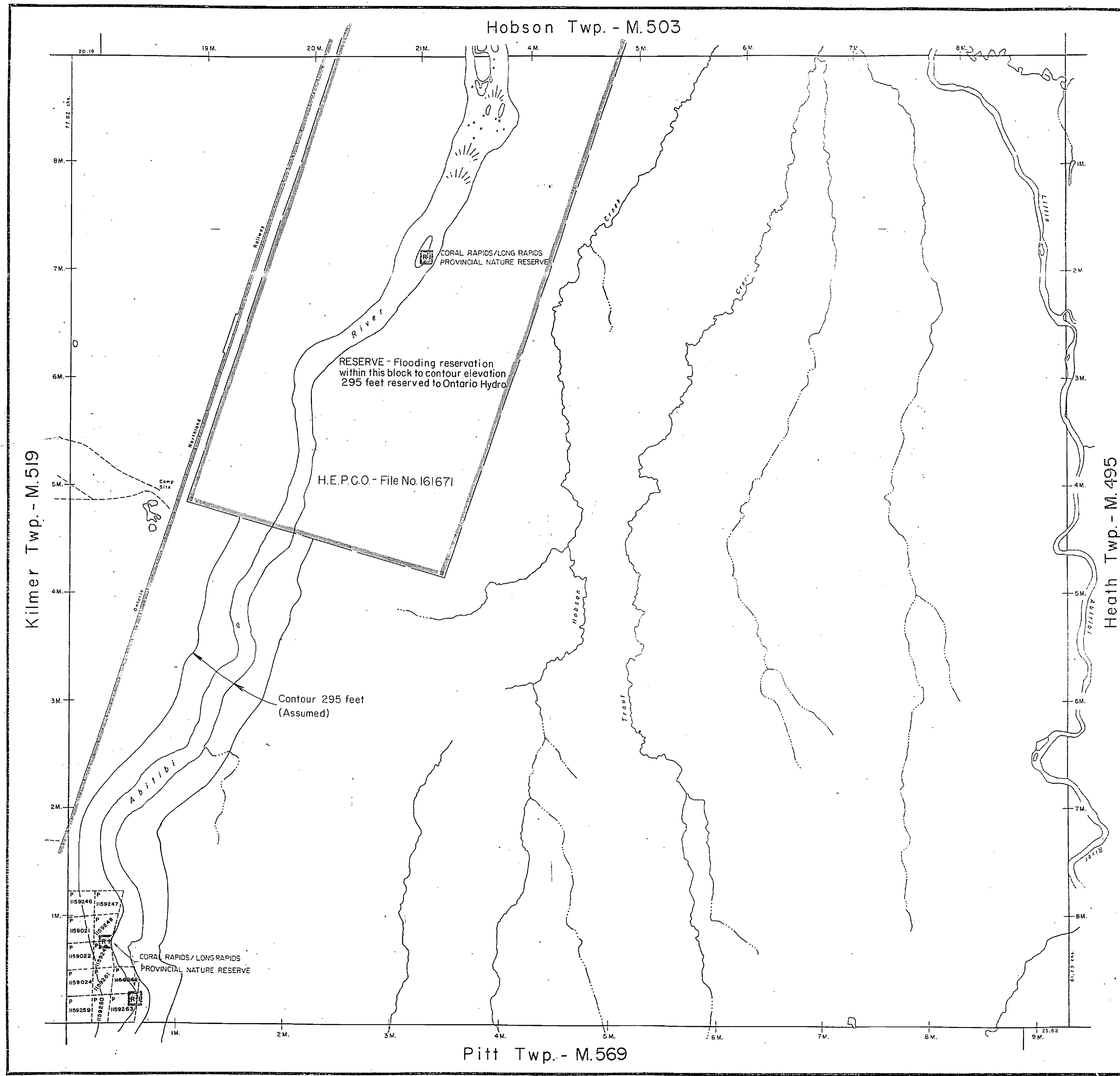
ONTARIO  
MINISTRY OF NATURAL RESOURCES  
SURVEYS AND MAPPING BRANCH



002.M

VALENTINE TWP

002.M



THE TOWNSHIP OF  
**VALENTINE**

DISTRICT OF  
COCHRANE

PORCUPINE  
MINING DIVISION

SCALE: 1-INCH = 40 CHAINS

**LEGEND**

PATENTED LAND	Ⓟ
CROWN LAND SALE	C.S.
LEASES	Ⓞ
LOCATED LAND	Loc.
LICENSE OF OCCUPATION	L.O.
MINING RIGHTS ONLY	M.R.O.
SURFACE RIGHTS ONLY	S.R.O.
ROADS	—
IMPROVED ROADS	—
KING'S HIGHWAYS	—
RAILWAYS	—
POWER LINES	—
MARSH OR MUSKEG	—
MINES	—
CANCELLED	—

**NOTES**

400' Surface Rights Reservation along the shores of all lakes and rivers.

R-1: Mining and Surface Rights withdrawn under Section 36 of the Mining Act R.S.O. 1980, Order No. 66/83, Dated November 18, 1983.

MAP REPLACED AUGUST 18, 1992 BY D.C.

THE INFORMATION THAT APPEARS ON THIS MAP HAS BEEN COMPILED FROM VARIOUS SOURCES, AND ACCURACY IS NOT GUARANTEED. THOSE WISHING TO STAKE MINING CLAIMS SHOULD CONSULT WITH THE MINING RECORDER, MINISTRY OF NORTHERN DEVELOPMENT AND MINES, FOR ADDITIONAL INFORMATION ON THE STATUS OF THE LANDS SHOWN HEREON.

ACTIVATED NOVEMBER 5, 1990 *199*

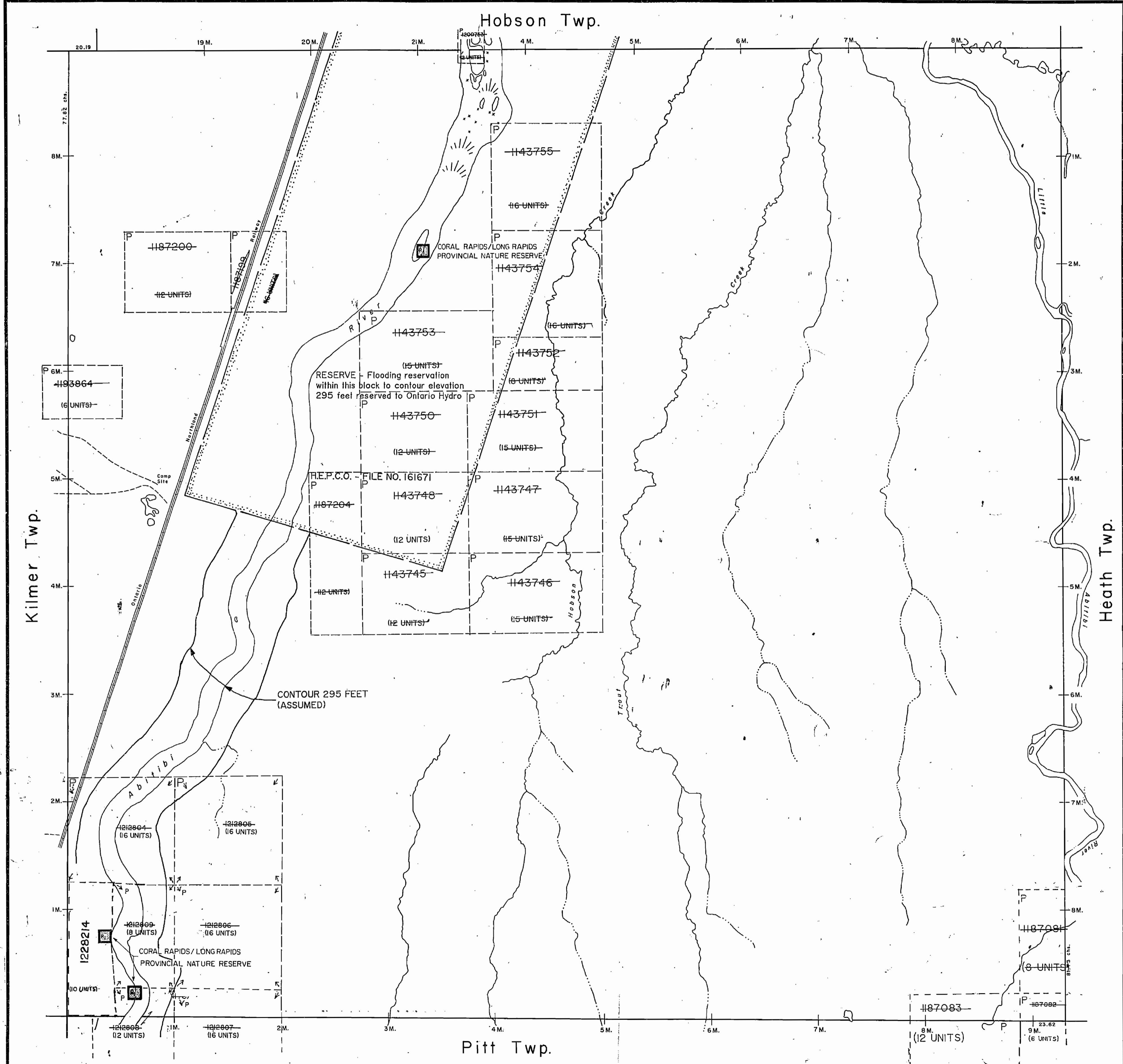
PLAN NO. - **M-609**

DEPARTMENT OF MINES  
- ONTARIO -



DATE OF ISSUE  
MAY 26 1988  
PROVINCIAL RECORDING  
OFFICE - SUDBURY

VALENTINE TWP

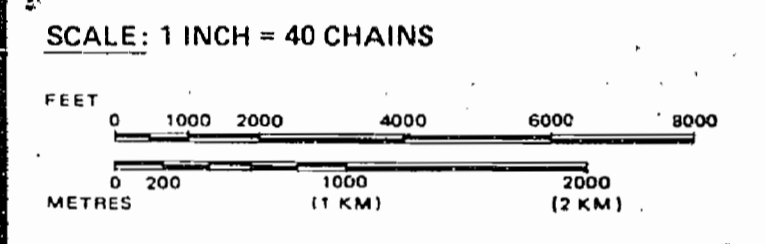


LEGEND

HIGHWAY AND ROUTE No.	
OTHER ROADS	
TRAILS	
SURVEYED LINES:	
TOWNSHIPS, BASE LINES, ETC.	
LOTS, MINING CLAIMS, PARCELS, ETC.	
UNSURVEYED LINES:	
LOT LINES	
PARCEL BOUNDARY	
MINING CLAIMS ETC.	
RAILWAY AND RIGHT OF WAY	
UTILITY LINES	
NON-PERENNIAL STREAM	
FLOODING OR FLOODING RIGHTS	
SUBDIVISION OR COMPOSITE PLAN	
RESERVATIONS	
ORIGINAL SHORELINE	
MARSH OR MUSKEG	
MINES	
TRAVERSE MONUMENT	

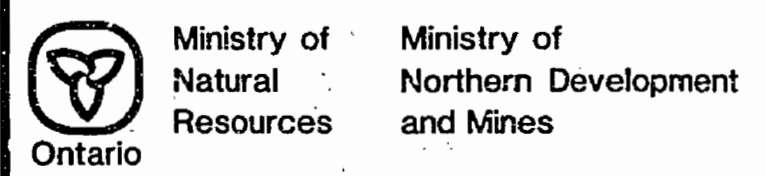
DISPOSITION OF CROWN LANDS

TYPE OF DOCUMENT	SYMBOL
PATENT, SURFACE & MINING RIGHTS	
" SURFACE RIGHTS ONLY	
" MINING RIGHTS ONLY	
LEASE, SURFACE & MINING RIGHTS	
" SURFACE RIGHTS ONLY	
" MINING RIGHTS ONLY	
LICENCE OF OCCUPATION	
ORDER-IN-COUNCIL	
RESERVATION	
CANCELLED	
SAND & GRAVEL	



MINING & SURFACE RIGHTS WITHDRAWN  
R.S.O. 1980, ORDER NO. 66/83  
DATED NOVEMBER 18, 1983.

TOWNSHIP  
**VALENTINE**  
M.N.R. ADMINISTRATIVE DISTRICT  
COCHRANE  
MINING DIVISION  
PORCUPINE  
LAND TITLES / REGISTRY DIVISION  
COCHRANE



Date: \_\_\_\_\_ Number: **G-3582**  
ACTIVATED AUGUST 18, 1992 BY D.C.  
CHECKED BY B.B.

THE INFORMATION THAT APPEARS ON THIS MAP HAS BEEN COMPILED FROM VARIOUS SOURCES, AND ACCURACY IS NOT GUARANTEED. THOSE WISHING TO STAKE MINING CLAIMS SHOULD CONSULT WITH THE MINING RECORDER, MINISTRY OF NORTHERN DEVELOPMENT AND MINES, FOR ADDITIONAL INFORMATION ON THE STATUS OF THE LANDS SHOWN HEREON.



609

# VALENTINE

ONT. DEPT. OF MINES  
MINING LANDS BR.  
THIS MAP FOR CHECKING  
PURPOSES ONLY - MUST  
NOT BE SOLD.

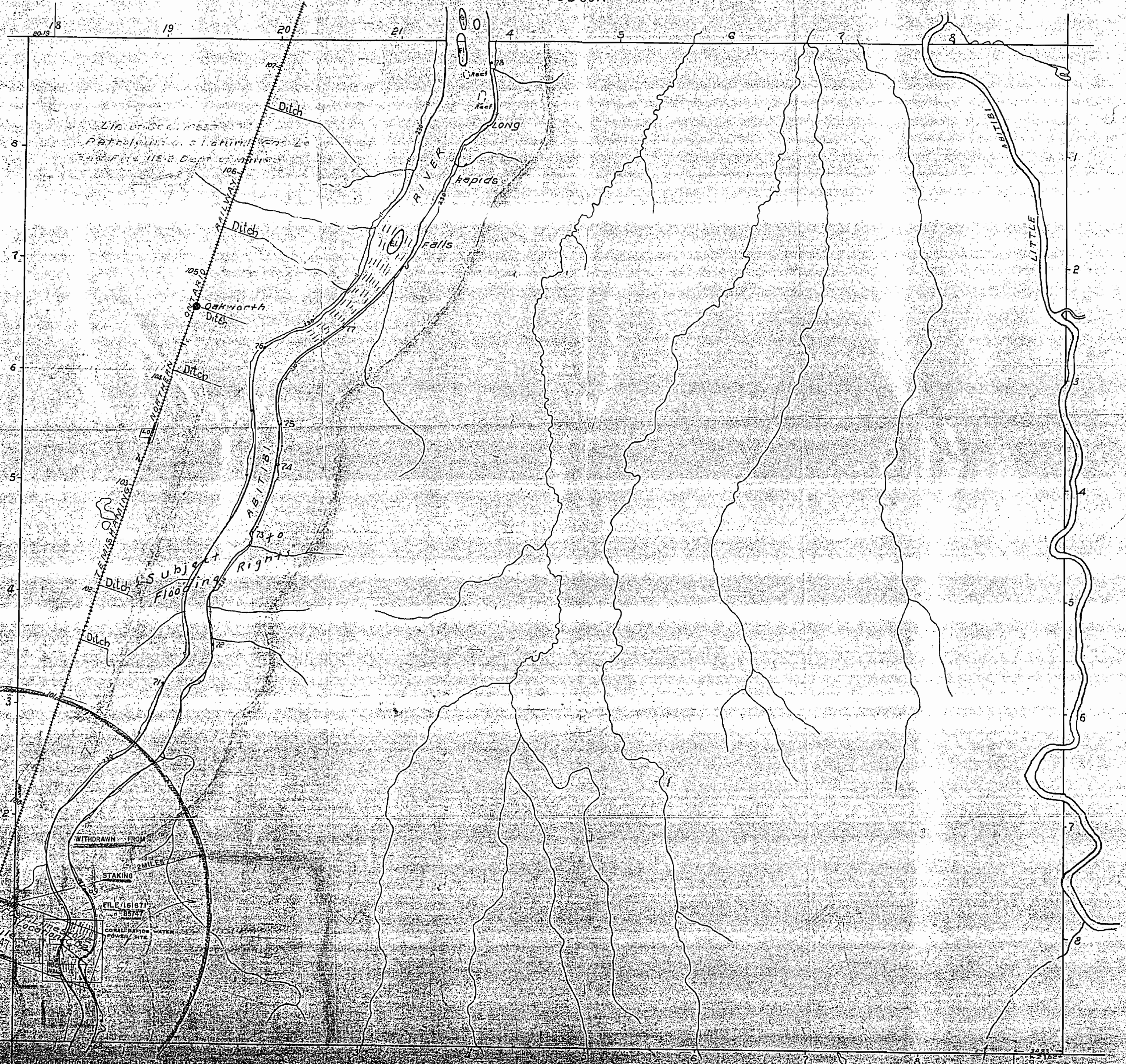
DATE OF ISSUE  
APR. 2 1965  
ONTARIO DEPT. OF MINES

PORCUPINE MINING DIVISION

NOTE  
400' Surface Rights Reservation  
around all Lakes and Rivers.

Scale 40 Chains = 1 inch

HOBSON



000.M

VALENTINE TWP

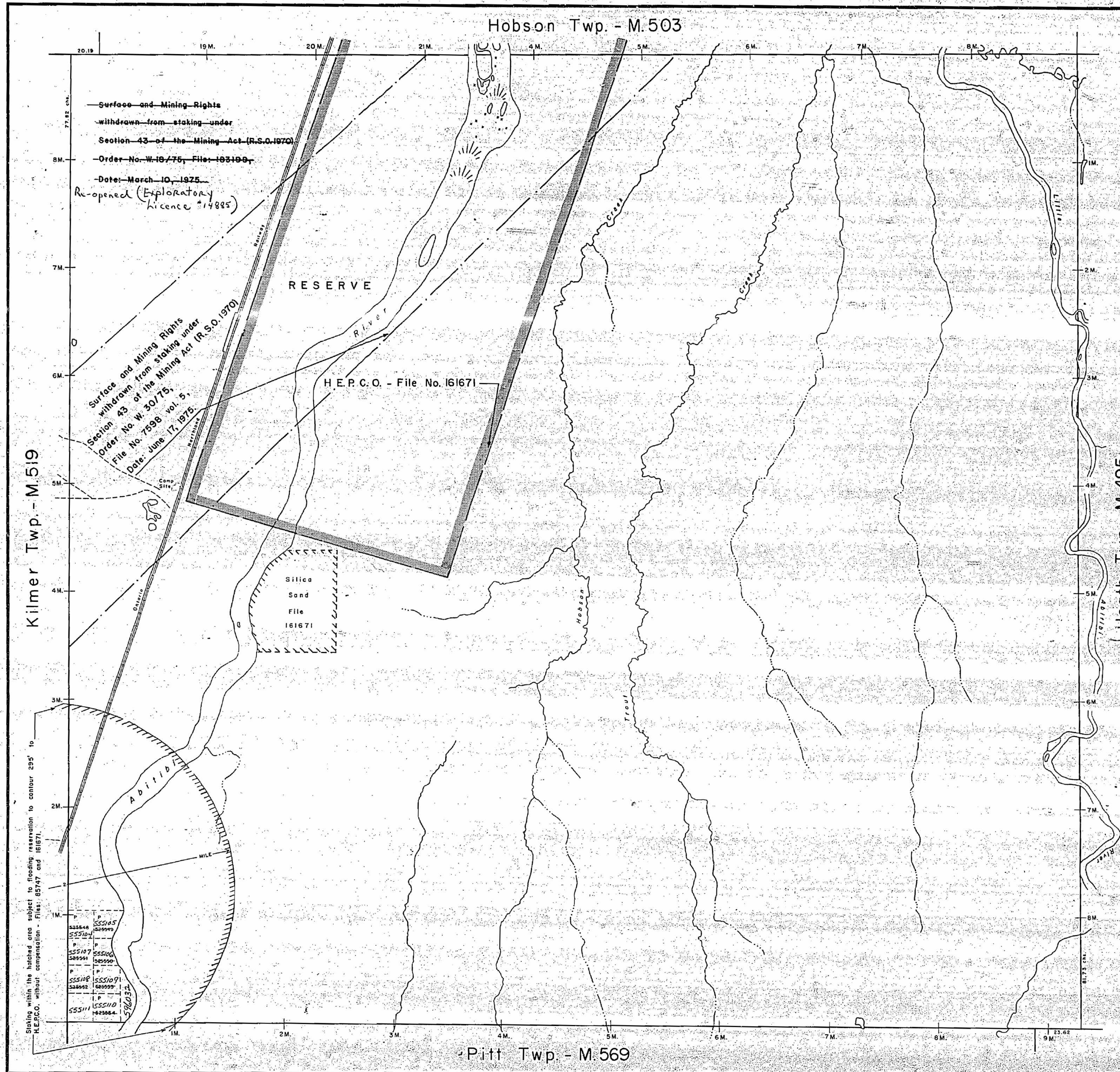
000.M

TRIM LINE

000.M

VALENTINE TWP

000.M



Staking within the hatched area subject to flooding reservation to contour 295' to H.E.P.C.O. without compensation - Files: 65747 and 161671.

Surface and Mining Rights withdrawn from staking under Section 43 of the Mining Act (R.S.O. 1970) Order No. W. 18/75, File: 163188, Date: March 10, 1975 Re-opened (Exploratory licence #14885)

Surface and Mining Rights withdrawn from staking under Section 43 of the Mining Act (R.S.O. 1970) Order No. W. 30/75, File No. 7598 vol. 5, Date: June 17, 1975

555145	P
555146	P
555147	P
555148	P
555149	P
555150	P
555151	P
555152	P
555153	P
555154	P
555155	P
555156	P
555157	P
555158	P
555159	P
555160	P
555161	P
555162	P
555163	P
555164	P

THE TOWNSHIP OF  
**VALENTINE**  
DISTRICT OF COCHRANE  
PORCUPINE MINING DIVISION  
SCALE: 1-INCH = 40 CHAINS

**LEGEND**

PATENTED LAND	⊙
CROWN LAND SALE	C.S.
LEASES	⊙
LOCATED LAND	Loc.
LICENSE OF OCCUPATION	L.O.
MINING RIGHTS ONLY	M.R.O.
SURFACE RIGHTS ONLY	S.R.O.
ROADS	
IMPROVED ROADS	—
KING'S HIGHWAYS	—
RAILWAYS	—
POWER LINES	—
MARSH OR MUSKEG	—
MINES	—
CANCELLED	—

**NOTES**

400' Surface Rights Reservation along the shores of all lakes and rivers.

Staking on bed of Abitibi River subject to Flooding Rights Reservation to H.E.P.C. up to elevations of 230' and 295' along the river - File No. 161671.

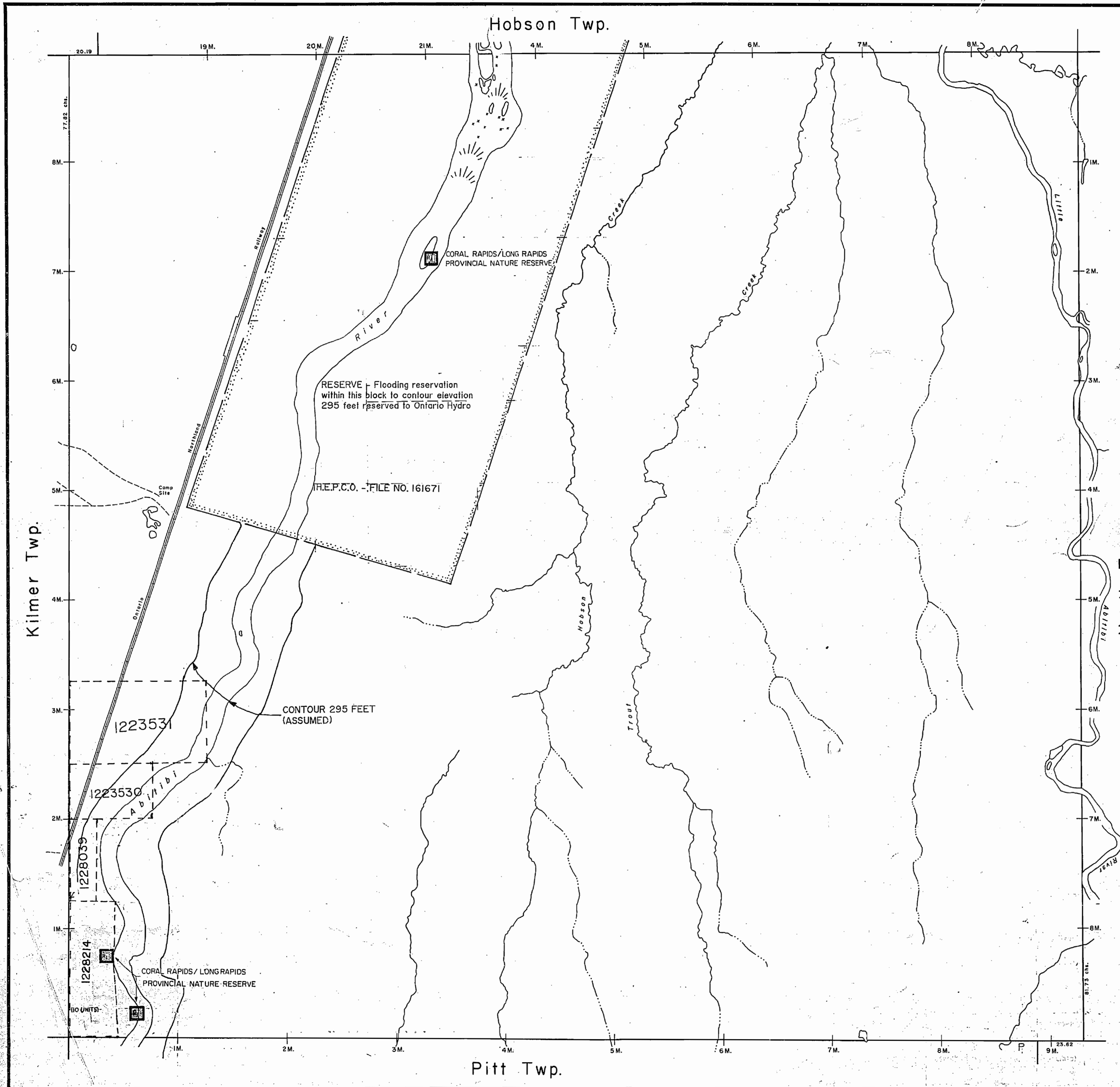
MICROFILM  
01 JAN 1984

PLAN NO. **M-609**

ONTARIO  
MINISTRY OF NATURAL RESOURCES  
SURVEYS AND MAPPING BRANCH

TRIM LINE

THE INFORMATION THAT APPEARS ON THIS MAP HAS BEEN COMPILED FROM VARIOUS SOURCES AND ACCURACY IS NOT GUARANTEED. THOSE WISHING TO STAKE MINING CLAIMS SHOULD CONSULT WITH THE MINING RECORDER, MINISTRY OF NORTHERN DEVELOPMENT AND MINES, FOR ADDITIONAL INFORMATION ON THE STATUS OF THE LANDS SHOWN HEREON.



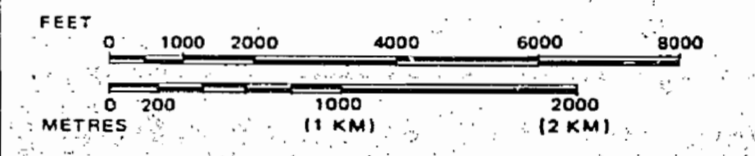
LEGEND

- HIGHWAY AND ROUTE No.
- OTHER ROADS
- TRAILS
- SURVEYED LINES:
  - TOWNSHIPS, BASE LINES, ETC.
  - LOTS, MINING CLAIMS, PARCELS, ETC.
- UNSURVEYED LINES:
  - LOT LINES
  - PARCEL BOUNDARY
  - MINING CLAIMS ETC.
- RAILWAY AND RIGHT OF WAY
- UTILITY LINES
- NON-PERENNIAL STREAM
- FLOODING OR FLOODING RIGHTS
- SUBDIVISION, OR COMPOSITE PLAN
- RESERVATIONS
- ORIGINAL SHORELINE
- MARSH OR MUSKEG
- MINES
- TRAVERSE MONUMENT

DISPOSITION OF CROWN LANDS

TYPE OF DOCUMENT	SYMBOL
PATENT, SURFACE & MINING RIGHTS	●
" SURFACE RIGHTS ONLY	○
" MINING RIGHTS ONLY	◐
LEASE, SURFACE & MINING RIGHTS	◑
" SURFACE RIGHTS ONLY	◒
" MINING RIGHTS ONLY	◓
LICENCE OF OCCUPATION	OC
ORDER-IN-COUNCIL	OC
RESERVATION	○
CANCELLED	○
SAND & GRAVEL	○

SCALE: 1 INCH = 40 CHAINS



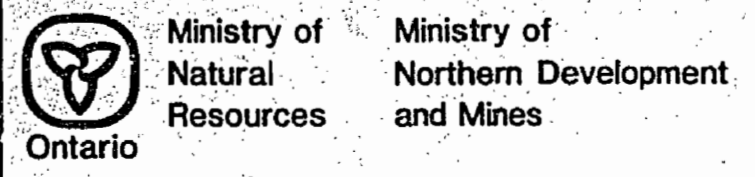
MINING & SURFACE RIGHTS WITHDRAWN  
 R.S.O. 1980, ORDER NO. 66/83  
 DATED NOVEMBER 18, 1983.

TOWNSHIP  
**VALENTINE**

M.N.R. ADMINISTRATIVE DISTRICT  
 COCHRANE

MINING DIVISION  
 PORCUPINE

LAND TITLES / REGISTRY DIVISION  
 COCHRANE



Date: ACTIVATED AUGUST 16, 1992 BY D.C.  
 Number: **G-3582**  
 CHECKED BY S.B.

609

# VALENTINE

m609

PORCUPINE MINING DIVISION

Scale 40 Chains = 1 inch

HOBSON



002M

002M

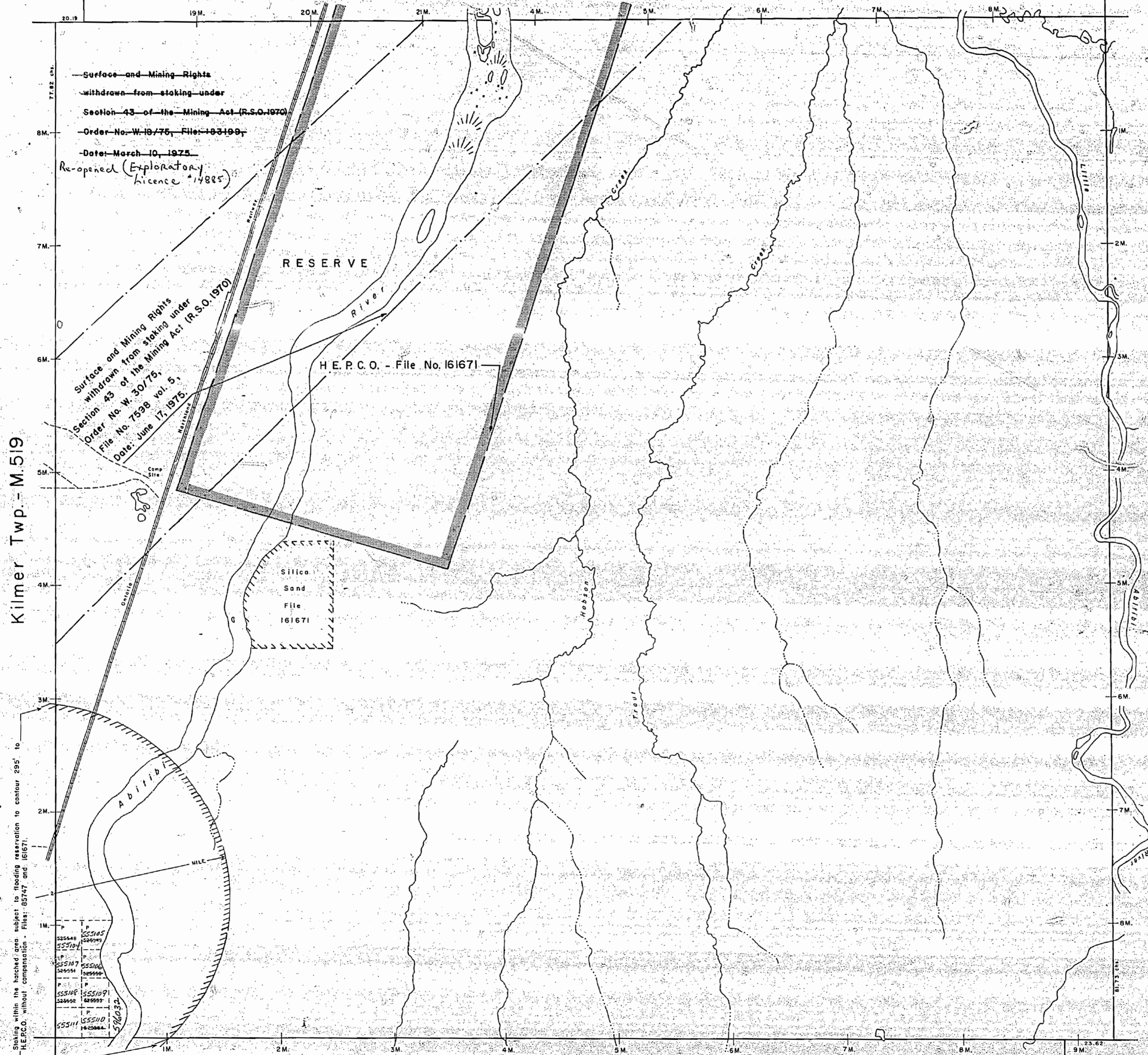
VALENTINE TWP

VALENTINE TWP

002M

002M

Hobson Twp - M.503



Surface and Mining Rights  
 withdrawn from staking under  
 Section 43 of the Mining Act (R.S.O. 1970)  
 Order No. W-10/75, File: 103199,  
 Date: March 10, 1975  
 Re-opened (Exploratory  
 licence #14885)

Surface and Mining Rights  
 withdrawn from staking under  
 Section 43 of the Mining Act (R.S.O. 1970)  
 Order No. W-30/75,  
 File No. 7598 Vol. 5,  
 Date: June 17, 1975

Kilmer Twp - M.519

Heath Twp - M.495

Pitt Twp - M.569

Staking within the hatched area subject to flooding reservation to contour 295' to  
 H.E.P.C.O. without compensation - Files: 85747 and 161671.

552548	555145
552704	555146
552860	555147
553016	555148
553172	555149
553328	555150
553484	555151
553640	555152
553796	555153
553952	555154
554108	555155
554264	555156
554420	555157
554576	555158
554732	555159
554888	555160
555044	555161
555200	555162
555356	555163
555512	555164
555668	555165
555824	555166
555980	555167
556136	555168
556292	555169
556448	555170
556604	555171
556760	555172
556916	555173
557072	555174
557228	555175
557384	555176
557540	555177
557696	555178
557852	555179
558008	555180
558164	555181
558320	555182
558476	555183
558632	555184
558788	555185
558944	555186
559100	555187
559256	555188
559412	555189
559568	555190
559724	555191
559880	555192
560036	555193
560192	555194
560348	555195
560504	555196
560660	555197
560816	555198
560972	555199
561128	555200

THE TOWNSHIP OF  
**VALENTINE**  
 DISTRICT OF COCHRANE  
 PORCUPINE MINING DIVISION  
 SCALE: 1-INCH = 40 CHAINS

**LEGEND**

PATENTED LAND	Ⓟ
CROWN LAND SALE	C.S.
LEASES	Ⓞ
LOCATED LAND	Loc.
LICENSE OF OCCUPATION	L.O.
MINING RIGHTS ONLY	M.R.O.
SURFACE RIGHTS ONLY	S.R.O.
ROADS	—
IMPROVED ROADS	—
KING'S HIGHWAYS	—
RAILWAYS	—
POWER LINES	—
MARSH OR MUSKEG	—
MINES CANCELLED	—

**NOTES**

400' Surface Rights Reservation along the shores of all lakes and rivers.

Staking on bed of Abitibi River subject to Flooding Rights Reservation to H.E.P.C. up to elevations of 230' and 295' along the river - File No. 161671.

MICROFILM  
 01 JAN 1984

Raw F.L. 11180  
**PLAN NO. M-609**  
 ONTARIO  
 MINISTRY OF NATURAL RESOURCES  
 SURVEYS AND MAPPING BRANCH

609

# VALENTINE

ONT. DEPT. OF MINES  
MINING LANDS BR.  
THIS MAP FOR CHECKING  
PURPOSES ONLY - MUST  
NOT BE SOLD.

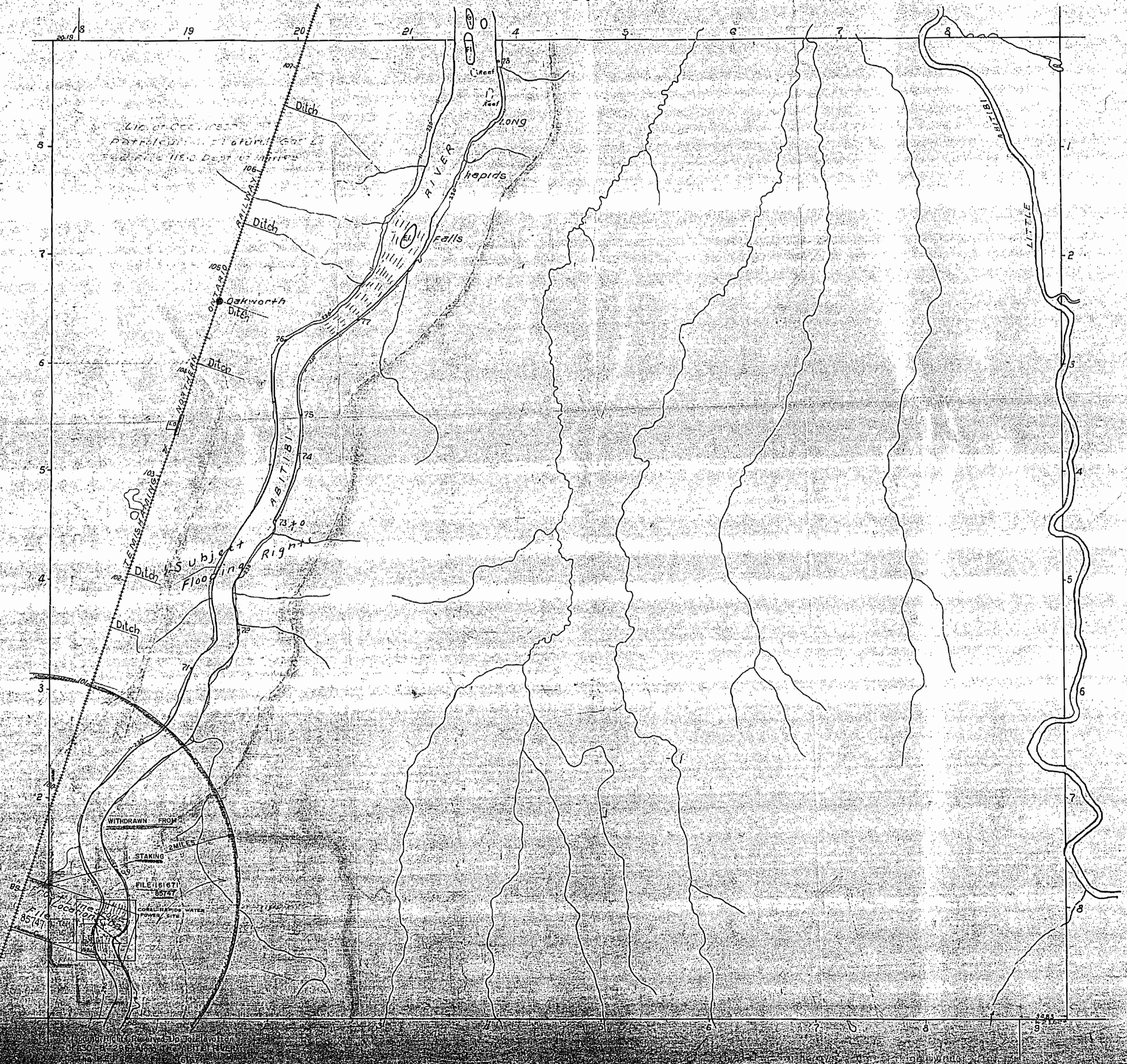
DATE OF ISSUE  
APR. 2 1965  
ONTARIO DEPT. OF MINES

PORCUPINE MINING DIVISION

NOTE  
400' Surface Rights Reservation  
around all Lakes and Rivers.

Scale 40 Chains = 1 inch

HOBSON



609

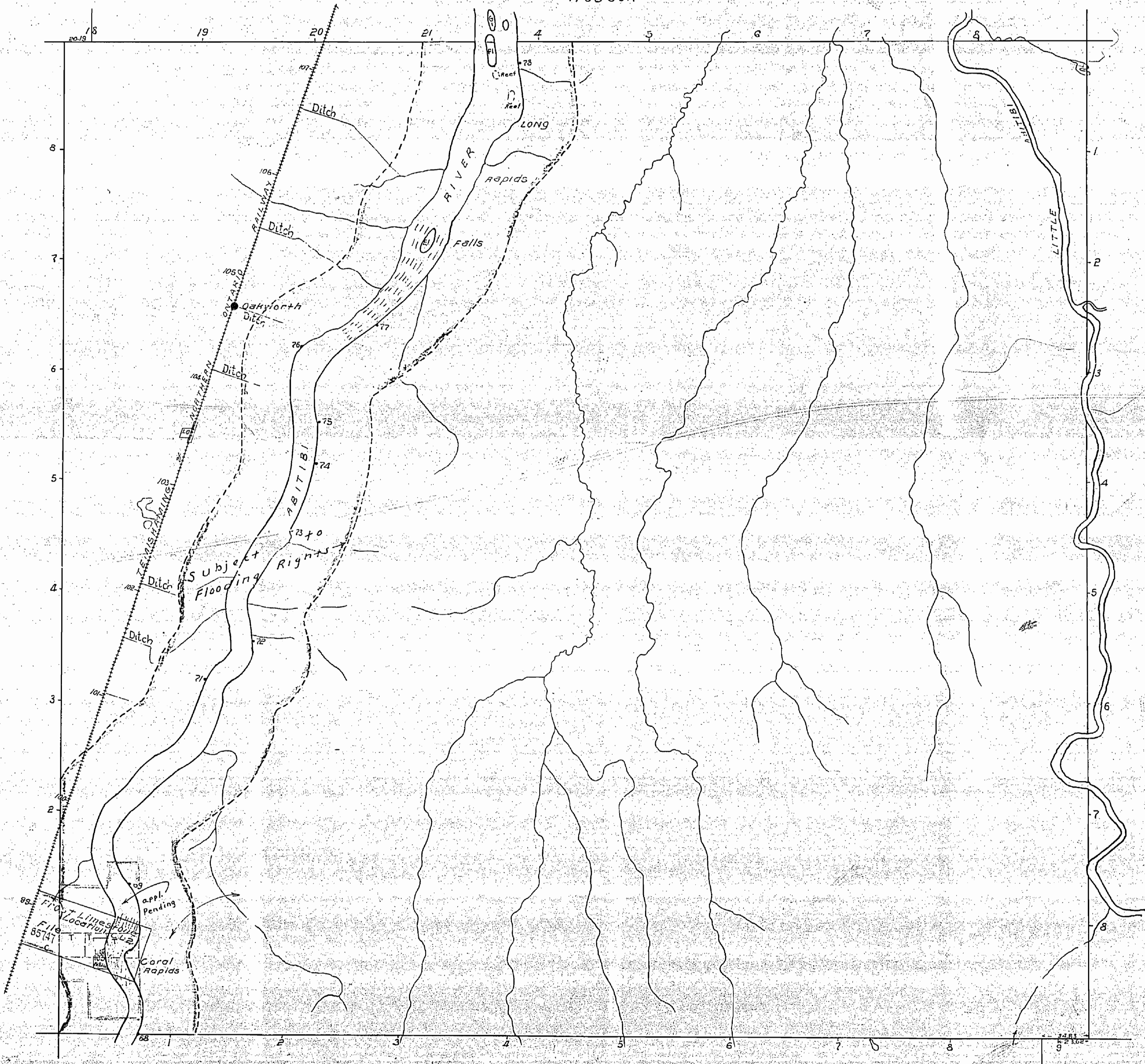
# VALENTINE

m609

PORCUPINE MINING DIVISION

Scale 40 Chains = 1 inch

HOBSON



609

Hobson Twp. - M.503

THE TOWNSHIP OF  
OF  
**VALENTINE**  
DISTRICT OF COCHRANE  
PORCUPINE MINING DIVISION  
SCALE: 1-INCH = 40 CHAINS

LEGEND

PATENTED LAND	⊕
CROWN LAND SALE	C.S.
LEASES	⊙
LOCATED LAND	L.C.
LICENSE OF OCCUPATION	L.O.
MINING RIGHTS ONLY	M.R.O.
SURFACE RIGHTS ONLY	S.R.O.
ROADS	—
IMPROVED ROADS	—
KING'S HIGHWAYS	—
RAILWAYS	—
POWER LINES	—
MARSH OR MUSKEG	—
MINES	—
CANCELLED	—

NOTES

400' Surface Rights Reservation along the shores of all lakes and rivers.  
Staking on bed of Abitibi River, subject to Flooding Rights Reservation to H.E.P.C.O. up to elevations of 230' and 295' along the river - File No. 161671.

*Whole TOWNSHIP WITHDRAWN FROM STAKING UNDER SEC. 43 LETTER MARCH 24/70 FILE 19*

④3 MAR 10/75 SR. e. Mc. 111111

RECEIVED  
JAN 14 1970  
AM 7:09 10:11 12:12 3:45 6:58 PM

PLAN NO: M-609

DEPARTMENT OF MINES - ONTARIO -

Exploratory License of Occupation  
No. 14510 (Gas & Oil Only)

RESERVE 10

H.E.P.C.O. - File No. 161671

*Station 43 - June 17/75  
Cretaceous*

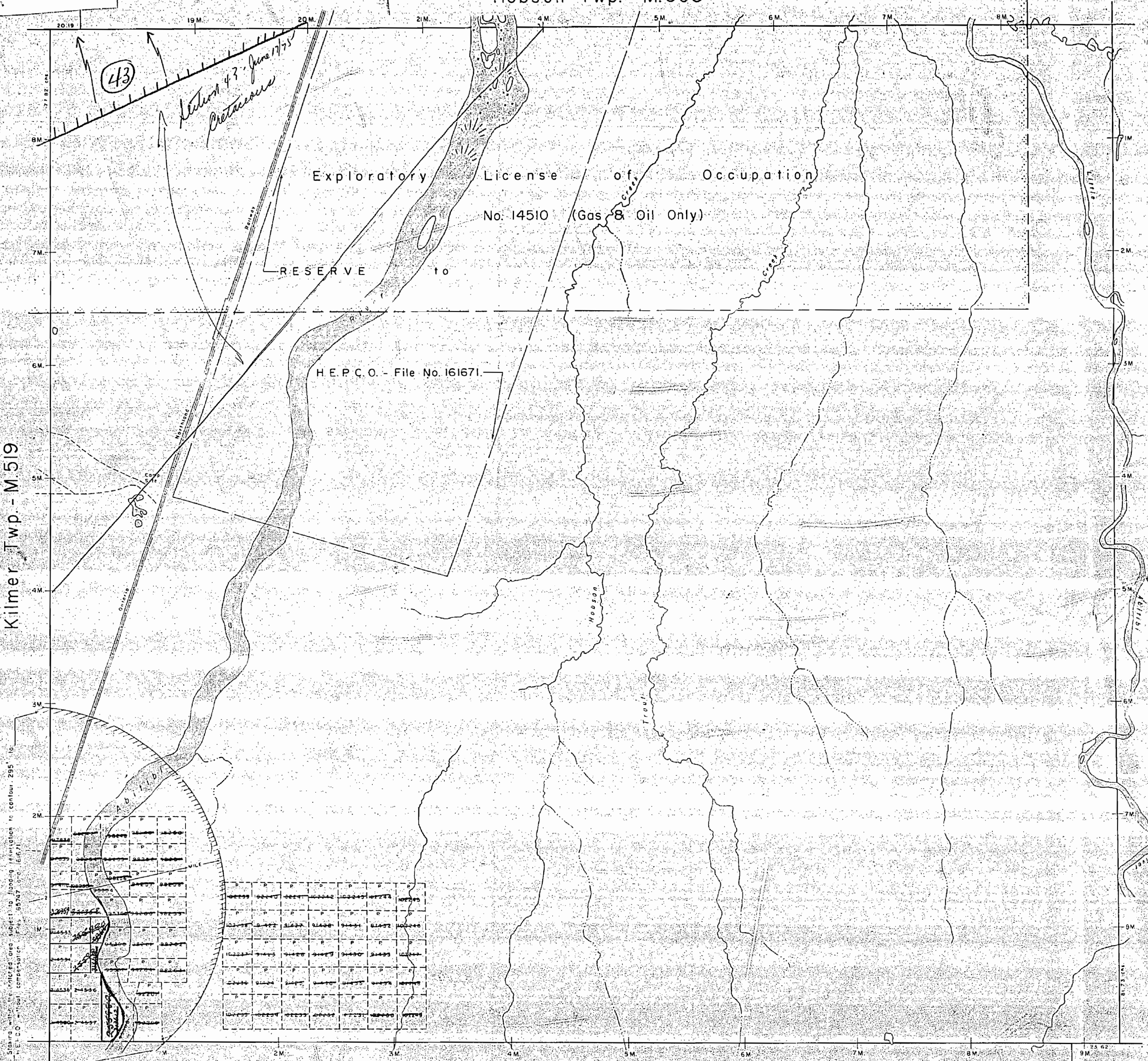
④3

Kilmer Twp. - M.519

Heath Twp. - M.495

Pitt Twp. - M.569

Staking within the indicated area subject to flooding reservation to contour 295' to H.E.P.C.O. - File No. 161671





609

Hobson Twp. - M.503

THE TOWNSHIP OF

VALENTINE

DISTRICT OF COCHRANE

PORCUPINE MINING DIVISION

SCALE: 1-INCH = 40 CHAINS

LEGEND

PATENTED LAND	Ⓟ
CROWN LAND SALE	C.S.
LEASES	Ⓞ
LOCATED LAND	Loc.
LICENSE OF OCCUPATION	L.O.
MINING RIGHTS ONLY	M.R.O.
SURFACE RIGHTS ONLY	S.R.O.
ROADS	—
IMPROVED ROADS	—
KING'S HIGHWAYS	—
RAILWAYS	—
POWER LINES	—
MARSH OR MUSKEG	—
MINES	—
CANCELLED	—

NOTES

400' Surface Rights Reservation along the shores of all lakes and rivers.

Staking on bed of Abitibi River subject to Flooding Rights Reservation to H.E.P.C. up to elevations of 230' and 295' along the river. - File No. 161671.

DATE OF ISSUE  
JUL 15 1975

RECEIVED  
JUL 22 1975  
7 18 9 10 11 12 1 2 3 4 15 16

PLAN NO. - M - 609

ONTARIO  
MINISTRY OF NATURAL RESOURCES  
SURVEYS AND MAPPING BRANCH

Kilmer Twp. - M.519

Heath Twp. - M.495

Pitt Twp. - M.569

Surface and Mining Rights  
withdrawn from staking under  
Section 43 of the Mining Act (R.S.O.1970)  
Order No. W.18/75, File: 7598 v.5,  
Date: March 10, 1975.

Surface and Mining Rights  
withdrawn from staking under  
Section 43 of the Mining Act (R.S.O.1970)  
Order No. W.30/75,  
File No. 7598 vol.5,  
Date: June 17, 1975.

Exploratory License of Occupation  
No. 14510 (Gas & Oil Only)

RESERVE

H.E.P.C.O. - File No. 161671

THIS TOWNSHIP COVERED BY

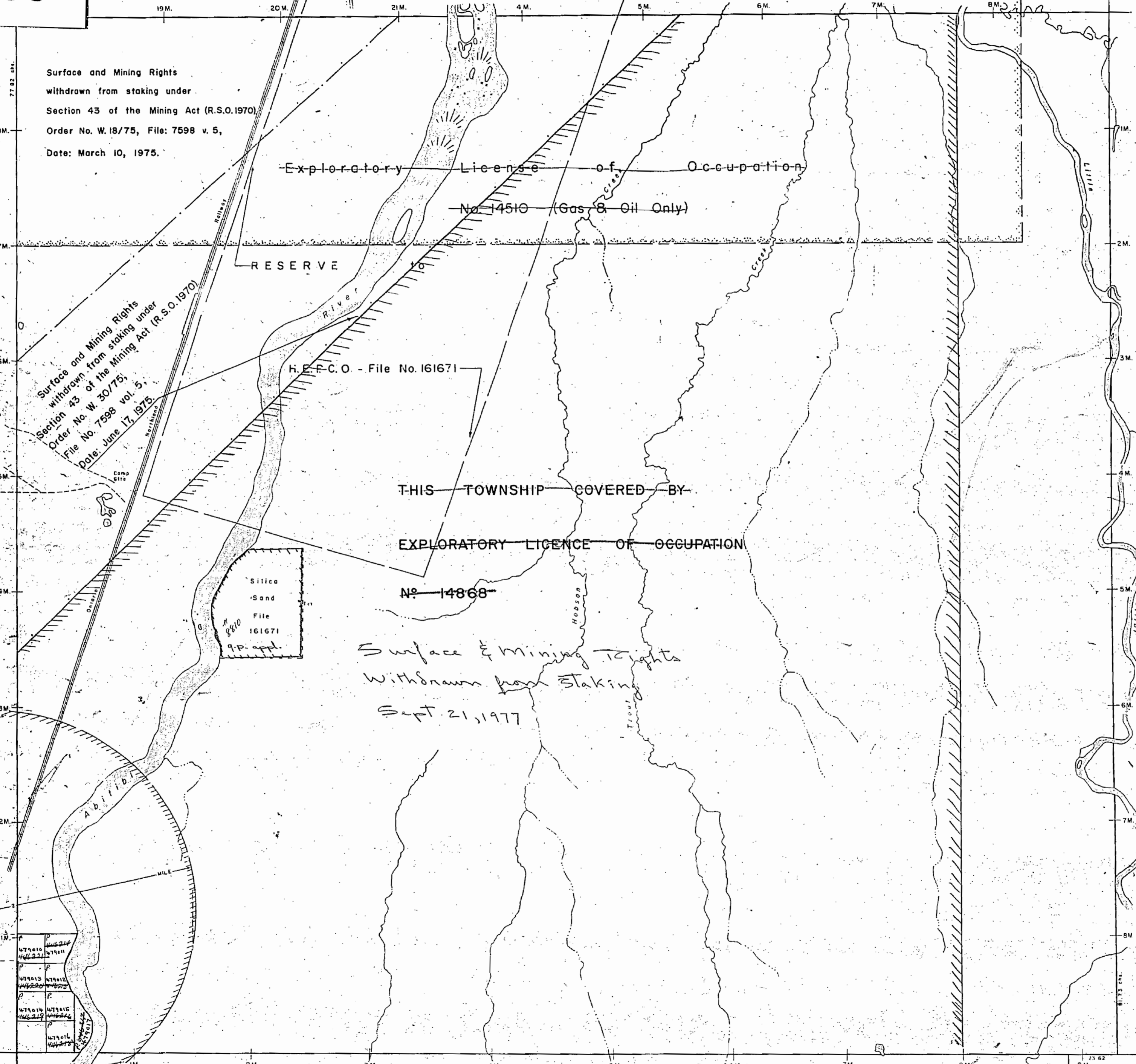
EXPLORATORY LICENCE OF OCCUPATION

No. 14868

Surface & Mining Rights  
Withdrawn from Staking  
Sept. 21, 1977

Silica  
Sand  
File  
161671  
q.p. appl.

Staking within the notched area subject to flooding reservation to contour 295' to H.E.P.C.O. without compensation. - Files: 83747 and 161671.



609

low down De

# VALENTINE

PORCUPINE MINING DIVISION

DATE OF ISSUE

DEC 18 1961

ONTARIO DEPT. OF MINES

ONT. DEPT. OF MINES  
MINING LANDS BR.  
THIS MAP FOR CHECKING  
PURPOSES ONLY - MUST  
NOT BE SOLD.

Scale 40 Chains = 1 inch

HOBSON



L.C. of 1855  
Petroleum and Natural Gas  
335 File No. 2 Dept. of Mines

EXPLORATORY

LICENSE

OF

OCCUPATION

No. 13,304

FILE No. 126125

89- F.P. 1/1  
Localities  
85747

CORAL RAPIDS WATER  
POWER SITE

This Twp. withdrawn from staking under Ont.  
Regulation 9/59 dated Jan. 28, 1959.