

HAVILAND TWP.

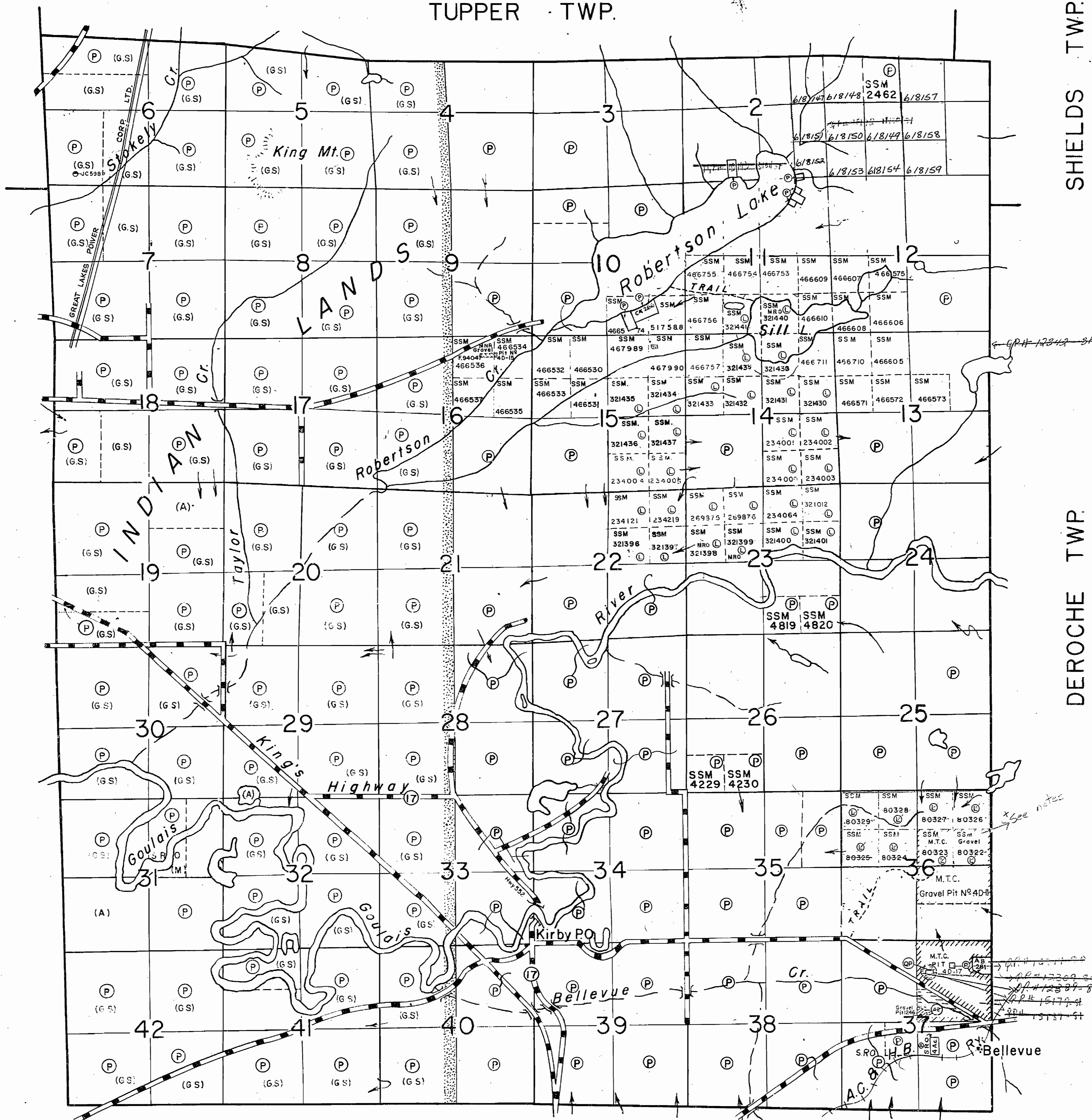
TUPPER TWP.

SHIELDS TWP.

FENWICK TWP.

DEROCHE TWP.

AWERES TWP.



THE TOWNSHIP
OF **G.3058**
VANKOUGHNET

DISTRICT OF
ALGOMA
SAULT STE. MARIE
MINING DIVISION
SCALE: 1-INCH=40 CHAINS

LEGEND

- PATENTED LAND P
- CROWN LAND SALE C.S.
- LOCATED LAND Loc.
- LICENSE OF OCCUPATION L.O.
- ROADS ————
- IMPROVED ROADS ————
- RAILWAYS ————
- POWER LINES ————
- MARSH OR MUSKEG ————
- PATENTED for S.R.O.

NOTES

- (A) - Surface & Mining Rights controlled by the Crown (Canada).
 - (G.S.) - Gold & Silver only controlled by the Crown (Canada).
 - (M) - All Mining Rights controlled by the Crown (Canada).
- Enquiries regarding (A), (G.S.) & (M), should be directed to the Chief, Reserves & Trusts, Indian Affairs Branch, Dept. of Citizenship & Immigration, Ottawa.

S.R.O. - Surface Rights Only.
M.R.O. - Mining Rights Only.

Areas withdrawn from staking under Section 42 of the Mining Act.

File	Date	Dispositio
163004	Mar:1/71	S.R.O.

Reopened - April 5/82 - ORDER 0.1/82

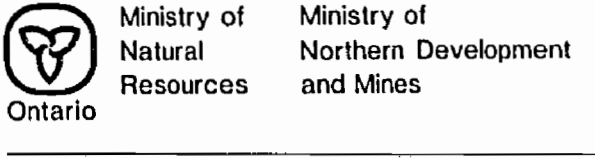
400' surface rights reservation around all lakes & rivers.

OP QUARRY PERMIT
MINING & SURFACE RIGHTS OF
NOTE: Mining claims SSM 80322, 80323, 80326, 80327, 80324, 80325, 80328 and 80329 OPEN FOR PROSPECTING, STAKING OUT, SALE OR LEASE AT 7:00 P.M. ON OCT 6/80 - ONT. GAZETTE DATED SEPT. 20/80.

APR 20 1980

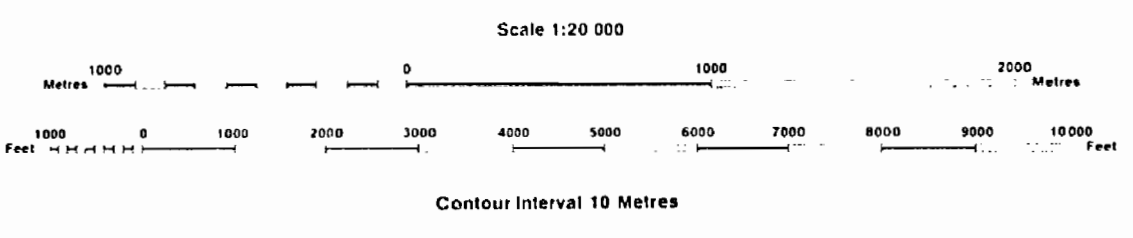
PLAN NO.- M-1365

ONTARIO
MINISTRY OF NATURAL RESOURCES
SURVEYS AND MAPPING BRANCH



INDEX TO LAND DISPOSITION

PLAN G-3058 TOWNSHIP VAN KOUGHNET M.N.R. ADMINISTRATIVE DISTRICT SAULT STE. MARIE MINING DIVISION SAULT STE. MARIE LAND TITLES/REGISTRY DIVISION ALGOMA



Map base and land disposition drafting by Surveys and Mapping Branch, Ministry of Natural Resources.

The disposition of land, location of lot fabric and parcel boundaries on this index was compiled for administrative purposes only.

SYMBOLS

- Boundary Township, Meridian, Baseline... Road allowance, surveyed, shoreline... Lot/Concession, surveyed, unsurveyed... Parcel, surveyed, unsurveyed... Right-of-way, road, railway, utility... Reservation... Cliff, Pit, Pile... Contour Interpolated, Approximate, Depression... Control point (horizontal)... Flooded land... Mine head frame... Pipeline (above ground)... Railway; single track, double track, abandoned... Road, highway, county, township access, trail, bush... Shoreline (original)... Transmission line... Wooded area...

DISPOSITION OF CROWN LANDS

- Patent Surface & Mining Rights, Surface Rights Only, Mining Rights Only... Lease Surface & Mining Rights, Surface Rights Only, Mining Rights Only... Licence of Occupation... Order-in-Council... Cancelled... Reservation... Sand & Gravel

AREAS WITHDRAWN FROM DISPOSITION

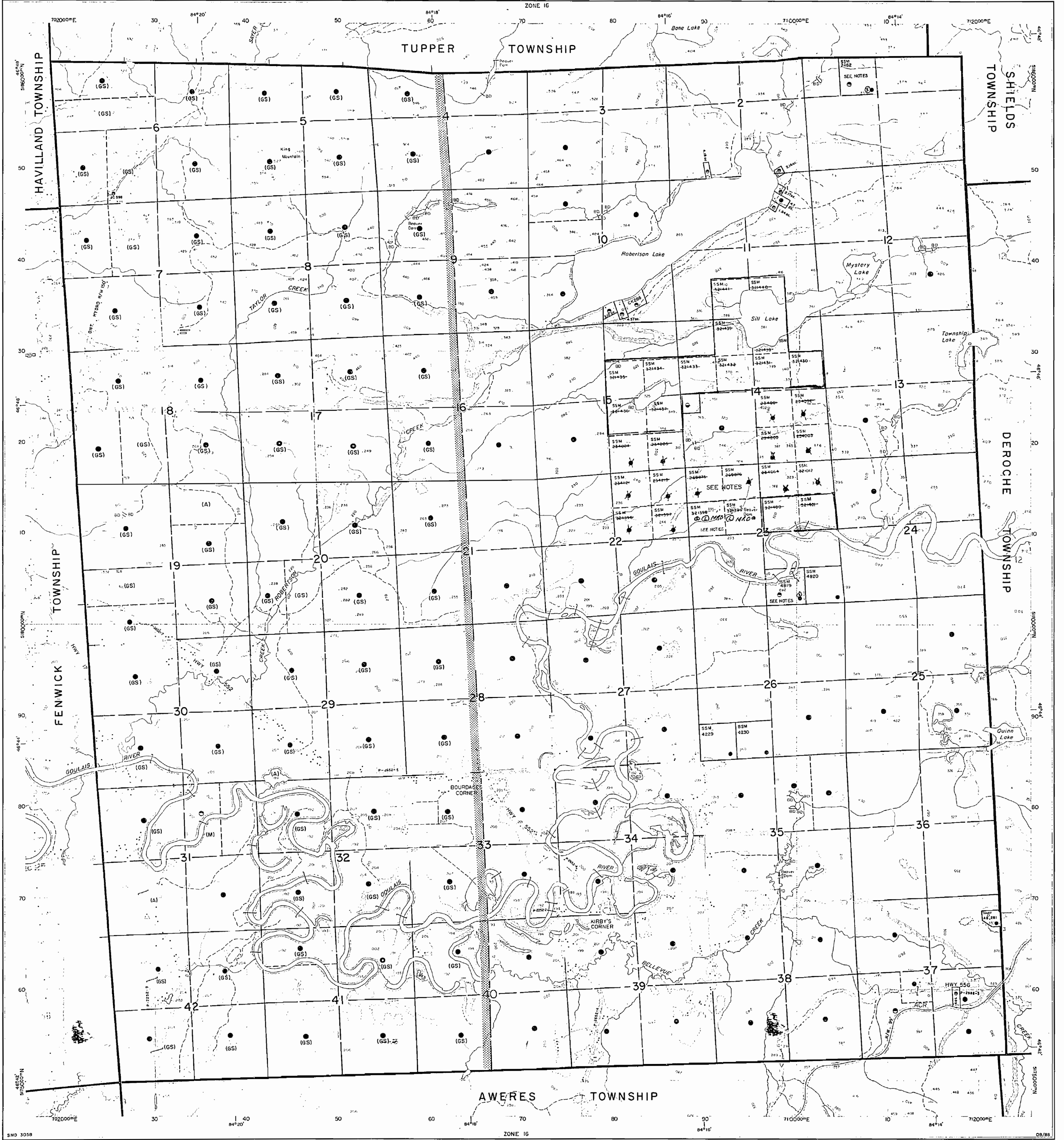
- MRO - Mining Rights Only, SRO - Surface Rights Only, M+S - Mining and Surface Rights... MINING AND SURFACE RIGHTS OPEN FOR PROSPECTING, STAKING OUT, SALE OR LEASE AT 7:00 AM JUNE 1, 1995... MINING AND SURFACE RIGHTS OPEN FOR PROSPECTING, STAKING OUT, SALE OR LEASE AT 7:00 AM STANDARD TIME JUNE 1994... MINING RIGHTS (SEE ONTARIO GAZETTE MAY 14/94 MAT 14/94) - OPEN FOR PROSPECTING, STAKING OUT, SALE OR LEASE AT 7:00 AM STANDARD TIME JUNE 1994

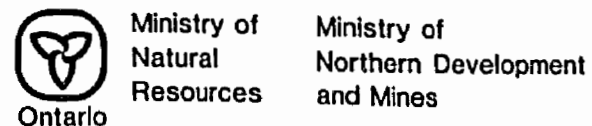
DATE OF ISSUE JUL 5 1995 SAULT STE. MARIE MINING DIVISION

THE INFORMATION THAT APPEARS ON THIS MAP HAS BEEN COMPILED FROM VARIOUS SOURCES AND ACCURACY IS NOT GUARANTEED. THOSE WISHING TO STAKE MINING CLAIMS SHOULD CONSULT WITH THE MINING RECORDER, MINISTRY OF NORTHERN DEVELOPMENT AND MINES. FOR ADDITIONAL INFORMATION ON THE STATUS OF THE LANDS SHOWN HEREON.

NOTES (A) SURFACE & MINING RIGHTS CONTROLLED BY THE CROWN (CANADA) (GS) GOLD & SILVER RIGHTS ONLY CONTROLLED BY THE CROWN (CANADA) (M) ALL MINING RIGHTS CONTROLLED BY THE CROWN (CANADA). ENQUIRIES REGARDING (A), (GS) & (M) SHOULD BE DIRECTED TO THE DIRECTOR OF LANDS, REVENUES AND TRUSTS, ONTARIO REGION DEPARTMENT OF INDIAN AND NORTHERN AFFAIRS.

EASTERN BOUNDARY OF INDIAN LANDS SHOWN THUS



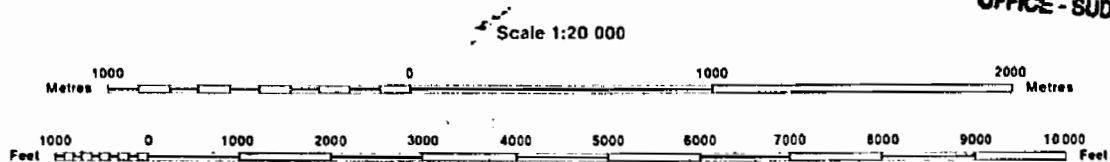


INDEX TO LAND DISPOSITION

PLAN G-3058 TOWNSHIP VAN KOUGHNET M.N.R. ADMINISTRATIVE DISTRICT SAULT STE. MARIE MINING DIVISION SAULT STE. MARIE LAND TITLES/REGISTRY DIVISION ALGOMA

DATE OF ISSUE OCT 07 1997

PROVINCIAL RECORDING OFFICE - SUDBURY



Contour Interval 10 Metres

Map base and land disposition drafting by Surveys and Mapping Branch, Ministry of Natural Resources.

The disposition of land, location of lot fabric and parcel boundaries on this index was compiled for administrative purposes only.

SYMBOLS

Table of symbols for Boundary, Road allowance, Lot/Concession, Right-of-way, Reservation, Contour, Interpolated, Depression, Control point, Flooded land, Mine head frame, Pipeline, Railway, Road, Shoreline, Transmission line, Wooded area.

DISPOSITION OF CROWN LANDS

Table of symbols for Patent, Lease, Order-in-Council, Cancelled, Reservation, Sand & Gravel.

AREAS WITHDRAWN FROM DISPOSITION

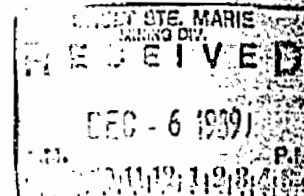
Table defining MRO, SRO, and M+S symbols and their corresponding descriptions.

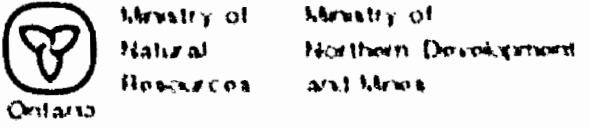
NOTES

- (A) SURFACE & MINING RIGHTS CONTROLLED BY THE CROWN (CANADA)
(G.S) GOLD & SILVER ONLY CONTROLLED BY THE CROWN (CANADA)
(M) ALL MINING RIGHTS CONTROLLED BY THE CROWN (CANADA)

THE INFORMATION THAT APPEARS ON THIS MAP HAS BEEN COMPILED FROM VARIOUS SOURCES AND ACCURACY IS NOT GUARANTEED...

The 1985 Magnetic Bearing Approx. 62.14 Annual Change 12.6 increasing





INDEX TO LAND DISPOSITION

PLAN
G-3058
TOWNSHIP

VAN KOUGHNET

M. & A. ADMINISTRATIVE DISTRICT
SAULT STE MARIE
MINING DIVISION
SAULT STE MARIE
LAND TITLES / REGISTRY DIVISION
ALGOMA

SYMBOLS

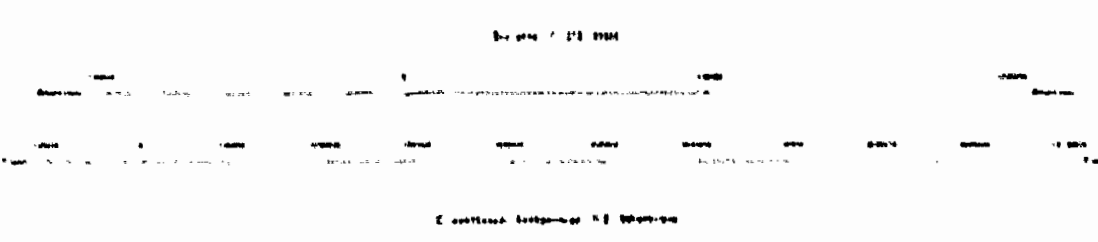
DISPOSITION OF CROWN LANDS

AREAS WITHDRAWN FROM DISPOSITION

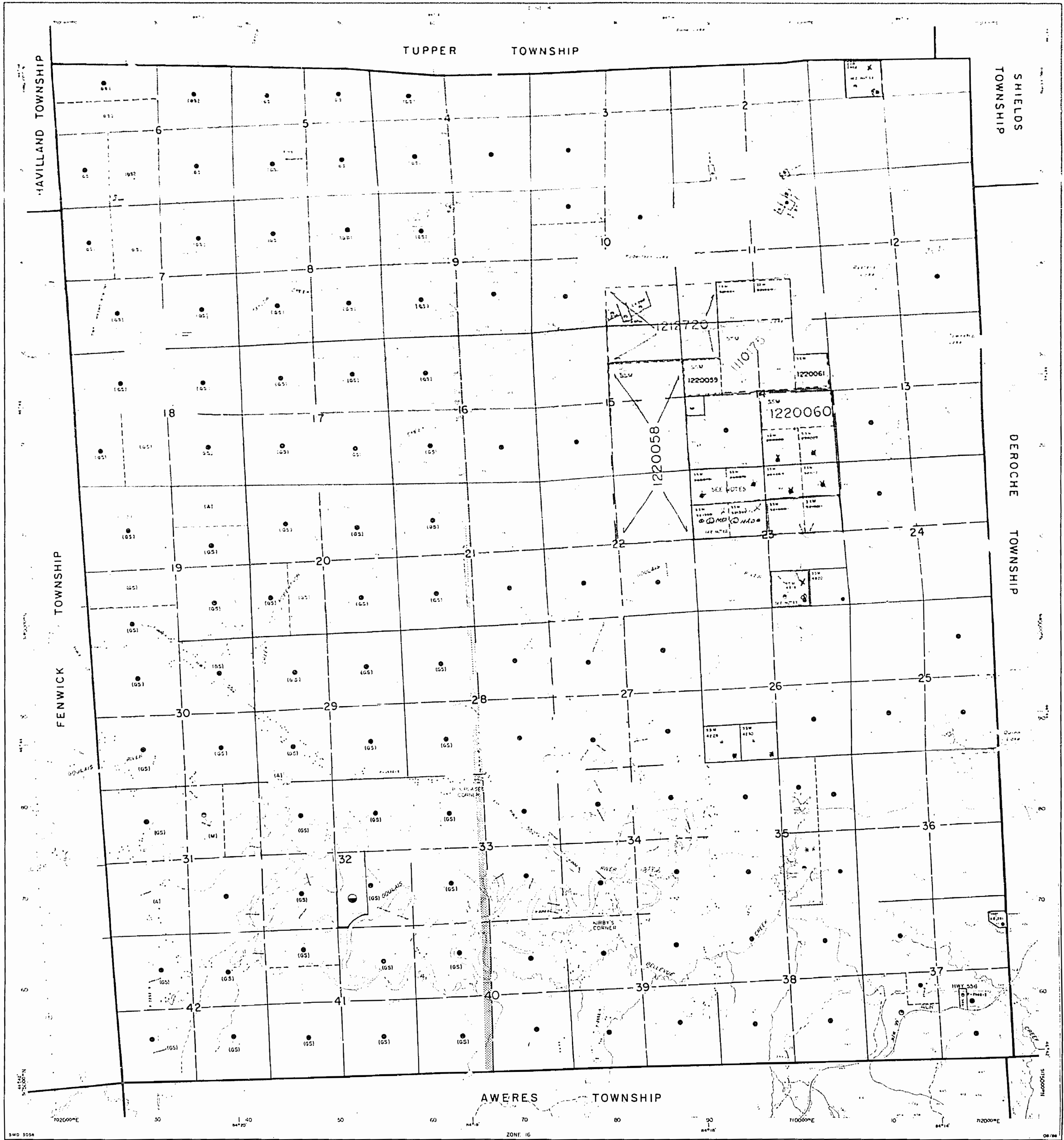
- Various symbols and line styles representing different land types and boundaries.

- Legend for Disposition of Crown Lands, including symbols for various land acquisition methods.

- Legend for Areas Withdrawn from Disposition, including symbols for different withdrawal types.



NOTES: This plan is a reproduction of the original plan... It is not to be used as a legal document...



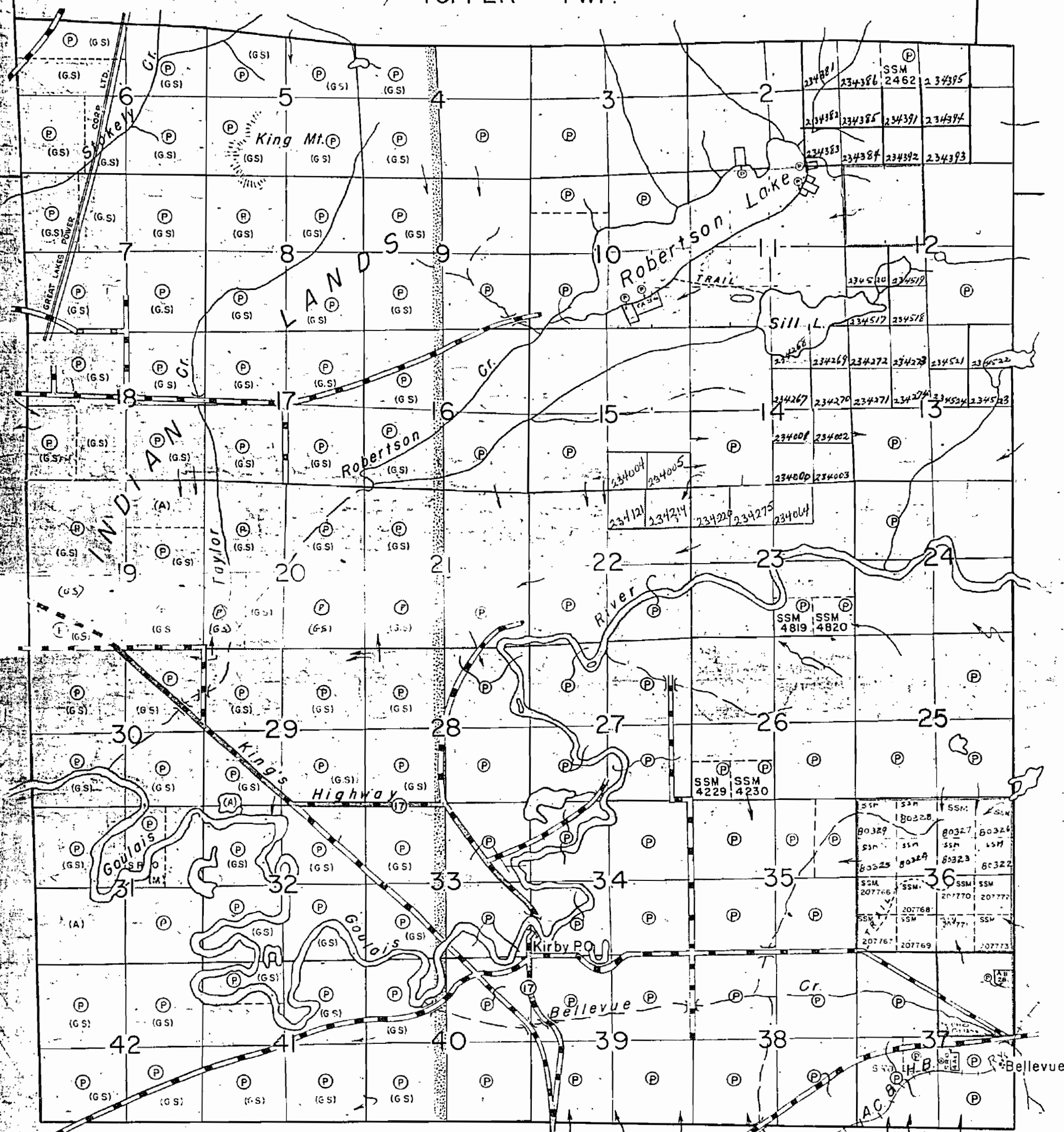
TUPPER TWP.

SHIELDS TWP.

DEROCHE TWP.

AWERES TWP.

THE TOWNSHIP OF
VANKOUGHNET
DISTRICT OF ALGOMA
SAULT STE. MARIE
MINING DIVISION
SCALE: 1-INCH=40 CHAINS



LEGEND

- PATENTED LAND Ⓟ
- CROWN LAND SALE CS
- LOCATED LAND Loc.
- LICENSE OF OCCUPATION L.O.
- ROADS — — — — —
- IMPROVED ROADS = = = = =
- RAILWAYS —+—+—+—+—
- POWER LINES - - - - -
- MARSH OR MUSKEG [stippled pattern]

NOTES

- Ⓟ - Surface & Mining Rights controlled by the Crown (Canada)
- (G.S.) - Gold & Silver only controlled by the Crown (Canada)
- M) - Mining Rights controlled by the Crown (Canada)
- Enquiries regarding (G.S.) & (M), should be directed to the Chief, Reserves & Trusts, Indian Affairs Branch, Dept. of Fisheries & Immigration, Ottawa.
- S.R.O. - Surface Rights Only
- M.R.O. - Mining Rights Only
- CLAIMS IN SECTIONS OUTLINED IN GREEN MAY REQUIRE A SURVEY.
J.R.M. L.S. Mar. 16/70
- 400' surface rights reservation around all lakes & rivers.
- DESCRIPTION CAN BE PREPARED FOR CLAIMS IN SECTIONS OUTLINED IN ORANGE.
J.R.M. L.S. Mar. 16/70

PLAN NO.— M-1365
DEPARTMENT OF MINES
— ONTARIO —

HAVILAND TWP.

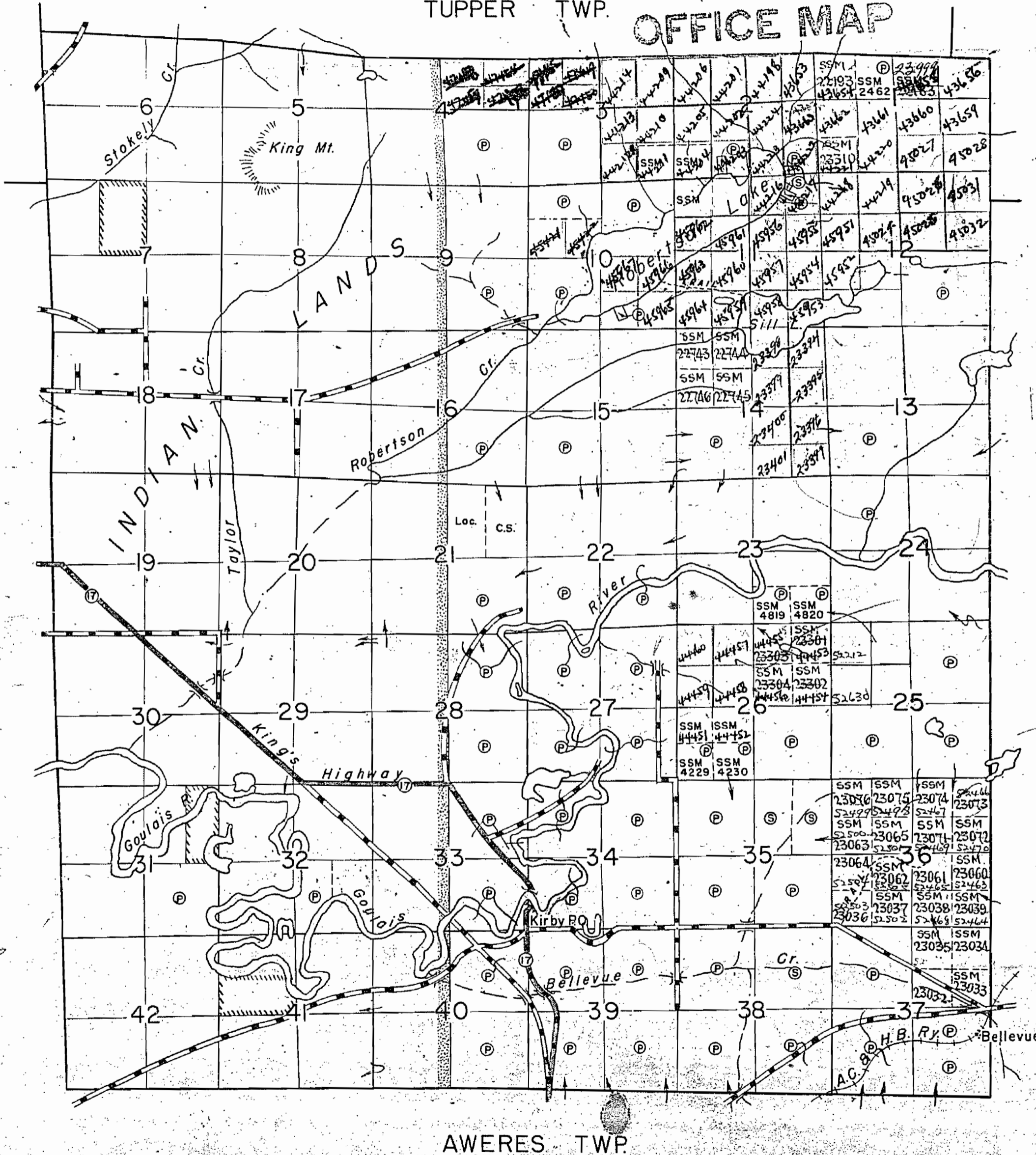
TUPPER TWP.

OFFICE MAP

SHIELDS TWP.

FENWICK TWP.

DEROCHE TWP.



AWERES TWP.

THE TOWNSHIP OF
OF
VANKOUGHNET
DISTRICT OF
ALGOMA
SAULT STE. MARIE
MINING DIVISION
SCALE 1-INCH=40 CHAINS

LEGEND

PATENTED LAND	⊙
CROWN LAND SALE	⊙
LOCATED LAND	Loc.
LICENSE OF OCCUPATION	L.O.
ROADS	—
IMPROVED ROADS	—
RAILWAYS	—
POWER LINES	—
MARSH OR MUSKEG	—

NOTES

LAND IN THE CROWN IN THE RIGHT OF THE PROVINCE SHOWN HEREON THUS:

600 FEET ON EACH SIDE OF THE CENTRE LINE OF HIGHWAY NO.17 IS VESTED IN THE DEPT. OF HIGHWAYS

*many with the possibility
Jan 15 4 on following
Pt. of E. 1/4 Sec 37 = 40 acres
Pt. of S. 1/4 Sec 37 = 140.2 acres
approximate*

M. 1365
PLAN NO.- S.S.M.103
DEPARTMENT OF MINES
- ONTARIO -

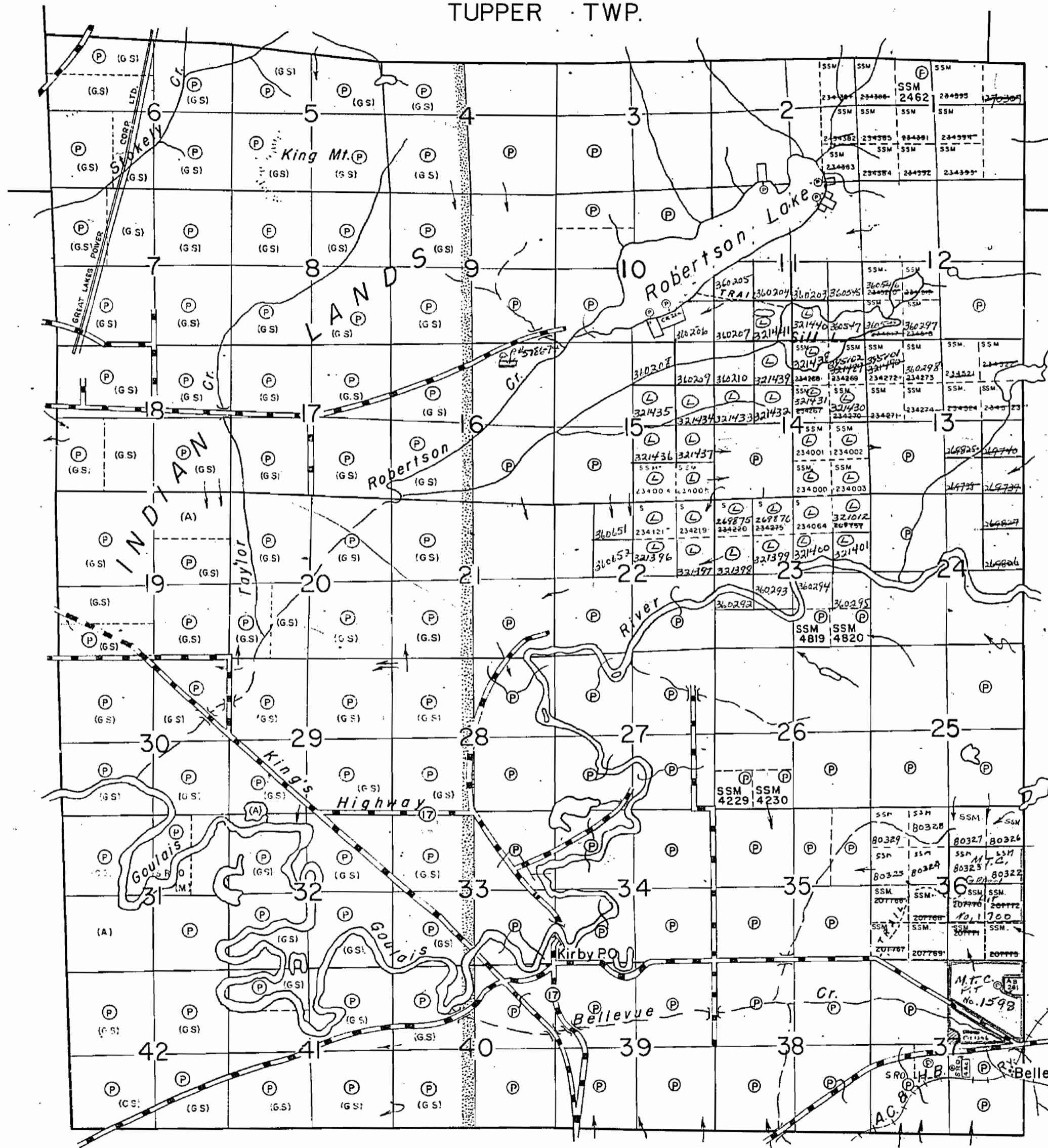
HAVILAND TWP.

FENWICK TWP.

TUPPER TWP.

SHIELDS TWP.

DEROCHE TWP.



AWERES TWP.

THE TOWNSHIP
OF
VANKOUGHNET
DISTRICT OF
ALGOMA
SAULT STE. MARIE
MINING DIVISION
SCALE: 1-INCH=40 CHAINS

LEGEND

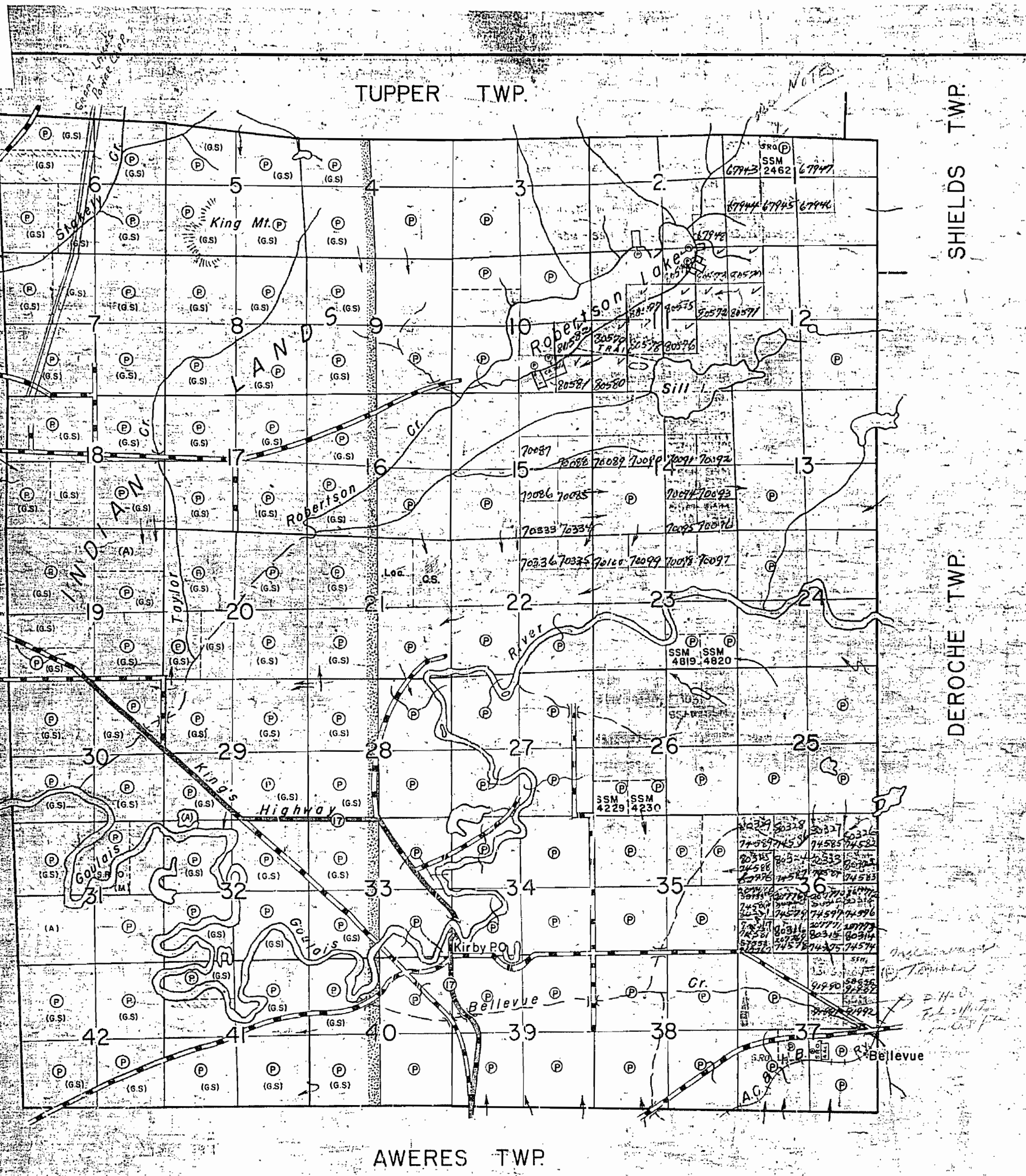
- PATENTED LAND P
- CROWN LAND, SALE C.S.
- LOCATED LAND Loc.
- LICENSE OF OCCUPATION L.O.
- ROADS ————
- IMPROVED ROADS ————
- RAILWAYS ————
- POWER LINES ————
- MARSH OR MUSKEG ————

NOTES

- (A) - Surface & Mining Rights controlled by the Crown (Canada).
- (G.S.) - Gold & Silver only controlled by the Crown (Canada).
- (M) - All Mining Rights controlled by the Crown (Canada).
- Enquiries regarding (A), (G.S.) & (M), should be directed to the Chief, Reserves & Trusts, Indian Affairs Branch, Dept. of Citizenship & Immigration, Ottawa.
- S.R.O. - Surface Rights Only.
- M.R.O. - Mining Rights Only.

400' surface rights reservation around all lakes & rivers.

PLAN NO.- M-1365
DEPARTMENT OF MINES
- ONTARIO -



THE TOWNSHIP
OF
VANKOUGHNET
DISTRICT OF
ALGOMA
SAULT STE. MARIE
MINING DIVISION
SCALE: 1-INCH=40 CHAINS

LEGEND

PATENTED LAND	Ⓟ
CROWN LAND SALE	C.S.
LOCATED LAND	Loc.
LICENSE OF OCCUPATION	L.O.
ROADS	—
IMPROVED ROADS	—
RAILWAYS	—
POWER LINES	—
MARSH OR MUSKEG	—

NOTES

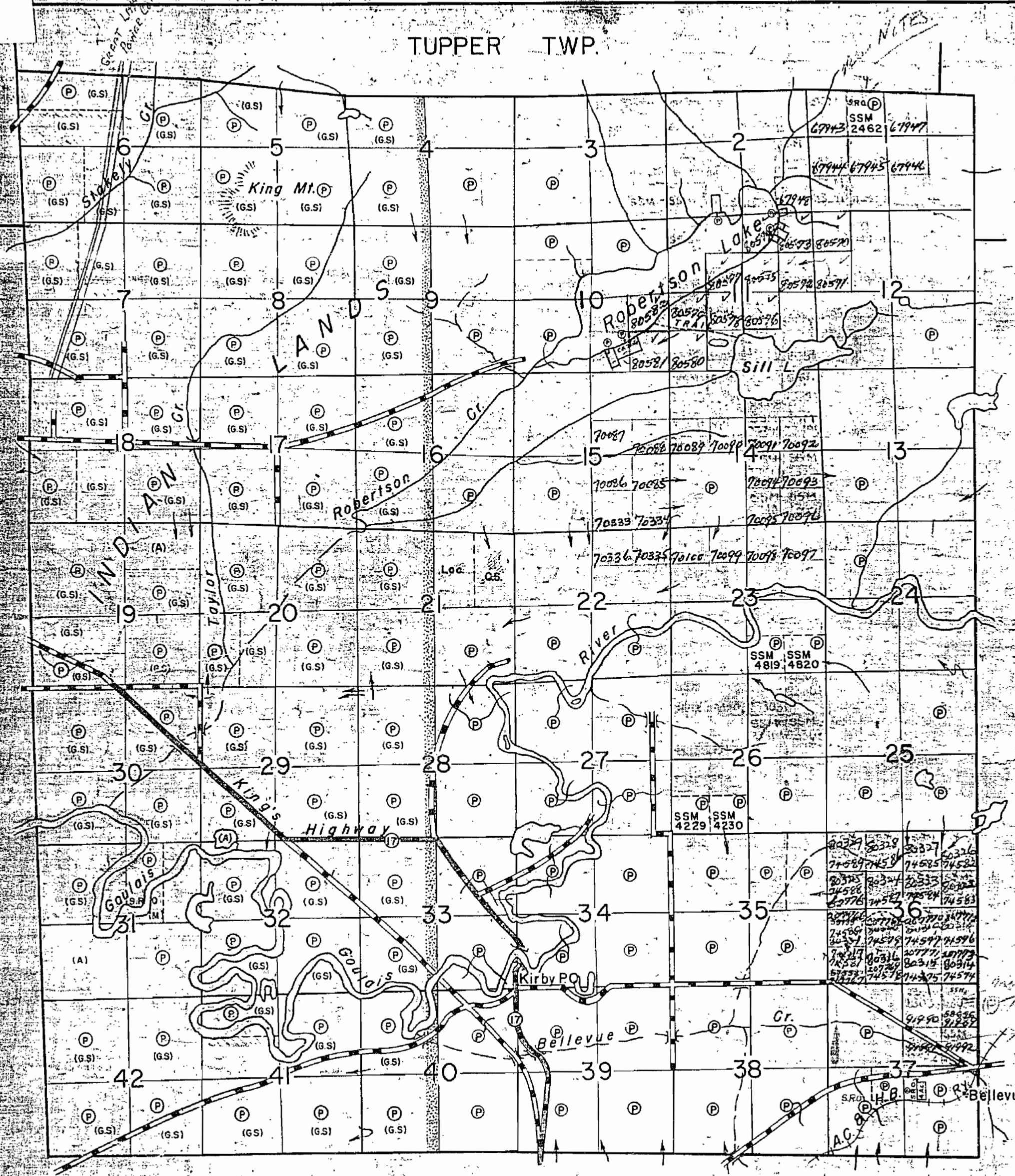
(A) - Surface & Mining Rights controlled by the Crown (Canada).
 (G.S.) - Gold & Silver only controlled by the Crown (Canada).
 (M) - All Mining Rights controlled by the Crown (Canada).
 Enquiries regarding (A), (G.S.) & (M), should be directed to the Chief, Reserves & Trusts, Indian Affairs Branch, Dept. of Citizenship & Immigration, Ottawa.

S.R.O. - Surface Rights Only.
 M.R.O. - Mining Rights Only.

Eng. W. W. ...
...
...

400' Reserve around all lakes & rivers to Dept. of Lands & Forests.

PLAN NO.- M-1365-
DEPARTMENT OF MINES
- ONTARIO -



THE TOWNSHIP
OF
VANKOUGHNET
DISTRICT OF
ALGOMA
SAULT STE. MARIE
MINING DIVISION
SCALE: 1-INCH=40 CHAINS

LEGEND

PATENTED LAND	Ⓟ
CROWN LAND SALE	C.S.
LOCATED LAND	Loc.
LICENSE OF OCCUPATION	L.O.
ROADS	—
IMPROVED ROADS	—
RAILWAYS	—
POWER LINES	—
MARSH OR MUSKEG	—

NOTES

(A) - Surface & Mining Rights controlled by the Crown (Canada).
 (G.S.) - Gold & Silver only controlled by the Crown (Canada).
 (M) - All Mining Rights controlled by the Crown (Canada).
 Enquiries regarding (A), (G.S.) & (M), should be directed to the Chief, Reserves & Trusts, Indian Affairs Branch, Dept. of Citizenship & Immigration, Ottawa.

S.R.O. - Surface Rights Only.
 M.R.O. - Mining Rights Only.

400' Reserve around all lakes & rivers to Dept. of Lands & Forests.

PLAN NO. - M-1365
 DEPARTMENT OF MINES
 - ONTARIO -

HAVILAND TWP.

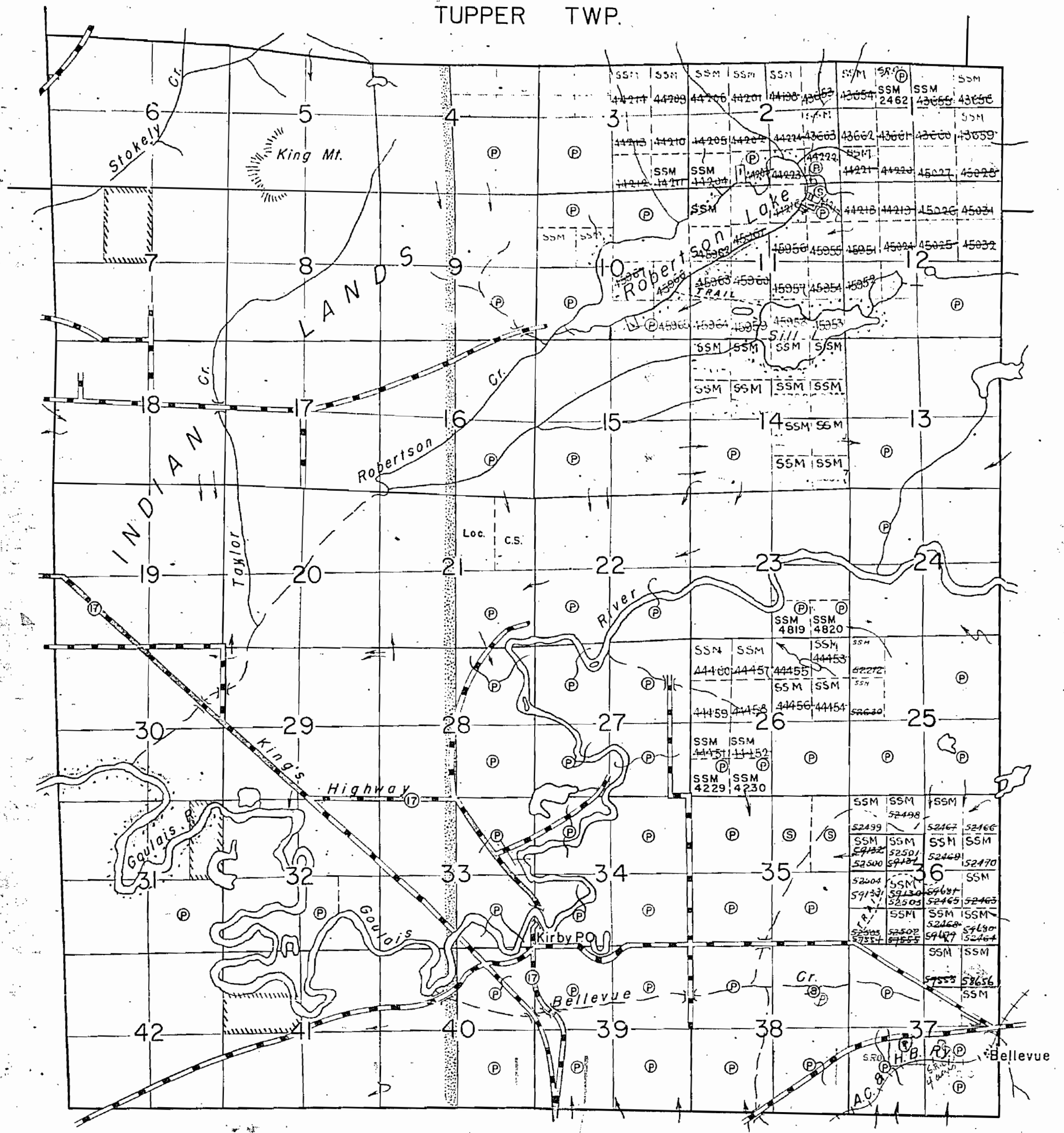
FENWICK TWP.

TUPPER TWP.

SHIELDS TWP.

DEROCHE TWP.

THE TOWNSHIP OF
OF
VANKOUGHNET
DISTRICT OF ALGOMA
SAULT STE. MARE
MINING DIVISION
SCALE: 1-INCH=40 CHAINS

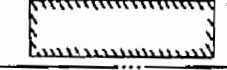


LEGEND

- PATENTED LAND (P)
- CROWN LAND SALE (S)
- LOCATED LAND (Loc.)
- LICENSE OF OCCUPATION (L.O.)
- ROADS (---)
- IMPROVED ROADS (---)
- RAILWAYS (---)
- POWER LINES (---)
- MARSH OR MUSKEG (---)

NOTES

LAND IN THE CROWN IN THE RIGHT OF THE PROVINCE SHOWN HEREON THUS:—



600 FEET ON EACH SIDE OF THE CENTRE LINE OF HIGHWAY NO. 17 IS VESTED IN THE DEPT. OF HIGHWAYS

400' Resid. of Dept. of L. & C. shown here:
PT. of SE 1/4 Sec. 37 4.0 acres
M.R.O. open June 1/54 Ont. Gazette
PT. of SW 1/4 Sec. 37 141.20 acres
M.R.O. open June 1/54 Ont. Gazette
Any Rts in E 1/2 of N.W. Subdivisions
of Sec. 1 (S.M. 2462) open
June 1/57 Ont. Gazette No 467

PLAN NO.— M-1365

DEPARTMENT OF MINES

— ONTARIO —

AWERES TWP.

HAVILAND TWP.

FENWICK TWP.

TUPPER TWP.

OFFICE MAP

SHIELDS TWP.

DEROCHE TWP.

THE TOWNSHIP OF

VANKOUGHNET

DISTRICT OF ALGOMA

SAULT STE. MARE MINING DIVISION

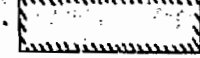
SCALE: 1-INCH=40 CHAINS

LEGEND

- PATENTED LAND (P)
- CROWN LAND SALE (S)
- LOCATED LAND Loc.
- LICENSE OF OCCUPATION L.O.
- ROADS (---)
- IMPROVED ROADS (==)
- RAILWAYS (—+—+—+—)
- POWER LINES (---)
- MARSH OR MUSKEG (---)

NOTES

LAND IN THE CROWN IN THE RIGHT OF THE PROVINCE SHOWN HEREON THUS:—



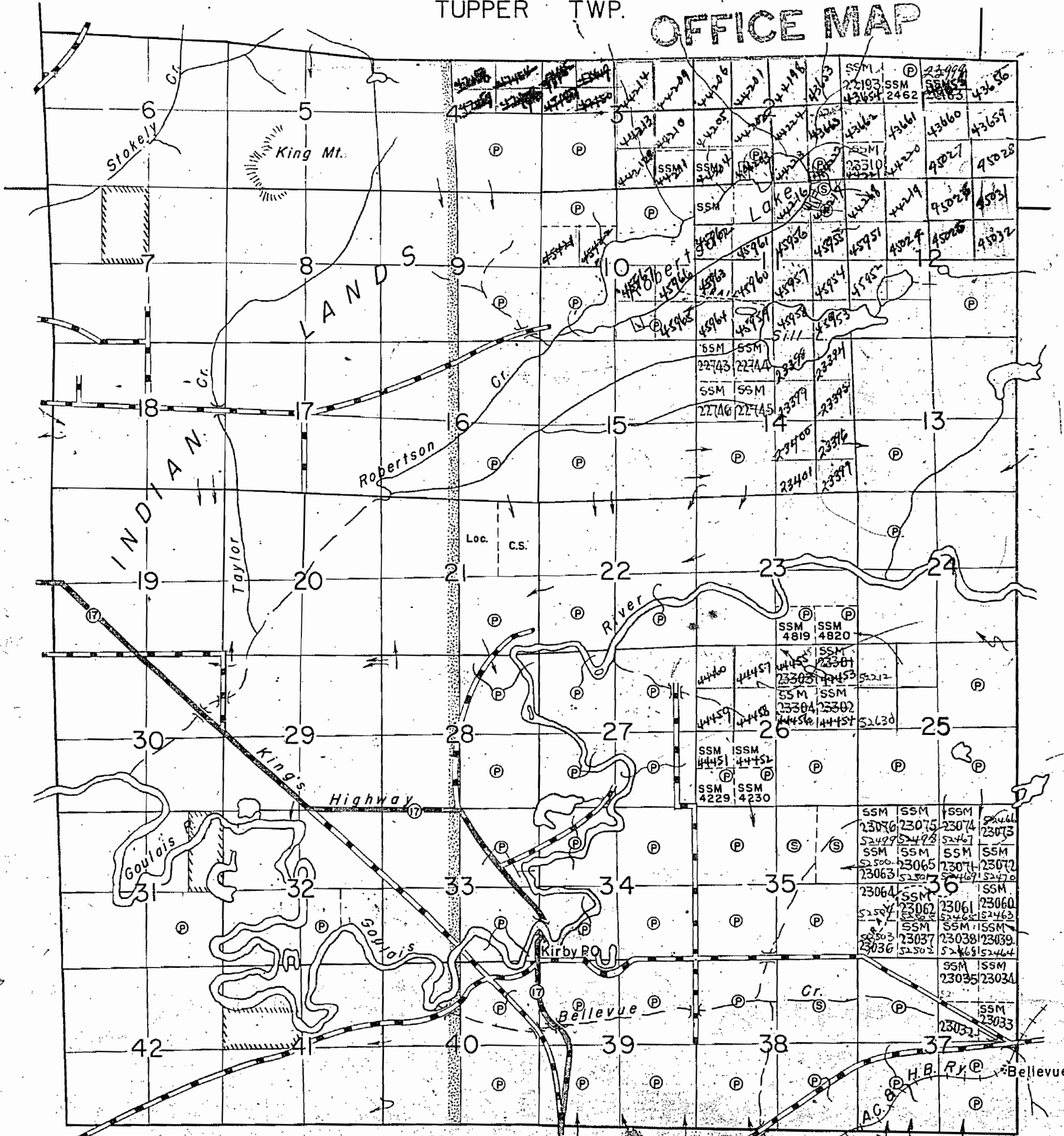
600 FEET ON EACH SIDE OF THE CENTRE LINE OF HIGHWAY NO. 17 IS VESTED IN THE DEPT. OF HIGHWAYS

*many rights after finality
 June 15, 40 following
 Pt. of E. 1/4 Sec 37 - 40 acres
 Pt. of S. 1/4 Sec 37 - 140.2 acres
 common pastures*

M. 1365

PLAN NO.- S.S.M.103

DEPARTMENT OF MINES
- ONTARIO -



AWERES TWP.

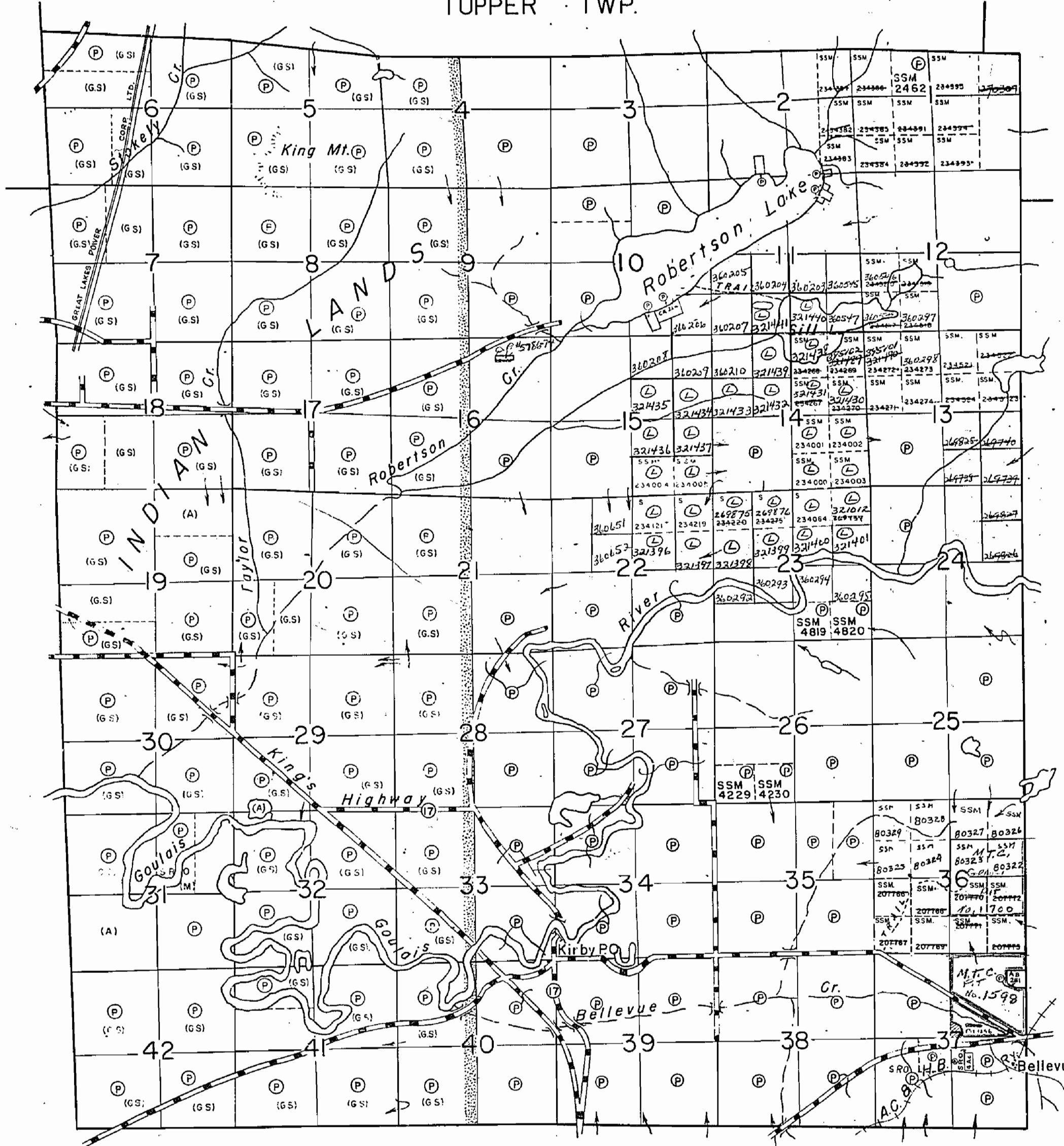
HAVILAND TWP.

FENWICK TWP.

TUPPER TWP.

SHIELDS TWP.

DEROCHE TWP.



THE TOWNSHIP
OF
VANKOUGHNET
DISTRICT OF
ALGOMA
SAULT STE. MARIE
MINING DIVISION
SCALE: 1-INCH=40 CHAINS

LEGEND

PATENTED LAND	Ⓟ
CROWN LAND, SALE	C.S.
LOCATED LAND	Loc.
LICENSE OF OCCUPATION	L.O.
ROADS	— — — — —
IMPROVED ROADS	— — — — —
RAILWAYS	— + — + — + —
POWER LINES	— · — · — · —
MARSH OR MUSKEG	⊘

NOTES

(A) - Surface & Mining Rights controlled by the Crown-(Canada).
 (GS) - Gold & Silver only controlled by the Crown (Canada).
 (M) - All Mining Rights controlled by the Crown (Canada).
 Enquiries regarding (A), (GS) & (M), should be directed to the Chief, Reserves & Trusts, Indian Affairs Branch, Dept. of Citizenship & Immigration, Ottawa.

S.R.O - Surface Rights Only.
 M.R.O - Mining Rights Only.

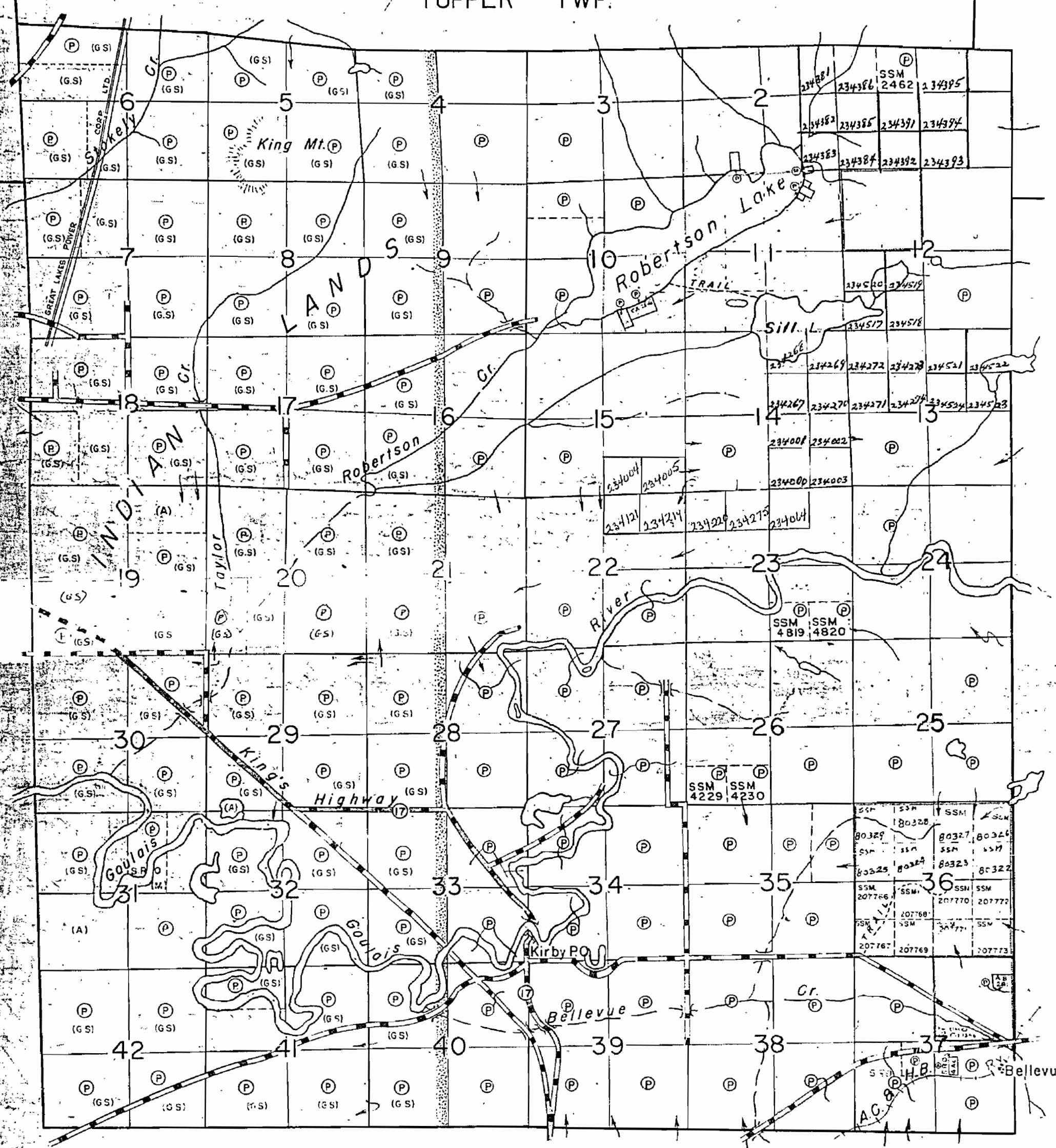
400' surface rights reservation around all lakes & rivers.

PLAN NO.- M-1365
DEPARTMENT OF MINES
- ONTARIO -

TUPPER TWP.

SHIELDS TWP.

DEROCHE TWP.



AWERES TWP.

THE TOWNSHIP OF
OF
VANKOUGHNET
DISTRICT OF
ALGOMA
SAULT STE. MARIE
MINING DIVISION
SCALE: 1-INCH=40 CHAINS

LEGEND

PATENTED LAND	Ⓟ
CROWN LAND SALE	CS
LOCATED LAND	Loc.
LICENSE OF OCCUPATION	LO
ROADS	—
IMPROVED ROADS	—
RAILWAYS	—
POWER LINES	—
MARSH OR MUSKEG	—

NOTES

Ⓟ - Surface & Mining Rights controlled by the Crown - (C. 1000)

(G.S.) - Gold & Silver only controlled by the Crown (Canada)

(M) - Mining Rights controlled by the Crown (Canada)

Enquiries regarding (G.S.) & (M), should be directed to the Chief, Revenues & Trusts, Indian Affairs Branch, Dept. of Fisheries & Immigration, Ottawa.

S.R.O. - Surface Rights Only

M.R.O. - Mining Rights Only

☐ CLAIMS IN SECTIONS OUTLINED IN GREEN MAY REQUIRE A SURVEY.
J.R.M. L.S. Mar. 16/70

• 400' surface rights reservation around all lakes & rivers.

☐ DESCRIPTION CAN BE PREPARED FOR CLAIMS IN SECTIONS OUTLINED IN ORANGE.
J.R.M. L.S. Mar. 16/70

PLAN NO.- M-1365

DEPARTMENT OF MINES
- ONTARIO -

HAVILAND TWP.

FENWICK TWP.

TUPPER TWP.

SHIELDS TWP.

DEROCHE TWP.

THE TOWNSHIP OF
OF
VANKOUGHNET

DISTRICT OF
ALGOMA

SAULT STE. MARIE
MINING DIVISION

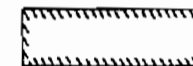
SCALE: 1-INCH= 40 CHAINS

LEGEND

- PATENTED LAND (P)
- CROWN LAND SALE (S)
- LOCATED LAND (Loc.)
- LICENSE OF OCCUPATION (L.O.)
- ROADS (---)
- IMPROVED ROADS (---)
- RAILWAYS (---)
- POWER LINES (---)
- MARSH OR MUSKIEG (---)

NOTES

LAND IN THE CROWN IN THE RIGHT OF THE PROVINCE SHOWN HEREON THUS:-



600 FEET ON EACH SIDE OF THE CENTRE LINE OF HIGHWAY NO. 17 IS VESTED IN THE DEPT. OF HIGHWAYS

400' Rsid. & Jpt. of L. & R. shown as:

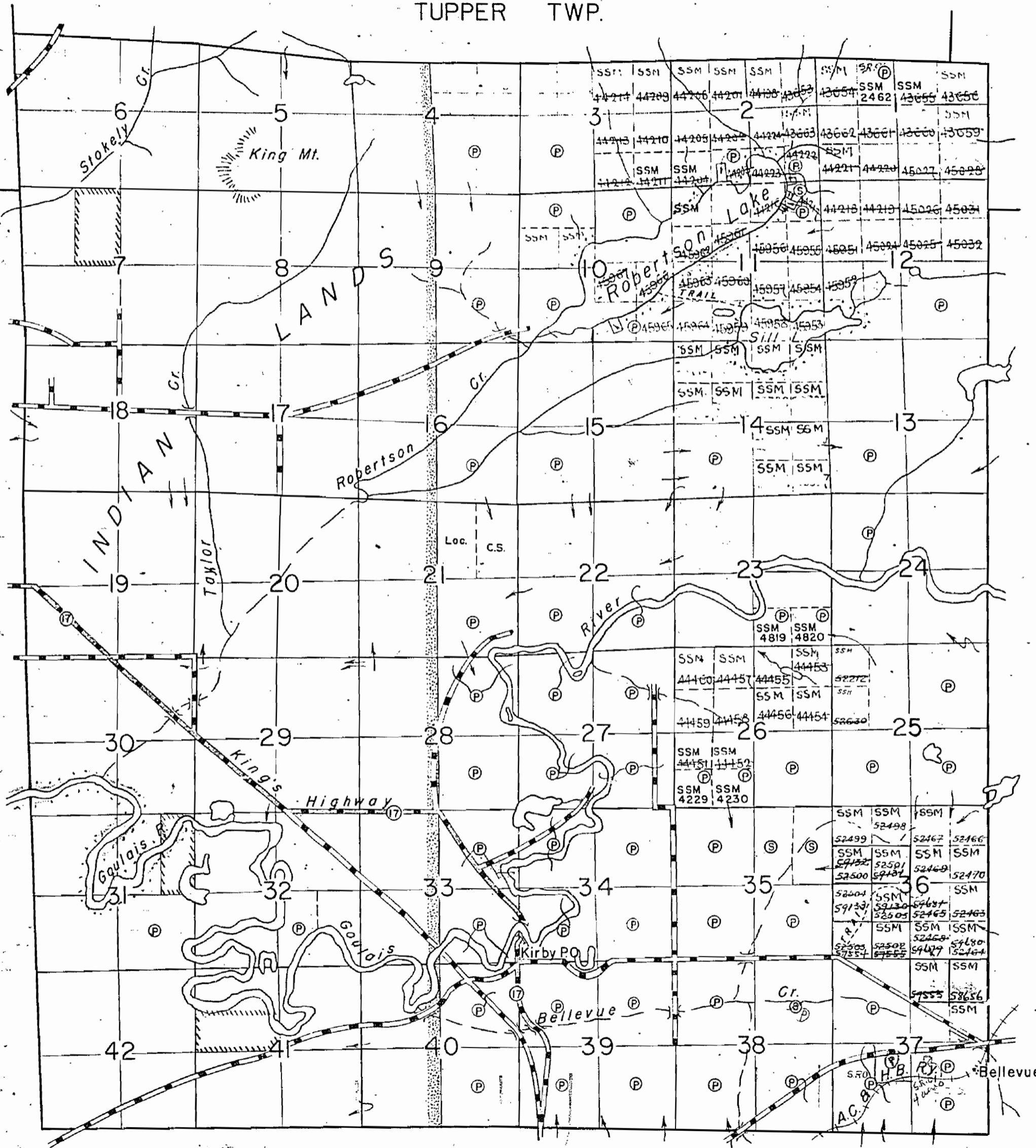
PT. of SE 1/4 Sec. 37 4.0 acres
M.R.O. open June 1/54. Cont. Gazette

PT. of SW 1/4 Sec. 37 141.20 acres
M.R.O. open June 1/54. Cont. Gazette

Ang. Rts in E 1/2 of N.W. Subdivision
of Sec. 1 (S.M. 2462) open
June 1/57 Cont. Gazette Aug 4/57

PLAN NO.- M-1365

DEPARTMENT OF MINES
- ONTARIO -



AWERES TWP.