

# PLAN OF TWP 3D

(WARDLE) G.3342

MISSISSAGI PROVINCIAL FOREST RESERVE.

S. STE MARIE MINING DIVISION.

DISTRICT OF ALGOMA.

Scale: 40 chains to an inch.

TWP. 4 D.

DATE OF ISSUE

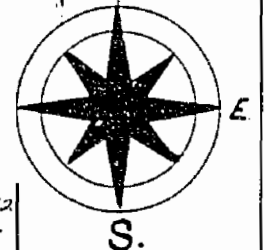
OCT. 31 1955

SAULT-STE. MARIE,  
MINING RECORDERS OFFICE

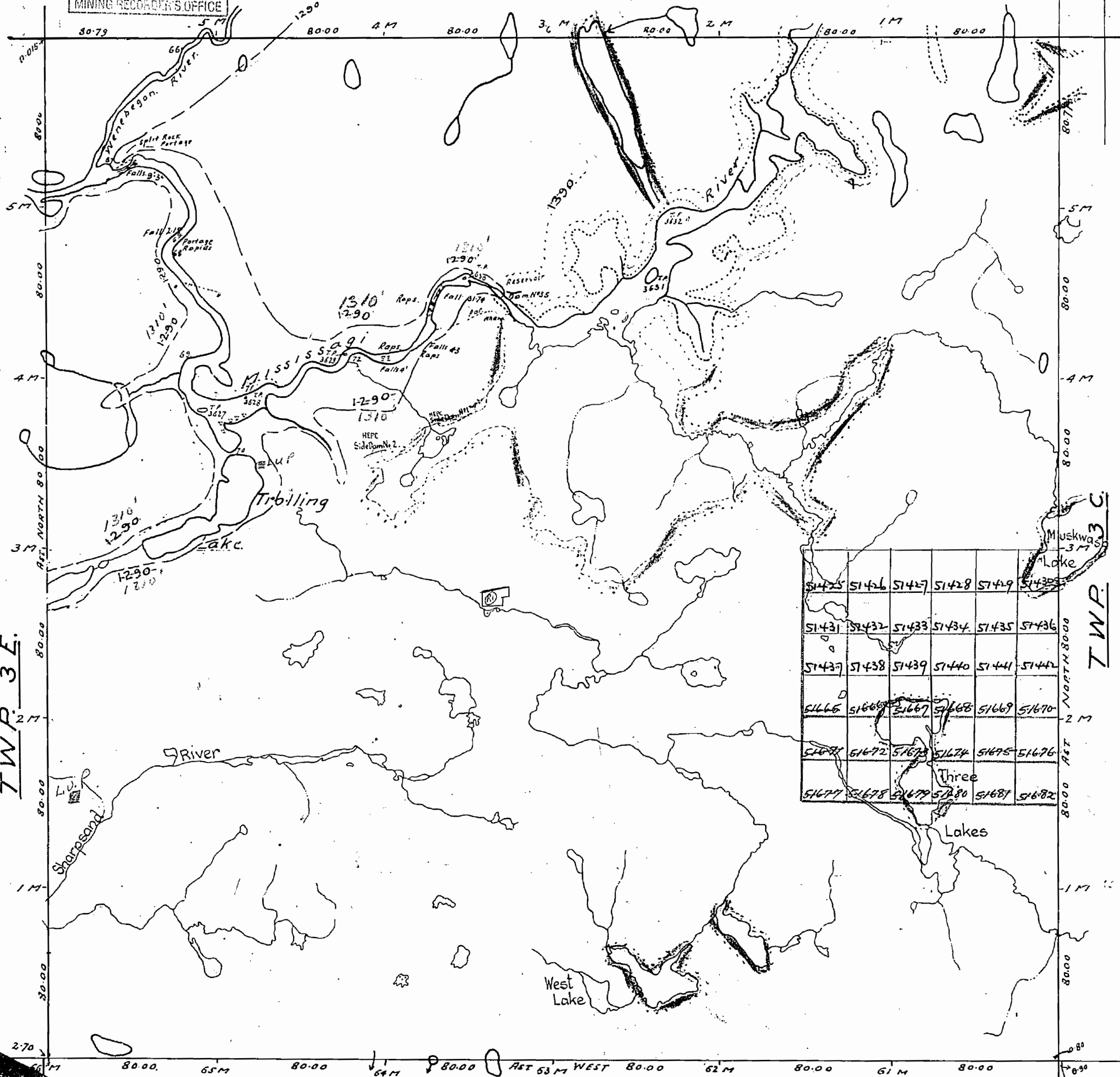
NOTES

(R) S.R.O. withdrawn from staking  
See ORDER # W. 3182 - dated Nov. 15/52  
BLIND RIVER, ONT.

W.



S.



51425	51426	51427	51428	51429	51430
51431	51432	51433	51434	51435	51436
51437	51438	51439	51440	51441	51442
51665	51666	51667	51668	51669	51670
51671	51672	51673	51674	51675	51676
51677	51678	51679	51680	51681	51682

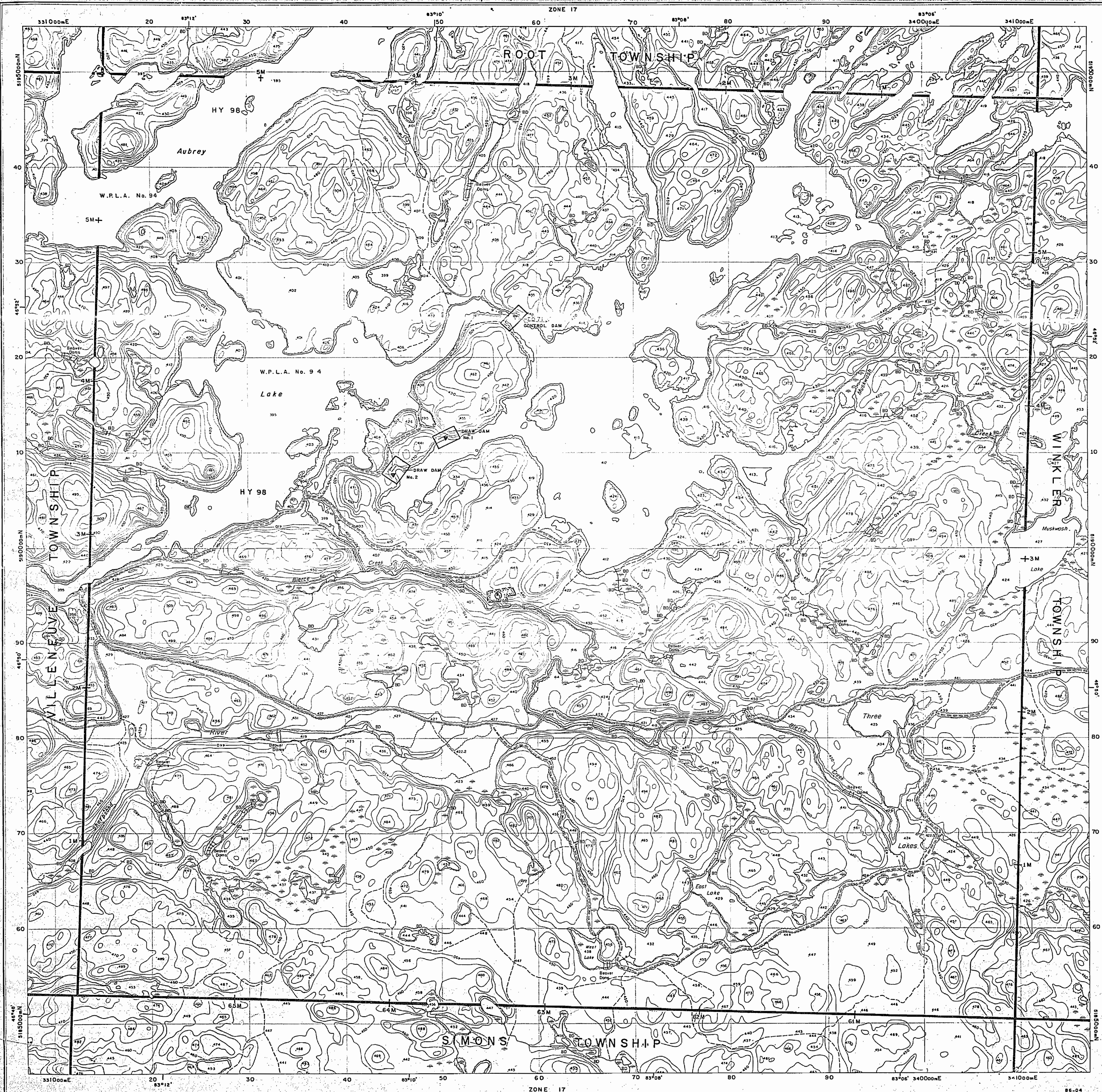
TWP. 2 D.

Approximate boundaries of areas liable to

FLOODING RIGHTS TO H.E.R.C. CONTOUR 1290

Revised by mfb 10/1/84





Ministry of  
Natural  
Resources

Ministry of  
Northern Development  
and Mines

## INDEX TO LAND DISPOSITION

PLAN

G-3342

TOWNSHIP

# WARDLE

M.N.R. ADMINISTRATIVE DISTRICT

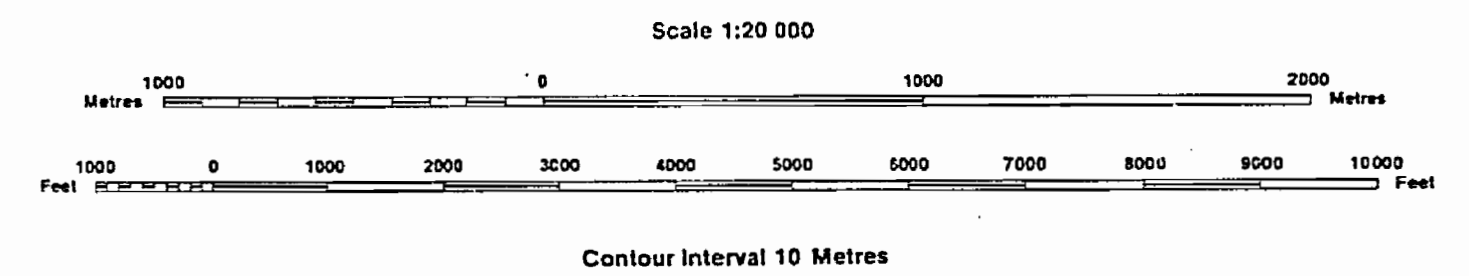
BLIND RIVER

MINING DIVISION

SAULT STE. MARIE

LAND TITLES/REGISTRY DIVISION

ALGOMA



## AREAS WITHDRAWN FROM DISPOSITION

MRO - Mining Rights Only  
SRO - Surface Rights Only  
M + S - Mining and Surface Rights

Description	Order No.	Date	Disposition	File
SEC. 36/80	W. 3/82	15/11/82	SRO	100505

## SYMBOLS

Boundary	.....
Township, Meridian, Baseline	.....
Road allowance; surveyed	.....
shoreline	.....
Lot/Concession; surveyed	.....
unsurveyed	.....
Parcel; surveyed	.....
unsurveyed	.....
Right-of-way; road	.....
railway	.....
utility	.....
Reservation	.....
Cliff, Pit, Pile	.....
Contour	.....
Interpolated	.....
Approximate	.....
Depression	.....
Control point (horizontal)	.....
Flooded land	.....
Mine head frame	.....
Pipeline (above ground)	.....
Railway; single track	.....
double track	.....
abandoned	.....
Road; highway, county, township	.....
access	.....
trail, bush	.....
Shoreline (original)	.....
Transmission line	.....
Wooded area	.....

## NOTES

FLOODING RIGHTS TO CONTOUR ELEVATION 1300' ON MISSISSAGI RIVER (BELOW ROCKY ISLAND LAKE DAMSITE), WENEBEGON RIVER AND TROLLING LAKE RESERVED FOR WATER POWER DEVELOPMENT AT THE AUBREY FALLS POWER SITE TO ONTARIO HYDRO AND W.P.L.A. No. 94

## DISPOSITION OF CROWN LANDS

Patent	.....
Surface & Mining Rights	.....
Surface Rights Only	.....
Mining Rights Only	.....
Lease	.....
Surface & Mining Rights	.....
Surface Rights Only	.....
Mining Rights Only	.....
Licence of Occupation	.....
Order-in-Council	.....
Cancelled	.....
Reservation	.....
Sand & Gravel	.....

The 1980 Magnetic Bearing  
Approx. 1/2° Annual Change  
to increasing 2°

THE INFORMATION THAT  
APPEARS ON THIS MAP  
HAS BEEN COMPILED  
FROM VARIOUS SOURCES,  
AND ACCURACY IS NOT  
GUARANTEED. THOSE  
WISHING TO STAKE MIN-  
ING CLAIMS SHOULD CON-  
SULT WITH THE MINING  
RECORDS, MINISTRY OF  
NORTHERN DEVELOP-  
MENT AND MINES, FOR AD-  
DITIONAL INFORMATION  
ON THE STATUS OF THE  
LANDS SHOWN HEREON.

