

REFERENCES

*Remains of  
18/11/83*

REFERENCES

**AREAS WITHDRAWN FROM DISPOSITION**

M.R.O. - MINING RIGHTS ONLY  
S.R.O. - SURFACE RIGHTS ONLY  
M.+S. - MINING AND SURFACE RIGHTS

Description	Order No.	Date	Disposition	File
(R <sub>2</sub> )	W 62/76	21/10/76	S+M	183199
(R <sub>2</sub> )	W 52/83	30/8/83	M.+S.	

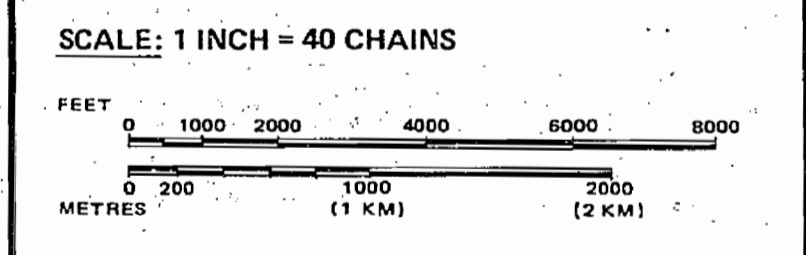
LEGEND

- HIGHWAY AND ROUTE No.
- OTHER ROADS
- TRAILS
- SURVEYED LINES:
  - TOWNSHIPS, BASE LINES, ETC.
  - LOTS, MINING CLAIMS, PARCELS, ETC.
- UNSURVEYED LINES:
  - LOT LINES
  - PARCEL BOUNDARY
  - MINING CLAIMS ETC.
- RAILWAY AND RIGHT OF WAY
- UTILITY LINES
- NON-PERENNIAL STREAM
- FLOODING OR FLOODING RIGHTS
- SUBDIVISION OR COMPOSITE PLAN
- RESERVATIONS
- ORIGINAL SHORELINE
- MARSH OR MUSKOG
- MINES
- TRAVERSE MONUMENT

DISPOSITION OF CROWN LANDS

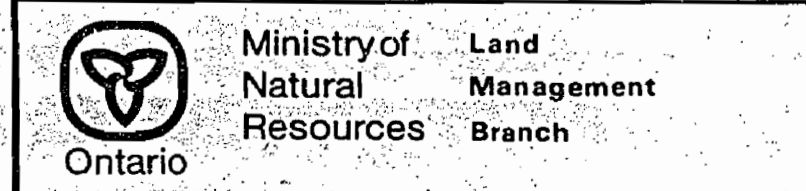
TYPE OF DOCUMENT	SYMBOL
PATENT, SURFACE & MINING RIGHTS	●
" SURFACE RIGHTS ONLY	○
" MINING RIGHTS ONLY	○
LEASE, SURFACE & MINING RIGHTS	■
" SURFACE RIGHTS ONLY	■
" MINING RIGHTS ONLY	■
LICENCE OF OCCUPATION	▼
ORDER-IN-COUNCIL	○
RESERVATION	○
CANCELLED	⊗
SAND & GRAVEL	⊙

NOTE: MINING RIGHTS IN PARCELS PATENTED PRIOR TO MAY 6, 1912, VESTED IN ORIGINAL PATENTEES BY THE PUBLIC LANDS ACT, R.S.O. 1970, CHAP. 380, SEC. 63, SUBSEC. 1.



TOWNSHIP

AREA  
**WEST OF GENTLES TP.**  
M.N.R. ADMINISTRATIVE DISTRICT  
**MOOSONEE**  
MINING DIVISION  
**PORCUPINE**  
LAND TITLES / REGISTRY DIVISION  
**COCHRANE**

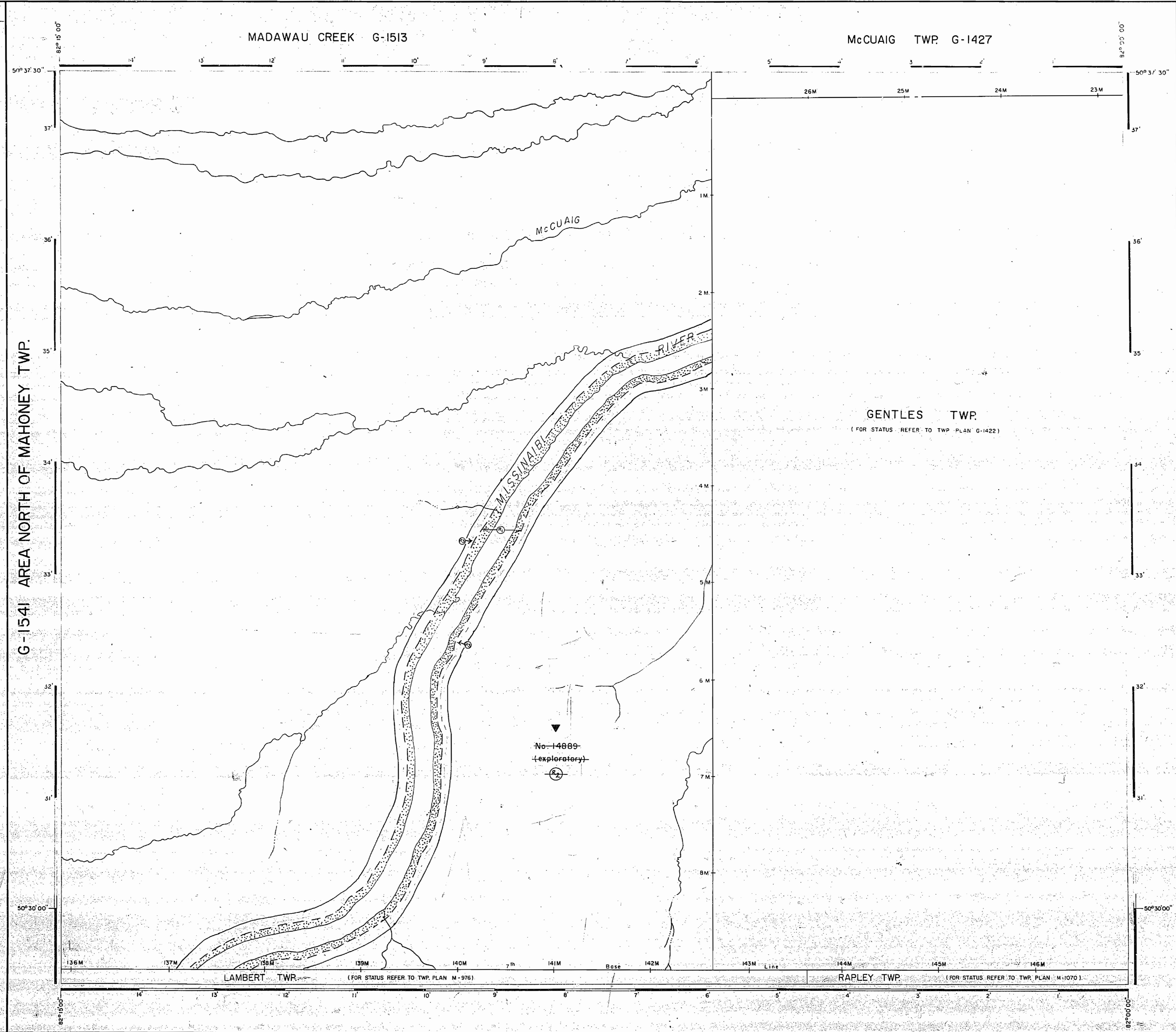


Date: DECEMBER, 1982  
Number: **G-1612**

**REFERENCES**

MINING AND SURFACE RIGHTS REOPENED  
ORDER DATED SEPTEMBER 15, 1986  
(FIELD # 14889)

PROPOSED MISSISSAUGA PARK BOUNDARY EXPANSION  
NOTICE RECEIVED JULY 4, 1994  
MISSISSAUGA PROVINCIAL PARK



**REFERENCES**

AREAS WITHDRAWN FROM DISPOSITION

M R O	MINING RIGHTS ONLY
S R O	SURFACE RIGHTS ONLY
M + S	MINING AND SURFACE RIGHTS

Description	Order No	Date	Disposition	File
⊙	W 62 / 76	21/10/76	M+S	183199
⊙	J 52/83	30/8/83	M+S	

*Revision March 14/87*

**LEGEND**

HIGHWAY AND ROUTE No	
OTHER ROADS	
TRAILS	
SURVEYED LINES:	
TOWNSHIPS, BASE LINES, ETC.	
LOTS, MINING CLAIMS, PARCELS, ETC.	
UNSURVEYED LINES:	
LOT LINES	
PARCEL BOUNDARY	
MINING CLAIMS ETC.	
RAILWAY AND RIGHT OF WAY	
UTILITY LINES	
NON-PERENNIAL STREAM	
FLOODING OR FLOODING RIGHTS	
SUBDIVISION OR COMPOSITE PLAN	
RESERVATIONS	
ORIGINAL SHORELINE	
MARSH OR MUSKEG	
MINES	
TRAVERSE MONUMENT	

**DISPOSITION OF CROWN LANDS**

TYPE OF DOCUMENT	SYMBOL
PATENT, SURFACE & MINING RIGHTS	●
" SURFACE RIGHTS ONLY	○
" MINING RIGHTS ONLY	⊙
LEASE, SURFACE & MINING RIGHTS	■
" SURFACE RIGHTS ONLY	□
" MINING RIGHTS ONLY	⊞
LICENCE OF OCCUPATION	▽
ORDER-IN-COUNCIL	OC
RESERVATION	⊙
CANCELLED	⊘
SAND & GRAVEL	⊙

NOTE: MINING RIGHTS IN PARCELS PATENTED PRIOR TO MAY 6, 1912, VESTED IN ORIGINAL PATENTEES BY THE PUBLIC LANDS ACT, R.S.O. 1970, CHAP. 380, SEC. 63, SUBSEC. 1.

SCALE: 1 INCH = 40 CHAINS

FEET 0 1000 2000 4000 6000 8000  
METRES 0 200 1000 2000 4000 (2 KM)

**AREA**

**WEST OF GENTLES TWP.**

M.N.R. ADMINISTRATIVE DISTRICT  
MOOSONEE  
MINING DIVISION  
PORCUPINE  
LAND TITLES / REGISTRY DIVISION  
COCHRANE

Ministry of Natural Resources  
Land Management Branch

Date: JANUARY 1984  
Number: **G-1612**

G-1612 WEST OF GENTLES TWP G-1612

G-1612 WEST OF GENTLES TWP G-1612