

AREA
**WEST OF
 ZEEMEL LAKE**

DISTRICT OF
 KENORA
 (PATRICIA PORTION)

PATRICIA
 MINING DIVISION

SCALE: 1-INCH = 40 CHAINS

LEGEND

PATENTED LAND	Ⓟ
CROWN LAND SALE	C S
LEASES	Ⓛ
LOCATED LAND	Loc
LICENSE OF OCCUPATION	L.O.
MINING RIGHTS ONLY	M.R.O.
SURFACE RIGHTS ONLY	S.R.O.
ROADS	—
IMPROVED ROADS	—
KING'S HIGHWAYS	—
RAILWAYS	—
POWER LINES	—
MARSH OR MUSKEG	—
MINES	✕
CANCELLED	C

NOTES

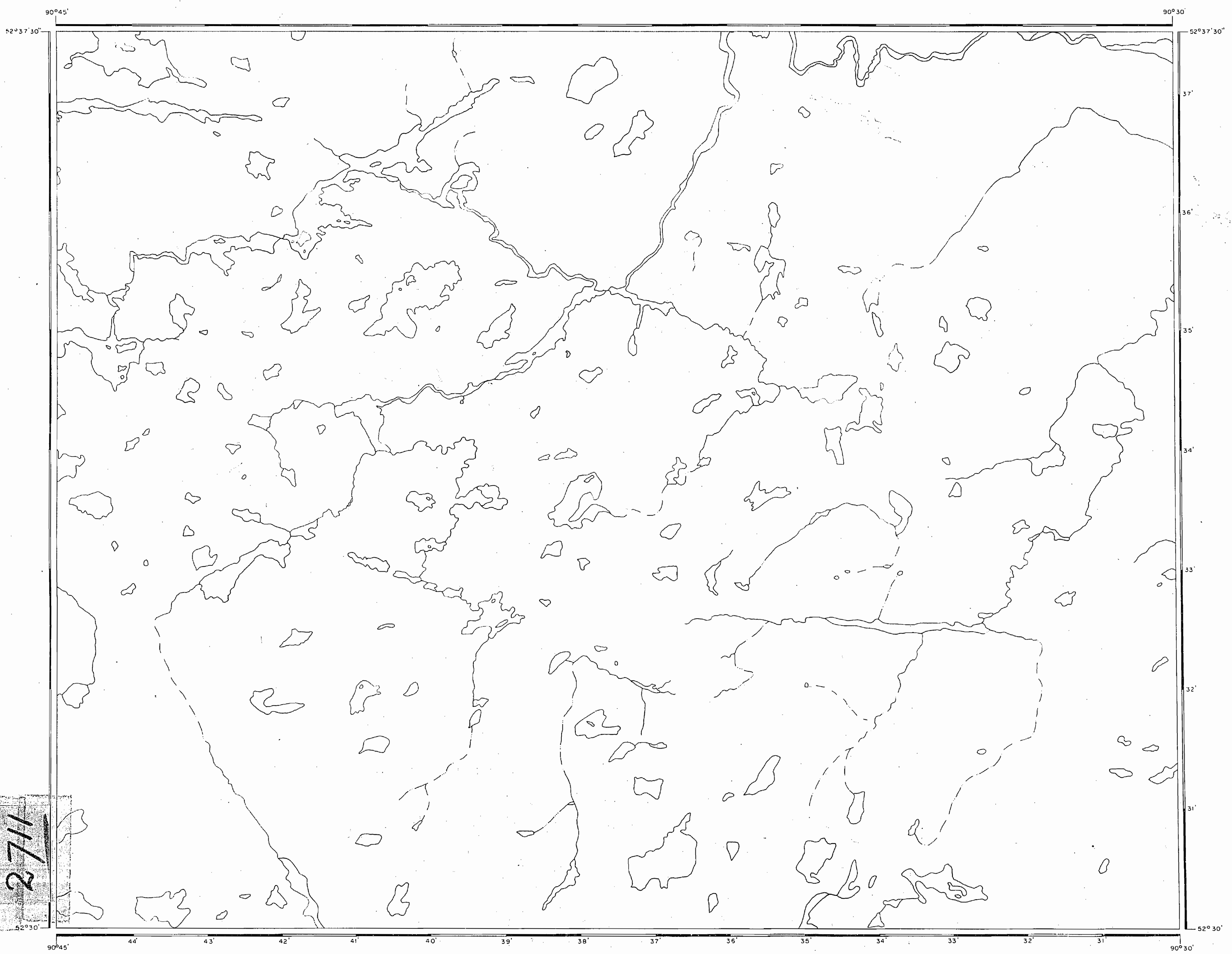
400' Reserve around all Lakes & Rivers to Dept
 of Lands & Forests

#1

6-2259

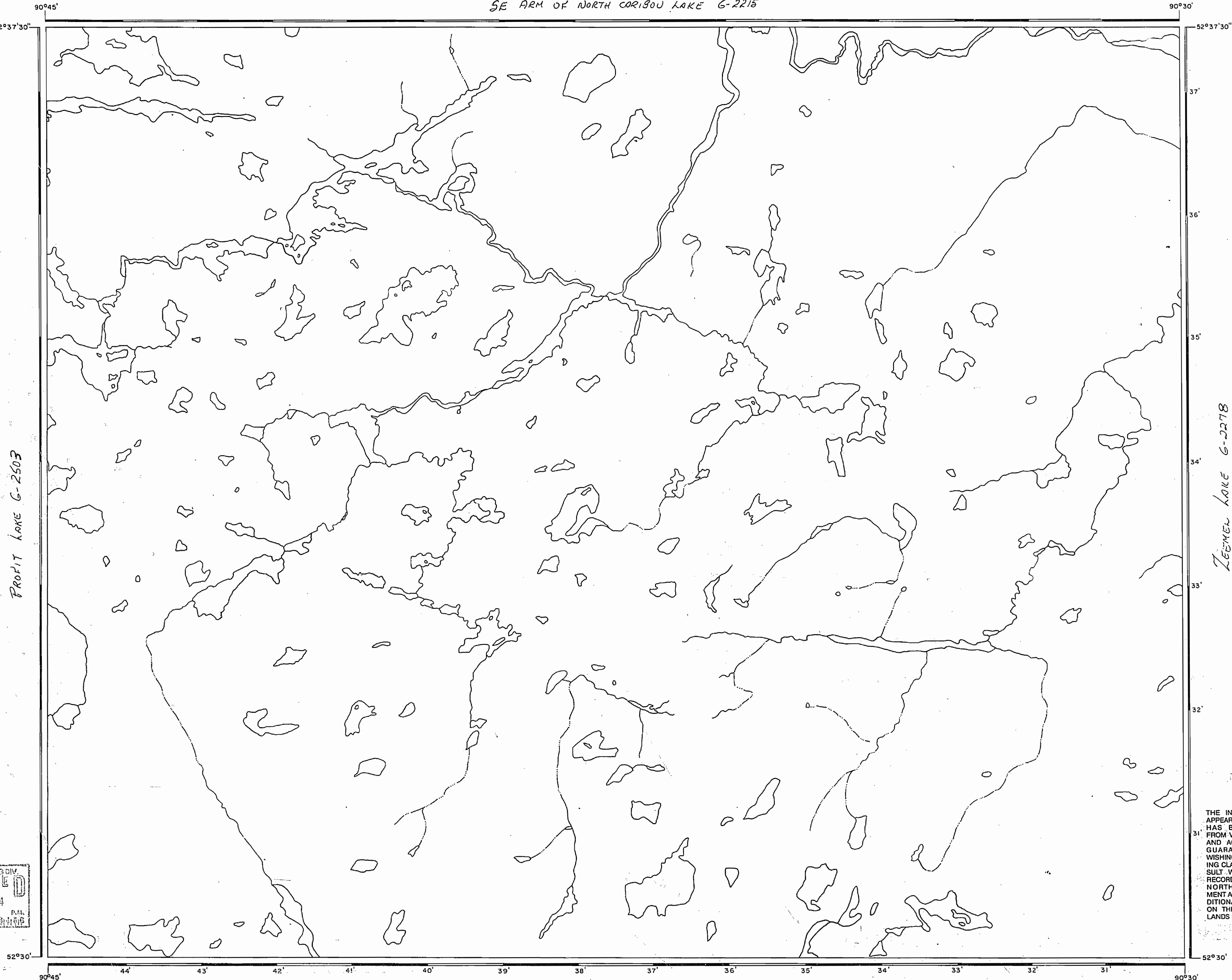
PLAN NO. M.2711

DEPARTMENT OF MINES
 — ONTARIO —



2711

SE ARM OF NORTH CORISOU LAKE G-2215



PROFIT LAKE G-2503

ZEEMEL LAKE G-2278

AREA NOT MAPPED

PATRICIA MINING DIV
RECEIVED
 MAY 16 1984
 A.S. 718 920 1139 1129 1106

LEGEND

HIGHWAY AND ROUTE No.	
OTHER ROADS	
TRAILS	
SURVEYED LINES:	
TOWNSHIPS, BASE LINES, ETC.	
LOTS, MINING CLAIMS, PARCELS, ETC.	
UNSURVEYED LINES:	
LOT LINES	
PARCEL BOUNDARY	
MINING CLAIMS ETC.	
RAILWAY AND RIGHT OF WAY	
UTILITY LINES	
NON-PERENNIAL STREAM	
FLOODING OR FLOODING RIGHTS	
SUBDIVISION OR COMPOSITE PLAN	
RESERVATIONS	
ORIGINAL SHORELINE	
MARSH OR MUSKEG	
MINES	
TRAVERSE MONUMENT	

DISPOSITION OF CROWN LANDS

TYPE OF DOCUMENT	SYMBOL
PATENT, SURFACE & MINING RIGHTS	
" SURFACE RIGHTS ONLY	
" MINING RIGHTS ONLY	
LEASE, SURFACE & MINING RIGHTS	
" SURFACE RIGHTS ONLY	
" MINING RIGHTS ONLY	
LICENCE OF OCCUPATION	
ORDER-IN-COUNCIL	
RESERVATION	
CANCELLED	
SAND & GRAVEL	

NOTE: MINING RIGHTS IN PARCELS PATENTED PRIOR TO MAY 6, 1913, VESTED IN ORIGINAL PATENTEE BY THE PUBLIC LANDS ACT, R.S.O. 1970, CHAP. 380, SEC. 63, SUBSEC. 1.

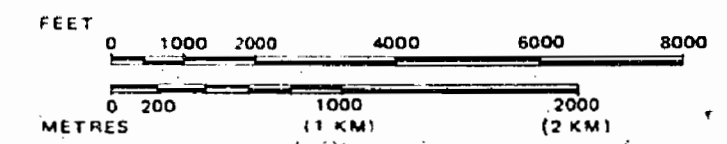
REFERENCES

AREAS WITHDRAWN FROM DISPOSITION

- M.R.O. - MINING RIGHTS ONLY
- S.R.O. - SURFACE RIGHTS ONLY
- M.+S. - MINING AND SURFACE RIGHTS

Description	Order No.	Date	Disposition	File
AREA IN WINDIGO TRIBAL COUNCIL PLANNING BOARD FOR DETAILS CALL 737-1585				

SCALE: 1 INCH = 40 CHAINS



THE INFORMATION THAT APPEARS ON THIS MAP HAS BEEN COMPILED FROM VARIOUS SOURCES, AND ACCURACY IS NOT GUARANTEED. THOSE WISHING TO STAKE MINING CLAIMS SHOULD CONSULT WITH THE MINING RECORDER, MINISTRY OF NORTHERN DEVELOPMENT AND MINES, FOR ADDITIONAL INFORMATION ON THE STATUS OF THE LANDS SHOWN HEREON.

AREA WEST OF ZEEMEL LAKE
 M.N.R. ADMINISTRATIVE DISTRICT
SIoux LOOKOUT
 MINING DIVISION
PATRICIA
 LAND TITLES / REGISTRY DIVISION
KENORA / (PATRICIA PORTION)

Ministry of Natural Resources
 Land Management Branch

Date: FEBRUARY, 1984. Number: **G-2259**