

M-319

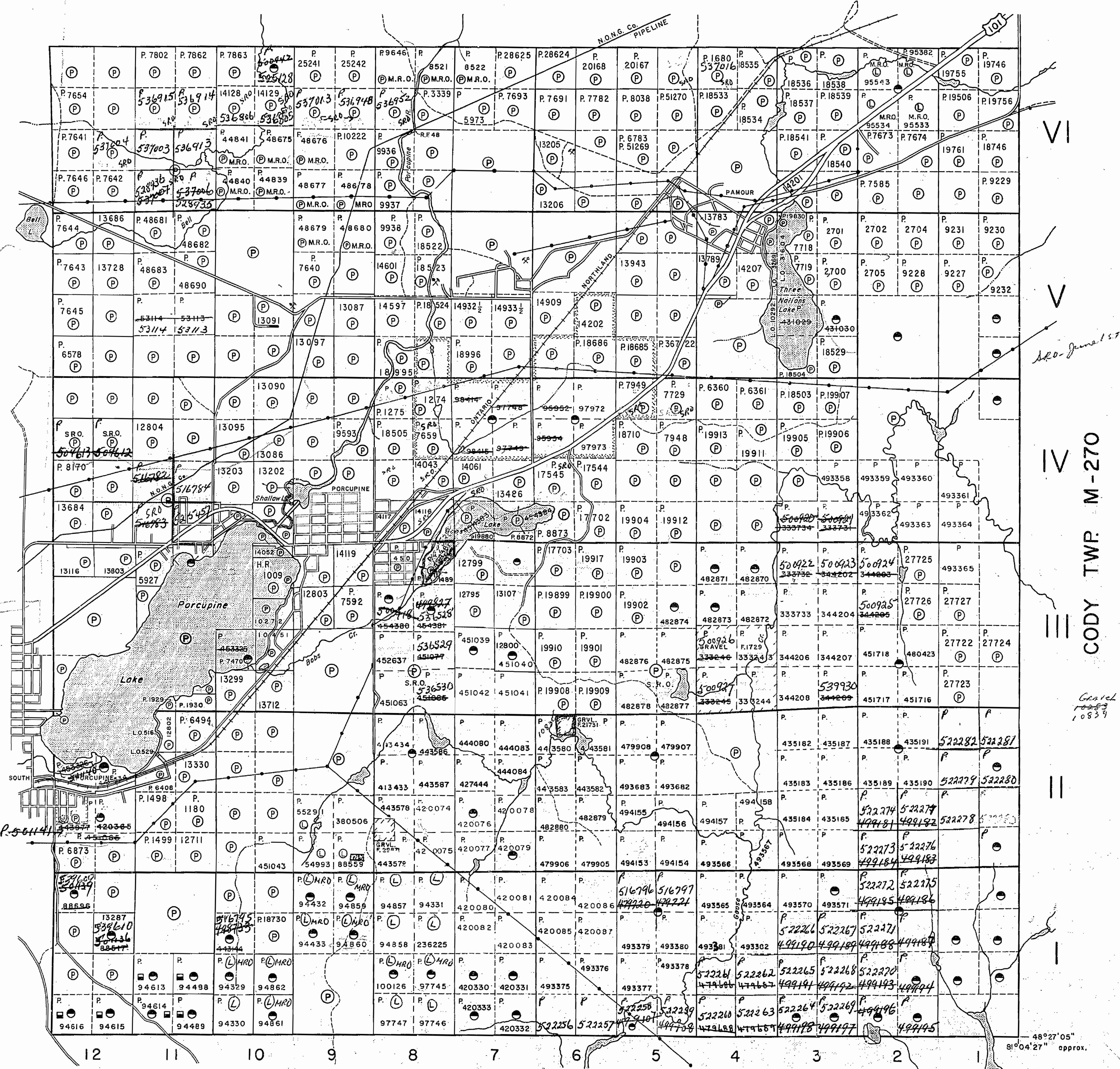
WHITNEY TWP

M-319

HOYLE TWP M-287

TISDALE TWP M-315

SHAW TWP M-311



THE TOWNSHIP
OF
WHITNEY

DISTRICT OF
COCHRANE

**PORCUPINE
MINING DIVISION**

SCALE: 1-INCH - 40 CHAINS

LEGEND

PATENTED LAND	(P)
CROWN LAND SALE	C.S.
LEASES	(L)
LOCATED LAND	Loc.
LICENSE OF OCCUPATION	L.O.
MINING RIGHTS ONLY	M.R.O.
SURFACE RIGHTS ONLY	S.R.O.
ROADS	(---)
IMPROVED ROADS	(=)
KING'S HIGHWAYS	(=)
RAILWAYS	(=)
POWER LINES	(=)
MARSH OR MUSKEG	(*)
MINES	(X)
CANCELLED	(C)
S.R.O. PATENTED	(P)
<i>M.R.O. 20950</i>	

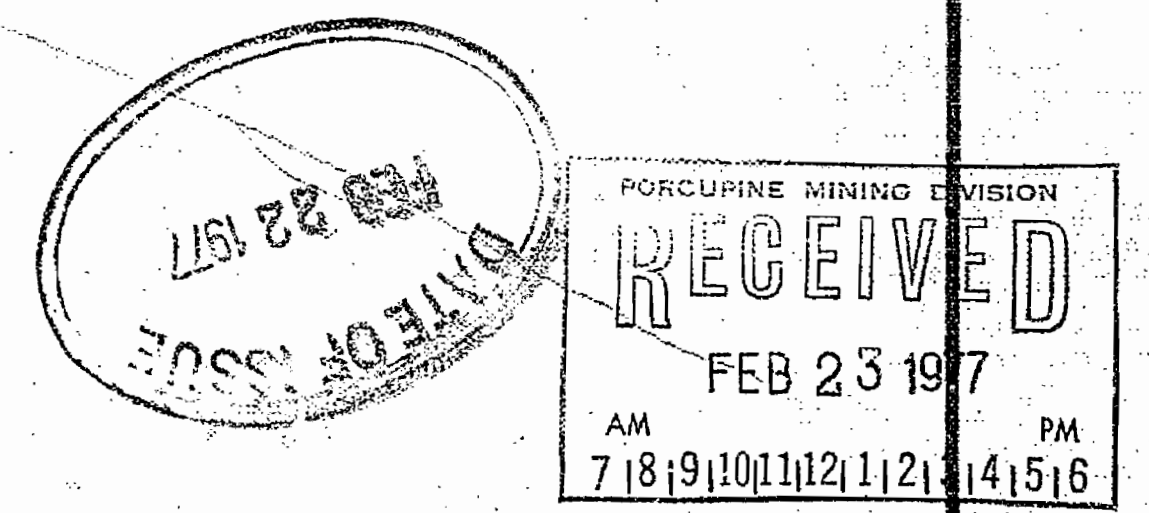
NOTES

400' Surface rights reservation along the shores of all lakes and rivers.

This township lies within the Municipality of CITY of TIMMINS.

No disposition of sand and gravel on lands north of O.N.Ry. from May 8, 1964 until further notice. Form. D.O.M. file 550.13

Any restakings within stippled area in Lots 5,6,7,8 Con. 4 and 5 subject to rights and privileges granted to Pamour Porcupine Mines Ltd. for tailings disposal.



ONTARIO
MINISTRY OF NATURAL RESOURCES
SURVEYS AND MAPPING BRANCH

Date 10th. JULY 1974(Rev.)
Whitney Block
Queen's Park, Toronto.

M-319

M-319
M-319
M-319
M-319

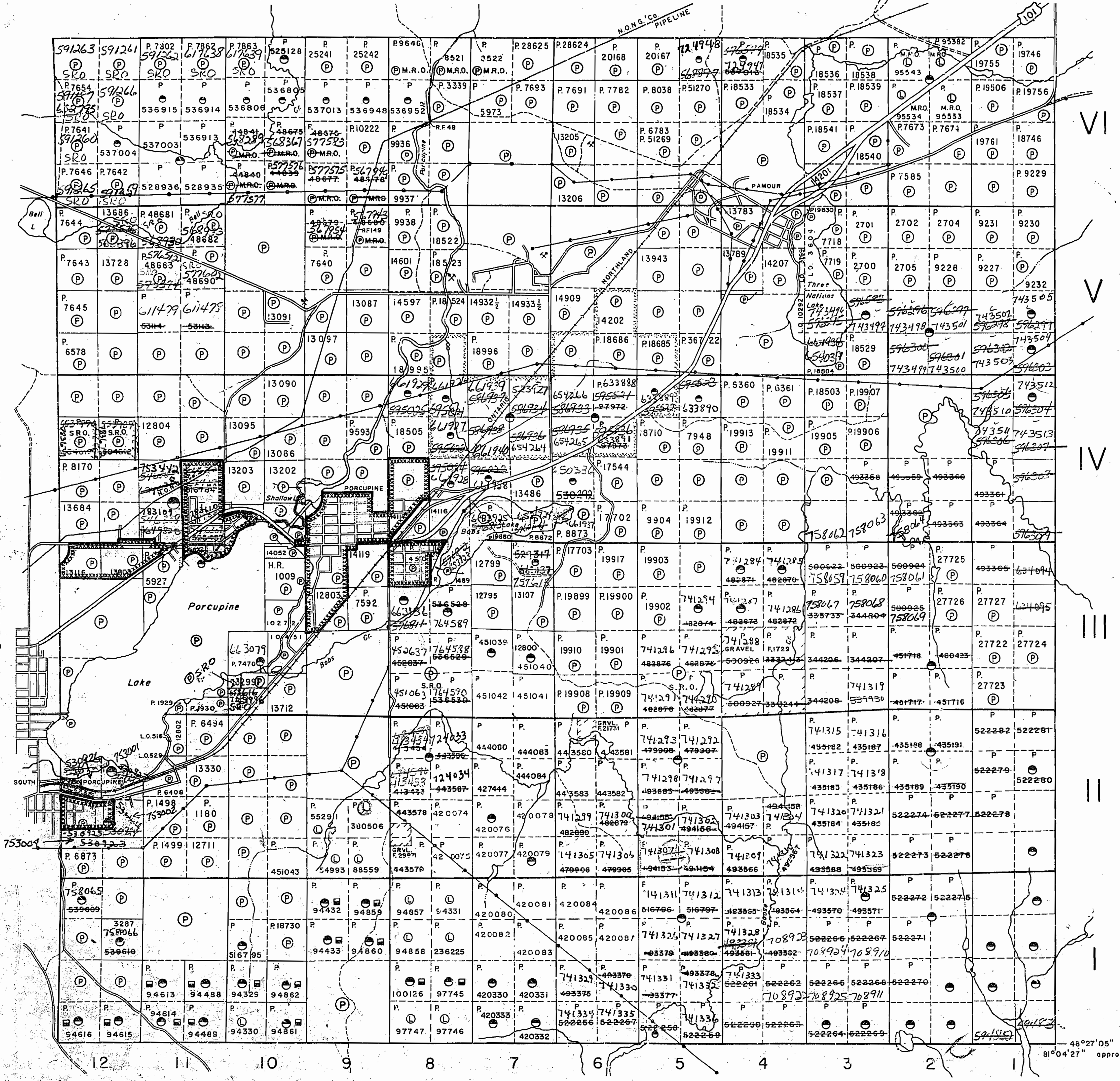
M-319
M-319
M-319
M-319

HOYLE TWP. M-287

TISDALE TWP. M-315

CODY TWP. M-270

SHAW TWP. M-311



THE TOWNSHIP
OF
WHITNEY
DISTRICT OF
COCHRANE
PORCUPINE
MINING DIVISION
SCALE: 1-INCH - 40 CHAINS

LEGEND

PATENTED LAND	(P)	C.S.
CROWN LAND SALE	(C)	L.O.
LEASES	(L)	M.R.O.
LOCATED LAND	(L)	S.R.O.
LICENSE OF OCCUPATION	(L.O.)	
MINING RIGHTS ONLY	(M.R.O.)	
SURFACE RIGHTS ONLY	(S.R.O.)	
ROADS	(R)	
IMPROVED ROADS	(IR)	
KING'S HIGHWAYS	(KH)	
RAILWAYS	(R)	
POWER LINES	(P.L.)	
MARSH OR MUSKOG	(M)	
MINES	(M)	
CANCELLED	(C)	
S.R.O. PATENTED	(S.P.)	
M.R.O. LEASED	(M.L.)	
REGISTERED PLAN OF SUBDIVISION	(R.P.S.)	

NOTES

400' Surface rights reservation along the shores of all lakes and rivers.

This township lies within the Municipality of CITY of TIMMINS.

No disposition of sand and gravel on lands north of O.N.Ry. from May 8, 1964 until further notice. Form. D.O.M. file 550.13

Any restakings within stippled area in Lots 5, 6, 7, 8 Con. 4 and 5 subject to rights and privileges granted to Pamour Porcupine Mines Ltd. for tailings disposal.

36 M.R.O. S.P. with diagram Respected Nov 29/82.

Received Oct 1/79

ONTARIO
MINISTRY OF NATURAL RESOURCES
SURVEYS AND MAPPING BRANCH

Date 10th JULY 1974 (Rev.)

Whitney Block
Queen's Park, Toronto

M.319

Removed & filed March 15/84

MAP SYMBOLOLOGY

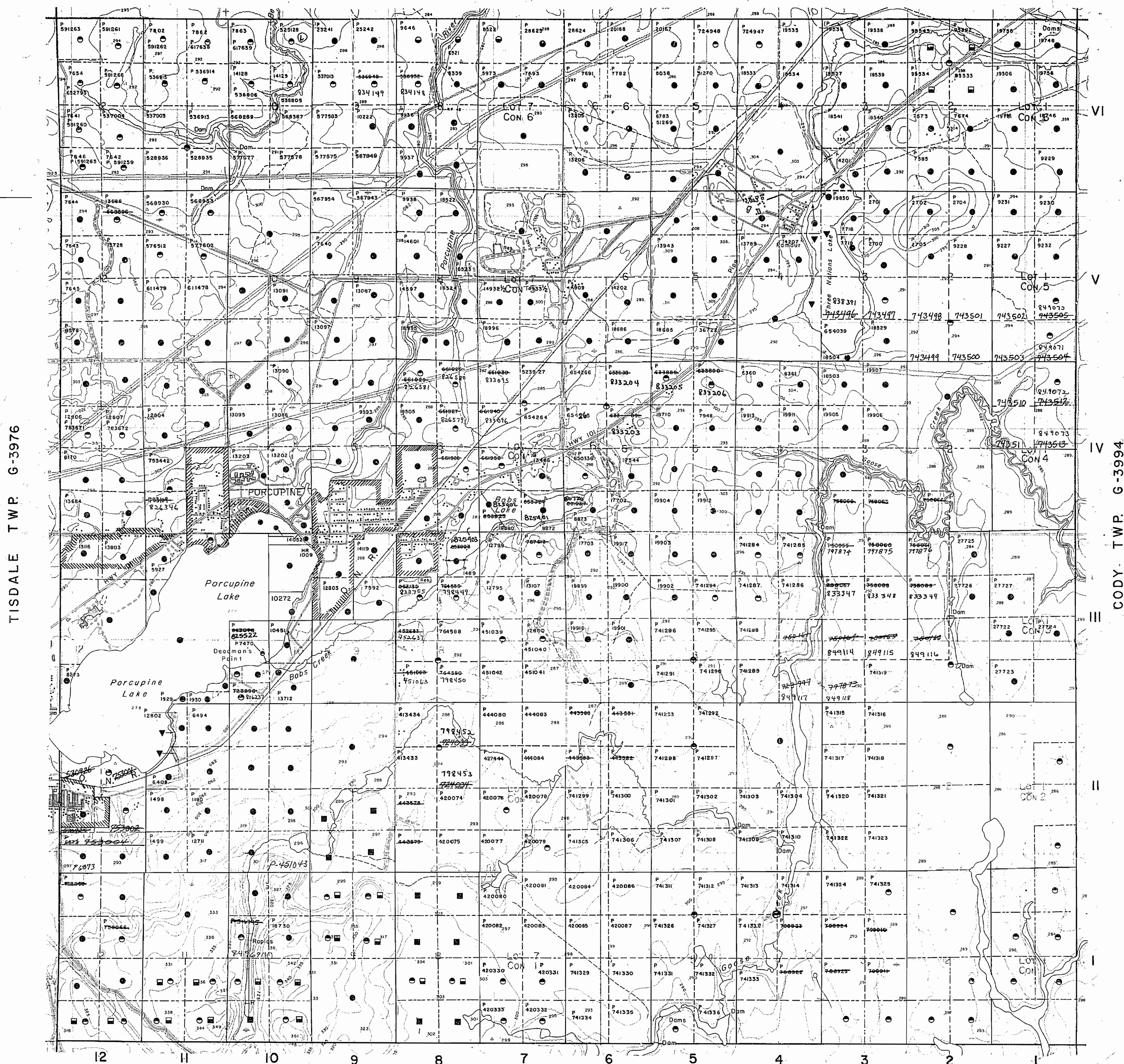
Aerial Cableway	Pipeline (above ground)
Boundary	Railroad
International	Single Track
Interprovincial	Double Track
District, Township Indian Reserve	Abandoned
Approximate	Terrace
Lot, Concession	Road
Approximate	Highway, County Township
Peak Boundary	Access Road of doubtful maintenance or significant driveway
Bridge	Trail, Back Road (Leisure, Utility)
Wood, Millrace	Reservoir
Building	River, Stream, Canal
Chimney	Approximate
Cliff, Pit, Pile	Section
Contours	Direction of flow
Intersected	Rock
Approximate	Significant
Depression	Spoil
Control Points	Spot Elevation (less than 300)
Horizontal	Tower
Vertical	Transmission Line
Culvert	Poles
Falls	Pylons
Double line river with multiple rapids	Tunnel
Double line river with multiple rapids	Utility Poles
Fence, Hedge, Wall	Wharf, Dock, Pier
Feature Outline (Construction features, etc.)	Wooded Area
Flooded Land	
Lock	
Marsh or Swamp	
Mast	
Mine Head Frame	
Outcrop	

AREAS WITHDRAWN FROM DISPOSITION

M.R.O. - MINING RIGHTS ONLY
 S.R.O. - SURFACE RIGHTS ONLY
 M.+S. - MINING AND SURFACE RIGHTS

Description	Order No.	Date	Disposition	File

HOYLE TWP. G-3987



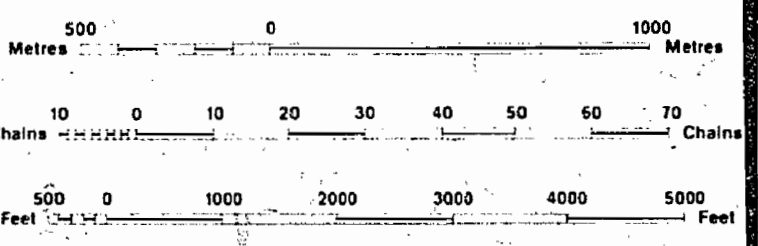
LEGEND

HIGHWAY AND ROUTE NO.	
OTHER ROADS	
TRAILS	
SURVEYED LINES:	
TOWNSHIPS, BASE LINES, ETC.	
LOTS, MINING CLAIMS, PARCELS, ETC.	
UNSURVEYED LINES:	
LOT LINES	
PARCEL BOUNDARY	
MINING CLAIMS ETC.	
RAILWAY AND RIGHT OF WAY	
UTILITY LINES	
NON-PERENNIAL STREAM	
FLOODING OR FLOODING RIGHTS	
SUBDIVISION OR COMPOSITE PLAN	
RESERVATIONS	
ORIGINAL SHORELINE	
MARSH OR MUSKOG	
MINES	
TRAVERSE MONUMENT	

DISPOSITION OF CROWN LANDS

TYPE OF DOCUMENT	SYMBOL
PATENT, SURFACE & MINING RIGHTS	
" SURFACE RIGHTS ONLY	
" MINING RIGHTS ONLY	
LEASE, SURFACE & MINING RIGHTS	
" SURFACE RIGHTS ONLY	
" MINING RIGHTS ONLY	
LICENCE OF OCCUPATION	
ORDER-IN-COUNCIL	
RESERVATION	
CANCELLED	
SAND & GRAVEL	

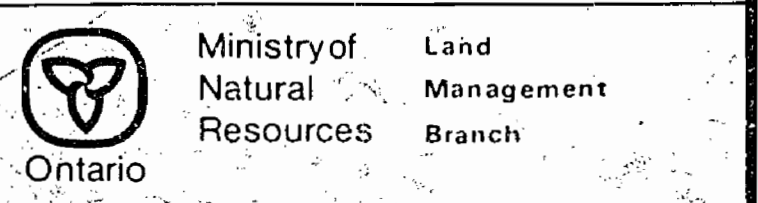
NOTE: MINING RIGHTS IN PARCELS PATENTED PRIOR TO MAY 6, 1913, VESTED IN ORIGINAL PATENTEE BY THE PUBLIC LANDS ACT, R.S.O. 1910, CHAP. 380, SEC. 63, SUBSEC. 1.



SCALE 1:20 000

NOTES

TOWNSHIP
WHITNEY
 M.N.R. ADMINISTRATIVE DISTRICT
TIMMINS
 MINING DIVISION
PORCUPINE
 LAND TITLES / REGISTRY DIVISION
COCHRANE



Date: FEBRUARY 1984
 Number: **G-3975**
 Received March 15/84

MAP SYMBOLOLOGY

Aerial Cableway	Pipeline (above ground)
Boundary	Railroad
International	Single Track
Interprovincial	Double Track
District, Township	Abandoned
Indian Reserve	Turbidity
Approximate	Road
Lot, Concession	Highway, County
Approximate	Tramway
Park Boundary	Access (road of doubtful maintenance or significant driveway)
Bridge	Trail, Open Road (single-way)
Road, Railroad	Rapids
Building	Double line river with multiple rapids
Chimney	Reservoir
Cliff, Pit, Pile	River, Stream, Canal
Contours	Approximate
Interpreted	Direction of flow
Approximate	Rock significant
Depression	Spit Elevation (base elevation)
Control Points	Tower
Horizontal	Transmission Line
Vertical	Pole
Culvert	Pyram
Falls	Tunnel
Double line river	Utility Poles
Fence, Hedge, Wall	Wharf, Dock, Pier
Feature Outline (Construction Features, etc.)	Wooded Area
Flooded Land	
Lock	
Marsh or Swamp	
Mast	
Mine Head Frame	
Outcrop	

AREAS WITHDRAWN FROM DISPOSITION

- M.R.O. - MINING RIGHTS ONLY
- S.R.O. - SURFACE RIGHTS ONLY
- M.S. - MINING AND SURFACE RIGHTS

Description	Order No.	Date	Disposition	File
-------------	-----------	------	-------------	------

APPLICATION PENDING UNDER PUBLIC LANDS ACT: SURFACE RIGHTS WITHDRAWN.

S.M. RIGHTS REOPENED FOR STAKING UNDER S.36 OF THE MINING ACT, R.S.O. 1980 - O.P. 2/80 NR. 90 JUN/84

NOTES

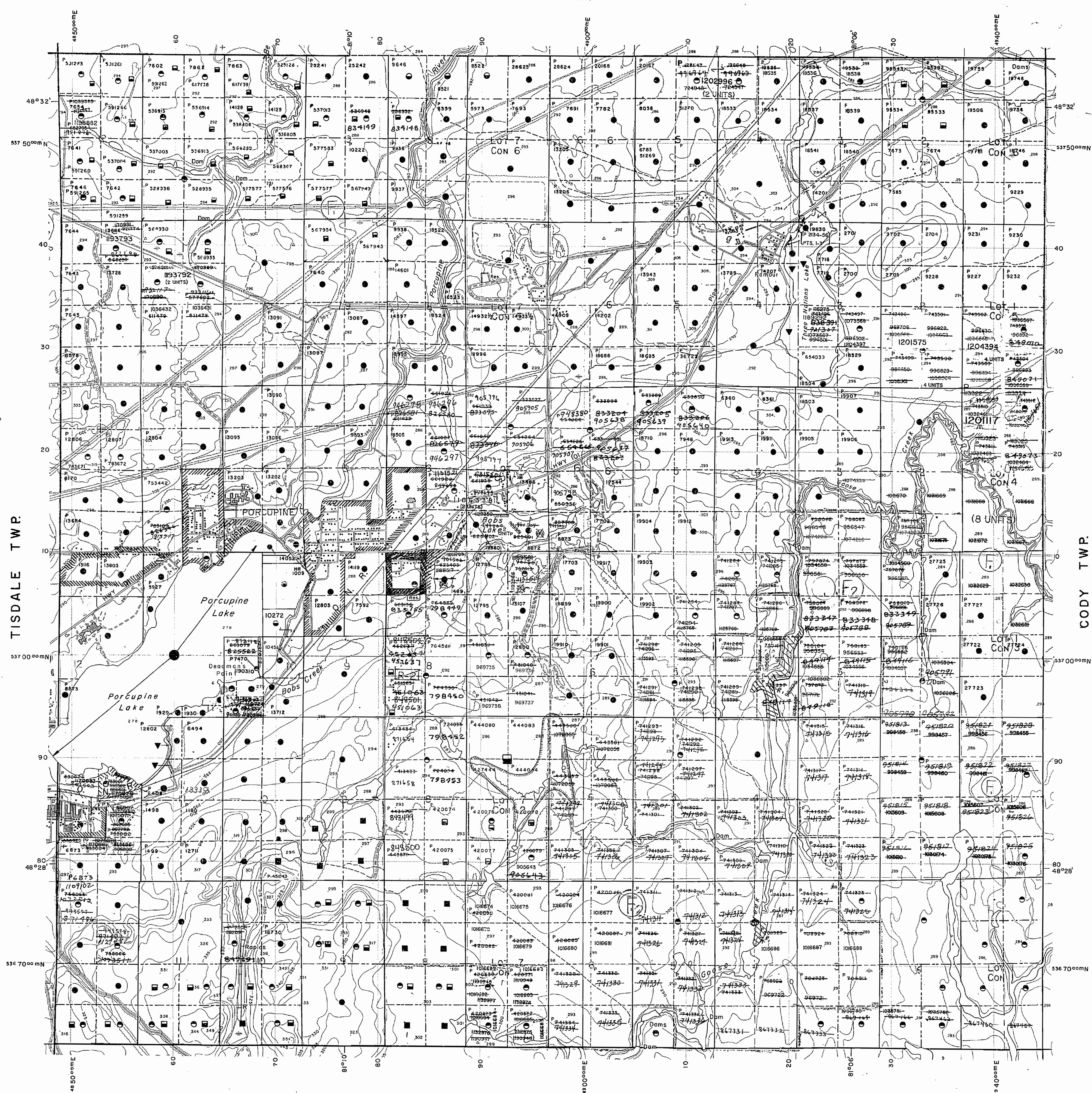
THIS TWP. IS SUBJECT TO FOREST ACTIVITIES IN 1990. FURTHER INFORMATION AVAILABLE ON FILE.

Mining Rights OPEN after obtaining Minister's Consent Section 29(b)

THIS TWP. IS SUBJECT TO FOREST ACTIVITY IN 1994/95. FURTHER INFORMATION AVAILABLE ON FILE.

THE INFORMATION THAT APPEARS ON THIS MAP HAS BEEN COMPILED FROM VARIOUS SOURCES, AND ACCURACY IS NOT GUARANTEED. THOSE WISHING TO STAKE MINING CLAIMS SHOULD CONSULT WITH THE MINING RECORDER, MINISTRY OF NORTHERN DEVELOPMENT AND MINES, FOR ADDITIONAL INFORMATION ON THE STATUS OF THE LANDS SHOWN HEREON.

HOYLE TWP.



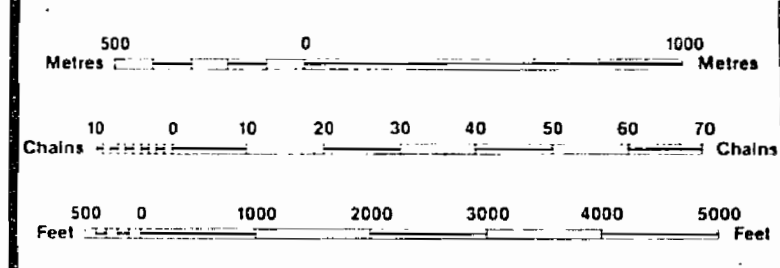
LEGEND

HIGHWAY AND ROUTE No.	
OTHER ROADS	
TRAILS	
SURVEYED LINES: TOWNSHIPS, BASE LINES, ETC.	
LOTS, MINING CLAIMS, PARCELS, ETC.	
UNSURVEYED LINES: LOT LINES	
PARCEL BOUNDARY	
MINING CLAIMS ETC.	
RAILWAY AND RIGHT OF WAY	
UTILITY LINES	
NON-PERENNIAL STREAM	
FLOODING OR FLOODING RIGHTS	
SUBDIVISION OR COMPOSITE PLAN	
RESERVATIONS	
ORIGINAL SHORELINE	
MARSH OR MUSKIEG	
MINES	
TRAVERSE MONUMENT	

DISPOSITION OF CROWN LANDS

TYPE OF DOCUMENT	SYMBOL
PATENT, SURFACE & MINING RIGHTS	●
" SURFACE RIGHTS ONLY	○
" MINING RIGHTS ONLY	◐
LEASE, SURFACE & MINING RIGHTS	◑
" SURFACE RIGHTS ONLY	◒
" MINING RIGHTS ONLY	◓
LICENCE OF OCCUPATION	◔
ORDER-IN-COUNCIL	OC
RESERVATION	⊙
CANCELLED	⊖
SAND & GRAVEL	⊗

NOTE: MINING RIGHTS IN PARCELS PATENTED PRIOR TO MAY 6, 1913, VESTED IN ORIGINAL PATENTEES BY THE PUBLIC LANDS ACT, R.S.O. 1970, CHAP. 380, SEC. 63, SUBSEC. 1.



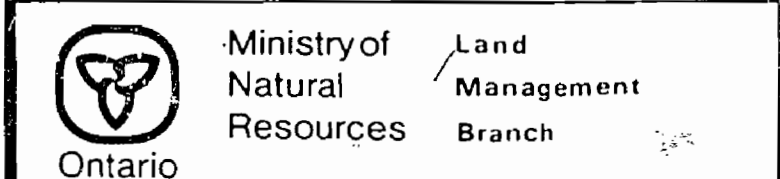
Note: Flooding rights reserved to the crown. - DUCKS UNLIMITED - SEE LANDS ROLL FILE

MINING AND SURFACE RIGHTS WITHDRAWN FROM PROSPECTING, STAKING, SALE OR LEASE. SECTION 36 OF THE MINING ACT (R.S.O. 1980) WITHDRAWN ORDER NO. 135/87 T.M.L.

S & M RIGHTS REOPENED UNDER SECTION 36 OF THE MINING ACT, R.S.O. 1980 O-46/86HR

REPLACED JULY 26, 1994 BY D.C.

TOWNSHIP
WHITNEY
M.N.R. ADMINISTRATIVE DISTRICT
TIMMINS
MINING DIVISION
PORCUPINE
LAND TITLES / REGISTRY DIVISION
COCHRANE



ORIGINAL COMPILED JULY 1984
REVISED:
Number
G-3975

SHAW TWP.

MAP SYMBOLOLOGY

Aerial Cableway	Boundary	Pipeline	Access (road of doubtful maintenance or significant driveway)
International	Boundary	Railroad	Double line river with multiple rapids
Interprovincial	Boundary	Single Track	Double line river with multiple rapids
Delect, Township	Boundary	Double Track	Reservoir
Indian Reserve	Boundary	Abandoned	River, Stream, Canal
Approximate	Boundary	Turnable	Approximate
Lot, Concession	Boundary	Road	Direction of Flow
Approximate	Boundary	Highway, County	Rock
Parcel Boundary	Boundary	Trail Bush Road (Portage, Alley)	Significant
Bridge	Boundary	Rapids	Shoal
Road, Railroad	Boundary	Double line river with multiple rapids	Transmission Line
Chimney	Boundary	Double line river with multiple rapids	Power Lines
Oil, Pit, Pile	Boundary	Reservoir	Utility Poles
Contours	Boundary	River, Stream, Canal	Wharf, Dock, Pier
Interpolated	Boundary	Approximate	Wooded Area
Approximate	Boundary	Direction of Flow	
Control Points	Boundary	Rock	
Horizontal	Boundary	Significant	
Vertical	Boundary	Shoal	
Culvert	Boundary	Transmission Line	
Falls	Boundary	Power Lines	
Double Line River	Boundary	Utility Poles	
Fence, Hedge, Wall	Boundary	Wharf, Dock, Pier	
Feature Outline (Construction Features, etc.)	Boundary	Wooded Area	
Flooded Land	Boundary		
Lock	Boundary		
Marsh or Swamp	Boundary		
Moat	Boundary		
Mine Head Frame	Boundary		
Outcrop	Boundary		

AREAS WITHDRAWN FROM DISPOSITION

- M.R.O. - MINING RIGHTS ONLY
- S.R.O. - SURFACE RIGHTS ONLY
- M.+S. - MINING AND SURFACE RIGHTS

Description	Order No.	Date	Disposition	File
APPLICATION PENDING UNDER PUBLIC LANDS ACT				
SURFACE RIGHTS WITHDRAWN				

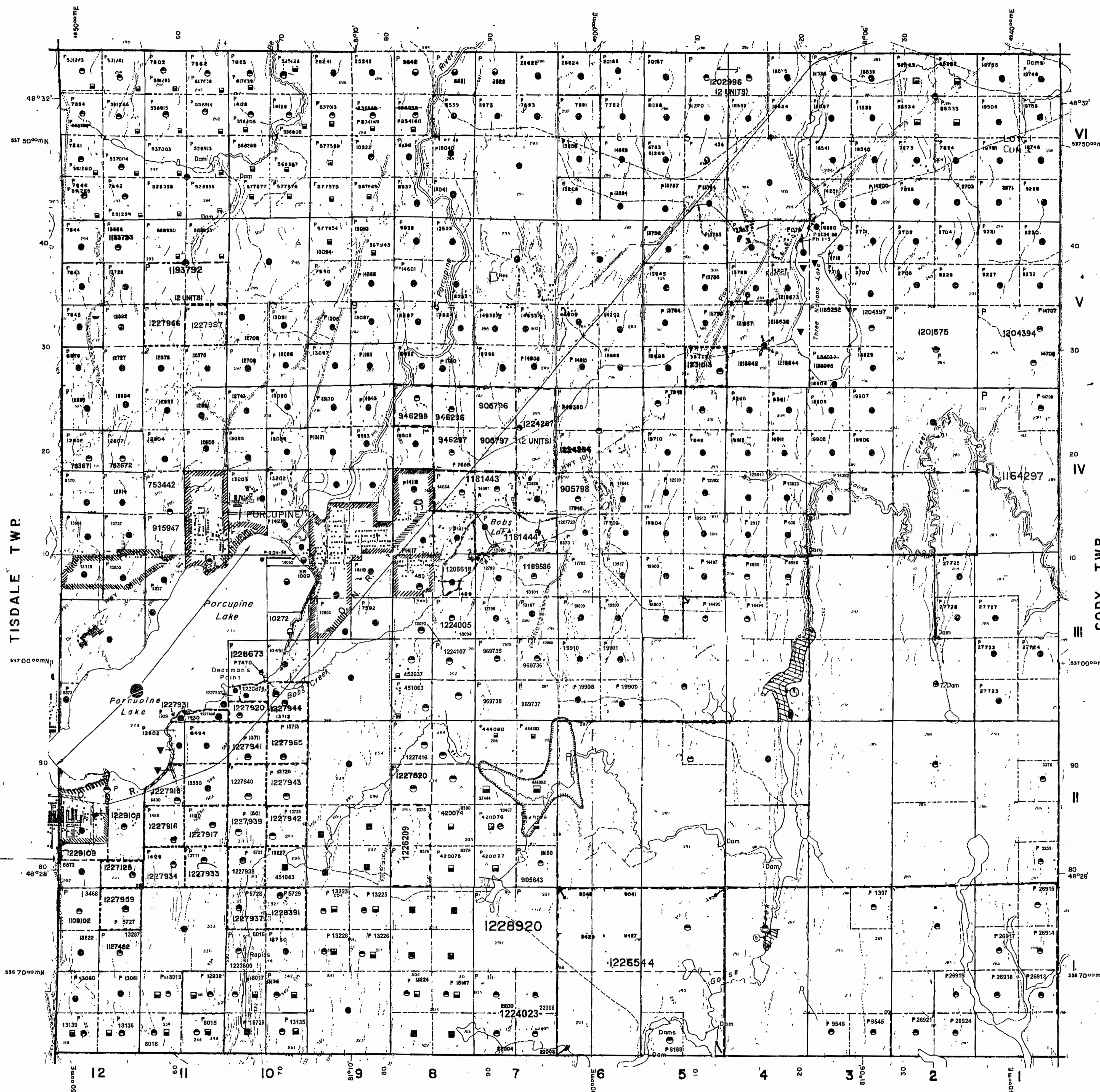
THIS TWP IS SUBJECT TO FOREST ACTIVITIES IN 1994/95 FURTHER INFORMATION AVAILABLE ON FILE.

NOTE:

BOUNDARY CHANGED SEPT. 23, 1994 AS PER G. SHERMAN

THE INFORMATION THAT APPEARS ON THIS MAP HAS BEEN COMPILED FROM VARIOUS SOURCES, AND ACCURACY IS NOT GUARANTEED. THOSE WISHING TO STAKE MINING CLAIMS SHOULD CONSULT WITH THE MINING RECORDER, MINISTRY OF NORTHERN DEVELOPMENT AND MINES, FOR ADDITIONAL INFORMATION ON THE STATUS OF THE LANDS SHOWN HEREON.

HOYLE TWP



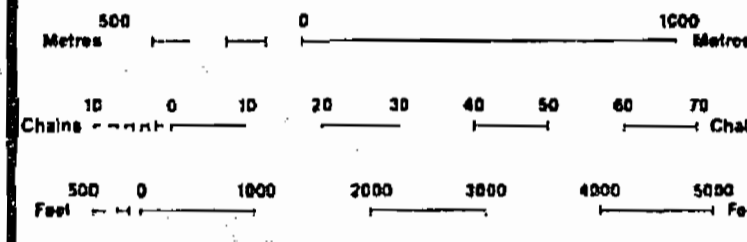
LEGEND

HIGHWAY AND ROUTE No	
OTHER ROADS	
TRAILS	
SURVEYED LINES	
TOWNSHIPS, BASE LINES, ETC	
LOTS, MINING CLAIMS, PARCELS, ETC	
UNSURVEYED LINES	
LOT LINES	
PARCEL BOUNDARY	
MINING CLAIMS ETC	
RAILWAY AND RIGHT OF WAY	
UTILITY LINES	
NON PERENNIAL STREAM	
FLOODING OR FLOODING RIGHTS	
SUBDIVISION OR COMPOSITE PLAN	
RESERVATIONS	
ORIGINAL SHORELINE	
MARSH OR MUSKEG	
MINES	
TRAVERSE MONUMENT	

DISPOSITION OF CROWN LANDS

TYPE OF DOCUMENT	SYMBOL
PATENT, SURFACE & MINING RIGHTS	●
" SURFACE RIGHTS ONLY	○
" MINING RIGHTS ONLY	◐
LEASE, SURFACE & MINING RIGHTS	◑
" SURFACE RIGHTS ONLY	◒
" MINING RIGHTS ONLY	◓
LICENCE OF OCCUPATION	○
ORDER-IN-COUNCIL	OC
RESERVATION	○
CANCELLED	○
SAND & GRAVEL	○

NOTE: MINING RIGHTS IN PARCELS PATENTED PRIOR TO MAY 6, 1913, VESTED IN ORIGINAL PATENTEE BY THE PUBLIC LANDS ACT, R.S.O. 1970, CHAP. 380, SEC. 63 SUBSEC. 1.



SCALE 1:20 000
GRID ZONE: 17

FLOODING RIGHTS RESERVED TO THE CROWN - DUCKS UNLIMITED - SEE LAND ROLL FILE.

TOWNSHIP
WHITNEY
M + R ADMINISTRATIVE DISTRICT
TIMMINS
MINING DIVISION
PORCUPINE
LAND TITLES / REGISTRY DIVISION
COCHRANE

Ministry of Natural Resources
Land Management Branch
Ontario

ORIGINAL COMPILATION JULY 1984
CHECKED BY:
REVISED BY:
ACTIVATED BY: D.C. - JULY 28, 1994
Number: **G-3975**

MAP SYMBOLOGY

Aerial Cableway	Pipeline
Boundary	Railroad
International	State Road
Intra-provincial	County Road
Road	Abandoned
Approximate	Tunnel
U.S. Commission	Receiver
Power Lines	River, Stream, Canal
Bridge	Lower
Road Building	Transmitter Line
Canals	Power
Control Points	Utility Pole
Culvert	Wharf, Dock, Pier
Pile	Warehouse Area
Fenced Area	
Merit or Swamp	
Mine Head Frame	
Outcrop	

AREAS WITHDRAWN FROM DISPOSITION

M.R.O. - MINING RIGHTS ONLY
 S.R.O. - SURFACE RIGHTS ONLY
 M.-S. - MINING AND SURFACE RIGHTS

Disposition Order No. Date Disposition File

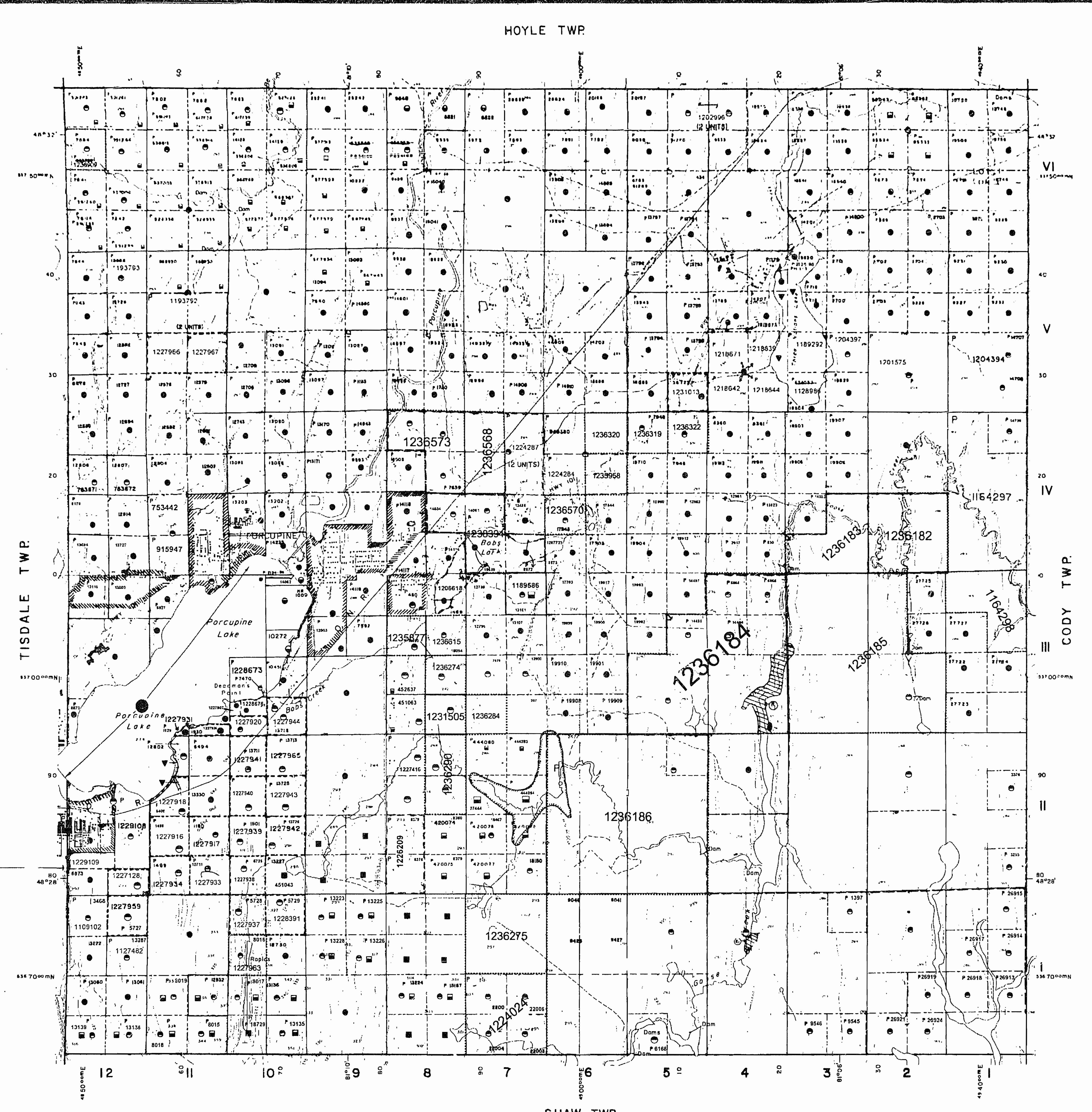
APPLICATION PENDING UNDER PUBLIC LANDS ACT SURFACE RIGHTS WITHDRAWN

NOTE:

BOUNDARY CHANGED SEPT. 23, 1994 AS PER G. SHERMAN

THIS TWP. IS SUBJECT TO FOREST ACTIVITY IN 1994/95 FURTHER INFORMATION AVAILABLE ON FILE.

THE INFORMATION THAT APPEARS ON THIS MAP HAS BEEN COMPILED FROM VARIOUS SOURCES, AND ACCURACY IS NOT GUARANTEED. THOSE WISHING TO STAKE MINING CLAIMS SHOULD CONSULT WITH THE MINING RECORDER, MINISTRY OF NORTHERN DEVELOPMENT AND MINES, FOR ADDITIONAL INFORMATION ON THE STATUS OF THE LANDS SHOWN HEREON.



LEGEND

HIGHWAY AND ROUTE No
 OTHER ROADS
 TRAILS
 SURVEYED LINES
 TOWNSHIPS, BASE LINES ETC.
 LOTS, MINING CLAIMS, PARCELS ETC.
 UNSURVEYED LINES
 LOT LINES
 PARCEL BOUNDARY
 MINING CLAIMS ETC.
 RAILWAY AND RIGHT OF WAY
 UTILITY LINES
 NON PERENNIAL STREAM
 FLOODING OR FLOODING RIGHTS
 RESERVATION OR COMPOSITE PLAN
 ORIGINAL SHORELINE
 MARSH OR MUSKELINE
 MINES
 TRAVERSE MONUMENT

DISPOSITION OF CROWN LANDS

TYPE OF DOCUMENT	SYMBOL
PATENT SURFACE & MINING RIGHTS	●
SURFACE RIGHTS ONLY	○
MINING RIGHTS ONLY	⊙
LEASE SURFACE & MINING RIGHTS	◻
SURFACE RIGHTS ONLY	□
MINING RIGHTS ONLY	◐
LICENCE OF OCCUPATION	◑
ORDER IN COUNCIL	OC
RESERVATION	○
CANCELLED	○
SAND & GRAVEL	○

NOTE: MINING RIGHTS IN PARCELS PATENTED PRIOR TO MAY 8 1912 VESTED IN ORIGINAL PATENTEES BY THE PUBLIC LANDS ACT R.S.O. 1910 CHAP. 350 SEC. 67 SUBSEC. 1

SCALE 1:20 000
 GRID ZONE: 17

FLOODING RIGHTS RESERVED TO THE CROWN - DUCKS UNLIMITED - SEE LAND ROLL FILE.

TOWNSHIP
WHITNEY
 M.N.R. ADMINISTRATIVE DISTRICT
TIMMINS
 MINING DIVISION
PORCUPINE
 LAND TITLES / REGISTRY DIVISION
COCHRANE

Ministry of Natural Resources
 Land Management Branch
 Ontario

ORIGINAL COMPILED BY: JULY 1984
 CHECKED BY:
 REVISED:
 ACTIVATED BY: D.C. - JULY 26, 1994

Number: **G-3975**

MAP SYMBOLOLOGY

Aerial Cableway	Pipeline (above ground)
Boundary	Railroad
International	Single Track
Intrajurisdictional	Double Track
District, Township	Abandonment
Indian Reserve	Turbidity
Approximate	Road
Lot, Concession	Highway, County
Approximate	Township
Park Boundary	Access (road of doubtful maintenance or unimproved driveway)
Bridge	Abandonment
Road, Railroad	Road
Building	*Rail, Bush Road (barriage sites)
Chimney	Rapids
Cliff, Pit, Pile	Double line river with multiple rapids
Contours	Double line river with multiple rapids
Interpreted	Reservoir
Approximate	River, Stream, Canal
Depression	Approximate
Control Points	Approximate
Horizontal	Approximate
Vertical	Approximate
Culvert	Approximate
Falls	Approximate
Double line river	Approximate
Fence, Hedge, Wall	Approximate
Feature Outline (Construction Features, etc.)	Approximate
Flooded Land	Approximate
Lock	Approximate
Marsh or Swamp	Approximate
Mast	Approximate
Mine Head Frame	Approximate
Outcrop	Approximate

AREAS WITHDRAWN FROM DISPOSITION

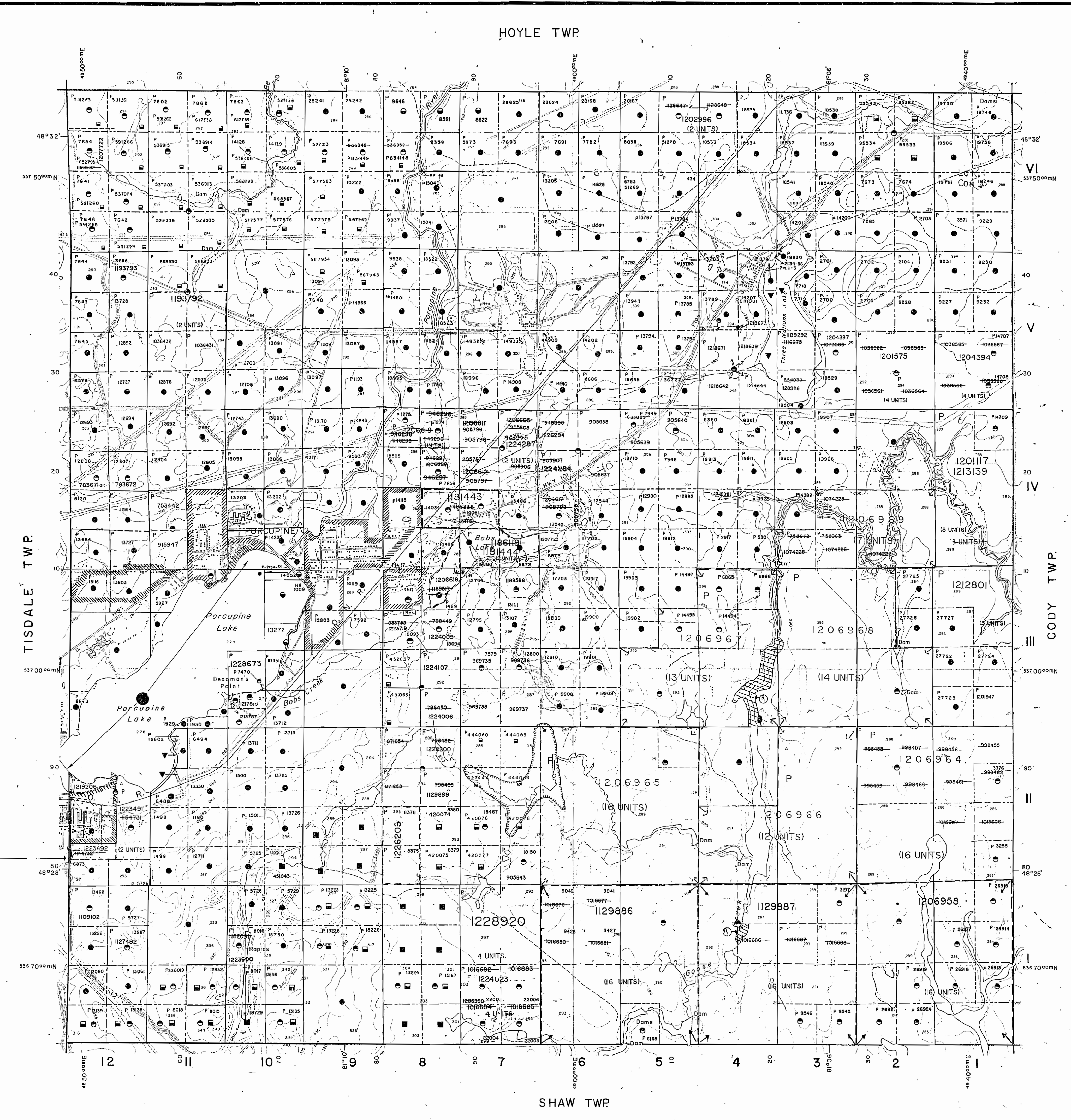
M.R.O. - MINING RIGHTS ONLY				
S.R.O. - SURFACE RIGHTS ONLY				
M.+S. - MINING AND SURFACE RIGHTS				
Description	Order No.	Date	Disposition	File
APPLICATION PENDING UNDER PUBLIC LANDS ACT SURFACE RIGHTS WITHDRAWN				

THIS TWP. IS SUBJECT TO FOREST ACTIVITY IN 1994/95 FURTHER INFORMATION AVAILABLE ON FILE.

NOTE:

BOUNDARY CHANGED SEPT. 23, 1994 AS PER G. SHERMAN

THE INFORMATION THAT APPEARS ON THIS MAP HAS BEEN COMPILED FROM VARIOUS SOURCES, AND ACCURACY IS NOT GUARANTEED. THOSE WISHING TO STAKE MINING CLAIMS SHOULD CONSULT WITH THE MINING RECORDER, MINISTRY OF NORTHERN DEVELOPMENT AND MINES, FOR ADDITIONAL INFORMATION ON THE STATUS OF THE LANDS SHOWN HEREON.



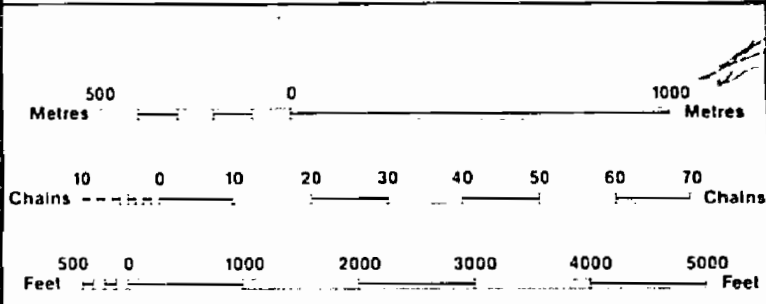
LEGEND

HIGHWAY AND ROUTE No.	[Symbol]
OTHER ROADS	[Symbol]
TRAILS	[Symbol]
SURVEYED LINES:	[Symbol]
TOWNSHIPS, BASE LINES, ETC.	[Symbol]
LOTS, MINING CLAIMS, PARCELS, ETC.	[Symbol]
UNSURVEYED LINES:	[Symbol]
LOT LINES	[Symbol]
PARCEL BOUNDARY	[Symbol]
MINING CLAIMS ETC.	[Symbol]
RAILWAY AND RIGHT OF WAY	[Symbol]
UTILITY LINES	[Symbol]
NON-PERENNIAL STREAM	[Symbol]
FLOODING OR FLOODING RIGHTS	[Symbol]
SUBDIVISION OR COMPOSITE PLAN	[Symbol]
RESERVATIONS	[Symbol]
ORIGINAL SHOULDER	[Symbol]
MARSH OR MUSKELINE	[Symbol]
MINES	[Symbol]
TRAVERSE MONUMENT	[Symbol]

DISPOSITION OF CROWN LANDS

TYPE OF DOCUMENT	SYMBOL
PATENT, SURFACE & MINING RIGHTS	[Symbol]
" SURFACE RIGHTS ONLY	[Symbol]
" MINING RIGHTS ONLY	[Symbol]
LEASE, SURFACE & MINING RIGHTS	[Symbol]
" SURFACE RIGHTS ONLY	[Symbol]
" MINING RIGHTS ONLY	[Symbol]
LICENCE OF OCCUPATION	[Symbol]
ORDER-IN-COUNCIL	[Symbol]
RESERVATION	[Symbol]
CANCELLED	[Symbol]
SAND & GRAVEL	[Symbol]

NOTE: MINING RIGHTS IN PARCELS PATENTED PRIOR TO MAY 6, 1913, VESTED IN ORIGINAL PATENTEE BY THE PUBLIC LANDS ACT, R.S.O. 1970, CHAP. 380, SEC. 63, SUBSEC. 1.



SCALE 1:20 000
 GRID ZONE: 17

FLOODING RIGHTS RESERVED TO THE CROWN.
 - DUCKS UNLIMITED - SEE LAND ROLL FILE.

DATE OF ISSUE
 DEC 0 3 1997
 PROVINCIAL RECORDING
 OFFICE - SUDBURY

TOWNSHIP
WHITNEY
 M.N.R. ADMINISTRATIVE DISTRICT
TIMMINS
 MINING DIVISION
PORCUPINE
 LAND TITLES / REGISTRY DIVISION
COCHRANE

Ministry of Natural Resources
 Land Management Branch
 Ontario

ORIGINAL COMPILED JULY 1984
 CHECKED BY:
 REVISED:
 ACTIVATED BY: G.C. - JULY 26, 1994

Number
G-3975

MAP SYMBOLOLOGY

Aerial Cableway	Pipeline (above ground)
Boundary	Railroad
International	Single Track
Interprovincial	Double Track
District, Township	Abandoned
Indian Reserve	Turntable
Approach	Road
Lot, Concession	Highway, County
Approach	Township
Parc Boundary	Access (road of doubtful maintenance or significant driveway)
Bridge	Traffic, Bush Road (portage, alley)
Road, Railroad	Rapids
Building	Double line river with multiple rapids
Chimney	Double line river with multiple rapids
Cliff, Pit, Pile	Reservoir
Contours	River, Stream, Canal
Interpolated	Approximate
Approximate	Approximate
Depression	Approximate
Control Points	Approximate
Horizontal	Approximate
Vertical	Approximate
Culvert	Approximate
Falls	Approximate
Double line river	Approximate
Fence, Hedge, Wall	Approximate
Feature Outline (Construction features, etc.)	Approximate
Flooded Land	Approximate
Lock	Approximate
Marsh or Swamp	Approximate
Mud	Approximate
Mine Head Frame	Approximate
Outcrop	Approximate

AREAS WITHDRAWN FROM DISPOSITION

- M.R.O. - MINING RIGHTS ONLY
- S.R.O. - SURFACE RIGHTS ONLY
- M.S. - MINING AND SURFACE RIGHTS

Description	Order No.	Date	Disposition	File

APPLICATION PENDING UNDER PUBLIC LANDS ACT SURFACE RIGHTS WITHDRAWN

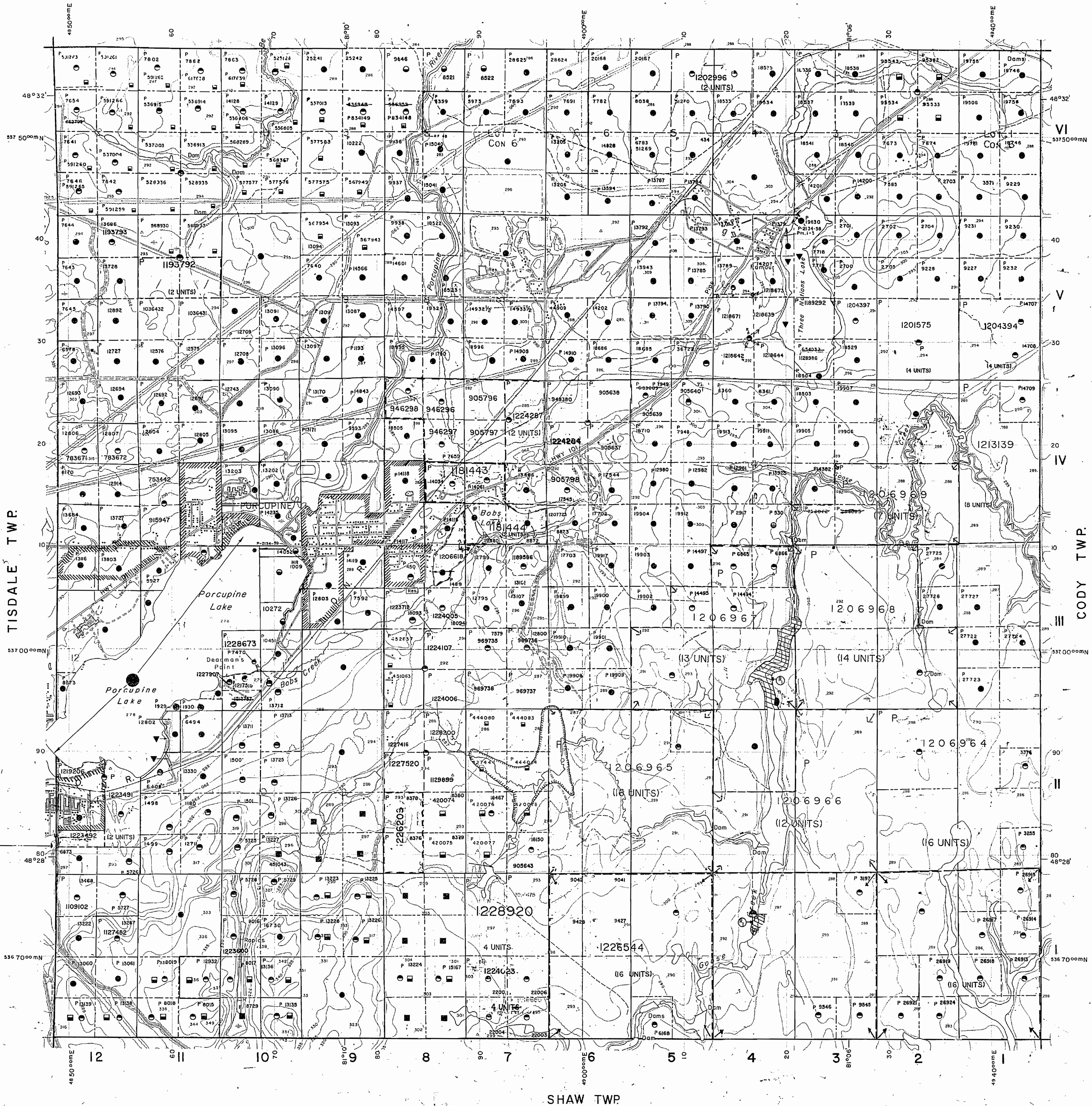
THIS TWP. IS SUBJECT TO FOREST ACTIVITY IN 1994/95 FURTHER INFORMATION AVAILABLE ON FILE.

NOTE:

BOUNDARY CHANGED SEPT. 23, 1994 AS PER G. SHERMAN

THE INFORMATION THAT APPEARS ON THIS MAP HAS BEEN COMPILED FROM VARIOUS SOURCES, AND ACCURACY IS NOT GUARANTEED. THOSE WISHING TO STAKE MINING CLAIMS SHOULD CONSULT WITH THE MINING RECORDER, MINISTRY OF NORTHERN DEVELOPMENT AND MINES, FOR ADDITIONAL INFORMATION ON THE STATUS OF THE LANDS SHOWN HEREON.

HOYLE TWP.



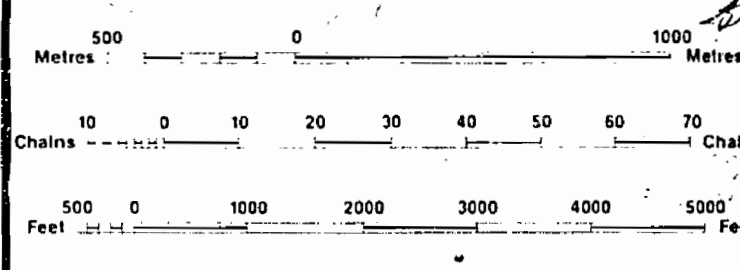
LEGEND

HIGHWAY AND ROUTE No.	
OTHER ROADS	
TRAILS	
SURVEYED LINES:	
TOWNSHIPS, BASE LINES, ETC.	
LOTS, MINING CLAIMS, PARCELS, ETC.	
UNSURVEYED LINES:	
PARCEL BOUNDARY	
MINING CLAIMS ETC.	
RAILWAY AND RIGHT OF WAY	
UTILITY LINES	
NON-PERENNIAL STREAM	
FLOODING OR FLOODING RIGHTS	
SUBDIVISION OR COMPOSITE PLAN	
RESERVATIONS	
ORIGINAL SHORELINE	
MARSH OR MUSKOG	
MINES	
TRAVERSE MONUMENT	

DISPOSITION OF CROWN LANDS

TYPE OF DOCUMENT	SYMBOL
PATENT, SURFACE & MINING RIGHTS	
" SURFACE RIGHTS ONLY	
" MINING RIGHTS ONLY	
LEASE, SURFACE & MINING RIGHTS	
" SURFACE RIGHTS ONLY	
" MINING RIGHTS ONLY	
LICENCE OF OCCUPATION	
ORDER-IN-COUNCIL	
RESERVATION	
CANCELLED	
SAND & GRAVEL	

NOTE: MINING RIGHTS IN PARCELS PATENTED PRIOR TO MAY 6, 1913, VESTED IN ORIGINAL PATENTEE BY THE PUBLIC LANDS ACT, R.S.O. 1970, CHAP. 380, SEC. 63, SUBSEC. 1.



SCALE 1:20 000
GRID ZONE: 17

FLOODING RIGHTS RESERVED TO THE CROWN. DUCKS UNLIMITED - SEE LAND ROLL FILE.

DATE OF ISSUE

JUN 02 1998
PROVINCIAL RECORDING OFFICE - SUDBURY

TOWNSHIP

WHITNEY

M.N.R. ADMINISTRATIVE DISTRICT
TIMMINS

MINING DIVISION

PORCUPINE

LAND TITLES / REGISTRY DIVISION

COCHRANE



ORIGINAL COMPILATION JULY 1984
CHECKED BY: [Signature]

C-395-2

WHITNEY TWP

C-397-1

MAP SYMBOLOLOGY

- Aerial Cableway
- Boundary
- International
- District, Township
- Indian Reserve
- Approximate
- Lot, Concession
- Approximate
- Block Boundary
- Road, Railroad
- Building
- Chimney
- Cliff, Pit, Pile
- Contours
- Interpreted
- Approximate
- Depression
- Control Points
- Horizontal
- Vertical
- Culvert
- Falls
- Double line river
- Fence, Hedge, Wall
- Feature Outline
- Flooded Land
- Lock
- Marsh or Swamp
- Mast
- Mine Head Frame
- Outcrop
- Pipeline (above ground)
- Railroad
- Single Track
- Double Track
- Abandoned
- Variable
- Road
- Highway, County
- Township
- Access (road of doubtful maintenance or significant driveway)
- Trail, Beach Road (garage, alley)
- Rapids
- Double line river with multiple rapids
- Reservoir
- River, Stream, Canal
- Approximate
- Location of flow
- Rock
- Vertical
- Spot Elevation
- (base elevations) -300.0
- Tower
- Transmission Line
- Price
- Tunnel
- Utility Poles
- Wharf, Dock, Pier
- Wooded Area

AREAS WITHDRAWN FROM DISPOSITION

- M.R.O. - MINING RIGHTS ONLY
- S.R.O. - SURFACE RIGHTS ONLY
- M.+S. - MINING AND SURFACE RIGHTS

Description	Order No.	Date	Disposition	File
APPLICATION PENDING UNDER PUBLIC LANDS ACT SURFACE RIGHTS WITHDRAWN				

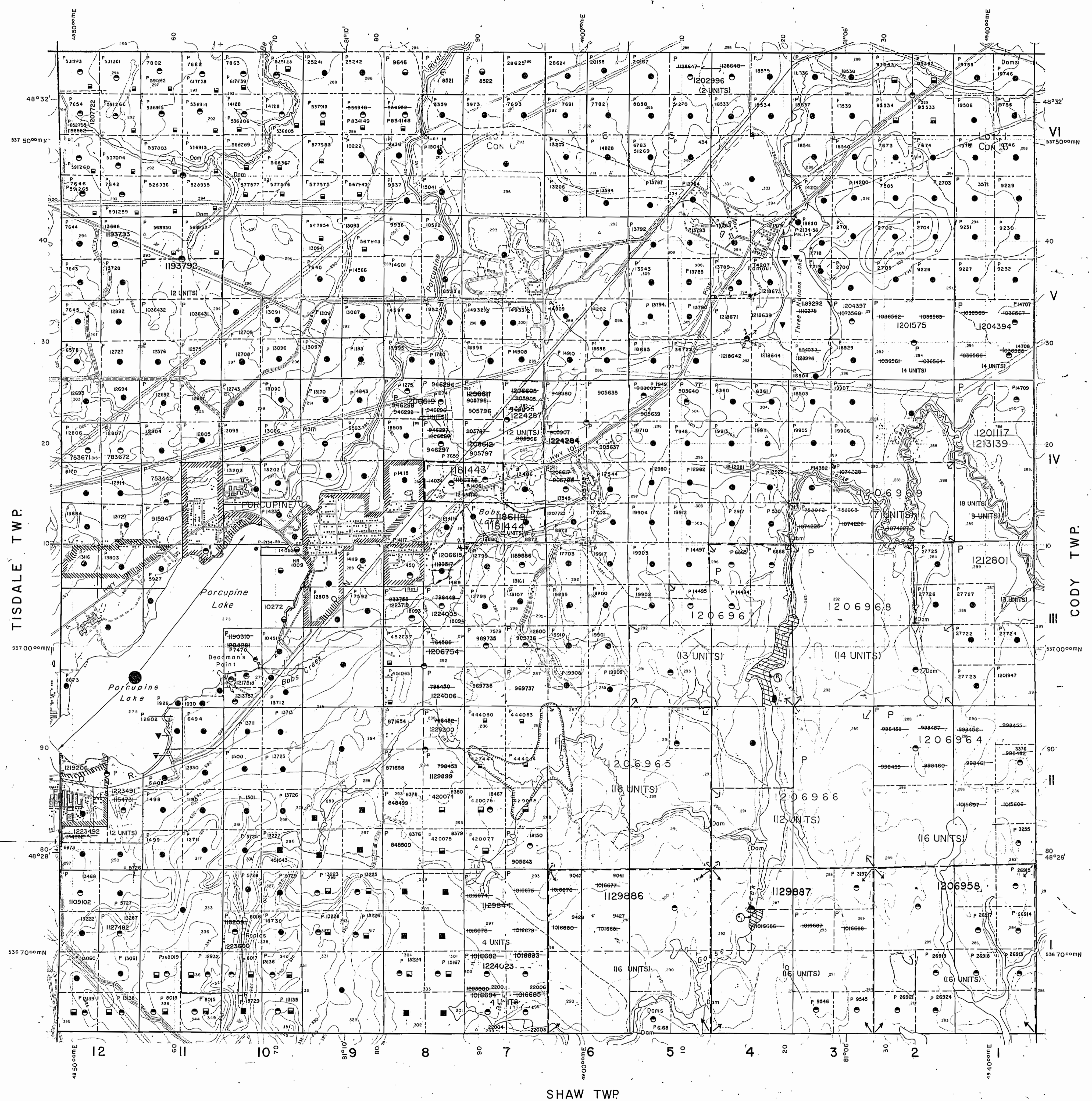
THIS TWP IS SUBJECT TO FOREST ACTIVITY IN 1994/95 FURTHER INFORMATION AVAILABLE ON FILE.

NOTE:

BOUNDARY CHANGED SEPT. 23, 1994 AS PER G. SHERMAN

THE INFORMATION THAT APPEARS ON THIS MAP HAS BEEN COMPILED FROM VARIOUS SOURCES, AND ACCURACY IS NOT GUARANTEED. THOSE WISHING TO STAKE MINING CLAIMS SHOULD CONSULT WITH THE MINING RECORDER, MINISTRY OF NORTHERN DEVELOPMENT AND MINES, FOR ADDITIONAL INFORMATION ON THE STATUS OF THE LANDS SHOWN HEREON.

HOYLE TWP.



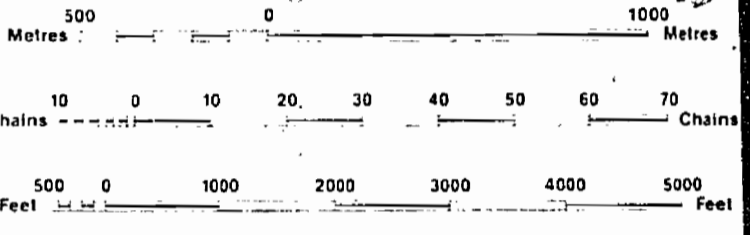
LEGEND

- HIGHWAY AND ROUTE No.
- OTHER ROADS
- TRAILS
- SURVEYED LINES: TOWNSHIPS, BASE LINES, ETC.
- LOTS, MINING CLAIMS, PARCELS, ETC.
- UNSURVEYED LINES: LOT LINES
- PARCEL BOUNDARY
- MINING CLAIMS ETC.
- RAILWAY AND RIGHT OF WAY
- UTILITY LINES
- NON-PERENNIAL STREAM
- FLOODING OR FLOODING RIGHTS
- SUBDIVISION OR COMPOSITE PLAN
- RESERVATIONS
- ORIGINAL SHORELINE
- MARSH OR MUSKIE
- MINES
- TRAVERSE MONUMENT

DISPOSITION OF CROWN LANDS

TYPE OF DOCUMENT	SYMBOL
PATENT, SURFACE & MINING RIGHTS	●
... SURFACE RIGHTS ONLY	○
... MINING RIGHTS ONLY	○
LEASE, SURFACE & MINING RIGHTS	○
... SURFACE RIGHTS ONLY	○
... MINING RIGHTS ONLY	○
LICENCE OF OCCUPATION	○
ORDER-IN-COUNCIL	OC
RESERVATION	○
CANCELLED	○
SAND & GRAVEL	○

NOTE: MINING RIGHTS IN PARCELS PATENTED PRIOR TO MAY 6, 1912, VESTED IN ORIGINAL PATENTEE BY THE PUBLIC LANDS ACT, R.S.O. 1970, CHAP. 380, SEC. 63 SUBSEC. 1.



SCALE 1:20 000
GRID ZONE: 17
FLOODING RIGHTS RESERVED TO THE CROWN, DUCKS UNLIMITED - SEE LAND ROLL FILE.

DATE OF ISSUE
SEP 23 1997
PROVINCIAL RECORDING OFFICE - SUDBURY

TOWNSHIP
WHITNEY
M.N.R. ADMINISTRATIVE DISTRICT
TIMMINS
MINING DIVISION
PORCUPINE
LAND TITLES / REGISTRY DIVISION
COCHRANE

Ministry of Natural Resources
Land Management Branch
Ontario

ORIGINAL COMPILATION JULY 1984
CHECKED BY:
REVISED BY:
ACTIVATED BY: D.C. - JULY 26, 1994

Number
G-3975

MAP SYMBOLOLOGY

Aerial Cableway	Pipeline (above ground)
Boundary	Railroad
International	Single Track
District, Township	Double Track
Indian Reserve	Abandoned
Approximate	Turbine
Lease, Concession	Road
Approximate	Highway, County
Part Boundary	Township
Bridge	Access (case of doubtful maintenance or significant driveway)
Road, Railroad	Trail, Bush Road (Portage, alley)
Building	Rapids
Chimney	Double line river with multiple rapids
Cliff, Pit, Fissure	Double line river with multiple rapids
Contours	Reservoir
Interpretated	River, Stream, Canal
Approximate	Approximate
Depression	Direction of flow
Control Points	Rock
Horizontal	Vertical
0.077405	0.0002
Culvert	Spillway
Falls	Spot Elevation (base elevation) -300.0
Double line river	Tower
Fence, Hedge, Wall	Transmission Line
Feature Outline (Construction, etc.)	Pylon
Flooded Land	Tunnel
Lock	Utility Poles
Marsh or Swamp	Wharf, Dock, Pier
Mast	Wooded Area
Nine Head Frame	
Outcrop	

AREAS WITHDRAWN FROM DISPOSITION

- M.R.O. - MINING RIGHTS ONLY
- S.R.O. - SURFACE RIGHTS ONLY
- M.+S. - MINING AND SURFACE RIGHTS

Description	Order No.	Date	Disposition	File
APPLICATION PENDING UNDER PUBLIC LANDS ACT SURFACE RIGHTS WITHDRAWN				

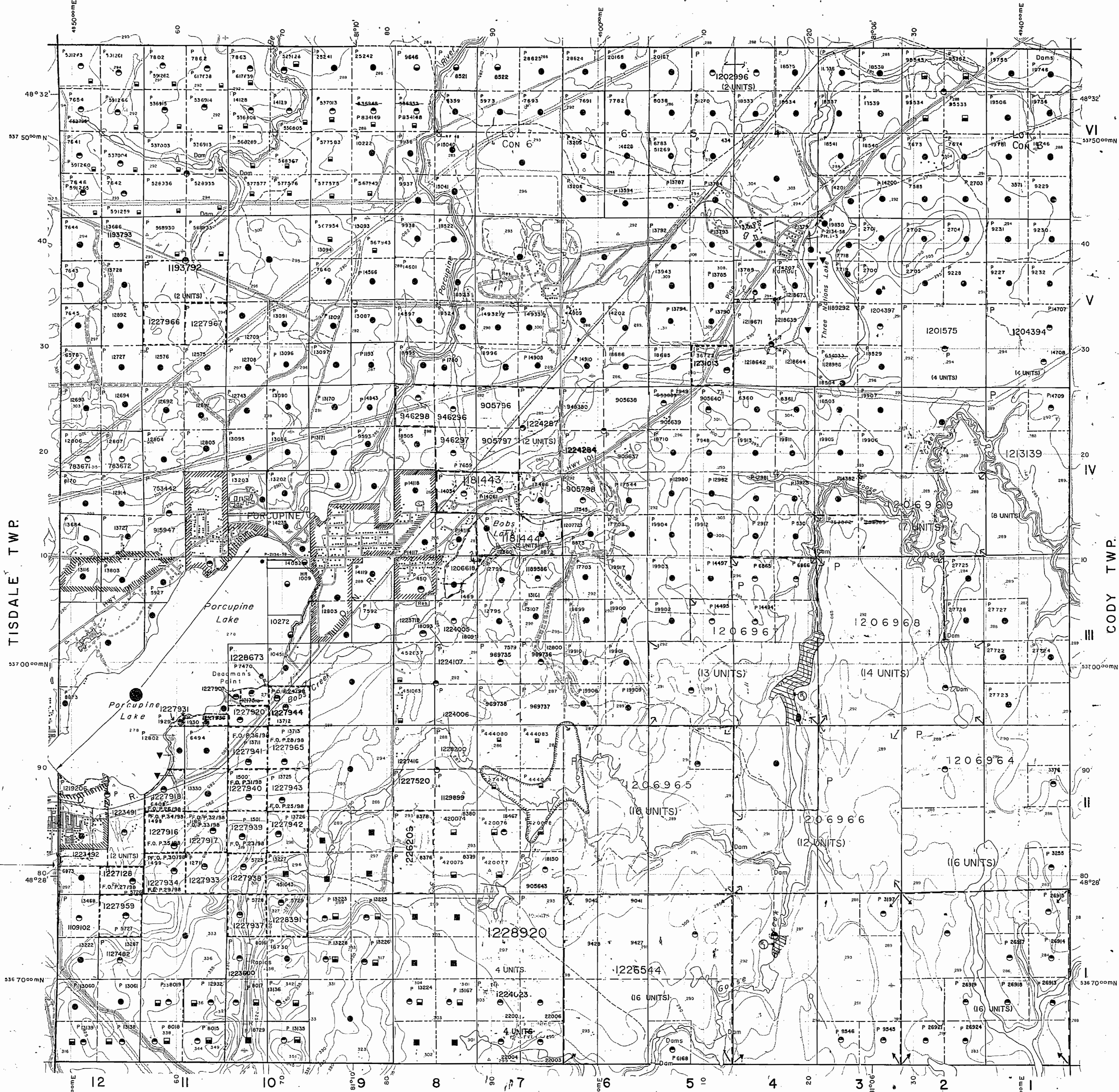
THIS TWP IS SUBJECT TO FOREST ACTIVITY IN 1994/95 FURTHER INFORMATION AVAILABLE ON FILE.

NOTE:

BOUNDARY CHANGED SEPT. 23, 1994 AS PER G. SHERMAN

THE INFORMATION THAT APPEARS ON THIS MAP HAS BEEN COMPILED FROM VARIOUS SOURCES, AND ACCURACY IS NOT GUARANTEED. THOSE WISHING TO STAKE MINING CLAIMS SHOULD CONSULT WITH THE MINING RECORDER, MINISTRY OF NORTHERN DEVELOPMENT AND MINES, FOR ADDITIONAL INFORMATION ON THE STATUS OF THE LANDS SHOWN HEREON.

HOYLE TWP.



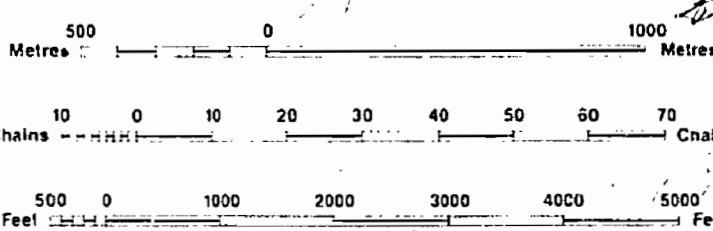
LEGEND

HIGHWAY AND ROUTE No.	Other Roads
TRAILS	
SURVEYED LINES: TOWNSHIPS, BASE LINES, ETC.	
LOTS, MINING CLAIMS, PARCELS, ETC.	
UNSURVEYED LINES: LOT LINES	
PARCEL BOUNDARY	
MINING CLAIMS ETC.	
RAILWAY AND RIGHT OF WAY	
UTILITY LINES	
NON-PERENNIAL STREAM	
FLOODING OR FLOODING RIGHTS	
SUBDIVISION OR COMPOSITE PLAN	
RESERVATIONS	
ORIGINAL SHORELINE	
MARSH OR MUSKIEG	
MINES	
TRAVERSE MONUMENT	

DISPOSITION OF CROWN LANDS

TYPE OF DOCUMENT	SYMBOL
PATENT, SURFACE & MINING RIGHTS	●
" SURFACE RIGHTS ONLY	○
" MINING RIGHTS ONLY	◐
LEASE, SURFACE & MINING RIGHTS	◑
" SURFACE RIGHTS ONLY	◒
" MINING RIGHTS ONLY	◓
LICENCE OF OCCUPATION	◔
ORDER-IN-COUNCIL	OC
RESERVATION	○
CANCELLED	○
SAND & GRAVEL	○

NOTE: MINING RIGHTS IN PARCELS PATENTED PRIOR TO MAY 6, 1913, VESTED IN ORIGINAL PATENTEES BY THE PUBLIC LANDS ACT, R.S.O. 1910, CHAP. 380, SEC. 63, SUBSEC. 1.



SCALE 1:20 000
GRID ZONE: 17

FLOODING RIGHTS RESERVED TO THE CROWN. - DUCKS UNLIMITED - SEE LAND ROLL FILE.

TOWNSHIP

WHITNEY

M.N.R. ADMINISTRATIVE DISTRICT
TIMMINS

MINING DIVISION

PORCUPINE

LAND TITLES / REGISTRY DIVISION

COCHRANE



ORIGINAL COMPILATION JULY 1984
CHECKED BY:
REVISED:
ACTIVATED BY: D.C. - JULY 26, 1994

Number:
G-3975

MAP SYMBOLOLOGY

Aerial Cableway	Pipeline
Boundary	Railroad
International	Single Track
District, Township	Double Track
Indian Reserve	Abandoned
Approximate	Turbidite
Lot, Occupation	Road
Approximate	Highway, County
Park Boundary	Township
Bridge	Access (road of doubtful
Road, Railroad	maintenance or
Building	significant driveway)
Chimney	Trail, Bush Road
Cliff, Pit, Pile	(dashed line)
Contours	Rapids
Interpreted	Double line river
Approximate	with multiple rapids
Depression	Double line river
Control Points	with multiple rapids
Horizontal	Reservoir
Vertical	Approximate
Culvert	seasonal
Falls	direction of flow
Fence, Hedge, Wall	Spot Elevation
Feature Outline	(spot elevation)
(Construction features,	Tower
etc.)	Transmission Line
Flooded Land	Power
Lock	Line
Marsh or Swamp	Utility Poles
Mast	Wharf, Dock, Pier
Mine Head Frame	Wooded Area
Outcrop	

AREAS WITHDRAWN FROM DISPOSITION

M.R.O. - MINING RIGHTS ONLY				
S.R.O. - SURFACE RIGHTS ONLY				
M.+S. - MINING AND SURFACE RIGHTS				
Description	Order No.	Date	Disposition	File
APPLICATION PENDING UNDER PUBLIC LANDS ACT SURFACE RIGHTS WITHDRAWN				

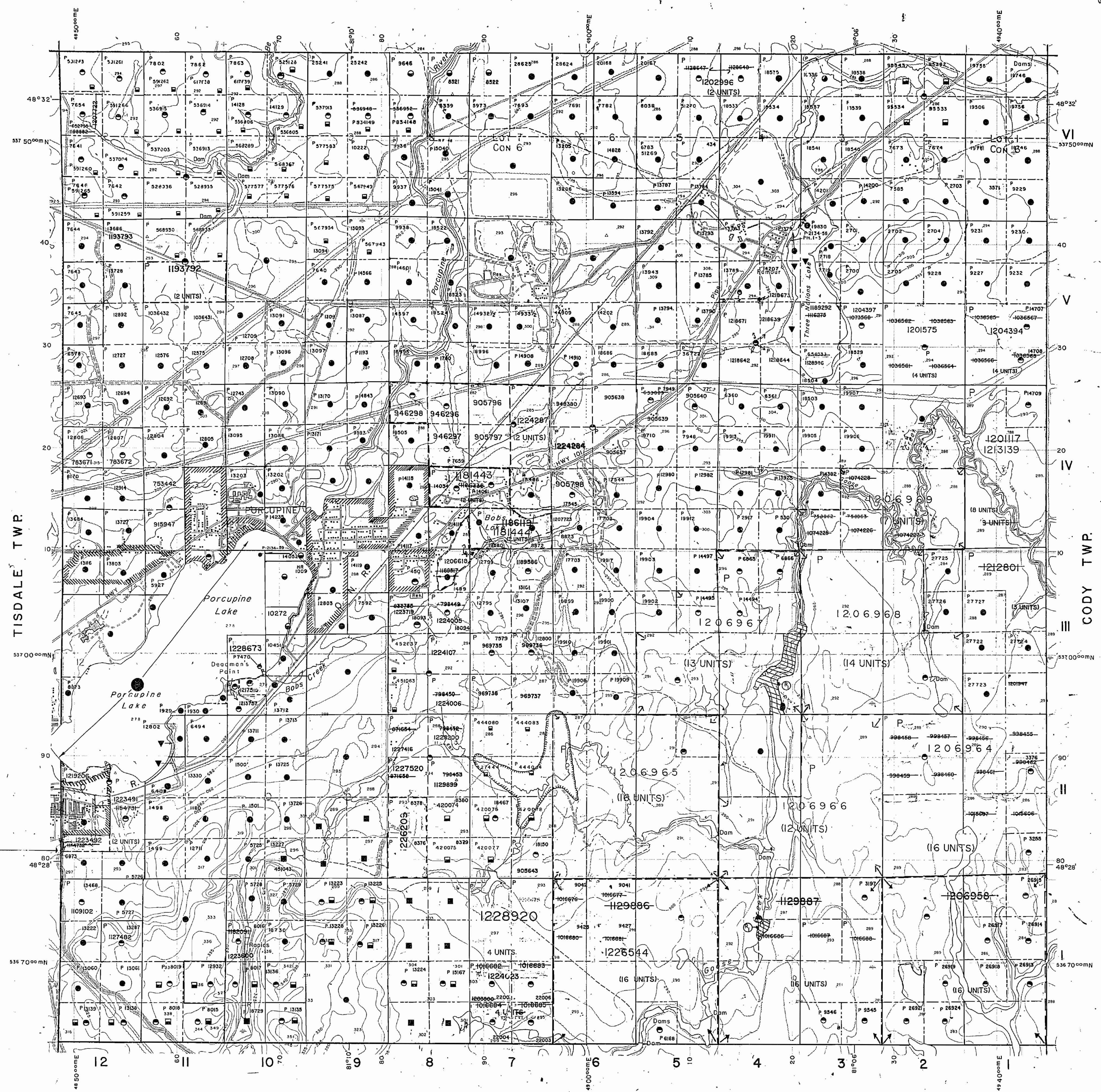
THIS TWP. IS SUBJECT TO FOREST ACTIVITY IN 1994/95 FURTHER INFORMATION AVAILABLE ON FILE.

NOTE:

BOUNDARY CHANGED SEPT. 23, 1994 AS PER G. SHERMAN

THE INFORMATION THAT APPEARS ON THIS MAP HAS BEEN COMPILED FROM VARIOUS SOURCES, AND ACCURACY IS NOT GUARANTEED. THOSE WISHING TO STAKE MINING CLAIMS SHOULD CONSULT WITH THE MINING RECORDER, MINISTRY OF NORTHERN DEVELOPMENT AND MINES, FOR ADDITIONAL INFORMATION ON THE STATUS OF THE LANDS SHOWN HEREON.

HOYLE TWP.



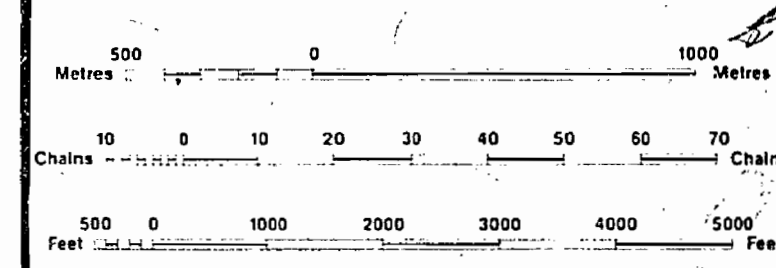
LEGEND

HIGHWAY AND ROUTE No.	
OTHER ROADS	
TRAILS	
SURVEYED LINES:	
TOWNSHIPS, BASE LINES, ETC.	
LOTS, MINING CLAIMS, PARCELS, ETC.	
UNSURVEYED LINES:	
LOT LINES	
PARCEL BOUNDARY	
MINING CLAIMS ETC.	
RAILWAY AND RIGHT OF WAY	
UTILITY LINES:	
NON-PERENNIAL STREAM	
FLOODING OR FLOODING RIGHTS	
SUBDIVISION OR COMPOSITE PLAN	
RESERVATIONS	
ORIGINAL SHORELINE	
MARSH OR MUSKEG	
MINES	
TRAVERSE MONUMENT	

DISPOSITION OF CROWN LANDS

TYPE OF DOCUMENT	SYMBOL
PATENT, SURFACE & MINING RIGHTS	●
" SURFACE RIGHTS ONLY	○
" MINING RIGHTS ONLY	◐
LEASE, SURFACE & MINING RIGHTS	■
" SURFACE RIGHTS ONLY	◼
" MINING RIGHTS ONLY	◻
LICENCE OF OCCUPATION	▼
ORDER-IN-COUNCIL	OC
RESERVATION	⊙
CANCELLED	⊘
SAND & GRAVEL	⊚

NOTE: MINING RIGHTS IN PARCELS PATENTED PRIOR TO MAY 6, 1913, VESTED IN ORIGINAL PATENTEE BY THE PUBLIC LANDS ACT, R.S.O. 1970, CHAP. 380, SEC. 63, SUBSEC. 1.

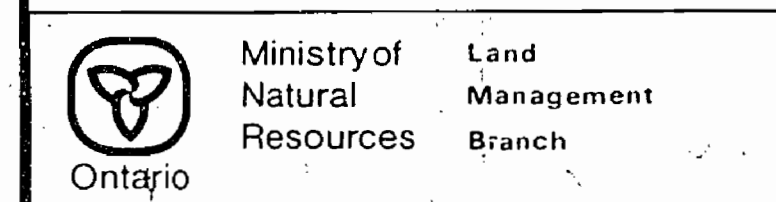


FLOODING RIGHTS RESERVED TO THE CROWN. - DUCKS UNLIMITED - SEE LAND ROLL FILE.

DATE OF ISSUE

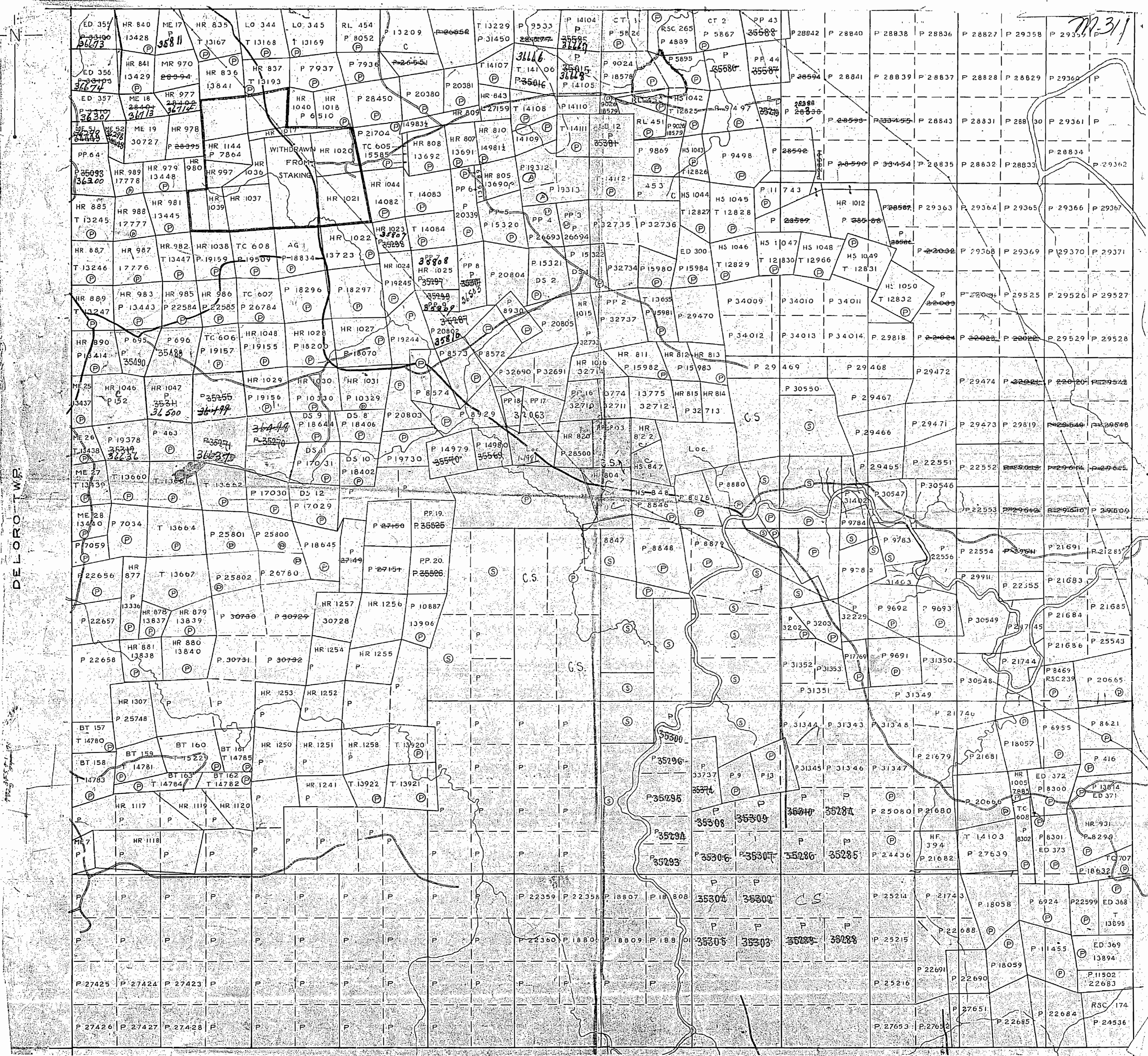
MAY 27 1998
PROVINCIAL RECORDING OFFICE - SUDBURY

TOWNSHIP
WHITNEY
M.N.R. ADMINISTRATIVE DISTRICT
TIMMINS
MINING DIVISION
PORCUPINE
LAND TITLES / REGISTRY DIVISION
COCHRANE



ORIGINAL COMPILATION JULY 1984
CHECKED BY:
REVISED:
ACTIVATED BY: d.c. - JULY 26, 1994
Number
G-3975

M-311



DE LORO TWR



2505-C

WHITNEY TWP

2505-C

MAP SYMBOLOLOGY

Aerial Cableway	Pipeline (above ground)
Boundary	Railroad
International	Single Track
Interprovincial	Double Track
District, Township Indian Reserve	Abandonment
Approximate	Variable
Lot, Concession	Road
Approximate	Highway, County
Para Boundary	Township
Bridge	Access (road of doubtful maintenance at significant driveway)
Road, Railroad	Trail, Beach Road (Storage sites)
Building	Rapids
Chimney	Double line river with multiple rapids
Cliff, Pit, Pile	Double line river with multiple rapids
Contours	Reservoir
Interpolated	River, Stream, Canal
Approximate	Approximate
Depression	Direction of flow
Control Points	Lock
Horizontal	Spot Elevation (see elevation)
Vertical	Tower
0.0174031	Transmission Line
0.00002	Piles
Culvert	Fence
Falls	Fence, Hedge, Wall
Devote line river	Feature Outline (Construction features, etc.)
Flooded Land	Flooded Land
Lock	Utility Poles
Marsh or Swamp	Wharf, Dock, Pier
Mast	Wooded Area
Mine Head Frame	
Outcrop	

AREAS WITHDRAWN FROM DISPOSITION

- M.R.O. - MINING RIGHTS ONLY
- S.R.O. - SURFACE RIGHTS ONLY
- M.+S. - MINING AND SURFACE RIGHTS

Description	Order No.	Date	Disposition	File

APPLICATION PENDING UNDER PUBLIC LANDS ACT
SURFACE RIGHTS WITHDRAWN

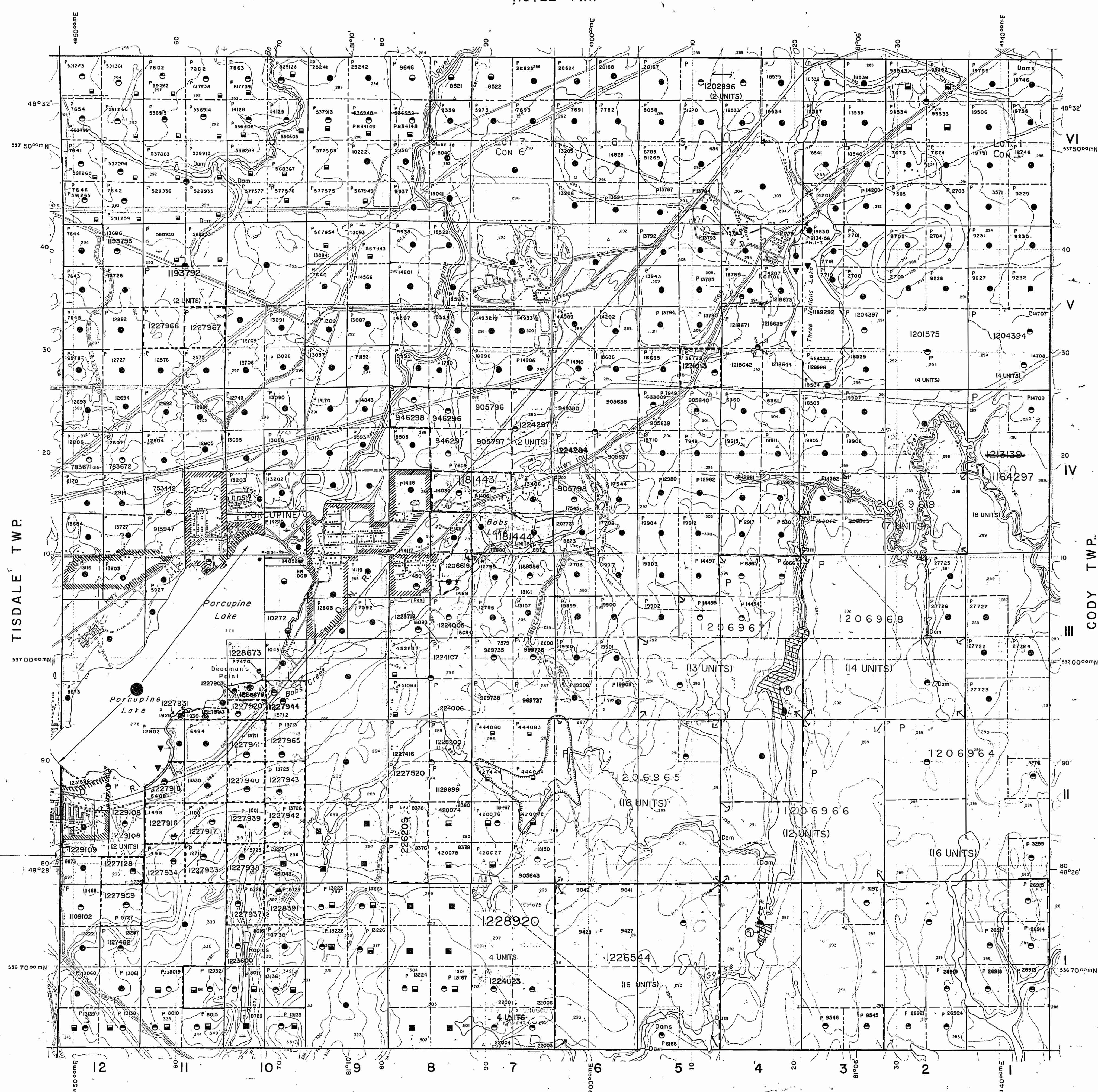
THIS TWP. IS SUBJECT TO FOREST ACTIVITY IN 1994/95
FURTHER INFORMATION AVAILABLE ON FILE.

NOTE:

BOUNDARY CHANGED SEPT. 23, 1994
AS PER G. SHERMAN

THE INFORMATION THAT APPEARS ON THIS MAP HAS BEEN COMPILED FROM VARIOUS SOURCES, AND ACCURACY IS NOT GUARANTEED. THOSE WISHING TO STAKE MINING CLAIMS SHOULD CONSULT WITH THE MINING RECORDER, MINISTRY OF NORTHERN DEVELOPMENT AND MINES, FOR ADDITIONAL INFORMATION ON THE STATUS OF THE LANDS SHOWN HEREON.

HOYLE TWP.



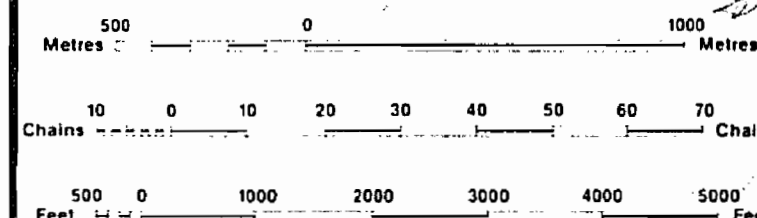
LEGEND

HIGHWAY AND ROUTE No.	
OTHER ROADS	
TRAILS	
SURVEYED LINES:	
TOWNSHIPS, BASE LINES, ETC.	
LOTS, MINING CLAIMS, PARCELS, ETC.	
UNSURVEYED LINES:	
PARCEL BOUNDARY	
MINING CLAIMS ETC.	
RAILWAY AND RIGHT OF WAY	
UTILITY LINES	
NON-PERENNIAL STREAM	
FLOODING OR FLOODING RIGHTS	
SUBDIVISION OR COMPOSITE PLAN	
RESERVATIONS	
ORIGINAL SHORELINE	
MARSH OR MUSKEG	
MINES	
TRAVERSE MONUMENT	

DISPOSITION OF CROWN LANDS

TYPE OF DOCUMENT	SYMBOL
PATENT, SURFACE & MINING RIGHTS	●
" SURFACE RIGHTS ONLY	○
" MINING RIGHTS ONLY	◐
LEASE, SURFACE & MINING RIGHTS	■
" SURFACE RIGHTS ONLY	◼
" MINING RIGHTS ONLY	◻
LICENCE OF OCCUPATION	▽
ORDER-IN-COUNCIL	OC
RESERVATION	⊙
CANCELLED	⊖
SAND & GRAVEL	⊕

NOTE: MINING RIGHTS IN PARCELS PATENTED PRIOR TO MAY 6, 1913, VESTED IN ORIGINAL PATENTEE BY THE PUBLIC LANDS ACT, R.S.O. 1910, CHAP. 380, SEC. 63, SUBSEC. 1.



SCALE 1:20 000
GRID ZONE: 17

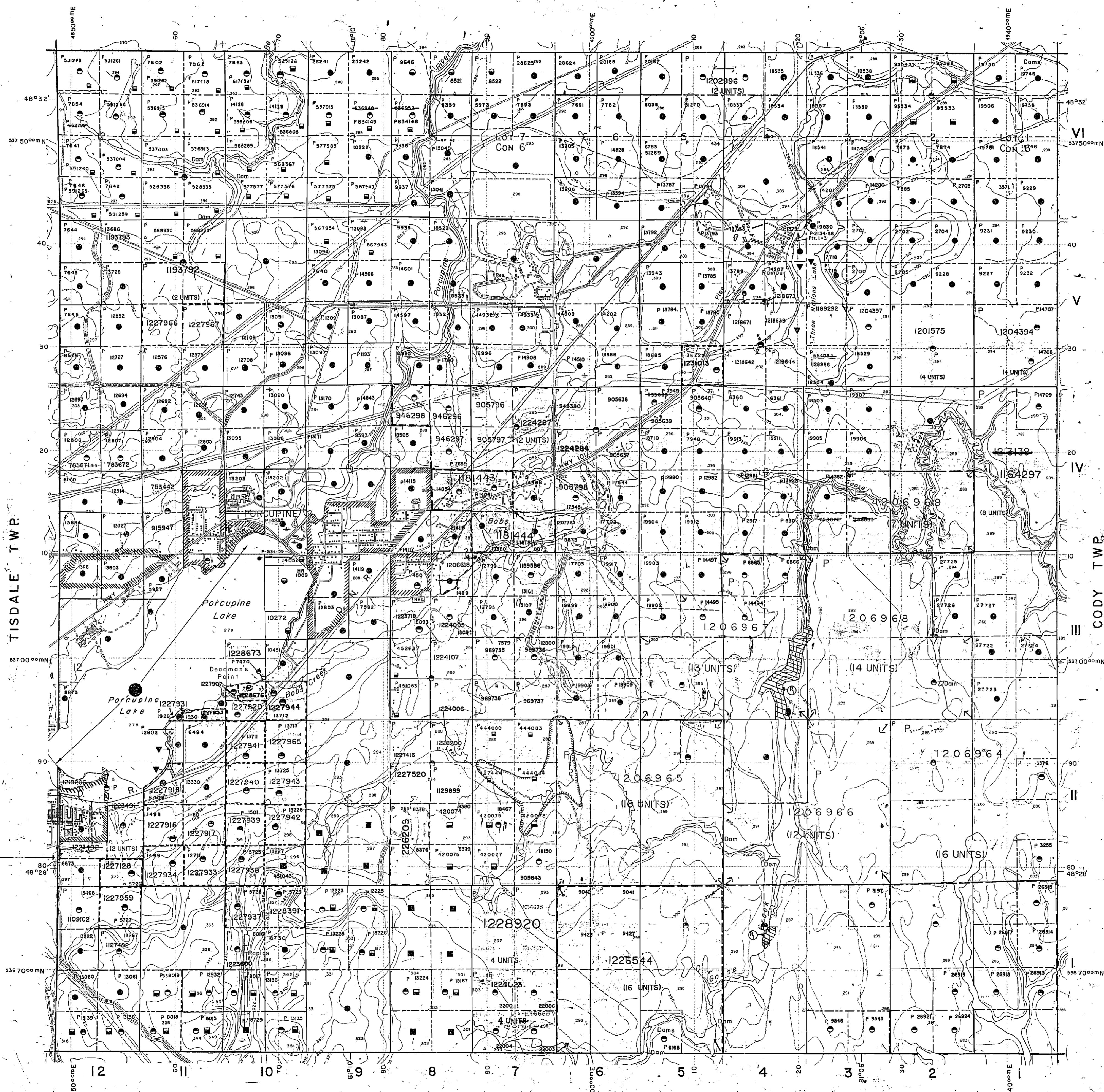
FLOODING RIGHTS RESERVED TO THE CROWN,
DUCKS UNLIMITED - SEE LAND ROLL FILE.

TOWNSHIP
WHITNEY
M.N.R. ADMINISTRATIVE DISTRICT
TIMMINS
MINING DIVISION
PORCUPINE
LAND TITLES / REGISTRY DIVISION
COCHRANE



ORIGINAL COMPILED JULY 1984
CHECKED BY: [Signature]
REVISED:
ACTIVATED BY: D.C. - JULY 26, 1994
Number: **G-3975**

HOYLE TWP



MAP SYMBOLOLOGY

Aerial Cableway	Pipeline (above ground)
Boundary	Railroad
International	Single Track
Interprovincial	Double Track
District, Township	Abandoned
Indian Reserve	Turbine
Approach	Road
Lot, Concession	Highway, County
Approach	Township
Part Boundary	Access (road of rough/ maintenance or significant driveway)
Bridge	Trail, Bush Road (portage, alley)
Road, Railroad	Rapids
Building	Double line river with multiple rapids
Chimney	Double line river with multiple rapids
Cliff, Pit, Pile	Reservoir
Contours	River, Stream, Canal
Intersected	Approximate (dashed)
Approach	Direction of flow
Depression	Lock
Control Points	Spot Elevation (base elevations -300.0)
Horizontal	Tower
Vertical	Transmission Line
Culvert	Pole
Falls	Pylon
Double line river	Tunnel
Fence, Hedge, Wall	Utility Poles
Feature Outline (Construction features, etc.)	Wharf, Dock, Pier
Flooded Land	Wooded Area
Lock	
Marsh or Swamp	
Moat	
Mine Head Frame	
Outcrop	

AREAS WITHDRAWN FROM DISPOSITION

M.R.O. - MINING RIGHTS ONLY
 S.R.O. - SURFACE RIGHTS ONLY
 M.+S. - MINING AND SURFACE RIGHTS

Description	Order No.	Data	Disposition	File
APPLICATION PENDING UNDER PUBLIC LANDS ACT				
SURFACE RIGHTS WITHDRAWN				

NOTE:

BOUNDARY CHANGED SEPT. 23, 1994 AS PER G. SHERMAN

THIS TWP. IS SUBJECT TO FOREST ACTIVITY IN 1994/95 FURTHER INFORMATION AVAILABLE ON FILE.

THE INFORMATION THAT APPEARS ON THIS MAP HAS BEEN COMPILED FROM VARIOUS SOURCES, AND ACCURACY IS NOT GUARANTEED. THOSE WISHING TO STAKE MINING CLAIMS SHOULD CONSULT WITH THE MINING RECORDER, MINISTRY OF NORTHERN DEVELOPMENT AND MINES, FOR ADDITIONAL INFORMATION ON THE STATUS OF THE LANDS SHOWN HEREON.

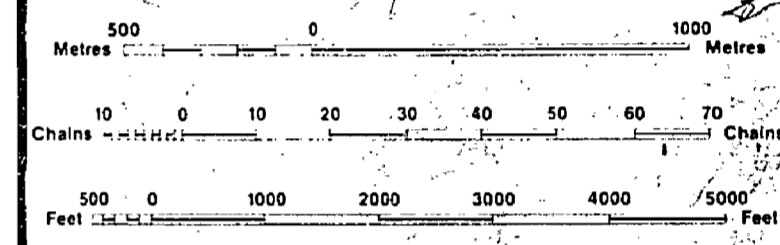
LEGEND

HIGHWAY AND ROUTE No.	
OTHER ROADS	
TRAILS	
SURVEYED LINES: TOWNSHIPS, BASE LINES, ETC.	
LOTS, MINING CLAIMS, PARCELS, ETC.	
UNSURVEYED LINES:	
PARCEL BOUNDARY	
MINING CLAIMS ETC.	
RAILWAY AND RIGHT OF WAY	
UTILITY LINES	
NON-PERENNIAL STREAM	
FLOODING OR FLOODING RIGHTS	
SUBDIVISION OR COMPOSITE PLAN	
RESERVATIONS	
ORIGINAL SHORELINE	
MARSH OR MUSKEG	
MINES	
TRAVERSE MONUMENT	

DISPOSITION OF CROWN LANDS

TYPE OF DOCUMENT	SYMBOL
PATENT, SURFACE & MINING RIGHTS	
SURFACE RIGHTS ONLY	
MINING RIGHTS ONLY	
LEASE, SURFACE & MINING RIGHTS	
SURFACE RIGHTS ONLY	
MINING RIGHTS ONLY	
LICENCE OF OCCUPATION	
ORDER-IN-COUNCIL	
RESERVATION	
CANCELLED	
SAND & GRAVEL	

NOTE: MINING RIGHTS IN PARCELS PATENTED PRIOR TO MAY 6, 1913, VESTED IN ORIGINAL PATENTEE BY THE PUBLIC LANDS ACT, R.S.O. 1970, CHAP. 380, SEC. 63, SUBSEC. 1.



SCALE 1:20,000
 GRID ZONE: 17

FLOODING RIGHTS RESERVED TO THE CROWN - DUCKS UNLIMITED - SEE LAND ROLL FILE.

DATE OF ISSUE:
 NOV 02 1998
 PROVINCIAL RECORDING OFFICE - SUDBURY

TOWNSHIP
WHITNEY
 M.N.R. ADMINISTRATIVE DISTRICT
TIMMINS
 MINING DIVISION
PORCUPINE
 LAND TITLES / REGISTRY DIVISION
COCHRANE

Ministry of Natural Resources
 Land Management Branch
 Ontario

ORIGINAL COMPILATION JULY 1984
 CHECKED BY:
 REVISED:
 ACTIVATED BY: G.C. - JULY 26, 1994

Number
G-3975

SHAW TWP

MAP SYMBOLOGY

Aerial Cableway	Pipeline (above ground)
Boundary	Railroad
International	Single Tracks
Interprovincial	Double Tracks
District, Township	Abandoned
Indian Reserve	Turbine
Approximate	Road
Lot, Concession	Highway, County
Approximate	Township
Park Boundary	Access (road of doubtful maintenance or significant driveway)
Bridge	Trail, Bush Road (footage, utility)
Road, Railroad	Repis
Building	Double line river with multiple rapids
Chimney	Double line river with multiple rapids
Cliff, Pit, Pile	Reservoir
Contours	River, Stream, Canal
Interpolated	Approximate
Approximate	Direction of flow
Depression	Rock
Control Points	Significant
Horizontal	Pool
Vertical	Spot Elevation (above sea level)
Culvert	Tower
Falls	Transmission Line
Double line river	Poles
Fence, Hedge, Wall	Pylon
Feature Outline (Construction features, etc.)	Tunnel
Flooded Land	Utility Poles
Lock	Wharf, Dock, Pier
Marsh or Swamp	Wooded Area
Mast	
Mine Head Frame	
Outcrop	

AREAS WITHDRAWN FROM DISPOSITION

- M.R.O. - MINING RIGHTS ONLY
- S.R.O. - SURFACE RIGHTS ONLY
- M.+S. - MINING AND SURFACE RIGHTS

Description	Order No.	Date	Disposition	File

APPLICATION PENDING UNDER PUBLIC LANDS ACT SURFACE RIGHTS WITHDRAWN

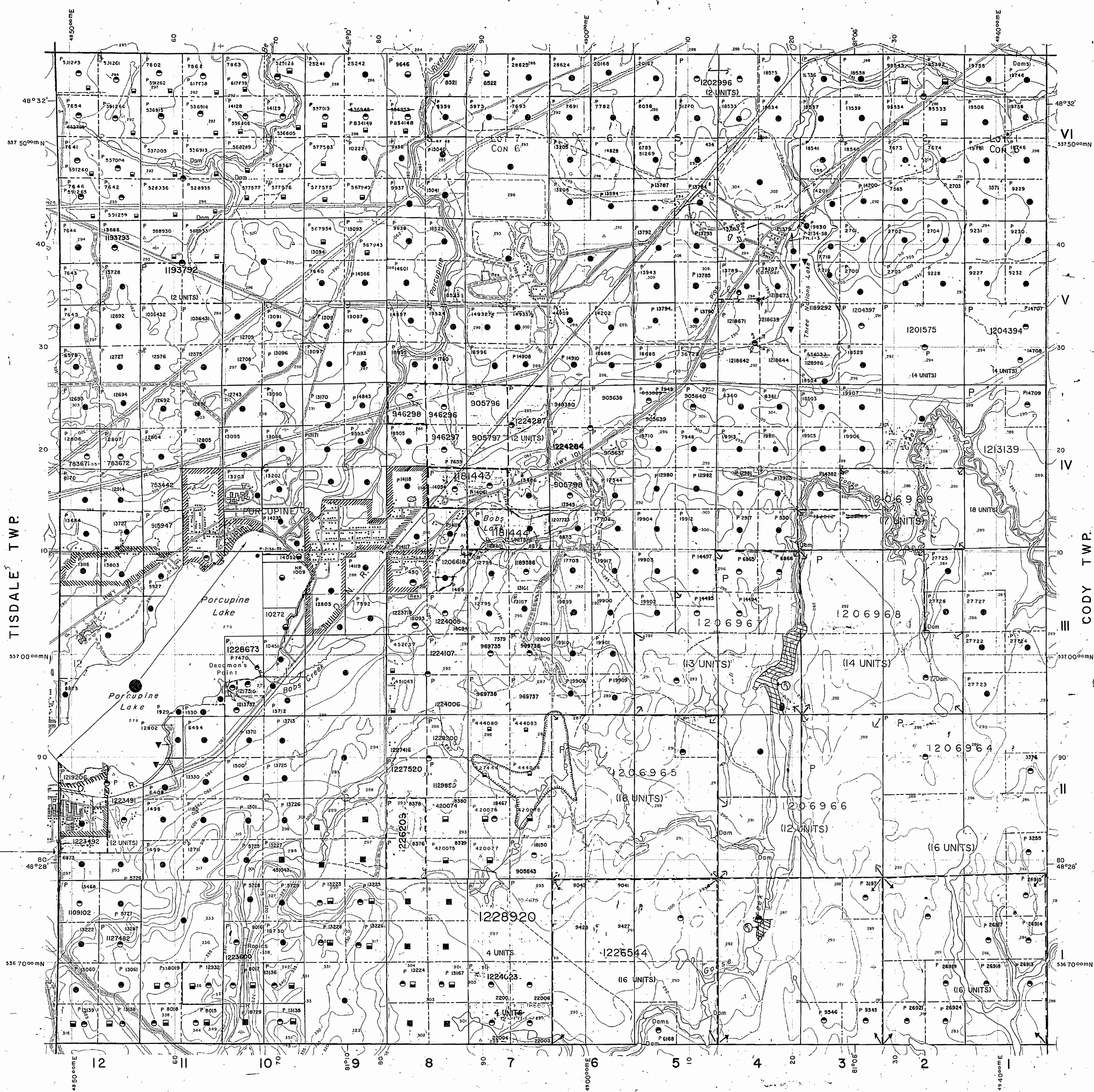
THIS TWP. IS SUBJECT TO FOREST ACTIVITY IN 1994/95 FURTHER INFORMATION AVAILABLE ON FILE.

NOTE:

BOUNDARY CHANGED SEPT. 23, 1994 AS PER G. SHERMAN

THE INFORMATION THAT APPEARS ON THIS MAP HAS BEEN COMPILED FROM VARIOUS SOURCES, AND ACCURACY IS NOT GUARANTEED. THOSE WISHING TO STAKE MINING CLAIMS SHOULD CONSULT WITH THE MINING RECORDER, MINISTRY OF NORTHERN DEVELOPMENT AND MINES, FOR ADDITIONAL INFORMATION ON THE STATUS OF THE LANDS SHOWN HEREON.

HOYLE TWP.



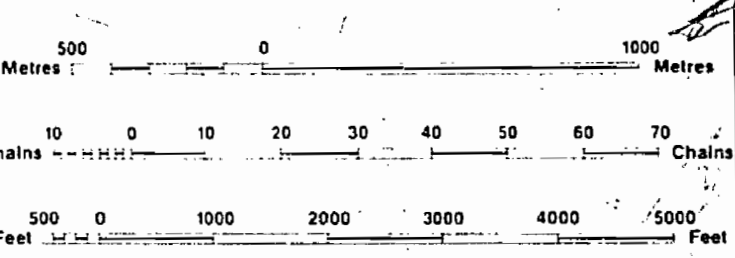
LEGEND

HIGHWAY AND ROUTE No.	
OTHER ROADS	
TRAILS	
SURVEYED LINES: TOWNSHIPS, BASE LINES, ETC.	
LOTS, MINING CLAIMS, PARCELS, ETC.	
UNSURVEYED LINES: LOT LINES	
PARCEL BOUNDARY	
MINING CLAIMS ETC.	
RAILWAY AND RIGHT OF WAY	
UTILITY LINES	
NON-PERENNIAL STREAM	
FLOODING OR FLOODING RIGHTS	
SUBDIVISION OR COMPOSITE PLAN	
RESERVATIONS	
ORIGINAL SHORELINE	
MARSH OR MUSKIE	
MINES	
TRAVERSE MONUMENT	

DISPOSITION OF CROWN LANDS

TYPE OF DOCUMENT	SYMBOL
PATENT, SURFACE & MINING RIGHTS	
... SURFACE RIGHTS ONLY	
... MINING RIGHTS ONLY	
LEASE, SURFACE & MINING RIGHTS	
... SURFACE RIGHTS ONLY	
... MINING RIGHTS ONLY	
LICENCE OF OCCUPATION	
ORDER-IN-COUNCIL	
RESERVATION	
CANCELLED	
SAND & GRAVEL	

NOTE: MINING RIGHTS IN PARCELS PATENTED PRIOR TO MAY 6, 1913, VESTED IN ORIGINAL PATENTEES BY THE PUBLIC LANDS ACT, R.S.O. 1970, CHAP. 380, SEC. 63, SUBSEC. 1.



SCALE 1:20 000
GRID ZONE: 17

FLOODING RIGHTS RESERVED TO THE CROWN - DUCKS UNLIMITED - SEE LAND ROLL FILE.

DATE OF ISSUE

MAY 29 1998

PROVINCIAL RECORDS OFFICE - SUBSURY

TOWNSHIP

WHITNEY

M.N.R. ADMINISTRATIVE DISTRICT

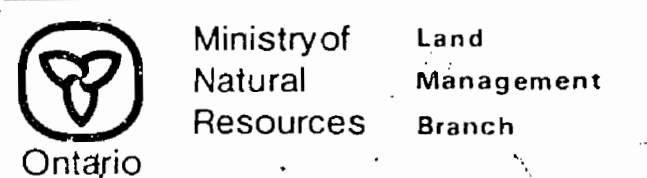
TIMMINS

MINING DIVISION

PORCUPINE

LAND TITLES / REGISTRY DIVISION

COCHRANE



ORIGINAL COMPILATION JULY 1984
CHECKED BY:
REVISED BY:
ACTIVATED BY: D.C. - JULY 26, 1994

Number G-3975

SHAW TWP.