

REFERENCES

AREAS WITHDRAWN FROM DISPOSITION

M.R.O. - MINING RIGHTS ONLY				
S.R.O. - SURFACE RIGHTS ONLY				
M. + S. - MINING AND SURFACE RIGHTS				
Description	Order No.	Date	Disposition	File
① - (N. 30° 70')	W. 61/76	18839	1/10/78	S.R.
② - "	W. 33/78	18858	9/6/78	S.R.

LEGEND

HIGHWAY AND ROUTE No.	
OTHER ROADS	
TRAILS	
SURVEYED LINES:	
TOWNSHIPS, BASE LINES, ETC.	
LOTS, MINING CLAIMS, PARCELS, ETC.	
UNSURVEYED LINES:	
LOT LINES	
PARCEL BOUNDARY	
MINING CLAIMS ETC.	
RAILWAY AND RIGHT OF WAY	
UTILITY LINES	
NON-PERENNIAL STREAM	
FLOODING OR FLOODING RIGHTS	
SUBDIVISION OR COMPOSITE PLAN	
RESERVATIONS	
ORIGINAL SHORELINE	
MARSH OR MUSKEG	
MINES	
TRAVERSE MONUMENT	

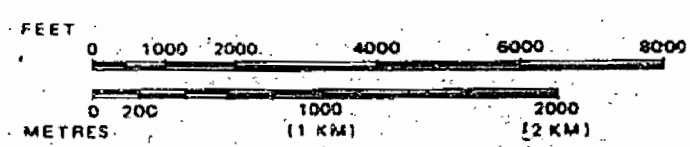
DISPOSITION OF CROWN LANDS

TYPE OF DOCUMENT	SYMBOL
PATENT, SURFACE & MINING RIGHTS	
" SURFACE RIGHTS ONLY	
" MINING RIGHTS ONLY	
LEASE, SURFACE & MINING RIGHTS	
" SURFACE RIGHTS ONLY	
" MINING RIGHTS ONLY	
LICENCE OF OCCUPATION	
ORDER IN COUNCIL	
RESERVATION	
CANCELLED	
SAND & GRAVEL	

NOTE: MINING RIGHTS IN PARCELS PATENTED PRIOR TO MAY 6, 1912, VESTED IN ORIGINAL PATENTEE BY THE PUBLIC LANDS ACT, R.S.O. 1970, CHAP. 380, SEC. 63, SUBSEC. 1.

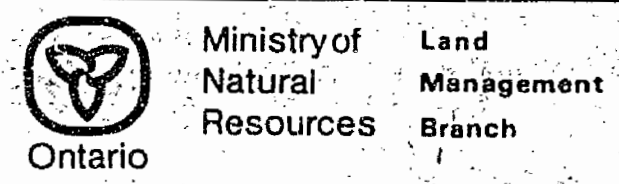
Feb. 17/87

SCALE: 1 INCH = 40 CHAINS



AREA WINDIGO RIVER

M.N.R. ADMINISTRATIVE DISTRICT
SIOUX LOOKOUT
MINING DIVISION
PATRICIA
LAND TITLES / REGISTRY DIVISION
KENORA (PATRICIA PORTION)



Date JANUARY, 1984

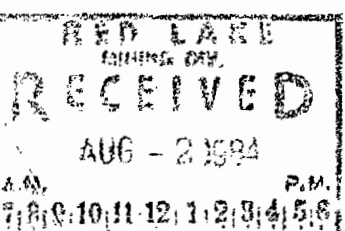
Number

G-2268

BURLING LAKE G-1972

AGUTUA LAKE G-1924

WINDIGO LAKE (WEST PART) G-2267



REFERENCES

AREAS WITHDRAWN FROM DISPOSITION

M.R.O. - MINING RIGHTS ONLY

S.R.O. - SURFACE RIGHTS ONLY

M. & S. - MINING AND SURFACE RIGHTS

Description	Order No.	Date	Disposition	File
①-43 (R.S.O.)	W. 41/76	188839	3/10/76	S.R.
②-43 (R.S.O.)	W. 33/76	188838	3/10/76	S.R.
③-43 (R.S.O.)	O-9/88	Reopened	88/01/28	S.R.
④-43 (R.S.O.)	O-10/88	Reopened	88/01/28	S.R.

Area Not Mapped



LEGEND

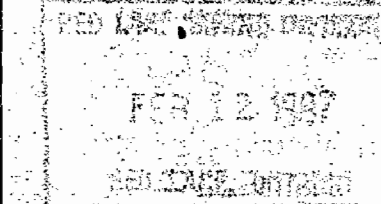
HIGHWAY AND ROUTE No.	
OTHER ROADS	
TRAILS	
SURVEYED LINES:	
TOWNSHIPS, BASE LINES, ETC.	
LOTS, MINING CLAIMS, PARCELS, ETC.	
UNSURVEYED LINES:	
LOT LINES	
PARCEL BOUNDARY	
MINING CLAIMS ETC.	
RAILWAY AND RIGHT OF WAY	
UTILITY LINES	
NON-PERENNIAL STREAM	
FLOODING OR FLOODING RIGHTS	
SUBDIVISION OR COMPOSITE PLAN	
RESERVATIONS	
ORIGINAL SHORELINE	
MARSH OR MUSKEG	
MINES	
TRAVERSE MONUMENT	

DISPOSITION OF CROWN LANDS

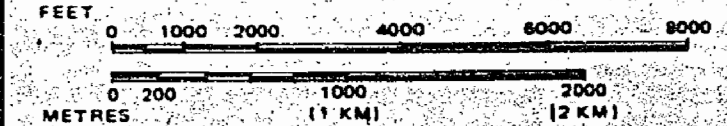
TYPE OF DOCUMENT	SYMBOL
PATENT, SURFACE & MINING RIGHTS	
" SURFACE RIGHTS ONLY	
" MINING RIGHTS ONLY	
LEASE, SURFACE & MINING RIGHTS	
" SURFACE RIGHTS ONLY	
" MINING RIGHTS ONLY	
LICENCE OF OCCUPATION	
ORDER-IN-COUNCIL	
RESERVATION	
CANCELLED	
SAND & GRAVEL	

NOTE: MINING RIGHTS IN PARCELS PATENTED PRIOR TO MAY 8, 1913, VESTED IN ORIGINAL PATENTEE BY THE PUBLIC LANDS ACT, R.S.O. 1970, CHAP. 380, SEC. 62, SUBSEC. 1.

AREA IN WINDIGO TRIBAL COUNCIL PLANNING BOARD
FOR DETAILS CALL 737-1585



SCALE: 1 INCH = 40 CHAINS



AREA

WINDIGO RIVER

M.N.R. ADMINISTRATIVE DISTRICT

SIoux LOOKOUT

MINING DIVISION

PATRICIA

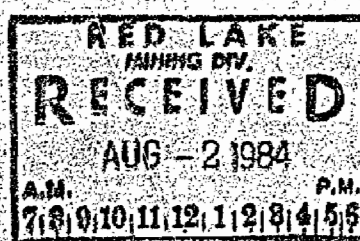
LAND TITLES / REGISTRY DIVISION

KENORA (PATRICIA PORTION)



Date JANUARY, 1984

Number G-2268



WINDIGO LAKE (WEST PART) G-2267