

# PLAN OF WINNINGTON TWP.

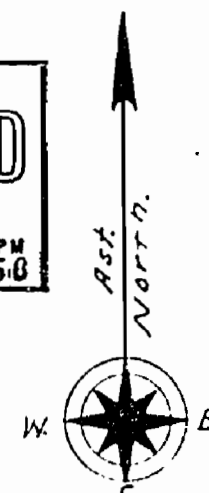
~~LARDER~~ PORCUPINE ~~LAKE~~ MINING DIVISION.

DISTRICT OF COCHRANE.

— Scale, 40 chains to an inch. —

GREER TWP.

LARDER LAKE  
MINING DIV.  
RECEIVED  
JUL 28 1969  
AM 7189 10, 11, 12, 1, 2, 3, 4, 50 PM



## NOTE

400' Surface Rights Reservation  
around all Lakes and Rivers.

EXPLORATORY LICENSE OF OCCUPATION

Nº 14511 (GAS & OIL ONLY)

CANCELLED.

EXPLORATORY LICENSE OF OCCUPATION

Nº 14510 (GAS & OIL ONLY)

Exploratory  
14542

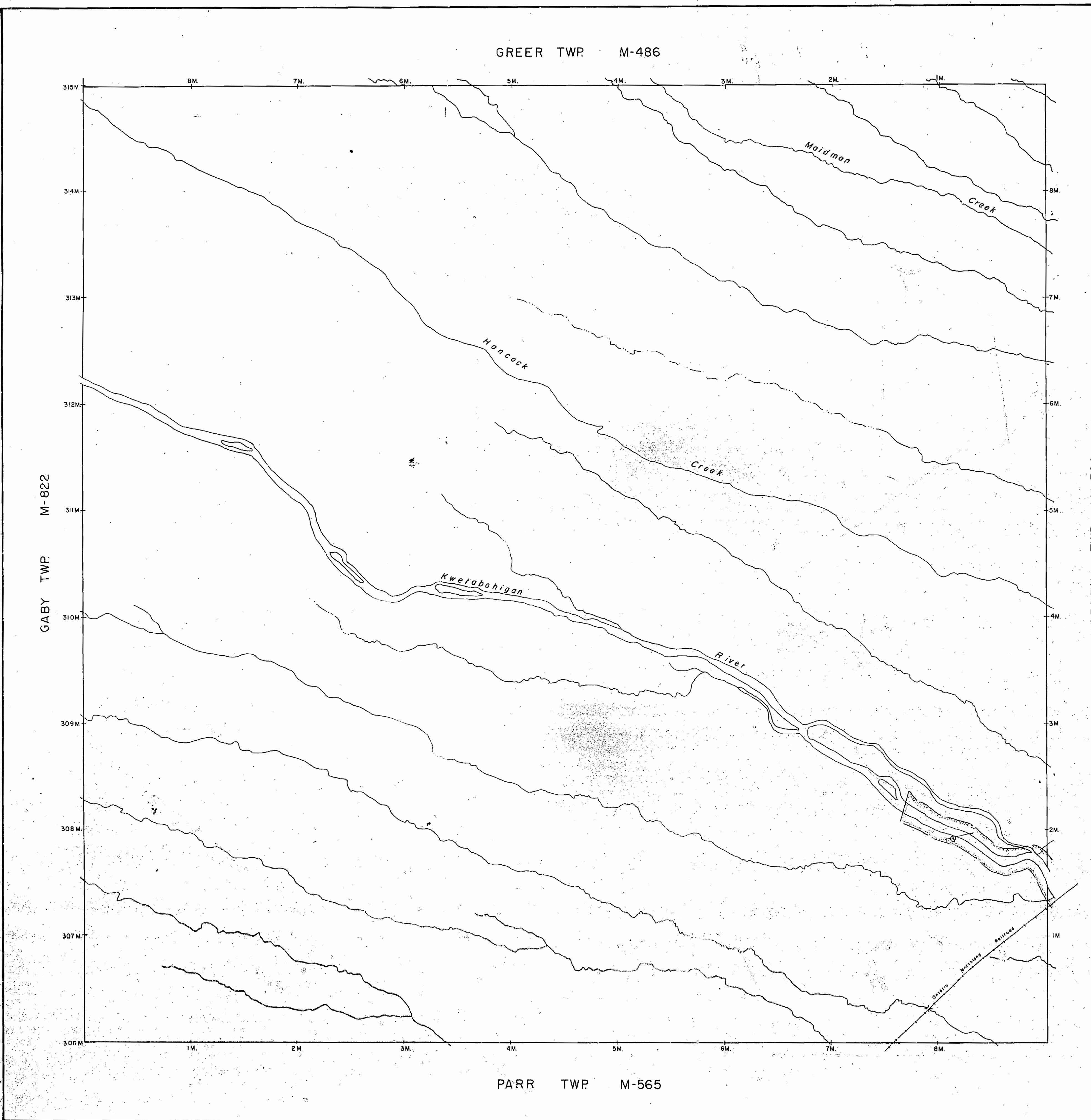
(Exclude on 14942)  
see map 2/71

HORDEN TWP.

APR 3/79

PARR TWP.

WINNINGTON TWP.



# LEGEND

HIGHWAY AND ROUTE No.	
OTHER ROADS	
TRAILS	
SURVEYED LINES:	
TOWNSHIPS, BASE LINES, ETC.	
LOTS, MINING CLAIMS, PARCELS, ETC.	
UNSURVEYED LINES:	
LOT LINES	
PARCEL BOUNDARY	
MINING CLAIMS ETC.	
RAILWAY AND RIGHT OF WAY	
UTILITY LINES	
NON-PERENNIAL STREAM	
FLOODING OR FLOODING RIGHTS	
SUBDIVISION OR COMPOSITE PLAN	
RESERVATIONS	
ORIGINAL SHORELINE	
MARSH OR MUSKEG	
MINES	
TRAVERSE MONUMENT	

## DISPOSITION OF CROWN LANDS

TYPE OF DOCUMENT	SYMBOL
PATENT, SURFACE & MINING RIGHTS	
" SURFACE RIGHTS ONLY	
" MINING RIGHTS ONLY	
LEASE, SURFACE & MINING RIGHTS	
" SURFACE RIGHTS ONLY	
" MINING RIGHTS ONLY	
LICENCE OF OCCUPATION	
ORDER-IN-COUNCIL	
RESERVATION	
CANCELLED	
SAND & GRAVEL	

NOTE: MINING RIGHTS IN PARCELS PATENTED PRIOR TO MAY 6, 1913, VESTED IN ORIGINAL PATENTEE BY THE PUBLIC LANDS ACT, R.S.O. 1970, CHAP. 380, SEC. 63, SUBSEC. 1.

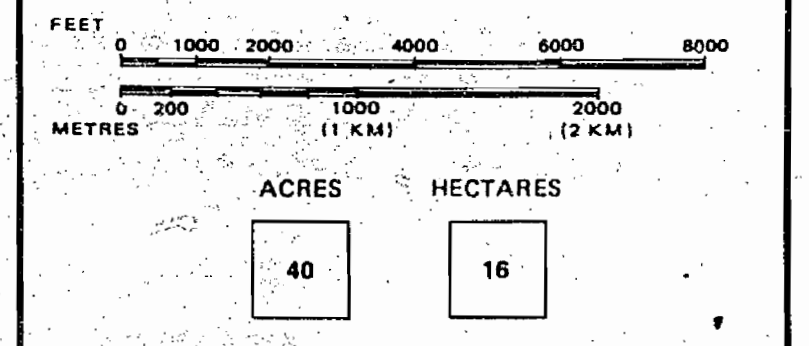
## NOTES

400' surface rights reservation along the shores of all lakes and rivers.

Areas withdrawn from stakings under Section 43 of the Mining Act, (R.S.O. 1970).

Order No.	File	Date	Disposition
W. 6/79	192608	3/4/79	S.R. & M.R.

## SCALE: 1 INCH = 40 CHAINS



## TOWNSHIP OF WINNINGTON

DISTRICT COCHRANE

MINING DIVISION PORCUPINE

Received May 8/80

Ministry of Natural Resources Ontario  
Date MAR./80  
Plan No. M-615



615

M615

m615

# PLAN OF WINNINGTON TWP.

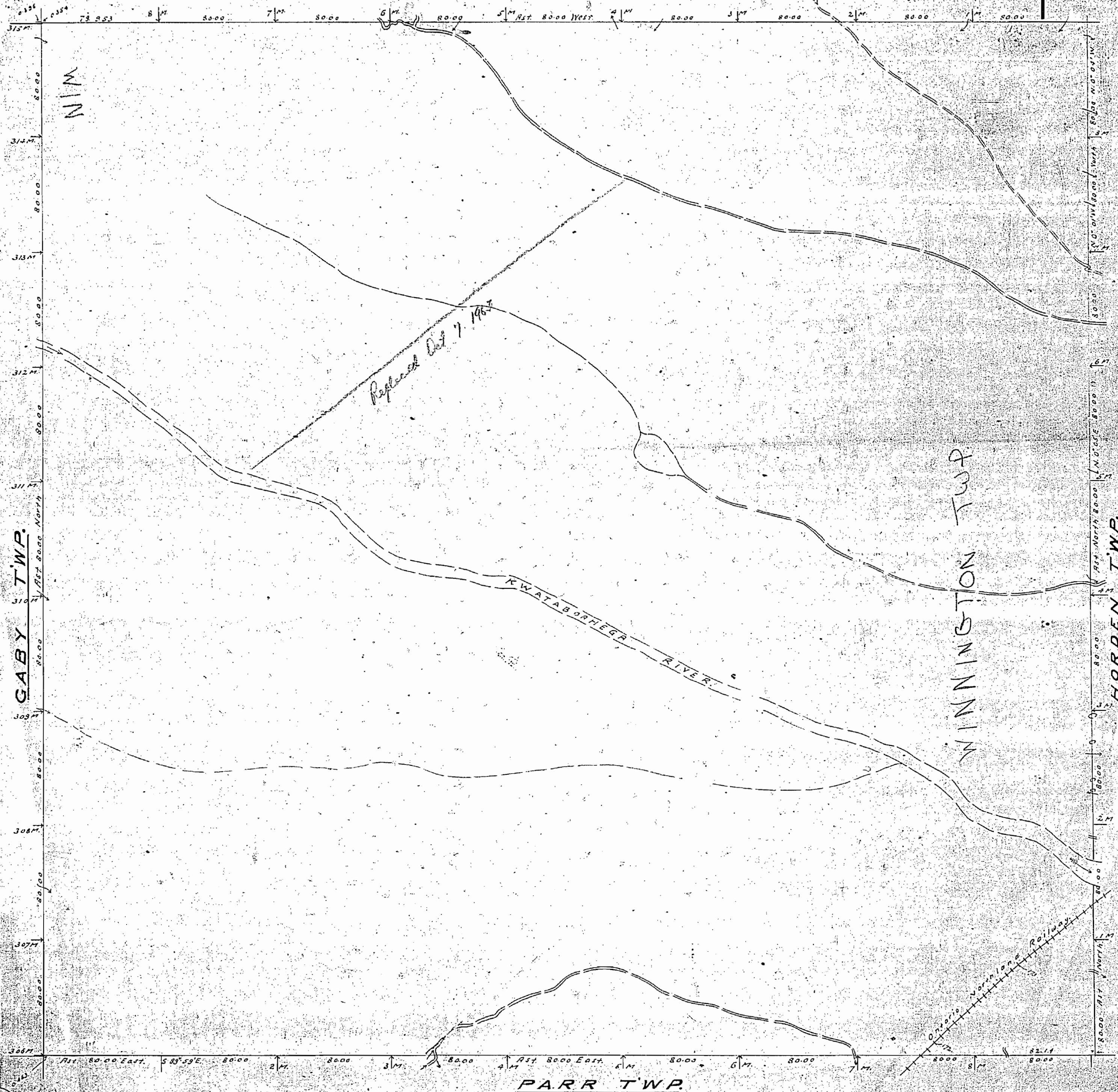
LARDER LAKE MINING DIVISION.

DISTRICT OF COCHRANE.

Scale 40 chains to an inch.

GREER TWP.

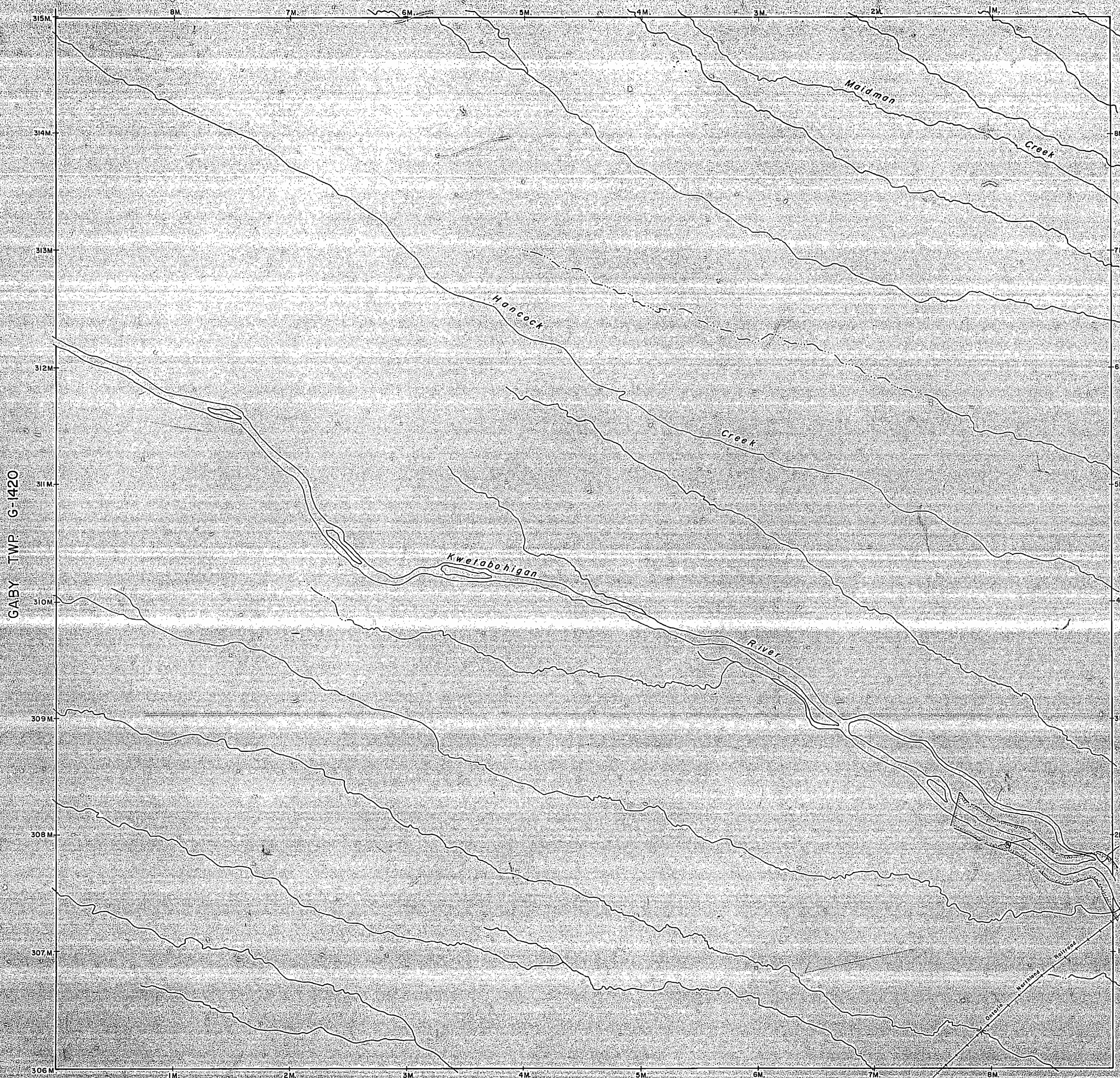
This township withdrawn from  
staking under Reg. 9/87 dated Jan 25/89



WINNINGTON TWP. M615



GREER TWP. G-1423



PARR TWP. G-1431

#### REFERENCES

AREAS WITHDRAWN FROM DISPOSITION =  
M.R.O. - MINING RIGHTS ONLY  
S.R.O. - SURFACE RIGHTS ONLY  
M + S. - MINING AND SURFACE RIGHTS  
Description Order No. Date Disposition File  
M.R.O. 6/79 3/4/79, S.R. & M.R. 193608

#### LEGEND

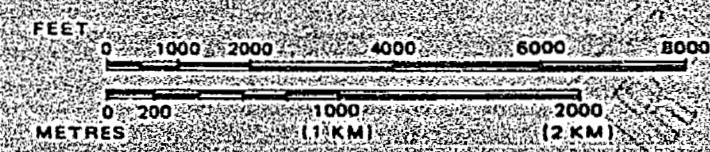
HIGHWAY AND ROUTE No.  
OTHER ROADS  
TRAILS  
SURVEYED LINES:  
TOWNSHIPS, BASE LINES, ETC.  
LOTS, MINING CLAIMS, PARCELS, ETC.  
UNSURVEYED LINES:  
LOT LINES  
PARCEL BOUNDARY  
MINING CLAIMS ETC.  
RAILWAY AND RIGHT OF WAY  
UTILITY LINES  
NON-PERENNIAL STREAM  
FLOODING OR FLOODING RIGHTS  
SUBDIVISION OR COMPOSITE PLAN  
RESERVATIONS  
ORIGINAL SHORELINE  
MARSH OR MUSKEG  
MINES  
TRAVERSE MONUMENT

#### DISPOSITION OF CROWN LANDS

TYPE OF DOCUMENT	SYMBOL
PATENT, SURFACE & MINING RIGHTS	●
" SURFACE RIGHTS ONLY	○
" MINING RIGHTS ONLY	○
LEASE, SURFACE & MINING RIGHTS	■
" SURFACE RIGHTS ONLY	■
" MINING RIGHTS ONLY	■
LICENCE OF OCCUPATION	○
ORDER-IN-COUNCIL	OC
RESERVATION	○
CANCELLED	○
SAND & GRAVEL	○

NOTE: MINING RIGHTS IN PARCELS PATENTED PRIOR TO MAY 4, 1913, VESTED IN ORIGINAL PATENTEE BY THE PUBLIC LANDS ACT, R.S.O. 1970, CHAP. 380, SEC. 63 SUBSEC. 1.

SCALE: 1 INCH = 40 CHAINS



TOWNSHIP

WINNINGTON

M.N.R. ADMINISTRATIVE DISTRICT

MOOSONEE

MINING DIVISION

PORCUPINE

LAND TITLES / REGISTRY DIVISION

COCHRANE



Land Management Branch

Date: JANUARY 1993

Number

G-1438

THE INFORMATION THAT APPEARS ON THIS MAP HAS BEEN COMPILED FROM VARIOUS SOURCES AND ACCURACY IS NOT GUARANTEED. THOSE WISHING TO STAKE MINING CLAIMS SHOULD CONSULT WITH THE MINING RECORDER, MINISTRY OF NORTHERN DEVELOPMENT AND MINES, FOR ADDITIONAL INFORMATION ON THE STATUS OF THE LANDS SHOWN HEREON.