

LARDER LAKE MINING DIV.
RECEIVED
FEB 2 1973
AM 7 18 19 10 11 12 1 2 3 4 5 16 PM

2811

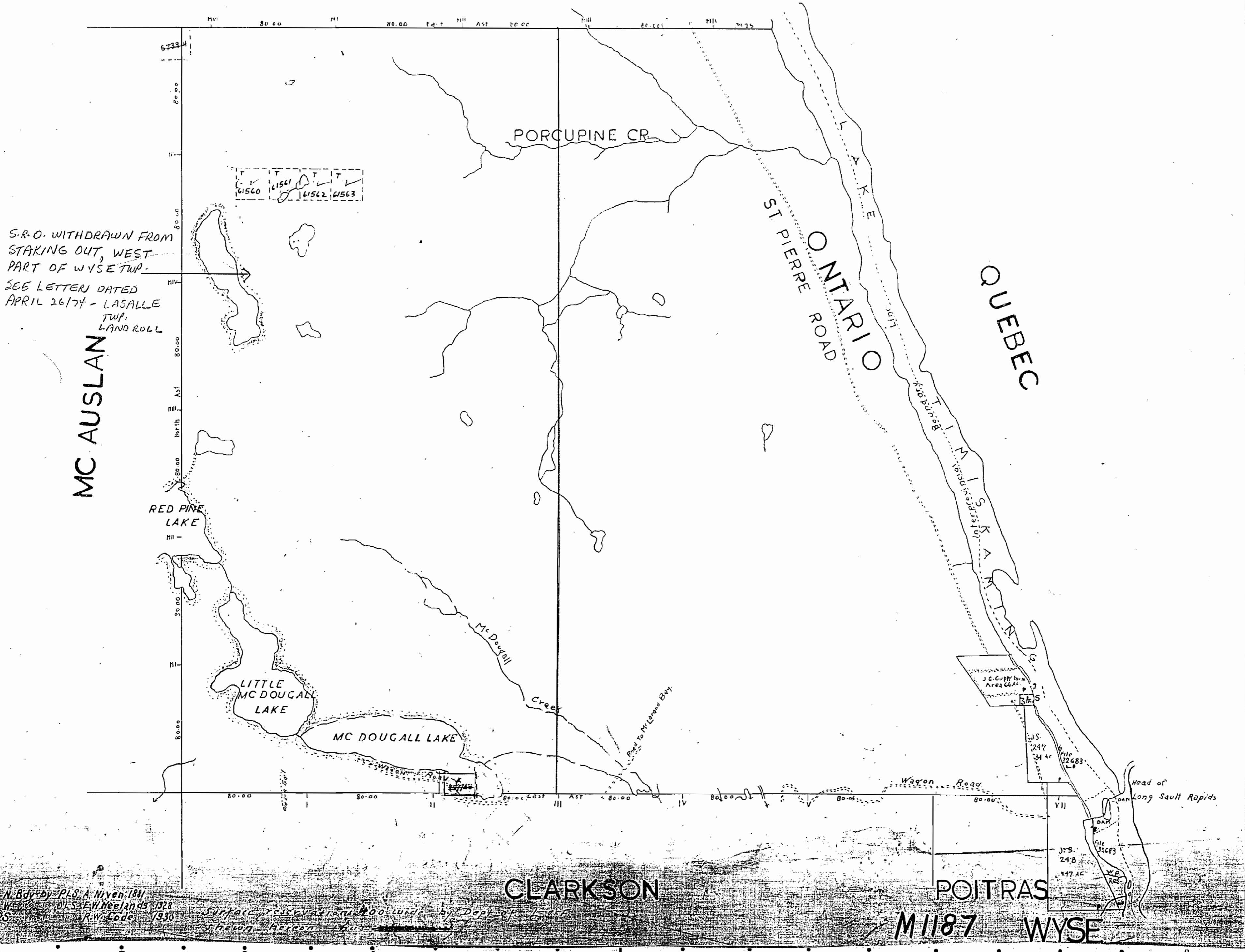
WYSE

DISTRICT OF NIPISSING

LARDER LAKE MINING DIVISION

SCALE 40 CHAINS TO AN INCH.

PARKMAN



N. Bdy by PLS. A. Niven 1881
W. D. S. E. W. Neelands 1928
S. R. W. Code 1930

CLARKSON

POITRAS

M.1187 WYSE

OFFICE USE ONLY

M.1187
ONTARIO

MINISTRY OF NATURAL RESOURCES
SURVEYS AND MAPPING BRANCH

WYSE

DISTRICT OF NIPISSING

SUDBURY MINING DIVISION

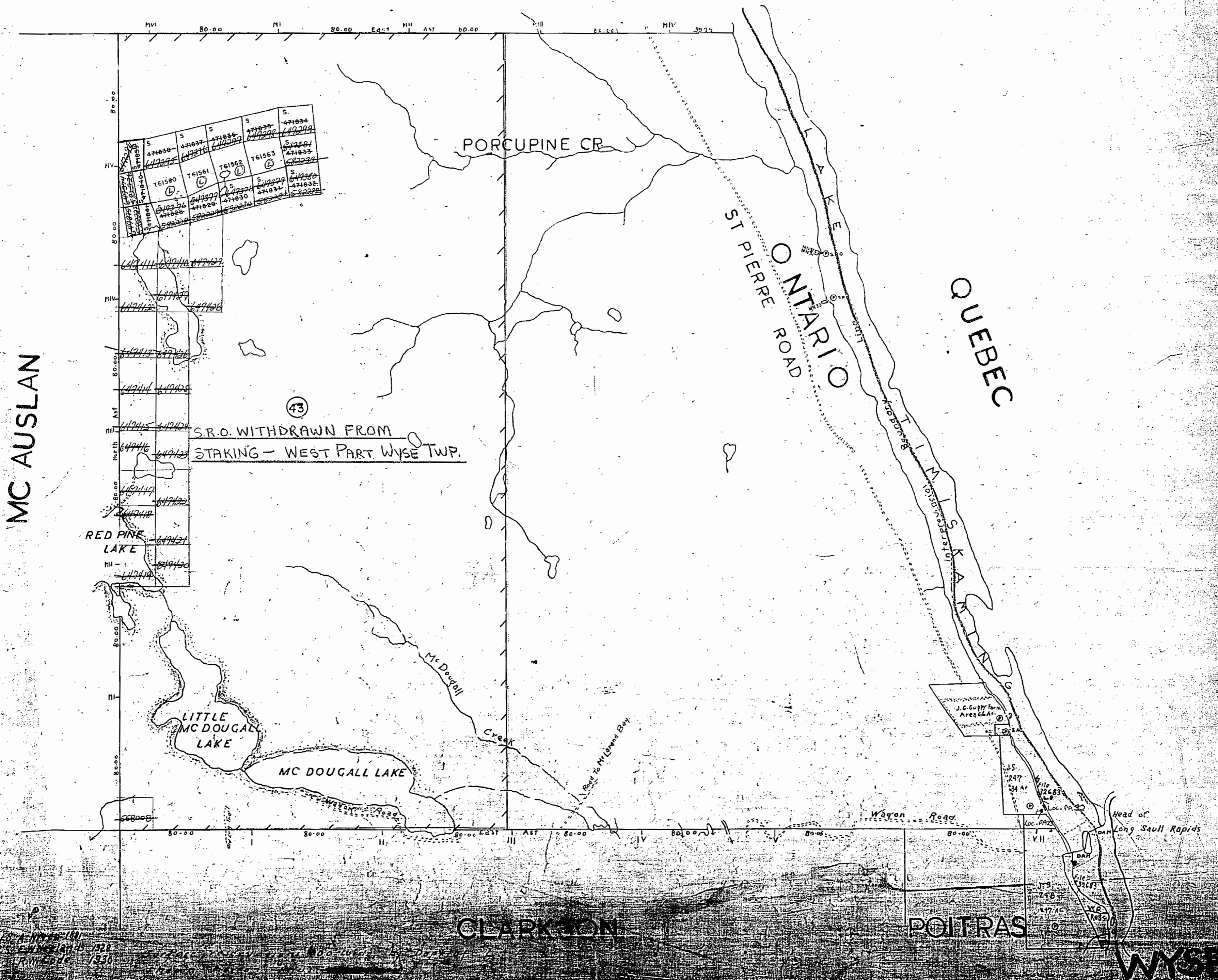
SCALE 40 CHAINS TO AN INCH.

DATE OF ISSUE
MAY 30 1978

Areas withdrawn from staking under Section
43 of the Mining Act (R.S.O. 1970).

Order No.	File	Date	Disposition
43	W.18	160707v.4	26/4/74 S.R.O.

PARKMAN



10 8 6 4 2 2 4 6 8 10

Aug. 22/84

M.1187

ONTARIO

MINISTRY OF NATURAL RESOURCES

WYSE

DISTRICT OF NIPISSING

SUDBURY MINING DIVISION

SCALE 40 CHAINS TO AN INCH.

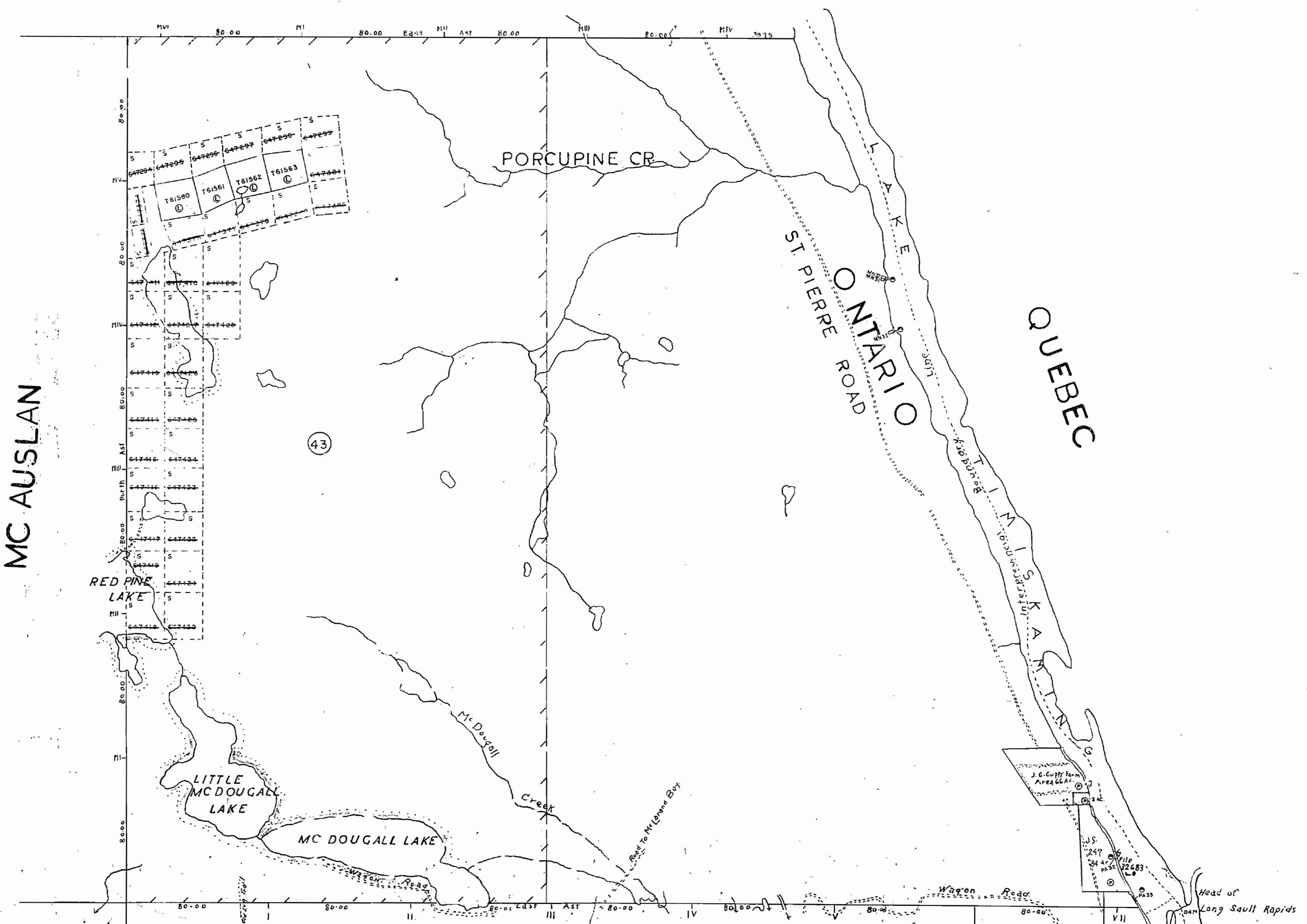


Areas withdrawn from staking under Section
43 of the Mining Act (R.S.O. 1970)

Order No.	File	Date	Dispos.
43	W.18	160707v.4	26/4/74 S.R.O.

PATENTED for S.R.O.

PARKMAN



CLARKSON

POITRAS

WYSE



Apr 1985

G-1651

G-1651

M2E TWP

M2E TWP

G-1651

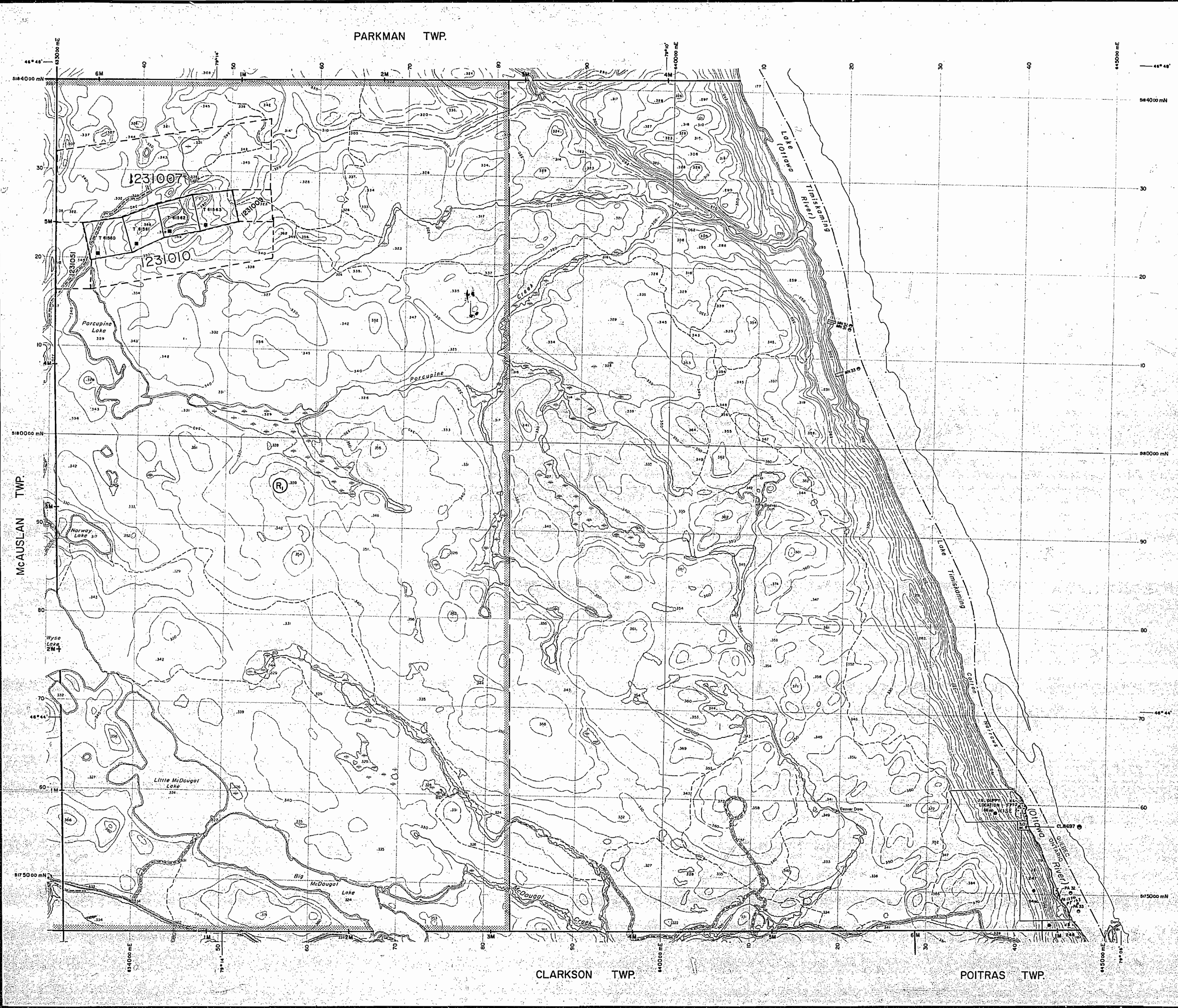
G-1651

MAP SYMBOLOLOGY

Aerial Cableway	Pipeline (shown ground)
Boundary (International)	Railroad
Boundary (District, Township, Indian Reserve)	Single Track
Approximate	Double Track
Lot, Concession	Abandoned
Approximate	Terrace
Part Boundary	Road
Bridge	Highway, County
Road, Railroad	Township
Building	Area (code of doubtful significance or significant driveway)
Chimney	Trail, Back Road (shown, not)
Cliff, Pit, Pile	Rapids
Contours	Double line river with multiple rapids
Intermittent	Double line river with multiple rapids
Approximate	Reservoir
Depression	River, Stream, Canal
Control Points	Approximate
Vertical	Spot Elevation (shown elevation)
Vertical	Tower
Culvert	Transmission Line
Falls	Power Lines
Double line river	Utility Poles
Fence, Hedge, Wall	Wharf, Dock, Pier
Feature Outline (Construction features, etc.)	Wooded Area
Flooded Land	
Lock	
Marsh or Swamp	
Moss	
Mine Head Frame	
Outcrop	

AREAS WITHDRAWN FROM DISPOSITION

M.R.O. - MINING RIGHTS ONLY	
S.R.O. - SURFACE RIGHTS ONLY	
M.+S. - MINING AND SURFACE RIGHTS	
Description	Order No. Date Disposition File
SEE 43/70	W.18 26/4/74 S.R.O. 162707 vol.4



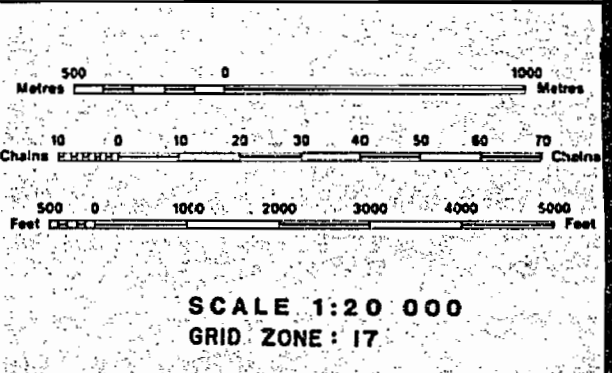
LEGEND

HIGHWAY AND ROUTE No.	
OTHER ROADS	
TRAILS	
SURVEYED LINES:	
TOWNSHIPS, BASE LINES, ETC.	
LOTS, MINING CLAIMS, PARCELS, ETC.	
UNSURVEYED LINES:	
LOT LINES	
PARCEL BOUNDARY	
MINING CLAIMS ETC.	
RAILWAY AND RIGHT OF WAY	
UTILITY LINES	
NON-PERENNIAL STREAM	
FLOODING OR FLOODING RIGHTS	
SUBDIVISION OR COMPOSITE PLAN	
RESERVATIONS	
ORIGINAL SHORELINE	
MARSH OR MUSKIE	
MINES	
TRAVERSE MONUMENT	

DISPOSITION OF CROWN LANDS

TYPE OF DOCUMENT	SYMBOL
PATENT, SURFACE & MINING RIGHTS	
" SURFACE RIGHTS ONLY	
" MINING RIGHTS ONLY	
LEASE, SURFACE & MINING RIGHTS	
" SURFACE RIGHTS ONLY	
" MINING RIGHTS ONLY	
LICENCE OF OCCUPATION	
ORDER-IN-COUNCIL	
RESERVATION	
CANCELLED	
SAND & GRAVEL	

NOTE: MINING RIGHTS IN PARCELS PATENTED PRIOR TO MAY 8, 1912, VESTED IN ORIGINAL PATENTEES BY THE PUBLIC LANDS ACT, R.S.O., 1970, CHAP. 390, SEC. 63, SUBSEC. 1.



THE INFORMATION THAT APPEARS ON THIS MAP HAS BEEN COMPILED FROM VARIOUS SOURCES AND ACCURACY IS NOT GUARANTEED. THOSE WISHING TO STAKE MINING CLAIMS SHOULD CONSULT WITH THE MINING RECORDER, MINISTRY OF NORTHERN DEVELOPMENT AND MINES, FOR ADDITIONAL INFORMATION ON THE STATUS OF THE LANDS SHOWN HEREON.

TOWNSHIP

WYSE

M.N.R. ADMINISTRATIVE DISTRICT
NORTH BAY
MINING DIVISION
SUDBURY
LAND TITLES / REGISTRY DIVISION
NIPISSING

Ministry of Natural Resources
Land Management Branch

Original Completion: FEBRUARY 1985
Revised: _____
Number: **G-1627**

1187

M.1187

LARDER LAKE
 MINING DIV.
RECEIVED
 FEB 2 1973
 AM PM
 7 18 19 10 11 12 1 2 3 4 5 6

WYSE

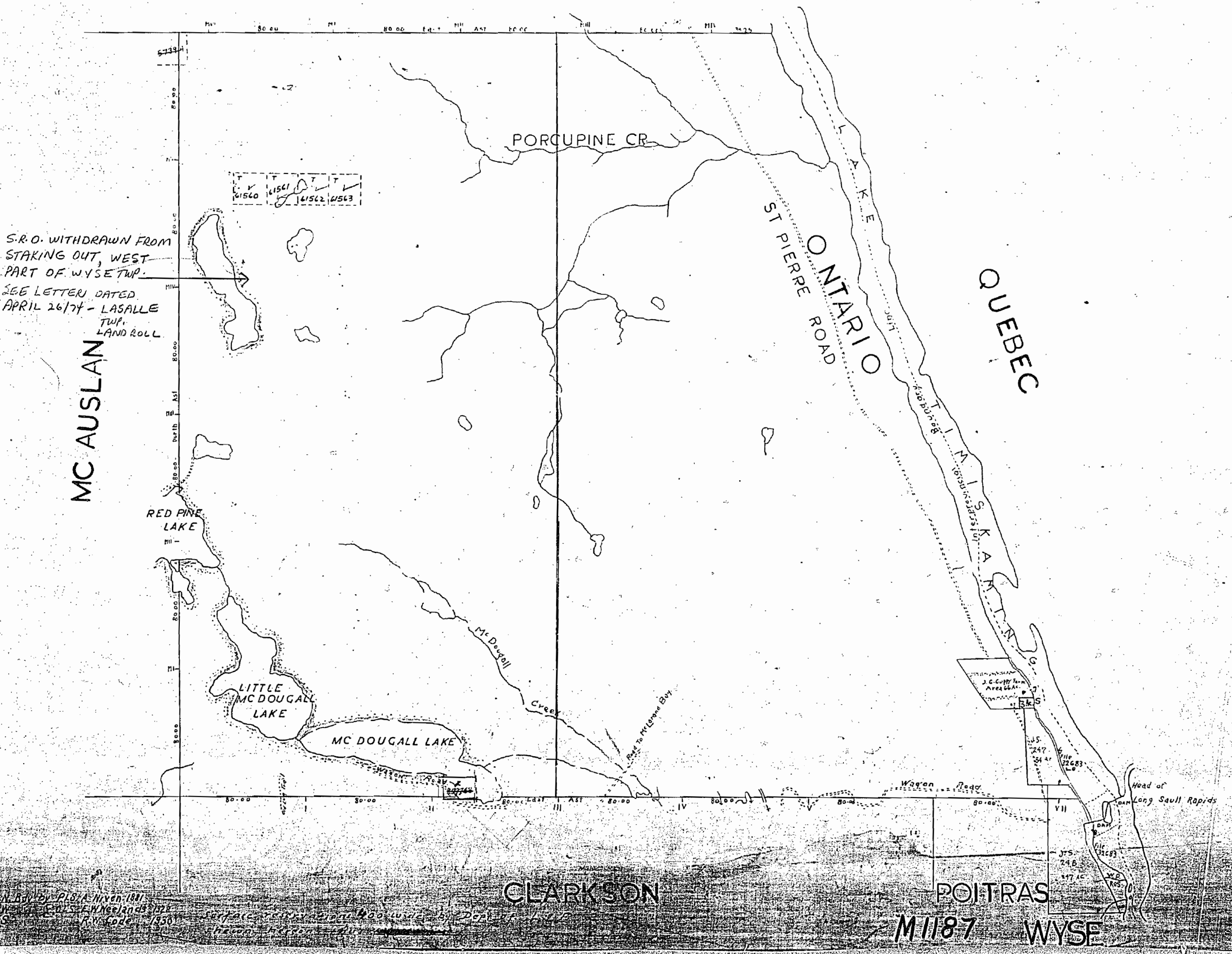
DISTRICT OF NIPISSING

LARDER LAKE MINING DIVISION

SCALE 40 CHAINS TO AN INCH.

PARKMAN

North Arrow



POITRAS

M.1187 WYSE

1187

M.1187

LARDER LAKE
MINING DIV.
RECEIVED
FEB 2 1973
AM PM
7 8 9 10 11 12 1 2 3 4 5 6

WYSE

DISTRICT OF NIPISSING

LARDER LAKE MINING DIVISION

SCALE 40 CHAINS TO AN INCH.

PARKMAN

PORCUPINE CR.

ST PIERRE ROAD

ONTARIO

QUEBEC

MC AUSLAN

RED PINE LAKE

LITTLE MCDUGALL LAKE

MCDUGALL LAKE

Mc Dougall Cree

CLARKSON

POITRAS

M.1187 WYSE

S.R.O. WITHDRAWN FROM
STAKING OUT, WEST
PART OF WYSE TWP.
SEE LETTER DATED
APRIL 26/74 - LASALLE
TWP.
LAND ROLL

41560 41561 41562 41563

J.E. Guffey Area 266 AC

J.S. 247 264 AC

J.S. 248 264 AC

J.S. 249 264 AC

J.S. 250 264 AC

J.S. 251 264 AC

J.S. 252 264 AC

J.S. 253 264 AC

N. Rydyk by PLS. A. Niven - 1981
S. Rydyk by PLS. A. Niven - 1982
S. Rydyk by PLS. A. Niven - 1983
S. Rydyk by PLS. A. Niven - 1984
S. Rydyk by PLS. A. Niven - 1985
S. Rydyk by PLS. A. Niven - 1986
S. Rydyk by PLS. A. Niven - 1987
S. Rydyk by PLS. A. Niven - 1988
S. Rydyk by PLS. A. Niven - 1989
S. Rydyk by PLS. A. Niven - 1990



M.1187
ONTARIO

MINISTRY OF NATURAL RESOURCES
SURVEYS AND MAPPING BRANCH

WYSE

DISTRICT OF NIPISSING

SUBBURY MINING DIVISION

SCALE 40 CHAINS TO AN INCH.

Areas withdrawn from staking under Section

43 of the Mining Act (R.S.O. 1970).

Order No.	File	Date	Disposition
33	W.18	160707-4	26/4/74 S.R.O.

PARKMAN

SURFACE RIGHTS ONLY
WITHDRAWN FROM
STAKING. WEST PART
OF WYSE TWP.
SEE LETTER APRIL 26/74
IN LASALLE TWP. LANDROLL

471839	✓	471832	✓	471837	✓	471836	✓	471835	✓	471834	✓
471840	✓	61560	61561	61562	61563	471833	✓				
471841	✓	471828	471829	471850	471831	471832	✓				

MC AUSLAN

RED PINE
LAKE

LITTLE
MC DOUGALL
LAKE

MC DOUGALL LAKE

PORCUPINE CR

ST PIERRE ROAD

ONTARIO

QUEBEC

CLARKSON

POITRAS

WYSE

OFFICE USE ONLY

M.1187
ONTARIO

MINISTRY OF NATURAL RESOURCES

SURVEYS AND MAPPING BRANCH

WYSE

DISTRICT OF NIPISSING

SUDBURY MINING DIVISION

SCALE 40 CHAINS TO AN INCH.

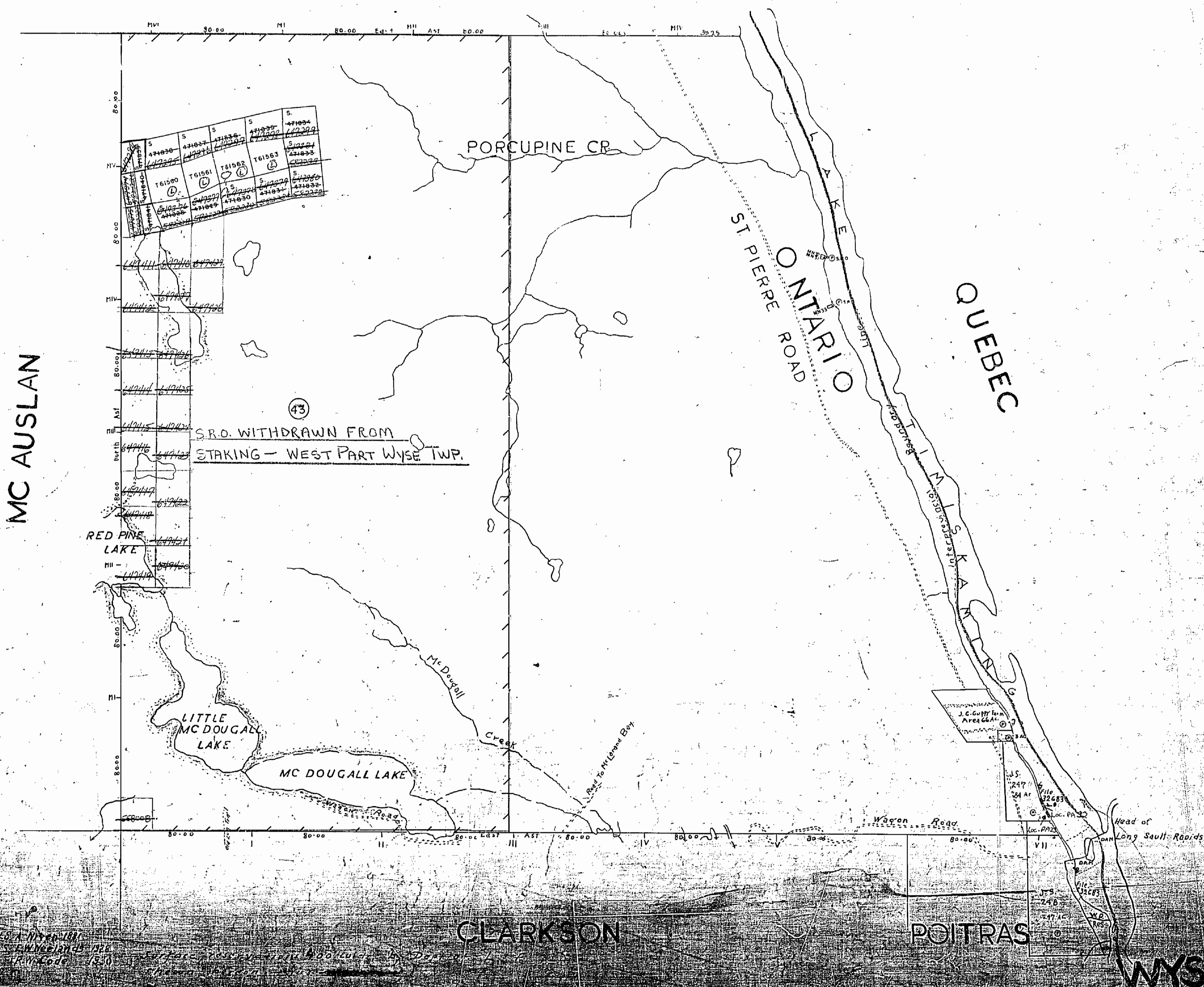
Areas withdrawn from staking under Section

43 of the Mining Act (R.S.O. 1970)

Order No.	File	Date	Disposition
43	W.18	16070/v.4	26/4/74 S.R.O.

DATE OF ISSUE
MAY 30 1978

PARKMAN



MC AUSLAN

CLARKSON

POITRAS

WYSE

W Y S E
 DISTRICT OF NIPISSING
 SUDBURY MINING DIVISION
 SCALE 40 CHAINS TO AN INCH.

Areas withdrawn from staking under Section
 43 of the Mining Act (R.S.O. 1970).

Order No. File Date Dispo.
 W.18 1507074.4 26/4/74 S.R.O.

PATENTED for S.R.O.

PARKMAN

