

ORDER

SECTION 35, THE MINING ACT, R.S.O. 1990

ORDER NO. O-L-05/16

The SURFACE and MINING RIGHTS of the area outlined in red on the attached sketch, in the Township of Nicol (G-3692), Larder Lake Mining Division, containing 32 hectares, more or less, are hereby REOPENED to prospecting, staking out, sale or lease.

This area was originally withdrawn by Order W-L-79/15, while the Ministry determined the status of the land.

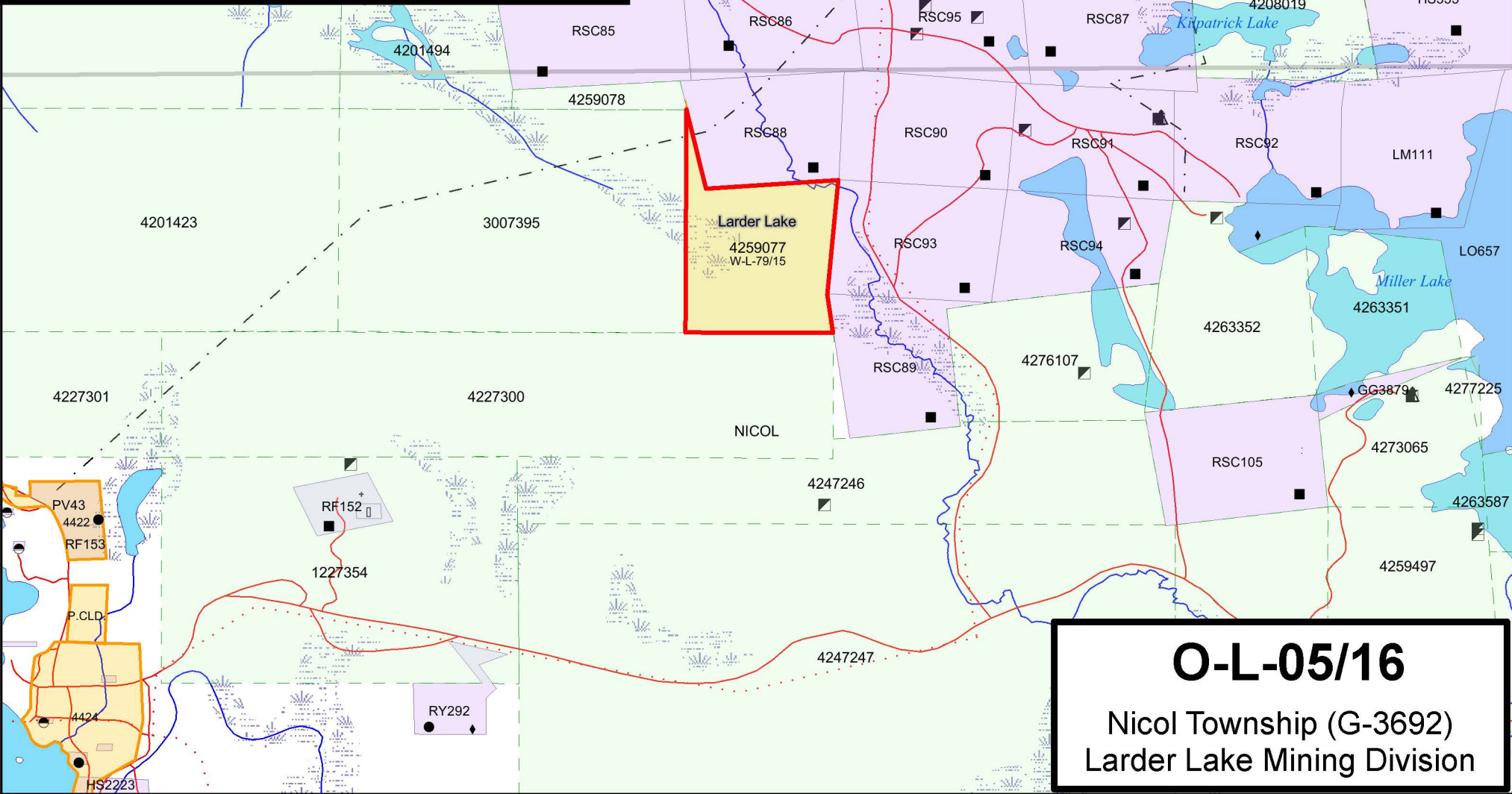
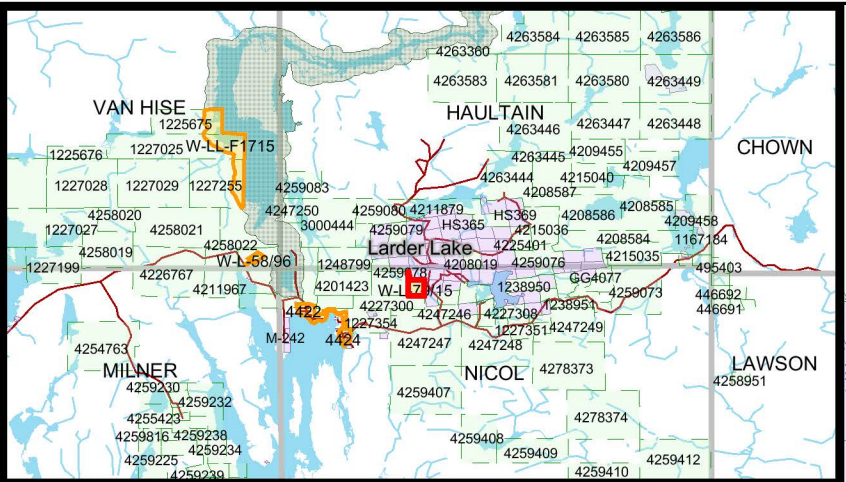
This order comes into effect upon signing.

Date: January 26/16

Time: 3:25 p.m.

ORIGINAL SIGNED BY "BRIAN LAINE"
for Tony Scarr, Provincial Mining Recorder
Mining Lands Section
Mines and Minerals Division

Copies:
Senior Manager, Mining Lands Section, MNDM, Sudbury
Provincial Mining Recorder, MNDM, Sudbury
Provincial Lands Specialist - CLR



O-L-05/16
 Nicol Township (G-3692)
 Larder Lake Mining Division