

**ORDER**

**SECTION 35, THE MINING ACT, R.S.O. 1990**

**ORDER NO. O-L-06/19**

The SURFACE and MINING RIGHTS of the area outlined in red on the attached sketch, being the cells listed on the attached schedule A, situated in the Townships of Bucke (G-3413), Coleman (G-3418) and Lorrain (G-3438), Larder Lake Mining Division, were withdrawn from prospecting, mining claim registration, sale and lease by Order W-L-43/18.

Withdrawal Order W-L-43/18 is hereby revoked and the lands are reopened for prospecting, mining claim registration, sale and lease, unless the lands are otherwise not open for these activities under any other provision of the Mining Act.

This order comes into effect on February 5, 2019 at 10:00 a.m. Eastern Standard Time (EST)

**“Original signed by Scott Cousineau”**

\_\_\_\_\_  
Scott Cousineau, Provincial Mining Recorder  
Mining Lands Section  
Mines and Minerals Division

Copies:  
Senior Manager, Mining Lands Section, MNDM, Sudbury  
Provincial Mining Recorder, MNDM, Sudbury  
Provincial Lands Specialist - CLR

**Schedule A – O-L-06/19**

Cell Numbers:

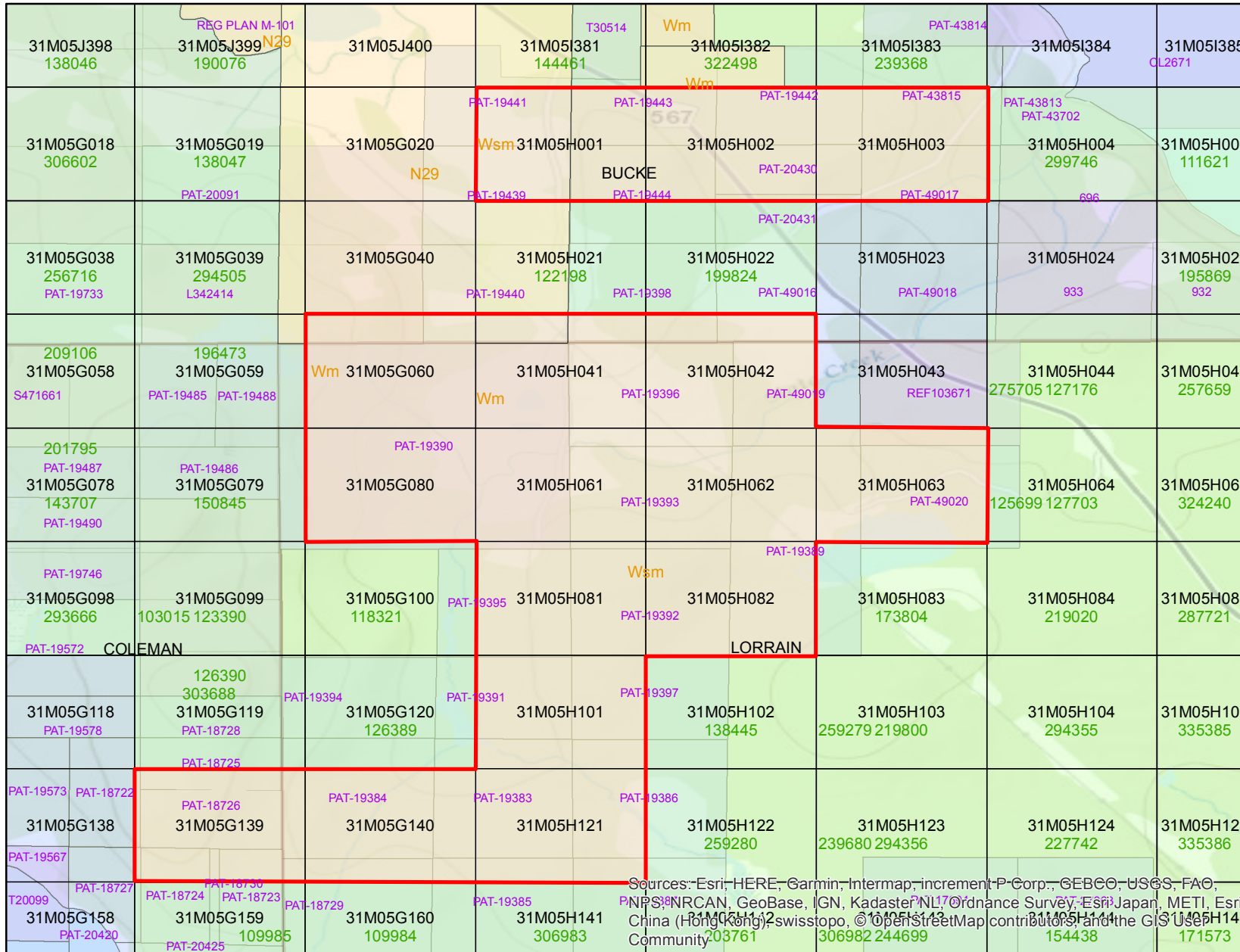
31M05H001  
31M05H002  
31M05H003  
31M05H041  
31M05H042  
31M05G080  
31M05H061  
31M05H062  
31M05H063  
31M05H081  
31M05H082  
31M05H101  
31M05G139  
31M05G140  
31M05H121

# MINISTRY OF ENERGY, NORTHERN DEVELOPMENT AND MINES

Notes:  
Townships of Bucke (G-3413),  
Coleman (G-3418) and Lorrain (G-3438)  
Larder Lake Mining Division

MLAS Map Viewer

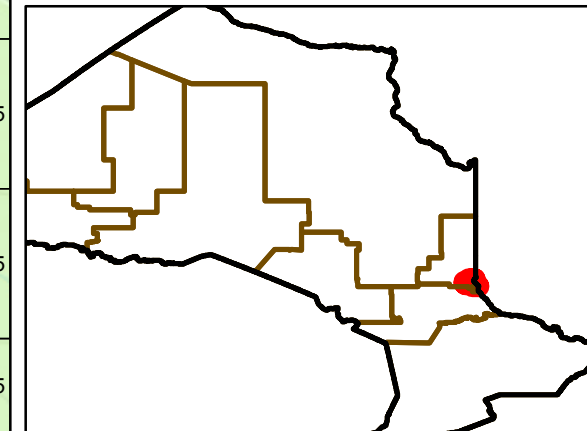
Order No. O-L-06/19



## Legend

- O-L-06/19
- Alienations
- Cell Claims
- Non-Mining Land Tenure
- Mining Land Tenure
- MENDM Administrative Boundaries
- MENDM Mining Divisions
- Provincial Grid Cell

## Overview



Sources: Esri, HERE, Garmin, Intermap, increment P Corp., GEBCO, USGS, FAO, PNP, NRCAN, GeoBase, IGN, Kadaster NL, Ordnance Survey, Esri Japan, METI, Esri China (Hong Kong), Swisstopo, © OpenStreetMap contributors, and the GIS User Community

0 0.375 0.75 1.5 Kilometers

Projection: Web Mercator

