

ORDER**SECTION 35, THE MINING ACT, R.S.O. 1990****ORDER NO. O-L-08/17**

The SURFACE and MINING RIGHTS of the area outlined in red on the attached sketch, situated in the Clifford Township (G-3620), in the Larder Lake Mining Division, containing 16 hectares, more or less, are hereby REOPENED to prospecting, staking out, sale or lease.

This area was originally withdrawn by Order W-L-30/16, while the Ministry determined the status of the lands.

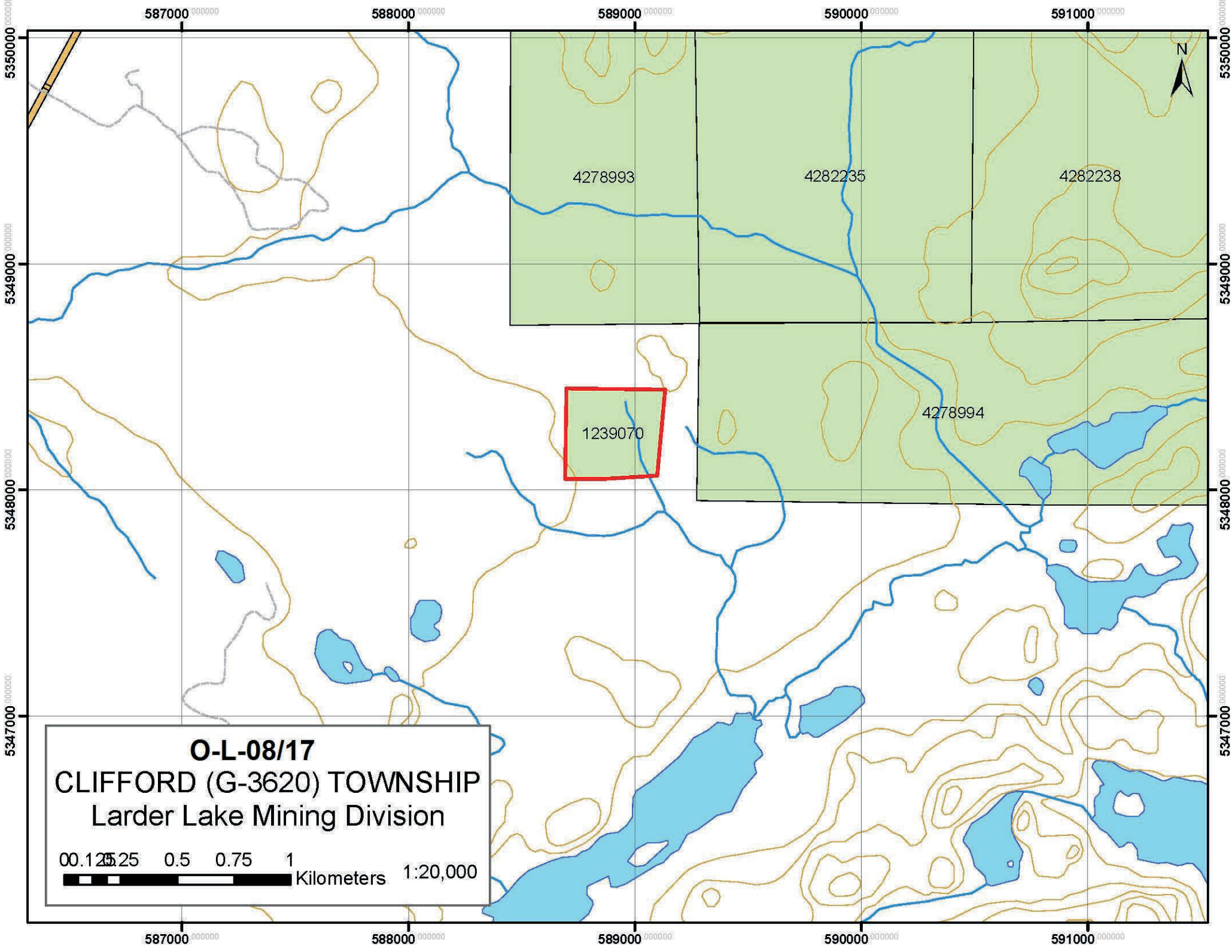
This order comes into effect upon signing.

Date: JAN 27 2017

Time: 16:46

ORIGINAL SIGNED BY RAY MACCARTHY
for Tony Scarr, Provincial Mining Recorder
Mines and Minerals Division

Copies:
Senior Manager, Mining Lands Section, MNDM, Sudbury
Provincial Mining Recorder, MNDM, Sudbury
Provincial Lands Specialist – CLR



O-L-08/17
CLIFFORD (G-3620) TOWNSHIP
Larder Lake Mining Division

0 0.125 0.25 0.5 0.75 1
Kilometers 1:20,000