

ORDER

SECTION 35, THE MINING ACT, R.S.O. 1990

ORDER NO. O-L-47/19

The SURFACE and MINING RIGHTS of the area outlined in red on the attached sketch, situated in the Township of Coleman, were withdrawn from prospecting, mining claim registration, sale and lease by Order W-L-97/19.

Withdrawal Order W-L-97/19 is hereby revoked and the lands are reopened for prospecting, mining claim registration, sale and lease, unless the lands are otherwise not open for these activities under any other provision of the Mining Act.

This order comes into effect on October 22, 2019 at 10:00 a.m. eastern standard time or eastern daylight saving time, as the case may be.

Originally Signed by Scott Cousineau
Scott Cousineau, Provincial Mining Recorder
Mining Lands Section
Mines and Minerals Division

Copies:
Senior Manager, Mining Lands Section, ENDM, Sudbury
Provincial Mining Recorder, ENDM, Sudbury
Provincial Lands Specialist - CLR

Cell Numbers:

31M05F328, 31M05F329, 31M05F308, 31M05F309, 31M05F310, 31M05F311, 31M05F312,
31M05F288, 31M05F289, 31M05F290, 31M05F291, 31M05F292, 31M05F268, 31M05F269,
31M05F270, 31M05F271, 31M05F272, 31M05F251, 31M05F252, 31M05F253, 31M05F254,
31M05F255

Ontario



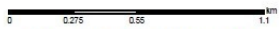
Date: 09/25/2019

MINISTRY OF
**ENERGY, NORTHERN DEVELOPMENT
AND MINES**

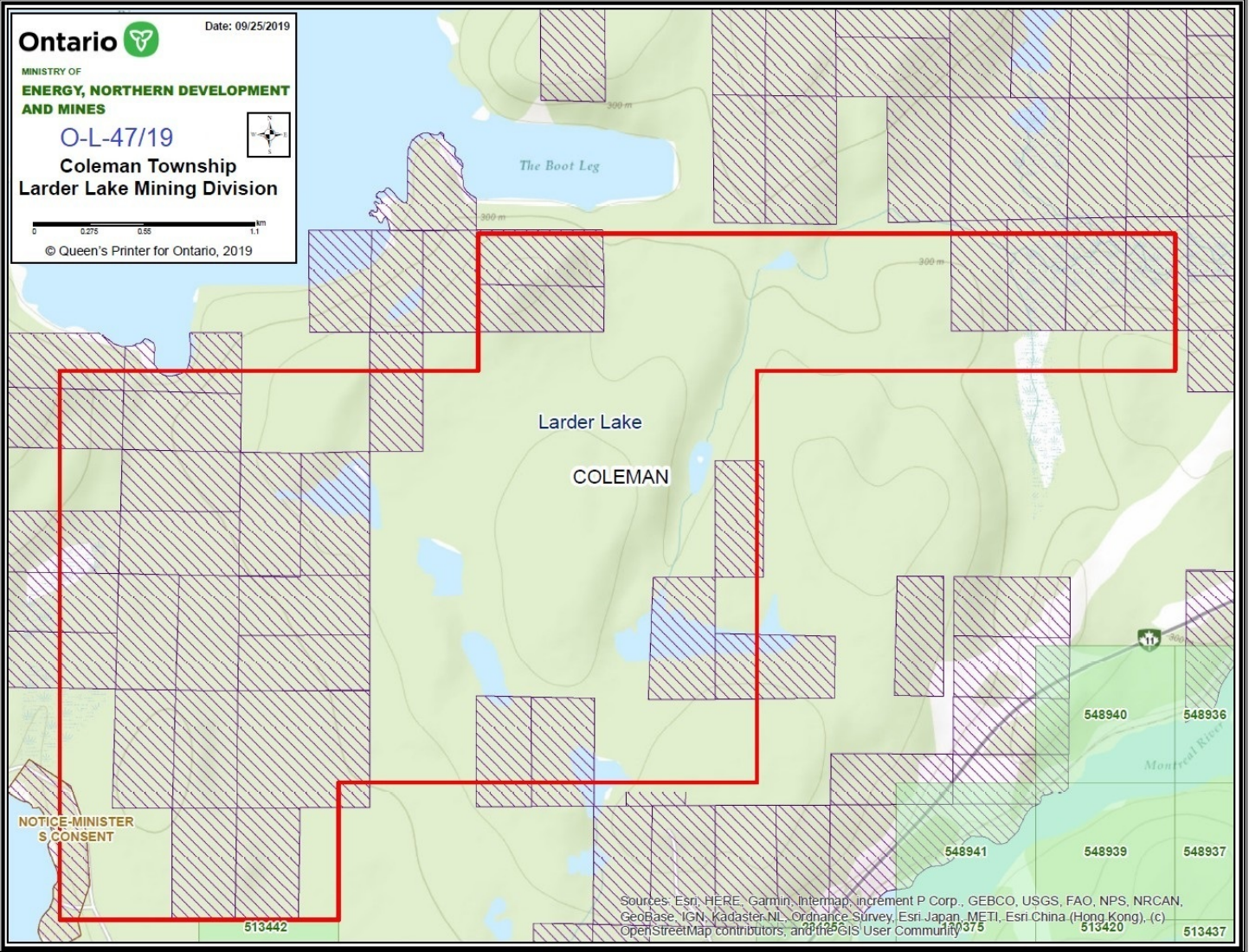
O-L-47/19



**Coleman Township
Larder Lake Mining Division**



© Queen's Printer for Ontario, 2019



Sources: Esri, HERE, Garmin, Intermap, increment P Corp., GEBCO, USGS, FAO, NPS, NRCAN, GeoBase, IGN, Kadaster NL, Ordnance Survey, Esri Japan, METI, Esri China (Hong Kong), (c) OpenStreetMap contributors, and the GIS User Community