

**ORDER****SECTION 35, THE MINING ACT, R.S.O. 1990****ORDER NO. O-P-28/18**

The SURFACE and MINING RIGHTS of the areas outlined in red on the attached sketches, situated in the Township of Byng (G-2294), Porcupine Mining Division, are hereby REOPENED to prospecting, staking out, sale or lease.

These areas were originally withdrawn by Order W-64/76.

This order comes into effect upon signing.

Date: Feb 20, 2018

Originally signed by Patrick Brown

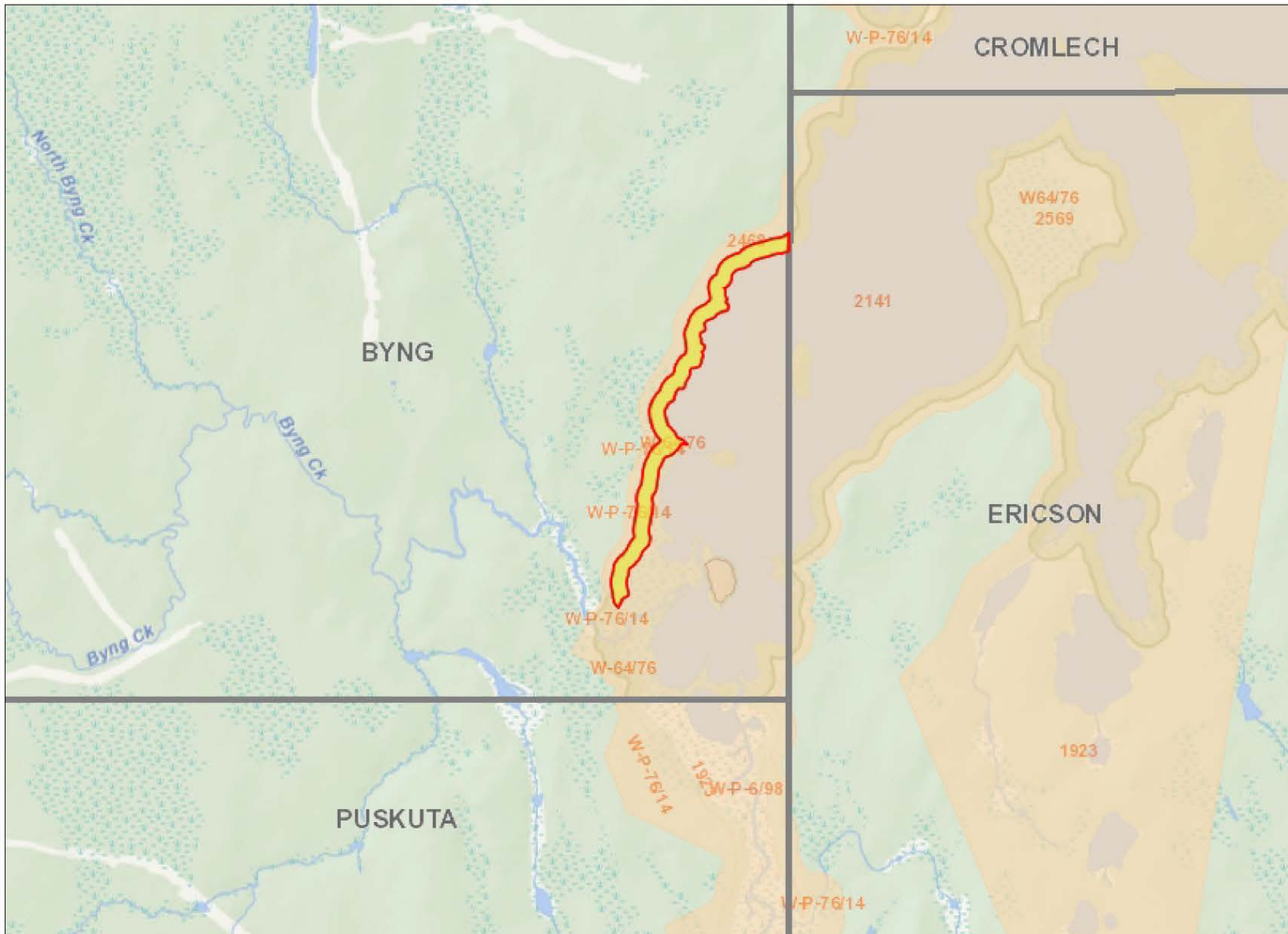
Time: 12:07 pm

\_\_\_\_\_  
Patrick Brown, A/Provincial Mining Recorder  
Mining Lands Section  
Mines and Minerals Division

Copies:  
Senior Manager, Mining Lands Section, MNDM, Sudbury  
Provincial Mining Recorder, MNDM, Sudbury  
Provincial Lands Specialist - CLR

**Notes:**

Description: 400 FT W-64/76 OCT.22/76 S.R.&M.R.  
Either side of Brunswick River, Shores of Brunswick & Foster Lakes



### Legend

**Administration Boundaries**

- Mining Divisions
- Resident Geologist District
- Townships and Areas
- UTM Grid
- Geographic Lot Fabric
- Other Federal Land

**Mineral Tenure Grid**

- OMTG Tenure Grid

**Alienations**

- Withdrawal
- Notice

**Unpatented Claim**

- Active
- Reconciled
- Pending

**Disposition**

- Disposition

**Disposition Symbols**

- Camp
- Disposition Unknown/Pending
- Freehold Patent Mining Rights Only
- Freehold Patent Surface Rights Only
- Freehold Patent Surface and Mining Rights
- Land Use Permit
- Leasehold Patent Mining Rights Only
- Leasehold Patent Surface Rights Only
- Leasehold Patent Surface and Mining Rights
- License of Occupation Mining Use Only
- License of Occupation Surface Use Only
- License of Occupation Surface and Mining Rights
- License of Occupation Uses Not Specified
- Order in Council
- Tower
- WPLA

**Geology Layers**

- AMIS Sites
- AMIS Features
- Drill Holes
- Mineral Occurrences



Projection: Web Mercator



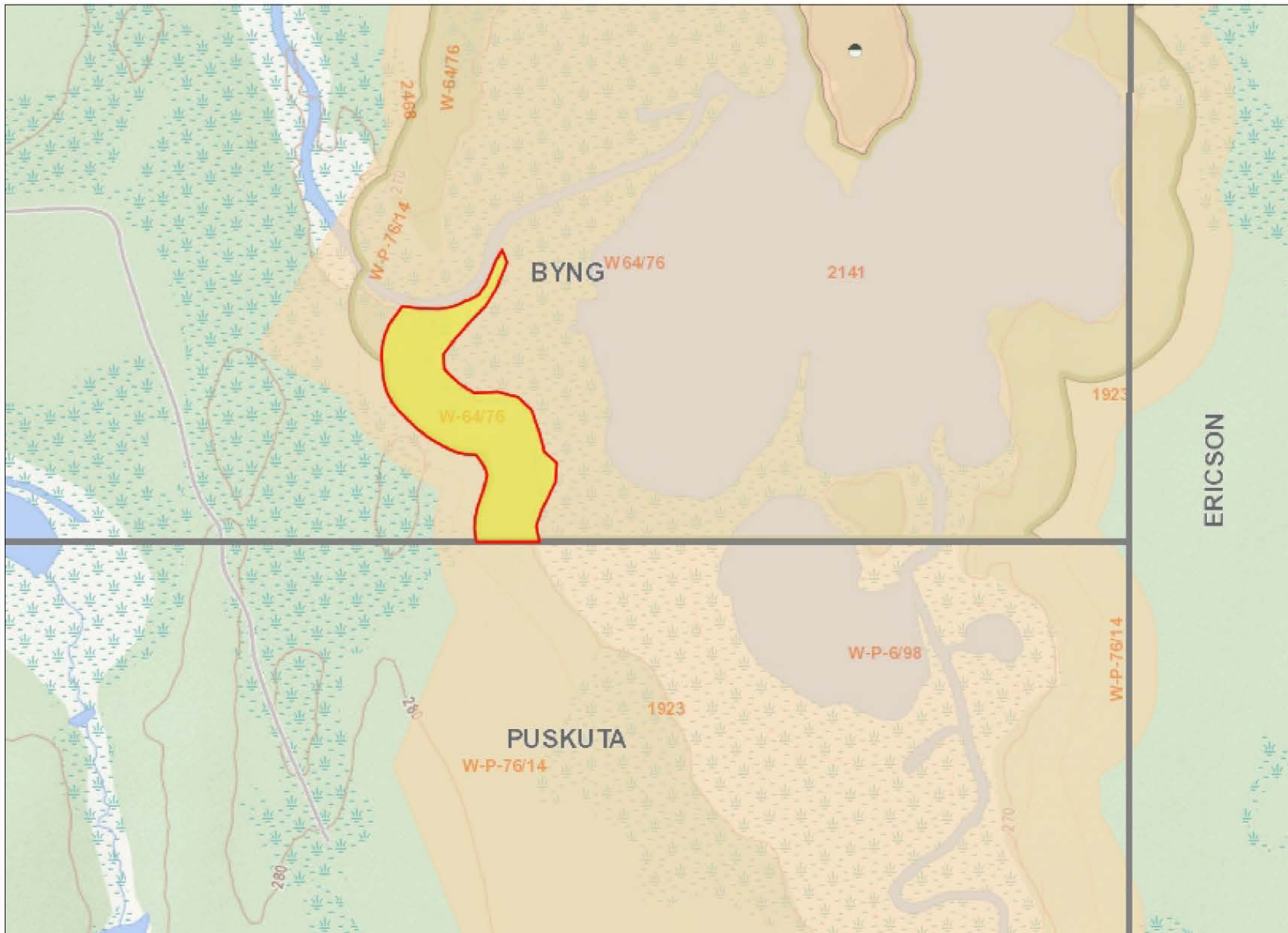
The Ontario Ministry of Northern Development and Mines shall not be liable in any way for the use of, or reliance upon, this map or any information on this map. This map should not be used for: navigation, a plan of survey, routes, nor locations.

Imagery Copyright Notices: Ontario Ministry of Natural Resources and Forestry; NASA Landsat Program; First Base Solutions Inc.; Aéro-Photo (1961) Inc.; DigitalGlobe Inc.; U.S. Geological Survey.



**Notes:**

Description: 400 FT W-64/76 OCT.22/76 S.R.&M.R.  
Either side of Brunswick River, Shores of Brunswick & Foster Lakes



### Legend

**Administration Boundaries**

- Mining Divisions
- Resident Geologist District
- Townships and Areas
- UTM Grid
- Geographic Lot Fabric
- Other Federal Land

**Mineral Tenure Grid**

- OMTG Tenure Grid

**Alienations**

- Withdrawal
- Notice

**Unpatented Claim**

- Active
- Reconciled
- Pending

**Disposition**

- Disposition

**Disposition Symbols**

- Camp
- Disposition Unknown/Pending
- Freehold Patent Mining Rights Only
- Freehold Patent Surface Rights Only
- Freehold Patent Surface and Mining Rights
- Land Use Permit
- Leasehold Patent Mining Rights Only
- Leasehold Patent Surface Rights Only
- Leasehold Patent Surface and Mining Rights
- License of Occupation Mining Use Only
- License of Occupation Surface Use Only
- License of Occupation Surface and Mining Rights
- License of Occupation Uses Not Specified
- Order in Council
- Tower
- WPLA

**Geology Layers**

- AMIS Sites
- AMIS Features
- Drill Holes
- Mineral Occurrences



Projection: Web Mercator



The Ontario Ministry of Northern Development and Mines shall not be liable in any way for the use of, or reliance upon, this map or any information on this map. This map should not be used for: navigation, a plan of survey, routes, nor locations.

© Queen's Printer for Ontario, 2016

Imagery Copyright Notices: Ontario Ministry of Natural Resources and Forestry; NASA Landsat Program; First Base Solutions Inc.; Aéro-Photo (1961) Inc.; DigitalGlobe Inc.; U.S. Geological Survey.

© Copyright for Ontario Parcel data is held by Queen's Printer for Ontario and its licensors and may not be reproduced without permission.

