

**ORDER****SECTION 35, THE MINING ACT, R.S.O. 1990****ORDER NO. O-P-39/17**

The SURFACE and MINING RIGHTS of the area outlined in red on the attached sketch, in Ogden Township (G-3979), Porcupine Mining Division, containing 16 hectares, more or less, are hereby REOPENED to prospecting, staking out, sale or lease.

This area was originally withdrawn by Order W-P-35/17, while the Ministry determined the status of the land.

This order comes into effect upon signing.

Date: JUL 26 2017

Time: 12:41 pm

ORIGINAL SIGNED BY PATRICK BROWN

---

Patrick Brown, A/Provincial Mining Recorder  
Mining Lands Section  
Mines and Minerals Division

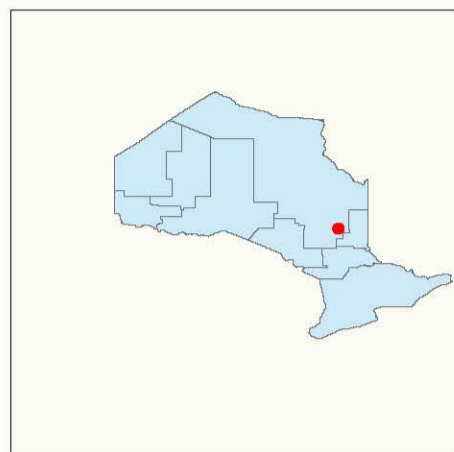
Copies:

Senior Manager, Mining Lands Section, MNDM, Sudbury

Provincial Mining Recorder, MNDM, Sudbury

Provincial Lands Specialist - CLR

O-P 39/17  
Ogden Township (G-3979)  
Porcupine Mining Division

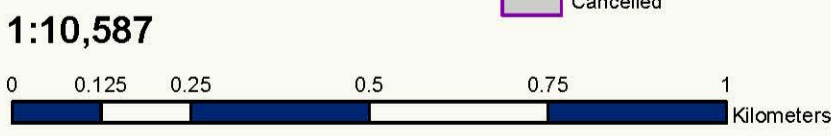
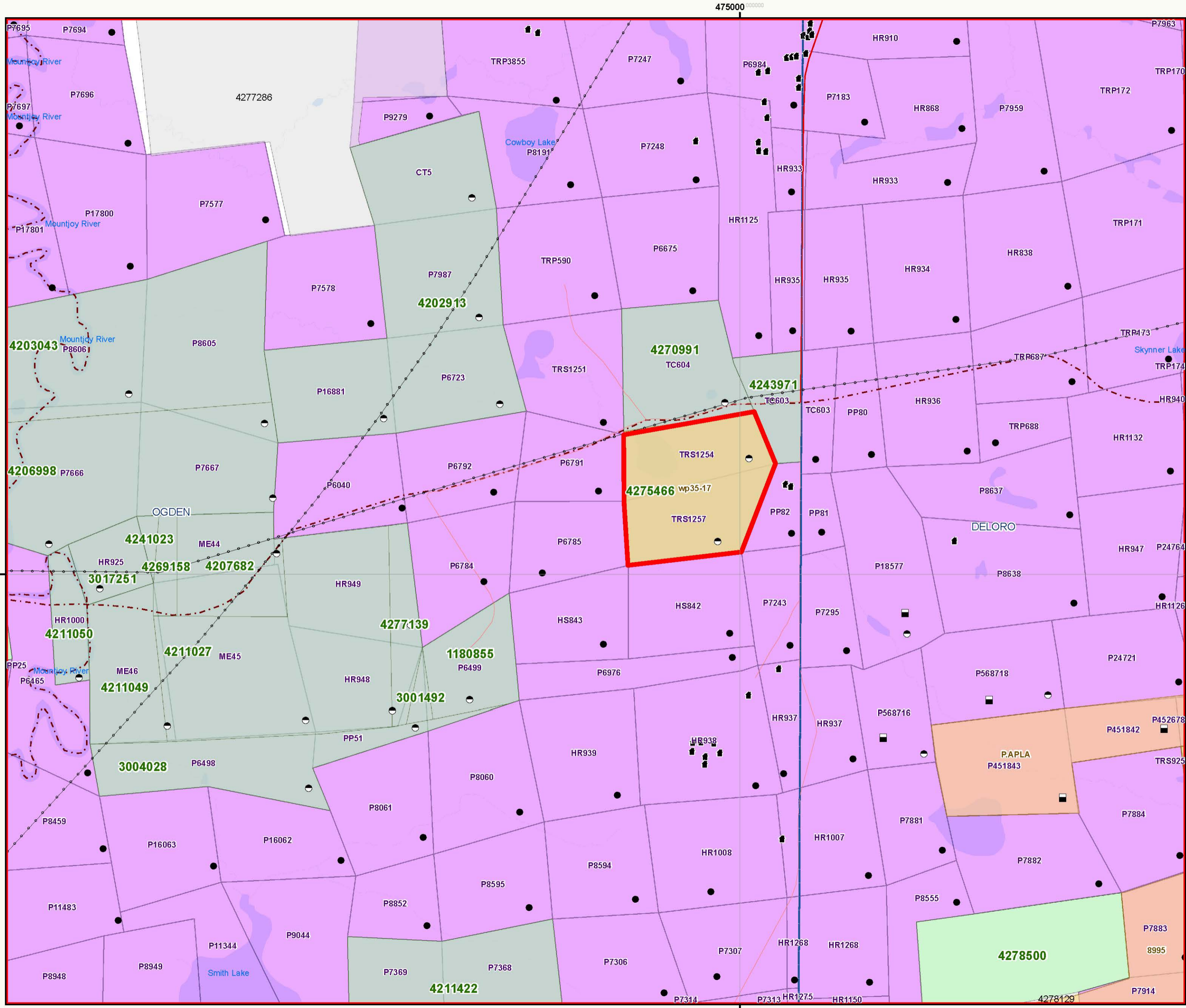


**Base Features**

- Area to be Reopened
- Tower
- Work Camp
- Utility Site
- MNDM Administrative Boundaries
- Lot Fabric Improved
- Utility Line - Hydro Line**
  - Transmission Line
  - Ligne de transmission
  - Pipeline
  - Pipeline
- Road Segment**
  - Other Existing Roads
  - Autres routes actuelles
  - Primary
  - Route principale
  - Highway
  - Autoroute
  - Trail Segment
  - Railway Segment
- Airports**
  - Airports
  - Airport Airstrip
  - Airport Official
- Federal Protected Area**
  - Federal Protected Area
  - Federal Land Other
  - Indian Reserve
- Waterbodies**
  - River / Stream
  - Waterbody
- Provincial Park Regulated**
  - Provincial Park Regulated
  - Conservation Reserve Regulated

**Mining Lands Features**

- Dispositions Symbols**
  - Freehold Patent, S+M
  - Freehold Patent, SRO
  - Freehold Patent, MRO
  - Leasehold Patent, S+M
  - Leasehold Patent, SRO
  - Leasehold Patent, MRO
  - Licence of Occupation, S+M
  - Licence of Occupation, SRO
  - Licence of Occupation, MRO
  - Licence of Occupation, not specified
  - Tower
  - Camp
  - Unknown
- MNDM Alienations**
  - Order in Council
  - Land Use Permit
  - WPLA
  - WPLA
- MNDM Mining Claims**
  - Active
  - Cancelled
  - Pending
- MNDM Dispositions**
  - Active
  - Cancelled



This map should not be relied on as a precise indicator of routes or locations, nor as a guide to navigation. The Ontario Ministry of Natural Resources (OMNR) shall not be liable in any way for the use of, or reliance upon, this map or any information on this map.

Il ne faut pas présumer que cette carte indique précisément les voies et les lieux, ni s'en servir comme guide à la navigation. Le ministère des Richesses naturelles de l'Ontario (MRN) n'assume aucune responsabilité quelle qu'elle soit relativement à l'utilisation de cette carte ou de la confiance qui serait mise en celle-ci.