

ORDER

SECTION 35, THE MINING ACT, R.S.O. 1990

ORDER NO. O-S-87/20

The SURFACE RIGHTS and MINING RIGHTS of the area outlined in red on the attached sketch, situated in the Townships of Scholes and Afton, Sudbury Mining Division, containing 418.6 hectares more or less, were withdrawn from prospecting, mining claim registration, sale and lease by Order W-S-54/20 while the Ministry determined the status of the lands.

Withdrawal Order W-S-54/20 is hereby revoked and the lands are REOPENED for prospecting, mining claim registration, sale and lease, unless the lands are otherwise not open for these activities under any other provision of the Mining Act.

This order comes into effect upon signing.

Date: October 14, 2020

Originally signed by Scott Cousineau

Scott Cousineau, Provincial Mining Recorder

Mining Lands Section

Mines and Minerals Division

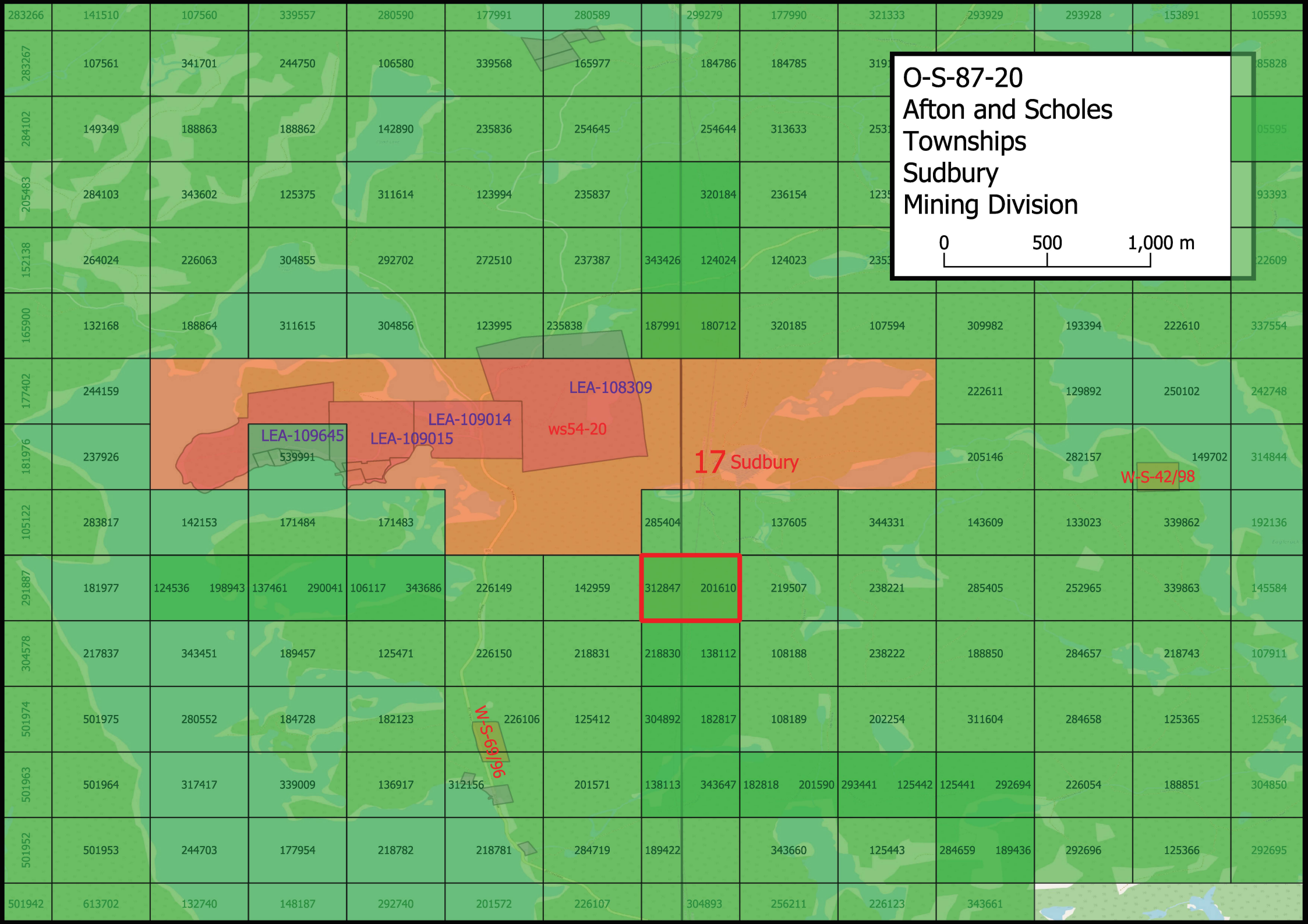
Time: 8:45 am

Copies:

Senior Manager, Mining Lands Section, ENDM, Sudbury

Provincial Mining Recorder, ENDM, Sudbury

Provincial Lands Specialist – CLR



O-S-87-20
Afton and Scholes
Townships
Sudbury
Mining Division

0 500 1,000 m

LEA-109645
LEA-109014
LEA-109015
LEA-108309
ws54-20
17 Sudbury

W-S-42/98

W-S-66/98