

ORDER**SECTION 35, THE MINING ACT, R.S.O. 1990****ORDER NO. O-TB-02/17**

The MINING RIGHTS of the areas outlined in red on the attached sketch, in multiple townships, in the Thunder Bay Mining Division, containing 145.1 hectares, more or less, are hereby REOPENED to prospecting, staking out, sale or lease.

These areas were originally withdrawn by Orders W-TB 21/11, W-TB 30/12, W-TB 31/12 and W-TB 32/12, to allow the Ministry of Transportation to secure aggregate resources for future road construction.

This order comes into effect upon signing.

Date: JAN 12 2017

Time: 10:45 a.m.

ORIGINAL SIGNED BY TONY SCARR

Tony Scarr, Provincial Mining Recorder
Mining Lands Section
Mines and Minerals Division

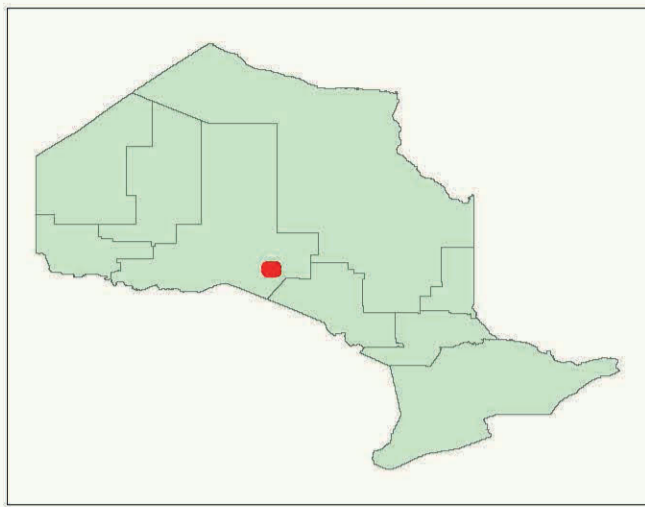
Copies:

Senior Manager, Mining Lands Section, MNDM, Sudbury

Provincial Mining Recorder, MNDM, Sudbury

Provincial Lands Specialist - CLR

O-TB-02/17
Walsh Township (G-0636)
Thunder Bay Mining District

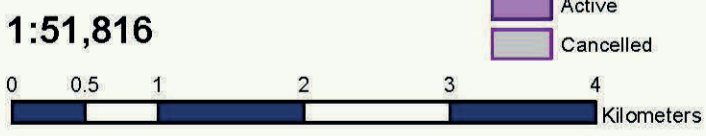
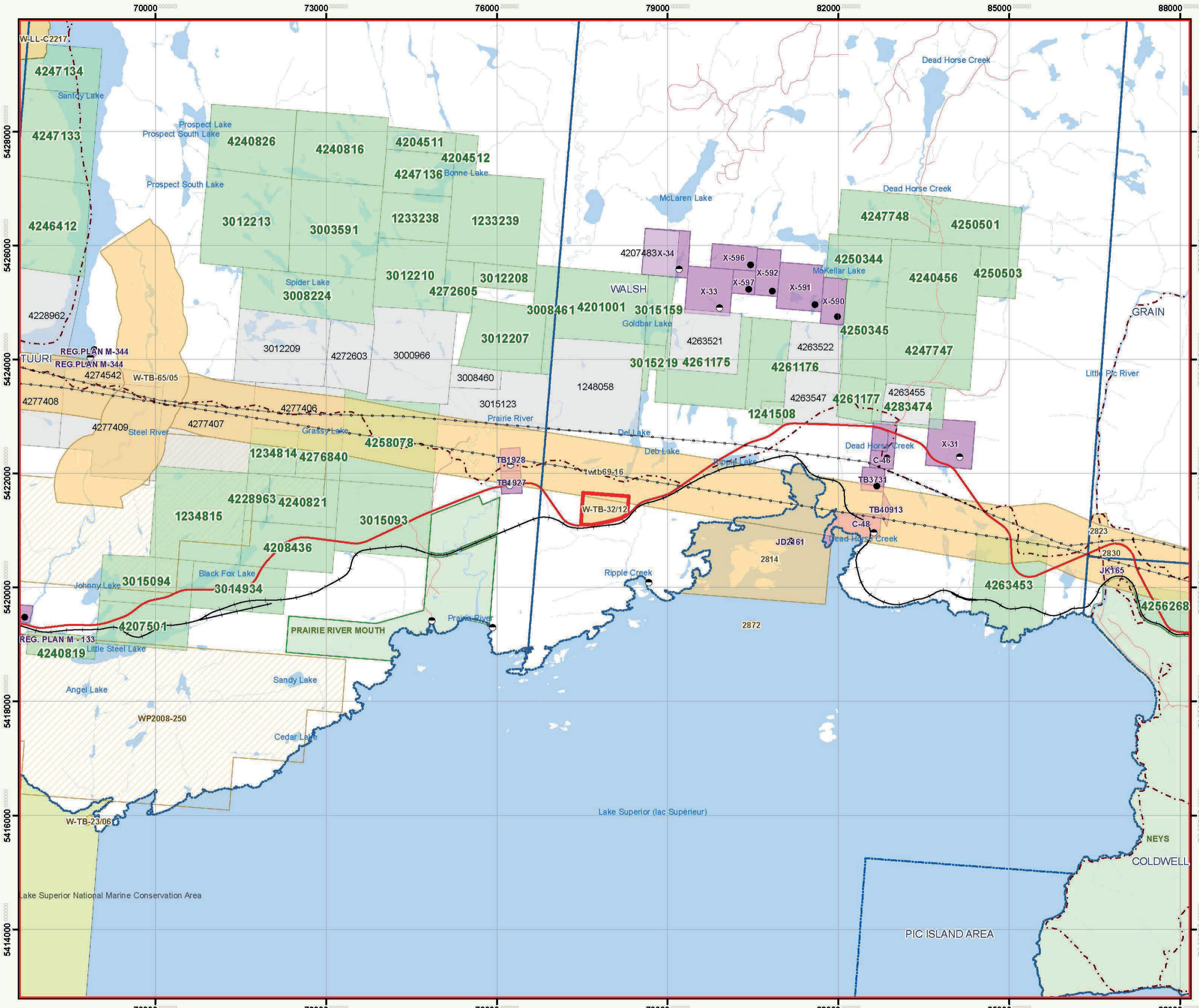


Base Features

- W-TB-32/12
- Tower
- Work Camp
- Utility Site
- MNDM Administrative Boundaries
- Lot Fabric Improved
- Utility Line - Hydro Line**
 - Transmission Line
 - Pipeline
- Road Segment**
 - Other Existing Roads
 - Primary
 - Highway
 - Trail Segment
 - Railway Segment
- Airports**
 - Airports
 - Airport Airstrip
 - Airport Official
- Federal Protected Area**
 - Federal Protected Area
 - Federal Land Other
 - Indian Reserve
- Waterbodies**
 - River / Stream
 - Waterbody
- Provincial Park Regulated**
 - Provincial Park Regulated
 - Conservation Reserve Regulated

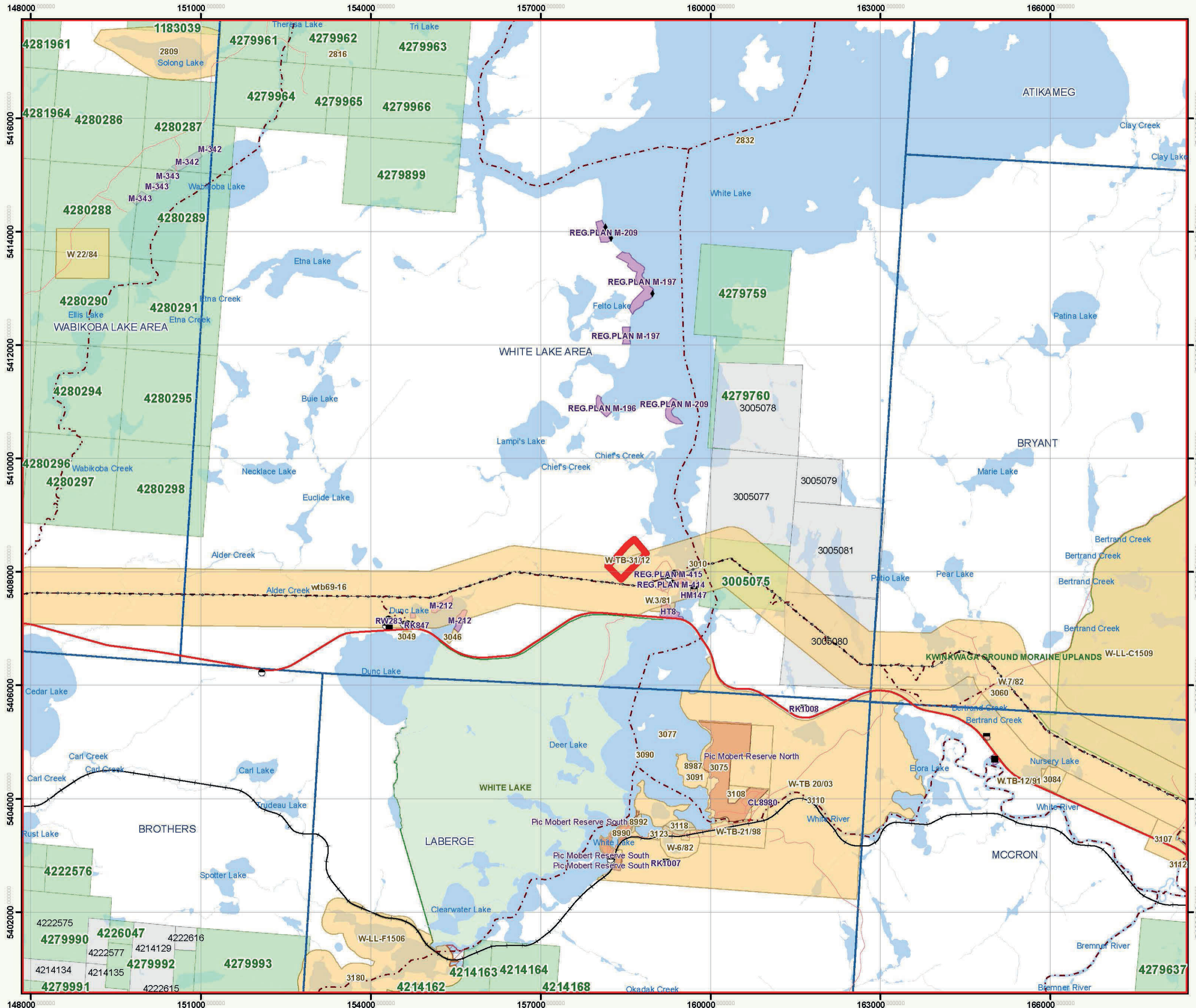
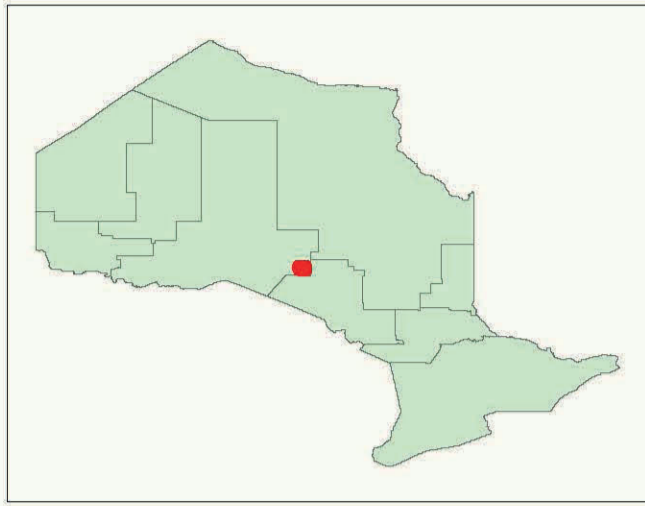
Mining Lands Features

- Dispositions Symbols**
- Freehold Patent, S+M
 - Freehold Patent, SRO
 - Freehold Patent, MRO
 - Leasehold Patent, S+M
 - Leasehold Patent, SRO
 - Leasehold Patent, MRO
 - Licence of Occupation, S+M
 - Licence of Occupation, SRO
 - Licence of Occupation, MRO
 - Licence of Occupation, not specified
 - Tower
 - Camp
 - Unknown
 - OIC Order in Council
 - LUP Land Use Permit
 - WPLA WPLA
- MNDM Alienations**
- Active, Withdrawal
 - Active, Notice
 - Cancelled, Withdrawal
 - Cancelled, Notice
- MNDM Mining Claims**
- Active
 - Cancelled
 - Pending
- MNDM Dispositions**
- Active
 - Cancelled



This map should not be relied on as a precise indicator of routes or locations, nor as a guide to navigation. The Ontario Ministry of Natural Resources (OMNR) shall not be liable in any way for the use of, or reliance upon, this map or any information on this map.

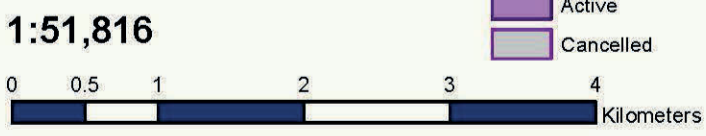
Il ne faut pas présumer que cette carte indique précisément les voies et les lieux, ni s'en servir comme guide à la navigation. Le ministère des Richesses naturelles de l'Ontario (MRN) n'assume aucune responsabilité quelle qu'elle soit relativement à l'utilisation de cette carte ou de la confiance qui serait mise en celle-ci.



- W-TB 31/12
- Tower
- Work Camp
- Utility Site
- MNDM Administrative Boundaries
- Lot Fabric Improved
- Utility Line - Hydro Line**
- Transmission Line
- Pipeline
- Road Segment**
- Other Existing Roads
- Primary
- Highway
- Trail Segment
- Railway Segment
- Airports**
- Airports
- Airport Airstrip
- Airport Official

Mining Lands Features

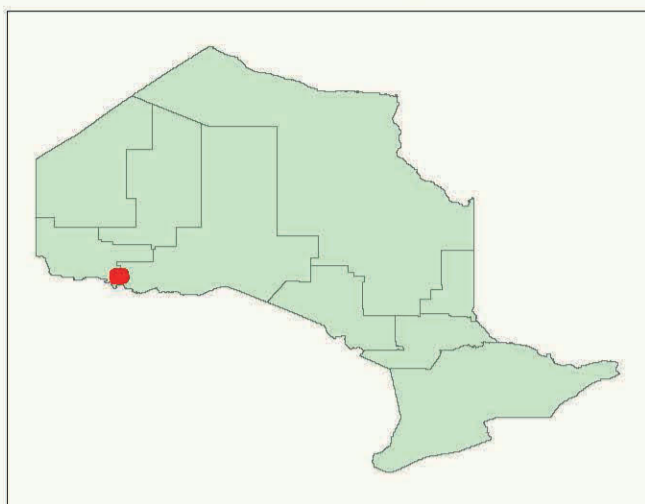
- Dispositions Symbols**
- Freehold Patent, S+M
- Freehold Patent, SRO
- Freehold Patent, MRO
- Leasehold Patent, S+M
- Leasehold Patent, SRO
- Leasehold Patent, MRO
- Licence of Occupation, S+M
- Licence of Occupation, SRO
- Licence of Occupation, MRO
- Licence of Occupation, not specified
- Tower
- Camp
- Unknown
- OIC Order in Council
- LUP Land Use Permit
- WPLA WPLA
- MNDM Alienations**
- Active, Withdrawal
- Active, Notice
- Cancelled, Withdrawal
- Cancelled, Notice
- MNDM Mining Claims**
- Active
- Cancelled
- Pending
- MNDM Dispositions**
- Active
- Cancelled



This map should not be relied on as a precise indicator of routes or locations, nor as a guide to navigation. The Ontario Ministry of Natural Resources (OMNR) shall not be liable in any way for the use of, or reliance upon, this map or any information on this map.

Il ne faut pas présumer que cette carte indique précisément les voies et les lieux, ni s'en servir comme guide à la navigation. Le ministère des Richesses naturelles de l'Ontario (MRN) n'assume aucune responsabilité quelle qu'elle soit relativement à l'utilisation de cette carte ou de la confiance qui serait mise en celle-ci.

O-TB-02/17
Factor Lake Area (G-0527)
Thunder Bay Mining District



Base Features

- W-TB-20/11
- Tower
- Work Camp
- Utility Site
- MNM Administrative Boundaries
- Lot Fabric Improved

Utility Line - Hydro Line

- Transmission Line
- Pipeline

Road Segment

- Other Existing Roads
- Primary
- Highway
- Trail Segment
- Railway Segment

Airports

- Airports
- Airport Airstrip
- Airport Official

Federal Protected Area

- Federal Protected Area
- Federal Land Other
- Indian Reserve

Waterbodies

- River / Stream
- Waterbody

Provincial Park Regulated

- Provincial Park Regulated
- Conservation Reserve Regulated

Mining Lands Features

Dispositions Symbols

- Freehold Patent, S+M
- Freehold Patent, SRO
- Freehold Patent, MRO
- Leasehold Patent, S+M
- Leasehold Patent, SRO
- Leasehold Patent, MRO
- Licence of Occupation, S+M
- Licence of Occupation, SRO
- Licence of Occupation, MRO
- Licence of Occupation, not specified
- Tower
- Camp
- Unknown

OIC

- Order in Council
- Land Use Permit
- WPLA

MNDM Alienations

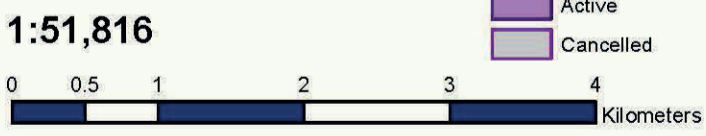
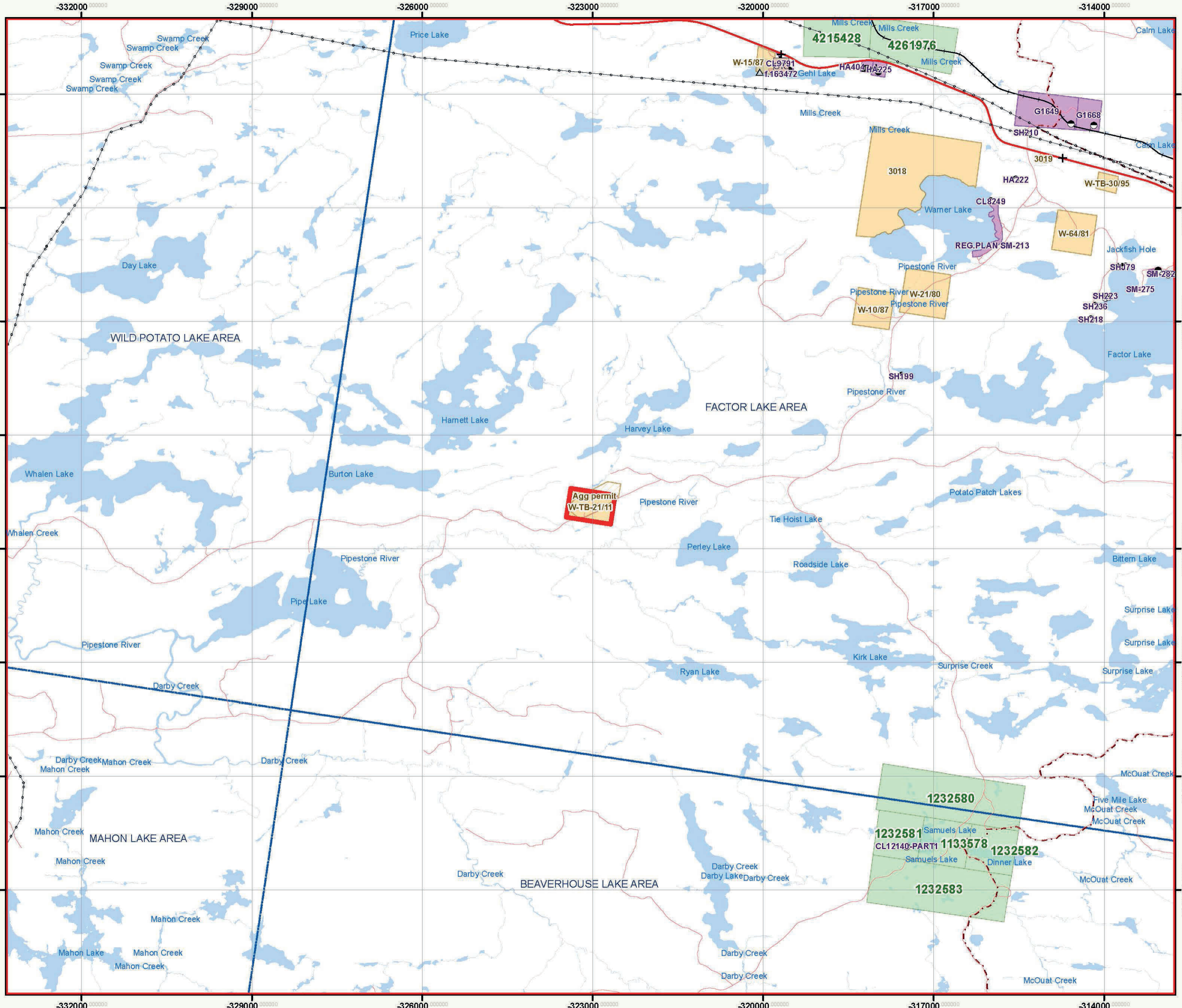
- Active, Withdrawal
- Active, Notice
- Cancelled, Withdrawal
- Cancelled, Notice

MNDM Mining Claims

- Active
- Cancelled
- Pending

MNDM Dispositions

- Active
- Cancelled



This map should not be relied on as a precise indicator of routes or locations, nor as a guide to navigation. The Ontario Ministry of Natural Resources (OMNR) shall not be liable in any way for the use of, or reliance upon, this map or any information on this map.

Il ne faut pas présumer que cette carte indique précisément les voies et les lieux, ni s'en servir comme guide à la navigation. Le ministère des Richesses naturelles de l'Ontario (MRN) n'assume aucune responsabilité quelle qu'elle soit relativement à l'utilisation de cette carte ou de la confiance qui serait mise en celle-ci.