

**ORDER**

**SECTION 35, THE MINING ACT, R.S.O. 1990**

**ORDER NO. W-L-95-07**

The SURFACE AND MINING RIGHTS of the area in red hatching on the attached sketch, situated in Purvis and Steele Townships, Larder Lake Mining Division, containing 2,250 hectares, more or less, are hereby WITHDRAWN from prospecting, staking out, sale or lease in accordance with the terms of this Order.

This area is WITHDRAWN while the Ministry considers a request to protect culturally significant sites.

Saving, excepting and reserving hereto and herefrom, all other lands patented, sold, leased or otherwise alienated by the Crown at the date of this Order.

Any alienated lands lying within the limits of this withdrawn area that revert to the Crown subsequent to the date of this Order will automatically be considered to be withdrawn as part of this Order.

This order comes into effect upon signing.

Date: Nov. 15, 2007

ORIGINAL SIGNED BY "CHRISTINE KASZYCKI"

Christine Kaszycki, Assistant Deputy Minister  
Mining Lands Section  
Mines and Minerals Division

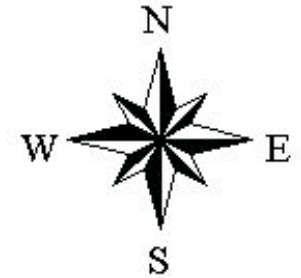
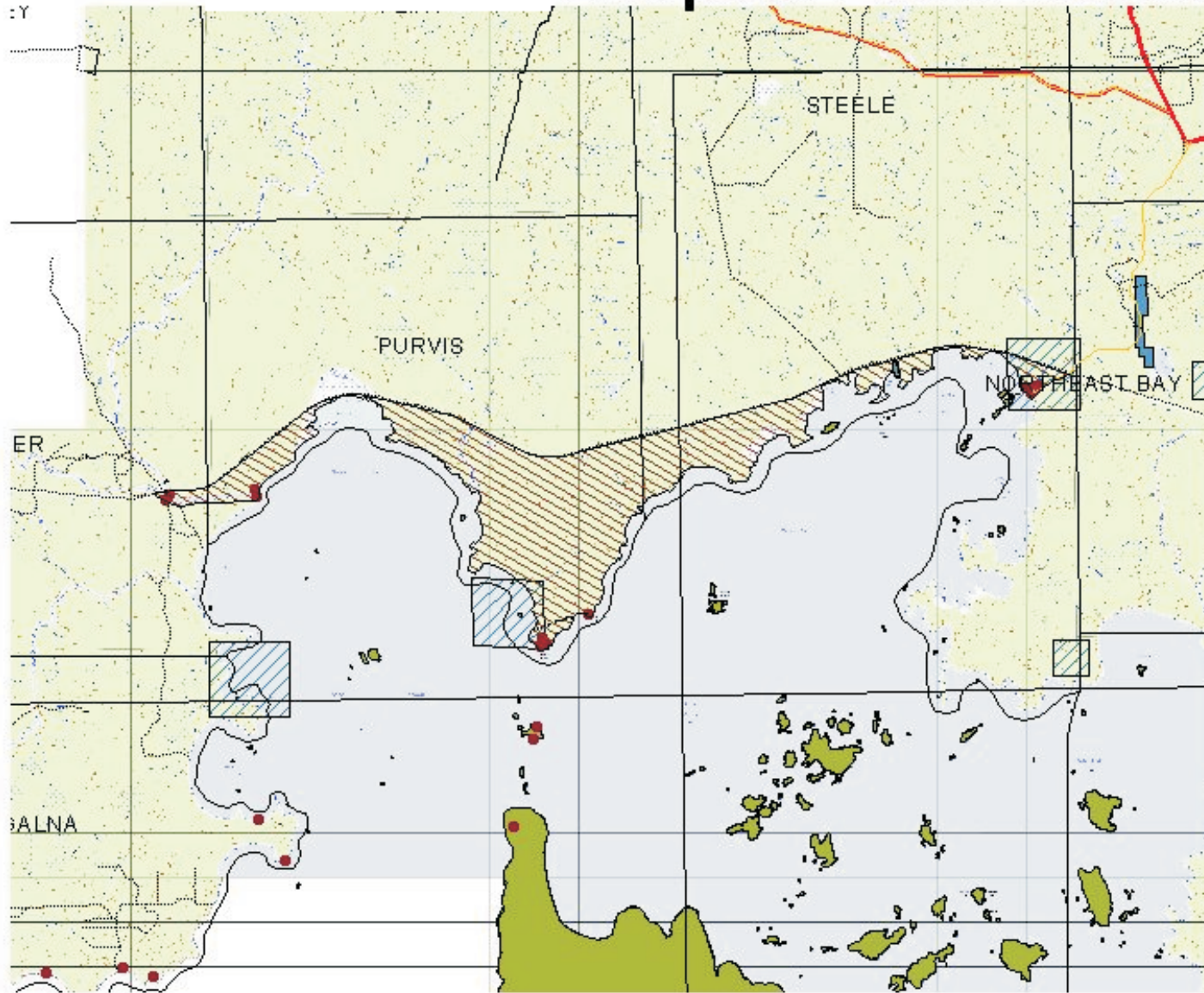
Time: 6:15 p.m.

Copies:

Senior Manager, Mining Lands Section, MNDM, Sudbury  
Provincial Mining Recorder, MNDM, Sudbury  
MNR File (Peterborough): 195150  
MLC - Larder Lake/Kirkland Lake

# Northwestern Lake Abitibi Area

## W-L-95-07 Hospital Point Withdrawal



- Withdrawal point
- Withdrawal point
- Withdrawal point
- Withdrawal point
- Withdrawal point
- Withdrawal point
- Withdrawal point
- Withdrawal point
- Withdrawal point
- Withdrawal point
- Withdrawal point
- Withdrawal point
- Withdrawal point
- Withdrawal point
- Withdrawal point
- Withdrawal point
- Withdrawal point
- Withdrawal point
- Withdrawal point
- Withdrawal point
- Withdrawal point
- Withdrawal point
- Withdrawal point
- Withdrawal point
- Withdrawal point
- Withdrawal point
- Withdrawal point
- Withdrawal point
- Withdrawal point
- Withdrawal point
- Withdrawal point
- Withdrawal point
- Withdrawal point
- Withdrawal point
- Withdrawal point

3 0 3 6 Kilometers