

ORDER

SECTION 35, THE MINING ACT, S.O. 2009 C.21

ORDER NO. W-P-65/15

The SURFACE RIGHTS and MINING RIGHTS of the area of Sites 1-6 outlined in red on the four attached sketches, situated in Jaab Lake Area, BMA 521813, BMA 515 823 and BMA 515 814, in the Porcupine Mining Division, containing 96 hectares more or less, are hereby WITHDRAWN from prospecting, staking out, sale or lease.

This area is WITHDRAWN for reasons of its cultural, ecological or other sensitive nature.

Saving, excepting and reserving hereto and herefrom, all other lands patented, sold, leased or otherwise alienated by the Crown at the date of this Order.

Any alienated lands lying within the limits of this withdrawn area that revert to the Crown subsequent to the date of this Order will automatically be considered to be withdrawn as part of this Order.

This order comes into effect upon signing.

Date: October 16, 2015

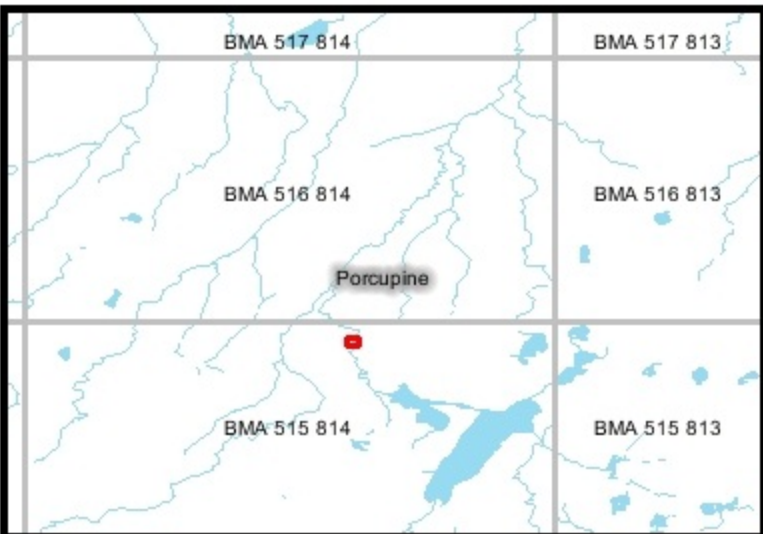
ORIGINAL SIGNED BY CINDY BLANCHER-SMITH

Time: 4:13 p.m.

Cindy Blancher-Smith, Assistant Deputy Minister
Mines and Minerals Division

Copies:

Senior Manager, Mining Lands Section, MNDM, Sudbury
Provincial Mining Recorder, MNDM, Sudbury
Provincial Lands Specialist - CLR
Director, Aboriginal Relations Branch, MNDM, Sudbury



BMA 516 814
G-5276

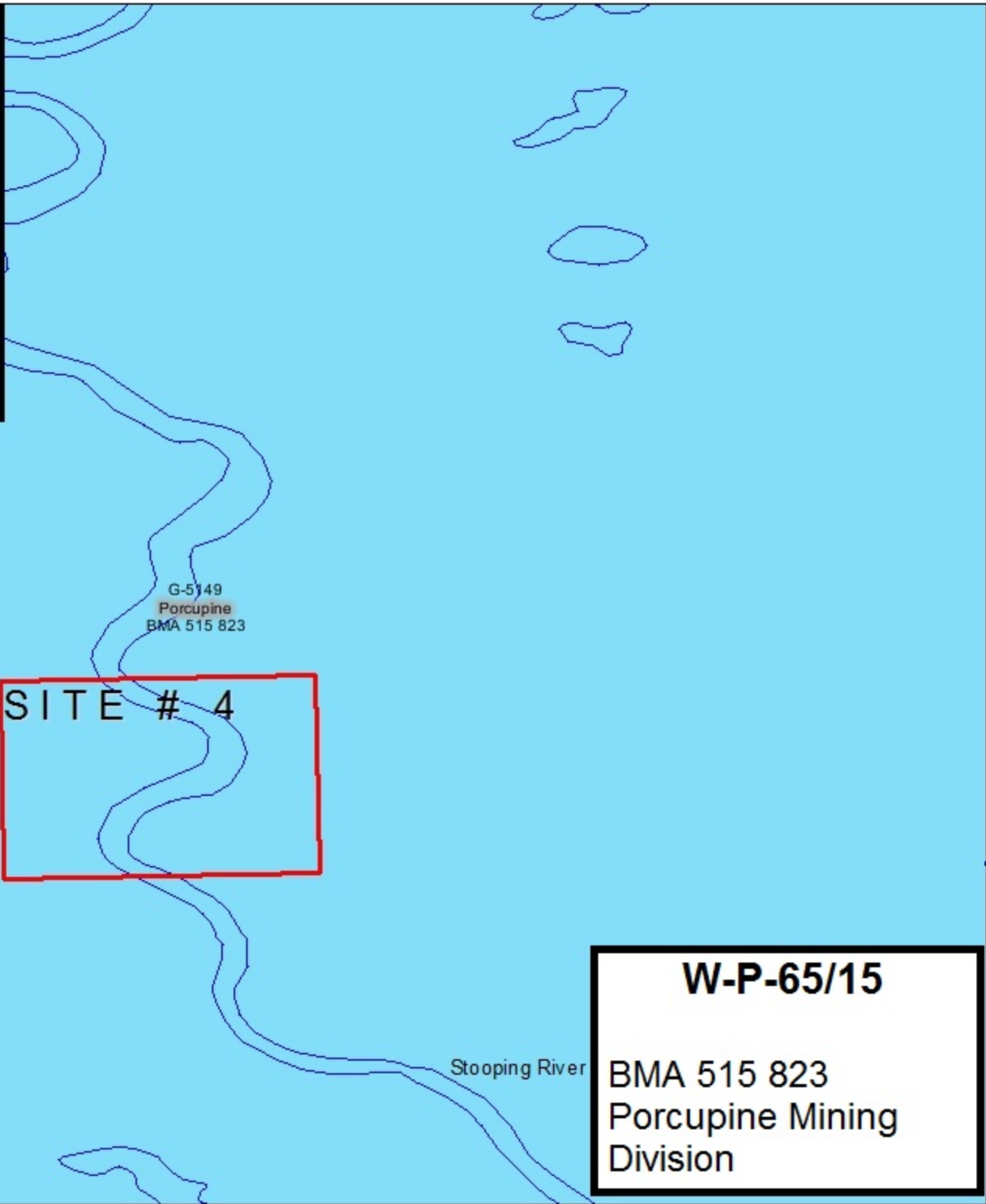
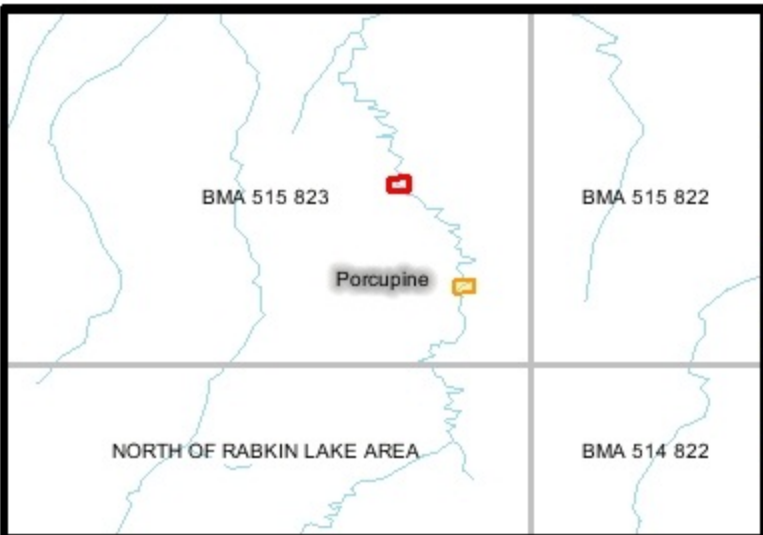
Knosheo River

Porcupine
BMA 515 814
G-5277

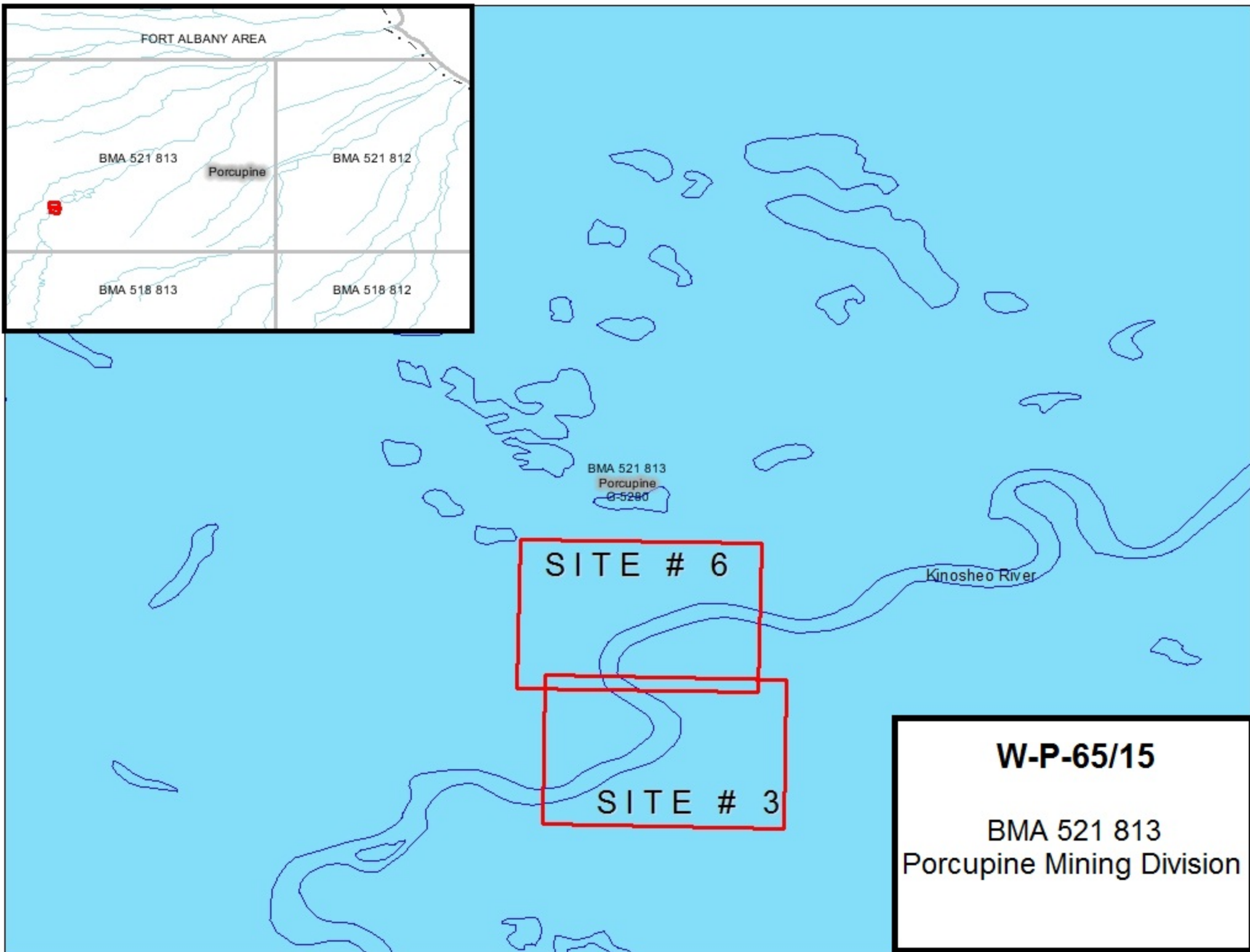
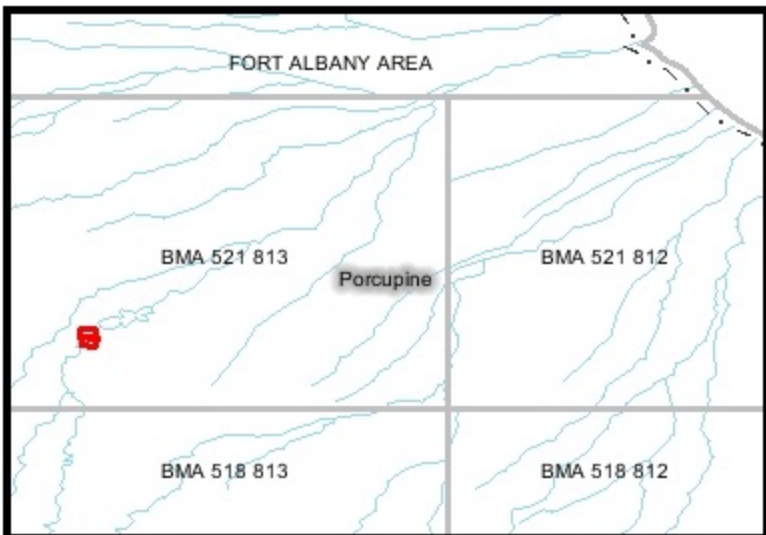
SITE # 5

W-P-65/15

BMA 515 814
Porcupine Mining Division

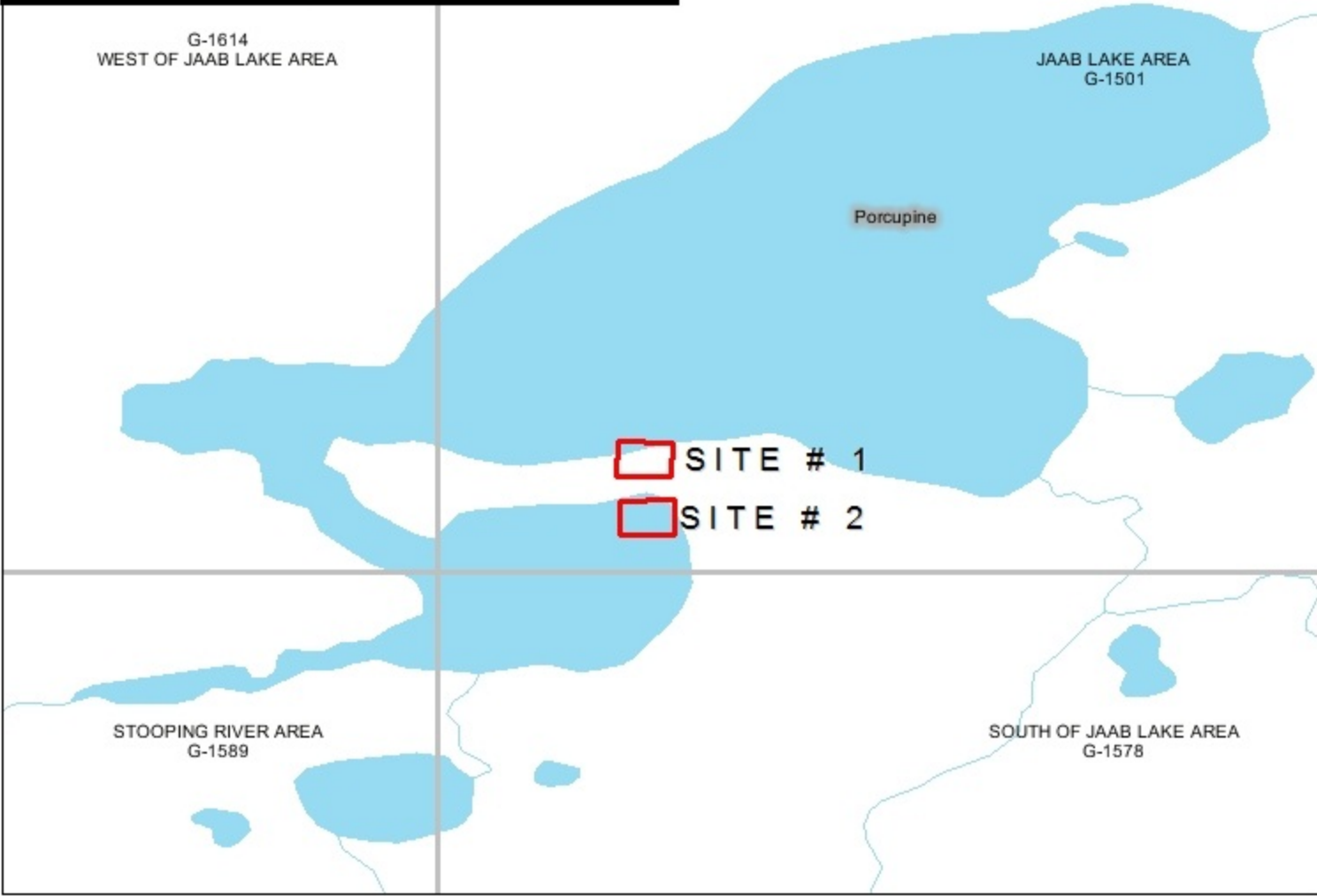
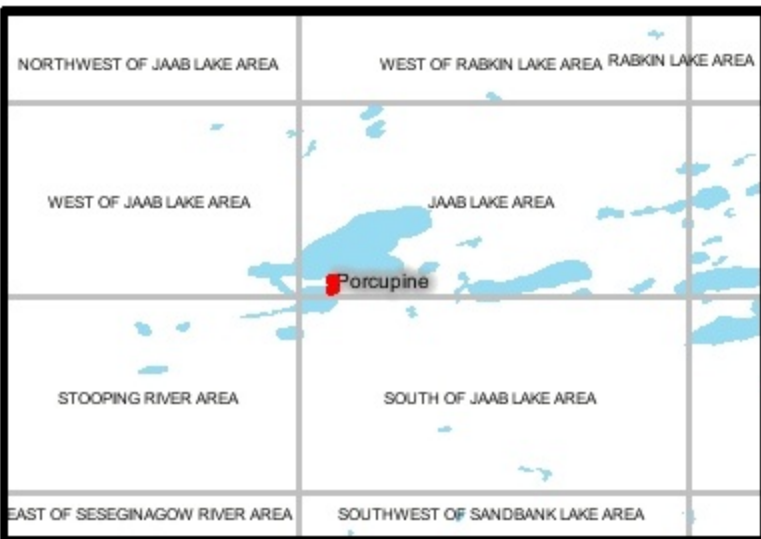


W-P-65/15
BMA 515 823
Porcupine Mining
Division



W-P-65/15

BMA 521 813
Porcupine Mining Division



W-P-65/15

Jaab Lake Area
Porcupine Mining Division