

## ORDER

### SECTION 35, THE MINING ACT, R.S.O. 1990

#### ORDER NO. W-P-76/14

The SURFACE RIGHTS and MINING RIGHTS of the area outlined in red on the attached sketch, adding to original withdrawal orders for Missinaibi Provincial Park situated in the Township of Puskuta, Byng, Cromlech et al, in the Porcupine Mining Division, containing 2154 hectares more or less, are hereby WITHDRAWN from prospecting, staking out, sale or lease.

This area is WITHDRAWN as proposed additions to Missinaibi Provincial Park.

Saving, excepting and reserving hereto and herefrom, all other lands patented, sold, leased or otherwise alienated by the Crown at the date of this Order.

Any alienated lands lying within the limits of this withdrawn area that revert to the Crown subsequent to the date of this Order will automatically be considered to be withdrawn as part of this Order.

This order comes into effect upon signing.

Date: November 24, 2014

Time: 1:10 p.m.

ORIGINAL SIGNED BY "C. BLANCHER-SMITH"

Cindy Blancher-Smith, Assistant Deputy Minister  
Mines and Minerals Division

Copies:

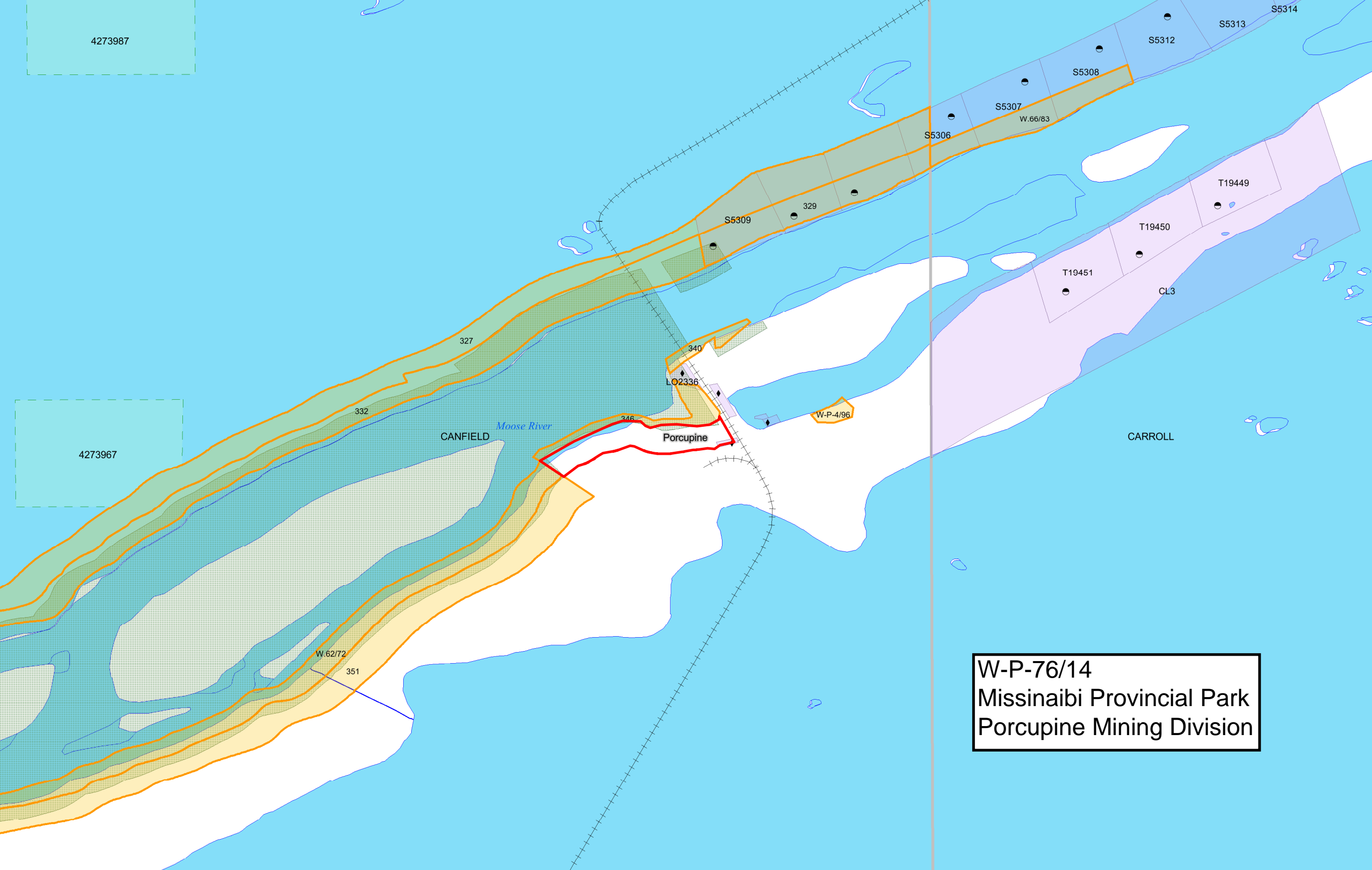
Senior Manager, Mining Lands Section, MNDM, Sudbury

Provincial Mining Recorder, MNDM, Sudbury

Provincial Lands Specialist – CLR

4273987

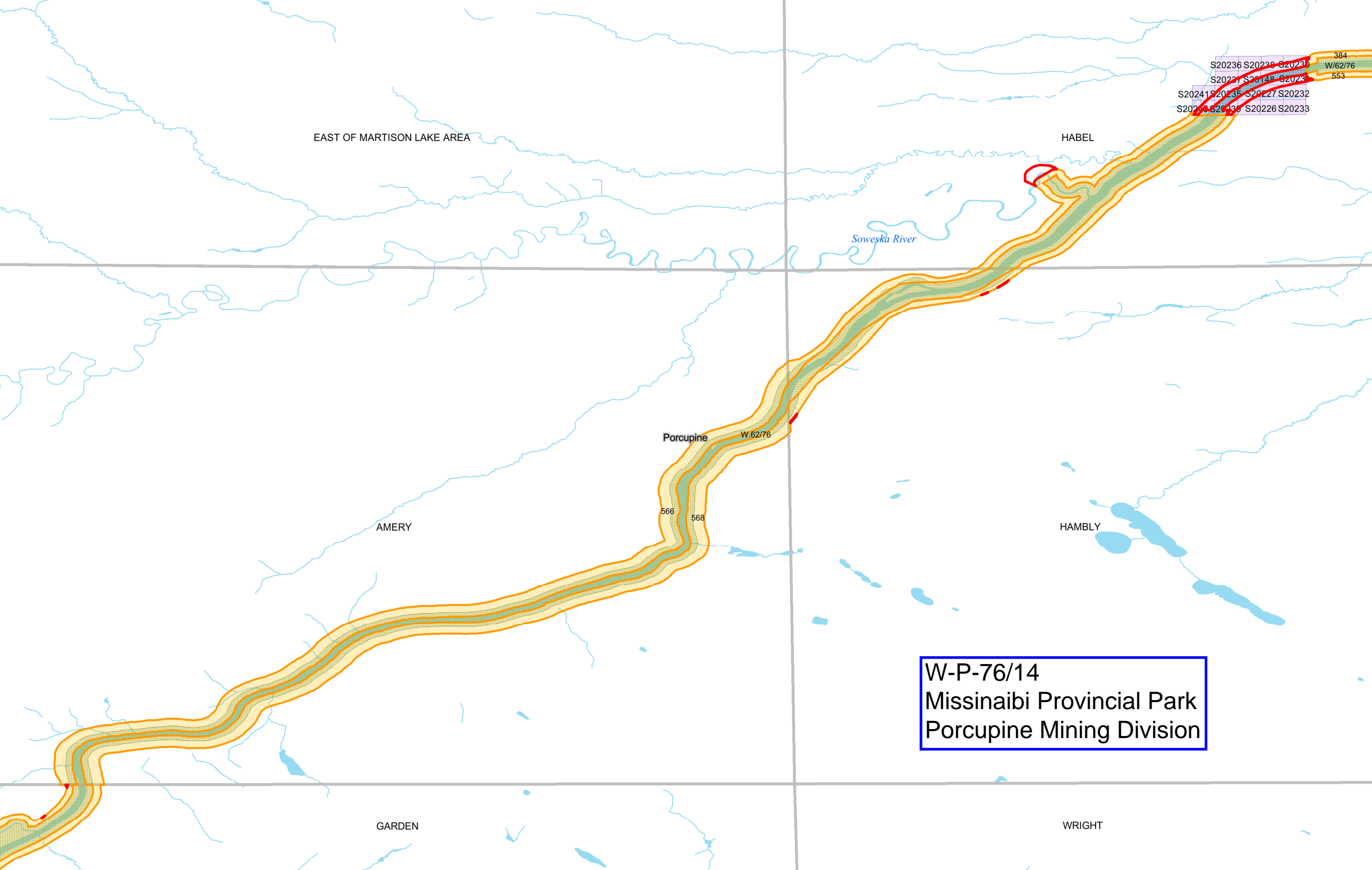
4273967



LO2336

Porcupine

W-P-76/14  
Missinaibi Provincial Park  
Porcupine Mining Division



EAST OF MARTISON LAKE AREA

HABEL

*Sowska River*

Porcupine

W.62/76

566

568

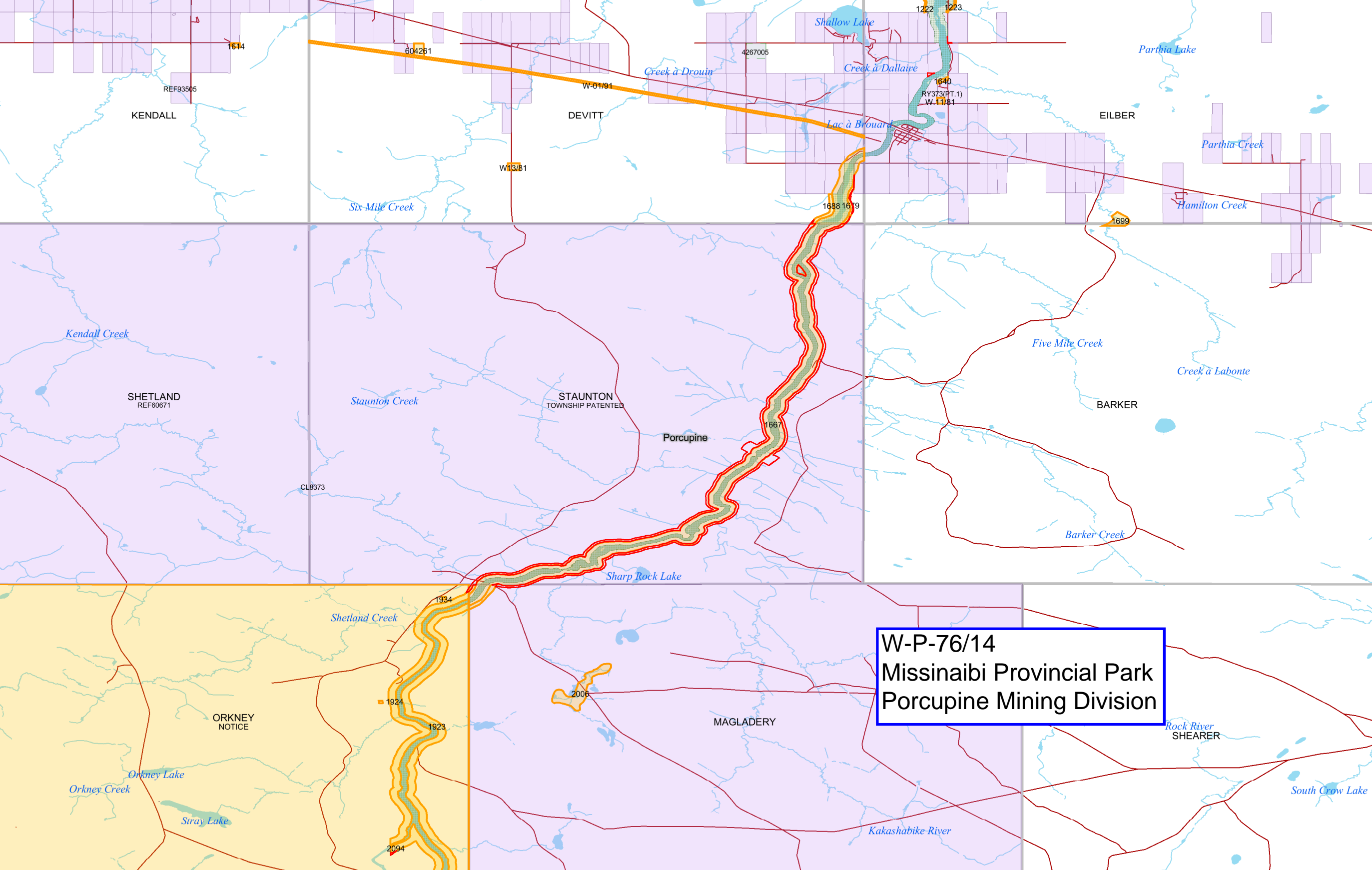
AMERY

HAMBLY

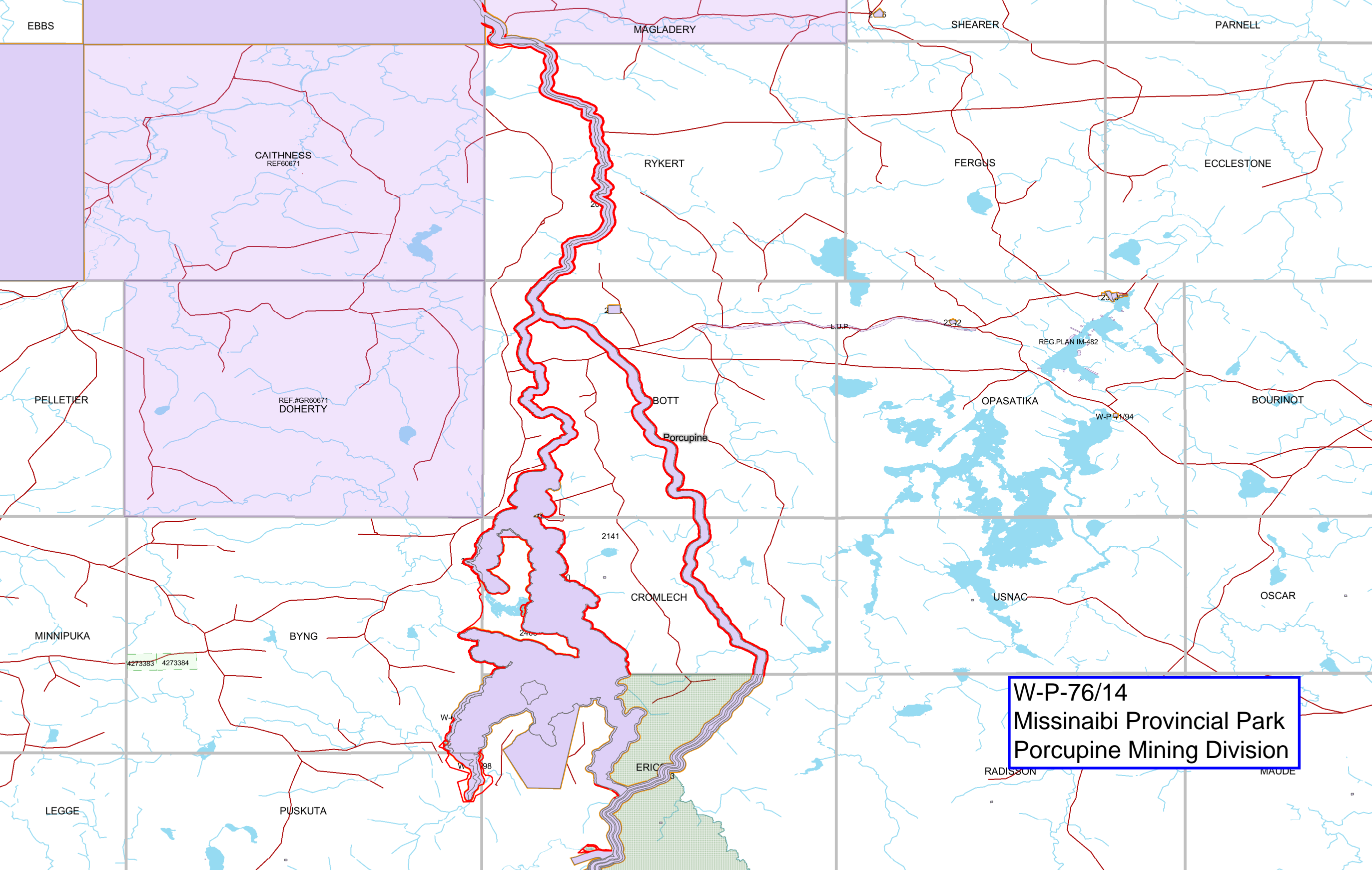
W-P-76/14  
Missinaibi Provincial Park  
Porcupine Mining Division

GARDEN

WRIGHT



**W-P-76/14**  
**Missinaibi Provincial Park**  
**Porcupine Mining Division**



EBBS

MAGLADERY

SHEARER

PARNELL

CAITHNESS  
REF#60671

RYKERT

FERGUS

ECCLESTONE

PELLETIER

REF.#GR60671  
DOHERTY

BOTT

Porcupine

OPASATIKA

REG.PLAN IM.482

W-P-1194

BOURINOT

2141

CROMLECH

USNAC

OSCAR

MINNIPIKA

BYNG

4273383 4273384

W-P-1198

ERIC

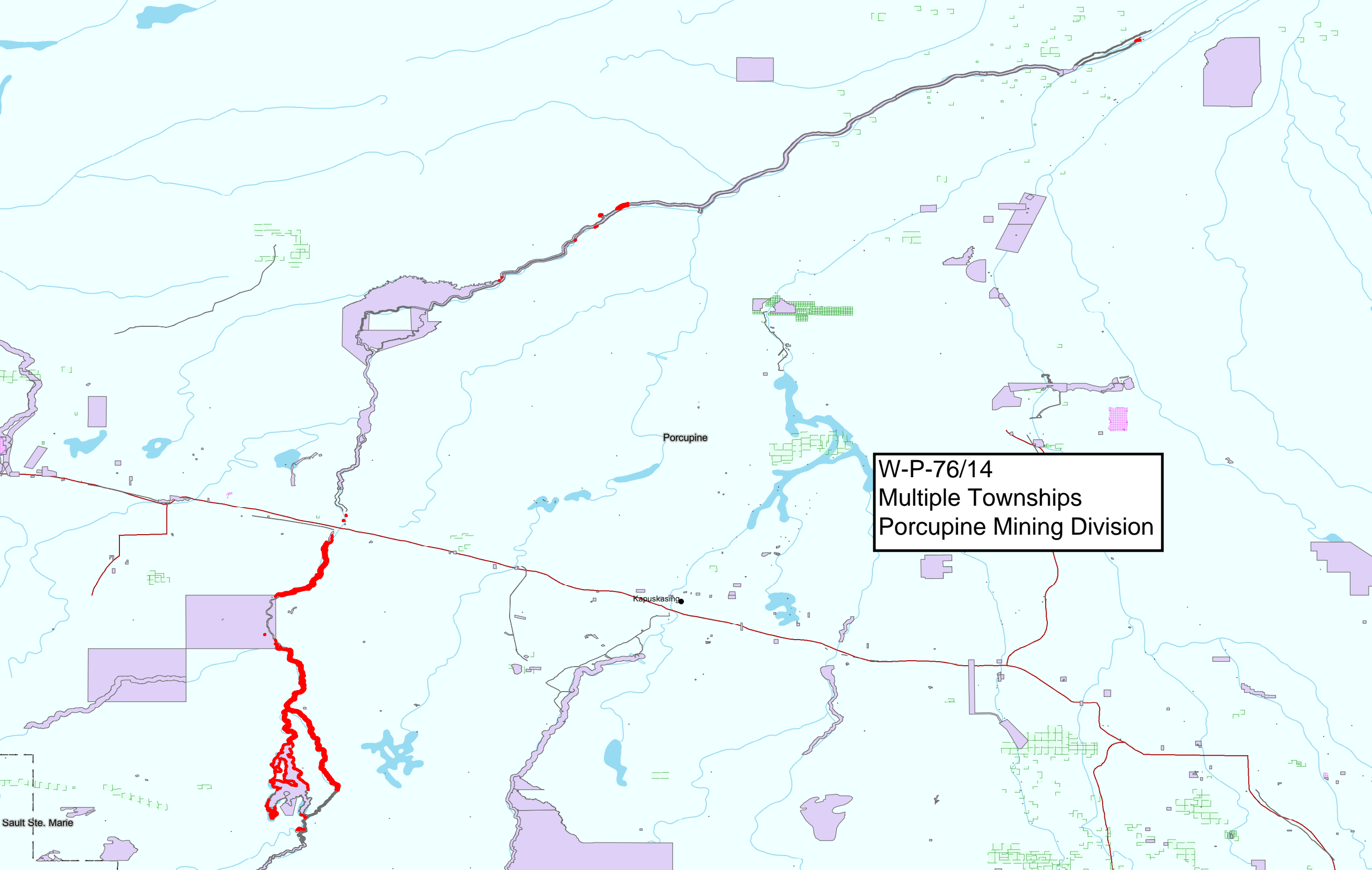
RADISSON

MAUDE

LEGGE

PUSKUTA

W-P-76/14  
Missinaibi Provincial Park  
Porcupine Mining Division



Porcupine

Kapuskasing

W-P-76/14  
Multiple Townships  
Porcupine Mining Division

Sault Ste. Marie