

**ORDER**

**SECTION 35, THE MINING ACT, R.S.O. 1990**

**ORDER NO. W-PA-21/12**

The SURFACE RIGHTS and MINING RIGHTS of the area outlined in red on the attached sketch, situated in the Townships and Areas listed in Schedule A, in the Patricia, Porcupine and Red Lake Mining Divisions, containing 2,318,061 hectares more or less, are hereby WITHDRAWN from prospecting, staking out, sale or lease pursuant to Section 35 of the Mining Act R.S.O. 1990.

Saving, excepting and reserving hereto and herefrom, all other lands patented, sold, leased or otherwise alienated by the Crown at the date of this Order.

Any alienated lands lying within the limits of this withdrawn area that revert to the Crown subsequent to the date of this Order will automatically be considered to be withdrawn as part of this Order.

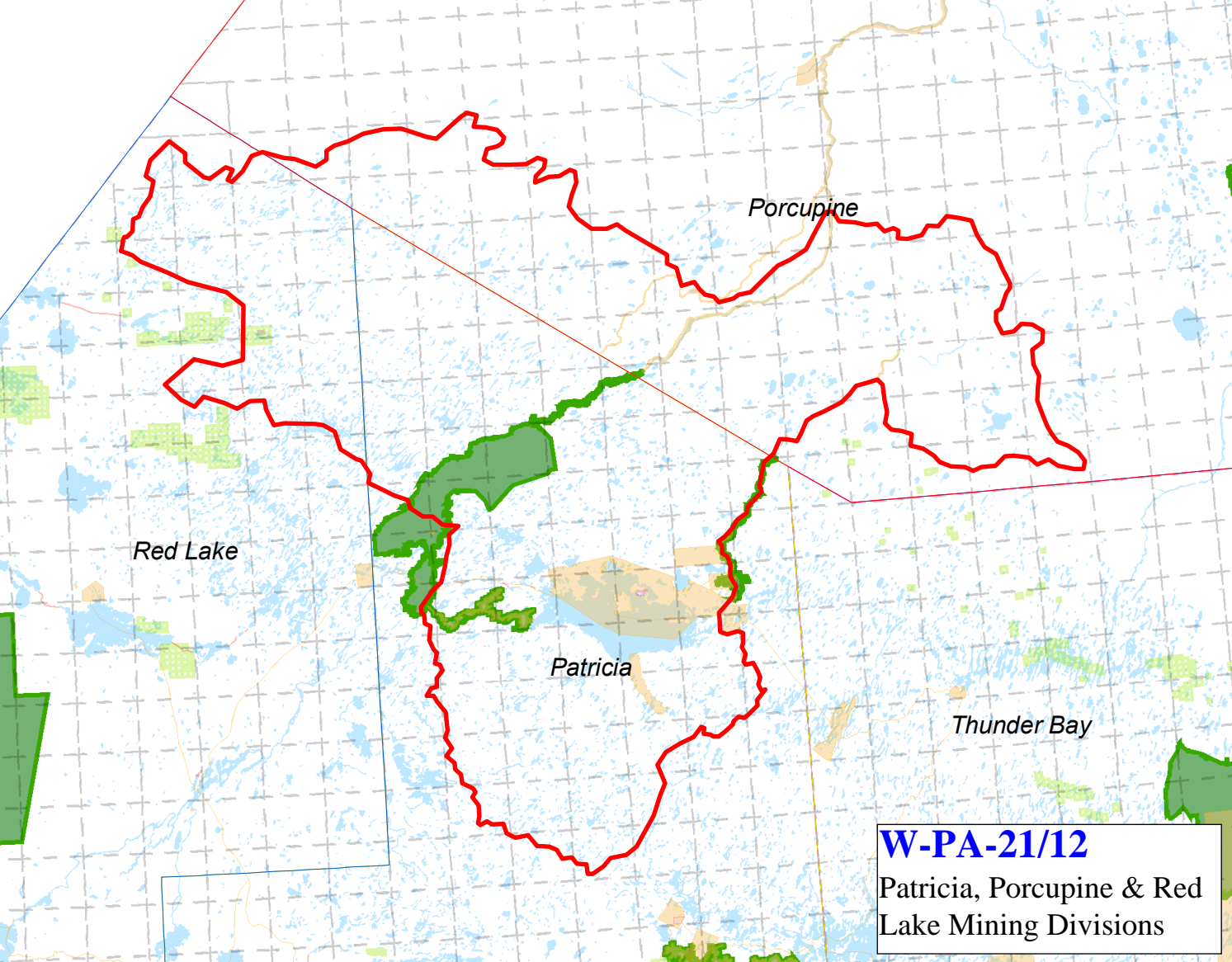
This order comes into effect upon signing.

Date: March 2, 2012

Time: 8:00 p.m

ORIGINAL SIGNED BY "ROBERT MERWIN"  
*for* Ray Mantha, Assistant Deputy Minister Mines  
and Minerals Division

Copies:  
Senior Manager, Mining Lands Section, MNDMF, Sudbury  
Provincial Mining Recorder, MNDMF, Sudbury  
Provincial Lands Specialist - CLR  
RLUG – NW Region



Porcupine

Red Lake

Patricia

Thunder Bay

**W-PA-21/12**  
Patricia, Porcupine & Red  
Lake Mining Divisions

**Schedule A**

AKEM FALLS AREA  
ALJO LAKE AREA  
ASHEWEIG RIVER AREA  
BEARDY CREEK AREA  
BIRCH POINT AREA  
BMA 532 894  
BMA 532 901  
BMA 532 902  
BMA 533 894  
BMA 533 901  
BMA 533 902  
BMA 533 903  
BMA 534 892  
BMA 534 893  
BMA 534 901  
BMA 534 902  
BMA 534 903  
BMA 535 892  
BMA 535 901  
BMA 535 902  
BMA 535 903  
BMA 536 892  
BMA 536 902  
BMA 536 903  
BMA 536 904  
BMA 538 892  
BMA 541 883  
BMA 541 892  
BMA 541 893  
BMA 541 894  
BMA 541 903  
BMA 542 883  
BMA 542 884  
BMA 542 891  
BMA 542 892  
BMA 542 893  
BMA 542 894  
BMA 542 903  
BMA 543 881  
BMA 543 882  
BMA 543 883  
BMA 543 892  
BMA 543 893  
BMA 543 894  
BMA 543 901  
BMA 543 902  
BMA 543 903  
BMA 544 881

BMA 544 882  
BMA 544 883  
BMA 544 884  
BMA 544 891  
BMA 544 892  
BMA 544 893  
BMA 544 894  
BMA 544 901  
BMA 544 902  
BMA 544 903  
BMA 545 882  
BMA 545 883  
BMA 545 884  
BMA 545 891  
BMA 545 892  
BMA 545 893  
BMA 545 894  
BMA 545 901  
BMA 545 902  
BMA 545 903  
BMA 546 882  
BMA 546 883  
BMA 546 884  
BMA 546 891  
BMA 546 893  
BMA 546 894  
BMA 546 901  
BMA 546 902  
BMA 546 903  
BMA 546 904  
BMA 546 912  
BMA 547 901  
BMA 547 902  
BMA 547 903  
BMA 547 904  
BMA 547 911  
BMA 547 912  
BMA 547 913  
BMA 548 901  
BMA 548 902  
BMA 548 903  
BMA 548 904  
BMA 548 911  
BMA 548 912  
BMA 548 913  
BMA 548 914  
BMA 551 903  
BUG RIVER AREA  
DADSON LAKE AREA  
DERNIERE LAKE AREA

EAST OF BEARDY CREEK AREA  
EAST OF DERNIERE LAKE AREA  
EAST OF GHOST LAKE AREA  
EAST OF HENDREN LAKE AREA  
EAST OF SHERMAN RIVER AREA  
ELLARD RIVER AREA  
FAWN RIVER AREA  
FROG RIVER AREA  
GHOST LAKE AREA  
GUMMER LAKE AREA  
HANSON RIVER AREA  
HENDREN LAKE AREA  
KINO LAKE AREA  
LACEY CREEK AREA  
LEVITT LAKE AREA  
MAKOOP RIVER AREA  
MASIKESK LAKE AREA  
MATTHEWS LAKE AREA  
MIKWAWUKAW LAKE AREA  
MISIKEYASK LAKE AREA  
NEMEIGUSABINS LAKE AREA  
NORTH OF HENDREN LAKE AREA  
NORTH OF MASIKESK LAKE AREA  
NORTH OF POST ISLAND AREA  
NORTH OF SANDYBANK LAKE AREA  
NORTHEAST OF HENDREN LAKE  
AREA  
PORTAGE LAKE AREA  
POST ISLAND AREA  
ROWLEY LAKE AREA  
SANDYBANK LAKE AREA  
SHERMAN RIVER AREA  
SOUTH OF GHOST LAKE AREA  
SOUTH OF MISIKEYASK LAKE AREA  
SOUTH OF NEMEIGUSABINS LAKE  
AREA  
SOUTH OF SEVERN LAKE AREA  
STABLES LAKE AREA  
THORNE LAKE AREA  
TWEDDLE LAKE AREA  
WEST OF FAWN RIVER AREA  
WHEELER LAKE AREA  
YELLING LAKE AREA