

ORDER**SECTION 35, THE MINING ACT, R.S.O. 1990****ORDER NO. W-SSM-40/16**

The SURFACE RIGHTS and MINING RIGHTS of the areas outlined in red on the attached sketch, being unpatented mining claims SSM 4269947 and SSM 4269948 situated in the Township of Kamichisitit (G-3288), in the Sault Ste. Marie Mining Division, containing 240 hectares more or less, are hereby WITHDRAWN from prospecting, staking out, sale or lease.

These areas are WITHDRAWN while the Ministry determines the status of the lands.

Saving, excepting and reserving hereto and herefrom, all other lands patented, sold, leased or otherwise alienated by the Crown at the date of this Order.

Any alienated lands lying within the limits of this withdrawn area that revert to the Crown subsequent to the date of this Order will automatically be considered to be withdrawn as part of this Order.

This order comes into effect upon signing.

Date: JUN 22 2016

Time: 3:44 p.m.

Original Signed by Tony Scarr

Tony Scarr, Provincial Mining Recorder

Mining Lands Section

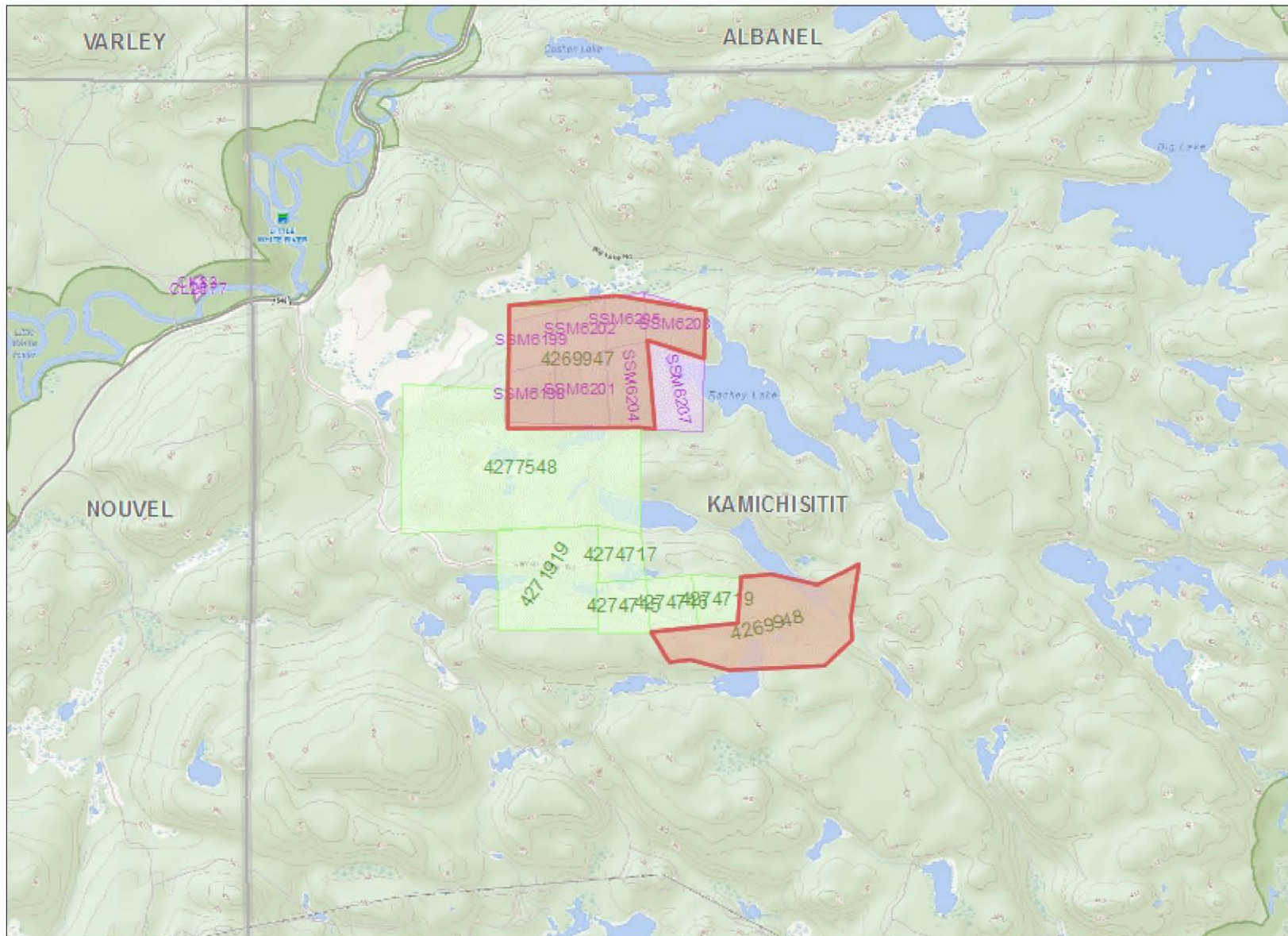
Mines and Minerals Division

Copies:

Senior Manager, Mining Lands Section, MNM, Sudbury

Provincial Mining Recorder, MNM, Sudbury

Provincial Lands Specialist – CLR



Legend

- Administration Boundaries**
- Mining Divisions
 - Resident Geologist District
 - Townships and Areas
- Mineral Tenure Grid**
- OMTG Tenure Grid
- Alienations**
- Withdrawal
 - Notice
- Unpatented Claim**
- Active
 - Pending
- Disposition**
- Disposition
- Disposition Symbols**
- Camp
 - Disposition Unknown/Pending
 - Freehold Patent Mining Rights Only
 - Freehold Patent Surface Rights Only
 - Freehold Patent Surface and Mining Rights
 - Land Use Permit
 - Leasehold Patent Mining Rights Only
 - Leasehold Patent Surface Rights Only
 - Leasehold Patent Surface and Mining Rights
 - License of Occupation Mining Use Only
 - License of Occupation Surface Use Only
 - License of Occupation Surface and Mining Rights
 - License of Occupation Uses Not Specified
 - Order in Council
 - Tower
 - WPLA
- Geology Layers**
- AMIS Sites
 - AMIS Features
 - Drill Holes
 - Mineral Occurrences



Projection: Web Mercator



The Ontario Ministry of Northern Development and Mines shall not be liable in any way for the use of, or reliance upon, this map or any information on this map. This map should not be used for: navigation, a plan of survey, routes, nor locations.

Imagery Copyright Notices: Ontario Ministry of Natural Resources and Forestry; NASA Landsat Program; First Base Solutions Inc.; Aéro-Photo (1961) Inc.; DigitalGlobe Inc.; U.S. Geological Survey.

