

ORDER

SECTION 35, THE MINING ACT, R.S.O. 1990

ORDER NO. W-TB-23/06

THE SURFACE AND MINING RIGHTS of the area outlined in red on the attached sketches, in the Thunder Bay Mining Division, containing 2761.5 hectares, more or less, are hereby withdrawn from prospecting, staking out, sale or lease.

These areas are withdrawn as part of the National Marine Conservation Area (NMCA) Agreement in Principle (AIG).

Saving, excepting and reserving hereto and herefrom, all other lands patented, sold, leased or otherwise alienated by the Crown at the date of this Order.

Any alienated lands lying within the limits of this withdrawn area that revert to the Crown subsequent to the date of this order will automatically be considered to be withdrawn as part of this order.

This order comes into effect upon signing.

This order comes into effect on March 31, 2006 at 12:00:01 a.m. standard time

Date: Mar 30/06

Original signed by "Christine Kaszycki"

Time: 2:22 p.m.

Christine Kaszycki, Assistant Deputy Minister
Mines and Minerals Division

Copies:

Senior Manager, Mining Lands Section, 6th Floor, Sudbury, MNDM

Provincial Mining Recorder, Sudbury, MNDM

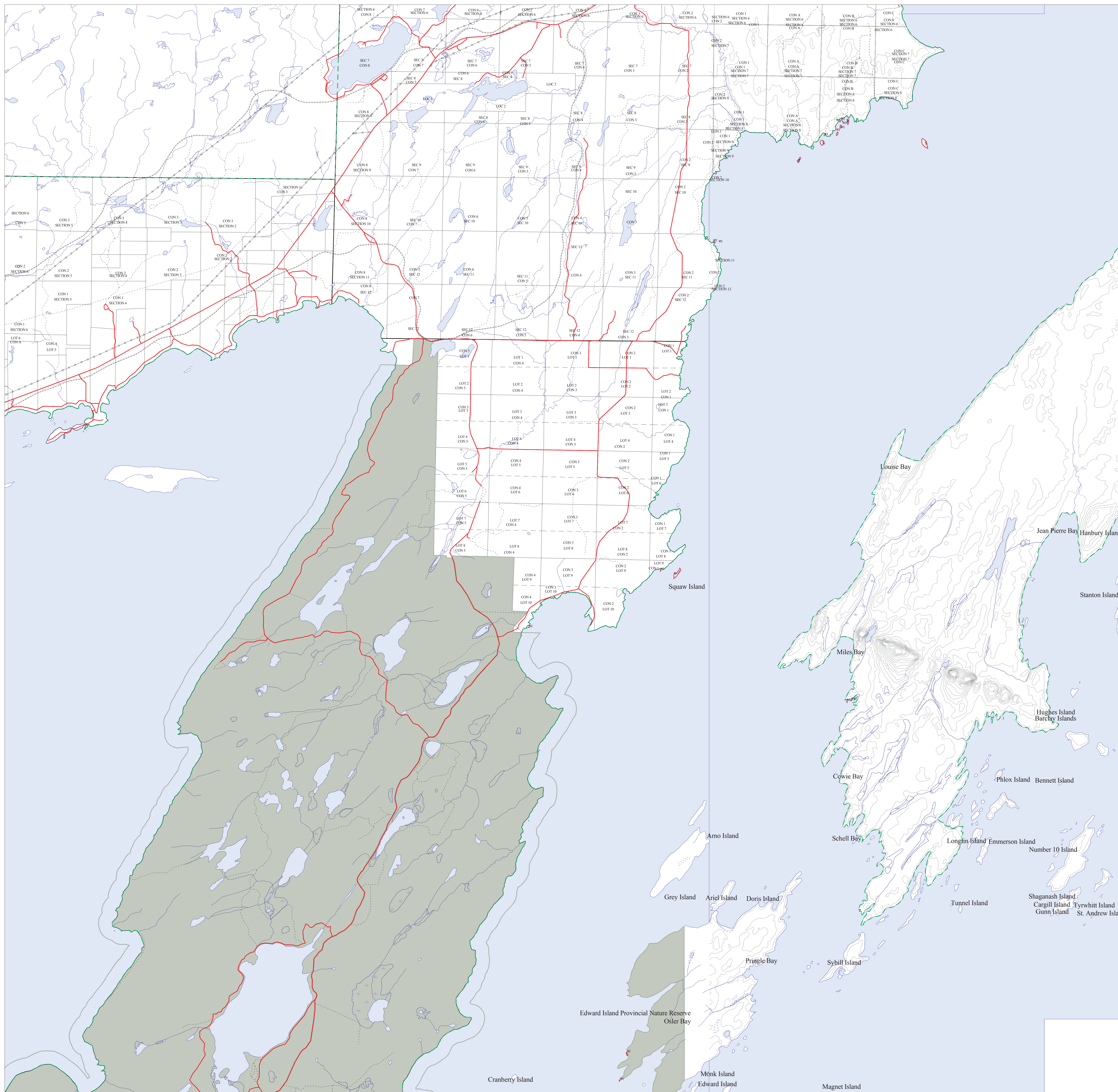
Mining Lands Consultant Thunder Bay

District Manager, Thunder Bay, Ontario, MNR

MNR File (Peterborough): 195150

W-TB-23/06

National Marine Conservation Area
 Tile: 6
 Mining Withdrawal
 MNR Proposed Boundary



Legend

- NMCA - Mining Withdrawal Area
- lakes
- wetlands
- rivers/streams
- rivers/streams - intermittent
- roads
- railways
- bridges
- transmission lines
- trails-portages
- airstrips
- township boundary
- lot line - surveyed
- lot line - unsurveyed
- road allowance (not to scale)
- contour line (10m interval)
- patented land
- existing protected areas
- OLL Enhanced Management Area
- forest reserve
- FMU boundary

2 1	2 2	2 3	2 4	2 5
1 6	1 7	1 8	1 9	2 0
1 1	1 2	1 3	1 4	1 5
6	7	8	9	1 0
1	2	3	4	5

Areas indicated with the letters 'NS' are excluded from the site boundary.

PROJECTION UTM
 ZUNITS NO
 UNITS METERS
 DATUM NAD83
 SPHEROID GRS1980
 XSHIFT 0.000000000
 YSHIFT 0.000000000
 ZONE 16
 PARAMETERS

Notes:
 Published on February 06, 2006
 For Internal Use Only
 Data Source: NRVIS Database, 1999 for Districts:
 THUNDER BAY, NIPIGON

Land Tenure: NRVIS Database, 1999

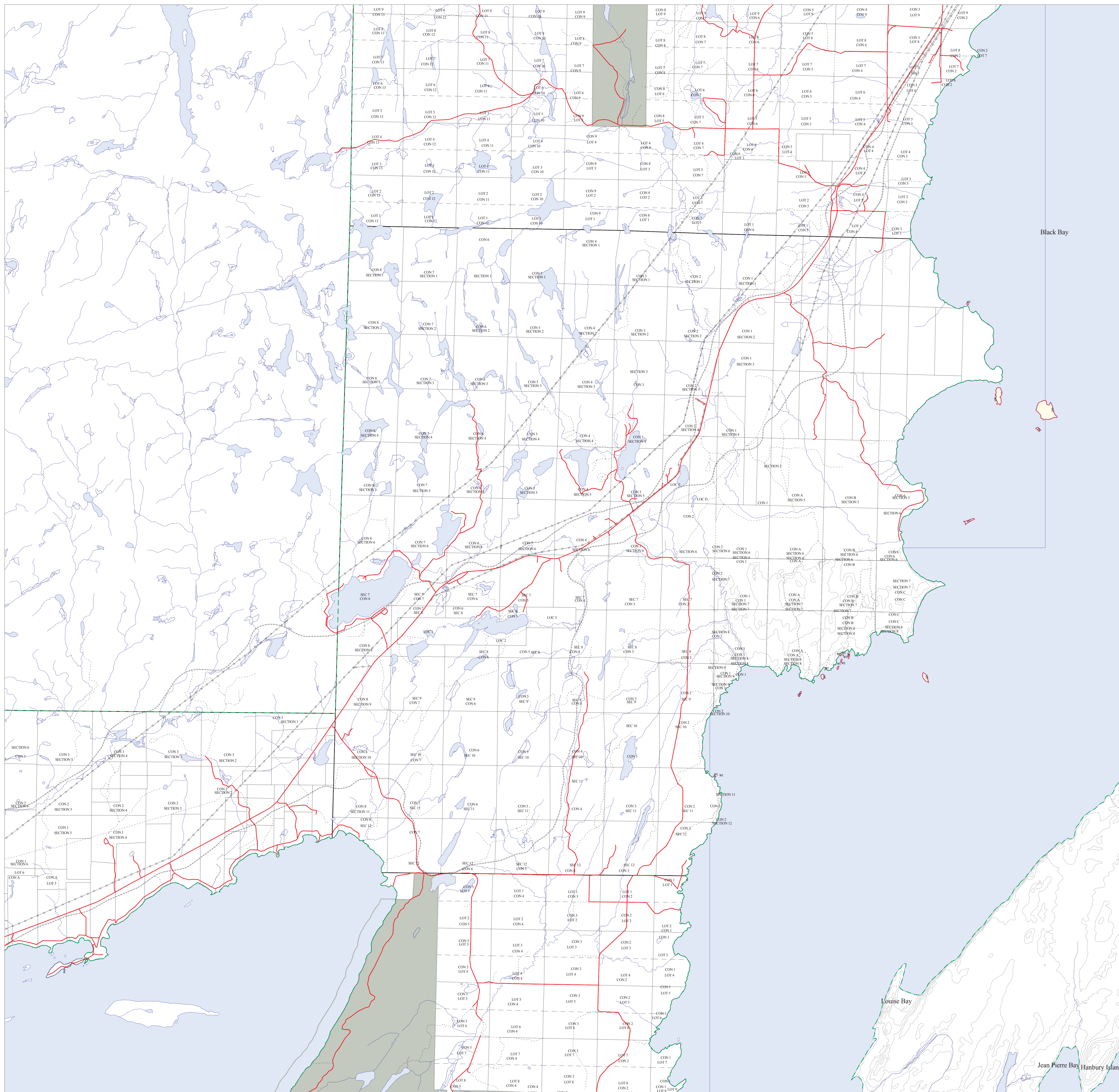
Filename: NMCA0602066-RW.gra

Date of coverage export file: 03/02/2006



W-TB-23/06

National Marine Conservation Area
 Title: 11
 Mining Withdrawal
 MNR Proposed Boundary



Legend

- NMCA - Mining Withdrawal Area
- lakes
- wetlands
- rivers/streams
- rivers/streams - intermittent
- roads
- railways
- bridges
- transmission lines
- trails-portages
- airstrips
- township boundary
- lot line - surveyed
- lot line - unsurveyed
- road allowance (not to scale)
- contour line (10m interval)
- patented land
- existing protected areas
- OLL Enhanced Management Area
- forest reserve
- FMU boundary

2 1	2 2	2 3	2 4	2 5
1 6	1 7	1 8	1 9	2 0
1 1	1 2	1 3	1 4	1 5
6	7	8	9	1 0
1	2	3	4	5

Areas indicated with the letters 'NS' are excluded from the site boundary.

PROJECTION UTM
 ZUNITS NO
 UNITS METERS
 DATUM NAD83
 SPHEROID GRS1980
 XSHIFT 0.000000000
 YSHIFT 0.000000000
 ZONE 16
 PARAMETERS

Notes:

Published on February 06, 2006
 For Internal Use Only
 Data Source: NRVIS Database, 1999 for Districts:
 THUNDER BAY, NIPIGON
 Land Tenure: NRVIS Database, 1999
 Filename: NMCA06020611-RW.gra
 Date of coverage export file: 03/02/2006



W-TB-23/06

National Marine Conservation Area
 Tile: 12
 Mining Withdrawal
 MNR Proposed Boundary



Legend

- NMCA - Mining Withdrawal Area
- lakes
- wetlands
- rivers/streams
- rivers/streams - intermittent
- roads
- railways
- bridges
- transmission lines
- trails-portsages
- airstrips
- township boundary
- lot line - surveyed
- lot line - unsurveyed
- road allowance (not to scale)
- contour line (10m interval)
- patented land
- existing protected areas
- forest reserve
- FMU boundary
- OLL Enhanced Management Area

2 1	2 2	2 3	2 4	2 5
1 6	1 7	1 8	1 9	2 0
1 1	1 2	1 3	1 4	1 5
6	7	8	9	1 0
1	2	3	4	5

Areas indicated with the letters 'NS' are excluded from the site boundary.

PROJECTION UTM
 UNITS NO
 UNITS METERS
 DATUM NAD83
 SPHEROID GRS1980
 XSHIFT 0.000000000
 YSHIFT 0.000000000
 ZONE 16
 PARAMETERS

Notes:

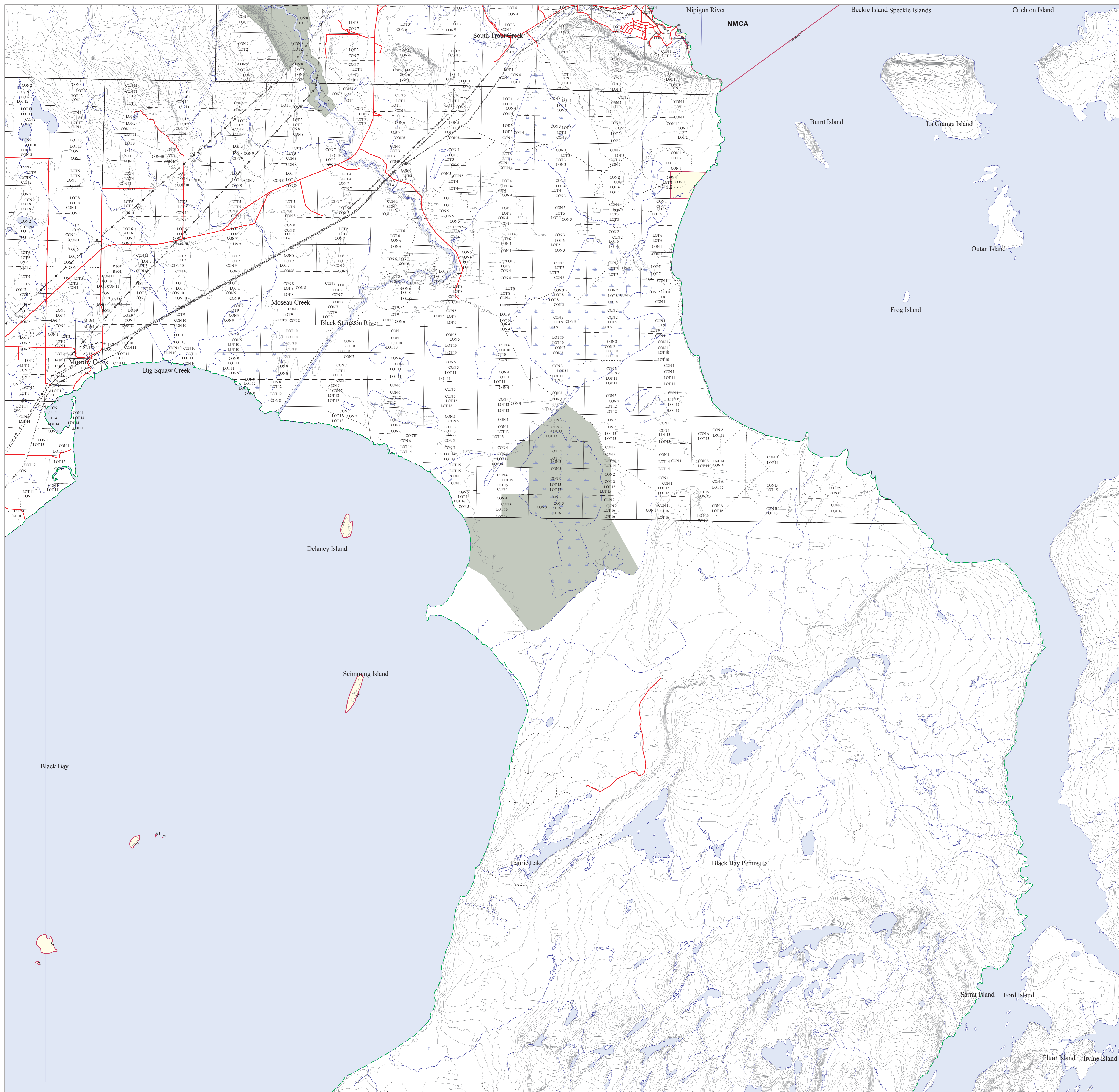
Published on February 06, 2006
 For Internal Use Only
 Data Source: NRVIS Database, 1999 for Districts:
 THUNDER BAY, NIPIGON

Land Tenure: NRVIS Database, 1999

Filename: NMCA060206(12-RW).gra

Date of coverage export file: 03/02/2006





Legend

- NMCA - Mining Withdrawal Area
- lakes
- wetlands
- rivers/streams
- rivers/streams - intermittent
- roads
- railways
- bridges
- transmission lines
- trails-ports
- airstrips
- township boundary
- lot line - surveyed
- lot line - unsurveyed
- road allowance (not to scale)
- contour line (10m interval)
- patented land
- existing protected areas
- OLL Enhanced Management Area
- forest reserve
- FMU boundary

2 1	2 2	2 3	2 4	2 5
1 6	1 7	1 8	1 9	2 0
1 1	1 2	1 3	1 4	1 5
6	7	8	9	1 0
1	2	3	4	5

Areas indicated with the letters 'NS' are excluded from the site boundary.

PROJECTION UTM
 ZUNITS NO
 UNITS METERS
 DATUM NAD83
 SPHEROID GRS1980
 XSHIFT 0.000000000
 YSHIFT 0.000000000
 ZONE 16
 PARAMETERS

Notes:

Published on February 06, 2006
 For Internal Use Only
 Data Source: NRVIS Database, 1999 for Districts:
 THUNDER BAY, NIPIGON

Land Tenure: NRVIS Database, 1999

Filename: NMCA06020617-RW.gra

Date of coverage export file: 03/02/2006



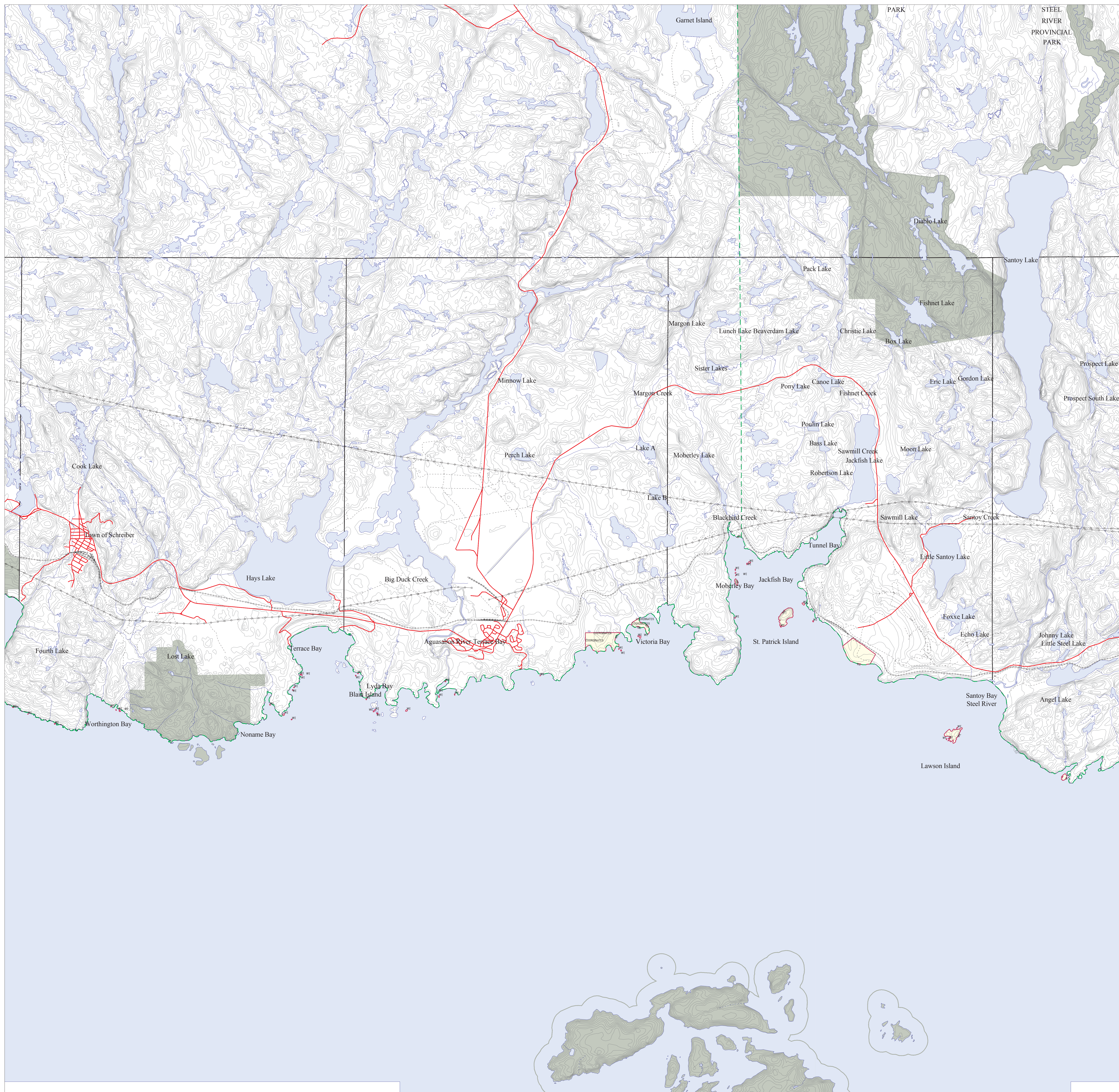
W-TB-23/06

National Marine Conservation Area
 Tile: 20
 Mining Withdrawal
 MNR Proposed Boundary

Legend

- NMCA - Mining Withdrawal Area
- lakes
- wetlands
- rivers/streams
- rivers/streams - intermittent
- roads
- railways
- bridges
- transmission lines
- trails-portages
- airstrips
- township boundary
- lot line - surveyed
- lot line - unsurveyed
- road allowance (not to scale)
- contour line (10m interval)
- patented land
- existing protected areas
- OLL Enhanced Management Area
- forest reserve
- FMU boundary

2 1	2 2	2 3	2 4	2 5
1 6	1 7	1 8	1 9	2 0
1 1	1 2	1 3	1 4	1 5
6	7	8	9	1 0
1	2	3	4	5



Areas indicated with the letters 'NS' are excluded from the site boundary.

PROJECTION UTM
 ZUNITS NO
 UNITS METERS
 DATUM NAD83
 SPHEROID GRS1980
 XSHIFT 0.000000000
 YSHIFT 0.000000000
 ZONE 16
 PARAMETERS

Notes:

Published on February 06, 2006
 For Internal Use Only
 Data Source: NRVIS Database, 1999 for Districts:
 THUNDER BAY, NIPIGON
 Land Tenure: NRVIS Database, 1999
 Filename: NMCA06020620-RW.gra
 Date of coverage export file: 03/02/2006

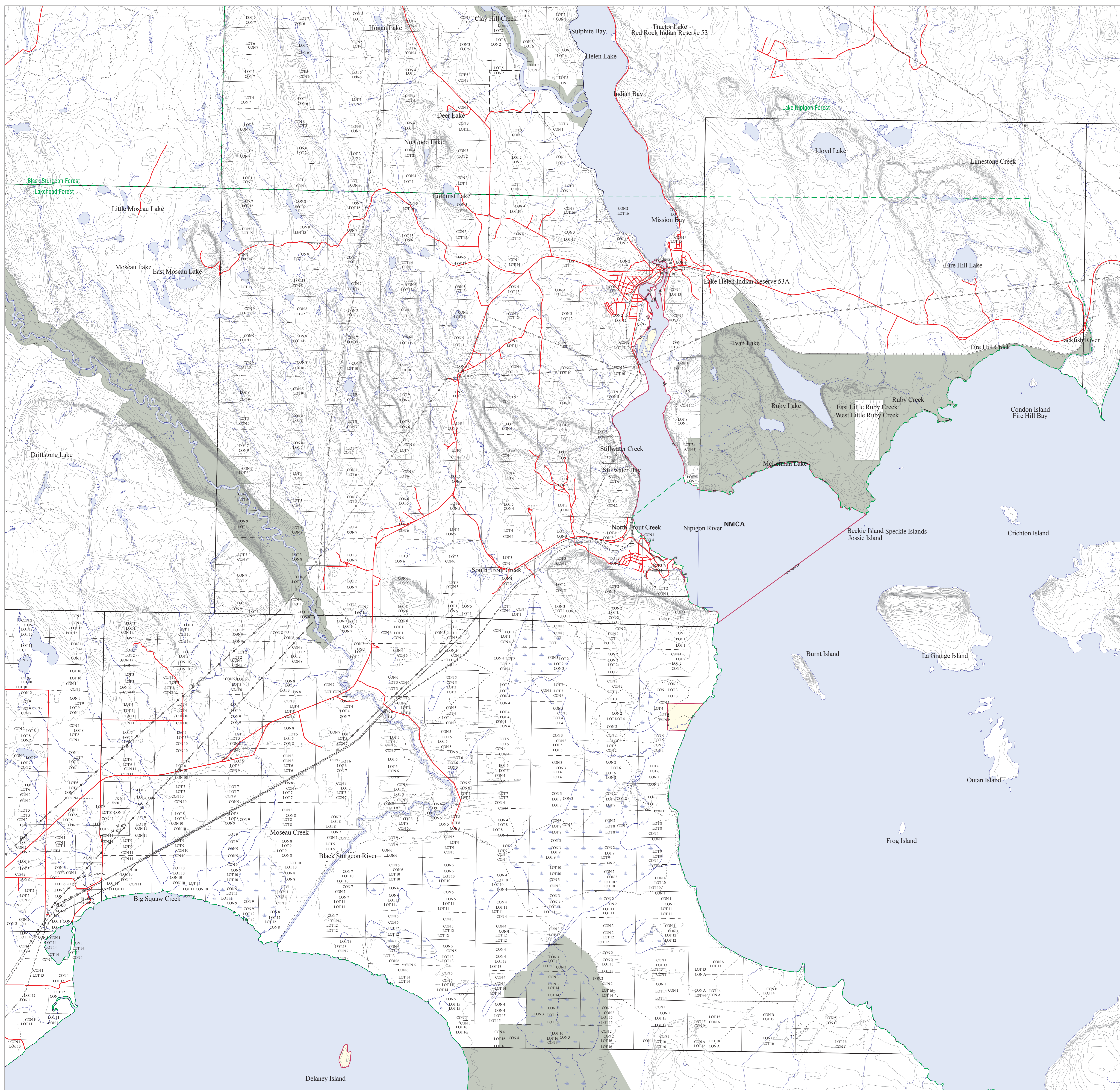


MNR Proposed Boundary

Legend

- NMCA - Ontario's Living Legacy Land Use Strategy
- lakes
- wetlands
- rivers/streams
- rivers/streams - intermittent
- roads
- railways
- bridges
- transmission lines
- trails-portages
- airstrips
- township boundary
- lot line - surveyed
- lot line - unsurveyed
- road allowance (not to scale)
- contour line (10m interval)
- patented land
- existing protected areas
- OLL Enhanced Management Area
- forest reserve
- FMU boundary

2 1	2 2	2 3	2 4	2 5
1 6	1 7	1 8	1 9	2 0
1 1	1 2	1 3	1 4	1 5
6	7	8	9	1 0
1	2	3	4	5



Areas indicated with the letters 'NS' are excluded from the site boundary.

PROJECTION UTM
 ZUNITS NO
 UNITS METERS
 DATUM NAD83
 SPHEROID GRS1980
 XSHIFT 0.000000000
 YSHIFT 0.000000000
 ZONE 16
 PARAMETERS

Notes:
 Published on March 20, 2006
 For Internal Use Only
 Data Source: NRVIS Database, 1999 for Districts:
 NIPIGON, THUNDER BAY
 Land Tenure: NRVIS Database, 1999
 Filename: NMCA06032022-RW.ga
 Date of coverage export file: 14/02/2006



W-TB-23/06

National Marine Conservation Area
 Tile: 23
 Mining Withdrawal
 MNR Proposed Boundary

Legend

- NMCA - Mining Withdrawal Area
- lakes
- wetlands
- rivers/streams
- rivers/streams - intermittent
- roads
- railways
- bridges
- transmission lines
- trails-portages
- airstrips
- township boundary
- lot line - surveyed
- lot line - unsurveyed
- road allowance (not to scale)
- contour line (10m interval)
- patented land
- existing protected areas
- OLL Enhanced Management Area
- forest reserve
- FMU boundary

2 1	2 2	2 3	2 4	2 5
1 6	1 7	1 8	1 9	2 0
1 1	1 2	1 3	1 4	1 5
6	7	8	9	1 0
1	2	3	4	5



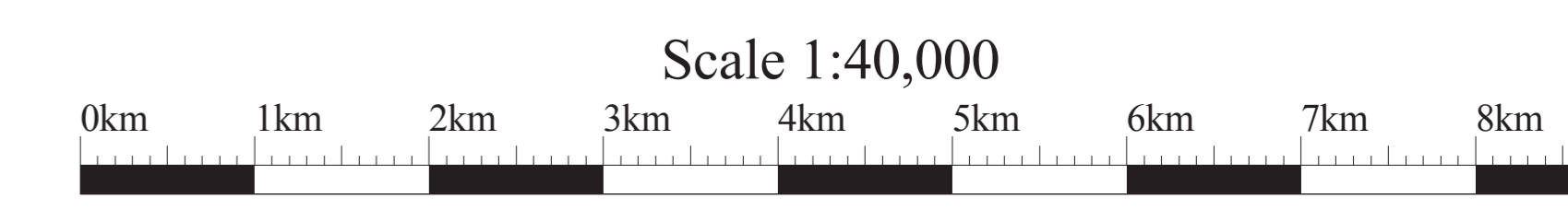
Areas indicated with the letters 'NS' are excluded from the site boundary.

PROJECTION UTM
 ZUNITS NO
 UNITS METERS
 DATUM NAD83
 SPHEROID GRS1980
 XSHIFT 0.000000000
 YSHIFT 0.000000000
 ZONE 16
 PARAMETERS

Notes:
 Published on February 06, 2006
 For Internal Use Only
 Data Source: NRVIS Database, 1999 for Districts:
 THUNDER BAY, NIPIGON

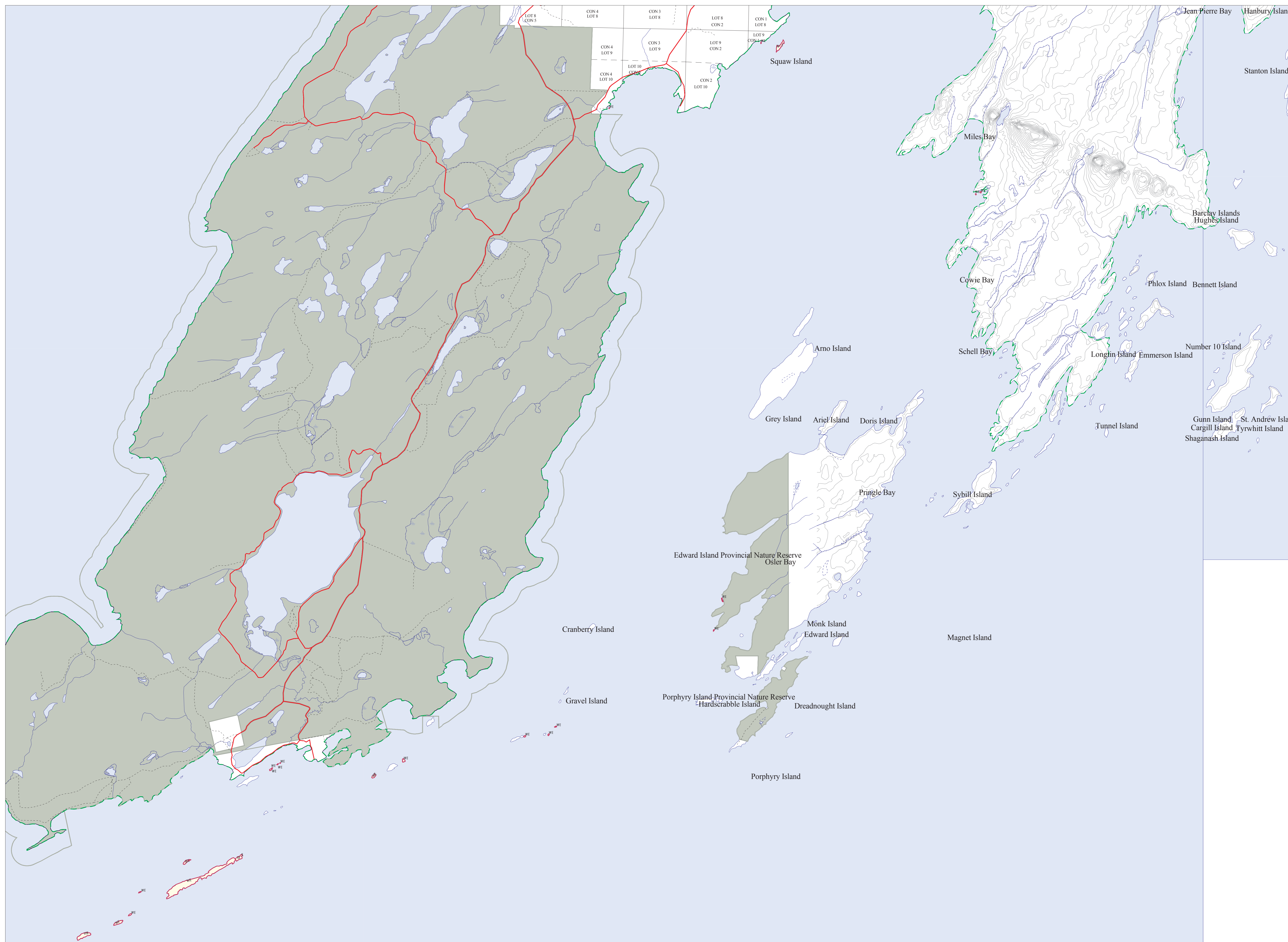
Land Tenure: NRVIS Database, 1999
 Filename: NMCA06020623-RW.gra

Date of coverage export file: 03/02/2006



W-TB-23/06

National Marine Conservation Area
 Tile: 1
 Mining Withdrawal
 MNR Proposed Boundary



Legend

- NMCA - Mining Withdrawal Area
- lakes
- wetlands
- rivers/streams
- rivers/streams - intermittent
- roads
- railways
- bridges
- transmission lines
- trails-portages
- airstrips
- township boundary
- lot line - surveyed
- lot line - unsurveyed
- road allowance (not to scale)
- contour line (10m interval)
- patented land
- existing protected areas
- OLL Enhanced Management Area
- forest reserve
- FMU boundary

2 1	2 2	2 3	2 4	2 5
1 6	1 7	1 8	1 9	2 0
1 1	1 2	1 3	1 4	1 5
6	7	8	9	1 0
1	2	3	4	5

Areas indicated with the letters 'NS' are excluded from the site boundary.

PROJECTION UTM
 ZUNITS NO
 UNITS METERS
 DATUM NAD83
 SPHEROID GRS1980
 XSHIFT 0.000000000
 YSHIFT 0.000000000
 ZONE 16
 PARAMETERS

Notes:

Published on February 14, 2006
 For Internal Use Only
 Data Source: NRVIS Database, 1999 for Districts:
 NIPIGON, THUNDER BAY
 Land Tenure: NRVIS Database, 1999
 Filename: NMCA060214t1-RW.gra
 Date of coverage export file: 14/02/2006

