

P Series

Table with columns: Map No., Scale, Year, Description, Related Publication(s), Notes. Lists geological maps from 1999 to 2017.

2000 Series

Table with columns: Map No., Scale, Year, Description, Related Publication(s), Notes. Lists geological maps from 2000 to 2017.

ABBREVIATIONS

Table of abbreviations for geological terms, including AC, AMI, BT, CN, COMDA, DAI, ELI, FNGMI, GC, GP, LMRD, MD, MDC, MN, MRD, MZ, NODA, NP, OFR, OM, OTH, QLI, SG, TA, TGI, etc.

WHAT THIS INDEX PROVIDES

This index shows all maps published by the Ontario Geological Survey between 1991 and 2020 that pertain to bedrock geology and related metallic and industrial mineral resources.



Ontario Geological Survey INDEX TO MAPS BEDROCK GEOLOGY 1991-2020 NORTHERN SHEET

Scale 1:1 000 000

© Queen's Printer for Ontario, 2021.

This map is published with the permission of the Director, Ontario Geological Survey.



SYMBOLS

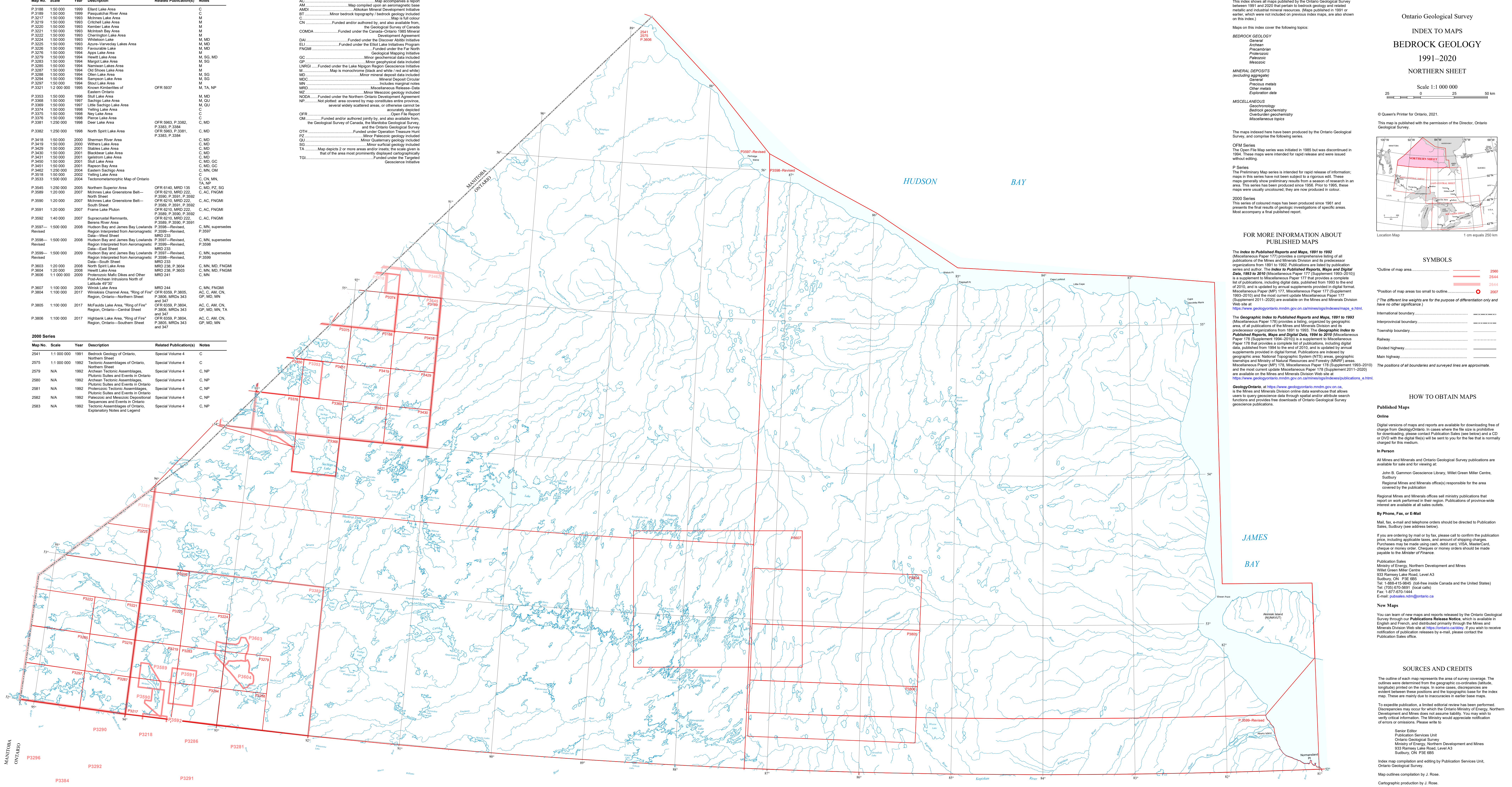
- Outline of map area (2541, 2544, 2547)
International boundary
Provincial boundary
Township boundary
Railway
Divided highway
Main highway

HOW TO OBTAIN MAPS

Published Maps Online
Digital versions of maps and reports are available for downloading free of charge from GeologyOntario.

SOURCES AND CREDITS

The outline of each map represents the area of survey coverage. The outlines were determined from the geographic co-ordinates (latitude, longitude) printed on the maps.



Users of OGS products should be aware that Indigenous communities may have Aboriginal or treaty rights or other interests that overlap with areas of mineral potential and exploration.

Parts of this publication may be quoted if credit is given. It is recommended that reference to this publication be made in the following form: Ontario Geological Survey 2021. Index to maps, bedrock geology 1991-2020, northern sheet, Ontario Geological Survey, Index Maps, scale 1:1 000 000.