

ABBREVIATIONS
AC Map accompanies a report
AM Map compiled upon an aeromagnetic base
AMD Alaskan Mineral Development Initiative
BT Minor bedrock topography by bedrock geology included
C Not plotted; area covered by map constitutes entire province, several widely scattered areas, or otherwise cannot be accurately depicted
COMDA Funded under the Canada-Ontario 1985 Mineral Development Agreement
DAI Funded under the Discover Adbits Initiative
FGMI Funded under the Far North
GC Geographical Mapping Initiative
GC Minor geological data included
GFI Geoscience Initiative
MD Map is monochrome (black and white)
MDC Mineral Deposit Circular
MN Includes marginal notes
MRD Miscellaneous Release-Data
MZ Minor Mesozoic geology included
NOCA Funded under the Northern Ontario Development Agreement
NP Not plotted; area covered by map constitutes entire province, several widely scattered areas, or otherwise cannot be accurately depicted
OFR Open File Report
OM Funded and/or authored jointly by, and also available from, the Geological Survey of Canada, the Geological Survey of Canada, the Geological Survey of Canada, and the Ontario Geological Survey
OTH Funded under Operation Treasure Hunt
PZ Minor Paleozoic geology included
QU Minor Quaternary geology included
SG Minor surficial geology included
TA Map depicts 2 or more areas and/or insets; the scale given is that of the area most prominently displayed cartographically
TGI Funded under the Targeted Geoscience Initiative

OFM Series
Map No. Scale Year Description Related Publication(s) Notes
OFM 168 1:20 000 1991 Grimsithorpe Area M
OFM 178 1:150 000 1991 Whiskey Lake Area, East Half M, ELI
OFM 180 1:50 000 1991 Part of Belmont Township M, BT
OFM 184 1:50 000 1992 Belmont Township, Bedrock Resources M, MN
OFM 198 1:50 000 1992 Northern Bruce Peninsula M, superseded by P.3298
OFM 205 1:20 000 1992 Aberdeen Area M
OFM 222 1:50 000 1993 Orlia Area M
OFM 233 1:20 000 1994 May Township M
OFM 235 1:50 000 1994 Fenelon Falls Area M

P Series
Map No. Scale Year Description Related Publication(s) Notes
P.2845 1:20 000 2006 Porter and Vernon Townships MRD 197, C, MD, MN
P.2846 1:50 000 2006 Jocko River Area OFR 5854, P.2847 C, MD
P.2847 1:50 000 2006 Songria Area C, MD
P.3180 1:20 000 2001 Elzevir Area (North Half) C, PZ
P.3181 1:20 000 2001 Elzevir Area (South Half) C, PZ
P.3186 1:150 000 1994 Whiskey Lake Greenstone Belt M
OFR 5883 C
P.3187 1:100 000 1998 Bedrock Geology, Regional Special Volume 6 C
Municipality of Sudbury M, MD
P.3191 1:50 000 1993 Central Bruce Peninsula OFR 5856 M
P.3215 1:15 840 1993 Ompa Lake Area, West Half OFR 5864, P.3216 M
P.3216 1:15 840 1993 Ompa Lake Area, East Half OFR 5854, P.3215 M
P.3236 1:50 000 1993 Southern Bruce Peninsula OFR 5875 M
P.3267 1:20 000 1994 Grimsithorpe Area, Hastings and Lennox and Addington Counties OFR 5894 M, PZ
P.3270 1:20 000 2001 Bon Echo Provincial Park OFR 5899 C, TA, MD, supersedes P.3278
P.3274 1:20 000 1994 East Bull Lake Gabbro-Anorthosite Intrusion OFR 5923 M, TA, MD
P.3298 1:20 000 1994 Aberdeen Area OFR 5903 M, supersedes OFM 205
P.3306 1:20 000 1996 Garson Township M, MD, supersedes P.3308
P.3335 1:20 000 1995 Palmerston Lake Area, Frontenac and Lanark Counties M, PZ, MD
P.3336 1:20 000 1995 Miguwa Area, Frontenac, Lennox and Addington Counties M, MD
P.3339 1:50 000 1995 Penstangushene-Elmvale Area M, MD
P.3341 1:20 000 1996 Blezard Township M, MD, supersedes P.3341
P.3355 1:50 000 1998 Bancroft Area C, PZ
P.3402 1:50 000 2000 Bannockburn Area C, PZ
P.3403 1:50 000 2000 Coe Hill Area C, MD
P.3404 1:50 000 2000 Burlington Area C, PZ
P.3405 1:50 000 2000 Gooderham Area C, PZ
P.3406 1:50 000 2000 Campbellford Area C, PZ, MD
P.3407 1:50 000 2000 Orlia Area C, MD
P.3408 1:50 000 2000 Elmvalle Area C, PZ
P.3409 1:50 000 2000 Gravenhurst Area C, PZ
P.3410 1:50 000 2000 Penstangushene Area C, MD
P.3411 1:50 000 2000 Brantford Area C, MD
P.3412 1:50 000 2000 Lake Joseph Area C, MD
P.3413 1:50 000 2000 Hurville Area C, MD
P.3414 1:50 000 2000 Orville Area C, MD
P.3415 1:50 000 2001 Minden Area P.3416 C, MD, PZ, GC
P.3416 1:50 000 2001 Haliburton Area P.3416 C, MD, GC
P.3427 1:20 000 2000 Street Township OFR 6078 C
P.3428 1:4000 2001 Timmie Creek Area, Street Township OFR 6041 C
P.3432 1:20 000 2001 Crear Township C, MD, PZ
P.3433 1:20 000 2001 Dana Township C, OU
P.3437 1:50 000 2001 Denbigh Area C, PZ, MD, GC
P.3438 1:50 000 2001 Cuyte Forks Area C, MD, GC
P.3439 1:50 000 2001 Miguwa Lake Area C, PZ, MD, GC
P.3440 1:50 000 2001 Sharbot Lake Area C, PZ, MD, GC
P.3441 1:50 000 2001 Kakazar Area C, PZ, MD, GC
P.3442 1:50 000 2001 Titchborne Area C, PZ, MD, GC
P.3443 1:50 000 2006 Choyne-Plym-Ampah Area OFR 5454 C, MD, GC
P.3444 1:50 000 2001 Mafic Intrusive Rocks of Flett and Angus Townships OFR 6090 C, MD, TA, GP
P.3453 1:50 000 2001 C. MD, GC, superseded by P.3578
P.3525 1:50 000 2003 Kanagana Lake Area C, MD, SG, GC
P.3526 1:50 000 2003 Witherforce Area C, MD, SG, GC
P.3533 1:1 500 000 2004 Tectonometamorphic Map of Ontario C, CN, MD, TA, NP
P.3535 1:20 000 2004 Henry and Loughlin Townships C, TA, GP, GC
P.3548 1:50 000 2004 Key Harbour Area OFR 6143, P.3549 to P.3552 C, COMDA, GC, MD, PZ
P.3549 1:50 000 2004 Naiscoot Area OFR 6143, P.3548 to P.3552 C, COMDA, GC, MD, PZ
P.3550 1:50 000 2004 Perry Sound Area OFR 6143, P.3548 to P.3552 C, COMDA, GC, MD, PZ
P.3551 1:50 000 2004 Sans Soud Area OFR 6143, P.3548 to P.3552 C, COMDA, GC, MD, PZ
P.3552 1:50 000 2004 Penstangushene Area OFR 6143, P.3548 to P.3551 C, COMDA, GC, MD, PZ
P.3578 1:50 000 2007 Crear-River Valley Area C, GP, MD, TA, superseded by P.3453
P.3584 1:20 000 2007 Baldwin Township MRD 212 C, MD, MN
P.3596 1:50 000 2011 Completion, East Bull Lake and Agnew Intrusions MRD 213 C, MD, MN
P.3600 1:50 000 2010 Western Grimsithorpe Domain MRD 240 C, GP, MD, MN, TA
P.3605 1:20 000 2010 Cavendish Township and Environs MRD 287 C, MD, TA
P.3760 1:20 000 2011 Hungry Lake Area, Grenville Province MRD 309 C, GP, MD, MN, TA
P.3773 1:20 000 2013 Albanet Township MRD 332 C, GP, MD, MN
P.3774 1:20 000 2013 Raglan Hills Metagabbro MRD 309 C, GP, MD, MN, TA
P.3775 1:20 000 2013 Henry and Loughlin Townships MRD 332 C, GP, MD, MN
P.3778 1:20 000 2014 Morn and Otter Townships, Southern and Superior Provinces C, MD
P.3779 1:20 000 2014 Varley Township, Southern and Superior Provinces C, MD
P.3781 1:20 000 2015 Chenaux Gabbro, Grenville Province OFRs 6299 and 6331, MRD 316 C, AC, GP, MD
P.3783 1:20 000 2014 Adnamo Area, Grenville Province OFR 6331, P.3784, MRD 316 C, AC, GP, MD, MN
P.3784 1:20 000 2014 Horton Area, Grenville Province OFR 6331, P.3783, MRD 316 C, AC, GP, MD, MN
P.3785 1:20 000 2016 Mud Lake Area, Grenville Province OFR 6331, P.3808, P.3807, MRDs 327, 350, 356 PZ
P.3792, P.3793 C, AM, GP, MD, MN
P.3791 1:100 000 2015 Precambrian Geology of Eastern Ontario Interpreted from Aeromagnetic and Compiled Geological Data--Northwest Sheet P.3791, P.3793 C, AM, GP, MD, MN, MZ
P.3792 1:100 000 2015 Precambrian Geology of Eastern Ontario Interpreted from Aeromagnetic and Compiled Geological Data--Northwest Sheet P.3791, P.3792 C, AM, GP, MD, MN
P.3793 1:100 000 2015 Precambrian Geology of Eastern Ontario Interpreted from Aeromagnetic and Compiled Geological Data--South Sheet P.3791, P.3792 C, AM, GP, MD, MN
P.3807 1:20 000 2018 Centennial Lake Area, Grenville Province OFR 6331, P.3808, P.3785, MRDs 327, 350, 356 C, GP, MD, MN
P.3808 1:20 000 2017 Black Donald Lake Area, Grenville Province OFR 6331, P.3807, P.3785, MRDs 327, 350, 356 C, GP, MD, MN, PZ
P.3810 1:50 000 2018 Dunville Area C, MN, PZ
P.3811 1:50 000 2017 Welland-Fort Erie Area C, MN, PZ
P.3823 1:150 000 2018 Drury Township, Southwest Sudbury Structure OFR 6346, MRD 369 MD, MN

MINERAL DEPOSITS (excluding aggregate)
General
Precambrian
Proterozoic
Paleozoic
Mesozoic

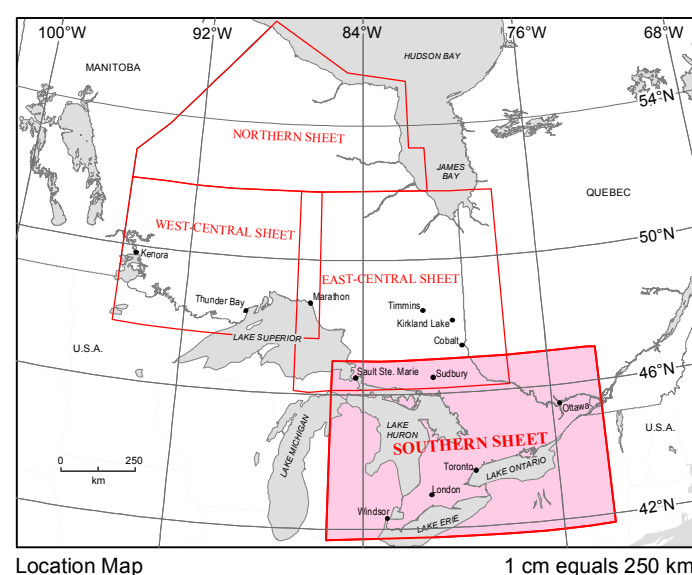
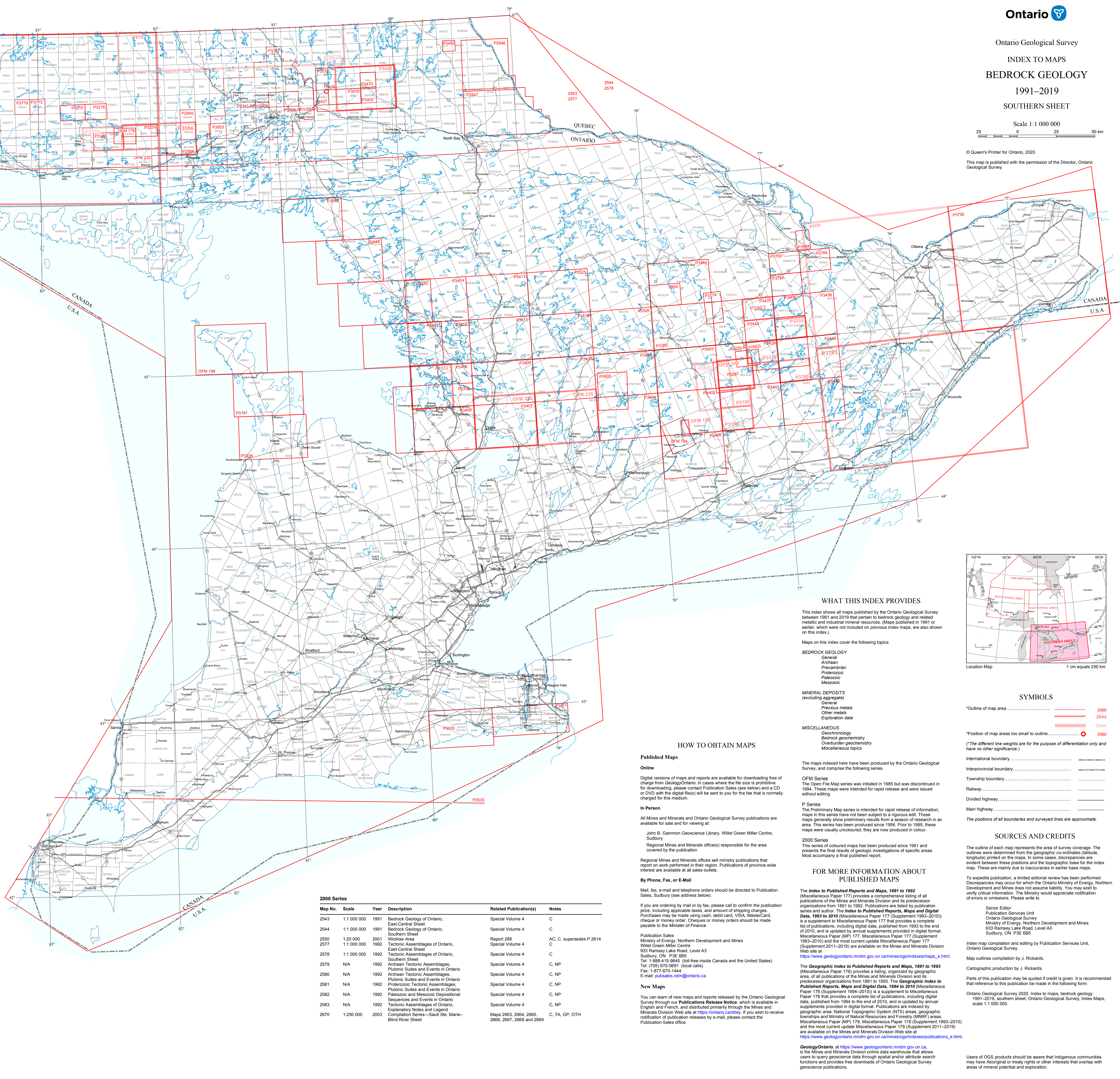
MISCELLANEOUS
Geochronology
Bedrock geochemistry
Overburden geochemistry
Miscellaneous topics

HOW TO OBTAIN MAPS
Published Maps
Online
Digital versions of maps and reports are available for downloading free of charge from GeoOntario. In cases where the file size is prohibitive for downloading, please contact Publication Sales (see below) and a CD or DVD with the digital files will be sent to you for the fee that is normally charged for this medium.

IN PERSON
All Mines and Minerals and Ontario Geological Survey publications are available for sale and for viewing at:
John B. Gammon Geoscience Library, Willet Green Miller Centre, Sudbury
Regional Mines and Minerals office(s) responsible for the area covered by the publication
Regional Mines and Minerals offices sell ministry publications that report on work performed in their region. Publications of province-wide interest are available at all sales outlets.

By Phone, Fax, or E-Mail
Mail, fax, e-mail and telephone orders should be directed to Publication Sales, Sudbury (see address below).
If you are ordering by mail or by fax, please call to confirm the publication price, including applicable taxes, and amount of shipping charges. Purchases may be made using cash, debit card, VISA, MasterCard, cheque or money order. Cheques or money orders should be made payable to the Minister of Finance.

NEW MAPS
You can learn of new maps and reports released by the Ontario Geological Survey through our Publications Release Notice, which is available in English and French, and distributed primarily through the Mines and Minerals Division Web site at https://ontario.ca/ogm. If you wish to receive notification of publication releases by e-mail, please contact the Publication Sales office.
GeoOntario, at https://www.geogov.on.ca, is the Mines and Minerals Division's online data warehouse that allows users to query geoscience data through spatial and/or attribute search functions and provides free downloads of Ontario Geological Survey geoscience publications.



WHAT THIS INDEX PROVIDES

This index shows all maps published by the Ontario Geological Survey between 1991 and 2019 that pertain to bedrock geology and related metallic and industrial mineral resources. (Maps published in 1991 or earlier, which were not included on previous index maps, are also shown on this index.)

Maps on this index cover the following topics:

BEDROCK GEOLOGY
General
Archean
Precambrian
Proterozoic
Paleozoic
Mesozoic

MINERAL DEPOSITS (excluding aggregate)
General
Precambrian
Proterozoic
Other metals
Exploration data

MISCELLANEOUS
Geochronology
Bedrock geochemistry
Overburden geochemistry
Miscellaneous topics

The maps indexed here have been produced by the Ontario Geological Survey, and comprise the following series:

OFM Series
The Open File Map series was initiated in 1985 but was discontinued in 1994. These maps were intended for rapid release and were issued without editing.

P Series
The Preliminary Map series is intended for rapid release of information; maps in this series have not been subject to a rigorous edit. These maps generally show preliminary results from a season of research in an area. This series has been produced since 1955. Prior to 1995, these maps were usually uncoloured; they are now produced in colour.

2000 Series
This series of coloured maps has been produced since 1961 and presents the final results of geologic investigations of specific areas. Most accompany a full published report.

FOR MORE INFORMATION ABOUT PUBLISHED MAPS

The Index to Published Reports and Maps, 1891 to 1992 (Miscellaneous Paper 177) provides a comprehensive listing of all publications of the Mines and Minerals Division and its predecessor organizations from 1891 to 1992. Publications are listed by publication series and author. The Index to Published Reports, Maps and Digital Data, 1993 to 2019 (Miscellaneous Paper 177, Supplement 1993-2019) is a supplement to Miscellaneous Paper 177 that provides a complete list of publications, including digital data, published from 1993 to the end of 2019, and is updated by annual supplements provided in digital format. Miscellaneous Paper (MP) 177, Miscellaneous Paper 177 (Supplement 1993-2019) and the most current update Miscellaneous Paper 177 (Supplement 2011-2019) are available on the Mines and Minerals Division Web site at https://www.geogov.on.ca/mineslogs/indexes/publications_e.html.

The Geographic Index to Published Reports and Maps, 1891 to 1993 (Miscellaneous Paper 178) provides a listing, organized by geographic area, of all publications of the Mines and Minerals Division and its predecessor organizations from 1891 to 1993. The Geographic Index to Published Reports, Maps and Digital Data, 1994 to 2019 (Miscellaneous Paper 178, Supplement 1994-2019) is a supplement to Miscellaneous Paper 178 that provides a complete list of publications, including digital data, published from 1994 to the end of 2019, and is updated by annual supplements provided in digital format. Publications are indexed by geographic area: National Topographic System (NTS) areas, geographic townships and Ministry of Natural Resources and Forestry (MNRF) areas. Miscellaneous Paper (MP) 178, Miscellaneous Paper 178 (Supplement 1993-2019) and the most current update Miscellaneous Paper 178 (Supplement 2011-2019) are available on the Mines and Minerals Division Web site at https://www.geogov.on.ca/mineslogs/indexes/publications_e.html.

GeoOntario, at https://www.geogov.on.ca, is the Mines and Minerals Division's online data warehouse that allows users to query geoscience data through spatial and/or attribute search functions and provides free downloads of Ontario Geological Survey geoscience publications.

SYMBOLS

- *Outline of map area.
- - - - - 2560
- - - - - 2544
- - - - - 2544
- - - - - 2544
- - - - - 2560
- - - - - 2560
International boundary
Interprovincial boundary
Township boundary
Railway
Divided highway
Main highway
The positions of all boundaries and surveyed lines are approximate.

SOURCES AND CREDITS

The outline of each map represents the area of survey coverage. The outlines were determined from the geographic co-ordinates (latitude, longitude) printed on the maps. In some cases, discrepancies are evident between these positions and the topographic base for the index map. These are mainly due to inaccuracies in earlier base maps.

To expedite publication, a limited editorial review has been performed. Discrepancies may occur for which the Ontario Ministry of Energy, Northern Development and Mines does not assume liability. You may wish to verify critical information. The Ministry would appreciate notification of errors or omissions. Please write to:

Senior Editor
Publication Services Unit
Ontario Geological Survey
Ministry of Energy, Northern Development and Mines
933 Ramsey Lake Road, Level A3
Sudbury, ON P3E 6B5

Index map compilation and editing by Publication Services Unit, Ontario Geological Survey.

Map outlines compilation by J. Rickards.

Cartographic production by J. Rickards.

Parts of this publication may be quoted if credit is given. It is recommended that reference to this publication be made in the following form: Ontario Geological Survey 2020. Index to maps, bedrock geology 1991-2019, southern sheet, Ontario Geological Survey, Index Maps, scale 1:1 000 000.

Ontario Geological Survey 2020. Index to maps, bedrock geology 1991-2019, southern sheet, Ontario Geological Survey, Index Maps, scale 1:1 000 000.

Users of OGS products should be aware that Indigenous communities may have Aboriginal or treaty rights or other interests that overlap with areas of mineral potential and exploration.