

ABBREVIATIONS

Table of abbreviations for map symbols and features, including AC (Map compiled upon an aeromagnetic base), AM (Map compiled upon an aeromagnetic base), and various geological and topographic symbols.

P Series

Table listing P Series maps with columns for Map No., Scale, Year, Description, Related Publication(s), and Notes.

OFM Series

Table listing OFM Series maps with columns for Map No., Scale, Year, Description, Related Publication(s), and Notes.

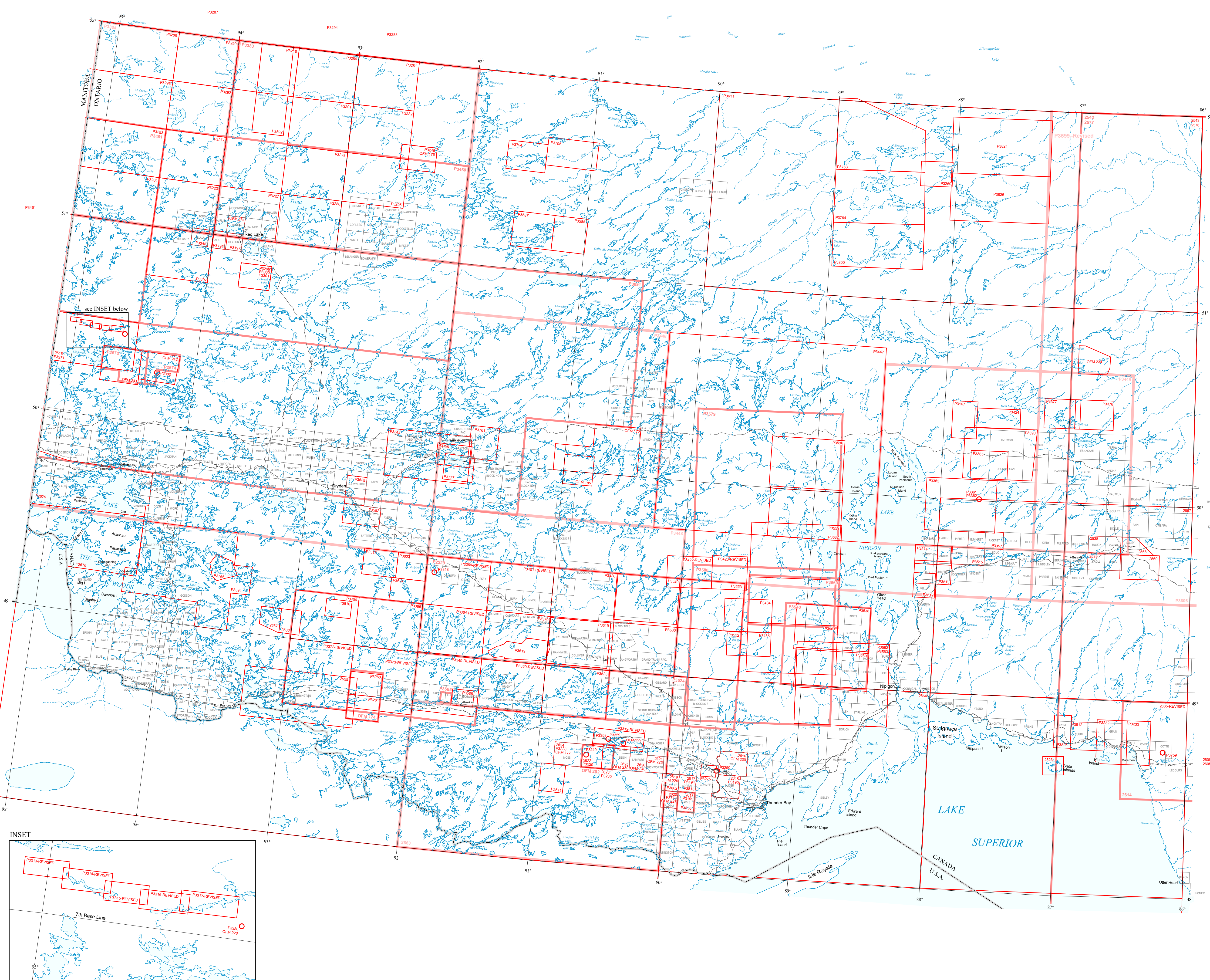
2000 Series

Table listing 2000 Series maps with columns for Map No., Scale, Year, Description, Related Publication(s), and Notes.

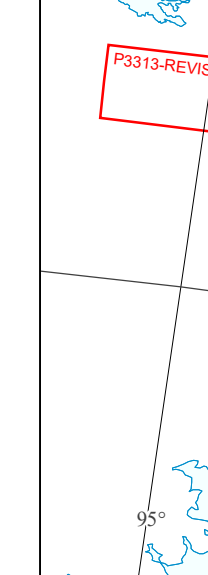
P Series

Table listing P Series maps with columns for Map No., Scale, Year, Description, Related Publication(s), and Notes.

Main table listing geological maps with columns for Map No., Scale, Year, Description, Related Publication(s), and Notes.



INSET



WHAT THIS INDEX PROVIDES

This index shows all maps published by the Ontario Geological Survey between 1991 and 2020 that pertain to bedrock geology and related metallic and industrial mineral resources.

Maps on this index cover the following topics: BEDROCK GEOLOGY, MINERAL DEPOSITS (including aggregates), MISCELLANEOUS (including geochronology, bedrock geomorphology, and Quaternary geology).

The maps indexed here have been produced by the Ontario Geological Survey, and comprise the following series: OFM Series, P Series, and 2000 Series.

FOR MORE INFORMATION ABOUT PUBLISHED MAPS: The Index to Published Reports and Maps, 1991 to 1992; The Index to Published Reports, Maps and Digital Data, 1993 to 2010; and the most current update Miscellaneous Paper 177.

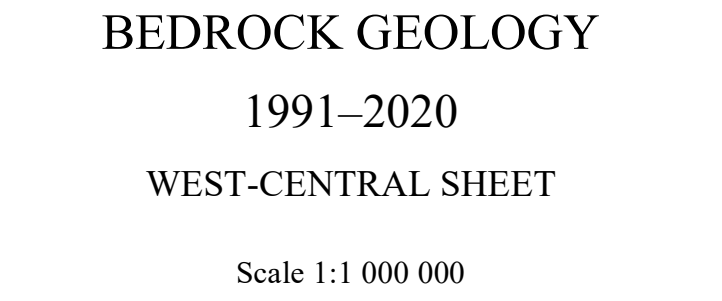
GeologyOntario, at https://www.geologyontario.mrdn.gov.on.ca, is the Mines and Minerals Division online data warehouse that allows users to query geospatial data through spatial and/or attribute search functions.

HOW TO OBTAIN MAPS

Published Maps: Digital versions of maps and reports are available for downloading free of charge from GeologyOntario. In cases where the file size is prohibitive...

By Phone, Fax, or E-Mail: Mail, fax, e-mail and telephone orders should be directed to Publication Sales, Sudbury.

New Maps: You can learn of new maps and reports released by the Ontario Geological Survey through our Publications Release Notice, which is available in English and French...



Scale 1:1 000 000. Location Map. 1 cm equals 250 km.

SYMBOLS: Outline of map area, Position of map areas too small to outline, International boundary, Interprovincial boundary, Township boundary, Railway, Main highway, Drive highway.

SOURCES AND CREDITS

The outline of each map represents the area of survey coverage. The outlines were determined from the geographic co-ordinates (latitude, longitude) printed on the maps.

To expedite publication, a limited editorial review has been performed. Discrepancies may occur which the Ontario Ministry of Energy, Northern Development and Mines does not assume liability for.

Parts of this publication may be quoted if credit is given. It is recommended that reference to this publication be made in the following form: Ontario Geological Survey, 2021. Index to maps, bedrock geology 1991-2020, west-central sheet, Ontario Geological Survey, Index Maps, scale 1:1 000 000.

Index map compilation and editing by Publication Services Unit, Ontario Geological Survey.

Map outlines compilation by J. Rose. Cartographic production by J. Rose.

Publication Sales: Ministry of Energy, Northern Development and Mines, 933 Ramsey Lake Road, Level A3, Sudbury, ON P3E 8B5.

Regional Mines and Minerals offices responsible for the area covered by the publication.

Regional Mines and Minerals offices responsible for the area covered by the publication.

Regional Mines and Minerals offices responsible for the area covered by the publication.

Regional Mines and Minerals offices responsible for the area covered by the publication.

Regional Mines and Minerals offices responsible for the area covered by the publication.

Regional Mines and Minerals offices responsible for the area covered by the publication.

Users of OGS products should be aware that Indigenous communities may have Aboriginal or treaty rights or other interests that overlap with areas of mineral potential and exploration.