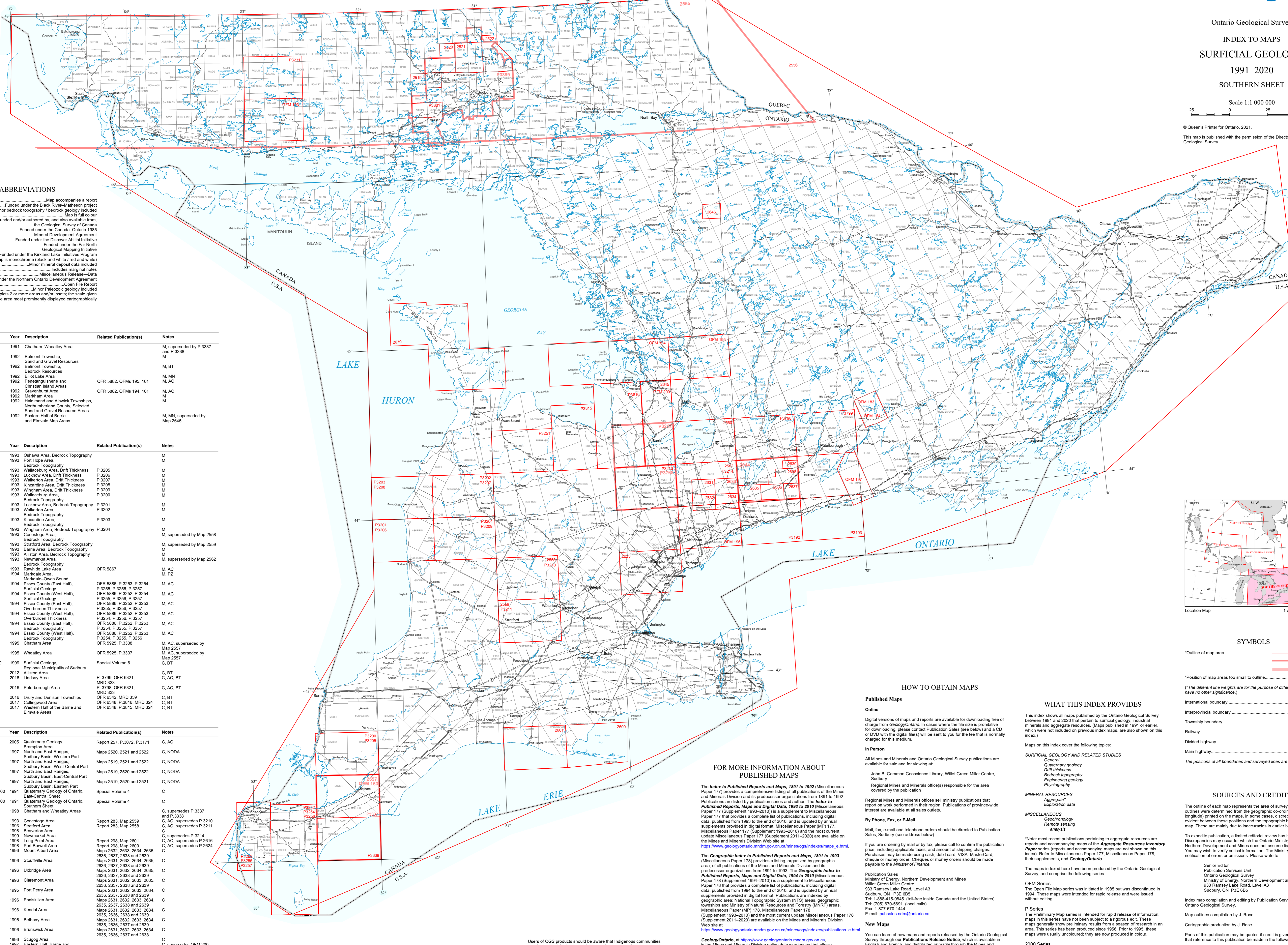


Ontario Geological Survey
INDEX TO MAPS
SURFICIAL GEOLOGY
1991-2020
SOUTHERN SHEET

Scale 1:1 000 000



© Queen's Printer for Ontario, 2021.
This map is published with the permission of the Director, Ontario Geological Survey.



ABBREVIATIONS

AC.....Map accompanies a report
BRM.....Funded under the Black River-Matheson project
BT.....Minor bedrock topography / bedrock geology included
C.....Map is full colour
CN.....Funded and/or authored by, and also available from, the Geological Survey of Canada
COMDA.....Funded under the Canada-Ontario 1985
DAI.....Mineral Development Agreement
FNGMI.....Funded under the Far North Geological Mapping Initiative
KLIP.....Funded under the Kirkland Lake Initiatives Program
M.....Map is monochrome (black and white / red and white)
MD.....Minor mineral deposit data included
MN.....Includes marginal notes
MRD.....Miscellaneous Releases-Data
NODA.....Funded under the Northern Ontario Development Agreement
OFR.....Open File Report
PZ.....Minor Paleozoic geology included
TA.....Map depicts 2 or more areas and/or insets; the scale given is that of the area most prominently displayed cartographically

OFM Series

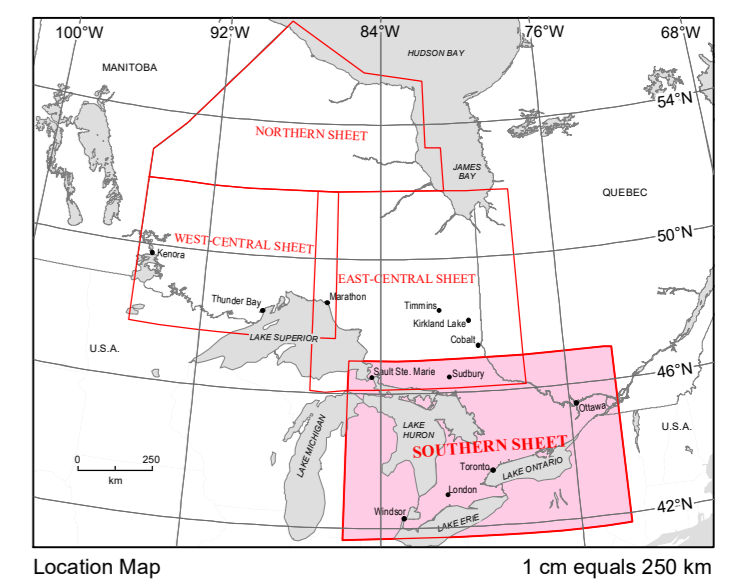
Table with columns: Map No., Scale, Year, Description, Related Publication(s), Notes. Lists OFM series 163 through 200.

P Series

Table with columns: Map No., Scale, Year, Description, Related Publication(s), Notes. Lists P series 192 through 3338.

2000 Series

Table with columns: Map No., Scale, Year, Description, Related Publication(s), Notes. Lists 2000 series 2223 through 2679.



SYMBOLS

- Outline of map area. 2660, 2644, 2644, 2640
Position of map areas too small to outline. 2660

HOW TO OBTAIN MAPS

Published Maps
Online
Digital versions of maps and reports are available for downloading free of charge from GeoOntario.
By Phone, Fax, or E-Mail
Mail, fax, e-mail and telephone orders should be directed to Publication Sales, Sudbury (see address below).

WHAT THIS INDEX PROVIDES

This index shows all maps published by the Ontario Geological Survey between 1991 and 2020 that pertain to surficial geology, industrial minerals and aggregate resources.
Maps on this index cover the following topics:
SURFICIAL GEOLOGY AND RELATED STUDIES
MINERAL RESOURCES
MISCELLANEOUS

FOR MORE INFORMATION ABOUT PUBLISHED MAPS

The Index to Published Reports and Maps, 1891 to 1992 (Miscellaneous Paper 177) provides a comprehensive listing of all publications of the Mines and Minerals Division and its predecessor organizations from 1891 to 1992.
The Geographic Index to Published Reports and Maps, 1891 to 1993 (Miscellaneous Paper 178) provides a listing, organized by geographic area, of all publications of the Mines and Minerals Division and its predecessor organizations from 1891 to 1993.

Users of OGS products should be aware that Indigenous communities may have Aboriginal or treaty rights or other interests that overlap with areas of mineral potential and exploration.