

WHAT THIS INDEX PROVIDES

This index shows all maps published by the Ontario Geological Survey between 1991 and 2020 that pertain to surficial geology, industrial minerals and aggregate resources. (Maps published in 1991 or earlier, which were not included on previous index maps, are also shown on this index.)

Maps on this index cover the following topics:

- SURFICIAL GEOLOGY AND RELATED STUDIES
General
Quaternary geology
Cliff thickness
Bedrock topography
Engineering geology
Physiography

- MINERAL RESOURCES
Aggregate
Exploration data

- MISCELLANEOUS
Geochronology
Remote sensing analysis

*Note: most recent publications pertaining to aggregate resources are reports and accompanying maps of the Aggregate Resources Inventory Paper series (reports and accompanying maps are not shown on this index. Refer to Miscellaneous Paper 177, Miscellaneous Paper 178, their supplements, and GeologyOntario.

The maps indexed here have been produced by the Ontario Geological Survey, and comprise the following series:

OFM Series
The Open File Map series was initiated in 1985 but was discontinued in 1994. These maps were intended for rapid release and were issued without editing.

P Series
The Preliminary Map series is intended for rapid release of information; maps in this series have not been subject to a rigorous edit. These maps generally show preliminary results from a season of research in an area. This series has been produced since 1965. Prior to 1995, these maps were usually uncoloured; they are now produced in colour.

2000 Series
This series of coloured maps has been produced since 1961 and presents the final results of geologic investigations of specific areas. Most accompany a final published report.

FOR MORE INFORMATION ABOUT PUBLISHED MAPS

The Index to Published Reports and Maps, 1891 to 1992 (Miscellaneous Paper 177) provides a comprehensive listing of all publications of the Mines and Minerals Division and its predecessor organizations from 1891 to 1992. Publications are listed by publication series and author. The Index to Published Reports, Maps and Digital Data, 1993 to 2010 (Miscellaneous Paper 177 (Supplement 1993-2010)) is a supplement to Miscellaneous Paper 177 that provides a complete list of publications, including digital data, published from 1993 to the end of 2010, and is updated by annual supplements provided in digital format. Miscellaneous Paper (MP) 177, Miscellaneous Paper 177 (Supplement 1993-2010) and the most current update Miscellaneous Paper 177 (Supplement 2011-2020) are available on the Mines and Minerals Division Web site at https://www.geologyontario.mdm.gov.ca/minesog/indexes/maps_e.html.

The Geographic Index to Published Reports and Maps, 1891 to 1993 (Miscellaneous Paper 178) provides a listing, organized by geographic area, of all publications of the Mines and Minerals Division and its predecessor organizations from 1891 to 1993. The Geographic Index to Published Reports, Maps and Digital Data, 1994 to 2010 (Miscellaneous Paper 178 (Supplement 1994-2010)) is a supplement to Miscellaneous Paper 178 that provides a complete list of publications, including digital data, published from 1994 to the end of 2010, and is updated by annual supplements provided in digital format. Publications are indexed by geographic area: National Topographic System (NTS) areas, geographic townships and Ministry of Natural Resources and Forestry (MNR) areas. Miscellaneous Paper (MP) 178, Miscellaneous Paper 178 (Supplement 1993-2010) and the most current update Miscellaneous Paper 178 (Supplement 2011-2020) are available on the Mines and Minerals Division Web site at https://www.geologyontario.mdm.gov.ca/minesog/indexes/publications_e.html.

GeologyOntario, at https://www.geologyontario.mdm.gov.ca, is the Mines and Minerals Division online data warehouse that allows users to query geoscience data through spatial and/or attribute search functions and provides free downloads of Ontario Geological Survey geoscience publications.

Table with 5 columns: Map No., Scale, Year, Description, Related Publication(s), Notes. Lists maps from 1993 to 2013, including Uimreville Lake Area, Lennan Lake Area, and various satellite image maps.

Table with 5 columns: Map No., Scale, Year, Description, Related Publication(s), Notes. Lists maps from 1991 to 2009, including Beardmore-Geraldton Area, Lennan Lake Area, and various geological studies.

HOW TO OBTAIN MAPS

Published Maps

Online

Digital versions of maps and reports are available for downloading free of charge from GeologyOntario. In cases where the file size is prohibitive for downloading, please contact Publication Sales (see below) and a CD or DVD with the digital file(s) will be sent to you for the fee that is normally charged for this medium.

In Person

All Mines and Minerals and Ontario Geological Survey publications are available for sale and for viewing at:

John B. Gammon Geoscience Library, Willet Green Miller Centre, Sudbury
Regional Mines and Minerals office(s) responsible for the area covered by the publication

Regional Mines and Minerals offices sell ministry publications that report on work performed in their region. Publications of province-wide interest are available at all sales outlets.

By Phone, Fax, or E-Mail

Mail, fax, e-mail and telephone orders should be directed to Publication Sales, Sudbury (see address below).

If you are ordering by mail or by fax, please call to confirm the publication price, including applicable taxes, and amount of shipping charges. Purchases may be made using cash, debit card, VISA, MasterCard, cheque or money order. Cheques or money orders should be made payable to the Minister of Finance.

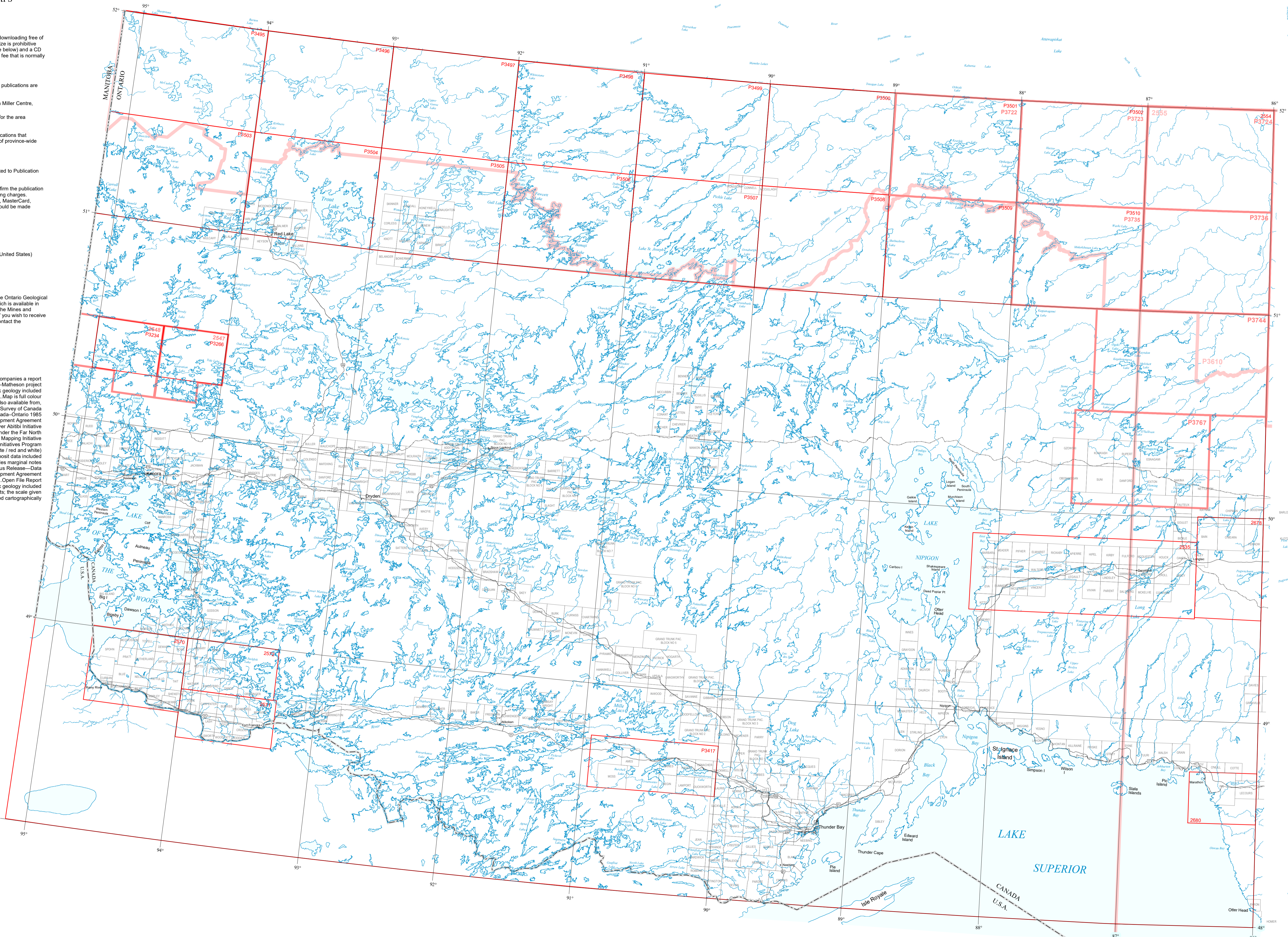
Publication Sales
Ministry of Energy, Northern Development and Mines
Willet Green Miller Centre
933 Ramsey Lake Road, Level A3
Sudbury, ON P3E 6B5
Tel: 1-888-415-8845 (toll-free inside Canada and the United States)
Tel: (705) 670-5991 (local calls)
Fax: 1-877-670-1444
E-mail: pubsales.ndm@ontario.ca

New Maps

You can learn of new maps and reports released by the Ontario Geological Survey through our Publications Release Notice, which is available in English and French, and distributed primarily through the Mines and Minerals Division Web site at https://ontario.ca/index. If you wish to receive notification of publication releases by e-mail, please contact the Publication Sales office.

ABBREVIATIONS

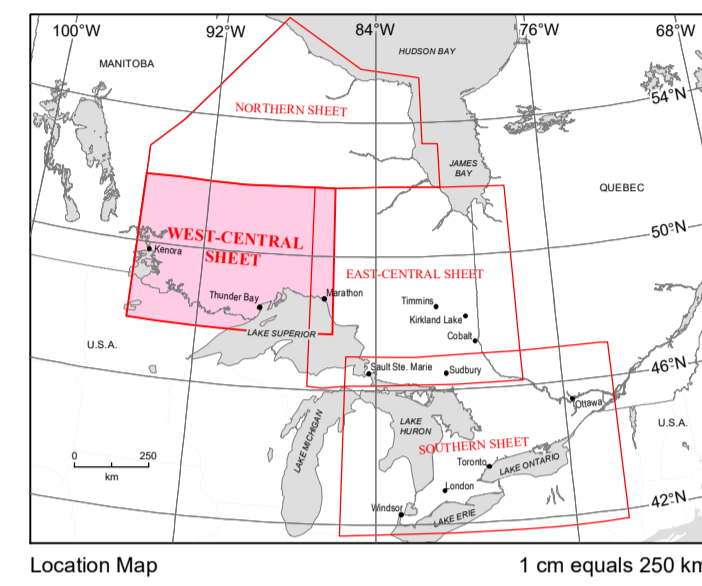
- AC.....Map accompanies a report
BRM.....Funded under the Black River-Matheson project
BT.....Minor bedrock topography / bedrock geology included
C.....Map in full colour
CN.....Funded and/or authored by, and also available from, the Geological Survey of Canada
COMDA.....Funded under the Canada-Ontario 1985 Mineral Development Agreement
DAL.....Funded under the Discover Albita Initiative
FNGMI.....Funded under the Far North Geological Mapping Initiative
KLP.....Funded under the Kirkland Lake Initiatives Program
M.....Map is monochrome (black and white / red and white)
MD.....Minor mineral deposit data included
MN.....Includes marginal notes
MRD.....Miscellaneous Release - Data
NODA.....Funded under the Northern Ontario Development Agreement
OFR.....Open File Report
PZ.....Minor Paleozoic geology included
TA.....Map depicts 2 or more areas and/or insets; the scale given is that of the area most prominently displayed cartographically



Ontario Geological Survey
INDEX TO MAPS
SURFICIAL GEOLOGY
1991-2020
WEST-CENTRAL SHEET

Scale 1:1 000 000
25 0 25 50 km

© Queen's Printer for Ontario, 2021.
This map is published with the permission of the Director, Ontario Geological Survey.



SYMBOLS

- *Outline of map area..... 2500
2644
2644
2644
*Position of map areas too small to outline..... 2500
(*The different line weights are for the purpose of differentiation only and have no other significance)
International boundary.....
Interprovincial boundary.....
Township boundary.....
Railway.....
Divided highway.....
Main highway.....
The positions of all boundaries and surveyed lines are approximate.

SOURCES AND CREDITS

The outline of each map represents the area of survey coverage. The outlines were determined from the geographic co-ordinates (latitude, longitude) printed on the maps. In some cases, discrepancies are evident between these positions and the topographic base for the index map. These are mainly due to inaccuracies in earlier base maps.

To expedite publication, a limited editorial review has been performed. Discrepancies may occur for which the Ontario Ministry of Energy, Northern Development and Mines does not assume liability. You may wish to verify critical information. The Ministry would appreciate notification of errors or omissions. Please write to:

Senior Editor
Publication Services Unit
Ontario Geological Survey
Ministry of Energy, Northern Development and Mines
933 Ramsey Lake Road, Level A3
Sudbury, ON P3E 6B5

Index map compilation and editing by Publication Services Unit, Ontario Geological Survey.

Map outline compilation by J. Rose.

Cartographic production by J. Rose.

Parts of this publication may be quoted if credit is given. It is recommended that reference to this publication be made in the following form:

Ontario Geological Survey 2021. Index to maps, surficial geology, 1991-2020, west-central sheet, Ontario Geological Survey, Index Maps, scale 1:1 000 000.

Users of OGS products should be aware that Indigenous communities may have Aboriginal or treaty rights or other interests that overlap with areas of mineral potential and exploration.