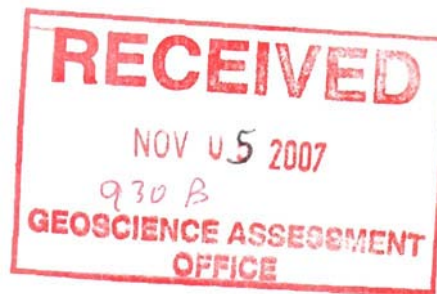


REPORT
of the
2007 Geological Mapping
on the
NORTH GRID
SERPENTINE LAKE PROPERTY
PORCUPINE MINING DIVISION,
NORTHEASTERN ONTARIO
of
SEDEX MINING CORPORATION

2.36236



UTM Nad 83 480800E & 5310500N
November 1, 2007

J Kevin Montgomery, P. Geo.

SUMMARY

The Serpentine Lake Property, held by SEDEX Mining Corp., is situated 55 km south of Timmins, Ontario. It is comprised of 27 unpatented contiguous mining claims (3,978 hectares) in Semple and Sothman Townships.

In July 2007, 498 MMI soil samples were collected from the north grid on claim 1191895. The MMI soil sample assay results were quite encouraging with some interesting silver, gold, copper, lead and zinc anomalous areas identified on the grid. The next phase of exploration consisted of geological mapping the grid (approx. 13 line km). This was carried out from October 24 to 28, 2007.

The geological mapping determined that the arcuate magnetic high anomaly outlined by the ground magnetic survey is a magnetic peridotite intrusive body or massive flows. It was also successful in locating several old diamond drill hole collars and set ups.

A compilation of the geological mapping with the MMI soil assay results, the ground induced polarization survey and the ground magnetic surveys, is recommended in order to generate diamond drilling targets.

Expenditures for the geological mapping on the north grid of the Serpentine Lake Property totalled \$ 2,946.

TABLE OF CONTENTS

	Page No.
Introduction	1
Location and Access	1
Property Description	4
Regional and Property Geology	6
North Grid Geology	6
Conclusions and Recommendations	10
References	11
Certificate of Qualifications	12

FIGURES

Figure 1	Location Map	2
Figure 2	Property Location Map	3
Figure 3	Claim and Grid Map	5
Figure 4	Regional Geology Map	7

APPENDICES

APPENDIX A Certificate of Expenditures

MAP (in back pocket)

MAP 1 Geology Map of North Grid, Serpentine Lake Property.

INTRODUCTION

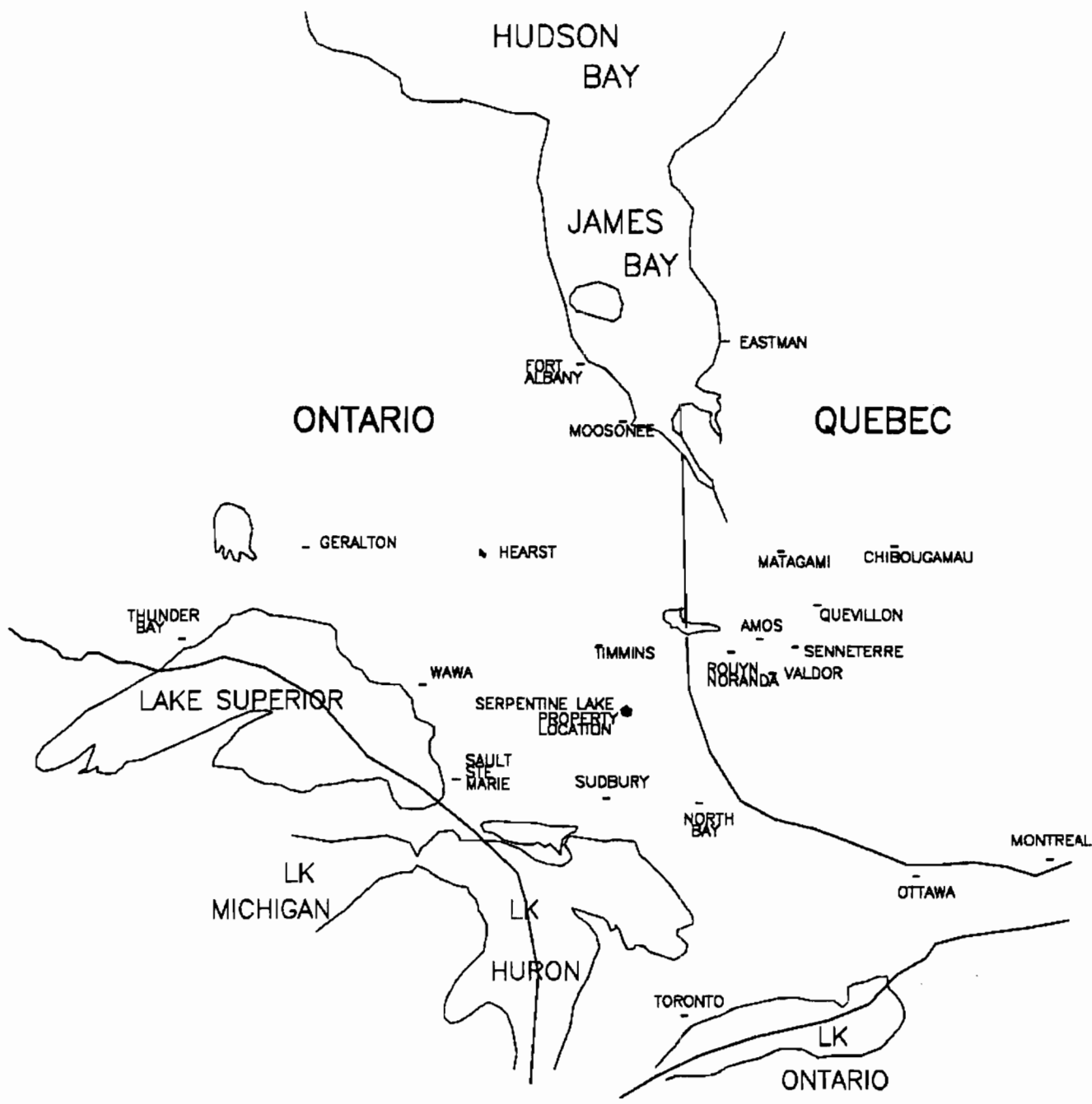
This report describes the 2007 geological mapping on the north grid of the Serpentine Lake Property. The program was carried out from October 24 to November 1 2007, to investigate the possibility of nickel, gold or base metal mineralization occurring on the grid. The geological mapping was conducted by Doug Bryant and Kevin Montgomery for SEDEX Mining Corporation. Kevin Montgomery mapped the rock exposures on October 26, 2007 and Doug Bryant mapped the overburden covered areas on October 24 to 28, 2007. Drafting of the geological map and preparation of the report was conducted from October 29 to November 1, 2007.

LOCATION AND ACCESS

The property is situated in south central Semple Township and north central Sothman Township, Porcupine Mining Division, Northeastern Ontario. The property is approximately 60 km south of the city of Timmins and 47 km west of the town of Matachewan (Figure 1).

The property is easily accessed by motor vehicle from Timmins via the southern extension of Pine Street South. This major gravel logging road cuts north-south through the property and numerous bush roads/trails (4x4 vehicle and all terrain vehicle) trend off it giving good access to the majority of the property (Figure 2).

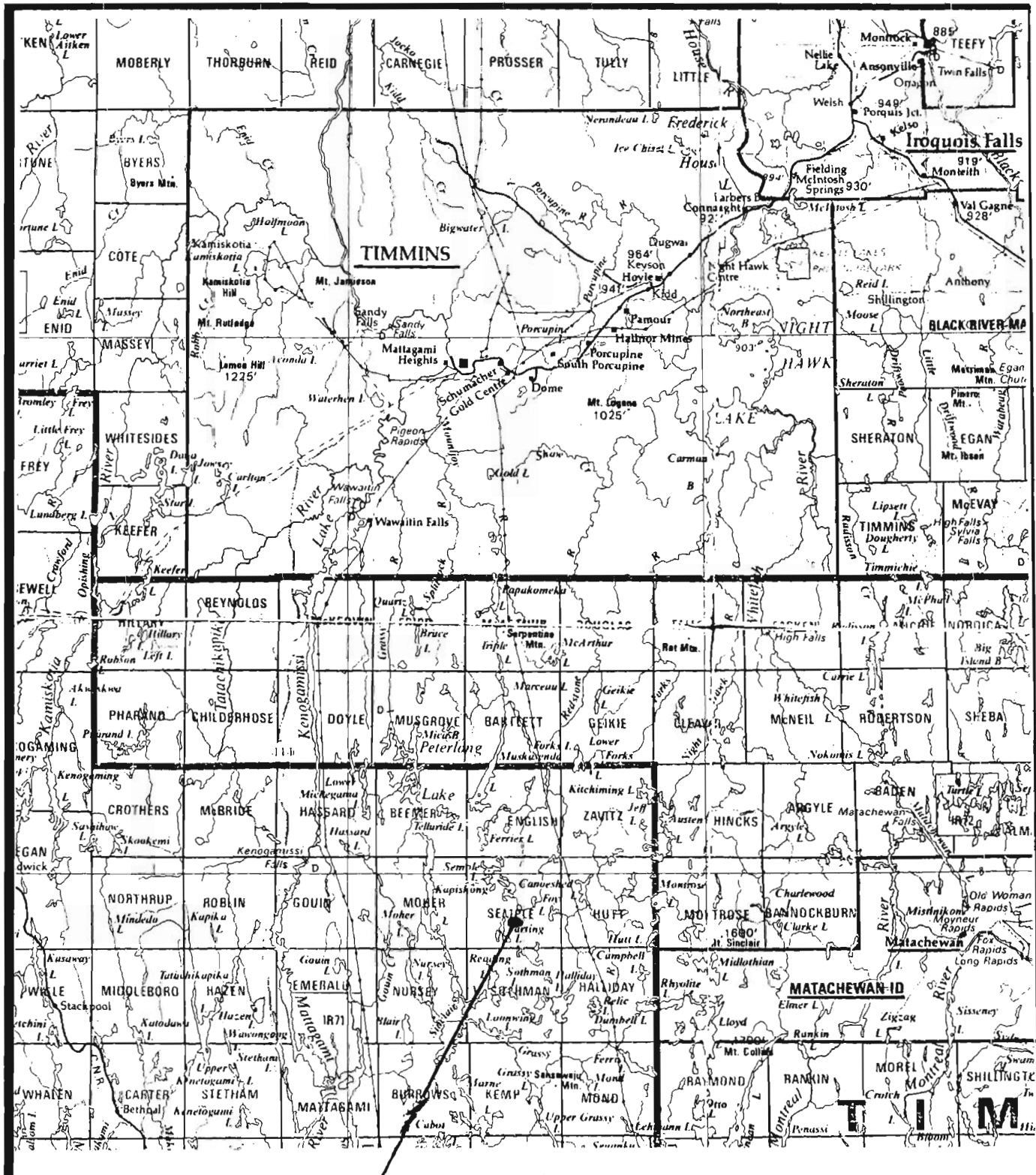
The north grid is located around Serpentine Lake and Bears Nest Lake in south central Semple Township. It is accessible by a series of gravel roads trending east off the main logging road that eventually swing northwest to within 600 m of the grid. The south eastern portion of the grid is then accessible by ATV (Figure 3).




EXSICS EXPLORATION LTD.
 P.O. Box 1880, P4N-7X1
 Suite 13, Hollinger Bldg. Timmins Ont.
 Telephone: 705-267-4151, 267-2424

CLIENT:	SEDEX MINING CORP.
PROPERTY:	SERPENTINE LAKE PROPERTY
TITLE:	SEMPLE TOWNSHIP
LOCATION MAP	
Fig. 1	
Date: May/07	Scale: 1" = 12.5 miles NTS:
Drawn: J.C. Grant	Interp: J.C. Grant Job No.: E-546





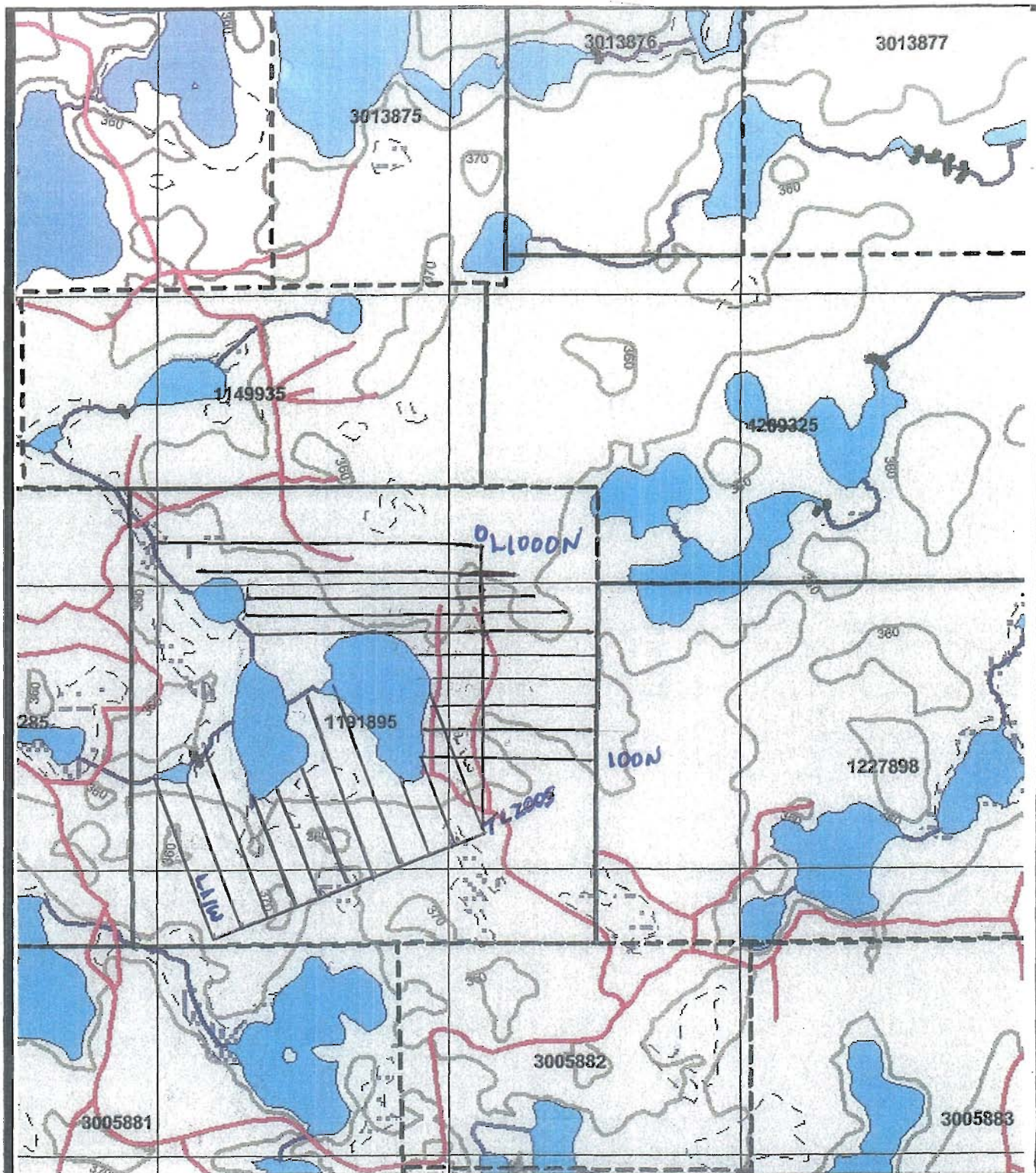
 EXSICS EXPLORATION LTD. P.O. Box 1880, P4N-7X1 Suite 13, Hollinger Bldg. Timmins Ont. Telephone: 705-287-4151, 287-2424		
CLIENT: SEDEX MINING CORP.		
PROPERTY: SERPENTINE LAKE PROPERTY		
TITLE: SEMPLE TOWNSHIP		
PROPERTY LOCATION MAP		
Fig. 2		
Date: May/07	Scale: 1: 600,000	NTS:
Drawn: J.C. Grant	Interp: J.C. Grant	Job No.: E-546

PROPERTY DESCRIPTION

The Serpentine Lake Property is comprised of 27 contiguous unpatented mining claims (246 claim units) in Semple and Sothman Townships. It is approximately 3,978 hectares in size. The claims are held jointly by Mr. Doug Bryant, Mr. Jim Croxall and Ms. Margaret Kangas. They are under option to Sedex Mining Corporation.

Table 1 Serpentine Lake Property Claims

Twp.	Claim Number	Recording Date	Claim Units	Claim Size
SEMPL	<u>1149935</u>	2003-Jul-09	8	129.36
SEMPL	<u>1191895</u>	2002-Feb-18	16	258.72
SEMPL	<u>1227898</u>	2005-May-31	15	242.55
SEMPL	<u>30001053</u>	2003-Feb-18	9	145.53
SEMPL	<u>3005881</u>	2004-Mar-04	15	242.55
SEMPL	<u>3005882</u>	2004-Mar-04	6	97.02
SEMPL	<u>3005883</u>	2004-Mar-04	12	194.04
SEMPL	<u>3013875</u>	2004-Mar-04	6	97.02
SEMPL	<u>3013876</u>	2004-Mar-04	8	129.36
SEMPL	<u>3013877</u>	2004-Mar-04	12	194.04
SEMPL	<u>4203285</u>	2005-Jul-04	8	129.36
SOTHMAN	<u>1149934</u>	2003-May-30	9	145.53
SOTHMAN	<u>1149936</u>	2003-May-20	4	64.68
SOTHMAN	<u>1149937</u>	2003-May-07	16	258.72
SOTHMAN	<u>1149938</u>	2003-May-07	10	161.70
SOTHMAN	<u>1149939</u>	2003-May-20	12	194.04
SOTHMAN	<u>1247541</u>	2003-Apr-15	9	145.53
SOTHMAN	<u>1247542</u>	2003-Apr-15	8	129.36
SOTHMAN	<u>1247543</u>	2003-Apr-15	2	32.34
SOTHMAN	<u>30001054</u>	2003-Feb-18	8	129.36
SOTHMAN	<u>3005884</u>	2004-Mar-04	16	258.72
SOTHMAN	<u>3005885</u>	2004-Mar-04	6	97.02
SOTHMAN	<u>3005886</u>	2004-Mar-04	3	48.51
SOTHMAN	<u>3005887</u>	2004-Mar-04	11	177.87
SOTHMAN	<u>3005888</u>	2004-Mar-04	1	16.17
SOTHMAN	<u>3016396</u>	2003-Jul-03	8	129.36
SOTHMAN	<u>3016397</u>	2003-Jul-03	8	129.36



EXSICS EXPLORATION LTD.

P.O. Box 1880, P4N-7X1
 Suite 13, Hollinger Bldg. Timmins Ont.
 Telephone: 705-267-4151, 267-2424

CLIENT: SEDEX MINING CORP.

PROPERTY: SERPENTINE LAKE PROPERTY

TITLE: SEMPLE TOWNSHIP

CLAIM MAP / GRID MAP

Fig. 3

Date: May/07

Scale: 1: 20,000

NTS:

Drawn: J.C. Grant

Interp: J.C. Grant

Job No.: E-546

REGIONAL and PROPERTY GEOLOGY

The property lies within the southwestern part of the Abitibi Greenstone Belt, in the Superior Province. It covers the western portion of the Halliday Dome (Figure 4). The Halliday Dome is comprised of calc-alkaline intermediate volcanics with local iron formation and sediments at the top. Komatiitic ultramafics and mafics overlie the calc-alkaline volcanics and are intruded by mafic to ultramafic sills.

The north part (Semple Twp.) of the property is underlain by massive to pillowed mafic to intermediate volcanic flows that have been intruded by small concordant gabbroic, peridotite and pyroxenite sills and flows. The south part (Sothman Twp.) is underlain by massive intermediate flows intruded by the same suite of ultramafics and mafics. There are two large arcuate ultramafic flows and or sill complexes located at Serpentine Lake and Little Reading Lake. These two have been interpreted as fold structures with east-west fold axis. In addition, several linear layered ultramafic-intermediate volcanic stratigraphic sequences appear to occur on the property. The stratigraphy appears to have been sliced up by three or more major northeast trending fault structures (Edleston Fault and Sinclair Fault).

The property is extensively overburden covered and has very limited outcrop exposure.

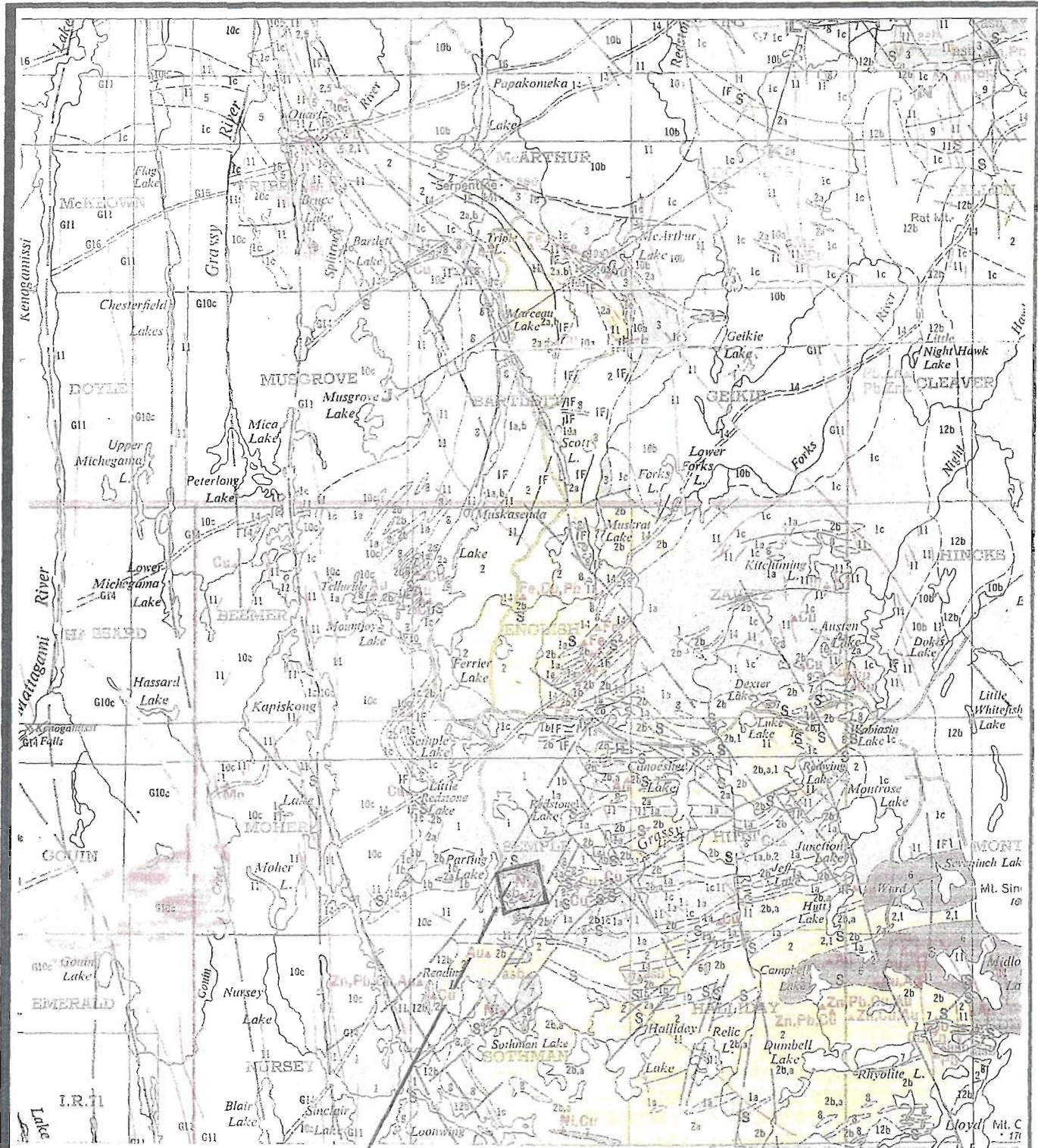
NORTH GRID GEOLOGY

The north grid is situated on claim 1191895, around Serpentine Lake and Bears Nest Lake in south central Semple Township. Geological mapping was initiated in order to investigate a large arcuate magnetic high anomaly outlined by the ground magnetic survey. It was also carried out in order to locate any old diamond drill hole collars or set-ups.

The north grid consists of 10 east-west lines (100N to 1000N) with a north-south baseline and 11 northwest trending lines (100W to 1100W) with a tie line 200S (see Map 1). The north grid has a total of 13 km of cut line.

The grid is predominantly overburden covered except for two bedrock exposures in the northwest area. The terrain is flat with rolling small ridges no more than 10 m high. Vegetation cover consists of birch groves with patches of muskeg swamp and cedar-black spruce swamp in the vicinity of the lakes. Forestry clear cutting has occurred recently on the east portion of the grid.

The two bedrock exposures (L1000N 975W & L800N 650W) consist of dark green to black, very fine grained to fine grained, magnetic, massive, soft, serpentinized peridotite. They are possibly an adcumulate flow or an intrusive. They appear to be part of the arcuate magnetic high anomaly.



EXSICS EXPLORATION LTD.
 P.O. Box 1880, P4N-7X1
 Suite 13, Hollinger Bldg, Timmins Ont.
 Telephone: 705-267-4151, 267-2424

CLIENT: SEDEX MINING CORP.

PROPERTY: SERPENTINE LAKE PROPERTY

TITLE: SEMPLE TOWNSHIP

LOCAL GEOLOGY MAP

Fig. 4

Date: May/07 Scale: 1:253,440 NTS:

Drawn: J.C. Grant Interp: J.C. Grant Job No.: E-546

CONCLUSION AND RECOMMENDATIONS

Geological mapping determined that the north grid is predominantly overburden covered. The mapping was therefore unsuccessful in locating significant sulphide mineralization. It however determined that the arcuate magnetic high anomaly outlined by the ground magnetic survey is a magnetic peridotite intrusive body or massive flows. It was also successful in locating several old diamond drill hole collars and set ups. This will be invaluable in correlating historical exploration data to the present ground geophysical surveys data.

The next recommended phase of exploration would be the compilation of the geological mapping with the MMI soil assay results, the ground induced polarization survey and the ground magnetic surveys. This compilation is necessary to generate potential diamond drilling targets.

The expenditures for the geological mapping on the north grid of the Serpentine Lake Property totalled \$2,946.

REFERENCES

Grant, J.C.

2007 Geophysical Report for SEDEX Mining Corp. on the Serpentine Lake Property Semple Township, Porcupine Mining Division, Northeastern Ontario.

Montgomery, J.K.

2007 Final Report of the 2007 MMI soil sampling program on the North Grid Serpentine Lake Property Porcupine Mining Division, Northeastern Ontario of SEDEX Mining Corporation.

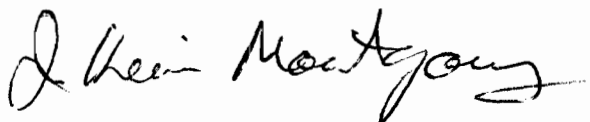
Ontario Geological Survey

Map 2205 Timmins-Kirkland Lake Geological Compilation Series.

CERTIFICATE OF QUALIFICATIONS

I, J. Kevin Montgomery, of the City of Timmins, Province of Ontario, do hereby certify that:

- (1) I am a professional Consulting Geologist, residing at 1190 Lozanne Crescent, Timmins Ontario, P4P 1E8.
- (2) I hold a B.Sc. Honours degree in Geological Sciences (1984) from Queen's University of Kingston, Ontario and a M.Sc.(App.) in Mineral Exploration (1987) from McGill University at Montreal, Quebec.
- (3) I am a registered professional geoscientist with the Association of Professional Geoscientists of Ontario. I am also a member of the Prospectors and Developers Association of Canada.
- (4) This report is based on my program supervision and geological mapping on the north grid on claim 1191895 of the Serpentine Lake Property in 2007.
- (5) I have no personal interest in the property covered by this report.
- (6) Permission is granted for the use of this report, in whole or in part, for assessment and qualification requirements but not for advertising purposes.



Dated at Timmins, Ontario
This first day of November, 2007.

J. Kevin Montgomery, P.Geo., M.Sc. (App..)



APPENDIX A CERTIFICATE OF EXPENDITURE

Sedex Mining Corporation
Serpentine Lake Property
Semple Twp. Ontario
North Grid Geological Mapping Program
October 24 to November 1, 2007

Senior Geologist (1 day)	\$ 583.00
Senior Geological Technician (4 days)	\$ 1,500.00
Daily transportation to the property and back (4 days x 150 km x \$0.40/km)	\$ 240.00
Report Writing & Map Drafting	\$ 623.00
TOTAL	\$ 2,946.00

Certified by:

J. Kevin Montgomery

Date:

Nov 1 / 2007

Note: This certificate has been constructed from the Detailed Cost Accounting Ledgers of Sedex Mining Corporation.