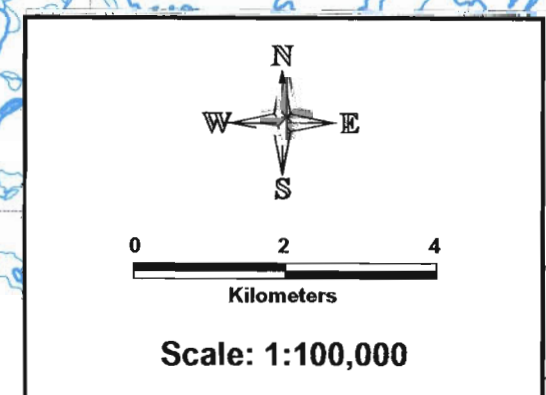
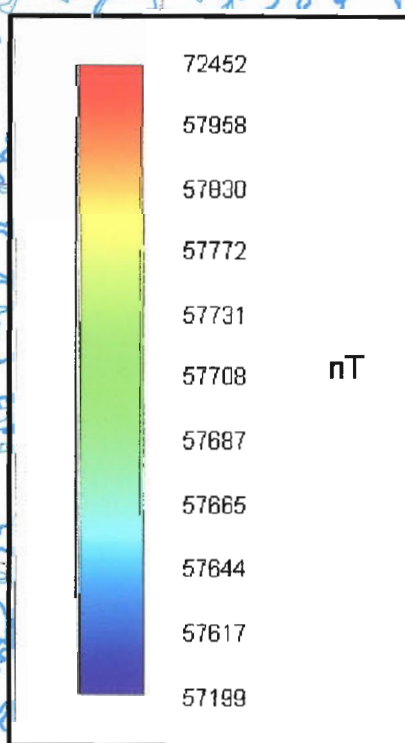
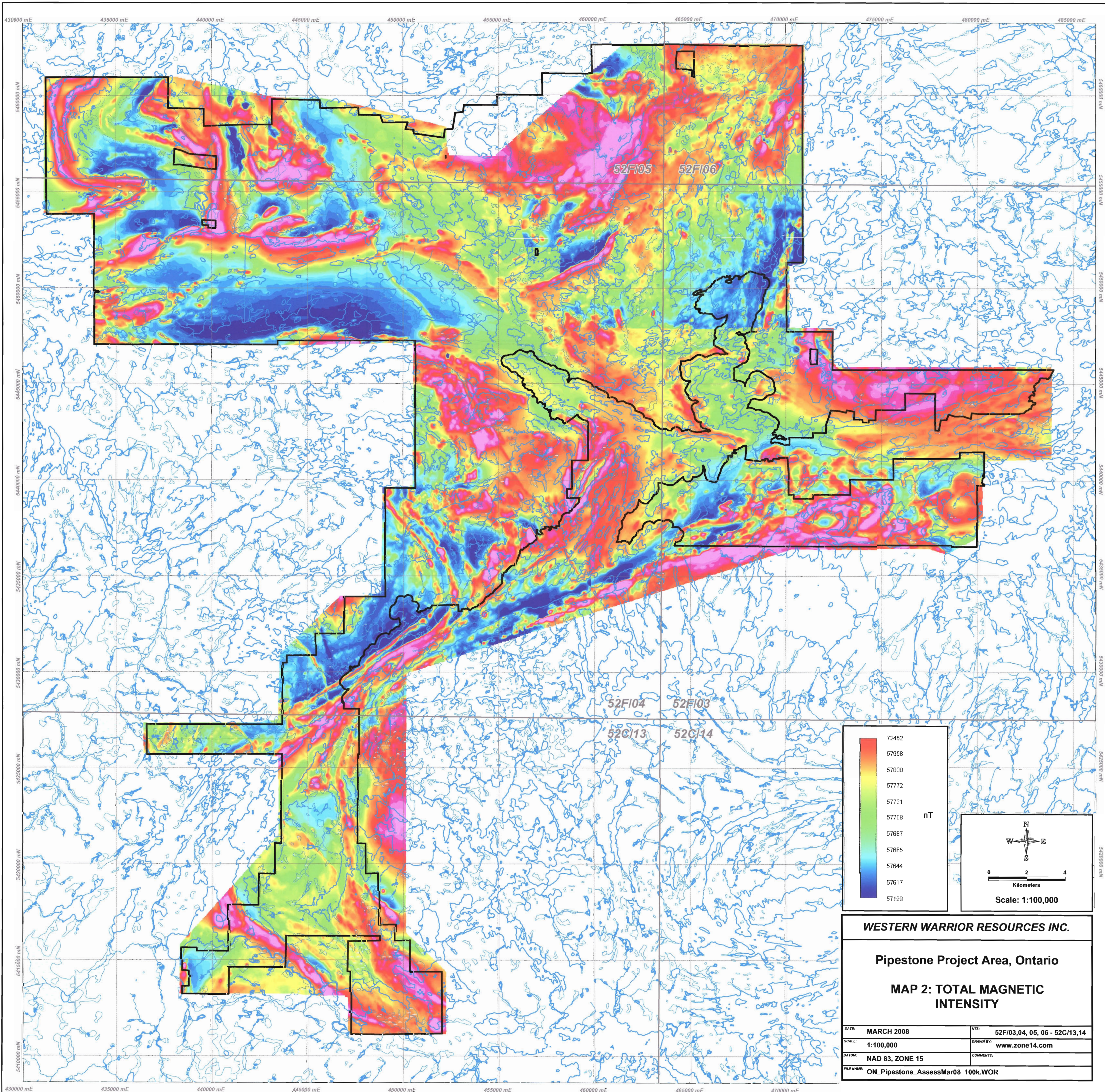


WESTERN WARRIOR RESOURCES INC.	
Pipestone Project Area, Ontario	
MAP 1: PROPERTY HOLDINGS	
DATE: MARCH 2008	NTS: 52F/03,04, 05, 06 - 52C/13,14
SCALE: 1:100,000	DRAWN BY: www.zone14.com
DATUM: NAD 83, ZONE 15	COMMENTS:
FILE NAME: ON_Pipestone_AssessMar08_100k.WOR	

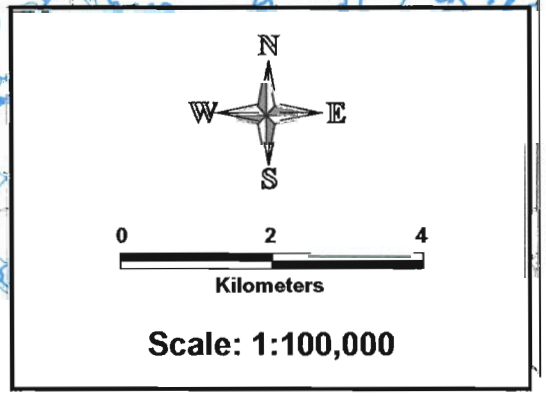
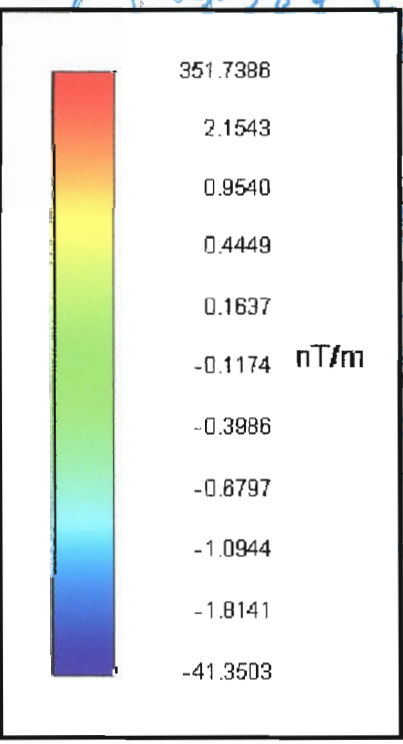
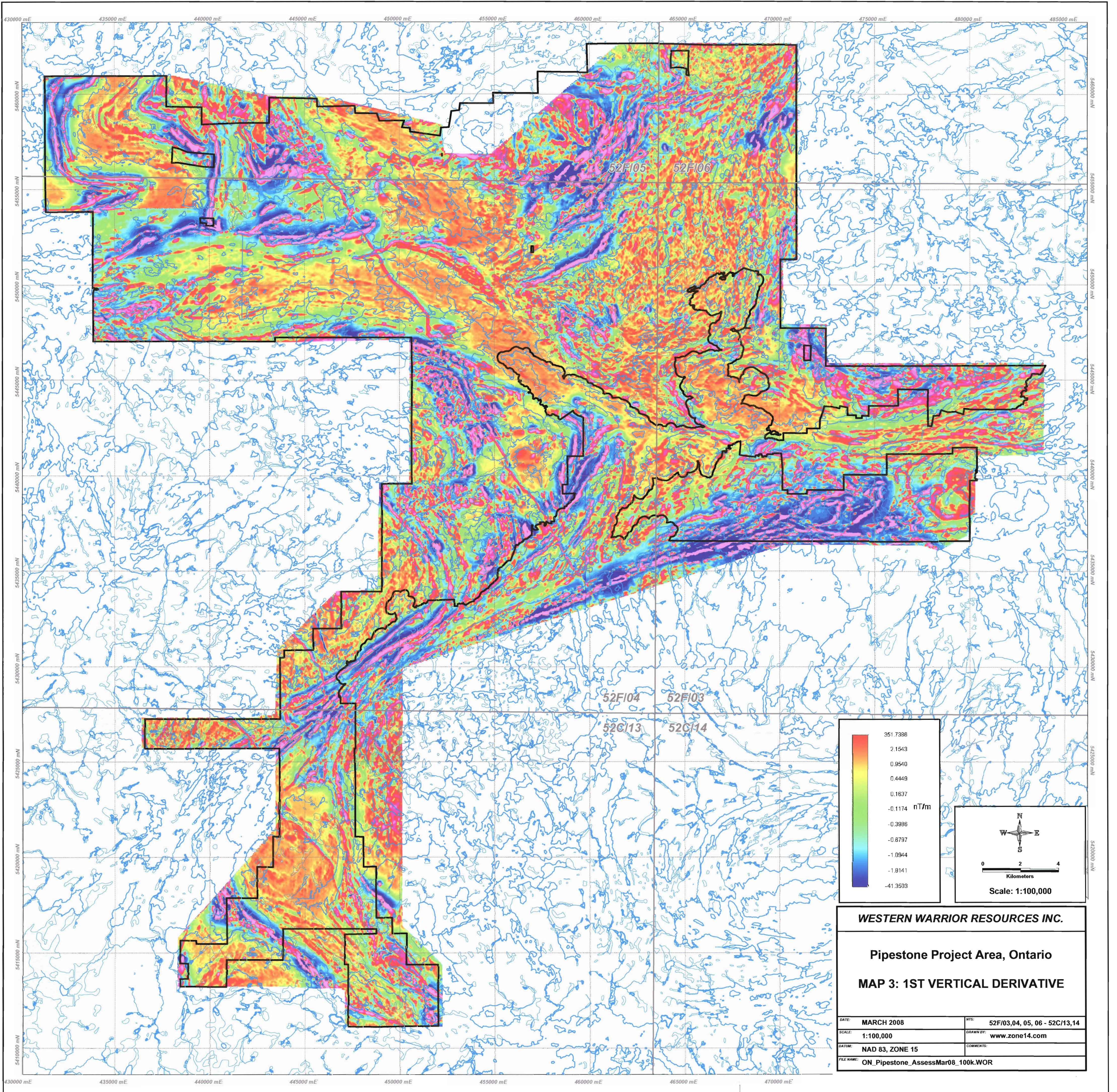


WESTERN WARRIOR RESOURCES INC.

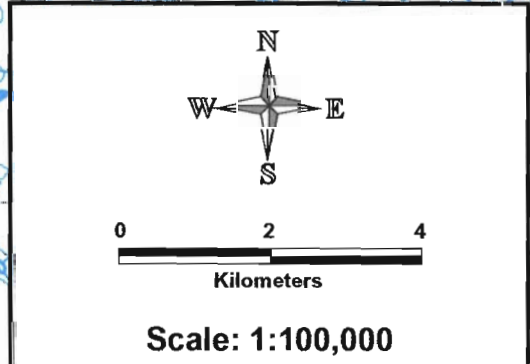
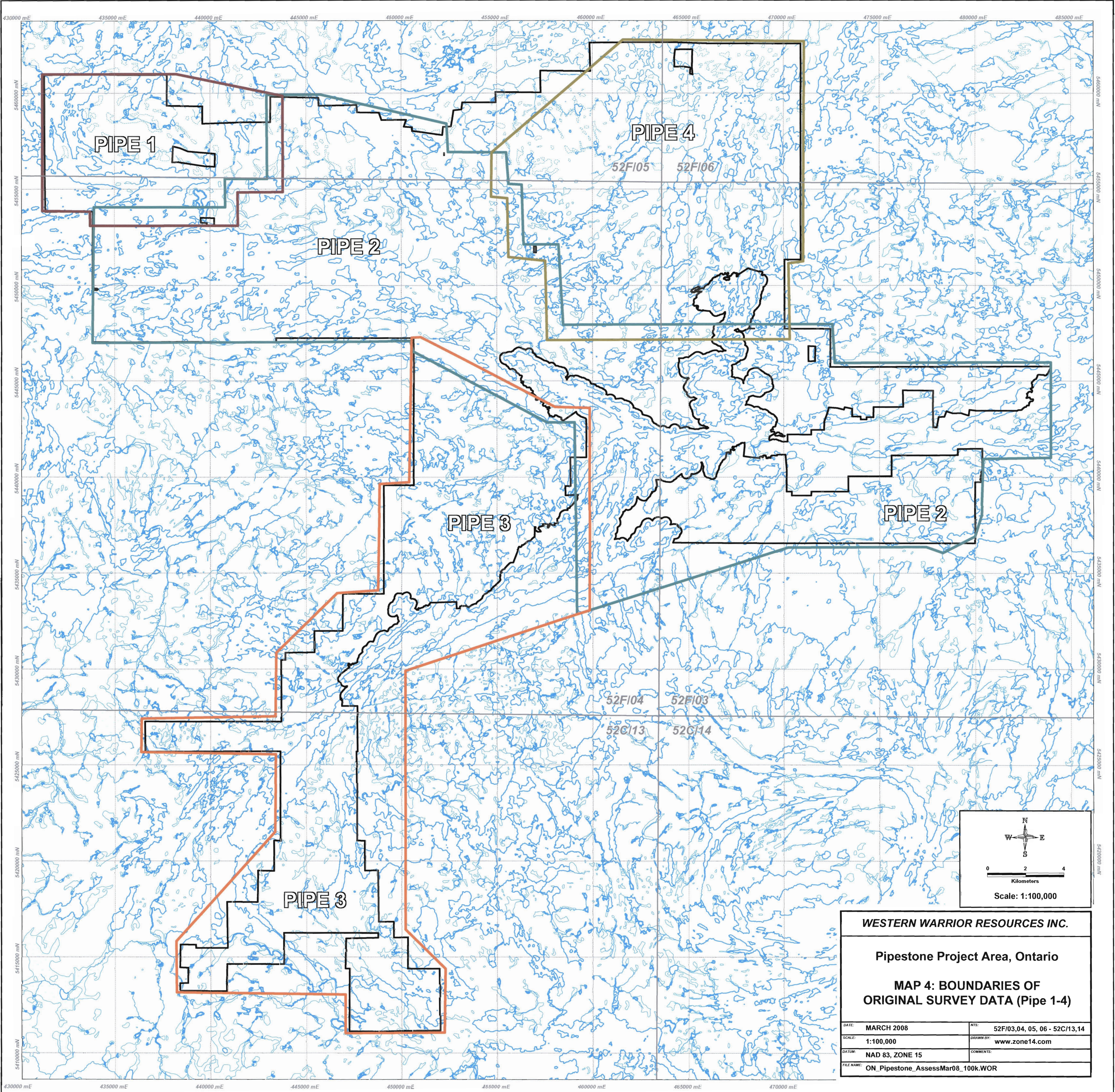
Pipestone Project Area, Ontario

MAP 2: TOTAL MAGNETIC INTENSITY

DATE:	MARCH 2008	NTS:	52F/03,04, 05, 06 - 52C/13,14
SCALE:	1:100,000	DRAWN BY:	www.zone14.com
DATUM:	NAD 83, ZONE 15	COMMENTS:	
FILE NAME:	ON_Pipestone_AssessMar08_100k.WOR		



WESTERN WARRIOR RESOURCES INC.	
Pipestone Project Area, Ontario	
MAP 3: 1ST VERTICAL DERIVATIVE	
DATE: MARCH 2008	MTB: 52F/03,04, 05, 06 - 52C/13,14
SCALE: 1:100,000	DRAWN BY: www.zone14.com
DATUM: NAD 83, ZONE 15	COMMENTS:
FILE NAME: ON_Pipestone_AssessMar08_100k.WOR	



WESTERN WARRIOR RESOURCES INC.	
Pipestone Project Area, Ontario	
MAP 4: BOUNDARIES OF ORIGINAL SURVEY DATA (Pipe 1-4)	
DATE: MARCH 2008	NTS: 52F/03,04, 05, 06 - 52C/13,14
SCALE: 1:100,000	DRAWN BY: www.zone14.com
DATUM: NAD 83, ZONE 15	COMMENTS:
FILE NAME: ON_Pipestone_AssessMar08_100k.WOR	