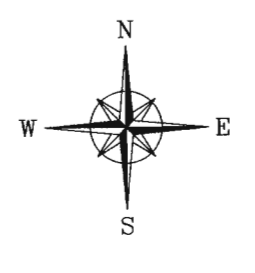
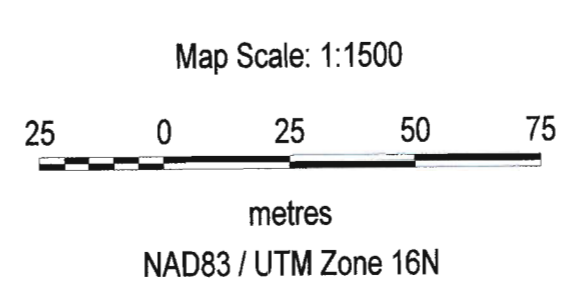
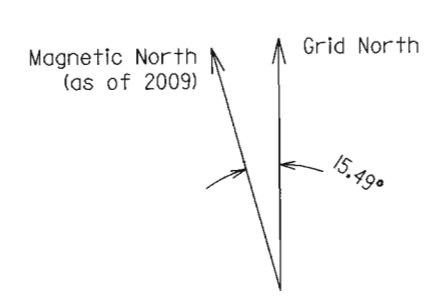


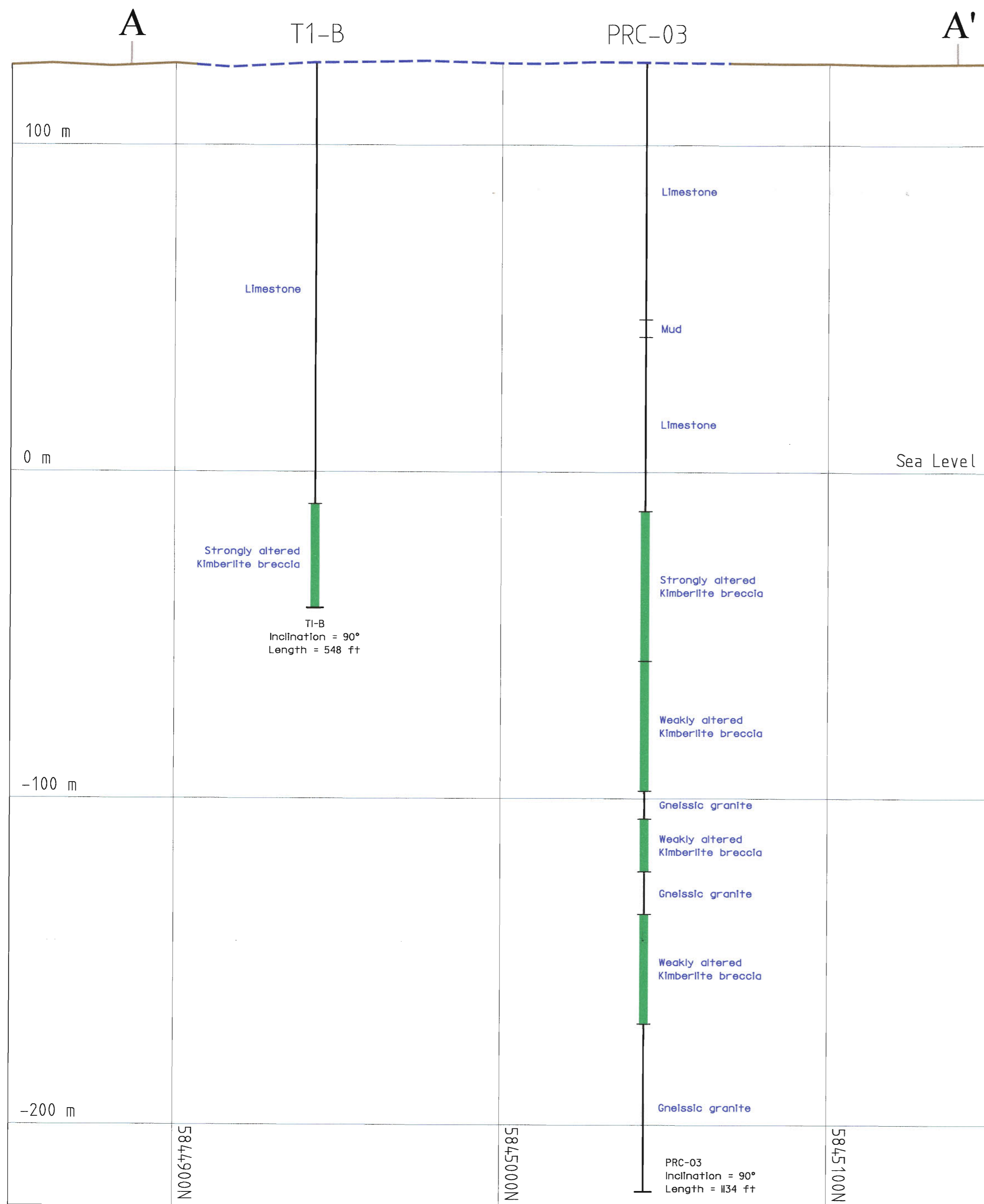
| | | |
|------------------------------|-----------------|--|
| Metalex Ventures Ltd | Division | Porcupine |
| | Township / Area | South of Missisa R. (G-3853) |
| | Claim Numbers | 301570, 4218915, 4218916, 4218917, 4218918 |
| | NTS Sheet | 43C/II |
| | Projection | UTM Zone 16N NAD83 |
| | Scale | 1:1500 |
| 2009 Assessment Map | Drafted By | N. D. Redlich |
| T1 Project - Plan Map | Date | 29-JUL-09 |
| Northern Ontario | | |



| Legend | |
|---|---------------|
| Core Drill Hole Collar | ⊙ |
| Section Line | — |
| Inferred Extent of Kimberlite Pipe at Surface | - - - |
| Claim Boundaries and Numbers | CLAIM 4218915 |
| Stream | — |

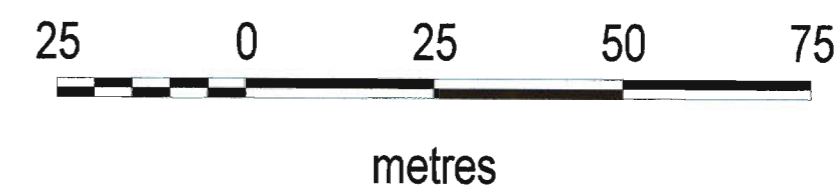
Looking West

(Azimuth = 274.7°)



Legend

- Core Drill Hole Trace
- Section Line Markers
- Inferred Extent of Kimberlite Pipe at Surface
- Lithologic Kimberlite Interval
- Surface
- Lithologic Interval Description Text



| | | |
|---|--------------------------|------------------------------|
| Metalex Ventures Ltd | Division | Porcupine |
| | Township / Area | South of Missisa R. (G-3853) |
| | Claim Number (all holes) | 3015701 |
| | NTS Sheet | 43C/II |
| 2009 Assessment Map T1 Project - Section A - A' Northern Ontario | Projection | UTM Zone 16N NAD83 |
| | Scale | 1:1000 |
| | Drafted By | N. D. Redlich |
| | Date | 30-JUL-09 |