



P.O. Box 219, 14579 Government Road, Larder Lake, Ontario, Canada, P0K 1L0

Telephone: +1 705.643.2345 Facsimile: +1 705.643.2191 Email: katrine@larder.ca
www.explorationservices.ca

AMADOR GOLD CORP.

PROSPECTING SURVEY MOHER PROPERTY

MOHER TOWNSHIP, ONTARIO

TABLE OF CONTENTS

1. SURVEY DETAILS 1

1.1 PROJECT NAME..... 1

1.2 CLIENT 1

1.3 LOCATION 1

1.4 ACCESS 2

1.5 GENERAL GEOLOGY 2

1.6 PREVIOUS WORK 2

2. SURVEY WORK UNDERTAKEN 2

2.1 PERSONNEL 2

2.2 PURPOSE..... 2

3. PROSPECTING DIARY AND NOTES..... 3

3.1 AUGUST 26TH, 2008..... 3

3.2 AUGUST 27TH, 2008..... 3

4. RECOMMENDATIONS 4

5. REFERENCES..... 4

LIST OF APPENDICES

- APPENDIX A: STATEMENT OF QUALIFICATIONS**
- APPENDIX B: INSTRUMENT SPECIFICATIONS**
- APPENDIX C: TRAVERSE MAPS**
- APPENDIX D: MAPS IN BACK POCKET**

LIST OF TABLES AND FIGURES

Figure 1: Location of the Moher Property..... 1



1. SURVEY DETAILS

1.1 PROJECT NAME

This project is known as the Moher Property

1.2 CLIENT

Amador Gold Corp.
711-675 West Hastings Street
Vancouver, British Columbia
Canada, V6B 1N2

1.3 LOCATION

The Moher Property is located in the northwest corner of Moher Township approximately, 86Km south of Timmins within the Sudbury mining District.

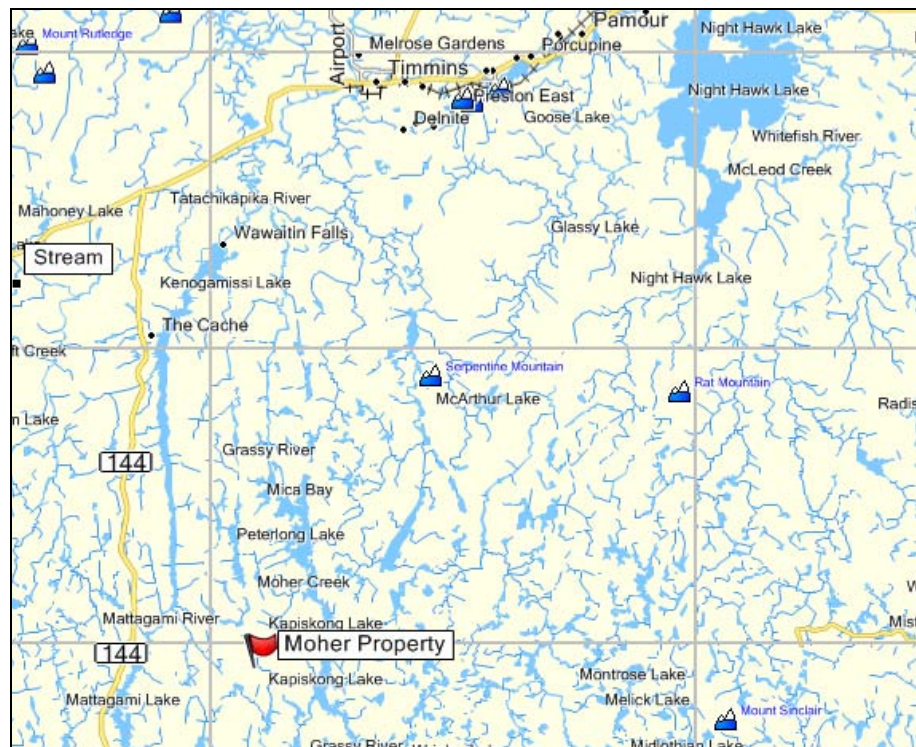


Figure 1: Location of the Moher Property

1.4 ACCESS

The property is accessible by following highway 101 West from Timmins. Turn left onto Hwy 144 South, and travel south for roughly 44Km towards Mattagami Dam Road. Turn left onto the Mattagami Dam Road and follow it for roughly 11Km and you will be on the site.

1.5 GENERAL GEOLOGY

The general geology consisted of Late Granitic Rocks in the area prospected, with some Mafic Intrusive Rocks (Diabase). Molybdenite showing on property, but this was not seen while prospecting

1.6 PREVIOUS WORK

Unable to find any documentation on previous work done on this site.

2. SURVEY WORK UNDERTAKEN

2.1 PERSONNEL

Prospecting was performed by Laurie Morin of Ottawa, ON and Amanda Rungis of Timmins, ON. They are both Geological Technicians with diplomas from Sir Sanford Fleming College.

2.2 PURPOSE

The main purpose of the prospecting traverses was to locate and GPS the historic work. This would allow follow-up programs to be designed around these locations.

3. PROSPECTING DIARY AND NOTES

ALL SAMPLES WERE TAKEN FOR REFERENCE PURPOSES ONLY! NO SAMPLES HAVE BEEN SENT TO LAB FOR ANALYSIS.

3.1 AUGUST 26TH, 2008

Nothing of interest was noted on this day.

3.2 AUGUST 27TH, 2008

MOHERSAM1

- sample obtained from the first outcrop seen on the property to ID rock type in the area.
- sample is orange in color, with white and dark banding throughout. Its weathered surface has surface calcite, approximately 5mm thick. It has a small grain size. The sample is brittle and will break apart easily with little force.

LP 4217582 a

Location: 700m N of Post 2

Quartz Vein

- seen on clean face of rock outcrop beside lake. Vein is roughly 1m long x 3cm wide, width tapers at both ends.
- vein is surrounded by felsic volcanic rock
- there were strong joint sets also seen on the surface of this rock.

LP4217582 b

Location: 1200m N of Post 2

CP4217582

Post #1

MOHERSAM2

- sample obtained from bedrock to ID rock in the area.
- sample is dark grey mafic igneous rock with pyrite throughout. It has a small grain size and its weathered surface has rust.

Waypoint Map Location	UTM NAD 83 Zone 17	Claim Post Reference: 4217582 17T 467957 5316142
MOHERSAM1	17T 467890E 5315073N	1.1Km @ 4°T from post #1- 4217582
LP 4217582 a	17T 467898E 5315268N	887m @ 3°T from post #1- 4217582
Quartz Vein	17T 467827E 5315613N	556m @ 14°T from post #1- 4217582
LP4217582 b	17T 467849E 5315703N	453m @ 13°T from post #1- 4217582
MOHERSAM2	17T 467280E 5315245N	1.1km @ 37°T from post #1- 4217582

Table 1: Waypoint Locations for August 27, 2008

4. RECOMMENDATIONS

No further recommendations at this time due to the lack of structures seen on the property.

5. REFERENCES

Bright, E.G. 1984. Geology of the Ferrier Lake-Canoeshed Lake Area, District of Sudbury. Publication No. R231. Ontario Ministry of Northern Development and Mines, Ontario Geological Survey. [Online] <<<http://www.geologyontario.mndm.gov.on.ca>>>. Accessed Sept 25th, 2008

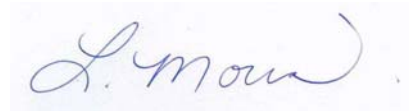
APPENDIX A

STATEMENT OF QUALIFICATIONS

I Laurie A Morin, hereby declare that:

1. I graduated from Sir Sandford Fleming College from the Geological Technician Program.
2. I am an Associate member of Ontario Association of Certified Technicians and Technologists (OACETT)
3. I do not have nor expect an interest in the properties and securities of **Amador Gold Corp.**
4. The statements made in this report represent my professional opinion based on my consideration of the information available to me at the time of writing this report.

Larder Lake, ON
August, 2008



Laurie Morin

Geological Technician

Katrine Exploration and Development Inc.

APPENDIX B**GARMIN GPS 76****GARMIN RINO 520HCx****GPS Performance**

Receiver: WAAS enabled, 12 parallel channel GPS receiver continuously tracks and uses up to 12 satellites to compute and update your position

Navigation Features

- Waypoints/icons:** 500 with name and graphic symbol, 10 nearest (automatic), 10 proximity
- Routes:** 50 reversible routes with up to 50 points each, plus MOB and TracBack® modes
- Tracks:** Automatic track log; 10 saved tracks let you retrace your path in both directions
- Trip computer:** Current speed, average speed, resettable max. speed, trip timer and trip distance
- Alarms:** Anchor drag, approach and arrival, off-course, proximity waypoint, shallow water and deep water
- Tables:** Built in celestial tables for best times to fish and hunt, sun and moon rise, set and location
- Map datums:** More than 100 plus user datum
- Position format:** Lat/Lon, UTM/UPS, Maidenhead, MGRS, Loran TDs and other grids, including user grid

Acquisition times

- Warm:** Approximately 15 seconds
- Cold:** Approximately 45 seconds
- AutoLocate®:** Approximately 2 minutes
- Update rate:** 1/second, continuous

GPS accuracy

- Position:** < 15 meters, 95% typical*
- Velocity:** 0.05 meter/sec steady state

WAAS accuracy

Position: < 3 meters, 95% typical*
Velocity: 0.05 meter/sec steady state

Power

Source: Rechargeable 2-cell lithium ion pack
Battery Life: Up to 16 hours

Physical

Size: 2.3"W x 5.1"H x 1.8"D (13.2 x 5.8x 4.6cm)
Weight: 10.3 ounces

Display

1.3W x 1.7"H (3.3 x 4.3 cm)
176 x 220 pixels
256 level color TFT

Case: Fully gasketed, high-impact plastic alloy, waterproof to IEC 529 IPX7 standards

Interfaces: RS232 with NMEA 0183, RTCM 104 DGPS data format and proprietary Garmin®

Antenna: Quad-helix

Differential: DGPS (USCG and WAAS capable)

Temperature range: 4°F to 140°F (-20°C to 60°C)

Dynamics: 6 g's

User data storage: up to 500 waypoints, no memory battery required

Specifications obtained from www.garmin.com

APPENDIX C

PROSPECTING TRAVERSE MAPS



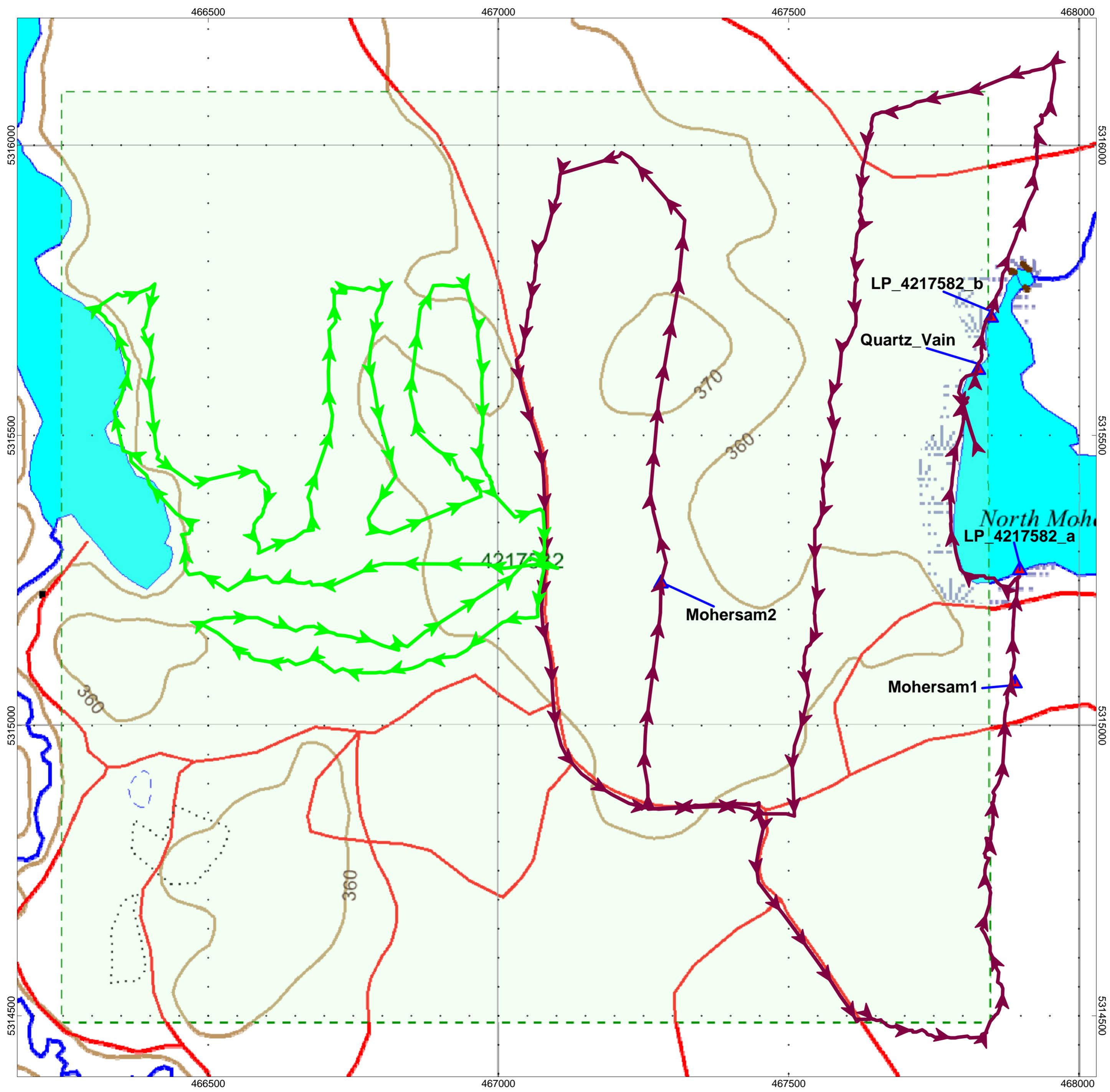
August 26th, 2008- Travers Map of Moher Property




APPENDIX D


MAPS IN BACK POCKET

Prospecting Traverse on Claim Maps (1:5000)

1) AMADOR-MOHER-PROSPECTING-AUGUST 26-27 2008



AUGUST 26, 2008 TRAVERSE 
 AUGUST 27, 2008 TRAVERSE 
 WAYPOINTS 

AMADOR GOLD CORP.	
MOHER PROPERTY Moher Township, Ontario	
<i>PROSPECTING TRAVERSES</i> AUGUST 26 to 27, 2008	
See prospecting diary, section 3 in report	 Katrine Exploration
Traverse Completed by: Laurie Morin and Amanda Rungis Map Drawn by: Belinda Bailey	
<i>Drawing: AMADOR GOLD-MOHER- PROSPECTING-AUG 26-27-2008</i>	

