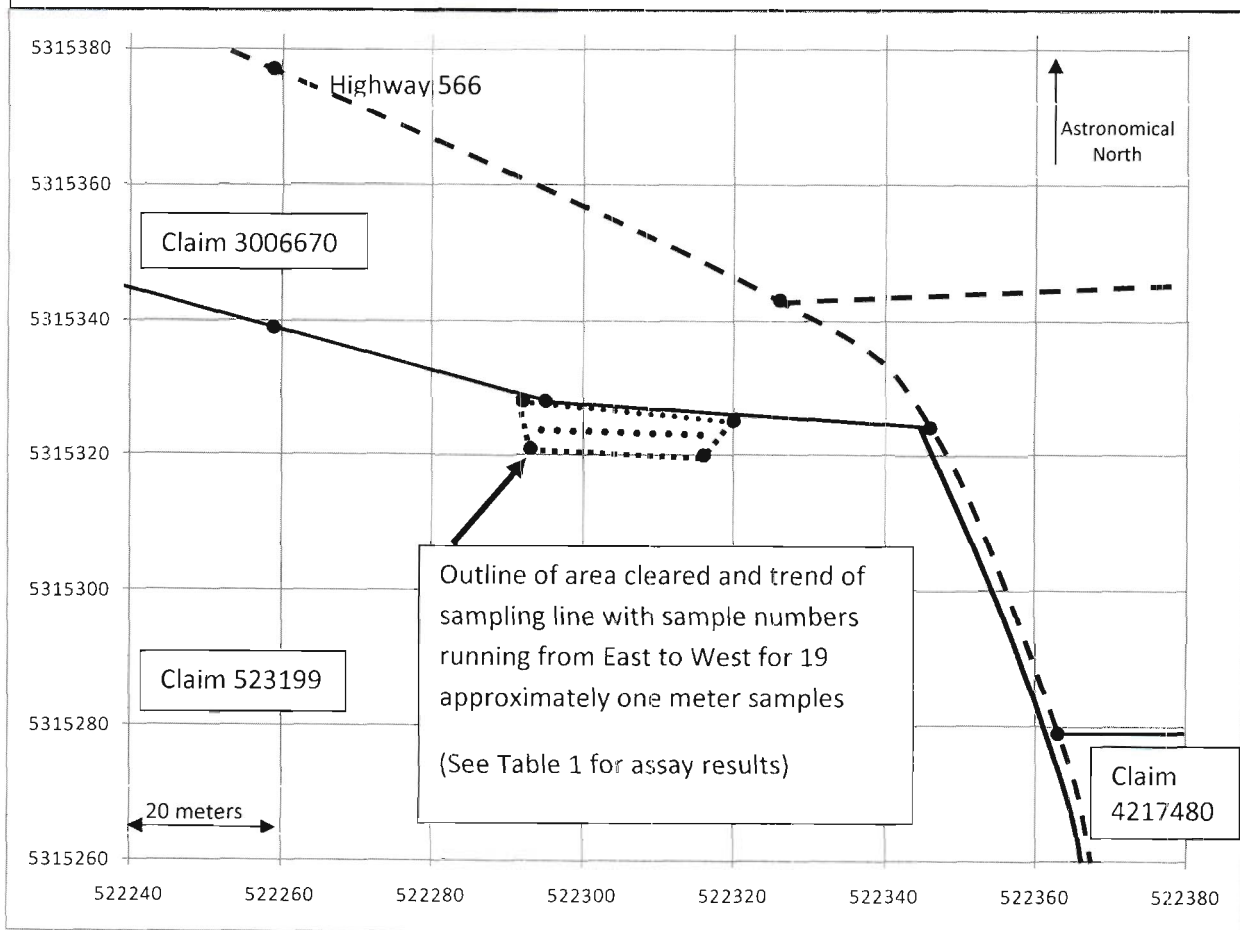


# PACIFIC COMOX RESOURCES LTD. 2.42547

Assessment Work Submission

Powell Township, Larder Lake Mining Division

Figure below gives location of previously cleared (believed to have in the 1960's) area which was washed and resampled with sawn channel samples at North end of Claim 523199



UTM Zone 17 NAD 83 20 meter grid

Magnetic Declination used is 11 degrees west

Prepared by Pacific Comox Resources Ltd., August 31, 2009

Table 1

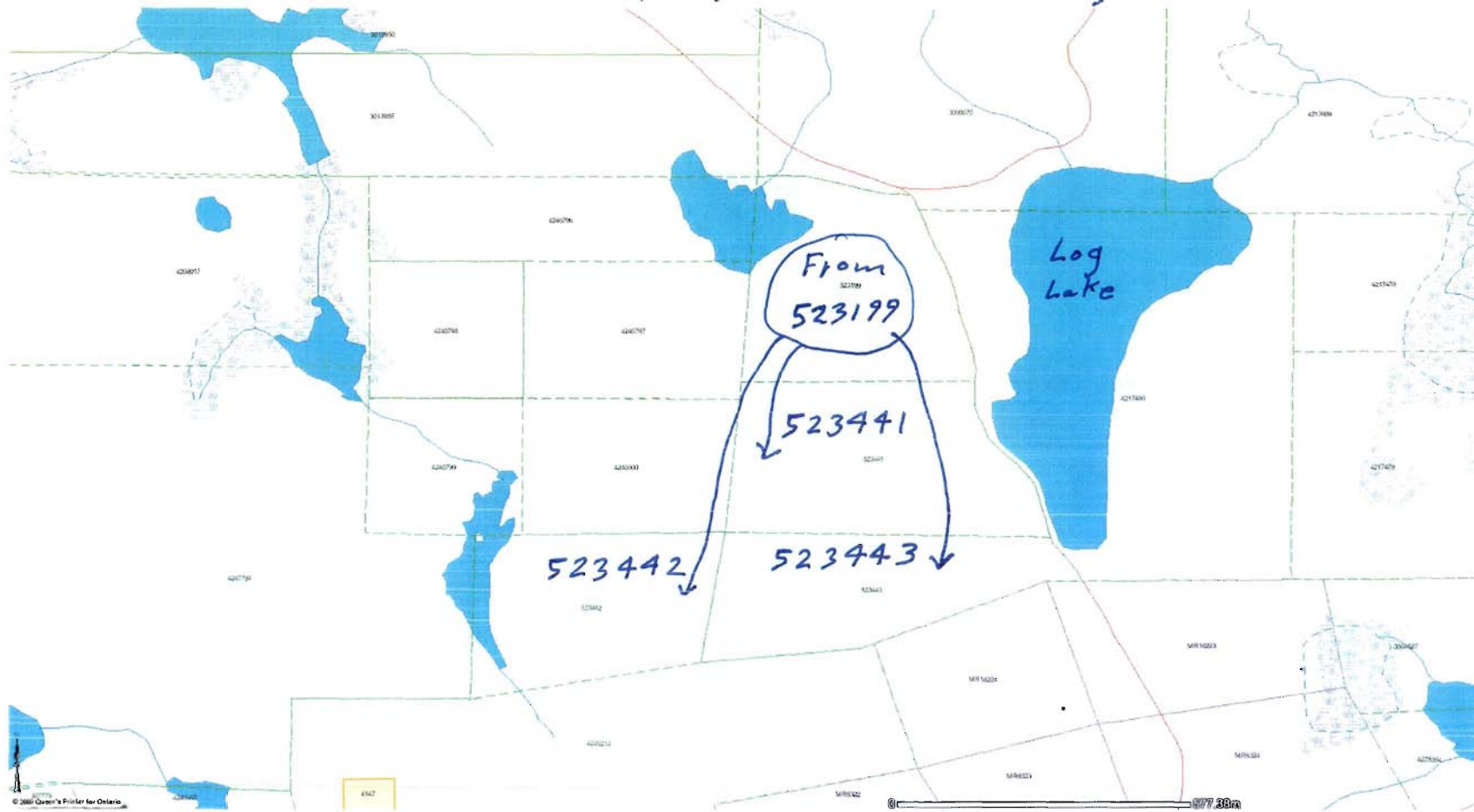
ASSAY RESULTS FOR CHANNEL SAMPLES TAKEN ON CLAIM 523199

BY PACIFIC COMOX RESOURCES LTD. AUGUST 2009

Sample #	Au g/tonne	Ag g/tonne	Cu %	Mo %	Comment
50151	NIL	0.2	0.005	0.001	diorite
50152	0.01	0.2	0.001	0.001	diorite
50153	NIL	0.2	0.002	0.001	diorite
50154	NIL	0.2	0.001	0.001	diorite
50155	NIL	0.2	0.002	0.002	diorite
50156	NIL	0.2	0.007	0.001	diorite
50157	NIL	0.2	0.01	0.002	diorite
50158	NIL	0.4	0.007	0.001	diorite
50159	NIL	0.8	0.007	0.002	diorite
50160	NIL	0.8	0.004	0.001	diorite
50161	NIL	0.8	0.003	0.001	diorite
50162	0.01	1.2	0.006	0.001	quartz vein matrix
50163	0.01	5.8	0.037	0.024	quartz vein matrix
50164	0.03	17.2	0.273	0.139	quartz vein matrix
50165	NIL	1.2	0.013	0.004	quartz vein matrix
50166	0.01	1.8	0.012	0.001	quartz vein matrix
50167	NIL	0.4	0.003	0.002	diorite
50168	NIL	0.2	0.005	0.001	diorite
50169	0.01	0.8	0.011	0.001	diorite

Assays processed by Swastika Laboratories (2008) Ltd. Swastika, Ontario Canada

# PACIFIC COMOX RESOURCES Assessment Work Filing



# Canadian Gems & Minerals Ltd.



DATE:  
08/06/09

PO Box 834  
Kirkland Lake, ON, P2N 3K4  
Phone: 705-568-8396  
Cell: 705-568-0128  
Fax: 705-568-8396

INVOICE # 1031-09  
PAGE 1 of 1

GST#100764901RT0001

Bill To:  
Pacific Comox  
One Dundas St. West  
Toronto, ON M5G 1Z3

Location:  
Powell Township

DESCRIPTION	DATE	Daily Rate	Hourly Rate	Monthly Rate	FLAT RATE	STAKING	Km Travel Rate	AMOUNT
From KL to Location Return 140 Kms @	Jul-30						\$0.50	\$70.00
Tom O'Connor 1 day @	Jul-30	\$300.00						\$300.00
Helper 1 day @	Jul-30	\$250.00						\$250.00
Blade	Jul-30				\$250.00			\$250.00
Pump	Jul-30	\$150.00						\$150.00
Channel Saw	Jul-30	\$65.00						\$65.00
							<b>SUB TOTAL</b>	<b>\$1,085.00</b>
							<b>GST</b>	<b>\$54.25</b>
							<b>Total</b>	<b>\$1,139.25</b>

Terms -  
Due Upon Receipt

Swastika Laboratories (2008) Ltd

Box 10, 1 Cameron Ave  
Swastika, ON  
P0K 1T0

# Invoice

Date	Invoice #
8/21/2009	5211

Invoice To
PACIFIC COMOX RESOURCES LTD. 1 DUNDAS STREET WEST SUITE 2300 BOX 13 TORONTO, ONTARIO M5G 1Z3

*Handwritten notes:*  
11/11/09  
PACIFIC COMOX  
11/11/09  
80

P.O. No.	Terms
	30 DAYS

Qty	Description	Cert #	Rate	Amount
2	GOLD ASSAY	9W-2191-RA1	9.00	18.00
2	SILVER		8.00	16.00
2	COPPER		8.00	16.00
2	MOLYBDENUM		8.00	16.00
2	SAMPLE PREPARATION		4.50	9.00
17	GOLD ASSAY	9W-2195-RA1	9.00	153.00
17	SILVER		8.00	136.00
17	COPPER		8.00	136.00
17	MOLYBDENUM		8.00	136.00
17	SAMPLE PREPARATION		4.50	76.50
27	GOLD ASSAY	9W-2224-RA1	9.00	243.00
27	SILVER		8.00	216.00
27	COPPER		8.00	216.00
27	MOLYBDENUM		8.00	216.00
27	SAMPLE PREPARATION		4.50	121.50
	GST 5% on sales		5.00%	86.25

Thank you for your business.	<b>GST Tax Total</b>	\$86.25
------------------------------	----------------------	---------

<i>Pro rata charge for 19 samples is \$748.13</i>	<b>Total</b>	\$1,811.25
---	--------------	------------



Established 1928

# Swastika Laboratories Ltd

Assaying - Consulting - Representation

## Assay Certificate

9W-2191-RA1

Date: AUG-18-09

Company: **PACIFIC COMOX RESOURCES**  
Project:  
Attn: **D. EMPEY**

We hereby certify the following Assay of 2 ROCK samples submitted AUG-07-09 by .

Sample Number	Au g/tonne	Au Check g/tonne	Ag g/tonne	Cu %	Mo %
50151	NIL	-	0.2	0.005	0.001
50152	0.01	NIL	0.2	0.001	0.001
BLANK	NIL	-			
STD OXH66	1.32	-			

Certified by 



Established 1928

# Swastika Laboratories Ltd

Assaying - Consulting - Representation

## Assay Certificate

**9W-2195-RA1**

Company: **PACIFIC COMOX RESOURCES**

Date: AUG-17-09

Project:

Attn:

We hereby certify the following Assay of 17 ROCK samples submitted AUG-07-09 by .

Sample Number	Au g/tonne	Au Check g/tonne	Ag g/tonne	Cu %	Mo %
50153	NIL	-	0.2	0.002	0.001
50154	NIL	-	0.2	0.001	0.001
50155	NIL	-	0.2	0.002	0.002
50156	NIL	-	0.2	0.007	0.001
50157	NIL	-	0.2	0.010	0.002
50158	NIL	-	0.4	0.007	0.001
50159	NIL	-	0.8	0.007	0.002
50160	NIL	NIL	0.8	0.004	0.001
50161	NIL	-	0.8	0.003	0.001
50162	0.01	-	1.2	0.006	0.001
50163	0.01	-	5.8	0.037	0.024
50164	0.03	-	17.2	0.273	0.139
50165	NIL	-	1.2	0.013	0.004
50166	0.01	-	1.8	0.012	0.001
50167	NIL	NIL	0.4	0.003	0.002
50168	NIL	-	0.2	0.005	0.001
50169	0.01	-	0.8	0.011	0.001
BLANK	NIL	-			
STD OXH66	1.30	-			

Certified by 