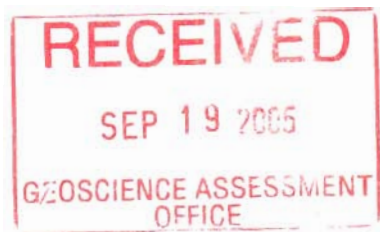


REPORT
on a
PROSPECTING and SAMPLING PROGRAM
on the
GROVES TOWNSHIP PROPERTY
PORCUPINE MINING DIVISION
for
2004428 ONTARIO INC.

2 . 30554



Submitted by: Vision Exploration
September 19, 2005

TABLE OF CONTENTS

	<u>Page</u>
Introduction.....	1
Location and Access.....	2
Personnel.....	2
Previous Work.....	2
Claims.....	3
Work Program.....	3
Results.....	4
Recommendations and Conclusions.....	4
Certificate.....	5

FIGURES

Regional Location Map.....	Figure #1
Claim Sketch- Groves Twp.....	Figure #2

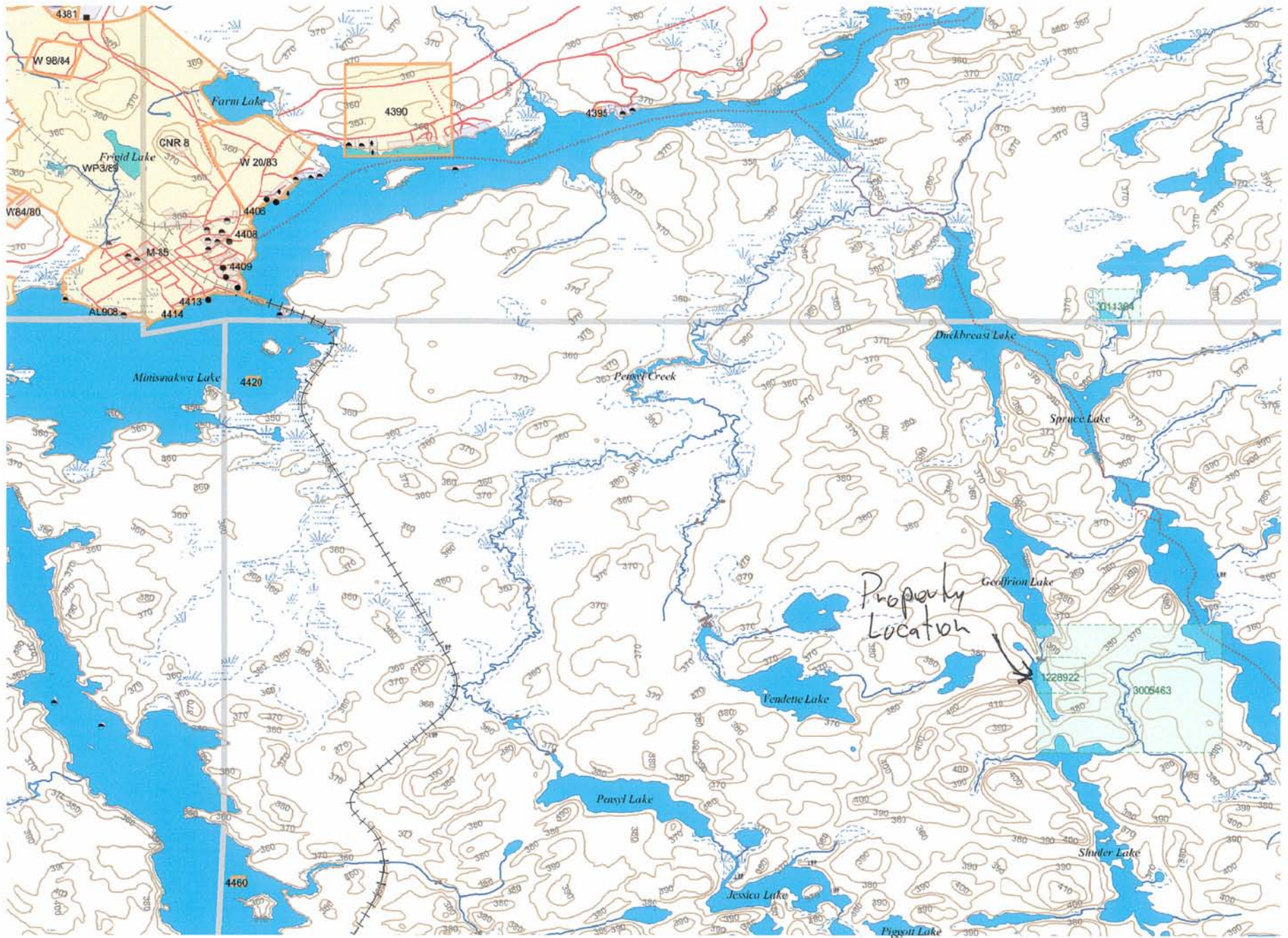
APPENDICES

Assay Certificates.....	Appendix A
-------------------------	------------

INTRODUCTION

The following report will deal with the results of a prospecting and sampling program carried out on the Groves Township Property. The property is made up of two, unpatented block and single unit (16 units) mining claims, located in Groves Township, Porcupine Mining Division, Ontario. This work was carried out over a two day period. The focuses of this prospecting program was to determine if the geological setting has the potential to host a copper-nickel, platinum deposit. A total of 9 rock samples were taken over a two-day period during the month of October 2003.

The purpose of this program was to provide reconnaissance geological data that may reflect the gold, copper, nickel and platinum content of the underlying geology.



Property Location

Regional Location Map

NAD 83
5 degree grd

LOCATION AND ACCESS

The Groves Township Property consists of 2 unpatented mining claims (16 units) situated within the central portion of Groves Township, Porcupine Mining Division. The block is located approximately 90 miles southwest of the city of Timmins or 6 miles southeast of the village of Gogama. Groves Lake borders the eastern portion of the block while the CNR rail line runs through the western portion.

Access to the property was gained by boat from the town of Gogama. Groves Lake borders the eastern portion of the claim group. Access to the main showing was gained from Groves Lake

PERSONNEL

The people directly involved with the prospecting programs carried out on the Groves Township properties are follows:

- Steve Anderson... ..Timmins, Ontario
- Donny McKinnon..... Timmins, Ontario

Steve Anderson supervised all work.

PREVIOUS WORK

The current claim holder has not conducted any previous work on the properties. However, the property does have a history of work that was carried out by past claim holders. This includes reported reserves of 500,000 tons of 1.5% Cu, Ni combined. Within these Cu, Ni reserves, anomalous values of platinum were also reported.

Groves Twp

452000E

4E3000E

454000E

455000E



Geoffrion Lake

Sample Location

1228922

3005463

Shuller Lake

Etain Sketch
Groves Twp Prop

Hanover Lake

452000E

4E3000E

454000E

455000E

5274000N

5275000N

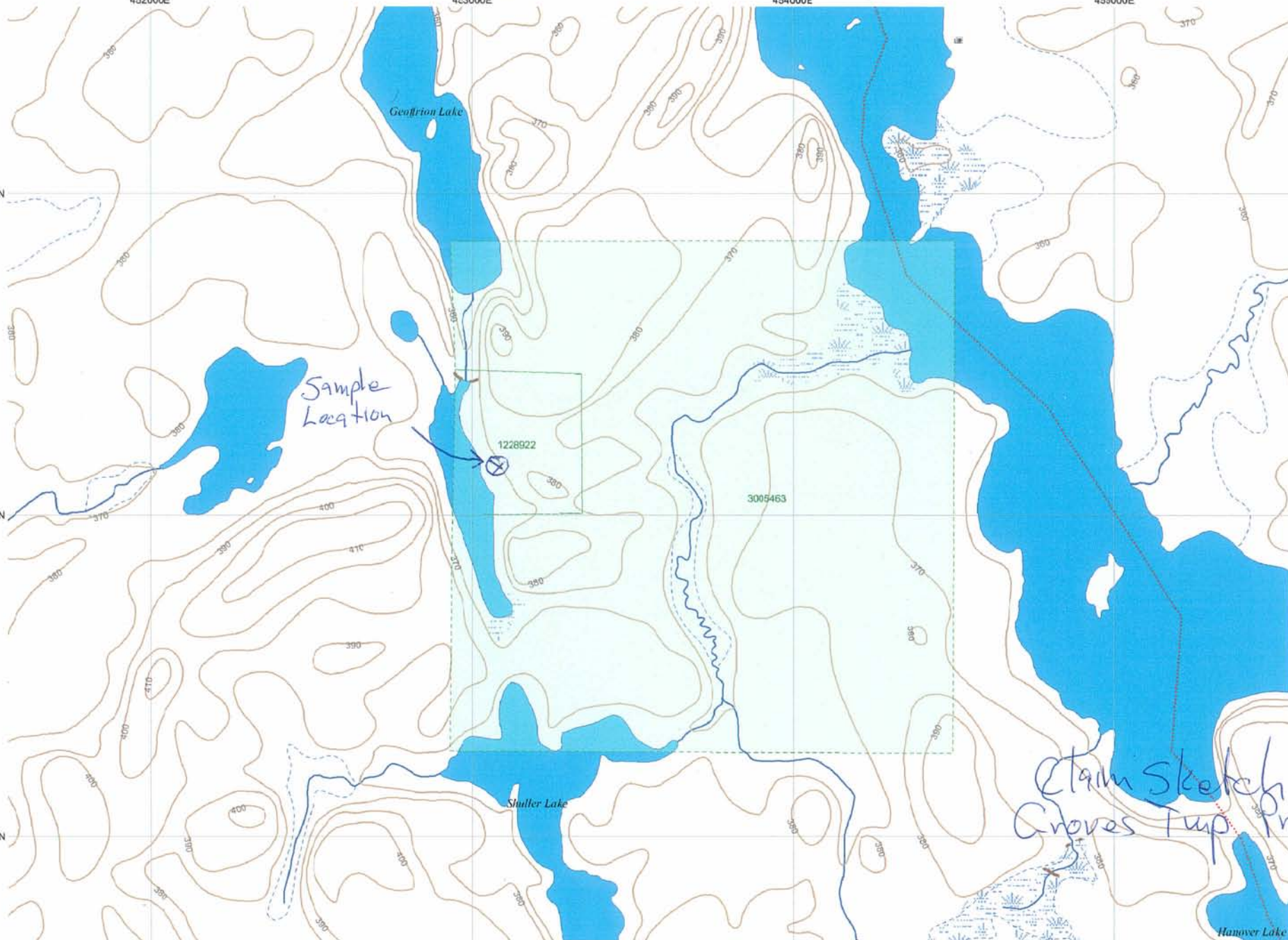
5276000N

5276000N

5275000N

5274000N

UTM Zone 17
1000m grid



CLAIMS

The claims that make up the Groves Township Property are held by 2004428 Ontario Inc and are located in Groves Township, Porcupine Mining Division. The following is a list of the claims.

<u>CLAIM #</u>	<u># OF UNITS</u>	<u>TOWNSHIP</u>
1228922	1	Groves
3005463	15	Groves
-----	-----	
2 claims	16 units	

WORK PROGRAM

The work program carried out on the Groves Township property took the form of reconnaissance prospecting. The property was visited on two separate occasions, focusing on the previously reported copper, nickel and platinum deposition.

The samples taken were from mineralized areas thought to be the main Copper/ Nickel zone outlined in previous reports. The results encountered will be used to justify a larger regional geophysical program.

SURVEY RESULTS

All samples taken were of a felsic intrusive with 5-10% sulphides. All returned anomalous values in copper and nickel. Values as high as 2.7% Cu-Ni were reported. The assay certificate can be found under appendix "A" of this report.

RECOMMENDATIONS AND CONCLUSIONS

As described under results, the prospecting program returned anomalous Cu-Ni values. Additional work should be considered based on the results of this program.

The second phase of the program focused on base metal and platinum deposition. Some of the samples taken show the presence of a favourable geological environment in the area. A regional airborne mag and EM survey should be considered in an attempt to outline any areas of possible mineralization.

CERTIFICATION

I, Steve Anderson of Timmins, Ontario hereby certify that:

1. I hold a three-year Technologist Diploma from Sir Sandford College, Lindsay, Ontario, obtained in May 1981.
2. I have been practising my profession since 1979 in Ontario, Quebec, Nova Scotia, New Brunswick, Newfoundland, NWT, Manitoba Saskatchewan and Greenland.
3. I have been employed directly with Asamera Oil Inc., Urangellschaft Canada Ltd., Nanisivik Mines Ltd., R.S. Middleton Exploration Services Ltd., Rayan Exploration Ltd and am currently an owner of Vision Exploration.
4. I have based conclusions and recommendations contained in this report on knowledge of the area, my previous experience and on the results of the fieldwork conducted on the property during October, 2003.

Dated this 19th day of October, 2003
At Timmins, Ontario.

APPENDIX A
ASSAY CERTIFICATE



Established 1928

Swastika Laboratories Ltd

Assaying - Consulting - Representation

Assay Certificate

3W-3394-RA1

Company: LIBERTY MINERALS EXPL. LTD

Date: NOV-03-03

Project:

Ann: E. Ludwig

We hereby certify the following Assay of 21 Rock samples submitted OCT-24-03 by .

Sample Number	Au g/tonne	Ag Check g/tonne	Ag PPM	Co PPM	Co %	Cu %	K1 %	Pb PPM	Pb %	Zn PPM	Zn %	Fl g/tonne
3501	0.25	0.25	8.6	268	-	0.72	1.23	-	-	-	-	0.12
3502	0.05	0.05	0.1	31	-	0.009	0.015	-	-	-	-	<0.005
3503	0.21	0.25	1.2	69	-	0.118	0.136	-	-	-	-	<0.005
3504	0.27	0.25	3.1	107	-	0.243	0.141	-	-	-	-	<0.005
3505	0.14	0.21	7.4	139	-	0.356	0.255	-	-	-	-	0.06
3506	0.19	-	12.6	385	-	1.54	0.117	-	-	-	-	<0.005
3507	0.01	-	0.4	13	-	0.076	-	-	-	-	-	-
3508	-	-	-	-	-	-	-	-	-	-	-	-
3509	-	-	-	-	-	-	-	-	-	-	-	-
3510	-	-	-	-	-	-	-	-	-	-	-	-
3511	-	-	-	-	-	-	-	-	-	-	-	-
3512	0.40	-	8.6	293	-	1.07	1.61	-	-	-	-	0.06
3513	0.59	-	8.3	462	-	1.25	0.355	-	-	-	-	0.03
3514	0.74	1.00	15.6	541	-	2.08	0.120	-	-	-	-	<0.005
3515	-	-	-	-	-	-	-	-	-	-	-	-
3516	-	-	-	-	-	-	-	-	-	-	-	-
3517	-	-	-	-	-	-	-	-	-	-	-	-
3518	-	-	-	-	-	-	-	-	-	-	-	-
3519	-	-	-	-	-	-	-	-	-	-	-	-
3520	-	-	-	-	-	-	-	-	-	-	-	-

W. Ludwig

Certified by Dennis Chantler

1 Cameron Ave., P.O. Box 10, Swastika, Ontario P0K 1T0
Telephone (705) 642-3244 Fax (705) 642-3300



Established 1928

Swastika Laboratories Ltd

Assaying - Consulting - Representation

Assay Certificate

2.30554

3W-3394-RA1

Company: **LIBERTY MINERALS EXPL. LTD**

Date: NOV-03-03

Project:

Attn: E. Ludwig

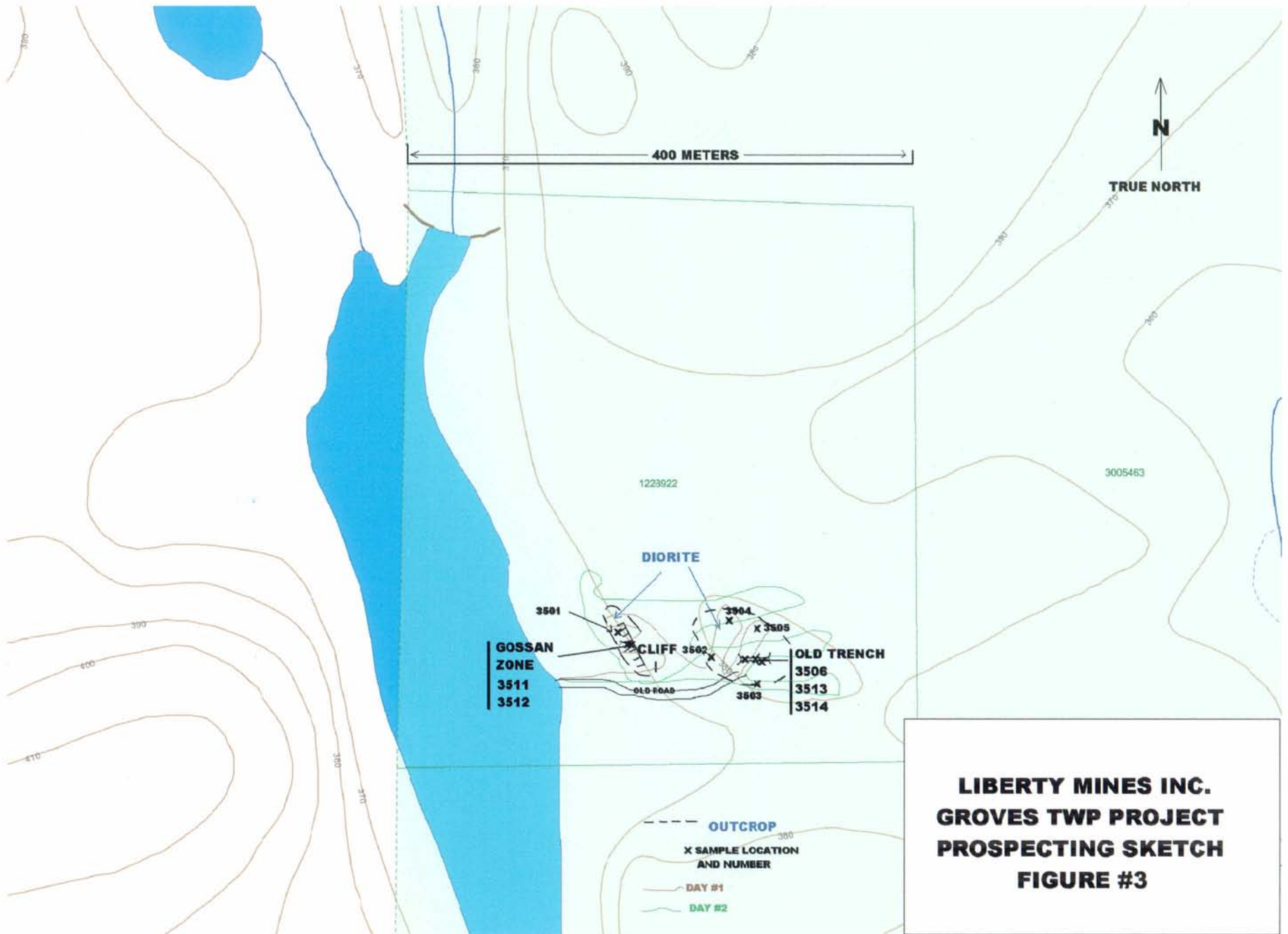
We hereby certify the following Assay of 21 Rock samples submitted OCT-24-03 by .

Sample Number	Au g/tonne	Au Check g/tonne	Ag PPM	Co PPM	Co %	Cu %	Ni %	Pb PPM	Pb %	Zn PPM	Zn %	Pt g/tonne
3501 Groves	0.29	0.25	8.8	868	-	0.73	1.23	-	-	-	-	0.10
3502 Groves	0.05	0.05	0.1	31	-	0.009	0.015	-	-	-	-	<0.005
3503 Groves	0.21	0.25	1.2	69	-	0.118	0.136	-	-	-	-	<0.005
3504 Groves	0.27	0.25	3.1	107	-	0.243	0.141	-	-	-	-	<0.005
3505 Groves	0.14	0.21	7.4	139	-	0.356	0.255	-	-	-	-	0.06
3506 Groves Green Hill	0.19	-	12.6	365	-	1.54	0.117	-	-	-	-	<0.005
3507 Groves	0.02	-	0.6	0.6	-	0.076	-	-	-	-	-	-
3508 Groves	0.03	-	0.6	0.6	-	0.076	-	-	-	-	-	-
3509 Groves	0.03	-	0.6	0.6	-	0.076	-	-	-	-	-	-
3510 Groves	0.03	-	0.6	0.6	-	0.076	-	-	-	-	-	-
3511 Groves	1.22	1.00	8.6	238	-	1.40	1.02	-	-	-	-	0.09
3512 Groves	0.40	-	8.6	293	-	1.07	1.61	-	-	-	-	0.06
3513 Groves	0.59	-	8.0	462	-	1.25	0.355	-	-	-	-	0.03
3514 Groves	0.74	1.00	15.8	841	-	2.08	0.120	-	-	-	-	<0.005
3515 Groves	1.22	1.00	8.6	238	-	1.40	1.02	-	-	-	-	0.09
3516 Groves	0.40	-	8.6	293	-	1.07	1.61	-	-	-	-	0.06
3517 Groves	0.59	-	8.0	462	-	1.25	0.355	-	-	-	-	0.03
3518 Groves	0.74	1.00	15.8	841	-	2.08	0.120	-	-	-	-	<0.005
3519 Groves	1.22	1.00	8.6	238	-	1.40	1.02	-	-	-	-	0.09
3520 Groves	0.40	-	8.6	293	-	1.07	1.61	-	-	-	-	0.06
3521 Groves	0.59	-	8.0	462	-	1.25	0.355	-	-	-	-	0.03
3522 Groves	0.74	1.00	15.8	841	-	2.08	0.120	-	-	-	-	<0.005
3523 Groves	1.22	1.00	8.6	238	-	1.40	1.02	-	-	-	-	0.09
3524 Groves	0.40	-	8.6	293	-	1.07	1.61	-	-	-	-	0.06
3525 Groves	0.59	-	8.0	462	-	1.25	0.355	-	-	-	-	0.03
3526 Groves	0.74	1.00	15.8	841	-	2.08	0.120	-	-	-	-	<0.005

Green Hill

Certified by Denis Chantre

1 Cameron Ave., P.O. Box 10, Swastika, Ontario P0K 1T0
Telephone (705) 642-3244 Fax (705) 642-3300



**LIBERTY MINES INC.
GROVES TWP PROJECT
PROSPECTING SKETCH
FIGURE #3**