

**2.30176**

**Charlie Mortimer**

**Dore Project**

**Assessment Report on Diamond Drilling**

**NTS 41 O/NE**

**August 8, 2005**

**Todd Keast**

## TABLE OF CONTENTS

|                                   | Page |
|-----------------------------------|------|
| Introduction.....                 | 1    |
| Location and Access.....          | 1    |
| Property.....                     | 1    |
| Topography.....                   | 2    |
| Regional Geology.....             | 2    |
| Property Geology.....             | 2    |
| Exploration Program.....          | 3    |
| Recommendations.....              | 3    |
| References.....                   | 4    |
| Certificate of Qualification..... | 5    |

### Appendices

Diamond Drill Logs

## **INTRODUCTION**

During 2003 and 2004, Charlie Mortimer completed a diamond drill program on a group of claims in Dore Township, situated approximately 100 kilometres southwest of Timmins Ontario, within the Porcupine Mining Division.

The project is located in the Swayze greenstone belt of the Abitibi Subprovince. The greenstone belt is an east-west trending sequence 45km by 25km. Rock types include massive and fragmental rhyolite volcanic rocks, massive basaltic flows, and scattered feldspar porphyry intrusions. Sedimentary rocks are a minor component and include greywacke, argillite, and conglomerate. East-west trending fold axis are prevalent throughout the stratigraphic package.

Diamond drilling interested wide intervals of intense pervasive carbonate alteration with very weak sulphide mineralization. Due to the occurrence of surface gold showings additional work is recommended for the Dore project.

## **LOCATION AND ACCESS**

The property is situated 100 kilometres southwest of Timmins, Ontario. The project is located in Dore Township of the Porcupine Mining Division. The latitude and longitude of the project is NTS 41 0 / NE, 47° 45 ' N 82° 40' E.

Access to the property is excellent. The Folyet Timber road crosscuts the property. The logging road is accessed from Hwy 101 approximately 100 km southwest of Timmins. The property is approximately 55km south of the Hwy.

## **PROPERTY**

The Dore Project consists of 17 unpatented mining claims. The claims are situated in Dore township (G1108) of the Porcupine Mining Division.

The claim holders include Charles Mortimer (59%), Strik Minerals Inc. (11%), and Arnkjell Lovold (30%).

## **TOPOGRAPHY**

The Dore project is characterized by flat to gently rolling topography. The vegetation consists predominantly of balsam and spruce in the low areas, and a mixture of poplar and balsam in the high areas. Outcrop exposure is approximately five to ten percent.

## **REGIONAL GEOLOGY**

The project is situated in the Swayze greenstone belt of the Abitibi Subprovince. The greenstone belt is an east-west trending sequence 45 km by 25 km. Rock types include massive and fragmental rhyolite volcanics, massive basalt flows, and scattered feldspar porphyry intrusions. Sedimentary rocks are a minor component and include greywacke and conglomerate. East-west trending fold axes are prevalent throughout the stratigraphic package.

The Ontario Geological Survey completed a mapping project of Dore township O.D.M. Report 33.

## **PROPERTY GEOLOGY**

The claims are situated over a major east west trending rhyolite / basalt contact. Lithological contacts are preferential sites of structural development, thus important exploration targets.

The geology of the project consists of a thick sequence of volcanic rocks which include mafic volcanic flows, mafic lapilli, conglomerates, and narrow north-south trending diabase dykes, and an east-west oriented 50m wide shear zone. Alteration within the shear zone consists of chlorite – sericite – carbonated schist. Quartz veins were identified at a number of locations along the structure.

## **EXPLORATION PROGRAM**

Charlie Mortimer has completed four diamond drill holes, three of which have reached bedrock. Total drilling of all four holes 2,640 feet. Details of the drill results are included on the drill logs and sections. Location of the drill holes are included on the plan map.

## **CONCLUSIONS AND RECOMMENDATIONS**

Further work is recommended for the Dore Project. Charlie Mortimer is planning to do mechanical stripping of several areas to identify the trend of the carbonate alteration zones.

## REFERENCES

### References:

Donovan, J. F. 1965

Geology of Swayze and Dore Townships. Ontario Department of Mines  
Geological Report No. 33. Accompanied by Map 2070, coloured.

O.G.S. 1982

Airborne Electromagnetic and Total Intensity Magnetic Survey, Swayze Area, Cree  
Lake Sheet, District of Sudbury, 80541.

## CERTIFICATE OF QUALIFICATIONS

I, **Todd Keast**, of 1204 Grace Ave., Porcupine, Ontario, do hereby certify that:

1. I am the author of this report.
2. I am a graduate of the University of Manitoba, Winnipeg, Manitoba, having received an Honors Bachelor of Science (Geology), in 1986.
3. I have practiced in the field of mineral exploration since 1987, for a number of exploration companies throughout Manitoba, Ontario, and Quebec.

Dated at Porcupine, Ontario this 10th day of August, 2005.

Todd Keast, FGAC

**Charlie Mortimer**

Dore Twp.

DDH#: 2002-1

GRID:

MDU: 1154404

Azimuth and Dip: 70/-51

Acid test, "no test" :

E.O.H: 642ft

GRID LOCATION:

UTM, type: E N, none

Start: June 30, 2002 End: Aug 30, 2003

Drill Company:

Charlie Mortimer

Logged by:

T. Keast

| From   | To     | Rock Type                                   | Code | Description  | Hardness | MS | Recovery |
|--------|--------|---|------|--|----------|----|----------|
| 0.00   | 25.00  | Casing                                      | CAS  |  |          |    |          |
| 25.00  | 65.00  | Carbonate/sericite/chlorite alteration Zone |      | Light buff colour, strong sericite carbonate alteration. Core weathered reddish brown due to pervasive carbonate. Pervasive intense alteration but not sheared. Possible altered mafic flows, rare flow texture. Fine fucbsite, 1-2% fine pyrite. Local narraow blocky sections.   |          |    |          |
| 65.00  | 204.00 | Mafic Volcanic Flows                        |      | Dark green medium grained. Gradational upper contact coming out of alteration. Pillow selvedges downunit. at 100ft unit becomes massive mafic flow.  |          |    |          |
| 204.00 | 233.00 | Intermediate Dyke                           |      | Light green grey dike with 7-10% pink fiedspar phenocrysts up to 5mm, euhedral. Sharp upper and lower contacts.  |          |    |          |
| 233.00 | 275.00 | Massive Mafic Flow                          |      | Massive mafic flow, green. Sharp upper contact fine magnetite.   |          |    |          |
| 275.00 | 307.00 | Weak alteration Zone                        |      | Reddish brown alteration overprint of preexisting unit. 1-2% quartz veins.   |          |    |          |
| 307.00 | 361.00 | Massive Mafic Flow                          |      | Dark green massive mafic unit.   |          |    |          |
| 361.00 | 642.00 | Carbonate/sericite/chlorite alteration Zone |      | Light buff colour, strong sericite carbonate alteration. Relatively sharp upper contact 40 deg to CA. Core weathered reddish brown due to pervasive carbonate. Pervasive intense alteration but not sheared. Fine fucbsite, tr fine pyrite, rare grain. Local narraow blocky sections. Rare blue moly on fracture planes. Alteration increases downunit. |          |    |          |
|        |        |   |      |  |          |    |          |
|        |        |   |      | EOH = 642ft  |          |    |          |
|        |        |   |      | Casing left in hole. Hole making water.  |          |    |          |
|        |        |   |      | Core stored at Mortimer camp Dore Twp.   |          |    |          |
|        |        |   |      |  |          |    |          |
|        |        |   |      | Hole spotted 40m north and 100m west of the #2 post of claim 1154404   |          |    |          |
|        |        |   |      |  |          |    |          |
|        |        |   |      |  |          |    |          |
|        |        |   |      |  |          |    |          |
|        |        |   |      |  |          |    |          |



2002-1

Casing  
Carb/Ser/Chlor Schist

U-51

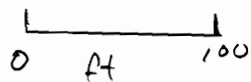
Mafic Volcanics

Intermediate Dyke  
Mafic Volcanics  
Weak Alteration

Mafic Volcanics

carbonate / Ser / Chlor  
alteration Zone

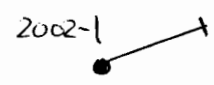
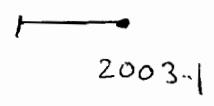
E.O.H  
642 ft



DDH 2002-1  
Az 70°/-51  
View Northwest  
Scale 1 inch = 100 ft

2

115 4404



1:2000

**Charlie Mortimer**

Dore Twp.

DDH#: 2003-1

GRID:

MDU:

Azimuth and Dip: 270/-51

Acid test, "no test" :

E.O.H: 674ft

GRID LOCATION:

UTM, type: E N, none

Start: Sept 2, 2003 End: Oct 30, 2003

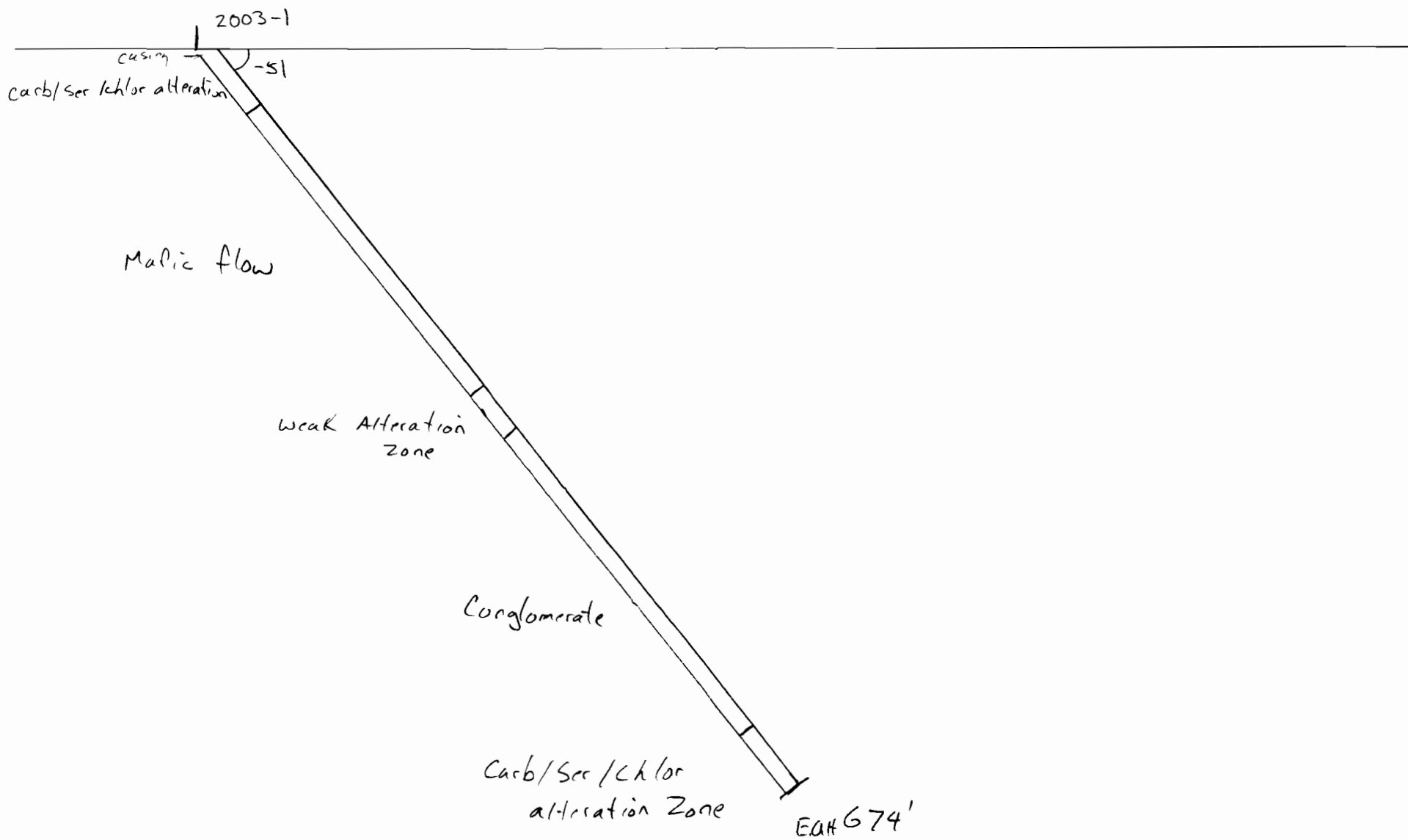
Drill Company:

Charlie Mortimer

Logged by:

T.Keast

| From   | To     | Rock Type                                   | Code | Description   | Hardness | MS | Recovery |
|--------|--------|---|------|---|----------|----|----------|
| 0.00   | 3.00   | Casing                                      |      |   |          |    |          |
| 3.00   | 58.00  | Carbonate/sericite/chlorite alteration Zone |      | Light red colour, strong sericite carbonate alteration. Core weathered reddish brown due to pervasive carbonate. Pervasive intense alteration but not sheared. Remnant flow texture. Fine fuccsite, tr pyrite. Local narrow blocky sections. Rare qtz veins.  | 7        |    | 98       |
| 58.00  | 315.00 | Mafic Flow                                  |      | Light green mafic flows, rare pillow selvedge.  | 6        |    | 90       |
| 315.00 | 355.00 | Weak alteration Zone                        |      | Ligh brown alteratin overprint.   | 7        |    | 95       |
| 355.00 | 625.00 | Conglomerates                               |      | Ligh grey to green matrix with scattered rounded cobbles of granitic material. Matrix supported, not bedded.  | 6-7      |    | 97       |
| 625.00 | 674.00 | Carbonate/sericite/chlorite alteration Zone |      | Light buff colour, strong sericite carbonate alteration. Relatively sharp upper contact 40 deg to CA. Core weathered reddish brown due to pervasive carbonate. Pervasive intense alteration but not sheared. Fine fuccsite, tr fine pyrite, rare grain. Local narrow blocky sections. Rare blue moly on fracture planes. Alteration increases downunit. |          |    |          |
|        |        |   |      | EOH = 674ft   |          |    |          |
|        |        |   |      | Casing pulled.  |          |    |          |
|        |        |   |      | Core stored at Mortimer camp Dore Twp.  |          |    |          |
|        |        |   |      |   |          |    |          |
|        |        |   |      | Hole spotted 180m north and 50m west of the #2 post of claim 1154404  |          |    |          |
|        |        |   |      |   |          |    |          |
|        |        |   |      |   |          |    |          |
|        |        |   |      |   |          |    |          |
|        |        |   |      |   |          |    |          |



0 50 100

2003-1  
Az 280/-50°  
View North  
1" = 100'

### Charlie Mortimer

Dore Twp.  
 DDH#: 2003-2  
 GRID:  
 MDU:

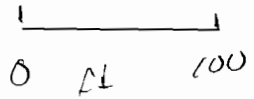
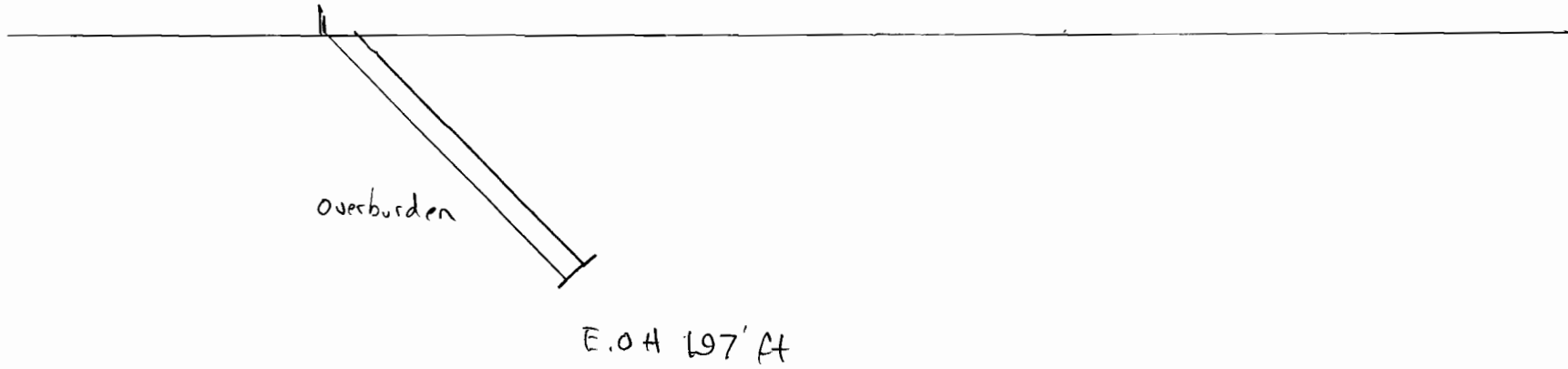
Azimuth and Dip: 40/-45  
 Acid test, "no test" :  
 E.O.H: 197ft

GRID LOCATION:  
 UTM, type: E N,  
 Start: Nov 15, 2003 End: July 10, 2004

Drill Company:  
 Charlie Mortimer  
 Logged by:  
 T.Keast

| From | To     | Rock Type | Code | Description  | Hardness | MS | Recovery |
|------|--------|-----------|------|--|----------|----|----------|
| 0.00 | 197.00 | Casing    | CAS  |  |          |    |          |
|      |        |           |      |  |          |    |          |
|      |        |           |      | Bedrock not reached  |          |    |          |
|      |        |           |      |  |          |    |          |
|      |        |           |      |  |          |    |          |
|      |        |           |      |  |          |    |          |
|      |        |           |      |  |          |    |          |
|      |        |           |      | EOH = 197ft  |          |    |          |
|      |        |           |      | Casing pulled.   |          |    |          |
|      |        |           |      |  |          |    |          |
|      |        |           |      |  |          |    |          |
|      |        |           |      | Hole spotted 335m south and 290m west of the #1 post of claim<br>1154406 |          |    |          |
|      |        |           |      |  |          |    |          |
|      |        |           |      |  |          |    |          |
|      |        |           |      |  |          |    |          |

2003-2



DDH 2003-2

Az 400 / -45

View NAW

scale 1 in = 100 ft



2004-2

Casing -50°

Conglomerate

Graphitic Argillite

Conglomerate

weakly altered  
conglomerate

Conglomerate

Mafic flows

2004-2

Az 280 / -50

View North

scale 1" = 100'



2

115 4406



1:2000

The screenshot displays the CLAIMaps III web application interface. At the top, the title "CLAIMaps III" is on the left, and navigation controls including "Township" (set to "dore"), "GO", "Help", and "Order Map" are on the right. Below the title is a grid of names: HELLYER BIGGS, SILK, RANEY ROLLO COPPELL (A.E.P.), DENYES SWAYZE, DORE, HEENAN, CUNNINGHAM, GARNET, and BENTON. The main map area shows a grid of land parcels with various shaded regions and lines. A scale bar at the bottom right indicates 0 to 668.61 meters. A copyright notice "© 2005 Queen's Printer for Ontario" is visible in the bottom left of the map area. On the right side, a "Layers" panel lists various map features with checkboxes. The "Administrative Boundaries" layer is highlighted as the active layer at the bottom of the interface.

|                              |        |        |
|------------------------------|--------|--------|
| HELLYER BIGGS                |        | SILK   |
| RANEY ROLLO COPPELL (A.E.P.) |        |        |
| DENYES SWAYZE                | DORE   | HEENAN |
| CUNNINGHAM                   | GARNET | BENTON |

Township: dore GO Help Order Map

Legend Layers Print

### Layers

Visible

- Building Points
- Alienations
- Federal Lands
- Parks
- Pending Claims - Including Filed Only Claims
- Disposition Symbols
- Dispositions
- Pending Disposition Symbols
- Pending Dispositions
- Lots & Concessions
- Buildings
- Cliff, Pit & Pile
- Utilities
- Trails
- Roads
- Railways
- Mine Sites
- Mine Headframes
- Towers
- Contours
- Beaver Dams

Administrative Boundaries is now the Active Layer

Pan

**Charlie Mortimer**

Dore Twp.  
 DDH#: 2004-2  
 GRID:  
 MDU:

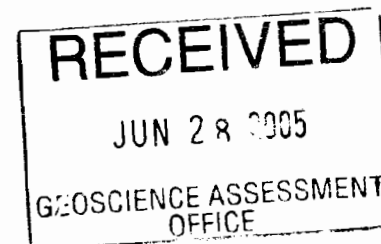
Azimuth and Dip: 280/-50  
 Acid test, "no test" :  
 E.O.H: 1127ft

GRID LOCATION:  
 UTM, type: E N,  
 Start: July 15, 2004 End: Nov 15, 2004

Drill Company:  
 Charlie Mortimer  
 Logged by:  
 T.Keast

| From   | To      | Rock Type                   | Code | Description  | Hardness | MS | Recovery |
|--------|---------|-----------------------------|------|--|----------|----|----------|
| 0.00   | 48.00   | Casing                      | CAS  |  |          |    |          |
| 48.00  | 158.00  | Conglomerate                |      | Light grey green, mixed rounded clasts up to 1 cm diamter. Matrix supported. No apparent bedding. Massive pyrtite clasts throughout. |          |    |          |
| 158.00 | 172.00  | Graphitic Argillite         |      | Graphitic argillite, sheared, well bedded 60 deg to CA.  |          |    |          |
| 172.00 | 280.00  | Conglomerate                |      | As above   |          |    |          |
| 280.00 | 490.00  | Weakly altered conglomerate |      | Above conglomerate but with a weak pervassive carbonate overprint, ligh brown weathering.  |          |    |          |
| 490.00 | 750.00  | Conglomerate                |      | As above non altered.  |          |    |          |
| 750.00 | 1127.00 | Mafic flows                 |      | Dark green massive mafic flows.  |          |    |          |
|        |         |                             |      |  |          |    |          |
|        |         |                             |      |  |          |    |          |
|        |         |                             |      |  |          |    |          |
|        |         |                             |      | EOH = 1127ft   |          |    |          |
|        |         |                             |      | Casing pulled.   |          |    |          |
|        |         |                             |      | Core stored at Mortimer camp Dore Twp.   |          |    |          |
|        |         |                             |      |  |          |    |          |
|        |         |                             |      |  |          |    |          |
|        |         |                             |      | Hole spotted 300m south and 125m west of the #1 post of claim 1154406  |          |    |          |
|        |         |                             |      |  |          |    |          |
|        |         |                             |      |  |          |    |          |
|        |         |                             |      |  |          |    |          |

92108.2



1  
DURE TWP PLAN G-1108

DIAMOND DRILL HOLE INFORMATION

2004-2 DRILLED ~~RECEIVED~~<sup>JULY 15</sup> TO NOV 15/2004

BERRING 280°

DIP 50°

LENGTH OF HOLE 1127 FT

CORE A @ WIRELINE

LOCATION 300 M S 125 MW OF #1 POST  
1154406

DIAMOND DRILLER, CHARLES H. MORTIMER <sup>CLIENT #</sup> 172990  
BOX 136 TIMMINAS CWT PANTON.

HELPER ARRAJELL LOVELL <sup>CLIENT #</sup> 298430

FULRYET DO. MINING CLAIM 1154401

HELPER LUCIAN KRANT <sup>CLIENT #</sup> 301882

2427 SHADREE RD. RABEN NY 14057 USA.

# Charlie Mortimer

Dore Twp.  
 DDH#: 2002-1  
 GRID:  
 MDU:

Azimuth and Dip: 70/-51  
 Acid test, "no test" :  
 E.O.H: 642ft

GRID LOCATION:  
 UTM, type: E N, none

Start: June 30, 2002 End: Aug 30, 2003

Drill Company:  
 Charlie Mortimer  
 Logged by:  
 T.Keast

| From   | To     | Rock Type                                   | Code | Description  | Hardness | MS | Recovery |
|--------|--------|---|------|--|----------|----|----------|
| 0.00   | 25.00  | Casing                                      | CAS  |  |          |    |          |
| 25.00  | 65.00  | Carbonate/sericite/chlorite alteration Zone |      | Light buff colour, strong sericite carbonate alteration. Core weathered reddish brown due to pervasive carbonate. Pervasive intense alteration but not sheared. Possible altered mafic flows, rare flow texture. Fine fucbsite, 1-2% fine pyrite. Local narraow blocky sections.   |          |    |          |
| 65.00  | 204.00 | Mafic Volcanic Flows                        |      | Dark green medium grained. Gradational upper contact coming out of alteration. Pillow selvedges downunit. at 100ft unit becomes massive mafic flow.  |          |    |          |
| 204.00 | 233.00 | Intermediate Dyke                           |      | Light green grey dike with 7-10% pink fiedspar phenocrysts up to 5mm, euhedral. Sharp upper and lower contacts.  |          |    |          |
| 233.00 | 275.00 | Massive Manfic Flow                         |      | Massive mafic flow, green. Sharp upper contact fine magnetite.   |          |    |          |
| 275.00 | 307.00 | Weak alteration Zone                        |      | Reddish brown alteration overprint of preexisting unit. 1-2% quartz veins.   |          |    |          |
| 307.00 | 361.00 | Massive Mafic Flow                          |      | Dark green massive mafic unit.   |          |    |          |
| 361.00 | 642.00 | Carbonate/sericite/chlorite alteration Zone |      | Light buff colour, strong sericite carbonate alteration. Relatively sharp upper contact 40 deg to CA. Core weathered reddish brown due to pervasive carbonate. Pervasive intense alteration but not sheared. Fine fucbsite, tr fine pyrite, rare grain. Local narraow blocky sections. Rare blue moly on fracture planes. Alteration increases downunit. |          |    |          |
|        |        |   |      |  |          |    |          |
|        |        |   |      |  |          |    |          |
|        |        |   |      | EOH = 642ft  |          |    |          |
|        |        |   |      | Casing left in hole. Hole making water.  |          |    |          |
|        |        |   |      | Core stored at Mortimer camp Dore Twp.   |          |    |          |
|        |        |   |      |  |          |    |          |
|        |        |   |      | Hole spotted 40m north and 100m west of the #2 post of claim 1154404   |          |    |          |
|        |        |   |      |  |          |    |          |
|        |        |   |      |  |          |    |          |
|        |        |   |      |  |          |    |          |

**RECEIVED**  
 JUN 28 2005  
 GEOSCIENCE ASSESSMENT of 1  
 OFFICE

# DORE TWP PLAN G-1108

DORE DRILL HOLE INFORMATION

DPH. 2002-1 THIS HOLE IS DESIGNATED  
2002-1 BECAUSE DRILL WAS INTEND TO  
DRILL SITE IN NOV 2002. BUT NO  
DRILLING WAS DONE UNTILL ~~JUNE 30TH~~  
AND COMPLETED ON AUG 30TH 2003.

BEARING 270°

DIP 51°

LENGTH 642 FT.

CORE A.C. WIRELINE

LOCATION 40 M N 100 M W OF # 2 POST

~~DPH 2002-1~~ CLAIM 1154404

DIAMOND DRILLER CHARLES N. MORTIMER CLIENT # 172990

ADDRESS BOX 136 TIMMINS CNT. PAN7C9

HELPER ARKJELL WOULD FELEFET PO.

MINING CLAIM 1154401 CLIENT # 298430

W.0560.01140

2004-2

### Charlie Mortimer

Dore Twp.  
DDH#: 2004-2  
GRID:  
MDU:

Azimuth and Dip: 280/-50  
Acid test, "no test" :  
E.O.H: 1127ft

GRID LOCATION:  
UTM, type: E N,  
Start: July 15, 2004 End: Nov 15, 2004

Drill Company:  
Charlie Mortimer  
Logged by:  
T.Keast

| From   | To      | Rock Type                   | Code | Description  | Hardness | MS | Recovery |
|--------|---------|-----------------------------|------|--|----------|----|----------|
| 0.00   | 48.00   | Casing                      | CAS  |  |          |    |          |
| 48.00  | 158.00  | Conglomerate                |      | Light grey green, mixed rounded clasts up to 1 cm diamter. Matrix supported. No apparent bedding. Massive pyrtite clasts throughout. |          |    |          |
| 158.00 | 172.00  | Graphitic Argillite         |      | Graphitic argillite, sheared, well bedded 60 deg to CA.  |          |    |          |
| 172.00 | 280.00  | Conglomerate                |      | As above   |          |    |          |
| 280.00 | 490.00  | Weakly altered conglomerate |      | Above conglomerate but with a weak pervassive carbonate overprint, ligh brown weathering.  |          |    |          |
| 490.00 | 750.00  | Conglomerate                |      | As above non altered.  |          |    |          |
| 750.00 | 1127.00 | Mafic flows                 |      | Dark green massive mafic flows.  |          |    |          |
|        |         |                             |      |  |          |    |          |
|        |         |                             |      |  |          |    |          |
|        |         |                             |      | EOH = 1127ft   |          |    |          |
|        |         |                             |      | Casing pulled.   |          |    |          |
|        |         |                             |      | Core stored at Mortimer camp Dore Twp.   |          |    |          |
|        |         |                             |      |  |          |    |          |
|        |         |                             |      |  |          |    |          |
|        |         |                             |      | Hole spotted 300m south and 125m west of the #1 post of claim 1154406  |          |    |          |
|        |         |                             |      |  |          |    |          |
|        |         |                             |      |  |          |    |          |
|        |         |                             |      |  |          |    |          |

**RECEIVED**  
 JUN 28 2005  
 GEOSCIENCE ASSESSMENT  
 OFFICE

2.28  
 1154406

1

ADRE TWP PLAN G-1108

DIAMOND DRILL HOLE INFORMATION

2004-2 DRILLED ~~RECEIVED~~<sup>JULY 15</sup> TO NOV 15/2004

BEARING 280°

DIP 50°

LENGTH OF HOLE 1127 FT

CORR A. G. WIRELINE

LOCATION 300 M S 125 M W OF #1 POST

1154406

DIAMOND DRILLER, CHARLES N. MORTIMER <sup>CLIENT #</sup> 172990  
BOX 136 TIMMINAS CWT. PANTON.

HELPER ARKJELL LOUOLD <sup>CLIENT #</sup> 298430

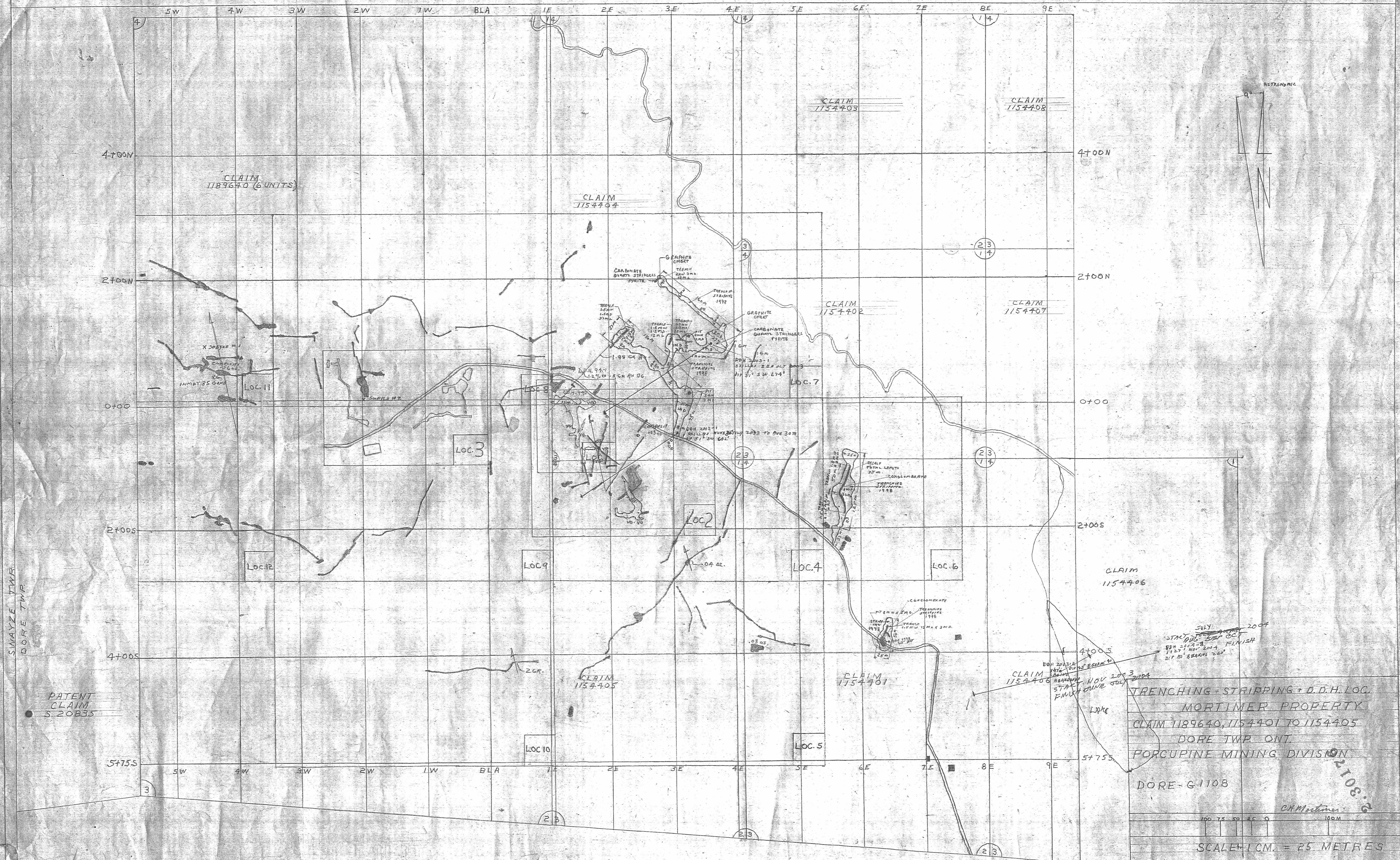
FOLYET D.O. MINING CLAIM 1154401

HELPER LUCIAN KRANT <sup>CLIENT #</sup> 301882

2427 SHADREE RD. EDEN NY 14057 USA.



COPPELL TWP.



PATENT CLAIM S. 20835

TRENCHING - STRIPPING + D.D.H. LOC.  
 MORTIMER PROPERTY  
 CLAIM 1189640, 1154401 TO 1154405  
 DORE TWP. ONT.  
 PORCUPINE MINING DIVISION  
 DORE-G-1108

Scale: 1 CM. = 25 METRES

STAKE 2003-3 FINISH  
 STAKE 2003-3 FINISH  
 STAKE 2003-3 FINISH

2108.6