

Casson Lake Intrusion- Curtin Twp - Sudbury Region, Ontario

Summary of data and previous work

Location

2.31742

Curtin Twp., (geology extends into Mongowin and Roosevelt Townships). approximately 55 km southwest of Sudbury ON.



Property

The property consists of 13 claims (45 units). All claims are in good standing. Access is good via Hwy 6 south from Espanola to Willisville and along Lake Charlton by boat; access to the property is then gained through a series of trails and tertiary roads.

Introduction

The Casson Lake Project is a relatively advanced property with good access and excellent showings. The intrusion is a 2230 Ma Nipissing Diabase sill or dike. The property contains numerous showings and includes the historic Bousquet gold mine and also the Bridger Pond gold mine. PGE Cu- Ni mineralization is associated with sulfides adjacent to and near the contact of the gabbro intrusive and Gowganda Formation (a favourable footwall e.g. Janes Twp. property of PFN). Mineralization also occurs in pods of chromite rich gabbro and diabase. The intrusion is over 12 km long and between 200 and 600m wide.

Research

Geological compilation report by Harron and Associates. Some research has been conducted on mineralization of Nipissing Gabbro in general, Lightfoot and Naldrett 1996, Jobin-Bevans, 1999.

Prospecting and development

BP Resources Canada completed geophysics, drilling and trenching (see below), the core is available and the digital geophysics is as well. There has been a lot of stripping, trenching, sampling, etc. by the property holders Dan Brunne and Roger Stringer over ~18 years.

Geology

Nipissing Diabase intrusions are ~2230 Ma, f.g.- c.g. gabbronorite sills and dikes with strikingly similar geochemistry to East Bull Lake type intrusions. These intrusions generally occur as sills, ring dikes, and dikes intruding Superior Province rocks and the Huronian Supergroup package. They are found intruding mostly as dikes in the Superior Province granitoids and gneisses and as sills within various stratigraphic horizons of the Huronian Supergroup. Commonly 50 to 500m thick, some Nipissing age sills display layering and differentiation with Ni, Cu, Co, Au, Ag, PGE, and mineralization often occurs within the lower section of stratigraphy that frequently occurs along the margins of the intrusion. Mineralization appears to be regionally zoned with higher Ag, and Co in the east and more Cu, Ni, PGE in the central and western areas. These intrusions are formed by slightly variable magmas, which are S- undersaturated, and PGE Cu- Ni fertile (second

stage melts). Some of the best assay results found in Nipissing Diabase intrusions occur in the PFN Janes property (8.7m @ 3.35g/t TPM + 0.57% Cu, 0.33% Ni including 3m @ 8.1g/t TPM + 1.14% Cu, 0.89% Ni). Other results in the Rathbun Intrusion (Flag Resources), and Porter Syncline (Ursa Major) areas are very encouraging.

The Casson Lake intrusion lies on the north limb of the La Cloche Syncline, where Nipissing Gabbro intrudes Gowganda formation (argillaceous dropstone conglomerate) sediments of the Huronian Supergroup. Regional north and northwest trending faults and Sudbury Breccia bodies crosscut and complicate the geology. The Casson Lake intrusion is a differentiated gabbro-norite intrusion with highly variable texture, grain size, and mineralogy. The base of the intrusion is in brecciated igneous contact with footwall sediments. Above the breccia is a unit of equigranular norite, followed by c.g. gabbro, and variably textured gabbro to pegmatitic gabbro near the top of the intrusion. Mineralization is hosted within the basal breccia and the overlying equigranular norite.

Geophysics

BP 1987, airborne VLF-EM, and Mag flown with 125m spacings. IP/RES survey 1974, by Mattagami Lake Mines over western 2/3 of property. BP also did IP. All surveys showed some coincidence with mineralization.

Mineralized Zones

The BP-8, BP-9, BP-10, and BP-11 zones contain significant mineralization over a strike length of over 1 km in the western most section of the property and appear to tie in with mineralization at the BP-1 zone.

The BP-1 zone showing is located near the western edge of the property and consists of a roughly 90 x 30m stripped area where mineralization is well exposed over the entire length. Mineralization is seen in numerous gossans with roughly 2-5% disseminated to blebby cpy + po. The intrusive at the BP-1 zone is a heterogeneous gabbro/diabase with very coarse grained to pegmatitic patches and more mafic patches. Mattagami Lake Mines Ltd. drilled 3 holes (no assays available). Curtin Mines tested the zone in 1979 with DDH 79-2, intersecting .51% Cu and 0.2% Ni over 23.5m (no assays for PGE). BP drilled 6 holes mostly from the north to the south, none of the holes were drilled with proper stratigraphic control, although one hole did intersect 3m @ 2.09 g/t TPM. This zone is set to be channel sampled but needs a 1 x 1-m grid sampling and detailed mapping before further drilling.

The BP-G zone is a small (15 x 30m) stripped area with some visible gossans and heterogeneous gabbro, located approx. 850m east of the BP-1 zone. This area is a newly stripped area and will be channel sampled in the coming months.

The North Bousquet Zone is a freshly stripped area located 1.5km east of the BP-1 Zone. Stripping has identified a large area of gossan not sampled by the surface or drilling program of BP. BP grab samples indicate mineralization up to 3.2 g/t TPM.

BP Zones 5, 6, and 7 located 2.4- 3 km east of the BP-1 zone. These are showings that expose mineralization on an apparent trend over 600m. These zones show mineralization of large blebby sulfides in a qtz and fragment bearing heterogeneous gabbro. A distinctive shear zone cutting these zones and associated gossan may be used to correlate geology along strike.

The AN-3 zone is a stripped area 40m x 70m located approximately 5km east of the BP-1 Zone near Casson Lake. This area contains a chromite rich gabbro overlain by fragment bearing pegmatitic gabbro. One 0.5m channel sample assayed at 10 g/t PGE, 0.3 % Cu , 0.1 % Ni and 0.37% Cr.

The AN-1, AN-2, AN-4 and Malachite Pit zones are all stripped areas in the western portion of the property these zones show similar mineralization to other areas on the property.

Significant gold mineralization occurs at several showings on the property including the historic Bousquet Gold Mine and the Bridger Pond gold mine.

Results

Grab Sample Assays

Some of the better samples from locations across the Casson Lk. gabbro.

Location	Pd (g/t)	Pt (g/t)	Au (g/t)	PGE (g/t)	Cu %	Ni %
BP-1	1.4	1.1	4.4	6.9	0.4	0.08
BP-5	2.1	0.8	0.3	3.2	0.9	0.09
BP-6	2.4	0.5	0.8	3.7	0.7	0.17
BP-7	3.6	0.7	0.7	5.0	0.3	0.06
BP-8	0.7	0.5	0.4	1.6	0.4	0.14
BP-9	0.9	0.8	0.7	2.4	0.3	0.07
BP-10	2.1	0.5	0.9	3.5	0.8	0.28
BP-12	1.4	0.3	0.6	2.3	0.4	0.22
BP Bousquet N	2.5	0.4	0.3	3.2	0.3	0.05
AN-2	2.6	0.5	0.8	3.9	0.7	0.26
AN-3	4.5	3.4	0.9	8.8	0.3	0.12
AN-4	2.2	0.5	0.4	3.1	0.6	0.25
Bousquet Gold			119.2			

Note: showings BP-10 and AN-3 are 7 km apart along the gabbro with other showings (BP-5, BP-7) between.

Drill Core Assays

30 holes for a total of 3526m have been drilled on the property by BP and Curtin Mines. Mr. Brunne has drilled some shorter holes mostly for gold. 2750 m of core is available for relogging and sampling. **Most drilling has been done without sufficient structural or geological control.** Best results were returned for holes BP 74-9 (14m @ 0.52 g/t PGE 0.14% Cu and 0.06% Ni) and BP 75-2 (3m @ 0.49 g/t PGE 0.14% Cu and 0.07% Ni).

Falconbridge Grab Samples

Samples from various showings visited during a 2003 property exam returned results similar to BP and Brunne/ Macdonald Mines samples. All mineralized samples returned highly anomalous

PGE Cu-Ni values, with a high value of **3.39 g/t Pd+Pt+Au, 0.76% Cu and 0.35% Ni** and all others over 0.5 g/t PGE. Two non- mineralized stratigraphic samples were taken and show depleted PGE and Cu Ni values relative to common Nipissing Gabbro background values.

Summary

The property consists of numerous PGE- Cu- Ni showings in a Nipissing Gabbro sill/ dike (Casson Lake Gabbro), which is 200-500m wide and exposed over an 8 km strike length on the property. The gabbro intrudes folded Gowganda Formation sediments of the Huronian Supergroup, numerous faults and dikes crosscut and disrupt the intrusive. This property and area have had a long exploration history including stripping, trenching, sampling, mapping, and geophysics by junior companies, major companies and prospectors. Assays of highly anomalous PGE occur over >7 km of strike length. The best assays to date are 8.8 g/t PGE and up to 0.8% Cu and 0.28% Ni in channel samples. Geophysics indicates minor to moderate anomalies coincident with showings on the property. Although the properties have received a vast amount of work very little proper geological, structural and geophysical interpretation has been applied. More information is available in the Sedar Harron compilation.

The possibility exists for several low grade (2-5 g/t PGE), moderate tonnage (5-10 Mt.), near surface deposits on this property. This property represents one of the best PGE Cu- Ni occurrences in the region and the only significant advanced property not currently held by or in Joint Venture with a major company.

Observations

Geological and geophysical interpretation on the property has been inadequate at the level required for exploration and development of a property of this size and complexity. PGE Cu Ni mineralization appears to be related to the more dynamically emplaced and contaminated portions of the intrusive. The mineralization is similar to that seen at East Bull Lake and River Valley where a very small amount of sulfide occurs in variable gabbroic rocks. **One significant difference between Nipissing Gb and EBL type mineralization is the much higher Cu- Ni tenors in the former. Mineralization appears to be continuous at anomalous values along the strike of the intrusion.** The stripping on the property is well advanced and exposes wide areas to be sampled and mapped.

Concerns

Concerns on the property are 1) Minor large equipment (drills, excavators, etc.) access problems. Access can be gained for large equipment across the Whitefish River and is not a major problem at least in the winter months. 2) The threat of Provincial Park expansion. Provided the claims are held in good standing they are valid and the right to explore and mine them remains intact as it is with any advanced exploration development.

Recommendations

This property is the best PGE Cu Ni property evaluated thus far by the Regional PGE Project including current Falconbridge claims. **Besides possibly East Bull Lake and the PFN Dana Zone in the River Valley intrusion, no better grade, consistent PGE mineralization, has**

been documented. This property could be fully evaluated in less than a year, through surface mapping, stripping, sampling, geophysics, drilling and data compilation.

Preliminary exploration plan would include:

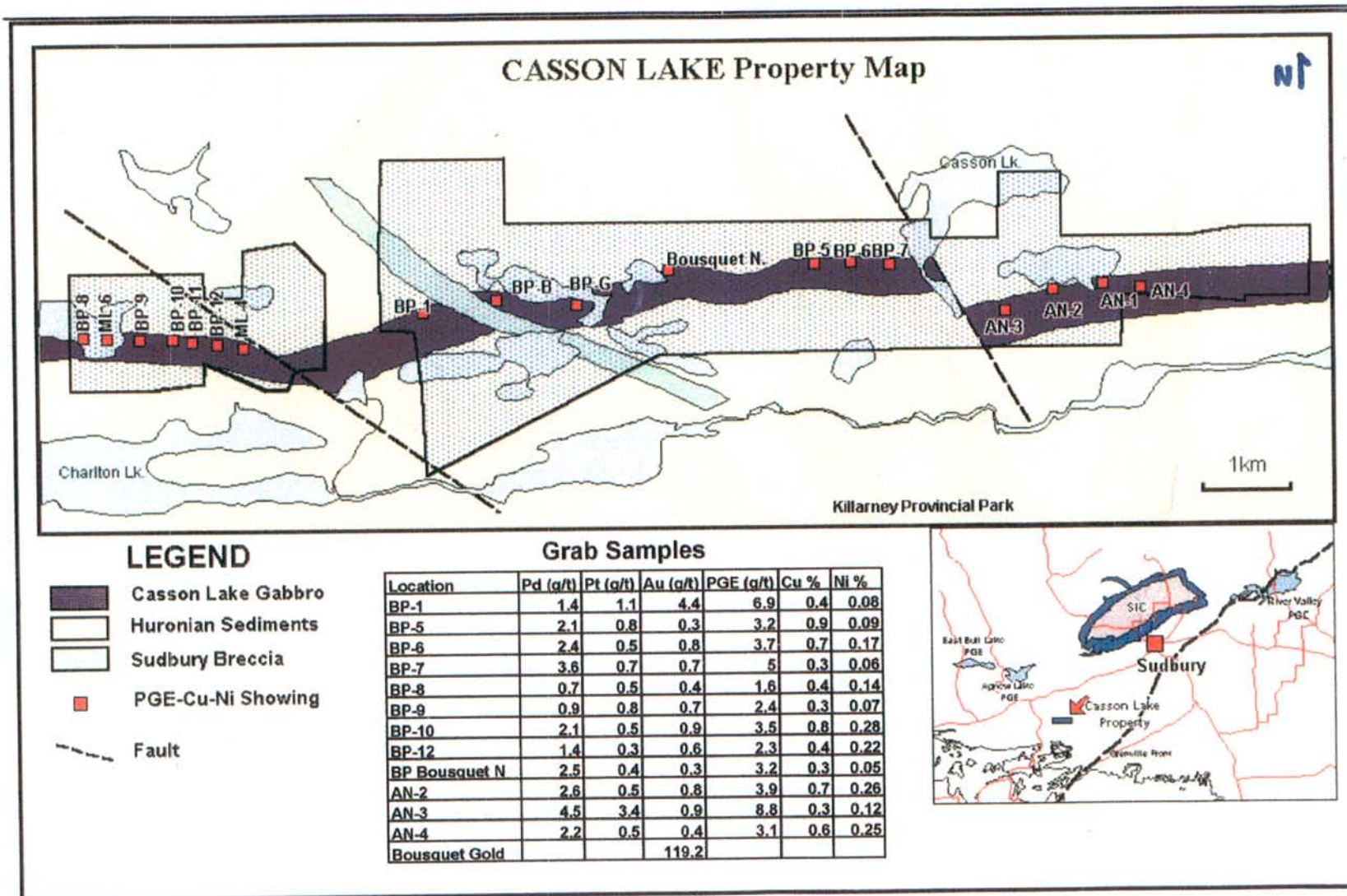
- Compilation and analysis of available data, maps, reports.
- Igneous contact and stratigraphic mapping.
- Detailed gridding and sampling of stripped areas.
- Re-logging of available drill core with sampling where necessary.
- Design and contract ~90km of grid @ 100m spacings.
- Analysis and compilation of geophysics with respect to known mineralization and contacts.
- Grid mapping and sampling.
- Possible, late winter drill program.

By: Joel L. Hrominchuk
Associate Geologist, PGM Exploration
Falconbridge Limited Exploration
P.O. Box 40
Falconbridge, ON, P0M 1S0

October 2003



Casson Lake Intrusion



Casson Lake Property Power Stripping Program
Curtin Twp, Sudbury Mining District

March 14, 2006

MacDonald Mines Exploration Ltd completed a two-phase power-stripping program on the Casson Lake [Cu, Ni, PGE, Au] project beginning in the fall from Sept 2, 2001 that continued until Nov 21, 2001. The second phase or more appropriately, a continuance of the initial stripping program commenced again the following spring from May 24, 2002 and continued until Aug 30, 2002. The purpose of the program was to examine the geometry of varying lithologies that control mineralization in bedrock similar to that found in earlier [1990] drill core by BP Resources Canada. Further evaluation using detailed mapping and systematic channel / panel sampling is recommended.

To accomplish the work program a Cat 225 excavator was hired from Lordan Exploration Services of Whitefish Falls, Ontario. Twelve [12] previous drill sites were cleared of overburden that ranged in depth from less than 0.5m up to 3.5m. A total of 519.5 excavator-operating hours [@ \$70 / hr for a total cost of \$36,365] completed the planned work program.

In several cases, due to the great distance from a reliable water source, it became necessary to relay water into multiple sumps so that excavated sites could then be thoroughly washed with high pressure water supplied through high volume portable Honda transfer pumps into these sumps in combination with one Mark IV Wayjax multi-stage HP delivery pump. Distances of up to 1300m were encountered requiring as many as two separate sumps as well as two transfer pumps. The required pumps, hoses, personnel, ATV's, boat, motor etc. were contracted through Lordan Exploration Services.

Site Excavation

The following sites were cleared of overburden avoiding marketable timber wherever possible. Fire suppression equipment was made ready during the fire season. No accidents or injuries occurred during the work program.

Excavated Site References: BP-1, BP-1 East, BP-B, BP-G, Bousquet North, Bousquet East, BP-5, BP-6, BP-7, An-1, AN-2, AN-3 and Malachite Pit.

Primarily, most exploration trenches targeted unexposed bedrock generally along the orientation path and toward the down-dip direction from the BP drill collars that were host to both geophysical anomalies as well as highly anomalous grab sample locations.

Background Information

From the files of geologist Dave Gamble, BP Resources Canada; thirteen drill holes tested a 3 km long zone of anomalous and elevated PGEs within a sill of Nipissing Gabbro dubbed the "Casson Lake Intrusion".

Seven of these holes, V-74-01 thru V-74-04, and V-74-11 thru V-74-13, focused on the vicinity of old trenches in the 2350 to 2550W an area where surface samples assayed up to 7 *gpt* PGE had been previously encountered.

Considering the widespread distribution of mineralization at surface, the results of the drilling were somewhat disappointing with the highest combined assay of 3.94 *gpt*/ 1m in hole V-74-12.

Stripped Locations: [see compilation map]

BP-1: Location of previous drill holes by BP Resources Canada include V74-01, 74-02, 74-03, 74-04, 74-11, 74-12, and 74-13. Two older drill holes by Mattagami Lake Mines are ML 74-1 & ML 74-2.

BP-1 East: Stripping area took place 16m east of drill collar V74-06 due to low topography.

BP-B Zone: Location of previous drill collar – V74-05

BP- G Zone: Location of previous drill collar – V74-06

Bousquet North: Location of previous drill collar – V74-07

Bousquet East: No previous drill collar -- new trench

BP- 5: Location of previous drill collar – V74-08

BP- 6: Location of previous drill collar – V74-09

BP- 7: Location of previous drill collar – V74-10

AN- 3: Location of previous drill collar – includes 9.89 *gpt* / 0.50cm channel sample + 1280 kilogram bulk sample.

AN- 2: No previous drilling – channel samples + grab samples

AN- 1: [**Malachite Pit**] No previous drilling – channel samples + grab samples

Please Note: MacDonald Mines Exploration Ltd. completed the above work program in this report. However, the work program was not filed and in early 2004 they returned the property to the present property holders due to the then market conditions that lead to their lack of sufficient exploration funding required to continue further exploration on the project. Several difficulties followed that hampered a speedier recovery of the current data presented in this report thus the reason for such late filing.

Summary of Expenditures [see Lordan Exploration Services Rentals & Expenses]

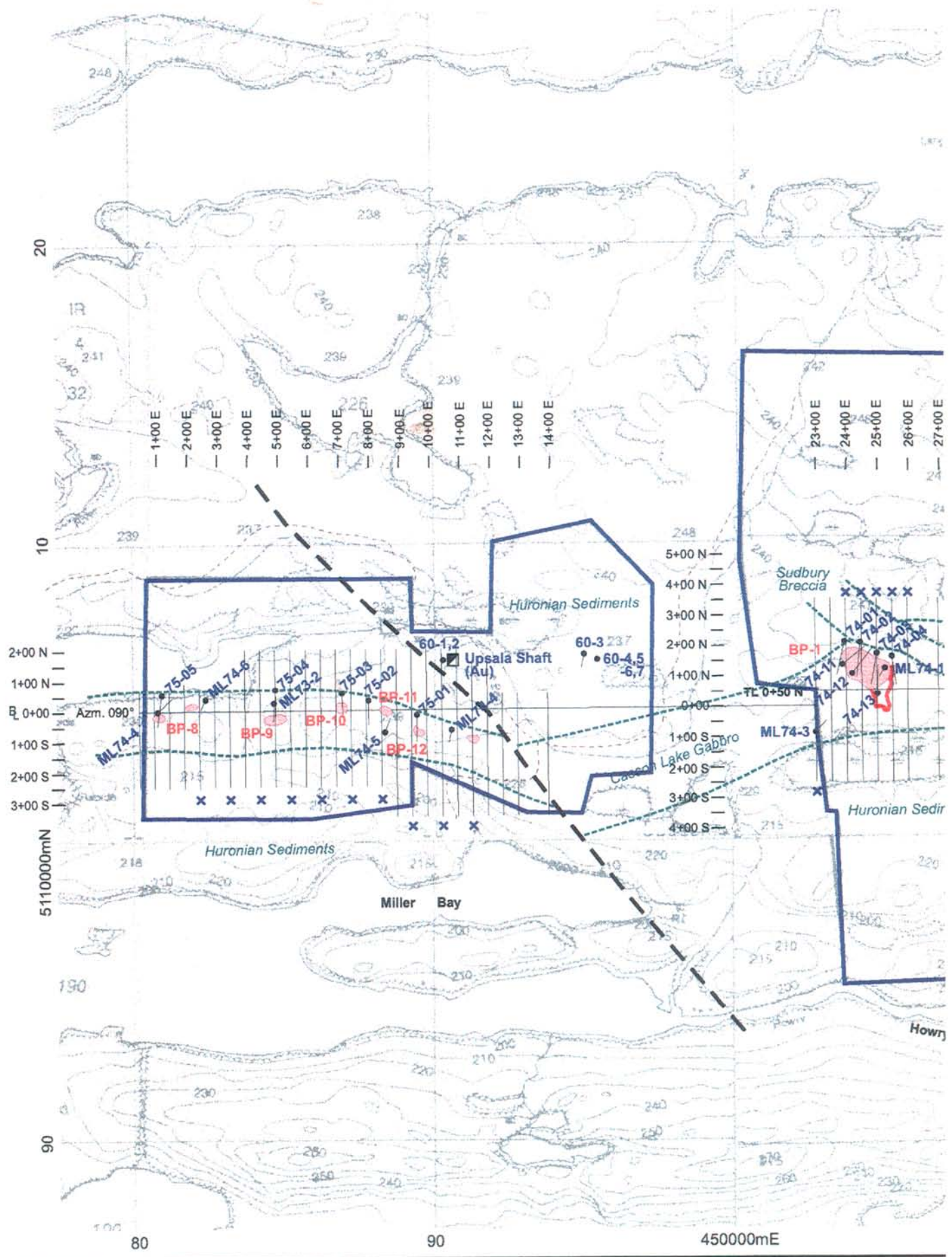
Total expenses for Rentals 2001 [see 2001 Rental Recap]	\$32,277.
Total expenditures for Expenses 2001 [see 2001 Expenses recap]	\$16,933.
Total expenses for Rentals 2002 [see 2002 Rental Recap]	\$24,746.
Total expenditures for Expenses 2002 [see 2002 Expenses Recap]	<u>\$31,983.</u>
Total expenditures:	\$105,939.

Late filing for assessment purposes – reduced by 50%

Total allowable assessment credit. **\$52, 969.50**

Summary of daily Work Report

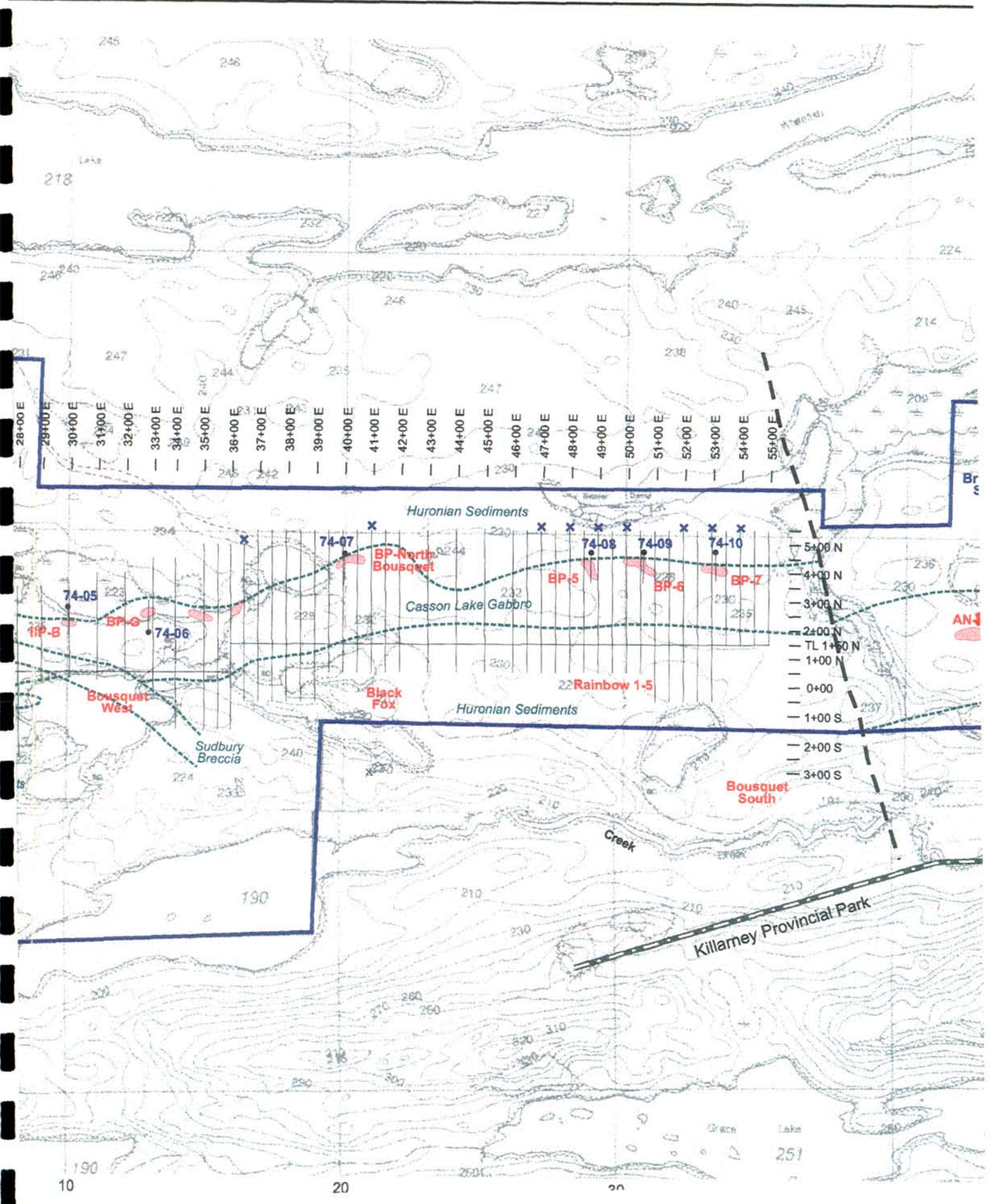
Employees: Bill Cywink May 2002,	28 hrs X \$10 / hr = \$ 280.00
June 2002,	12hrs X \$10 / hr = 120.00
Dave Brunne Sept 2001,	7hrs X \$10 / hr = 70.00
Nov 2001,	16hrs X \$10 / hr = 160.00
Gord Barker Sept, 2001,	112.5hrs X \$ 10 /hr = 1125.00
Oct, 2001,	85.5hrs X \$10 /hr = 875.00
Dan Brunne Sept, 2001,	12 days X \$150 / day = 1800.00
Oct, 2001,	10 days X \$150 / day = 1500.00
May, 2002,	4 days X \$150 / day = 600.00
June, 2002,	20 days X \$150 / day = 3000.00
July, 2002,	18 days X \$150 / day = 2700.00
Aug, 2002,	12 days X \$150 / day = 1800.00
Chris Hansford June, 2002,	38hrs X \$10 / hr = 380.00
July, 2002,	72.5hrs X \$10 /hr = 725.00
Aug, 2002,	48 hrs X \$10 /hr = 480.00
Barry Lendrum May, 2002,	32hrs X 410 / hr = 320.00
June, 2002,	157hrs X \$10 / hr = 1570.00
July, 2002,	128hrs X \$10 /hr = 1280.00
Aug, 2002,	92.5hrs X \$10 / hr = 925.00

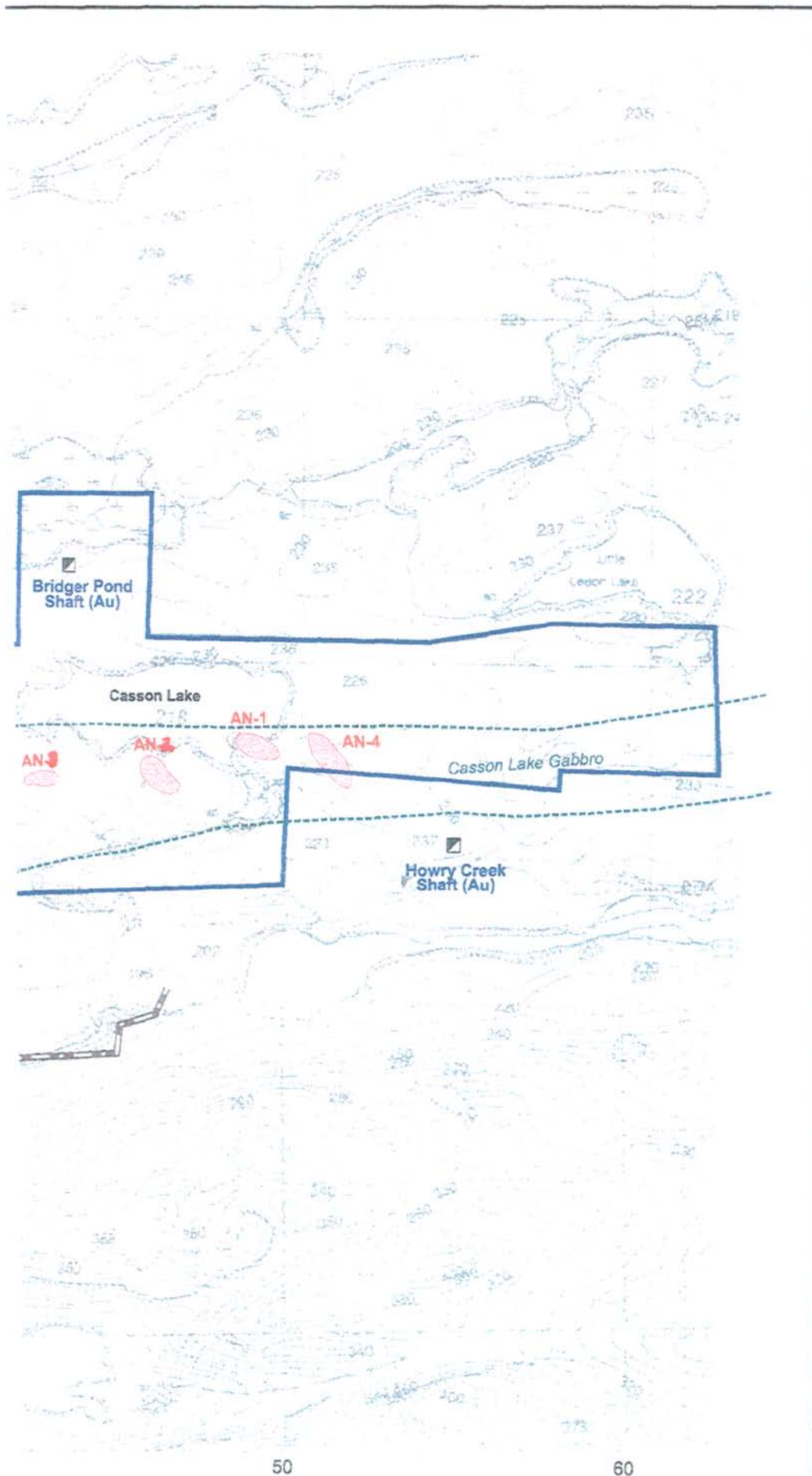








80

90

450000mE





-  BP Grid
-  Grid Lines with IP Coverage
-  74-02 Drillhole
-  AN-3 PGE Showing [Stripped]
-  Geological Contact
-  Fault

1 km

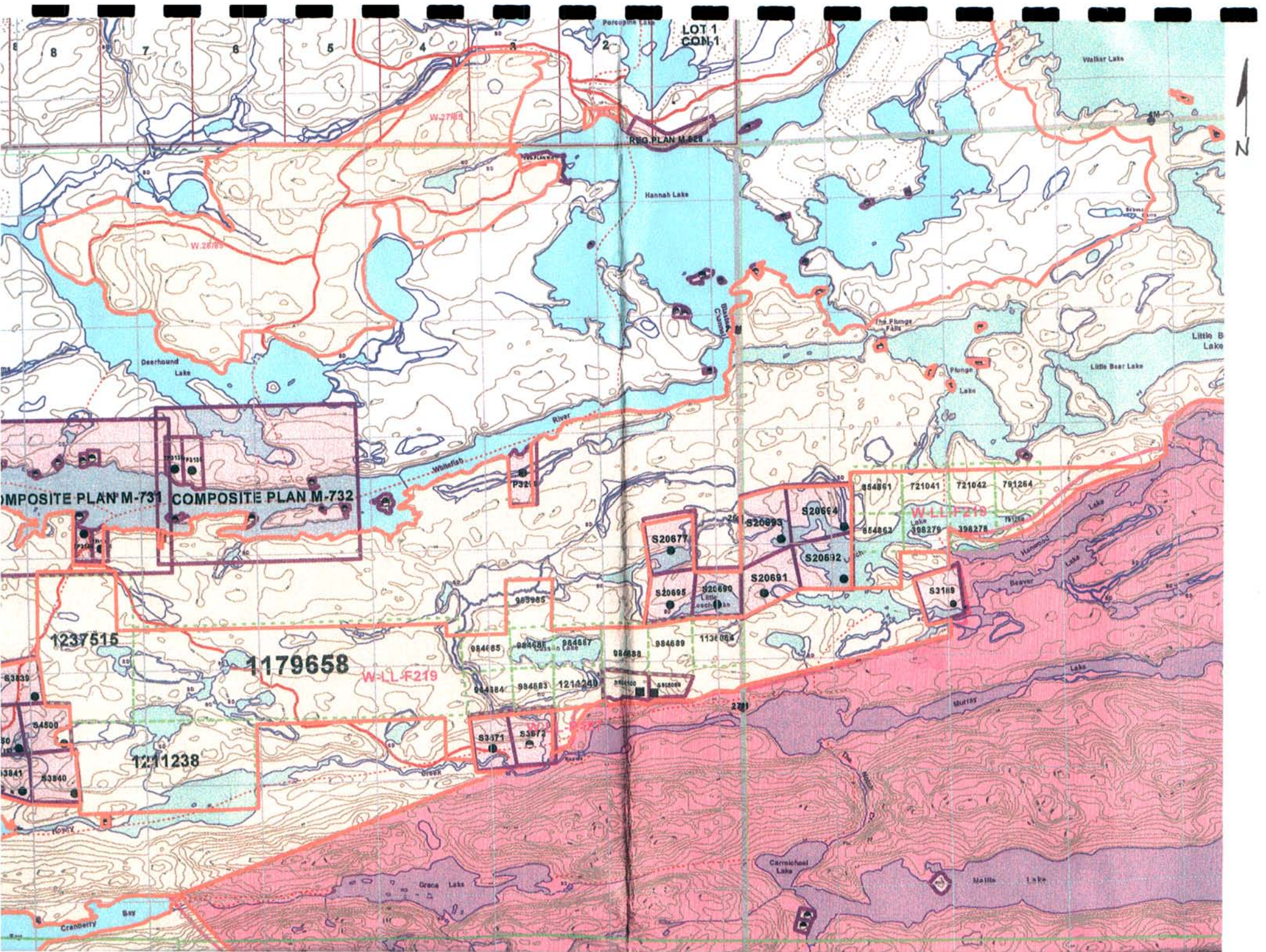
MacDonald Mines Exploration Ltd.

Brunne / Stringer Option
Curtin Township, Ontario
Compilation Map

Figure 5

Sept, 2002

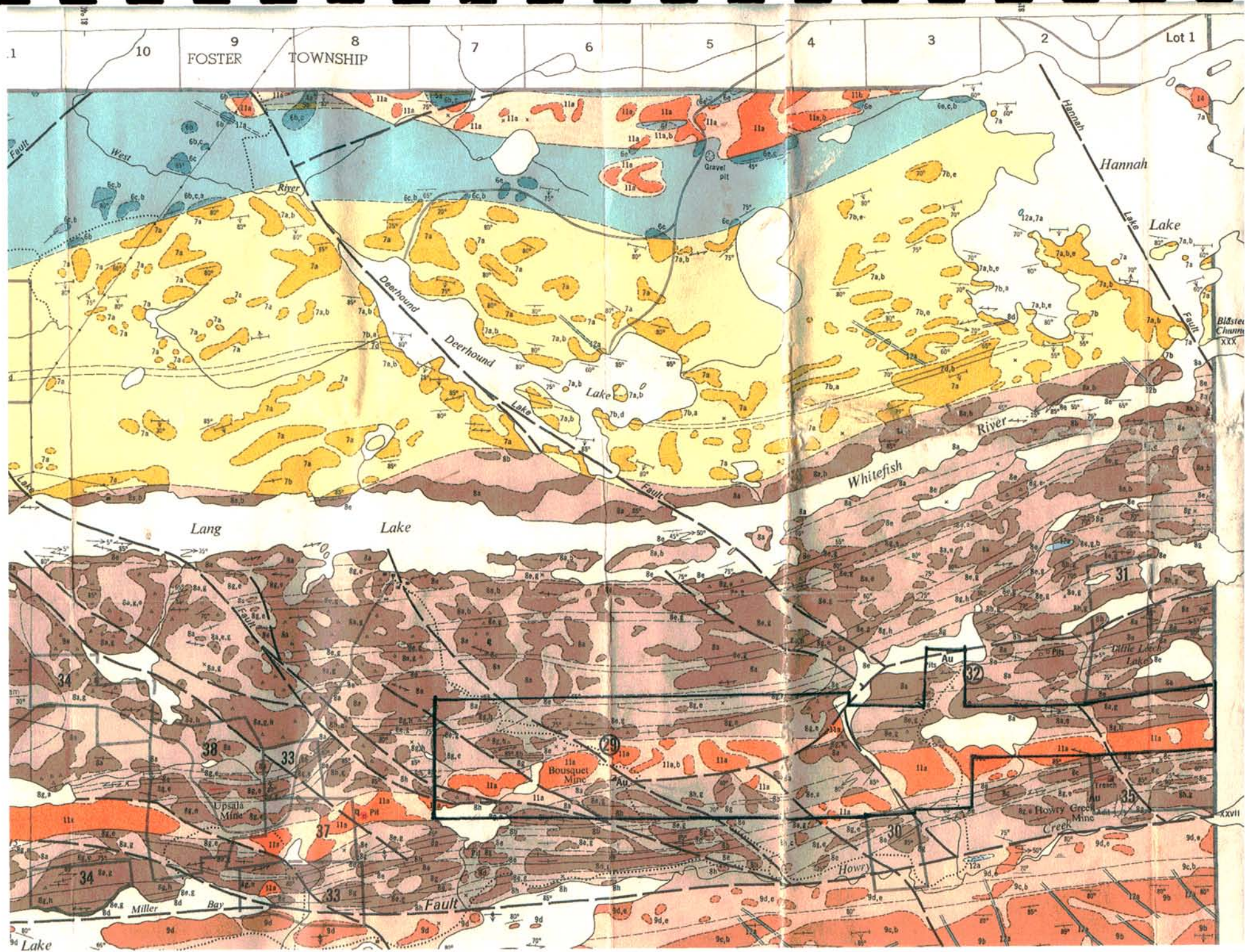
G.A. Harron & Assoc. Inc.



G-3005

CURTIN TWP.

1:20 000



Casson Lake Curtin Twp

LEGEND

CENOZOIC^a

QUATERNARY

PLEISTOCENE AND RECENT

Sand, gravel, clay.

UNCONFORMITY

PRECAMBRIAN^b

LATE PRECAMBRIAN

DIABASE INTRUSIONS

14 Diabase, olivine diabase.

INTRUSIVE CONTACT

MIDDLE PRECAMBRIAN

MONGOWIN PLUTON

13a Trondhjemite.
13b Diorite, granodiorite.
13c Olivine amphibolite.

INTRUSIVE CONTACT

AMPHIBOLITE INTRUSIONS

12a Amphibolite.
12b Porphyritic amphibolite.

INTRUSIVE CONTACT

NIPISSING DIABASE

11a Metagabbro, amphibolite.
11b Pyroxene gabbro.

INTRUSIVE CONTACT

HURONIAN SUPERGROUP

COBALT GROUP

GORDON LAKE FORMATION

10a Argillite.
10b Sandstone.

CONFORMABLE CONTACT

LORRAIN FORMATION

9a Fine-grained cherty sandstone.
9b White, medium-grained sandstone.
9c Ferruginous sandstone.
9d Green feldspathic, micaceous sandstone.
9e Pink feldspathic sandstone.
9f Grey sandstone.
9g Argillite.
9h Quartz and jasper pebble conglomerate.

CONFORMABLE CONTACT

GOWGANDA FORMATION

8 Unsubdivided.
8a Polymictic paraconglomerate, greywacke matrix.
8b Polymictic paraconglomerate, laminated argillite matrix.
8c Polymictic orthoconglomerate, greywacke matrix.
8d Polymictic conglomerate, protoquartzite or subgreywacke matrix.
8e Siltstone, laminated argillite.
8f Greywacke.
8g Biotitic protoquartzite, subgreywacke.
8h Feldspathic protoquartzite, subgreywacke.

CONFORMABLE TO DISCONFORMABLE CONTACT

CONFORMABLE TO DISCONFORMABLE CONTACT

QUIRKE LAKE GROUP

SERPENT FORMATION

7 Unsubdivided.
7a Feldspathic quartzite, protoquartzite.
7b Biotitic protoquartzite, subgreywacke.
7c Polymictic conglomerate.
7d Calcareous siltstone, calcareous argillite, calcareous sandstone.
7e Argillite, siltstone.

CONFORMABLE CONTACT

ESPANOLA FORMATION

6a Limestone, silty limestone.
6b Calcareous siltstone, argillite.
6c Calcareous sandstone.
6d Chert, chert breccia.
6e Scapolite hornfels.
6f Amphibolite.
6g Diopside - idocrase - grossularite skarn.

CONFORMABLE CONTACT

BRUCE FORMATION

5a Polymictic conglomerate, greywacke matrix.
5b Polymictic conglomerate, calcareous greywacke matrix.
5c Polymictic conglomerate, subgreywacke or protoquartzite matrix.
5d Calcareous siltstone, argillite, limestone.
5e Argillite, laminated argillite.
5f Sandstone.

CONFORMABLE CONTACT

HOUGH LAKE GROUP

MISSISSAGI FORMATION

4a Feldspathic sandstone.
4b Biotitic sandstone.
4c Argillite, siltstone.
4d Polymictic conglomerate.

CONFORMABLE CONTACT

PECORS FORMATION

3a Biotitic protoquartzite, subgreywacke.
3b Argillite.

CONFORMABLE CONTACT

RAMSAY LAKE FORMATION

2a Polymictic paraconglomerate, pebbly feldspathic sandstone.

CONFORMABLE CONTACT

ELLIOT LAKE GROUP

McKIM FORMATION

1a Muscovitic and chloritic metapelite.
1b Biotitic metapelite.
1c Plagioclase metapelite.
1d Chloritoid metapelite.
1e Garnet metapelite.
1g Biotitic protoquartzite, subgreywacke.

Breccia.

Au Gold.
clay Clay.
cob Cobaltite.
Cu Copper.
Ni Nickel.
q Quartz.
S Sulphide mineralization.
si Silica.
W Tungsten.

McDonald Mines Explorations Ltd
 Ref: Casson Lake Project

Rentals Jordan

P-1

Date/2001	Item	Total	ATV	Pumps	Hoses
1 Aug 31	ATV 400	5000	5000		
2 31	Boat + Motor (#40.00/DAY)	4000			
3 Sept 1	ATV 400 (#50.00/DAY)	5000	5000		
4 1	Boat + Motor	4000			
5	Robins Pump (#35.00/DAY)	3500		3500	
6	Hoses 1200' (#4.00/100')	4800			4800
7	225 Cat (3hr/70.00)	21000			
8 2	ATV 400	5000	5000		
9	Boat + Motor	4000			
10	Robins Pump	3500		3500	
11	Hoses 1200'	4800			4800
12	225 Cat (8 hrs)	56000			
13 3	ATV 400	5000	5000		
14	Boat + Motor	4000			
15	225 Cat (8 hrs)	56000			
16	Robins Pump	3500		3500	
17	Hoses	4800			4800
18 5	ATV 400	5000	5000		
19	Boat + Motor	4000			
20	225 Cat (8 hrs)	56000			
21	Trailer (#12.00 DAY)	1200			
22 6	ATV 400	5000	5000		
23	Boat + Motor	4000			
24	Trailer	1200			
25	225 Cat (8 hrs)	56000			
26 8	ATV 400	5000	5000		
27	Trailer	1200			
28	Boat + Motor	4000			
29	225 Cat (5 hrs)	35000			
30 11	ATV 400	5000	5000		
31	Trailer	1200			
32	Boat + Motor	4000			
33	Cobra Drill	10000			
34	225 Cat (5 hrs)	35000			
35					
		@ 426700	40000	10500	14400

Explorations

Rentals

Laws	Excavator	Body & Motor	Trailer	Drill	Drill Bits	11	12
		4000					1
		4000					2
							3
							4
							5
	21000						6
		4000					7
							8
							9
	56000						10
		4000					11
							12
	56000						13
		4000					14
							15
							16
							17
							18
	56000	4000					19
							20
			1200				21
		4000					22
			1200				23
	56000						24
							25
			1200				26
		4000					27
	35000						28
							29
			1200				30
		4000					31
							32
				10000			33
	35000						34
							35
315000		32000	4800	10000			

McDonald Mines Explorations Ltd
 Ref: Carson Lake Project

Rentals Jordan

P-2

Date/2001	Item	Total	ATV	Pumps	Hoses
	Brought Forward	4267.00	400.00	105.00	144.00
1	Sept 12 ATV 400	50.00	50.00		
2	ATV 300	50.00	50.00		
3	2 Trailers	24.00			
4	Boat & Motor	40.00			
5	Robins Pump	35.00		35.00	
6	Hoses	48.00			48.00
7	Cobra Drill	100.00			
8	225 Cat (8 hrs)	560.00			
9	13 ATV 400	50.00	50.00		
10	ATV 300	50.00	50.00		
11	2 Trailers	24.00			
12	225 Cat (2 hrs)	140.00			
13	Boat & Motor	40.00			
14	15 ATV 300	50.00	50.00		
15	ATV 400	50.00	50.00		
16	2 Trailers	24.00			
17	Boat & Motor	40.00			
18	Cobra Drill	100.00			
19	Robins Pump	35.00		35.00	
20	Hoses	48.00			48.00
21	225 Cat (8 hrs)	560.00			
22	16 ATV 400	50.00	50.00		
23	ATV 300	50.00	50.00		
24	2 Trailers	24.00			
25	Boat & Motor	30.00			
26	Robins Pump	35.00		35.00	
27	Hoses	48.00			48.00
28	Cobra Drill	100.00			
29	Wayjax Pump	70.00		70.00	
30	225 Cat (5 hrs)	350.00			
31	18 ATV 400	50.00	50.00		
32	ATV 300	50.00	50.00		
33	2 Trailers	24.00			
34	Boat & Motor	40.00			
35					
	@	7306.00	900.00	280.00	288.00

111 Donald Thomas Explorations Ltd
Ref: Casson Lake Project

Rentals Jordan

Date/2001	Item	Total	ATV	Pumps	Hoses
	Brought Forward.	730600	90000	28000	28800
Sept 18	Robins Pump	3500		3500	
	Wayfar Pump	7000		7000	
	Hoses	4800			4800
	225 Cat (8 hrs)	56000			
20	ATV 400	5000	5000		
	ATV 300	5000	5000		
	2 Trailers	2400			
	Boat + Motor	4000			
	Cobra Drill	10000			
	Wayfar Pump	7000	7000		
	Hoses	4800			4800
	225 Cat (8 hrs)	56000			
21	ATV 400	5000	5000		
	Trailer	1200			
	Boat + Motor	4000			
	Honda Pump	3500		3500	
	Hoses	4800			4800
	225 Cat (6 hrs)	42000			
22	ATV 400	5000	5000		
	ATV 300	5000	5000		
	2 Trailers	2400			
	Boat + Motor	4000			
	Honda Pump	3500		3500	
	Hoses	4800			4800
	Husky Saw	4000			
	225 Cat (7 hrs)	49000			
23	ATV 400	5000	5000		
	ATV 300	5000	5000		
	2 Trailers	2400			
	Boat + Motor	4000			
	Honda Pump	3500		3500	
	Hoses	4800			4800
	Husky Saw	4000			
	225 Cat (5 hrs)	35000			
		@ 1098000	132000	49000	52800

Explorations

Rentals

Saws	Excavator	Boat/Motor	Trailer	Drill	Drill Bits	11	12
	476000	51000	16800	40000			
	56000						
			2400				
		4000					
				10000			
	56000						
			1200				
		4000					
	42000						
			2400				
		4000					
4000							
	49000						
			2400				
		4000					
4000							
	35000						
8000	714000	67000	25200	50000			

McDonald Mines Explorations Ltd
 Ref: Casson Lake Project

Rentals Jordan P4

Date/2001	Item	Total	ATV	Pumps	Hoses
	Brought Forward	1098000	132000	49000	52800
25	ATV 400	5000	5000		
	ATV 300	5000	5000		
	Boat Motor	4000			
26	ATV 400	5000	5000		
	ATV 300	5000	5000		
	ATV	5000	5000		
	Boat + Motor	4000			
	Trailer	1200			
27	ATV 300	5000	5000		
	Boat + Motor	4000			
	Robins Pump	3500		3500	
	Honda Pump	3500		3500	
	Hoses	4800			4800
	Husky Rock saw	4000			
	225 Cat (8hrs)	56000			
	Trailer	1200			
	ATV 400	5000	5000		
28	ATV 400	5000	5000		
	ATV 300	5000	5000		
	Trailer	1200			
	Boat + Motor	4000			
	225 Cat (3hrs)	21000			
29	ATV 400	5000	5000		
	Trailer	1200			
	Boat + Motor	4000			
27	Explosives	47000			
		© 1312600	182000	56000	57600

Explorations

Rentals

Saws, Excavator		Boats, Motor Trailers		Drill	Drill Bits	Misc	12
8000	714000	67000	25200	50000			1
		4000					2
							3
							4
							5
							6
		4000					7
			1200				8
							9
		4000					10
							11
							12
							13
4000							14
							15
	56000						16
			1200				17
							18
							19
							20
			1200				21
		4000					22
	21000						23
							24
			1200				25
		4000					26
						47000	27
12000	791000	87000	30000	50000		47000	28
							29
							30
							31
							32
							33
							34
							35

Date/2001	Item	Total	Fuel, Oil	Rentals	Wages
	Brought Forward Sept				
1 Sept 29	Noco Petroleum	2700	2700		
2 29	Greyhound (SAMPLES)	5267			
3 Oct 2	Shell	3869	3869		
4 2	Shell	4000	4000		
5	Shell	7100	7100		
6	Pete Starcevic (8 hrs)	8000			8000
7	Dave Brunne (8 hrs)	8000			8000
8 3	Pete Starcevic (8 hrs)	8000			8000
9	Dave Brunne (8 hrs)	8000			8000
10	Shell	6400	6400		
11 4	Pete Starcevic (8 hrs)	8000			8000
12 5	Shell	7925	7925		
13	Pete Starcevic (ATV 3 day)	15000		15000	
14 4	Toromont Cat (TRACK BOLTS) ✓	3347			
15	Gordon's Office Supplies	391			
16 6	Manitoulin Fuels (D-Fuel-Oil)	26073 ✓	26073		
17	Turn's + Co. (clamp) ✓	816			
18	Gordon Barker (39.5 hrs)	39500			39500
19 10	Shell	7676	7676		
20 11	Post Office	1070			
21 11	Shell	9700	9700		
22 11	Dave's Sm. Engines (Diamond)	131963			
23	Dave's Sm. Engines (Blades)	68356			
24	Dave's Sm. Engines (Delivered)	68356			
25	Gordon Barker (8.5 hrs)	8500			8500
26 - 12	Lovlace Welding ✓	57500			
27	Gordon Barker (8.5 hrs)	8500			8500
28 13	Manitoulin Fuels (D Fuel + Oil)	38317 ✓	38317		
29	Bouillon	2000	2000		
30	Toromont Cat (seals & filter) ✓	4425			
31	Gordon Barker (8 hrs)	8000			8000
32 14	Gordon Barker (6 hrs)	6000			6000
33	Bushwacker (spring) ✓	2128			
34 16	Gordon Barker (8.5 hrs)	8500			8500
35 17	Gordon Barker (8.5 hrs)	8500			8500
	Shell	15850	15850		
		549373	131610	15000	127500

Explorations

Expenses

P1

Shipping Misc		G.I.T.		Debit	Uua	Total	
7	8	9	10	11	12		
						3492955	
			216	2700		490255	1
5267			345		5267	484988	2
			242	3869		481119	3
			262	4000		477119	4
			464	7100		470019	5
				8000		462019	6
				8000		454019	7
				8000		446019	8
				8000		438019	9
			419	6400		431619	10
				8000		423619	11
			314	7925		415694	12
				15000		400694	13
3347			284		3347	397347	14
391			24	391		396956	15
			1666	26073		370883	16
816			50	816		370067	17
				39500		330567	18
			502	7676		322891	19
1070			70	1070		321821	20
			635	9700		312121	21
	131963		8033		131963	180158	22
68356			4161		68356	111802	23
				8500		103302	24
	57500		3500			48502	25
				8500		37302	26
			2408	39317		OD. - 1015	27
			131	2000		3015	28
	4425		269		4425	7440	29
				8000		15440	30
				6000		21440	31
	2128		130	2128		23568	32
						32068	33
						40568	34
			1268	15850		56418	35
74693	200570		25313				

Date/2001	Item	Total	Fuel, Oil	Rentals	Wages
	Brought Forward	549373	131610	15000	127500
2 Oct 20	Toromont ✓	36806			
3	Canadian Tire ✓	5224			
4	Shell	10158	10158		
5	Bardon ✓	6348	6348		
6 22	Gordon Barker (4hrs)	4000			4000
7 23	Gordon Barker (4hrs)	4000			4000
8	Shell	3900	3900		
9 24	Toromont Cat ✓	32105			
10 25	Shell	1838	1838		
11 26	Bardon Auto ✓	6168			
12 30	Toromont Cat ✓	3930			
13 31	Shell	5000	5000		
14		ⓐ 668850	158854	15000	135500
15					
16					
17					
18					
19					
20					
21					
22					
23					
24					
25					
26					
27					
28					
29					
30					
31					
32					
33					
34					
35					

Explorations

Expenses

Shipping Misc		H.T.	Debit	Used	Total
746.93	200570	25313			56418
	36806	2240		36806	93224
	5224	318	5224		98448
		658	10158		108606
		386		6348	114954
			4000		118954
			4000		122954
		255	3900		126854
	32105	1954		32105	158959
		120	1838		160797
	6168	375		6168	166965
	3930	239			170895
		327			179825
746.93	284803	32185		over draft.	179825
					175895

MacDonald Mines Explorations Ltd
 Ref: Casson Lake Project

Pa #1
 Rentals Jordan

Date/2001	Item	Total	ATV	Pumps	Hoses
1 Oct 2	ATV 400	5000	5000		
2	ATV 300	5000	5000		
3	ATV Pete pd	5000	5000		
4	Boat + Motor	4000			
5	Hoses	4800			4800
6	2 Trailers	2400			
7	225 Cat 6 hrs	42000			
8 3	ATV 400	5000	5000		
9	ATV 300	5000	5000		
10	ATV Pete pd	5000	5000		
11	Boat + Motor	4000			
12	Hoses	4800			4800
13	2 Trailers	2400			
14	Excavator	21000			
15 4	ATV 400	5000	5000		
16	ATV 300	5000	5000		
17	ATV Pete pd	5000	5000		
18	Boat + Motor	4000			
19	Husky saw	4000			
20	Honda pump	3500		3500	
21	hoses	4800			4800
22	Excavator (6 hrs)	42000			
23 5	ATV 400	5000	500		
24	ATV 300	5000	5000		
25	Hoses	4800			4800
26	Boat + Motor	4000			
27	225 Cat (5 hrs)	35000			
28 6	ATV 400	5000	5000		
29	ATV 300	5000	5000		
30	Boat + Motor	4000			
31	Wayfax Pump	7000		7000	
32	Hoses	4800			4800
33	Excavator (8 hrs)	56000			
34	2 Trailers	2400			
35		@ 326700	65000	10500	24000

Exploration:

Rentals

Saws	Excavator	Boats/Motor	Trailer	Drill	Drill Bits	11	12	
								1
								2
								3
		4000						4
								5
				2400				6
	42000							7
								8
								9
								10
		4000						11
								12
				2400				13
	21000							14
								15
								16
								17
		4000						18
4000								19
								20
								21
	42000							22
								23
								24
								25
		4000						26
	35000							27
								28
								29
		4000						30
								31
								32
	56000							33
				2400				34
4000	196000	20000		7200				35

MacDonald Mines Explorations Ltd
 Ref: Casson Lake Project

Rentals Jordan K-2

Date/2001	Item	Total	ATV	Pump	Hoses
1 Oct 6	Brought Forward	326700	65000	10500	24000
2 9	ATV 400	5000	5000		
3	Trailer	1200			
4	Hoses	4800			4800
5	Boat + Motor	4000			
6	Excavator (3 hrs)	21000			
7 10	ATV 400	5000	5000		
8	Trailer	1200			
9	Boat + Motor	4000			
10	Wayjax	7000		7000	
11	Hoses	4800			4800
12	Excavator (5 hrs)	35000			
13 11	ATV 400	5000	5000		
14	ATV 300	5000	5000		
15	Boat + Motor	4000			
16	Trailer	1200			
17	Wayjax Pump	7000		7000	
18	Robins Pump	3500		3500	
19	Hoses	4800			4800
20	Excavator (8 hrs)	56000			
21 12	ATV 400	5000	5000		
22	Trailer	1200			
23	Boat + Motor	4000			
24	Wayjax Pump	7000		7000	
25	Robins Pump	3500		3500	
26	Hoses	4800			4800
27 16	ATV 400	5000	5000		
28	ATV 300	5000	5000		
29	1 Trailer	1200			
30	Wayjax Pump	7000		7000	
31	Robins Pump	3500		3500	
32	Hoses	4800			4800
33	Boat + Motor	4000			
34	Excavator (8 hrs)	56000			
35		618200	100000	49000	48000

Explorations

Rentals

Saws	Excavators	Boats	Motor	Trailer	Drill	Drill Bits	11	12
4000	196000		20000	7200				
				1200				
			4000					
	21000							
			4000	1200				
	35000							
			4000					
				1200				
	56000							
			4000	1200				
				1200				
			4000					
	56000							
4000	364000		40000	13200				

11/1 ac Donald Mines & Explorations Ltd
 Ref: Casson Lake Project

Rentals Jordan P3

Date/2001	Item	Total	ATV	Pumps	Hoses
1 Oct 16	Brought forward	618200	100000	149000	48000
2 17	ATV 400	5000	5000		
3	ATV 300	5000	5000		
4	1 Trailer	1200			
5	Wayfax Pump	7000		7000	
6	Robins Pump	3500		3500	
7	Hoses	4800			4800
8	Boat & Motor	4000			
9	Excavator (7 hrs)	49000			
10 18	ATV 400	5000	5000		
11	ATV 300	5000	5000		
12	2 Trailers	2400			
13	Boat & Motor	4000			
14	Wayfax Pump	7000		7000	
15	Robins Pump	3500		3500	
16	Hoses	4800			4800
17	Honda Pump	3500		3500	
18	Excavator (7 hrs)	49000			
19 19	ATV 400	5000	5000		
20	ATV 300	5000	5000		
21	2 Trailers	2400			
22	Wayfax Pump	7000		7000	
23	Robins Pump	3500		3500	
24	Honda Pump	3500		3500	
25	Hoses	4800			4800
26	Boat & Motor	4000			
27	Excavator (3 hrs)	21000			
28 20	ATV 400	5000	5000		
29	Wayfax Pump	7000		7000	
30	Robins Pump	3500		3500	
31	Honda Pump	3500		3500	
32	Hoses	4800			4800
33	Boat & Motor	4000			
34	Excavator (2 1/2 hrs)	17500			
35		@ 883400	135000	101500	67200

Explorations

Rentals

Saws	Excavator	Body Motor	Trailer	Drill	Drill Bits	11	12
4500	364000	40000	13200				
			1200				
	49000	4000					
		4000	2400				
	49000						
			2400				
	21000	4000					
		4000					
	17500						
4000	500500	56000	19200				

Mac Donald Mines + Explorations Ltd
 Ref: Casson Lake Project

Rentals Jordan P4

Date/2001	Item	Total	ATV	Pumps	Hoses
1 Oct 20	Brought forward	883400	135000	101500	67200
2 21	ATV 400	5000	5000		
3	Boat + Motor	4000			
4	Trailer	1200			
5	Excavator (3 hrs)	21000			
6 22	ATV 400	5000	5000		
7	ATV 300	5000	5000		
8	1 Trailer	1200			
9	Boat + Motor	4000			
10 23	ATV 400	5000	5000		
11	ATV 300	5000	5000		
12	2 Trailers	2400			
13	Excavator (2 hrs)	14000			
14	Hoses	4800			4800
15	Wayfax Pump	7000		7000	
16 24	ATV 400	5000	5000		
17	1 Trailer	1200			
18	Boat + Motor	4000			
19	Wayfax Pump	7000		7000	
20	Robins Pump	3500		3500	
21	Honda Pump	3500		3500	
22	Hoses	4800			4800
23	Excavator (2 hrs)	14000			
24 25	ATV 400	5000	5000		
25	1 Trailer	1200			
26	Boat + Motor	4000			
27	Wayfax Pump	7000		7000	
28	Robins Pump	3500		3500	
29	Honda Pump	3500		3500	
30	Hoses	4800			4800
31	Excavator (2 hrs)	14000			
32 26	ATV 400	5000	5000		
33	ATV 300	5000	5000		
34	Boat + Motor	4000			
35	Hoses	4800			4800
		@ 1072800	180000	136500	86400

Explorations

Rentals

PH
FR

Saws	Excavator	Body/Motor	Trailer	Drill	Drill Bits	11	12
4000	500500	56000	19200				
		4000	1200				
	21000						
		4000	1200				
			2400				
	14000						
		4000	1200				
	14000						
		4000	1200				
	14000						
		4000					
	14000						
		4000					
4000	563500	76000	26400				

MacDonald Mines & Exploration Ltd
 Ref: Casson Lake Project

Rentals Jordan P5

Date/2001	Item	Total	ATV	Pumps	Hoses
1 Oct 26	Brought Forward	1072800	180000	136500	86480
2	Excavator (2 hrs)	14000			
3 27	ATV 400	5000	5000		
4	ATV 300	5000	5000		
5	ATV Pet.	5000	5000		
6	Boat & Motor	4000			
7	Hoses	4800			4800
8	Excavator (2 hrs)	14000			
9 30	ATV 400	5000	5000		
10	1 Trailer	1200			
11	Boat & Motor	4000			
12	Hoses	4800			4800
13	Excavator (5 hrs)	35000			
14 31	ATV 400	5000	5000		
15	Trailer	1200			
16	Boat & Motor	4000			
17	Hoses	4800			4800
18	Excavator (8 hrs)	56000			
19		@ 1245600	205000	136500	100800

Explorations

Rentals

Saws	Excavator	Boat & Motor	Trailer	Drill	Drill Bits	11	12
4000	563500 14000	76000	26400				
		4000					
	14000						
			1200				
		4000					
	35000						
			1200				
		4000					
	56000						
4000	682500	88000	28800				

Mac Donald Mines & Explorations Ltd
 Ref: Casson Lake Project

Expenses Jordan

P1

Date/2001	Item	Total	Fuel	Oil	Rental	Wages
1 Nov 2	Manitouline Fuels (D-Fuel)	18584	✓	18584		
2	Toromont Cat	28661	✓			
3	Noco Express	3700		3700		
4	Shell	13266		13266		
5	10 Manitouline Fuels (D-Fuel)	28160	✓	28160		
6	11 Pete Starcevic (9 hrs)	9000				9000
7	11 Gordon's Office Supplies	483				
8	12 Shell	1301		1301		
9	14 Shell	9800		9800		
10	17 Manitouline Fuels (D-Fuel)	27426	✓	27426		
11	17 Deposit \$3000.00					
12	22 Deposit \$4000.00					
13	23 Brown's Concrete (skids)	9630				
14	Canadian Tire (tie down - shovel)	8954				
15	Stop & Shop	6500		6500		
16	21 Dan Brunne (8 hrs + mileage)	20000				20000
17	Lunch for 3	1769				
18	23 Snow plowing Larry Bond (adv)	10000				
19	25 Canadian Tire (house)	10408				
20	Canadian Tire (house)	13780				
21	Pete Starcevic 11 1/2 hrs 24-25	11550				11550
22	Pete Starcevic 174 Km x 30¢	7140				7140
23	Pete Starcevic (Dryer - house)	5000				
24	27 UPA (D-Oil)	12580	✓	12580		
25	Beaver Lumber (6-Keys)	894				
26	29 Toromont	14420	✓			
27		@ 2273006		121317		47690
28						
29						
30						
31						
32						
33						
34						
35						

Explorations

Expenses

Shipping	Misc			G.T.	Debit	Usa	Total	
							124105	
				1131	18584		105521	1
	28661			1745		28661	76860	2
				242	3700		73160	3
				700	13266		59894	4
				1779		28160	31734	5
						9000	22734	6
	483			34	483		22251	7
						1301	20950	8
				641	9800		11150	9
				1669	27426		-16276	10
							-16276	11
							383724	12
	9630			630		9630	374094	13
	8954			545	8954		364464	14
				520		6500	357964	15
						20000	337964	16
	1769			141	1769		336195	17
	10000				10000		326195	18
	10408			634	10408		315787	19
	13780			1797		13780	302007	20
						11550	290457	21
						7140	283317	22
	5000					5000	278317	23
				881		12580	265737	24
	894			54	894		264843	25
	14420			878		14420	250423	26
	103999			14021				27
								28
								29
								30
								31
								32
								33
								34
								35

Date/2001	Item	Total	ATV	Pumps	Hoses
1 Nov 1	ATV 400	5000	5000		
2	Trailer	1200			
3	Boat & Motor	4000			
4	Excavator (7 hrs)	49000			
5 4	ATV 400	5000	5000		
6	Trailer	1200			
7	Boat & Motor	4000			
8	Excavator (5 hrs)	35000			
9 9	ATV 400	5000	5000		
10	Trailer	1200			
11	Boat & Motor	4000			
12	Excavator (6 hrs)	42000			
13 10	ATV 400	5000	5000		
14	Trailer	1200			
15	Boat & Motor	4000			
16	Excavator (4 hrs)	28000			
17 11	ATV 400	5000	5000		
18	Trailer	1200			
19	Boat & Motor	4000			
20	Wayfax pump	7000		7000	
21	Hoses	4800			4800
22	Excavator (8 hrs)	56000			
23 14	ATV 400	5000	5000		
24	Trailer	1200			
25	Hoses	4800			4800
26	Honda Pump	3500		3500	
27	Boat & Motor	4000			
28	Excavator (8 hrs)	56000			
29 15	ATV 400	5000	5000		
30	Trailer	1200			
31	Boat & Motor	4000			
32	Excavator (8 hrs)	56000			
33 16	ATV 400	5000	5000		
34	Trailer	1200			
35	Boat & Motor	4000			
		@ 423700	40000	10500	9600

Explorations

Rentals

Rd

Saws	Excavator	Boat/Motor	Trailer	Drill	Drill Bits	11	12
			1200				
	49000	4000					
			1200				
	35000	4000					
			1200				
	42000	4000					
			1200				
	28000	4000					
			1200				
	56000	4000					
			1200				
	56000	4000					
			1200				
	56000	4000					
			1200				
	322000	32000	9600				

Date/2001	Item	Total	ATV	Pump	Hoses
1 Nov 16	Brought Forward	423700	40000	10500	9600
2 16	Excavator (8 hrs)	56000			
3 18	ATV 400	5000	5000		
4	Trailer	1200			
5	Boat & Motor	4000			
6	Excavator (7 hrs)	49000			
7 19	ATV 400	5000	5000		
8	Trailer	1200			
9	Boat & Motor	4000			
10	Excavator (7 hrs)	49000			
11 20	ATV 400	5000	5000		
12	Trailer	1200			
13	Boat & Motor	4000			
14	Excavator (7 hrs)	49000			
15 21	ATV 400	5000	5000		
16	Trailer	1200			
17	Boat & Motor	4000			
18	Excavator (7 hrs)	49000			
19		ⓐ 716500	60000	10500	9600
20					
21					
22					
23					
24					
25					
26					
27					
28					
29					
30					
31					
32					
33					
34					
35					

Explorations

Rentals

Saws	Excavator	Back Motor	Trailer	Drill	Drill Bits	11	12
	322000	32000	9600				
	56000						
			1200				
		4000					
	49000						
			1200				
		4000					
	49000						
			1200				
		4000					
	49000						
			1200				
		4000					
	49000						
	574000	48000	14400				

Date / 2002	Item	Total	ATV	Pumps	Hoses
1 May 1/01	ATV 400	5000	5000		
2	Boat + Motor	4000			
3 6	ATV 400	5000	5000		
4	Trailer	1200			
5	Boat + Motor	4000			
6	Wayjax	7000		7000	
7	Hoses	4800			4800
8 7	ATV 400	5000	5000		
9	Boat + Motor	4000			
10	Wayjax	7000		7000	
11	Hoses	4800			4800
12 9	ATV 400	5000	5000		
13	Boat + Motor	4000			
14	Wayjax	7000		7000	
15	Hoses	4800			4800
16	Chainsaw	2500			
17 16	ATV 400	5000	5000		
18	ATV 300	5000	5000		
19	Boat + Motor	4000			
20	Wayjax	7000		7000	
21	Hoses	4800			4800
22	Trailer	1200			
23 18	ATV 400	5000	5000		
24	ATV 300	5000	5000		
25	Boat + Motor	4000			
26 19	ATV 400	5000	5000		
27	ATV 300	5000	5000		
28	Boat + Motor	4000			
29 23	ATV 400	5000	5000		
30	ATV 300	5000	5000		
31	Boat + Motor	4000			
32	Wayjax	7000		7000	
33	Hoses	4800			4800
34					
35		@ 155900	60000	35000	24000

Mac Donald Mines & Explorations Ltd
 Ref: Casson Lake Project

1-7
 Jordan
 3

Date / 2002	Item	Total	ATV	Pump	Hoses
	Brought Forward	1559.00	600.00	350.00	240.00
May 24	ATV 400	50.00	50.00		
	ATV 300	50.00	50.00		
	Boat & Motor	40.00			
	Wayjax	70.00		70.00	
	Hoses	48.00			
	Trailer	12.00			
25	ATV 400	50.00	50.00		
	ATV 300	50.00	50.00		
	Boat & Motor	40.00			
	Wayjax	70.00		70.00	
	Hoses	48.00			
	Excavator 3 hrs	210.00			
26	ATV 400	50.00	50.00		
	ATV 300	50.00	50.00		
	Boat & Motor	40.00			
	Wayjax	70.00		70.00	
	Hoses	48.00			48.00
	Excavator 4 hrs	280.00			
28	ATV 400	50.00	50.00		
	ATV 300	50.00	50.00		
	Boat & Motor	40.00			
	Wayjax	70.00		70.00	
	Hoses	48.00			48.00
	Trailer	12.00			
	Excavator 7 hrs	490.00			
29	ATV 400	50.00	50.00		
	ATV 300	50.00	50.00		
	Boat & Motor	40.00			
	Trailer	12.00			
	Wayjax	70.00		70.00	
	Hoses	48.00			48.00
	Excavator 8 hrs	560.00			
		@ 4425.00	1100.00	700.00	480.00

MacDonald Mines & Explorations Ltd
 Ref Casson Lake Project

P-3

Lordan

5

Date/2002	Item	Total	ATV	Pumps	Hoses
	Brought Forward	442500	110000	70000	48000
31 May 30	ATV 400	5000	5000		
	ATV 300	5000	5000		
	Boat & Motor	4000			
	Trailer	1200			
	Robins Pump	3500		3500	
	Hoses	4800			4800
	Rock saw	6000			
	Excavator 3 hrs	21000			
31	ATV 400	5000	5000		
	ATV 300	5000	5000		
	Trailer	1200			
	Boat & Motor	4000			
	Wayax	7000		7000	
	Hoses	4800			4800
	Robins	3500		3500	
	Excavator (6 hrs)	42000			
		@ 565500	130000	84000	57600

Exploration

4

Saws	Excavator	Combs, Motor	Trailer	Drill	Drill Bits	11	12
2500		32000	2400				
		4000					
			1200				
	21000						
	28000						
		4000					
	49000		1200				
		4000					
			1200				
	56000						
2500	154000	52000	6000				

P-3

Explorations

6

Saws Excavator	Boards Motor	Trailer	Drill	Drill Bits			
2500	154000	52000	6000				1
							2
							3
							4
		4000					5
			1200				6
							7
6000							8
	21000						9
							10
							11
							12
			1200				13
		4000					14
							15
							16
	42000						17
							18
							19
2500	217000	60000	8400				20
							21
							22
							23
							24
							25
							26
							27
							28
							29
							30
							31
							32
							33
							34
							35

Mac Donald Mines & Explorations Ltd
 Ref: Casson Lake Project

Rentals

London

P-1

7

Date/2002	Item	Total	ATV	Pumps	Hours
June 1	ATV 400	5000	5000		
	ATV 300	5000	5000		
	Boat & Motor	4000			
	Trailer	1200			
	Wayjax	7000		7000	
	Robins	3500		3500	
	Hoses	4800			4800
	Excavator 5 hrs	35000			
4	ATV 400	5000	5000		
	ATV 300	5000	5000		
	Boat & Motor	4000			
	Trailer	1200			
	Wayjax	7000		7000	
	Robins	3500		3500	
	Hoses	4800			4800
	Excavator 8 hrs	56000			
5	ATV 400	5000	5000		
	ATV 300	5000	5000		
	Boat & Motor	4000			
	Trailer	1200			
	Wayjax	7000		7000	
	Robins	3500		3500	
	Hoses	4800			4800
	Excavator 6 hrs	42000			
6	ATV 400	5000	5000		
	ATV 300	5000	5000		
	Boat & Motor	4000			
	Trailer	1200			
	Wayjax	7000		7000	
	Robins	3500		3500	
	Hoses	4800			4800
	Excavator 3 hrs	21000			
		@ 276000	40000	42000	19200

P-1
Explorations

Saw	Excavator	Boat	Motor	Trailer	Drill	Drill Bits		
								1
								2
								3
								4
			4000					5
				1200				6
								7
								8
								9
	35000							10
								11
								12
			4000					13
				1200				14
								15
								16
	56000							17
								18
								19
								20
			4000					21
				1200				22
								23
								24
								25
	42000							26
								27
								28
			4000					29
				1200				30
								31
								32
								33
	21000							34
								35
154000		16000		4800				

Mac Donald Mines & Explorations Ltd

P2

Ref: Casson Lake Project

Rentals

Jordan

9

Date/2002	Item	Total	ATV	Pumps	Hoses
June 7	ATV 400	5000	5000		
	ATV 300	5000	5000		
	Boat & Motor	4000			
8	ATV 400	5000	5000		
	ATV 300	5000	5000		
	Boat & Motor	4000			
	Trailer	1200			
	Wayss	7000		7000	
	Hoses	4800			4800
	Excavator 6 hrs	42000			
12	ATV 400	5000	5000		
	ATV 300	5000	5000		
	Boat & Motor	4000			
	Wayss	7000		7000	
	Hoses	4800			4800
	Honda	3500		3500	
	Trailer	1200			
	Excavator 7 hrs	49000			
13	ATV	5000	5000		
	ATV	5000	5000		
	Trailer	1200			
	Boat & Motor	4000			
	Wayss	7000		7000	
	Honda	3500		3500	
	Hoses	4800			4800
	Excavator 7 hrs	49000			
14	ATV 400 ATV 300 450m	10000	10000		
	Trailers	1200			
	Boat & Motor	4000			
	Wayss	7000		7000	
	Honda	3500		3500	
	Hoses	4800			4800
	Excavator 7 hrs	49000			
	@	597500	90000	80500	38400

P-2
Explorations

Saws	Excavator	Boat & Motor	Trailer	Drill	Drill Bits	11	12
		4000					
		4000					
			1200				
	42000						
		4000					
			1200				
	49000						
			1200				
		4000					
	47000						
			1200				
		4000					
	49000						
343000	36000		9600				

Mac Donald Mines & Explorations Ltd
 Ref: Casson Lake Project

Rentals London P-3
13

Date/2002	Item	Total	ATV	Pumps	Hoses
June 15	ATV 400	5000	5000		
	ATV 300	5000	5000		
	Boat & Motor	4000			
	Trailer	1200			
	Wayjax	7000		7000	
	Hoses	4800			4800
	Honda	3500		3500	
	Excavator 3 hrs	21000			
16	ATV 400	5000	5000		
	ATV 300	5000	5000		
	Boat & Motor	4000			
	Trailer	1200			
	Wayjax	7000		7000	
	Honda	3500		3500	
	Hoses	4800			4800
	Excavator 5 hrs	35000			
18	ATV 400	5000	5000		
	ATV 300	5000	5000		
	Trailer	1200			
	Boat & Motor	4000			
	Kork saw	6000			
	Honda	3500		3500	
	Hoses	4800			4800
	Excavator 7 hrs	49000			
20	ATV 400	5000	5000		
	ATV 300	5000	5000		
	Trailer	1200			
	Boat & Motor	4000			
	Wanda	7000		7000	
	Hoses	4800			4800
	Excavator 6 hrs	42000			
		@ 862000	130000	112000	57600

P-3
Expenditures

14

Saws	Excavator	Body Motor	Tractor	Drill	Drill Bits	11	12	
								1
								2
								3
								4
		4000						5
			1200					6
								7
								8
								9
21000								10
								11
		4000						12
			1200					13
								14
								15
								16
35000								17
								18
								19
								20
		4000	1200					21
6000								22
								23
								24
								25
49000								26
								27
								28
			1200					29
		4000						30
								31
								32
42000								33
								34
6000	190000	52000	14400					35

P-4
Explorations

16

Saws	Excavator	Boards	Motor	Trailer	Drill	Drill Bits	11	12	
									1
									2
									3
					1200				4
			4000						5
									6
									7
									8
	49000								9
									10
									11
					1200				12
			4000						13
									14
									15
									16
	42000								17
									18
									19
					1200				20
			4000						21
									22
									23
									24
									25
									26
					1200				27
			4000						28
									29
									30
									31
									32
									33
			4000						34
									35
6000	581000		72000		19200				

Date/2002	Item	Total	ATV	Pump	Hoses
June 27	ATV	5000	5000		
	ATV	5000	5000		
	Trailer	1200			
	Boat & Motor	4000			
	Wanda	7000		7000	
	Honda	3500		3500	
	Hoses	4800			4800
28	ATV 400	5000	5000		
	ATV 300	5000	5000		
	Boat & Motor	4000			
	Wanda	7000		7000	
	Honda	3500		3500	
	Hoses	4800			4800
29	ATV 400	5000	5000		
	ATV 300	5000	5000		
	Boat & Motor	4000			
	ATV 400	5000	5000		
	ATV 300	5000	5000		
	Boat & Motor	4000			
		@ 1176800	20000	175000	26000

P-5
Explorations

18

Saws	Excavator	Body Motor	Trailer	Drill	Drill Bits			
								1
								2
								3
			12.00					4
		4000						5
								6
								7
								8
								9
								10
		4000						11
								12
								13
								14
								15
		4000						16
								17
								18
		4000						19
								20
		4000						21
6000	5810.00	88000	20400					22
								23
								24
								25
								26
								27
								28
								29
								30
								31
								32
								33
								34
								35

Lordan Explorations & Mines Ltd
 Ref: Casson Lake Project

Rentals

Lordan

P-1

21

Date/2002	Item	Total	ATV	Pumps	Hoses
July 3	AIV 400	5000	5000		
	ATV 300	5000	5000		
	Trailer	1200			
	Boat + Motor	4000			
	Wanda	7000		7000	
	Honda	3500		3500	
	Hoses	4800			4800
	Rocksaw	6000			
	Excavator 7 hrs	49000			
4	ATV 400	5000	5000		
	ATV 300	5000	5000		
	Trailer	1200			
	Boat + Motor	4000			
	Wanda	7000		7000	
	Honda	3500		3500	
	Hoses	4800			4800
	Rocksaw	6000			
	Excavator 6 hrs	42000			
5	ATV 400	5000	5000		
	Boat + Motor	4000			
	Rocksaw	6000			
6	ATV	5000	5000		
	Boat + Motor	4000			
	Rocksaw	6000			
	Wanda	7000		7000	
	Honda	3500		3500	
	Hoses	4800			4800
9	ATV 400 + 300	10000	10000		
	Trailer	1200			
	Boat + Motor	4000			
	Wanda	7000		7000	
	Honda	3500		3500	
	Hoses	4800			4800
	Rocksaw	6000			
		@ 245800	40000	42000	19200

P-1

Explorations

Saws	Excavator	Boards/Motor	Trailer	Drill	Bits	11	12
			12.00				
		4000					
6000							
	49000						
			12.00				
		4000					
6000							
	42000						
6000		4000					
6000		4000					
			12.00				
		4000					
6000							
30000	91000	20000	3600				

Jordan Explorations & Mines Ltd
 Ref: Casson Lake

Rentals Jordan

P-2

23

Date/2002	Item	Total	ATV	Pumps	Hoses
	Brought Forward	245800	40000	42000	19200
July 9	Excavator 6hrs	42000			
10	2-ATV	10000	10000		
	Trailer	1200			
	Boat & Motor	4000			
	Wanda	7000		7000	
	Honda	3500		3500	
	Hoses	4800			4800
	Rocksaw	6000			
11	2-ATV	10000	10000		
	Trailer	1200			
	Boat & Motor	4000			
	Wanda	7000		7000	
	Honda	3500		3500	
	Hoses	4800			4800
	Excavator 7hrs	49000			
12	2-ATV'S	10000	10000		
	Trailer	1200			
	Boat & Motor	4000			
	Wanda	7000		7000	
	Honda	3500		3500	
	Hoses	4800			4800
	Excavator 7hrs	49000			
13	2-ATV'S	10000	10000		
	Trailer	1200			
	Boat & Motor	4000			
	Wanda	7000		7000	
	Honda	3500		3500	
	Hoses	4800			4800
	Excavator 8hrs	56000			
16	2-ATV	10000	10000		
	Trailer	1200			
	Boat & Motor	4000			
	Wanda	7000		7000	
	Honda	3500		3500	
	Hoses	4800			4800
	Excavator 8hrs	56000			
	2-ATV	10000	10000		
	Trailer	1200			
	Boat & Motor	4000			
	Wanda	7000		7000	
	Honda	3500		3500	
		@			
		595500	90000	94500	38400

P-2
Explorations

Saws	Excavator	Boards	Motor Trailer	Drill	Drill Bits	11	12
30000	91000 42000	20000	3600				
			1200				
		4000					
6000							
			1200				
		4000					
	49000						
			1200				
		4000					
	49000						
			1200				
		4000					
	56000						
			1200				
		4000					
36000	287000	40000	9600				

Date/2002	Item	Total	ATV	Pumps	Hoses
	Brought Forward	595500	90000	74500	38400
July 16	Hoses	4800			4800
	Excavator 2 hrs	14000			
17	ATV 400	5000	5000		
	Trailer	1200			
	Boat & Motor	4000			
	Excavator 7 hrs	49000			
18	2- ATV	10000	10000		
	Trailer	1200			
	Wayjax	7000		7000	
	Honda	3500		3500	
	Hoses	4800			4800
	Excavator 6 1/2 hrs	45500			
	Boat & Motor	4000			
19	2- ATV	10000	10000		
	Trailer	1200			
	Boat & Motor	4000			
	Wayjax	7000		7000	
	Honda	3500		3500	
	Robins	3500		3500	
	Hoses	4800			4800
	Excavator 7 hrs	49000			
20	2- ATV	10000	10000		
	Trailer	1200			
	Boat & Motor	4000			
	Wayjax	7000		7000	
	Honda	3500		3500	
	Robins	3500		3500	
	Hoses	4800			4800
	Excavator 8 1/2 hrs	59500			
24	ATV	5000	5000		
	Trailer	1200			
	Boat & Motor	4000			
	Honda	3500		3500	
	Hoses	4800			4800
	@	744500	130000	136500	62400

P-3

Explorations

26

Saws	Excavator	Boards	Motor	Trailer	Drill	Bits			
36000	287000	40000		9600					1
	14000								2
				1200					3
									4
									5
		4000							6
	49000								7
									8
				1200					9
									10
									11
									12
	45500								13
		4000							14
									15
				1200					16
		4000							17
									18
									19
									20
									21
	49000								22
									23
				1200					24
		4000							25
									26
									27
									28
									29
	59500								30
									31
				1200					32
		4000							33
									34
									35
36000	504000	60000		15600					

00

MacDonald Mines & Explorations Ltd
 Ref: Casson Lake Project

Rentals Jordan P-4
 27

Date/2002	Item	Total	ATV	Pumps	Hoses
	Brought Forward	9445 00	1300 00	1365 00	624 00
July 25	2 - ATV	100 00	100 00		
	Trailer	120 00			
	Boat & Motor	400 00			
	Wayjax	700 00		700 00	
	Hoses	480 00			480 00
26	2 - ATV	100 00	100 00		
	Trailer	120 00			
	Boat & Motor	400 00			
	Wanda	700 00		700 00	
	Hoses	480 00			480 00
27	2 - ATV	100 00	100 00		
	Trailer	120 00			
	Boat & Motor	400 00			
	Wanda	700 00		700 00	
	Wanda	350 00		350 00	
	Hoses	480 00			480 00
	Excavator 8 hrs	560 00			
30	2 ATV	100 00	100 00		
	Trailer	120 00			
	Boat & Motor	400 00			
	Robins	350 00		350 00	
	Hoses	480 00			480 00
	2 Rock saws	120 00			
	Excavator 6 hrs	420 00			
31	2 ATV	100 00	100 00		
	Trailer	120 00			
	Boat & Motor	400 00			
	Robins	350 00		350 00	
	Hoses	480 00			480 00
	2 Rock saws	120 00			
	Excavator 5 hrs	350 00			
	@	12330 00	1800 00	1680 00	864 00

P-4

Explorations

28

Laws	Excavator	Body & Motor	Trailer	Drill	Bits	11	12
36000	504000	60000	15600				
			1200				
		4000					
			1200				
		4000					
			1200				
		4000					
	56000						
		4000	1200				
12000							
	42000						
		4000	1200				
12000							
	35000						
60000	637000	80000	21600				

Date/2002	Item	Total	ATV	Pumps	Hoses
1					
2	Aug 1 2 - ATV's	100 00	100 00		
3	Trailer	12 00			
4	Boat & Motor	40 00			
5	Wayjax	70 00		70 00	
6	Hoses	48 00			48 00
7	Excavator 6 hrs	420 00			
8	2 2 - ATV's	100 00	100 00		
9	Trailer	12 00			
10	Boat & Motor	40 00			
11	Wayjax	70 00		70 00	
12	Hoses	48 00			48 00
13	Excavator 5 hrs	350 00			
14	10 2 - ATV's	100 00	100 00		
15	Boat & Motor	40 00			
16	Excavator 3 hrs	210 00			
17	20 2 - ATV's	100 00	100 00		
18	Trailer	12 00			
19	Boat & Motor	40 00			
20	Wayjax	70 00		70 00	
21	Honda	35 00		35 00	
22	Hoses	48 00			48 00
23	Excavator 8 hrs	560 00			
24	21 2 - ATV's	100 00	100 00		
25	Trailer	12 00			
26	Wayjax	70 00		70 00	
27	Honda	35 00		35 00	
28	Hoses	48 00			48 00
29	Boat & Motor	40 00			
30					
31		@ 2830 00	500 00	350 00	192 00
32					
33					
34					
35					

P-1

Explorations

30

Saws	Excavator	Back Motor	Trailer	Drill	Drill Bits	11	12	
								1
								2
				1200				3
		4000						4
								5
	42000							6
								7
				1200				8
		4000						9
								10
	35000							11
								12
								13
		4000						14
	21000							15
								16
				1200				17
		4000						18
								19
								20
	56000							21
								22
								23
				1200				24
								25
								26
								27
		4000						28
								29
	154000	20000		4800				30
								31
								32
								33
								34
								35

Recap/2001 Rentals

	ATV	Pumps	House	Saws
2 Sept	1820 00	560 00	576 00	120 00
4 Oct	2050 00	1365 00	1008 00	40 00
6 Nov	600 00	105 00	96 00	
	4470 00	2030 00	1680 00	160 00

Recap/2002

11 May	1300 00	840 00	576 00	850 00
13 June	2200 00	1750 00	264 00	600 00
15 July	1800 00	1680 00	864 00	600 00
17 Aug	500 00	350 00	192 00	
	5800 00	4620 00	1896 00	7450 00

Recap/2001

Expenses

	Fuel & Oil	Misc.	Shipping	Wages
2 Sept.	250000	138659	} parts	
4 Oct.	158850	284803	} part supplier	
6 Nov.	121317	103999	} parts supplier	
	530231	527461		

Recap/2002

Expenses

17 May	112104			Bill Cywren 28 hr 2800
June	176070	393033	} parts repairs 12 hr 1200	
July	104184	46504	} parts	
Aug	49284		44420	} transport attayh
	441642	439537	44420	4000

Recap / 2001

Expenses

Wages to Arcevia	Wages Dave Brunne	Wages Gord Barker	Wages Dan Brunne	Total
	7 hrs 7000	112.5 hrs 112500	12 days 180000	
24000	16 hrs 16000	85.5 hrs 87500	10 days 150000	
28600			2 days 30000	
52600	23000	200000	360000	1693292

Recap / 2002

Expenses

Chris Nourafard	Barry Lendrum	Carl Myllymaki	Total
	32 hrs 32000	32 hrs 32000	4 days 60000
38 hrs 38000	157 hrs 157000	99 hrs 99000	20 days 300000
72.5 hrs 72500	128 hrs 128000		18 days 270000
48 hrs 48000	92.5 hrs 92500		12 days 180000
158500	409500	131000	810000
			2474597

2.31742

Casson Lake Property Power Stripping Program
Curtin Twp, Sudbury Mining District

Report by: Dan Brunne, geological technician

April 2006

MacDonald Mines Exploration Ltd completed a two-phase power-stripping program on the Casson Lake [Cu, Ni, PGE, Au] project beginning in the fall from Sept 2, 2001 that continued until Nov 21, 2001. The second phase or more appropriately, a continuance of the initial stripping program commenced again the following spring from May 24, 2002 and continued until Aug 30, 2002. The purpose of the program was to examine the geometry of varying lithologies that control mineralization in bedrock similar to that found in earlier [1990] drill core by BP Resources Canada. Further evaluation using detailed mapping and systematic channel / panel sampling is recommended.

To accomplish the work program a Cat 225 excavator was hired from Lordan Exploration Services of Whitefish Falls, Ontario. Twelve [12] previous drill sites were cleared of overburden that ranged in depth from less than 0.5m up to 3.5m. A total of 519.5 excavator-operating hours [@ \$70 / hr for a total cost of \$36,365] completed the planned work program.

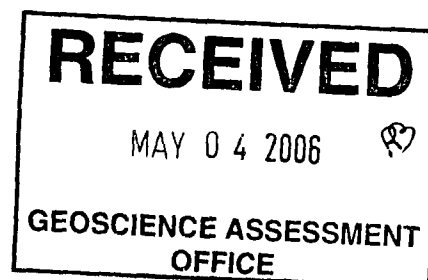
In several cases, due to the great distance from a reliable water source, it became necessary to relay water into multiple sumps so that excavated sites could then be thoroughly washed with high pressure water supplied through high volume portable Honda transfer pumps into these sumps in combination with one Mark IV Wayjax multi-stage HP delivery pump. Distances of up to 1300m were encountered requiring as many as two separate sumps as well as two transfer pumps. The required pumps, hoses, personnel, ATV's, boat, motor etc. were contracted through Lordan Exploration Services.

Site Excavation

The following sites were cleared of overburden avoiding marketable timber wherever possible. Fire suppression equipment was made ready during the fire season. No accidents or injuries occurred during the work program.

Excavated Site References: BP-1, BP-1 East, BP-B, BP-G, Bousquet North, Bousquet East, BP-5, BP-6, BP-7, An-1, AN-2, AN-3 and Malachite Pit.

Primarily, most exploration trenches targeted unexposed bedrock generally along the orientation path and toward the down-dip direction from the BP drill collars that were host to both geophysical anomalies as well as highly anomalous grab sample locations.



Background Information

From the files of geologist Dave Gamble, BP Resources Canada; thirteen drill holes tested a 3 km long zone of anomalous and elevated PGEs within a sill of Nipissing Gabbro dubbed the “Casson Lake Intrusion”.

Seven of these holes, V-74-01 thru V-74-04, and V-74-11 thru V-74-13, focused on the vicinity of old trenches in the 2350 to 2550W an area where surface samples assayed up to 7 *gpt* PGE had previously been encountered.

Considering the widespread distribution of mineralization at surface, the results of the drilling were somewhat disappointing with the highest combined assay of 3.94 *gpt*/ 1m in hole V-74-12.

Stripped Locations: [see compilation map also trench photos]

BP-1: Centered on [L 25+00E 2+50N] this site hosts previous drill holes [1988-89] by BP Resources Canada that includes V74-01, 74-02, 74-03, 74-04, 74-11, 74-12, and 74-13. Two older drill holes [1970's] by Mattagami Lake Mines are ML 74-1 & ML 74-2. The site also contains numerous old blast pits but were not mapped during this work program, the dimensions of the “L” shaped stripped area is approximately 30m wide x 160m long {see photos}. Nipissing Gabbro associated with Sudbury Breccias underlies the overburden and in several places is well mineralized with chalcopyrite and pyrrhotite.

BP-1 East: [L27+00E 1+00N] Stripping took place approximately 15m east of BP drill collar V74-04 due to excessive overburden at the collar location which lies in low topography. Approx. area stripped is 20m X 35m. This site exposes the southwestern contact between the above gabbroic rocks and the Sudbury breccia and is similarly mineralized.

BP- G Zone: [L33+00E 2+50N] Location of previous BP drill collar – V74-06. Approx. stripped area is 15m X 55m. Mineralized Nipissing gabbro is exposed within the entire trench area.

Bousquet North: [L40+00E 4+50N] Location of previous BP drill collar – V74-07. Approx. stripped area is 20m X 35m]. Mineralization: cpy + po in gabbro.

Bousquet East: [L40+50E 2+50N] No previous drill collar – new trench exposes the south contact of the Nipissing gabbro with Huronian metasediments argillite and conglomerates of the Gowganda Formation in the vicinity of the past-producer Bousquet Gold Mine. The stripped area is approx. 5m X 15m that uncovered a quartz vein parallel to the sheared contact of carbonatized gabbro and is highly mineralized with asp + cp + py in an east-west direction.

BP- 5: [L48+50E 4+50N] Location of previous BP drill collar – V74-08. Approx. stripped area is 30m X 37m – trench exposes well-mineralized gabbro with cpy + po along the north contact with quartzite.

BP- 6: [L50+50E 4+50N] Location of previous BP drill collar – V74-09. Approx. stripped area is 25m X 35m – trench exposes cpy + po mineralization in gabbro along the north contact with quartzite.

BP- 7: [L53+00E 4+50N] Location of previous BP drill collar – V74-10 – approx. stripped area is 15m X 40m along the northern margin of the gabbro that is sparsely mineralized with cpy + po.

AN- 3: Location includes 9.89 gpt PGE over a 0.50cm channel sample + 1280 kilogram bulk sample from a mineralized pegmatoidal amphibolitic metapyroxenite layer or pipe-like structure. The mineralization consists mainly of cpy + po + cr as blebs, dissemination and discrete grains in the amphibolitic matrix. Approx. stripped area is 27m X 40m.

AN- 2: No previous drilling – previous channel samples + grab samples under OPAP. Approx. stripped area is 12m X 17m – the site exposes mineralized [cpy + po] in Nipissing gabbro near the northern margin immediately south of Casson Lake.

AN- 1: [Malachite Pit] No previous drilling – previous channel samples + grab samples under OPAP - old pit of unknown origin in coarse grain anorthositic unit. Approx. stripped area is 15m X 25m – site exposes mineralized [cpy + po] gabbro in contact with a irregular shaped albitized anorthositic unit that measures up to 3m in width and in places contains abundant malachite.

Please Note: MacDonald Mines Exploration Ltd. completed the above work program covered in this report. However, the work program was not filed for assessment and in early 2004 they returned the property to the present property holders due to the then market conditions that lead to their lack of sufficient exploration funding required to continue further exploration on the project. Several difficulties followed that hampered a speedier recovery of the current data presented in this report thus the reason for such late filing.

Summary of Expenditures [see **Lordan Exploration Services Rentals & Expenses**]

Total expenses for Rentals 2001 [see 2001 Rental Recap]	\$32,277.
Total expenditures for Expenses 2001 [see 2001 Expenses recap]	\$16,933.
Total expenses for Rentals 2002 [see 2002 Rental Recap]	\$24,746.
Total expenditures for Expenses 2002 [see 2002 Expenses Recap]	<u>\$31,983.</u>
Total expenditures:	\$105,939.

Late filing for assessment purposes – reduced by 50%

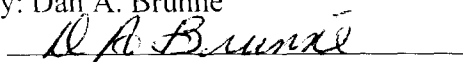
Total allowable assessment credit.

\$52,969.50

Summary of daily Work Report

Employees: Bill Cywink	May 2002,	28 hrs X \$10 / hr = \$ 280.00
	June 2002,	12hrs X \$10 / hr = 120.00
Dave Brunne	Sept 2001,	7hrs X \$10 / hr = 70.00
	Nov 2001,	16hrs X \$10 / hr = 160.00
Gord Barker	Sept, 2001,	112.5hrs X \$ 10 /hr = 1125.00
	Oct, 2001,	85.5hrs X \$10 /hr = 875.00
Dan Brunne	Sept, 2001,	12 days X \$150 / day = 1800.00
	Oct, 2001,	10 days X \$150 / day = 1500.00
	May, 2002,	4 days X \$150 / day = 600.00
	June, 2002,	20 days X \$150 / day = 3000.00
	July, 2002,	18 days X \$150 / day = 2700.00
	Aug, 2002,	12 days X \$150 / day = 1800.00
Chris Hansford	June, 2002,	38hrs X \$10 / hr = 380.00
	July, 2002,	72.5hrs X \$10 /hr = 725.00
	Aug, 2002,	48 hrs X \$10 /hr = 480.00
Barry Lendrum	May, 2002,	32hrs X 410 / hr = 320.00
	June, 2002,	157hrs X \$10 / hr = 1570.00
	July, 2002,	128hrs X \$10 /hr = 1280.00
	Aug, 2002,	92.5hrs X \$10 / hr = 925.00

Prepared by: Dan A. Brunne



P.O. Box 35
Whitefish Falls, Ontario
POP 2H0

Statement of Qualification

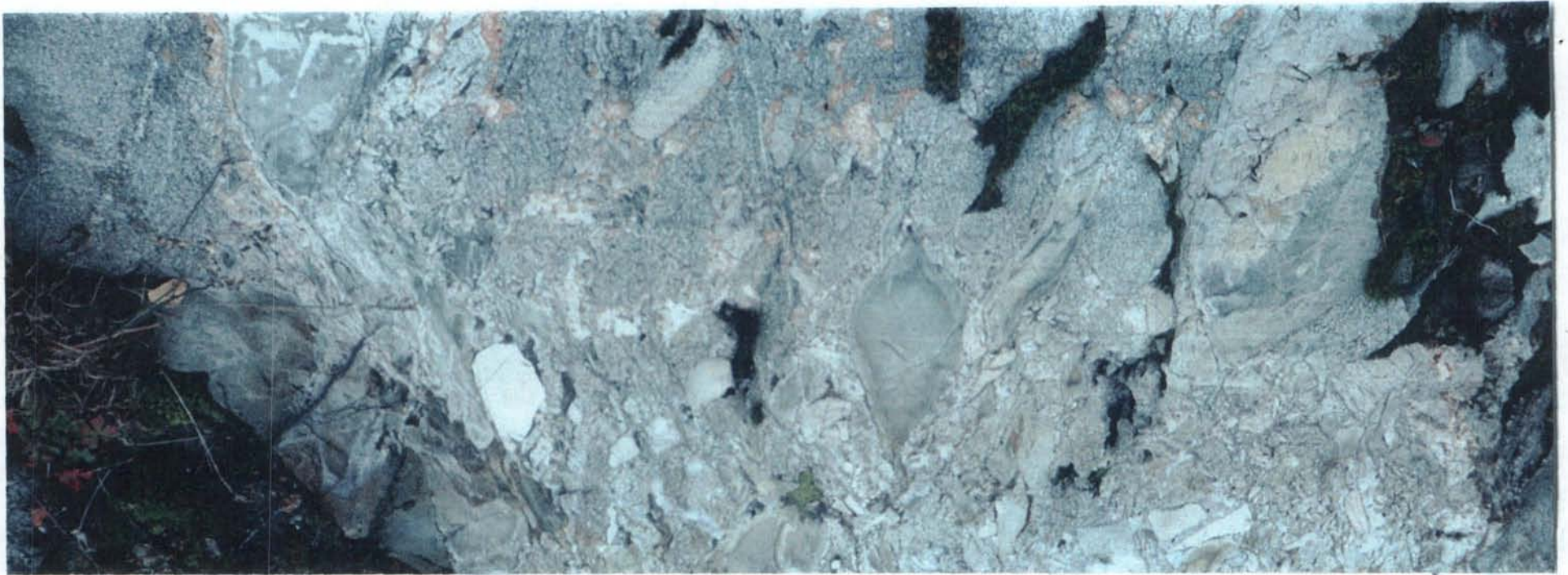
The undersigned, Danny Albert Brunne, hereby provides a statement of adequacies of qualification with respect to MNDM requirements for reporting geological and geotechnical assessment of mining exploration work under the mining act in the province of Ontario.

1. I am a graduate from Sudbury Mining and Technical School – year 1960.
2. I held the position of Research Technician with the Atomic Energy of Canada, Deep River, Ontario Nuclear Facility from 1960 to 1965.
3. I became a professional prospector in 1979 and with the exception of one year have continued to make my livelihood from mining exploration work until present date.
4. I have held numerous contract positions as Geological Technician and Geological Technologist with both major and junior mining as well as mining consulting companies that include Derry Mitchner Booth & Wahl, MPH Consulting, BP Resources Canada and Cameco Gold Corp.
5. I am a member in good standing of the Ontario Prospectors Association, Sudbury Prospectors Association and the Sudbury Geological Discussion Group.
6. I have completed my duties to the satisfaction of my superiors for more than 27 years.
7. My duties include; prospecting regionally as well as out-of-province “far-north arctic regions”, line-cutting, claim-staking, geochemical soil and humus sampling, lake-bottom sediment sampling, regional till sampling, supervision of diamond drills, core logging, core splitting, field mapping, detailed trench mapping, channel sampling, drilling and blasting trenches, excavation work planning and supervision and airborne reconnaissance prospecting.
8. I have successfully completed several OPAP programs to the satisfaction of MNDM.
9. I am licensed to prospect in both Ontario and Quebec.

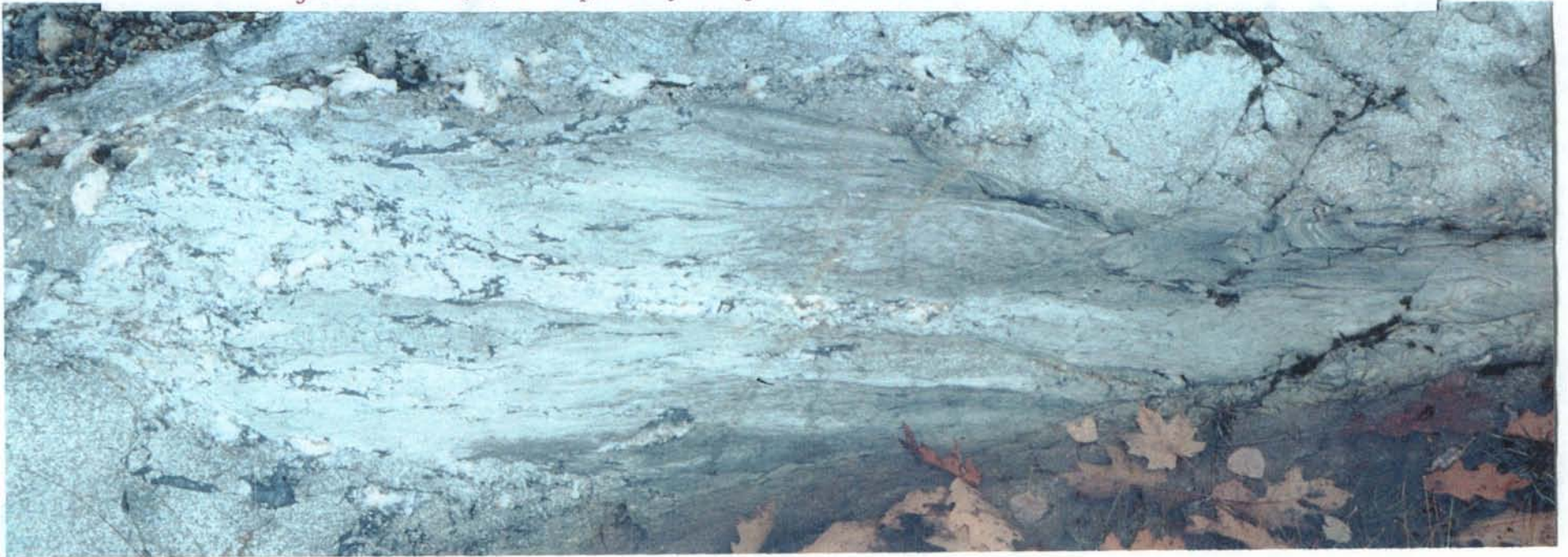
By: Dan A Brunne



April 17, 2006



[BP-1] Photos from Line 24+00E 2+00N, Heterolithic Breccias northwest contact of Casson Lake Gabbroic Intrusive, Curtin Twp, Sudbury Mining District, October 2002.



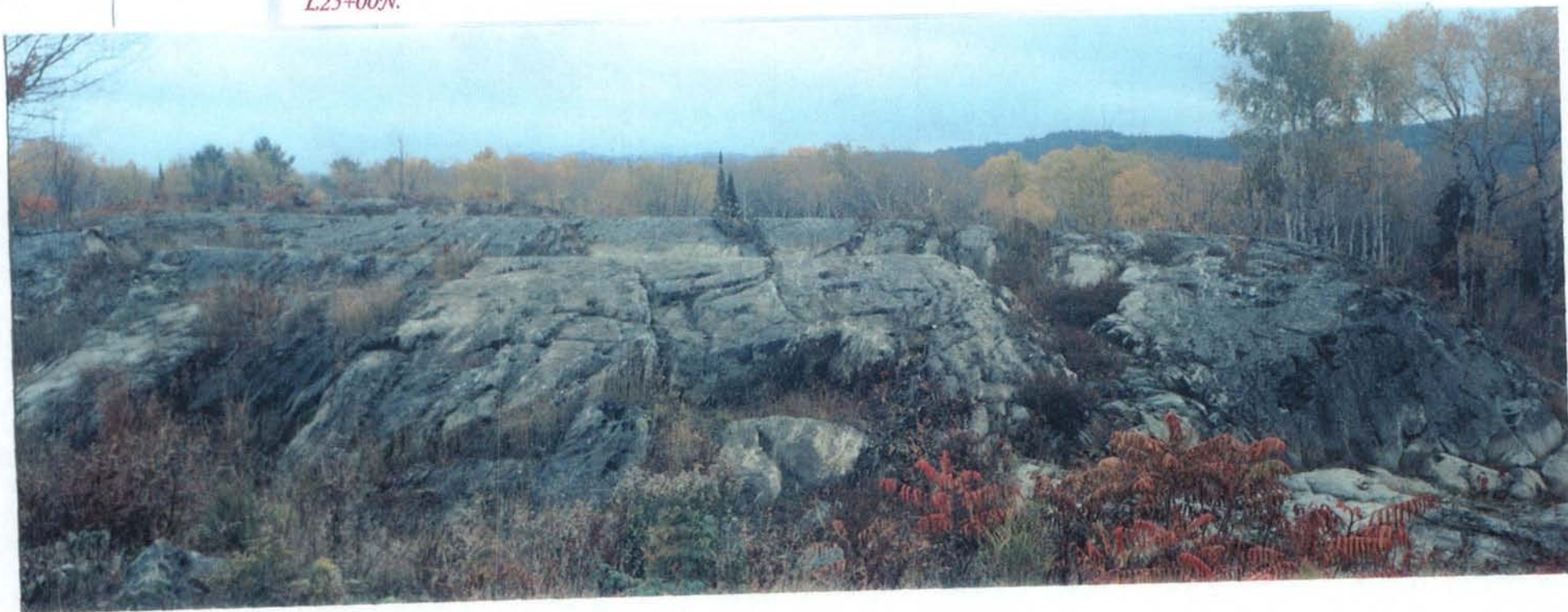


[BP-1 East] Top: looking northeast from BP-1. Below: [BP-G] zone looking north from drill collar V74-06.





[BP-1] Top: looking south from 0+50N L.25+00E. Below: [BP-1] looking east from 0+50E L.25+00N.





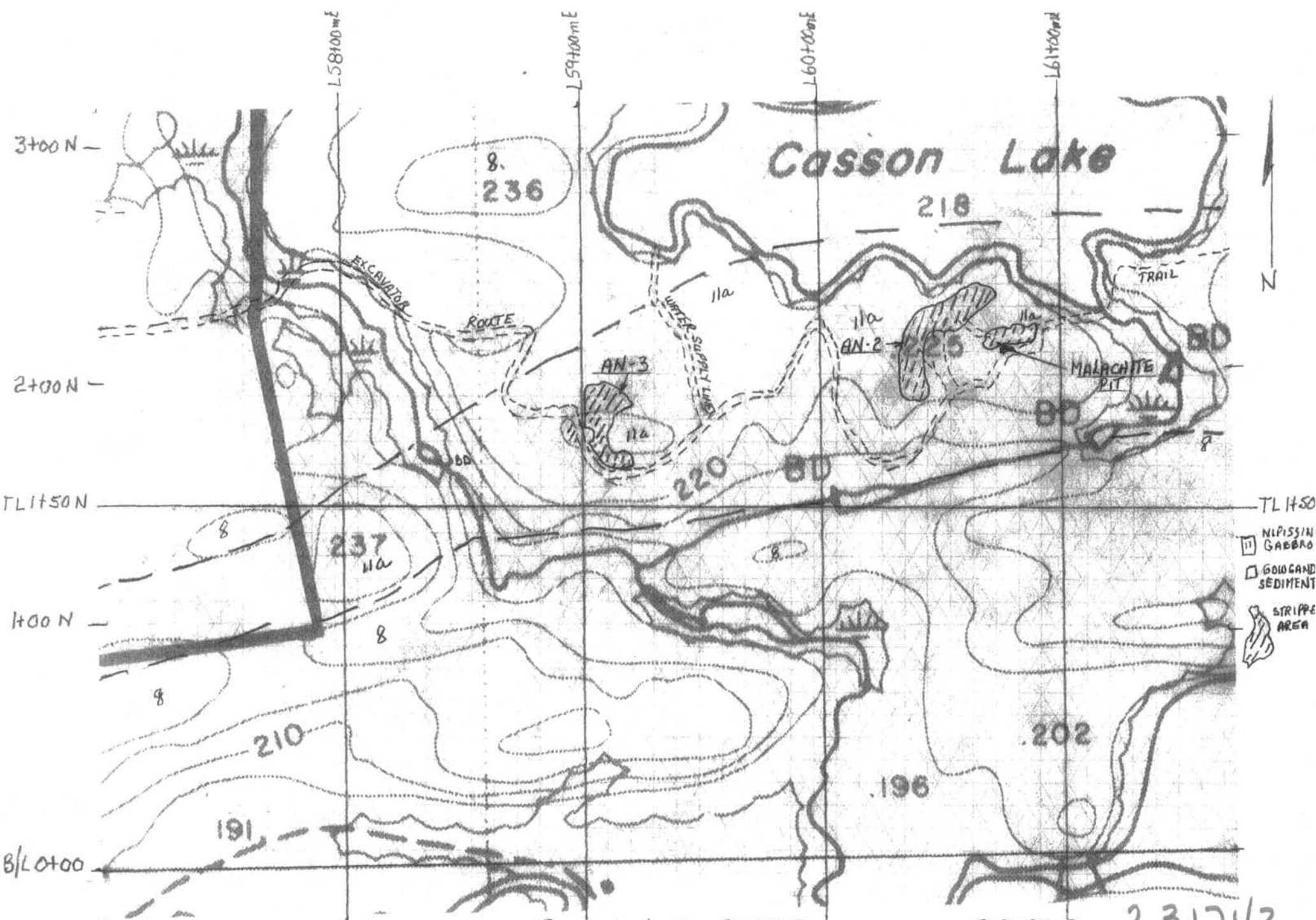
[BP-1] Top: Saw cuts through heterolithic breccia for channel samples. Below: [BP-1] Channel samples through shear zone L24+00E 1+85N.





[BP-7] Top: Looking south from drill collar V74-10. Below: [BP-5] looking north towards drill collar V74-08 note burgundy colour of PGE host gossan.

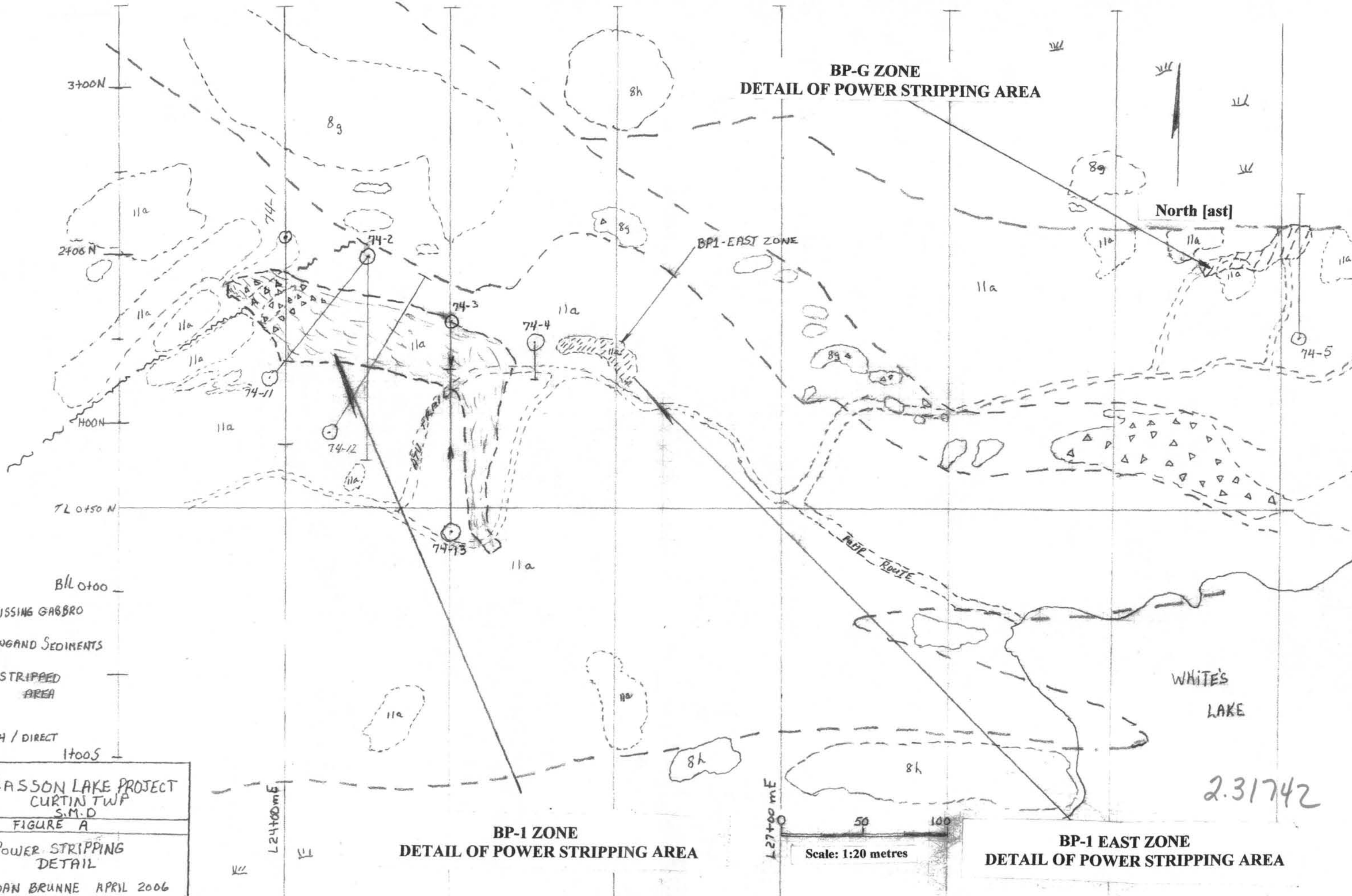




By: DAN BRUNNE
APRIL 2006

CASSON LAKE PROJECT
CURTIN TWP
S.M.D.

FIGURE D 2.31742
SCALE: 1:20 METRES
0 50 100



**BP-G ZONE
DETAIL OF POWER STRIPPING AREA**

BP-1-EAST ZONE

**BP-1 ZONE
DETAIL OF POWER STRIPPING AREA**

**BP-1 EAST ZONE
DETAIL OF POWER STRIPPING AREA**

North [ast]

Scale: 1:20 metres

2.31742

- 11a NIPISSING GABBRO
- 8 GOWGAND SEDIMENTS
- STRIPPED AREA
- DDH / DIRECT

CASSON LAKE PROJECT
CURTIN TWP
S.M.D
FIGURE A
POWER STRIPPING
DETAIL
BY: DAN BRUNNE APRIL 2006



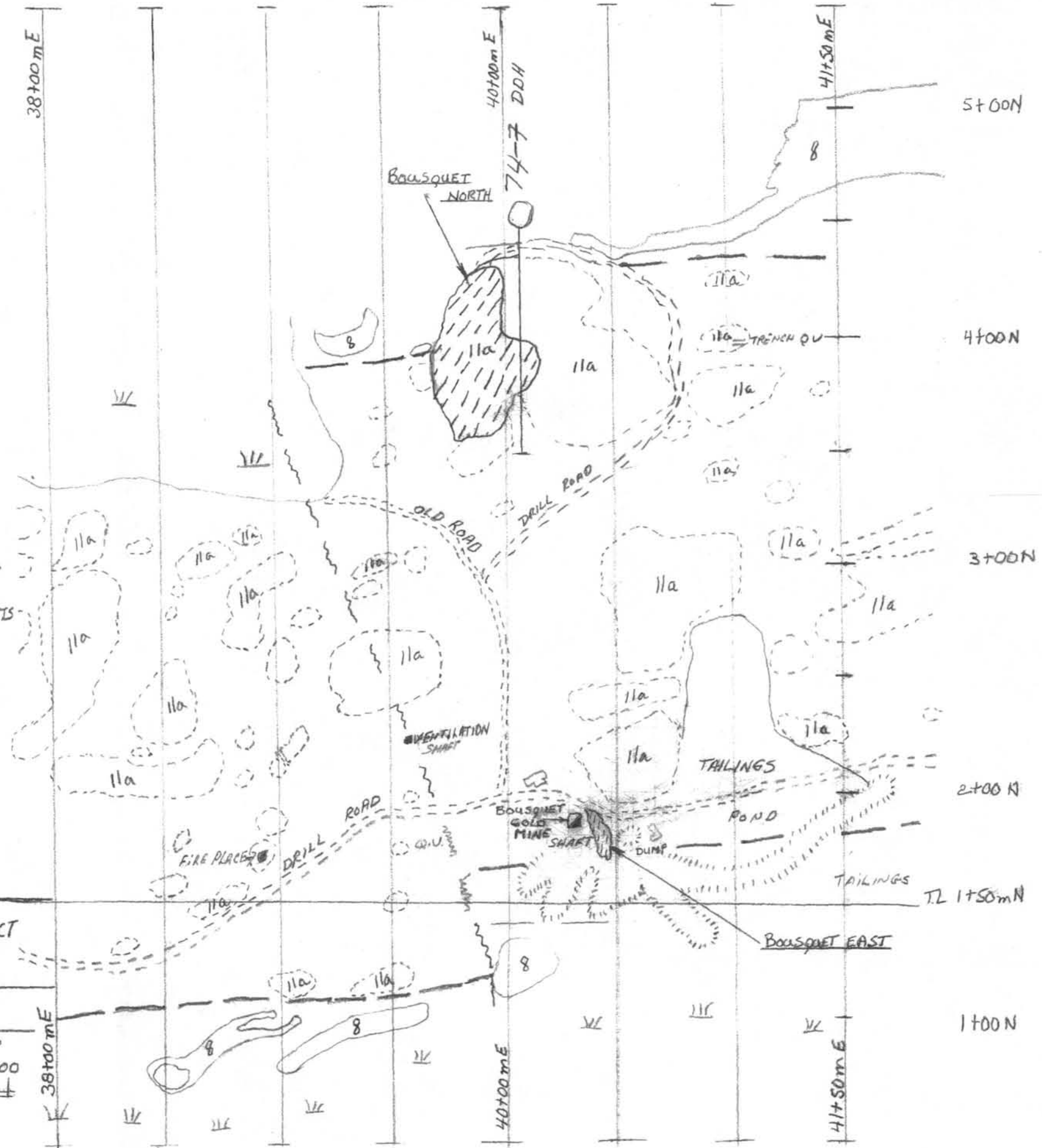
- 11a NIPISSING GABBRO
- 8 GOWGANDA SEDIMENTS
- STRIPPED AREA

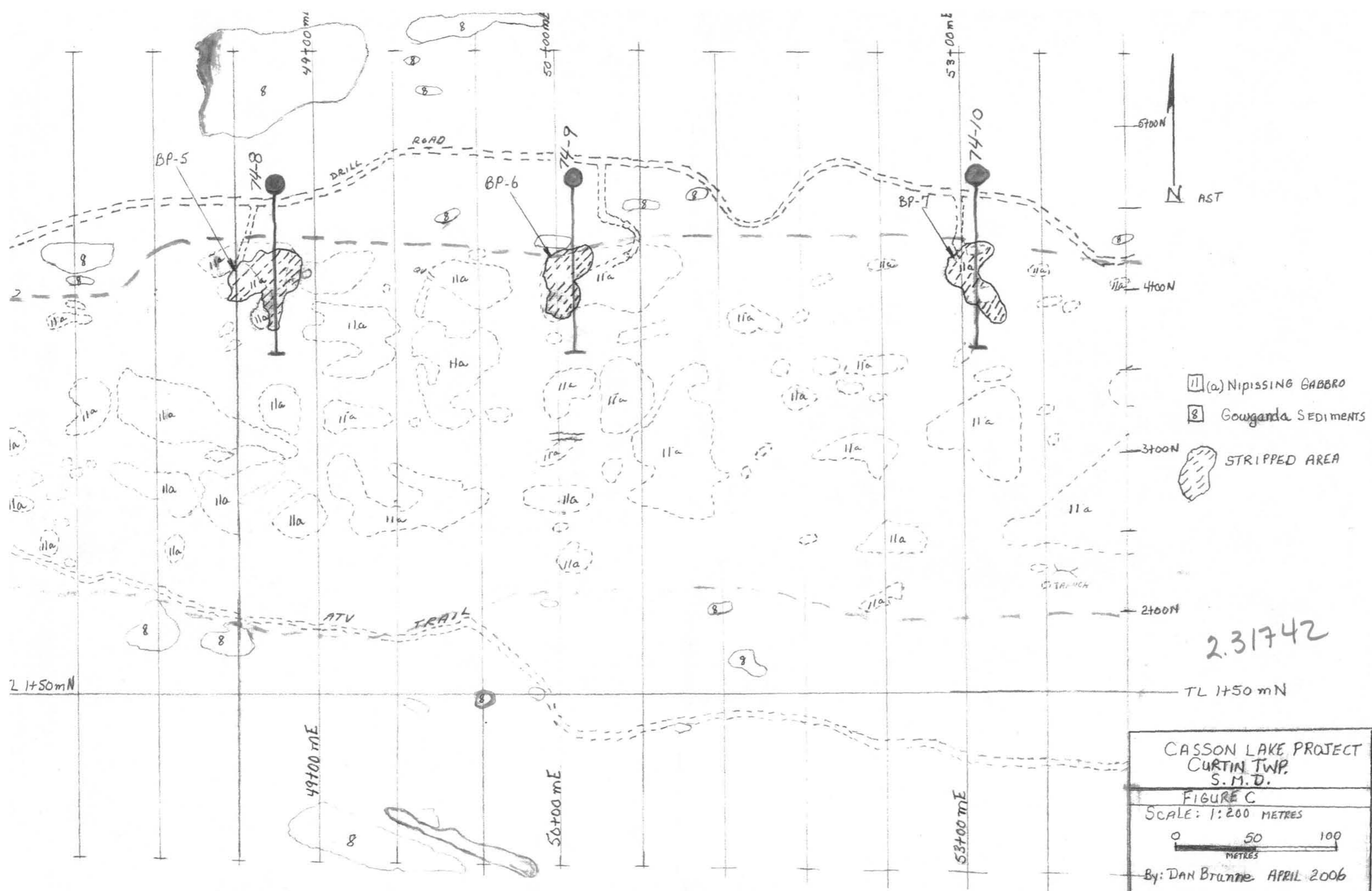
2.31742

CASSON LAKE PROJECT
CURTIN TWP
S.M.D

FIGURE B
SCALE: 1:20 METRES

By: DAN BRUNNE
APRIL 2006





CASSON LAKE PROJECT
 CURTIN TWP.
 S.M.D.
 FIGURE C
 SCALE: 1:200 METRES
 0 50 100
 METRES
 By: DAN BRUNNE APRIL 2006