

2-31972

REPORT ON DIAMOND DRILLING

PJV CARR OPTION

CARR TOWNSHIP

ST. ANDREW GOLDFIELDS



N. Wayne Reid, P.Geo.  
St. Andrew Goldfields Ltd.  
April 10, 2006

## Table of Contents

Introduction  
Location and Access  
Personnel  
Historic Work  
Summary of Drilling

### List of Figures

- Fig. 1 Central Carr Property Map
- Fig. 2 2006 Diamond Drilling Map
- Fig. 3 Central Carr Compilation Map
- Fig. 4 Section 538,500 East (CARR-06-02)
- Fig. 5 Section 539,067 East (CARR-06-03)

### Appendix A

Diamond Drill Logs and assay Certificates

## **INTRODUCTION**

A total of 675 meters was drilled between Feb 16, 2006 and March 1, 2006. The drilling was undertaken by Norex Drilling of Timmins, Ontario using NQ diamond drilling equipment. The core was picked up at the drill site daily, delivered to St. Andrew's exploration office and logged by Wayne Reid and Michael W. Leahey. Final logs and sections were prepared. A total of 80 samples were sawn and assayed for Au.

All UTM grid reference points are relative to NAD 27.

## **LOCATION AND ACCESS**

The Carr option property comprises a total of 30 claims located in central Carr Twp. St. Andrew are earning up to a 60% interest in 24 claims optioned from the PJV and own a 100% interest in the other 6 claims. Access is via a series of township roads on the north side of Matheson. Both holes were accessed from Iron Road which is located 2 km north of Matheson off North Road. This drill program was carried out on claims 1151435, 1151735, 979580 and 981451.

## **PERSONNEL**

Supervisor, geologist and person responsible for this report:

Wayne Reid  
Mike Leahey  
C/O St. Andrew Goldfields Inc  
RR # 2  
Matheson, ON  
P0K 1N0

Core splitting, pickup, and helper

Dan Dunstan  
George Ross  
St. Andrew Goldfields

The drilling was carried out by:

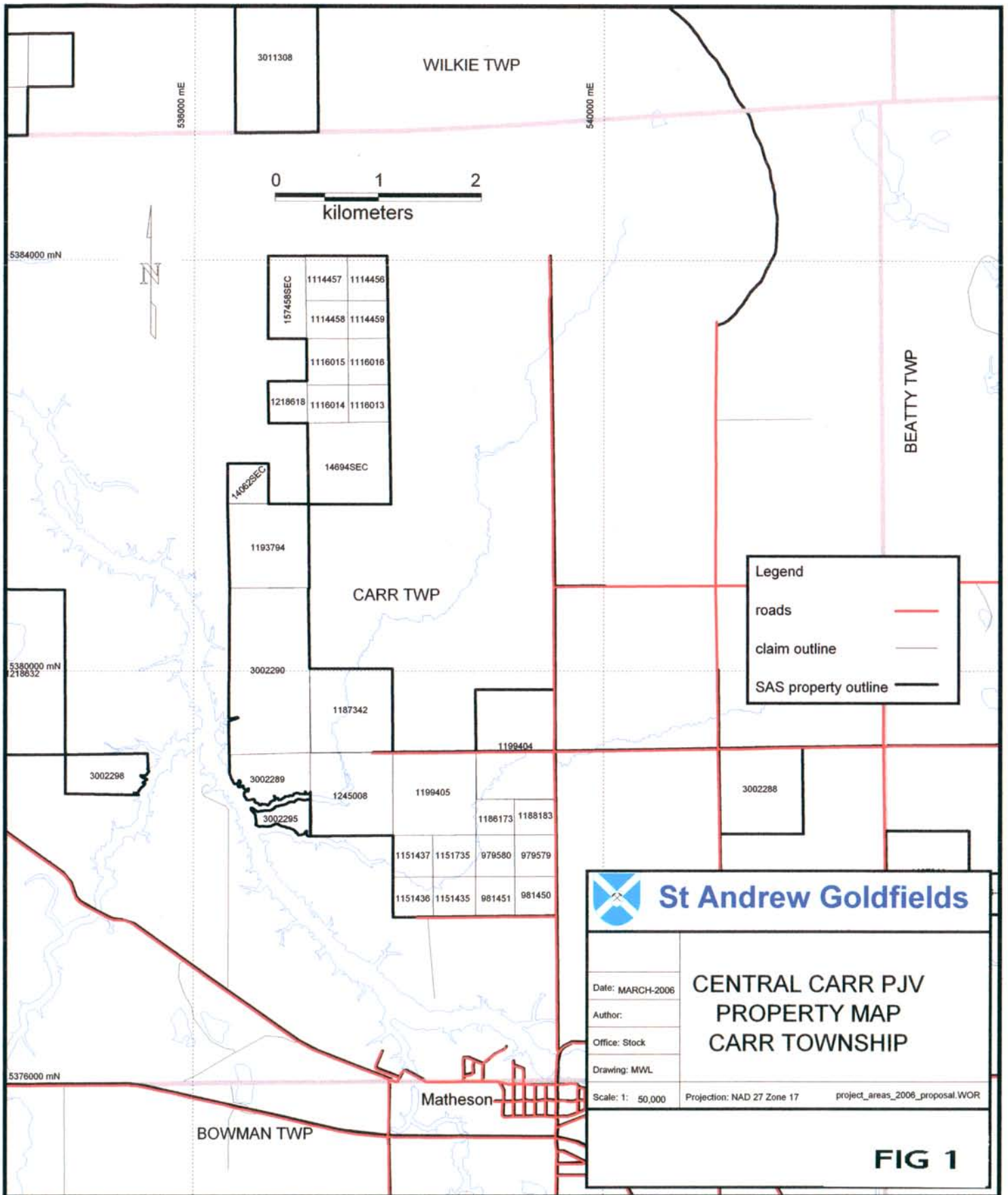
Norex Drilling  
Timmins, ON.

## **HISTORIC WORK**

This drill program was a follow-up to a detailed mag survey. There has been no previous drilling carried out in this area however there has been historic drilling carried out to the north testing the main sedimentary/volcanic contact which is interpreted as the Porcupine Destor Fault. Figure 3 is a plan of this work along with the approximate location of the present drilling.

## **SUMMARY OF DRILLING**

A total of 675 meters was drilled between Feb 16, 2006 and March 1, 2006. Two holes, using NQ equipment, were completed and the drill logs and sections are appended. The initial hole Carr-06-02A was abandoned due to the hole being lost while drilling overburden. A total of 80 samples were split and sent for Au assays. Swastika Labs completed the analytical work. Figure 1 and 2 shows the locations of this drilling.



539000 mE

540000 mE

5384000 mN

5380000 mN  
218632

5376000 mN

3011308

WILKIE TWP



157458SEC	1114457	1114456
	1114458	1114459
1218618	1116015	1116018
	1116014	1116013
14694SEC	14694SEC	

14694SEC

1193794

CARR TWP

BEATTY TWP

Legend	
roads	
claim outline	
SAS property outline	

3002290

1187342

1199404

3002298

3002289

3002295

1245008

1199405

3002288

1186173	1188183		
1151437	1151735	979580	979579
1151436	1151435	981451	981450

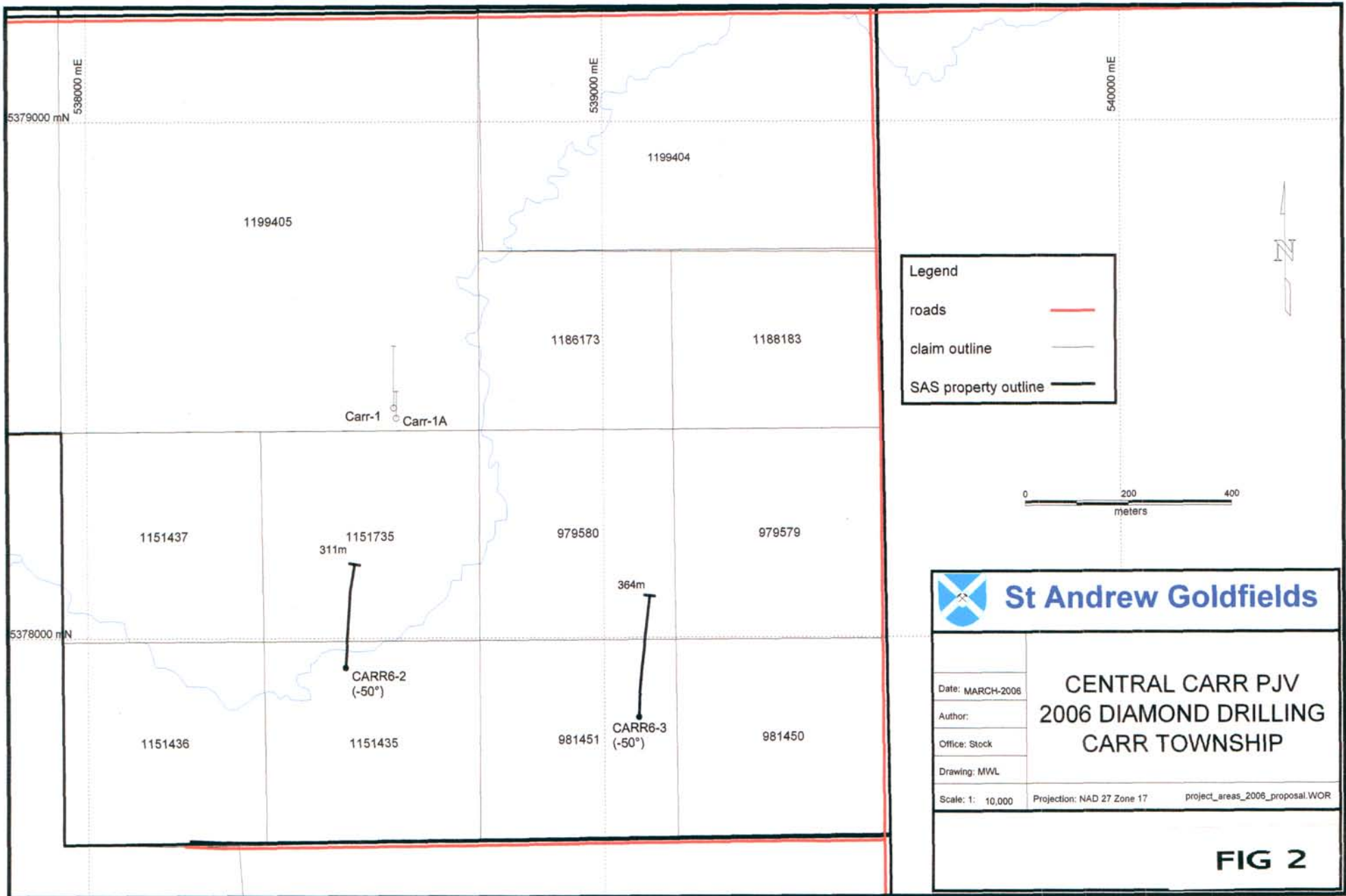
**St Andrew Goldfields**

Date: MARCH-2006	<b>CENTRAL CARR PJV PROPERTY MAP CARR TOWNSHIP</b>	
Author:		
Office: Stock		
Drawing: MWL		
Scale: 1: 50,000	Projection: NAD 27 Zone 17	project_areas_2006_proposal.WOR

Matheson

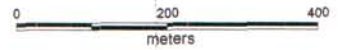
BOWMAN TWP

**FIG 1**

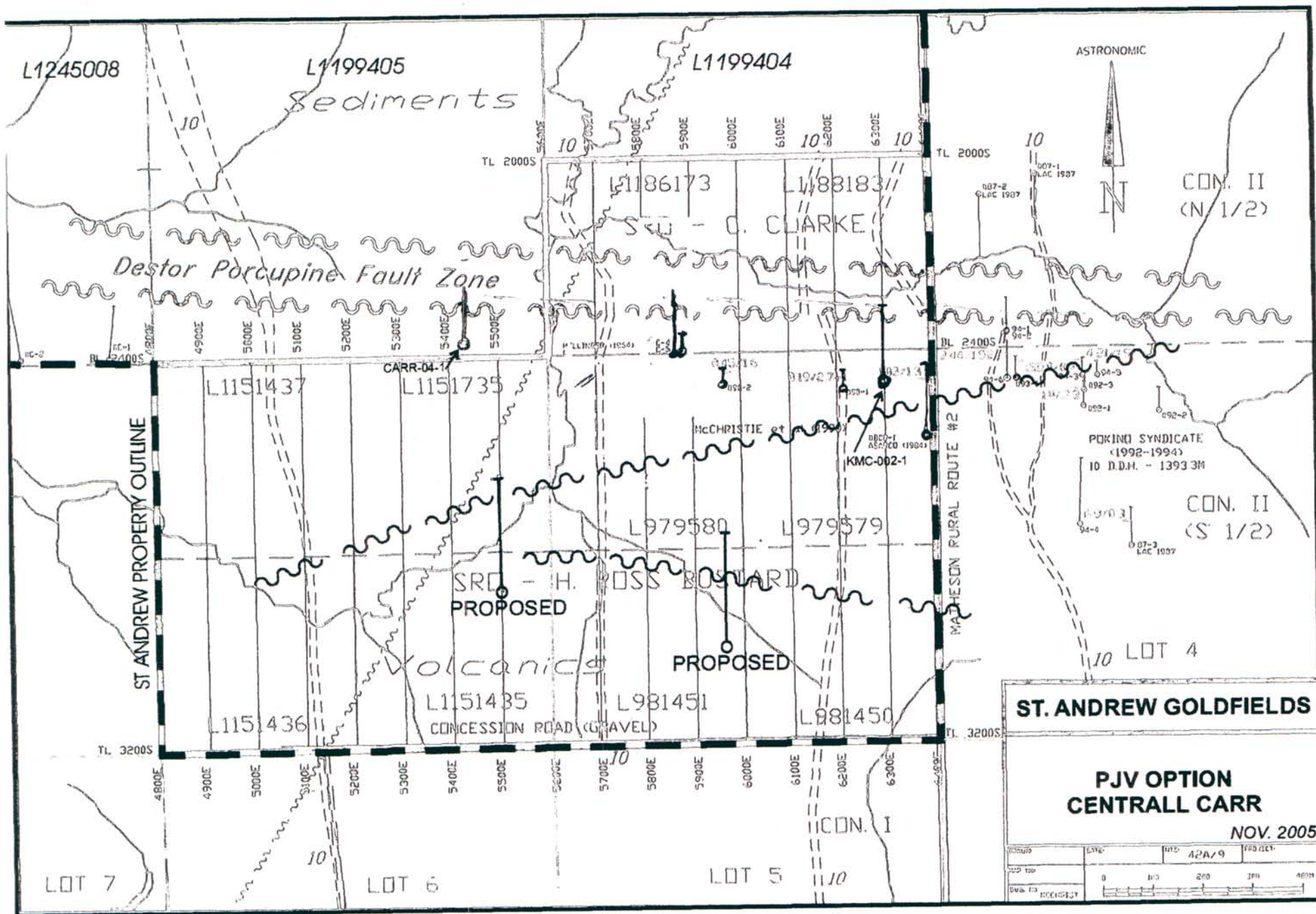


**Legend**

- roads —
- claim outline
- SAS property outline



<b>St Andrew Goldfields</b>	
Date: MARCH-2006 Author: Office: Stock Drawing: MWL	<b>CENTRAL CARR PJV          2006 DIAMOND DRILLING          CARR TOWNSHIP</b>
Scale: 1: 10,000    Projection: NAD 27 Zone 17    project_areas_2006_proposal.WOR	<b>FIG 2</b>



2-31972

FIG 3

**APPENDIX A**  
**DIAMOND DRILL LOGS**  
**and**  
**ASSAY CERTIFICATES**



2031972



## St Andrew Goldfields Ltd DRILLHOLE SUMMARY REPORT

CARR6-2

Hole ID: CARR6-2

Property: PJV Carr

PROJECT : Regional SAG  
 TENEMENT: 1151435  
 GRID: Expl.  
 LOCATION: Central Timmins  
 NTS MAP  
 REFERENCE: 42A/9  
 ORIGINAL ID: PJV06-2

Reference	Easting	Northing	Azimuth	Core size:	NQ
Local:			0.0	Core storage:	Stock Mine
UTM:	538,500.00	5,377,943.00	360.0	# of Boxes:	60
Local units:	meters (m)			Casing length:	60
Elevation (local)	Elevation (masl)	Inclination:	-50.0		
		Start Depth:	0.00		
		Final Depth:	311.00		
350.00	0.00				

Drill Contractor:	Norex Drilling Ltd.
Drill Rig:	JKS Boyles 37
Date Started:	2/16/2006
Date Finished:	2/24/2006
Logged By:	N.W.Reid, M. W. Leabey
Relogged By:	<i>Michael W. Leabey</i>
Sampled By:	D. Dunstan, G. Ross

Purpose:	Drilled to test interpreted splay and associated faults, from airborne high resolution and ground magnetic data, south of the (PDFZ).
Remarks:	Core logged Feb 19-24, 2006
Gear left:	

*** Downhole Survey Data ***				
Depth	Survey method	Azimuth		Dip
		True	Local	
0.00	Brunton	360.0	0.0	-50
215.00	Reflex	6.5	0.0	-49
311.00	Reflex	11.4	0.0	-49

CARR6-2								GEOLOGICAL CORE LOG			POINT FTRS		ASSAYS		
Depth(m)		Major Units			Alteration						feature	value	Sample ID	Au (gpt)	Au (opt)
from	to	U1	U2	U3	Style	Type	Intns.	DESCRIPTION							
0.00	60.00	HPO						Overburden: boulders from start of hole							
60.00	81.30	VMP						Pillowed Mafic Volcanic: Black siliceous, good pillow selvages at top of unit, pillows well preserved in lower section. Weak bleaching on pillow rims. Lower contact 40 cm quartz carbonated shear zone, 40 degrees to core axis, trace pyrite.							
	80.30		81.30							7951	0.031	0.001			
81.30	82.65	ISP						Syenite Porphyry: pink to red colour, insitu fractured and brecciated. Minor pyrite 1-2% sulphides							
	81.30		82.75							7952	0.002	0.000			
82.65	143.00	VMO						Mafic Volcanic: fine to medium graine mafic flows, invidual flows 0.5 meters thick, coarser middle sections. Epidote alteration in coarser grained areas. Minor narrow quartz veins 30 degrees to core axis. Trace pyrite throughout unit. Some of the flow centers amygdaloidal							
	139.50		139.55		QVO			Quartz Vein; banded, 20% pyrite in band, 45 degrees to core axis							
143.00	271.50	VMP	VMA					Pillowed Amygdaloidal Mafic Volcanic: pillowed mafic flows, same as first unit, bleached epidotized pillow selvages with calcite rimmed amygdaloidal centers. Few narrow ribboned quartz veins.							
	147.20		147.80							7953	0.000	0.000			
	152.00		153.40					Altered and quartz vein section							
	152.00		152.60		IFD			Felsic Dyke; light brown, contacts 30 degrees to core axis. 10 cm quartz vein in center of dyke							
	152.00		153.00							7954	0.007	0.000			
	153.00		154.00							7955	0.000	0.000			
	153.10		153.40		QVO			Ribboned Quartz Vein; 40 degrees to core axis, quartz carbonated chlorite banding							
	179.90		180.20		QVO			Quartz Vein; 20 degrees to core axis, true thickness 15cm. 5% coarse pyrite in irregular qtz vein with sericite altered mafic inclusions							
	179.90		180.40							7956	0.583	0.017			
			187.00					foliation	45.00						
	198.30		198.32		QVO			Quartz Vein; 15 degrees to core axis							
	200.80		203.00					Some coarser section of flows							
	208.00		209.50					Foliated section 45 degrees to core axis, weakly altered chlorite and sericite							
	209.50		224.00					Increasing epidote alteration and amygdules. Pillow rims and intrapillow sections altered to epidote and sericite							
	250.00		264.00					Disseminated sulphides and pyrite bands upto 10 cm wide.							
	257.00		258.50							7957	0.017	0.000			
	258.50		260.00							7958	0.000	0.000			
	259.50		259.60					Pyrite band 10 cm wide							
	260.00		261.50							7959	0.000	0.000			
	261.50		263.00							7960	0.000	0.000			

CARR6-2									GEOLOGICAL CORE LOG			POINT FTRS		ASSAYS		
Depth(m)		Major Units			Alteration			feature				value	Sample ID	Au (gpt)	Au (opt)	As (ppb)
from	to	U1	U2	U3	Style	Type	Intns.	DESCRIPTION								
	263.00	264.50												7961	0.000	0.000
	263.50	263.55								30% disseminated pyrite						
271.50	293.10	VMO								Mafic Volcanic: mottled light green, gray to dark green, massive fine grained mafic volcanic flows. Some quartz veining (1-3 cm)						
293.10	306.00	VGO								Gabbro: medium grained mafic intrusive, mottled light to medium gray, crowded feldspar phenocrysts						
306.00	311.00	VMO								Mafic Volcanic: massive, fine grained mafic volcanic flows.						

# 2031972



## St Andrew Goldfields Ltd DRILLHOLE SUMMARY REPORT

CARR6-3

**Hole ID: CARR6-3**

**Property: PJV Carr**

PROJECT : Regional SAG  
 TENEMENT: 981451  
 GRID: Expl.  
 LOCATION: Central Timmins  
 NTS MAP  
 REFERENCE: 42A/9  
 ORIGINAL ID: PJV06-3

Reference	Easting	Northing	Azimuth	Core size:	NQ
Local:			0.0	Core storage:	Stock Mine
UTM:	539,067.00	5,377,846.00	360.0	# of Boxes:	80
Local units:	meters (m)			Casing length:	48
Elevation (local)	Elevation (masl)	Inclination:	-50.0		
		Start Depth:	0.00		
350.00	0.00	Final Depth:	364.00		

Drill Contractor:	Norex Drilling Ltd.
Drill Rig:	JKS Boyles 37
Date Started:	2/25/2006
Date Finished:	3/1/2006
Logged By:	N.W.Reid, M. W. Leahey
Relogged By:	<i>Michael W. Leahey</i>
Sampled By:	D. Dunstan, G. Ross

<b>Purpose:</b>	Drilled to test interpreted splays and associated faults, from airborne high resolution and ground magnetic data, south of the (PDFZ
<b>Remarks:</b>	Core logged Feb 26- March 3, 2006
<b>Gear left:</b>	

*** Downhole Survey Data ***				
Depth	Survey method	Azimuth		Dip
		True	Local	
0.00	Brunton	360.0	0.0	-50
62.00	Reflex	3.6	0.0	-49
152.00	Reflex	6.2	0.0	-50
360.00	Reflex		0.0	-52

CARR6-3									GEOLOGICAL CORE LOG			POINT FTRS		ASSAYS				
Depth(m)		Major Units			Alteration			feature				value	Sample ID	Au (gpt)	Au (opt)	As (ppb)		
from	to	U1	U2	U3	Style	Type	Intns.	DESCRIPTION										
0.00	48.00	HPO						Overburden: boulders from start of hole										
48.00	88.30	VMO	VMP					Mafic Volcanic, Pillowed Mafic Volcanic: medium gray, fine to medium grained, massive to pillowed mafic flows										
	56.00		59.00					dark gray, siliceous section, occasional 1 cm wide quartz vein, 50-70 degrees to core axis										
	60.40		67.50					light gray, bleached with amygdaloidal sections, probably pillows										
	63.70		64.00			AAO		bleached with albitic fragments, minor pyrite										
	75.60		80.00					alteration along pillow rims, 55 pyrite										
	79.80		80.30			ACO	AEO	alteration carbonate, sericite with pyrite										
	79.80		80.30										7962	0.010	0.000			
	84.50		85.50										7963	0.051	0.001			
	84.60		84.80					foliated 45 degrees to core axis, pyrite sericite alteration										
	88.00		89.00										7964	0.010	0.000			
88.30	96.20	VMO	AAO					Albite Altered Mafic Volcanic: pale gray, bleached albitic alteration with quartz veining in mafic flows, sporadic disseminated pyrite										
	89.00		90.00										7965	0.007	0.000			
	90.00		90.80										7966	0.120	0.004			
	90.80		91.80			QVO		quartz veining with pyrite, 20-50 degrees to core axis										
	90.80		91.80										7967	0.195	0.006			
	91.80		92.80										7968	0.002	0.000			
	92.80		93.80										7969	0.007	0.000			
	93.80		94.80										7970	0.017	0.000			
	94.80		95.80										7971	0.000	0.000			
96.20	111.70	VMP						Pillowed Mafic Volcanic: mottled light to medium gray, pillowed mafic flows with altered pillowed selvages. Alteration carbonate +/- albite along narrow hairline fractures.										
	103.00		104.00										7972	0.333	0.010			
	107.60		109.10			ACO	AAO	stronger carbonate, albite alteration with disseminated pyrite. Intermixed gray and white dendritic texture										
	107.60		109.10										7973	0.010	0.000			
111.70	116.80	IFD						Homblende Felsic Dyke: 2-5% hornblend laths in light gray fine grained felsic matrix. Contact quite sharp.										
116.80	222.50	VMP						Pillowed Mafic Volcanic: fine to medium grained, pillowed flows. Some hornblende dykes and local alteration. Bleaching (alteration) increases with quartz veining or annealed fracturing										
	137.80		137.83			QVO		vuggy carbonate, quartz vein 45 degrees to core axis										
	138.30		141.00					altered bleached with quartz veins										
	139.30		140.30										7974	0.003	0.000			
	140.30		140.60					irregular carbonate, chlorite veining										

CARR6-3							GEOLOGICAL CORE LOG	POINT FTRS		ASSAYS			
Depth(m)		Major Units			Alteration			feature	value	Sample ID	Au (gpt)	Au (opt)	As (ppb)
from	to	U1	U2	U3	Style	Type		Intns.	DESCRIPTION				
140.30	141.30									7975	0.000	0.000	
141.70	142.60				IFD								
151.20	154.00				IFD								
180.40	181.40									7976	0.130	0.004	
180.60	182.40				AEO	AAO							
181.40	182.40									7977	0.247	0.007	
182.40	184.10				IPF								
182.40	183.40									7978	0.000	0.000	
193.40	193.80				AAO	ACO							
193.40	193.90									7979	0.041	0.001	
206.00	207.00				AAO	QVC							
206.00	207.00									7980	0.000	0.000	
210.40	210.50												
212.50	212.80												
212.50	212.80									7981	0.000	0.000	
222.50	277.90	VMO											
230.70	232.20				AAO								
230.70	232.20									7982	0.000	0.000	
244.90	248.10				AAO								
244.90	245.90									7983	0.007	0.000	
245.90	246.90									7984	0.000	0.000	
246.90	247.90									7985	0.086	0.003	
254.00	255.50												
267.20	268.20				QVO								
267.20	268.20									7986	0.002	0.000	
273.80	273.82												
277.90	301.50	VMP											
290.80	291.80									7987	0.000	0.000	
301.00	302.00									7988	0.000	0.000	

CARR6-3									GEOLOGICAL CORE LOG			POINT FTRS		ASSAYS		
Depth(m)		Major Units			Alteration							feature	value	Sample ID	Au (gpt)	Au (opt)
from	to	U1	U2	U3	Style	Type	Intns.	DESCRIPTION								
301.50	364.00	VMX	VMH					Mafic Breccia, Mafic Hyaloclastic: 10-25% altered fragments, vesicular, swirls and veined in a weakly chloritized mafic groundmass. Alteration buff to light gray, carbonate/ albite with sericite. Occasional quartz veins and areas with siliceous matrix. Pyrite sporadic distribution, disseminated, veins and blebs. Alteration follow permeable areas and has a mottled amoebic texture of white buff overprint of gray matrix								
302.00	303.00										7989	0.000	0.000			
303.00	304.00										7990	0.000	0.000			
304.00	305.00										7991	0.000	0.000			
305.00	306.00										7992	0.014	0.000			
306.00	307.00										7993	0.000	0.000			
307.00	308.00										7994	0.000	0.000			
308.00	309.00										7995	0.002	0.000			
309.00	310.00										7996	0.000	0.000			
310.00	311.00										7997	0.010	0.000			
311.00	312.00										7998	0.089	0.003			
312.00	313.00										7999	0.007	0.000			
313.00	314.00										8000	0.038	0.001			
314.00	315.00										7751	0.113	0.003			
314.10	314.50							banded section with quartz veining plus alteration 40 degrees to core axis								
315.00	316.00										7752	0.000	0.000			
316.00	317.00										7753	0.000	0.000			
317.00	318.00										7754	0.000	0.000			
318.00	319.00										7755	0.000	0.000			
319.00	320.00										7756	0.000	0.000			
320.00	321.00										7757	0.007	0.000			
321.00	322.00										7758	0.000	0.000			
322.00	323.00										7759	0.000	0.000			
323.00	324.00										7760	0.000	0.000			
324.00	325.00										7761	0.000	0.000			
325.00	326.00										7762	0.000	0.000			
326.00	327.00										7763	0.000	0.000			
327.00	328.00										7764	0.000	0.000			
328.00	329.00										7765	0.000	0.000			
329.00	330.00										7766	0.000	0.000			
330.00	331.00										7767	0.000	0.000			
331.00	332.00										7768	0.003	0.000			
332.00	333.00										7769	0.000	0.000			

CARR6-3								GEOLOGICAL CORE LOG			POINT FTRS		ASSAYS		
Depth(m)		Major Units			Alteration						feature	value	Sample ID	Au (gpt)	Au (opt)
from	to	U1	U2	U3	Style	Type	Intns.	DESCRIPTION							
333.00	334.00										7770	0.000	0.000		
334.00	335.00										7771	0.000	0.000		
335.00	336.00										7772	0.000	0.000		
336.00	337.00										7773	0.000	0.000		
337.00	338.00										7774	0.000	0.000		
338.00	339.00										7775	0.000	0.000		
339.00	340.00										7776	0.000	0.000		
340.00	341.00										7777	0.000	0.000		
341.00	342.00										7778	0.000	0.000		
342.00	343.00										7779	0.000	0.000		
343.00	344.00										7780	0.000	0.000		
364.00								End of hole							





Established 1928

# Swastika Laboratories Ltd

Assaying - Consulting - Representation

## Geochemical Analysis Certificate

**6W-0626-RG1**

Company: **ST. ANDREW GOLDFIELDS**  
Project: Carr (DJV-06-2) **CARR 6-2 mwl**  
Attn: M. Leahey

Date: MAR-13-06

We hereby certify the following Geochemical Analysis of 11 Core samples submitted MAR-07-06 by .

Sample Number	Au PPB	Au Check PPB
7951	31	-
7952	2	-
7953	Nil	-
7954	7	-
7955	Nil	-
7956	583	555
7957	17	-
7958	Nil	2
7959	Nil	-
7960	Nil	-
7961	Nil	-

Certified by Denis Charley



Established 1928

# Swastika Laboratories Ltd

Assaying - Consulting - Representation

Page 1 of 3

## Geochemical Analysis Certificate

**6W-0627-RG1**

Company: **ST. ANDREW GOLDFIELDS LTD**  
Project: Carr (DJV-06-03) *CARR6-3 mwl*  
Attn: M. Leahey

Date: MAR-14-06

We hereby certify the following Geochemical Analysis of 69 Core samples submitted MAR-07-06 by .

Sample Number	Au PPB	Au Check PPB
7751	113	137
7752	Nil	-
7753	Nil	-
7754	Nil	-
7755	Nil	-
7756	Nil	-
7757	7	-
7758	Nil	-
7759	Nil	Nil
7760	Nil	-
7761	Nil	-
7762	Nil	-
7763	Nil	-
7764	Nil	-
7765	Nil	-
7766	Nil	-
7767	Nil	-
7768	3	-
7769	Nil	-
7770	Nil	-
7771	Nil	Nil
7772	Nil	-
7773	Nil	-
7774	Nil	-
7775	Nil	-
7776	Nil	-
7777	Nil	-
7778	Nil	-
7779	Nil	-
7780	Nil	-

Certified by *Dennis Chantre*



Established 1928

# Swastika Laboratories Ltd

Assaying - Consulting - Representation

Page 2 of 3

## Geochemical Analysis Certificate

**6W-0627-RG1**

Company: **ST. ANDREW GOLDFIELDS LTD**  
Project: Carr (DJV-06-03) *CARR6-3 MWL*  
Attn: M. Leahey

Date: MAR-14-06

We hereby certify the following Geochemical Analysis of 69 Core samples submitted MAR-07-06 by .

Sample Number	Au PPB	Au Check PPB
7962	10	-
7963	51	-
7964	10	-
7965	7	-
7966	120	-
7967	195	195
7968	2	-
7969	7	-
7970	17	-
7971	Nil	-
7972	333	405
7973	10	-
7974	3	-
7975	Nil	-
7976	130	-
7977	247	-
7978	Nil	-
7979	41	31
7980	Nil	-
7981	Nil	-
7982	Nil	-
7983	7	-
7984	Nil	-
7985	86	106
7986	2	-
7987	Nil	-
7988	Nil	-
7989	Nil	-
7990	Nil	-
7991	Nil	-

Certified by Denis Chantre



Established 1928

# Swastika Laboratories Ltd

Assaying - Consulting - Representation

Page 3 of 3

## Geochemical Analysis Certificate


**6W-0627-RG1**

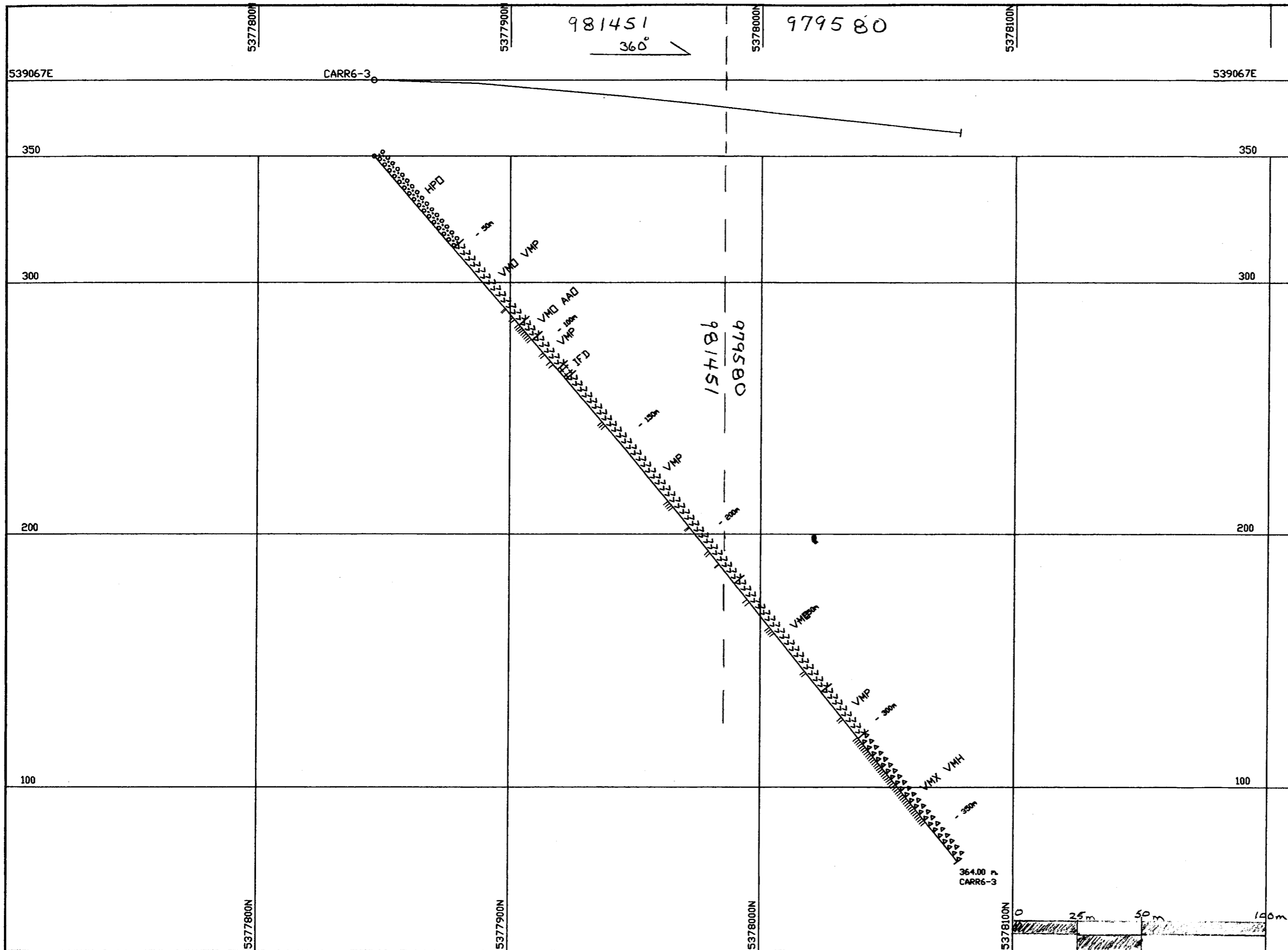
Company: **ST. ANDREW GOLDFIELDS LTD**  
Project: Carr (DJV-06-03) *CARR6-3 mvl*  
Attn: M. Leahey

Date: MAR-14-06

We hereby certify the following Geochemical Analysis of 69 Core samples submitted MAR-07-06 by .

Sample Number	Au PPB	Au Check PPB
7992	14	-
7993	Nil	-
7994	Nil	-
7995	2	-
7996	Nil	-
7997	10	-
7998	89	103
7999	7	-
8000	38	-
Blank	Nil	-
STD OxJ36	2366	-

Certified by 



Geological Legend:

- HPD Overburden
- ISP Syenite Porphyry
- IFD Hornblende Felsic Dyke
- VGD Gabbro
- VMD Mafic Volcanic
- VMP Pillowed Mafic Volcanic
- VMA Amygdaloid Mafic Volcanic
- VMX Mafic Volcanic Fragmental
- VMH Mafic Volcanic Hyaloclastic

2.31972

Sample locations Au g/t  
All values < 1 g/t Au

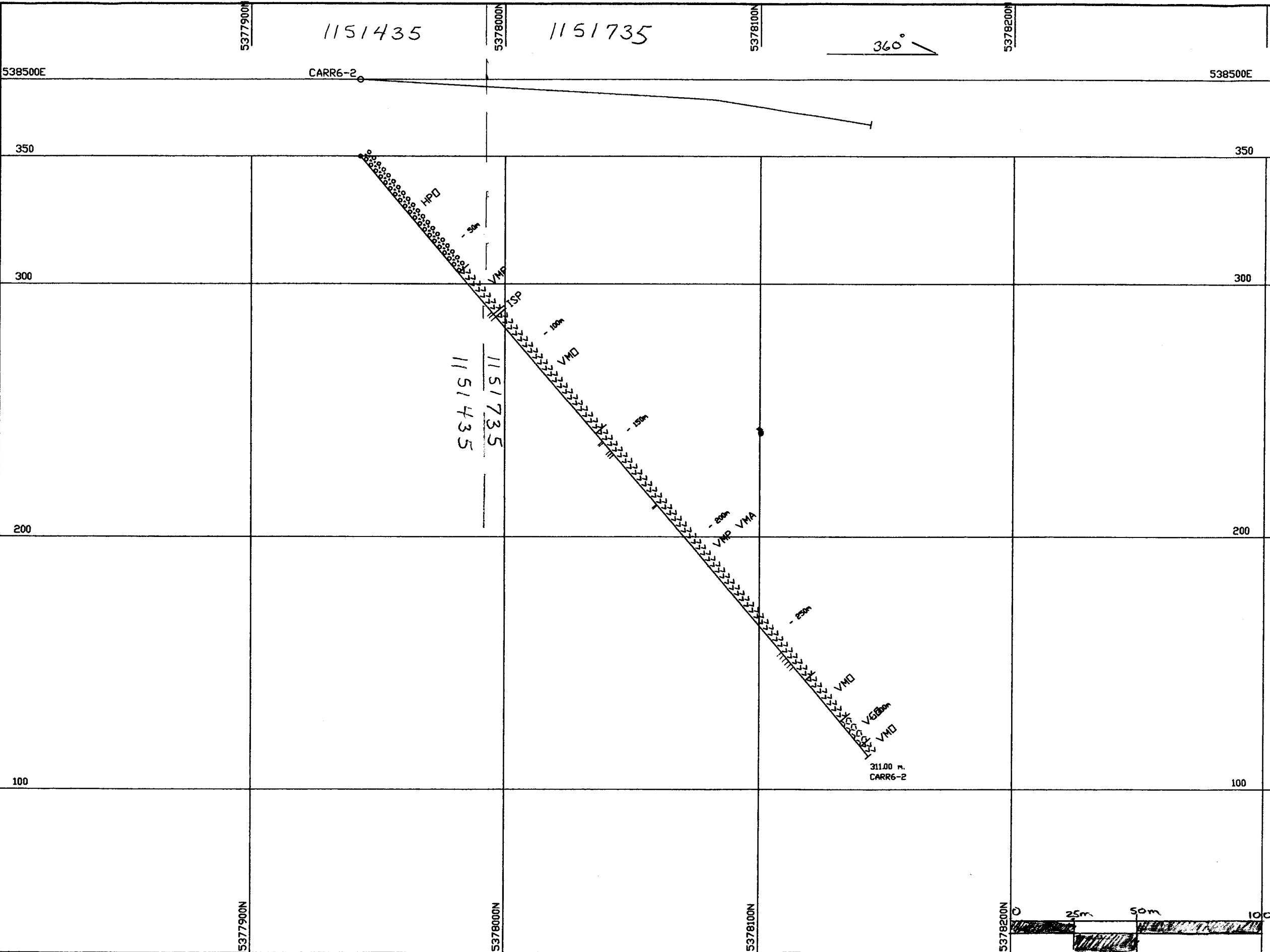
St Andrew Goldfields Ltd

PJV CARR TOWNSHIP  
SECTION 539067E

2006 DRILLING  
CARR6-3 (PJV06-3)

DATE: 06/04/07

SCALE: 1/1500



- Geological Legend:
- HPD Overburden
  - ISP Syenite Porphyry
  - IFD Hornblende Felsic Dyke
  - VGD Gabbro
  - VMD Mafic Volcanic
  - VMP Pillowed Mafic Volcanic
  - VMA Amygdaloid Mafic Volcanic
  - VMX Mafic Volcanic Fragmental
  - VMH Mafic Volcanic Hyaloclastic

2-31972

Sample locations as per  
All values < 1 g/t Au

St Andrew Goldfields Ltd

PJV CARR TOWNSHIP

SECTION 538500E

2006 DRILLING

CARR6-2 (PJV06-2)

DATE: 06/04/17 SCALE: 1/1500