

2.31933

## TECHNICAL REPORT

**IDENTIFICATION OF MINING LAND:** Claims are located in the Southwest corner of McAuslan Township, abutting to the Northwest corner of Garrow Township. Claims are East of Reynolds Lake and North of Burke Lake. The claims are accessed by a Forest Access Road, being McConnell Lake Road off of Highway 63 North.

**PURPOSE OF PHYSICAL WORK:** The purpose for the physical works done was to verify the colors of the stone, the location of the stone and the type of stone.

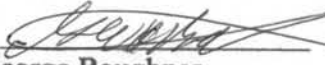
**DAILY LOG:** The work done was to remove the overburden on Claim 1214672 Claim 1214673 The overburden was anywhere from fifteen centimetres to two metres, with sandy material and coniferous trees. This was done on May 20, 2005 and August 12, 2005.

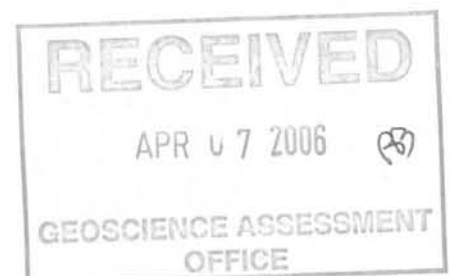
On May 20, 2005 and August 12, 2005, the equipment used was a 220 Daewoo Excavator with a hydraulic hammer. The excavator was used to strip and hammer to obtain samples. This excavator was used for 5 hours @ \$150.00 per hour and an operator for 5 hours @ \$20.00 per hour on May 20, 2005 and for 10 hours @ \$150.00 per hour and an operator for 10 hours @ \$20.00 per hour on August 12, 2005. The excavator was used for stripping on Claim 1214672 on May 20, 2005 and Claim 1214673 on August 12, 2005.

I observed on this stripping that the green gneiss muscovite stone vein on claim 1214672 has more mica and quartz and it has twistier seams as compared to the green on Claim 1214673. There is fifteen metre face on this claim. The area stripped was forty metres long by fifteen metres wide.

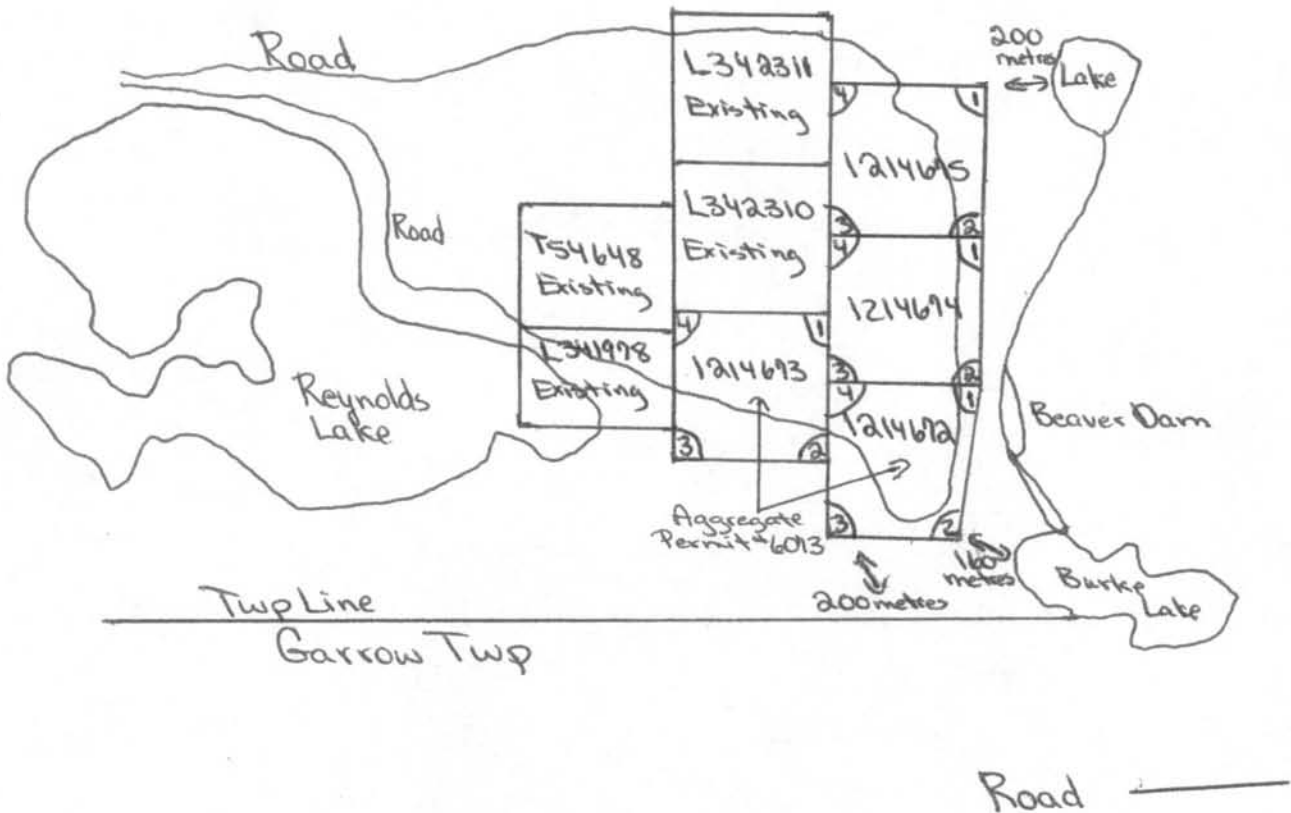
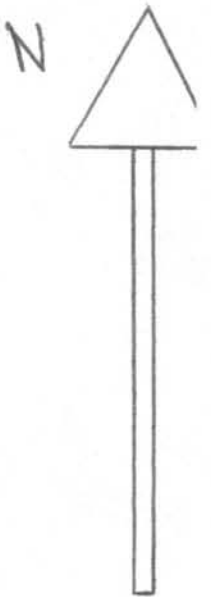
I observed on this stripping that the red gneiss muscovite stone vein on Claim 1214673 is more of a granite like stone and runs east and west for approximately eighty metres by ten metres wide. There is about a two-metre face and the area seems to be covered with sandy material and coniferous trees. To the south of this is a rusty like gneiss material and to the north it turns to a green gneiss muscovite stone. The seams in the stone are more uniform in width.

George Boughner prepared this report on April 07, 2006.

  
George Boughner  
1113045 Ontario Inc. o/a  
McLaren's Bay Mica Stone Quarries  
Client #401198



# McAuslan Twp



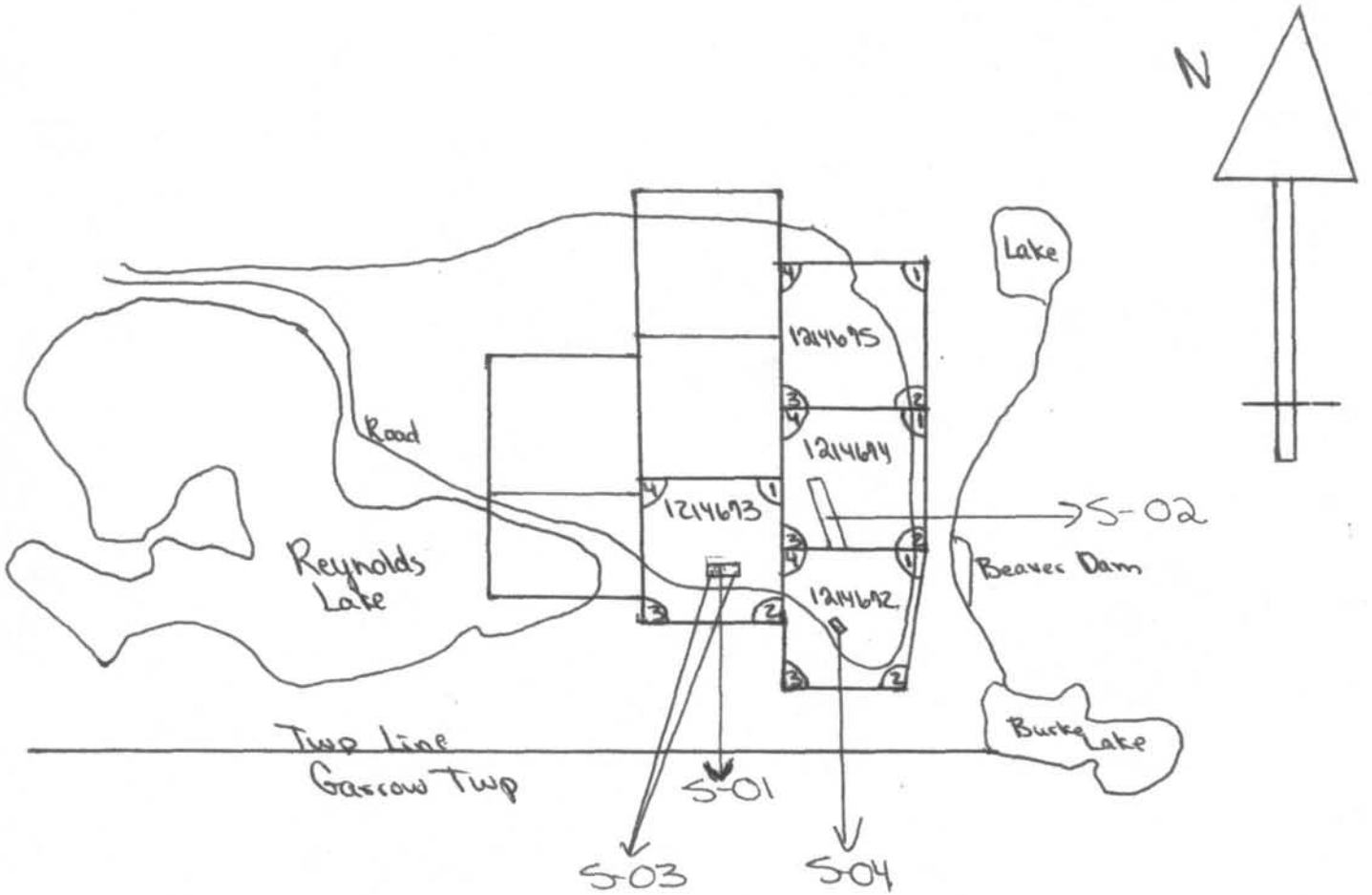
## Key Map

1113045 Ontario Inc  
ola McLaren's Bay Nica Stone Quarries  
Client # 401198

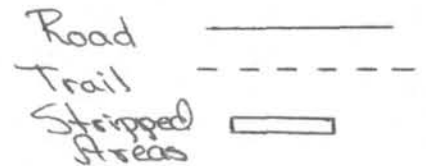
10(a)(a)(iii) Year 2005

# McAuslan Twp

Magnetic Declination  
Used  
Scale 1:20

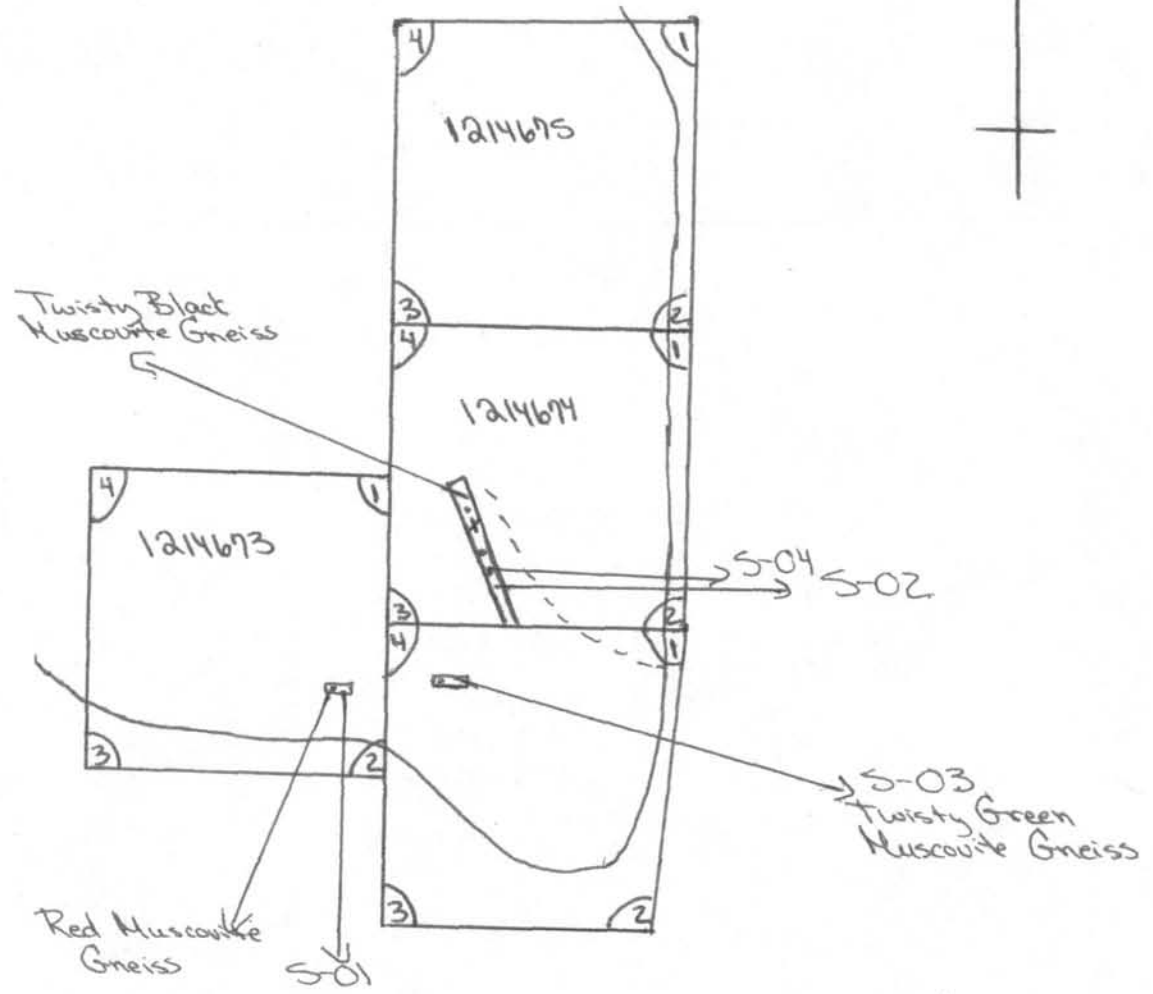
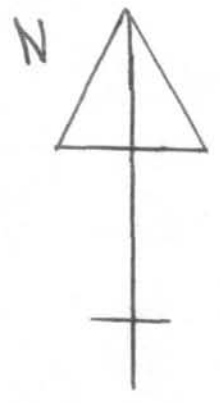


Stripping	Length (m)	Width (m)	Year
S-01	15	10	2004
S-02	200	20	2004
S-03	80	10	05
S-04	40	15	2005



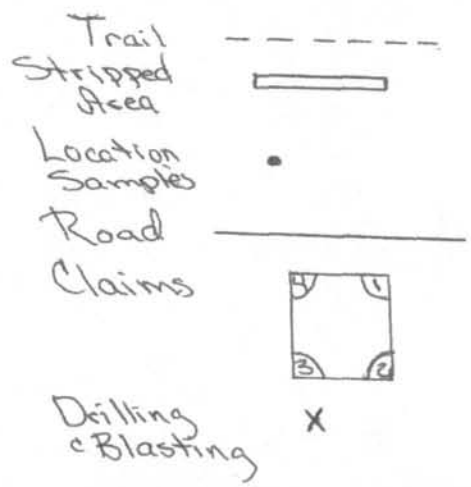
1113045 Ontario Inc.  
of McLaren's Bay Area Stone Quarries  
Client # 401198 10(2)(b)

Magnetic Declination.  
Used:  
Scale 1:10



Stripping	Length (m)	Width (m)
S-01	15	10
S-02	200	20

Samples	Location
R-01	S-01
B-01	S-02
B-01	S-03
B-01	S-04



1113045 Ontario Inc  
 01a McLaren's Bay Nica Stone Quarries  
 Client # 401198  
 10(a)(c) Year 2005