

Work Report #4  
Mining Claims #1247155 & #1247156  
Macgregor Township, G-062  
May 17, 2006  
By: Marc Ciccarelli

The two claims were staked by myself, Marc Ciccarelli, in June 2001. The claims are located in the southwest corner of Macgregor Township, Thunder Bay District South.

To access these claims, turn north from the Hwy 11/17 at the Hodder Avenue intersection. This is called Copenhagen Road and the claim access point is about 300 meters north of the main Highway where a gated gravel road heads eastward.

My work of stripping gravel and loose rock away from the surface of the bedrock has revealed several shatter zones filled with thin multi colored Quartz veins. Some of these Quartz veins show fillings with Calcite and Fluorite. Larger, flat lying Agate veins are near the surface in the Upper Gunflint Formation, Anemikie Series.

The previously worked areas (shown on Maps as Locations A, B, C, D) were all worked again, with the most effort put into Location C. At this location, the surface is rather flat and I found that the overburden consists of gravel, hard clay, then broken rock which is either cherty or mudstone. This mudstone seems to be covering and may be inter-layering the harder cherty rocks. There are several small veins of Quartz that travel in all directions through all the types of rock clay and sand. The overburden at the eastern edge of the trench seems to drop deeper and consists of well sorted and many unrelated and well rounded rocks. While shoveling through this clay I cut through green clay and red clay rocks (each about fist sized), which were found side-by-side packed in fine brown clay. A massive vein of Agate was found to lie in the unconformity between these cherty and grainy rocks at location C. The trench was dug to 15 feet long and 5 feet wide. Including the overburden the trench was dug to a depth of 3 feet. I found a few slightly larger Quartz crystals within open pockets in the bedrock. The trench is located about 5 feet from the side of a private roadway so I felt the need to refill the hole after I was finished working at the site. I don't wish to negatively affect the people who maintain the roadway as I plan to re-open some of these areas and dig away from the road.

Maps are included for the claim areas and I have also included several pictures of the rocks found and the areas worked.

Times and Dates of Manual Stripping

Sept. 17, 2005 5 hrs.  
Sept. 18, 2005 5 hrs.  
Sept. 24, 2005 6 hrs.  
Oct. 15, 2005 5 hrs.  
Oct. 16, 2005 6 hrs.  
Oct. 24, 2005 5 hrs.  
Apr. 22, 2006 6 hrs.  
Apr. 23, 2006 6 hrs.  
May 6, 2006 4 hrs.  
May 13, 2006 5 hrs.

Total Hours Worked = 53 hours

2.32282

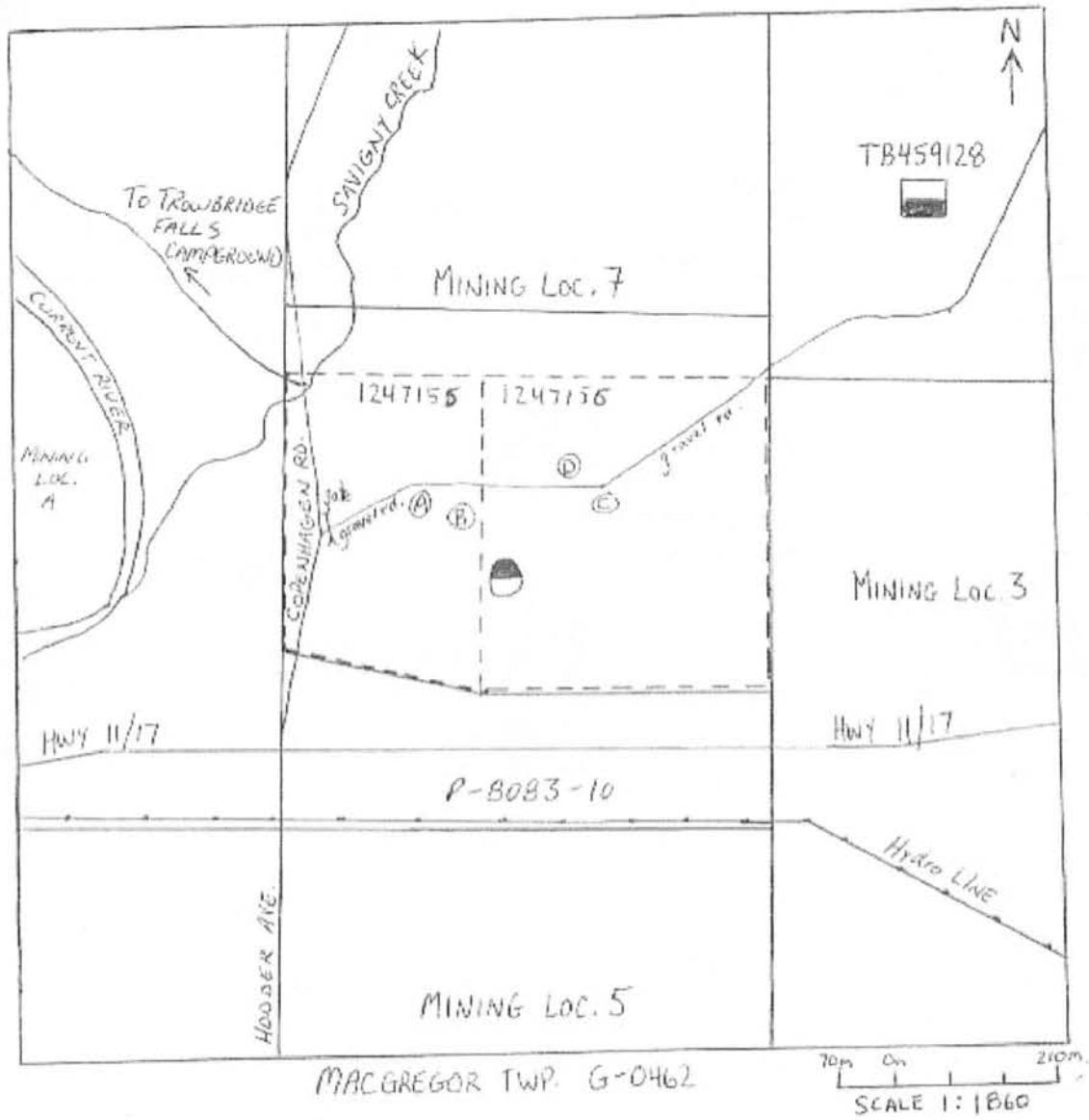


Thunder Bay  
Mining Division

MAY 18 2006

RECEIVED

12:55p  
dc.



SURFACE STRIPPING LOCATIONS

- (A) OUTCROP WITH AGATE AND QUARTZ
- (B) LARGER PARALLEL QUARTZ AND AMETHYST VEINS
- (C) SMALL TRENCH IN THICK AGATE VEINS
- (D) QUARTZ AND AMETHYST IN SHATTERED ROCK

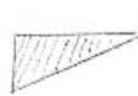
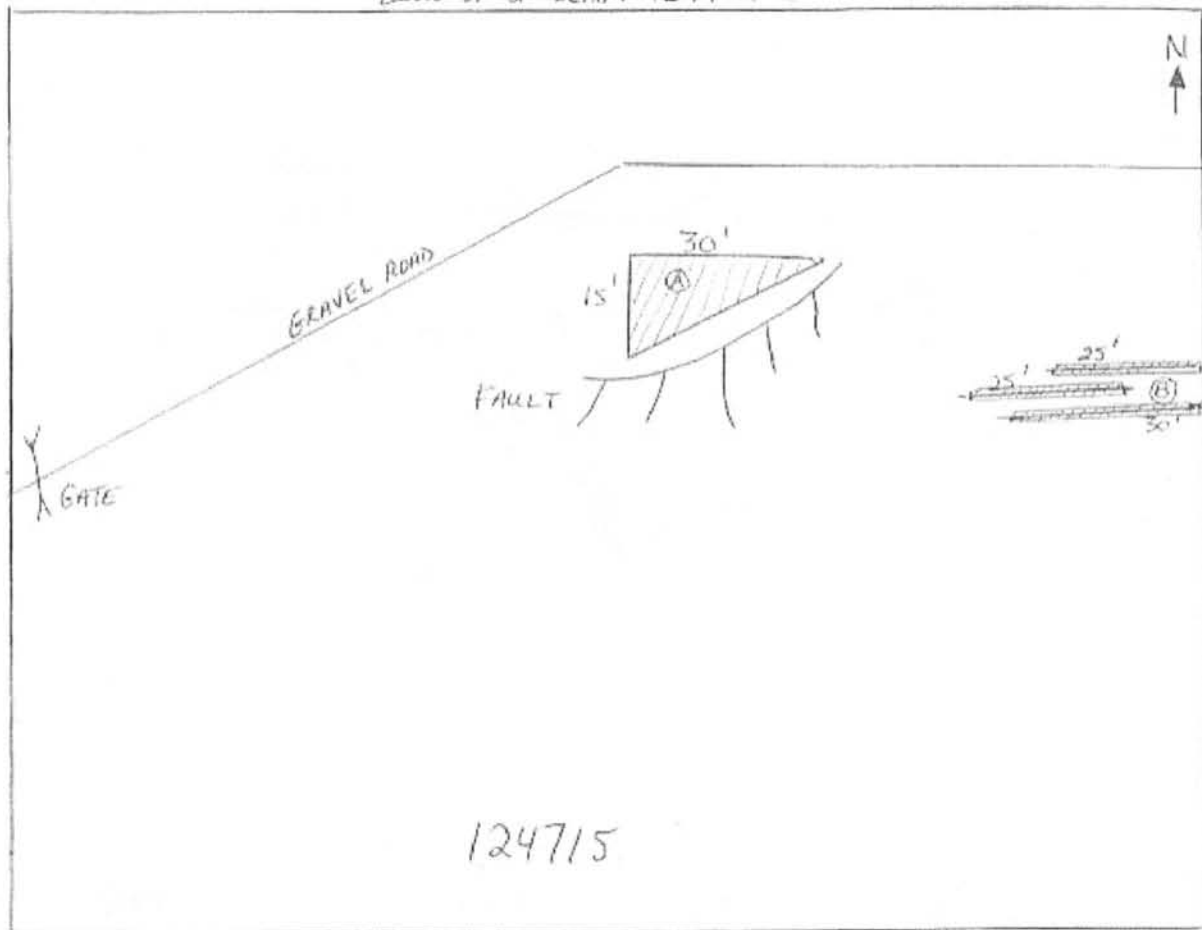
\* CLAIMS ARE LOCATED IN THE SOUTH PART OF MINING LOCATION 7

89° 30' LAT

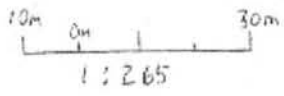
89° 10' LONG.



BLOW-UP OF CLAIM 124715



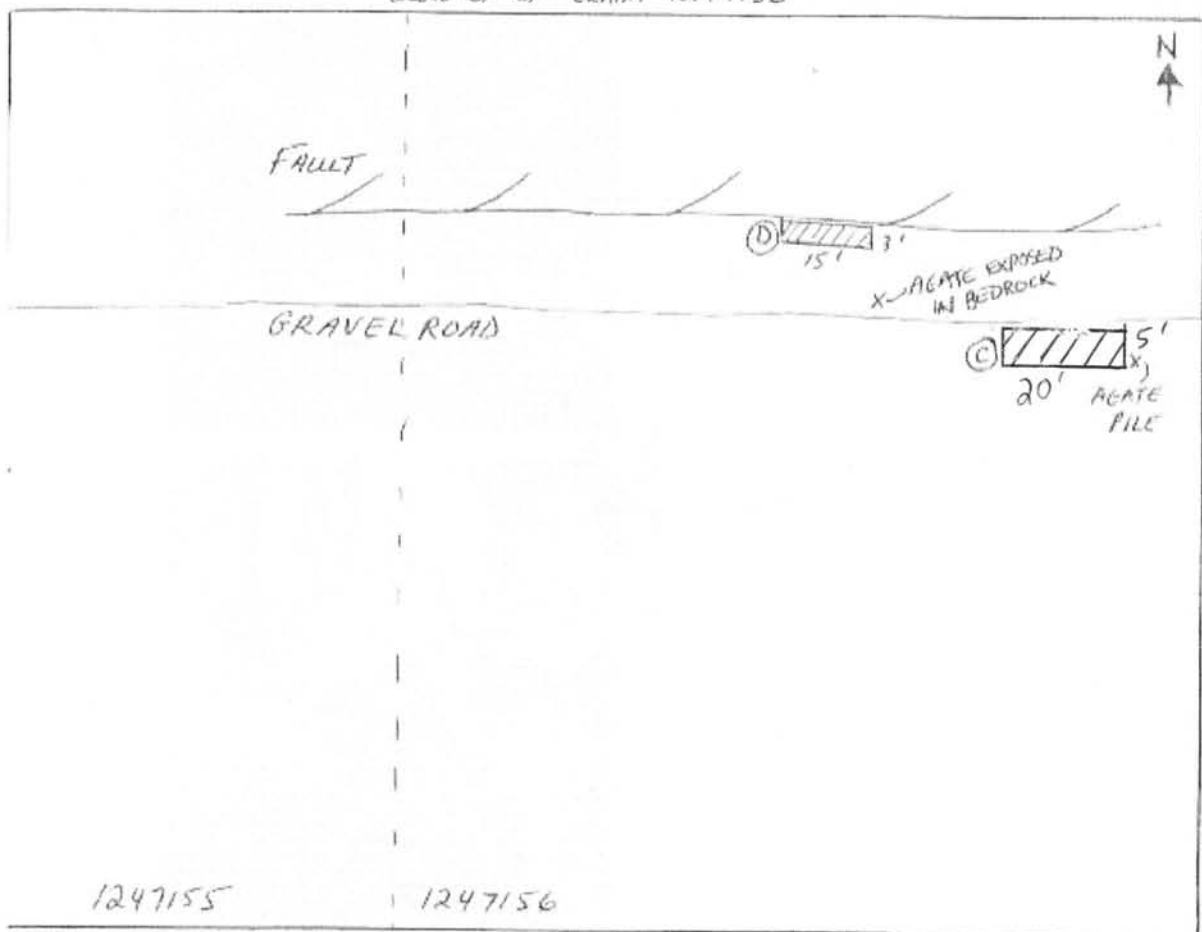
LOCATION (A) WAS STRIPPED DEEPER ON AGATE AND QUARTZ VEINS





LOCATION (B) WAS STRIPPED DEEPER AND LONGER ON QUARTZ, AMETHYST VEINS

RECEIVED  
MAY 23 2006  
GEOSCIENCE ASSESSMENT  
OFFICE

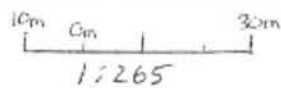
BLOW-UP OF CLAIM 1247156



STRIPPING LOCATIONS

-  (C) AGATE IN TRENCH AND PILE
-  (D) AMETHYST AND SOME AGATE IN NEW LOCATION.

X - AGATE IN BEDROCK EXPOSED.





LOCATION C



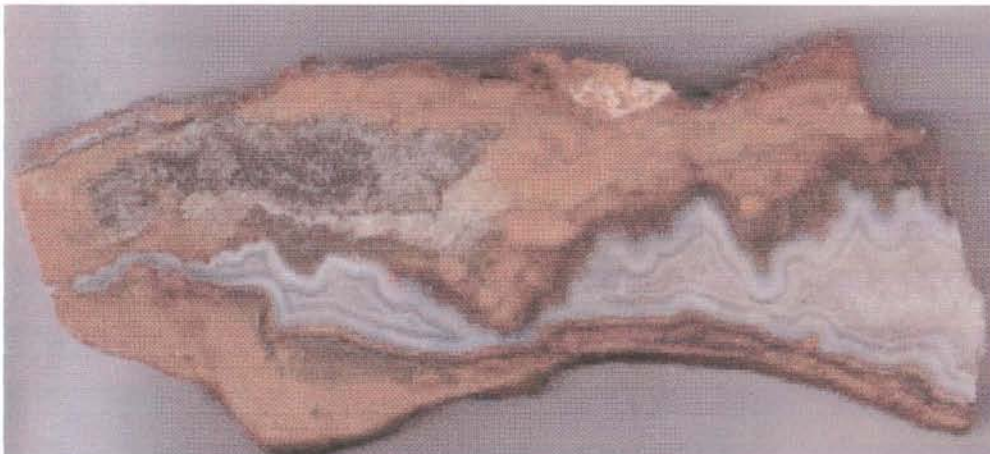
LOCATION C  
- AGATE VEIN IN BEDROCK



LOCATION C  
- AGATE



LOCATION A - AGATES  
- QUARTZ  
CRYSTALS  
FOUND  
(IN CHERT ROCKS)



LOCATION A  
- AGATE SLAB  
(IN GRANITOID)



LOCATION A - SMOKEY, AMETHYST AND  
OTHER COLOURED QUARTZ



LOCATION B  
- AMETHYST



LOCATION A - AGATE