

**THUNDER CREEK PROJECT**

**Outcrop**

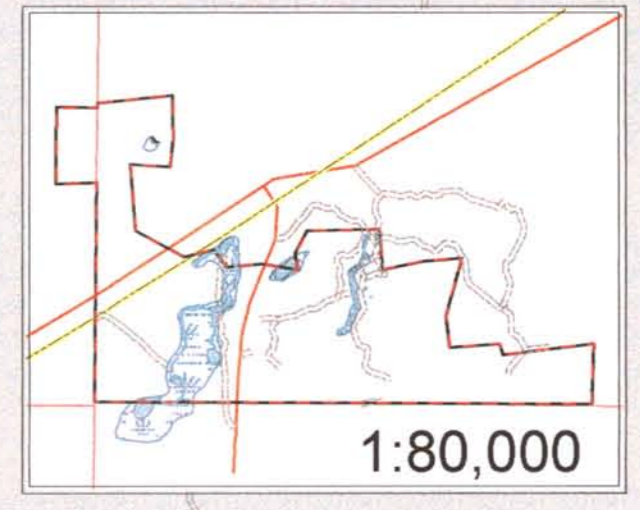
**Lithology**

- 2 Mafic Volcanic Rocks
- 6 Sedimentary Rocks
- 7 Alkalic Igneous Complex
- 11 Quartz-Feldspar Porphyritic Monzonite
- 12 Diabase Dyke
- Diabase Dykes
- Carbonate/Hematite alteration
- Non-Carbonate Alteration
- Shearzones
- Flint Boulders

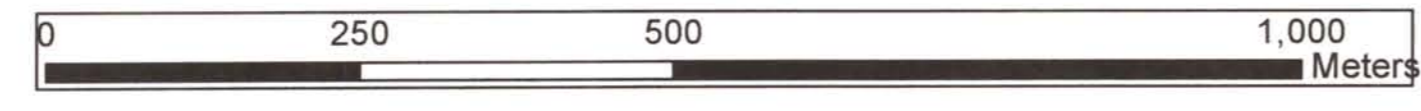
**Geology Interpretation**

**Lithology**

- Alkalic Igneous Complex (AIC)
- Tiadaie Assemblage Mafic Volcanic Rocks
- Porcupine Assemblage Sedimentary Rocks
- Quartz-Feldspar Porphyritic Monzonite Intrusive
- Timmins Gold "Main Zone"
- Trenches
- Property Boundary
- Township Line
- Highways
- Trails
- Rivers
- Beaver dam
- Lake
- Swamp



**THUNDER CREEK PROPERTY**  
**BAND-ORE RESOURCES OPTION**



1:6,000



PROPERTY GEOLOGY

Porcupine Mining District

NAD 83 ZONE 17

Date:  
November 1, 2004

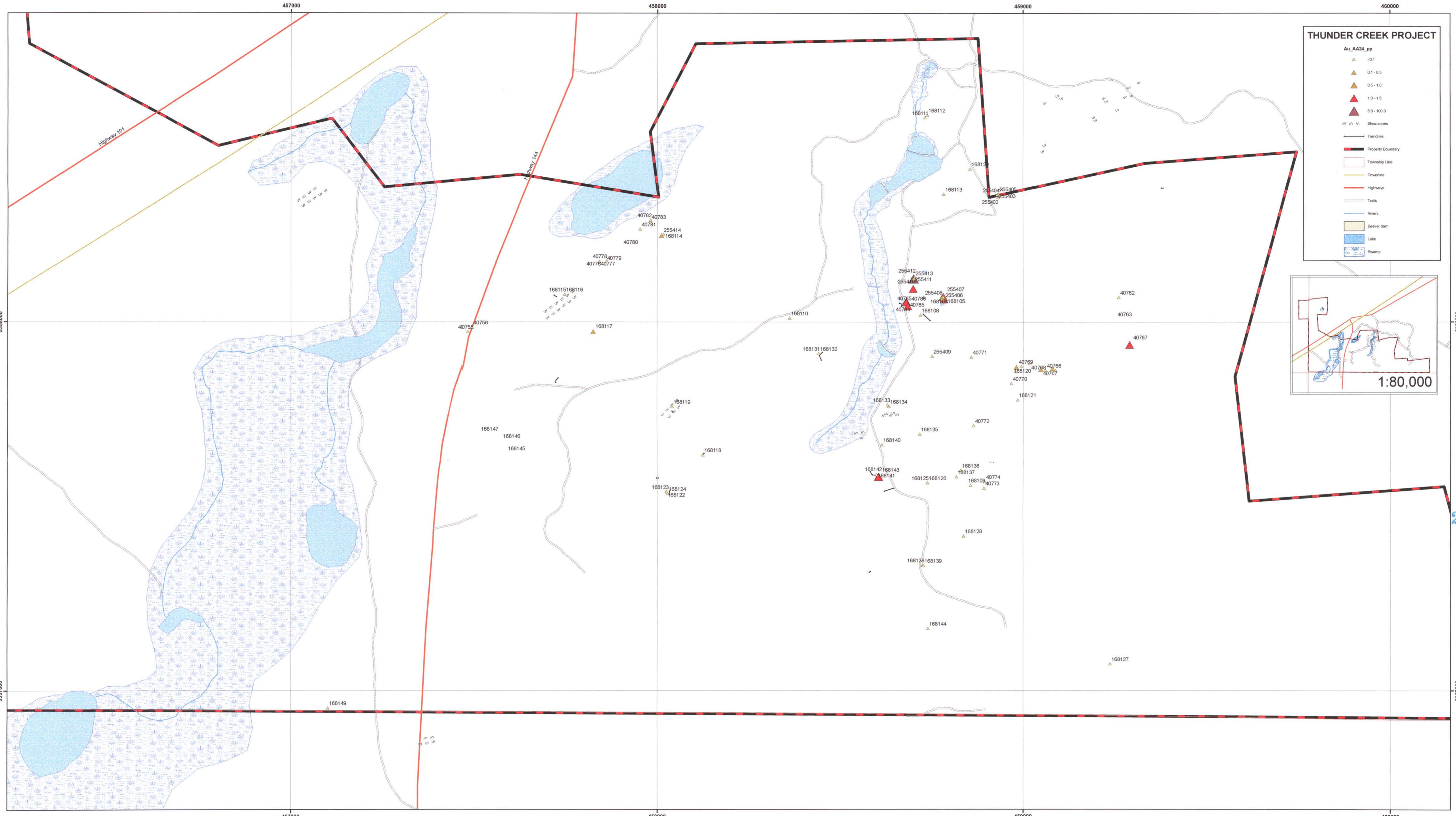
Figure :  
4

2.32408









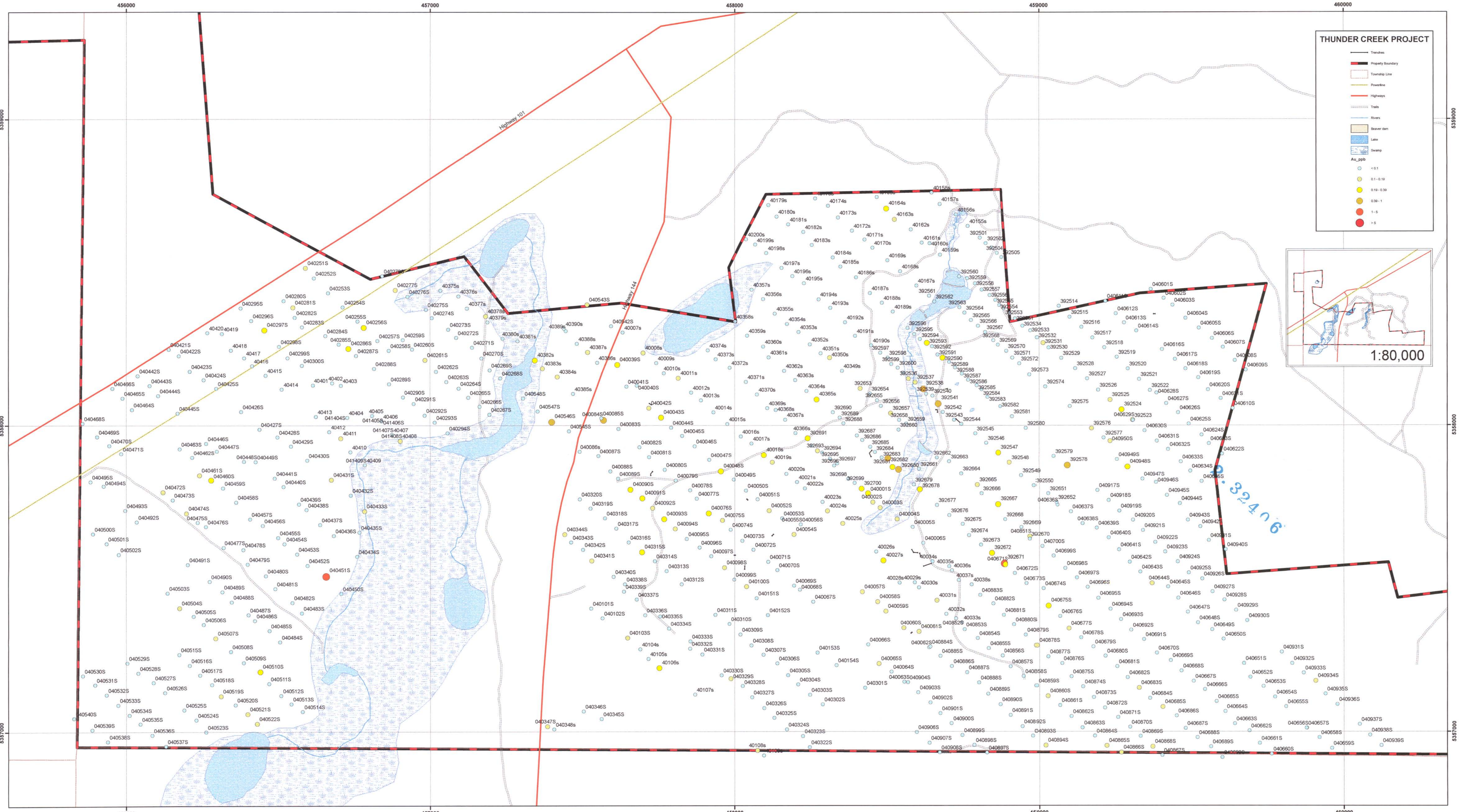
2.32406

**THUNDER CREEK PROPERTY**  
**BAND-ORE RESOURCES OPTION**

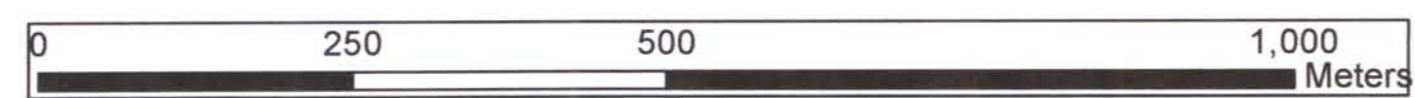


1:5,000	<b>ROCK SAMPLE LOCATION MAP</b>	
	Porcupine Mining District	
	NAD 83 ZONE 17	
Date: November 1, 2004	Figure :	<b>6</b>





**THUNDER CREEK PROPERTY  
BAND-ORE RESOURCES OPTION**



**LAKE SHORE GOLD CORP**

1:6,000



**MMI SOIL SAMPLE LOCATION MAP**

Porcupine Mining District

NAD 83 ZONE 17

Date:  
November 1, 2004

Figure :  
10