

OUTCROPS

- 15c Diabase, Nipissing
- 15c ap. Aplitic Dyke, Nipissing
- 15c, 18c Diabase - Gogonga Sediments Contact
- 15c Gogonga Sediments
- 15c Lorraine Sediments
- 18 Huronian Sediments unconsolidated
- 10c Archaean Granodiorite
- 3c Archaean Chlorite

MAP LEGEND

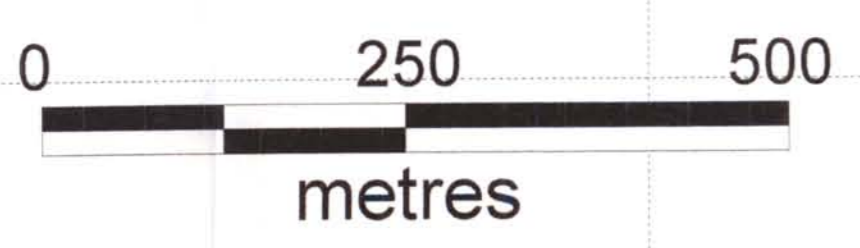
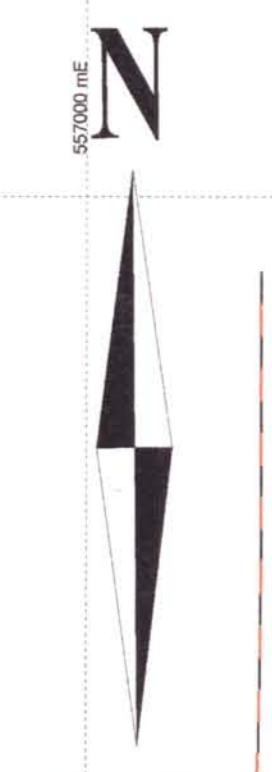
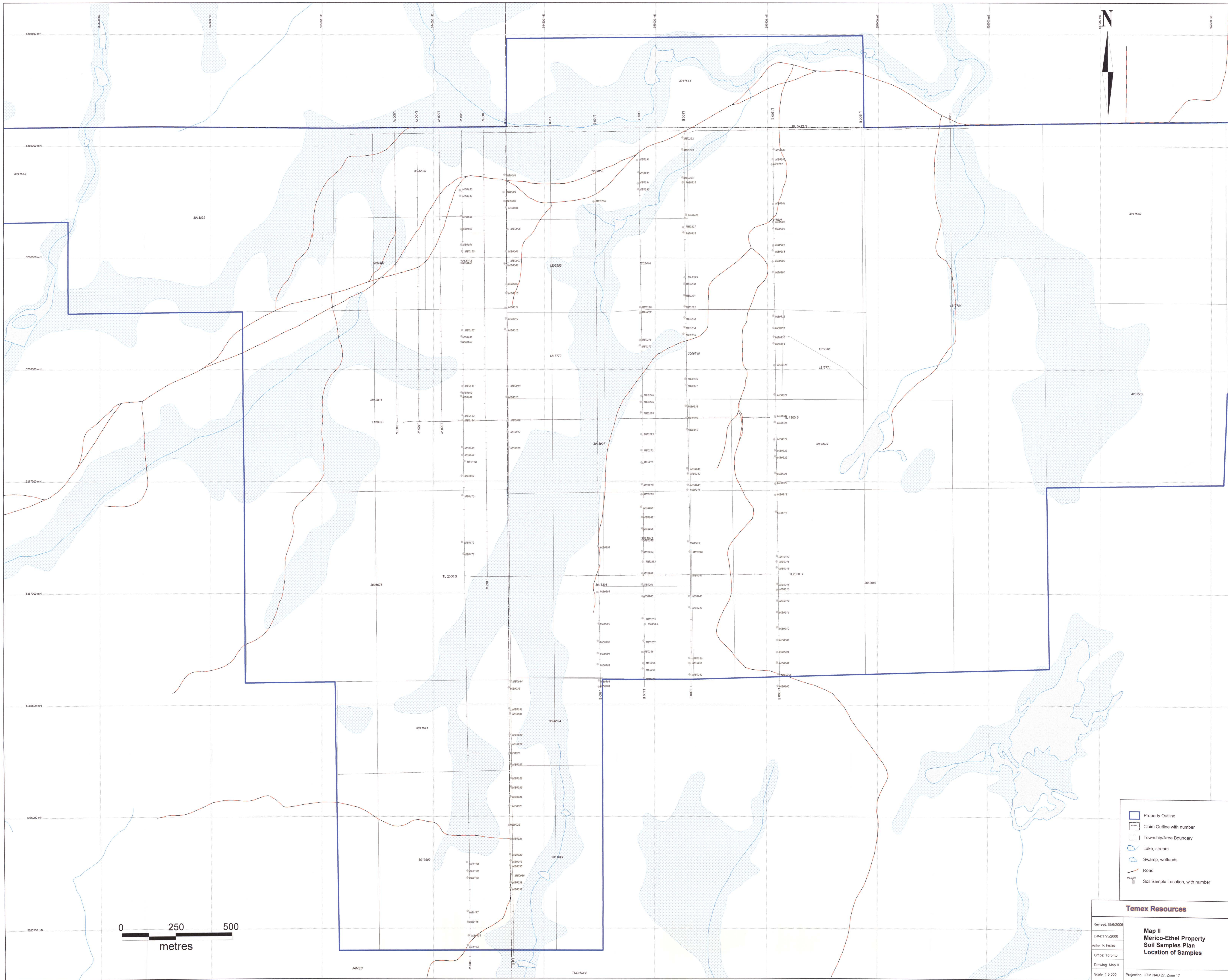
- 19 Mafic Intrusive Rocks - Nipissing
- 18 Huronian Sedimentary Rocks
- 10 Felcic to Intermediate Intrusive Suite
- 3 Mafic (to Intermediate) Metavolcanic Rocks/Intrusions
- Fault

MAP LEGEND	
Prospecting Sample with number	Structure
Geological Contacts	Contact
Faults	Fracture
Property Outline	Joint
Claim Outline with number	Vein
Trench	Dyke
Vein	Stria
Alteration &/or highly fractured rock	Lineation
Channel Sample	Joint in trench
Grid Line	Water
	Rubble

Temex Resources

Revised: 15/03/2005
 Date: 11/15/2005
 Author: K. Kellies
 Office: Toronto
 Drawing: Map 1
 Scale: 1:5,000
 Projection: UTM NAD 83, Zone 17

Map 1
Merico-Ethel Property
Prospecting Plan
Samples and Outcrops

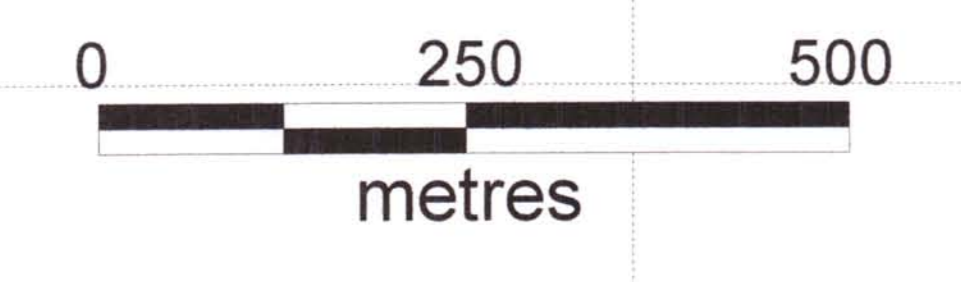
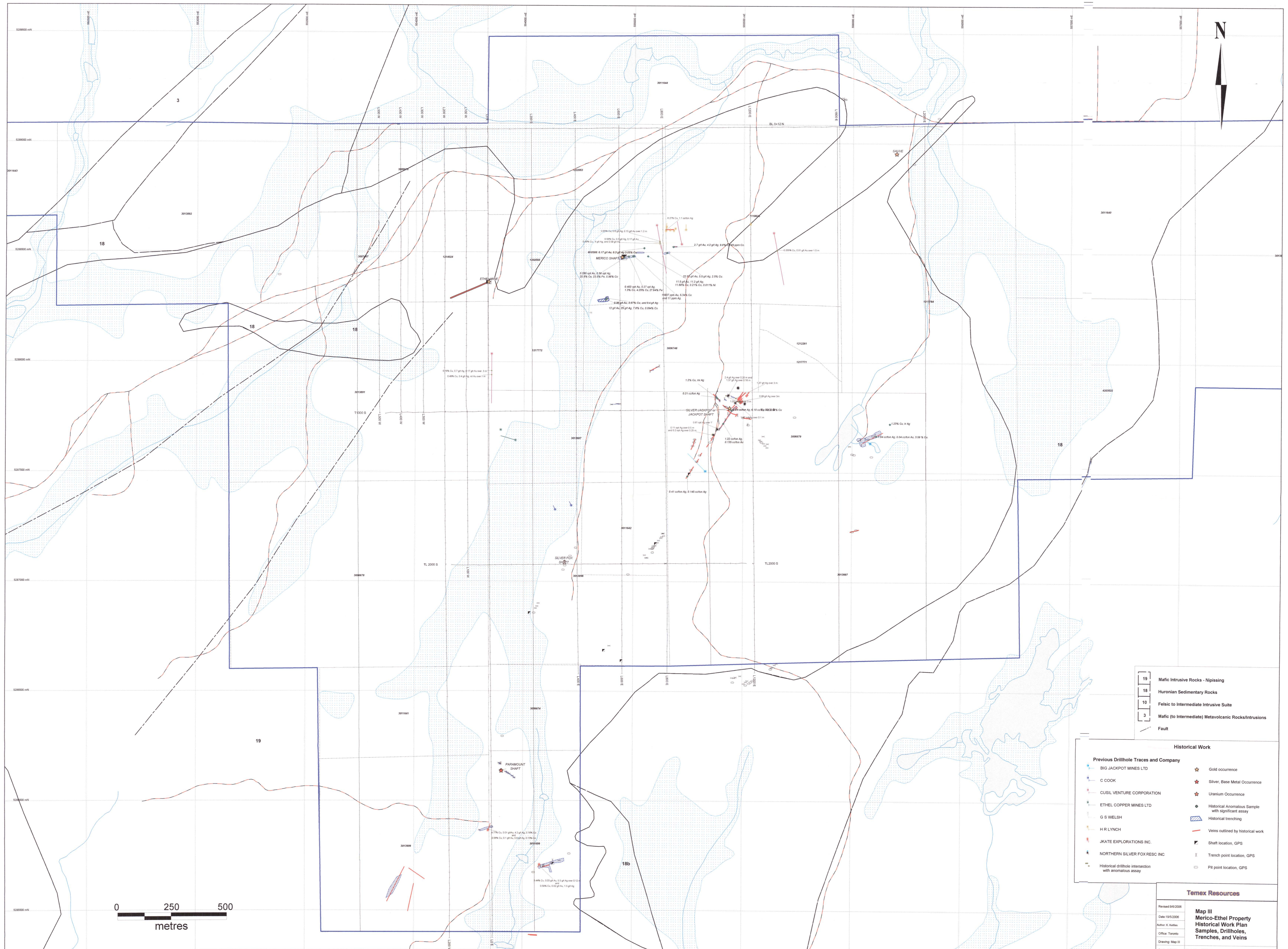


- Property Outline
- Claim Outline with number
- Township/Area Boundary
- Lake, stream
- Swamp, wetlands
- Road
- Soil Sample Location, with number

Temex Resources

Revised 15/6/2006
 Date: 17/5/2006
 Author: K. Pattis
 Office: Toronto
 Drawing: Map II
 Scale: 1:5,000 Projection: UTM NAD 27, Zone 17

**Map II
 Merico-Ethel Property
 Soil Samples Plan
 Location of Samples**



- 18 Mafic Intrusive Rocks - Nipissing
- 18 Huronian Sedimentary Rocks
- 10 Felsic to Intermediate Intrusive Suite
- 3 Mafic (to Intermediate) Metavolcanic Rocks/Intrusions
- Fault

Historical Work

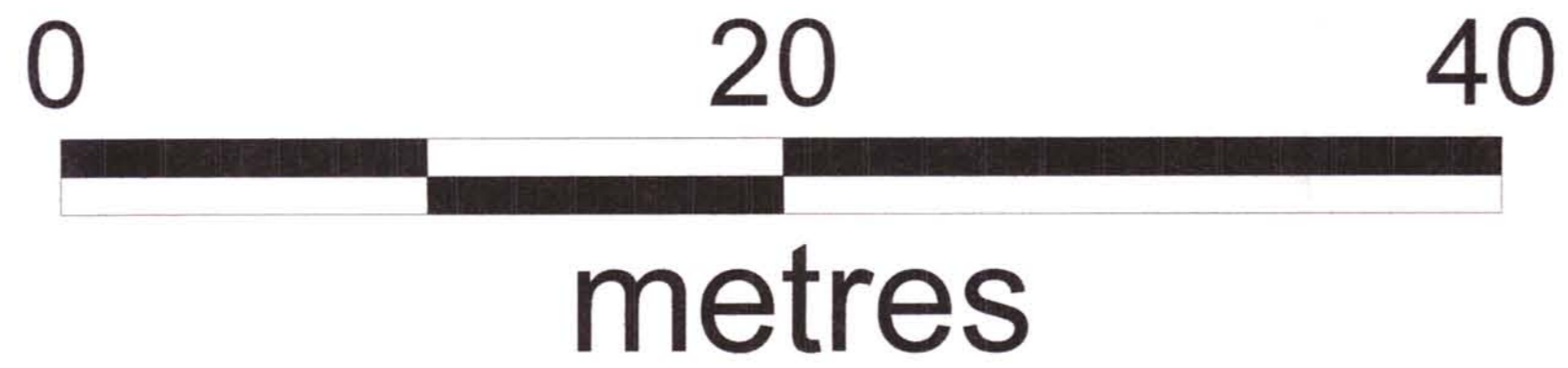
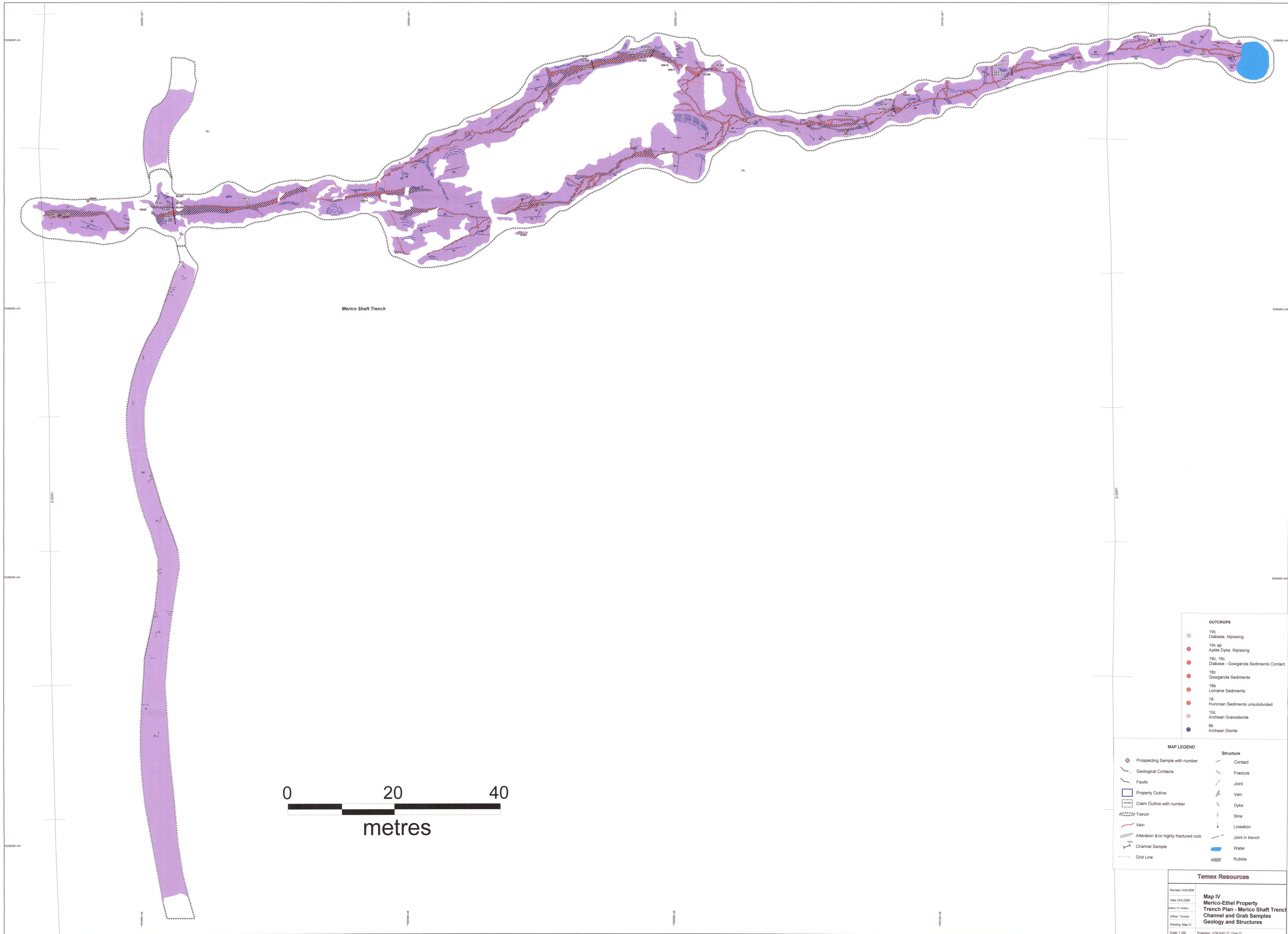
- Previous Drillhole Traces and Company**
- BIG JACKPOT MINES LTD
- C COOK
- CUSIL VENTURE CORPORATION
- ETHEL COPPER MINES LTD
- G S WELSH
- H R LYNCH
- JKATE EXPLORATIONS INC.
- NORTHERN SILVER FOX RESC INC
- Historical drillhole intersection with anomalous assay
- Gold occurrence
- Silver, Base Metal Occurrence
- Uranium Occurrence
- Historical Anomalous Sample with significant assay
- Historical trenching
- Veins outlined by historical work
- Shaft location, GPS
- Trench point location, GPS
- Pit point location, GPS

Temex Resources

Revised 9/6/2008
 Date 10/5/2008
 Author K. Kellie
 Office Toronto
 Drawing Map III
 Scale 1:5,000
 Projection UTM NAD 27, Zone 17

Map III
 Merico-Ethel Property
 Historical Work Plan
 Samples, Drillholes,
 Trenches, and Veins

32628



- OUTCROPS**
- 18c Diabase, Nipissing
 - 19c ap Aplite Dyke, Nipissing
 - 18c, 19c Diabase - Gowganda Sediments Contact
 - 18c Gowganda Sediments
 - 18b Lorraine Sediments
 - 18 Huronian Sediments unsubdivided
 - 10c Archean Granodiorite
 - 9b Archean Diorite

- MAP LEGEND**
- | | |
|--|--|
| <ul style="list-style-type: none"> Prospecting Sample with number Geological Contacts Faults Property Outline Claim Outline with number Trench Vein Alteration &/or highly fractured rock Channel Sample Grid Line | <p>Structure</p> <ul style="list-style-type: none"> Contact Fracture Joint Vein Dyke Stria Lineation Joint in trench Water Rubble |
|--|--|

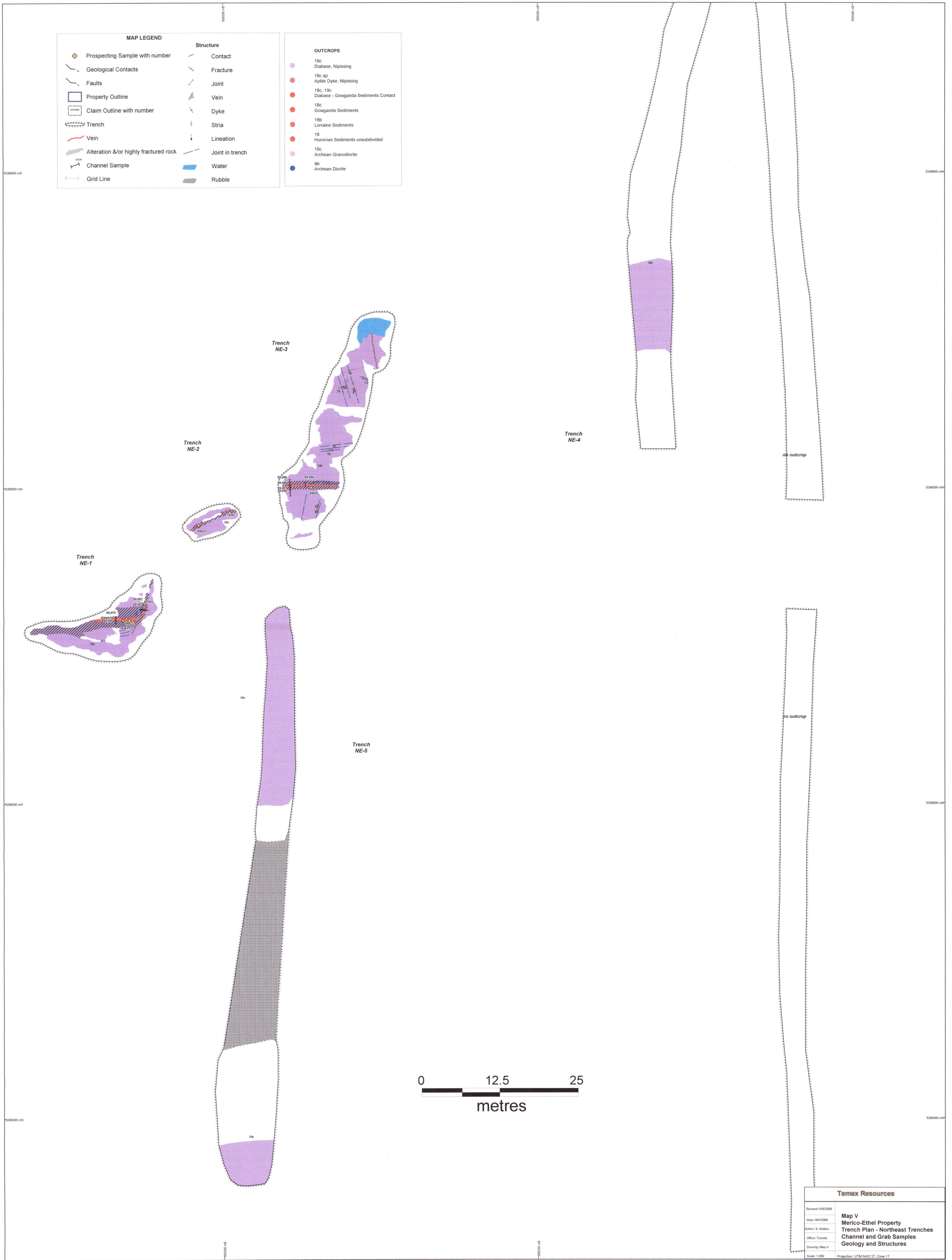
Temex Resources

Rev/Issd: 14/5/2006
 Date: 15/5/2006
 Author: K. Kuttel
 Office: Toronto
 Drawing: Map IV
 Scale: 1:200
 Projection: UTM NAD 27, Zone 17

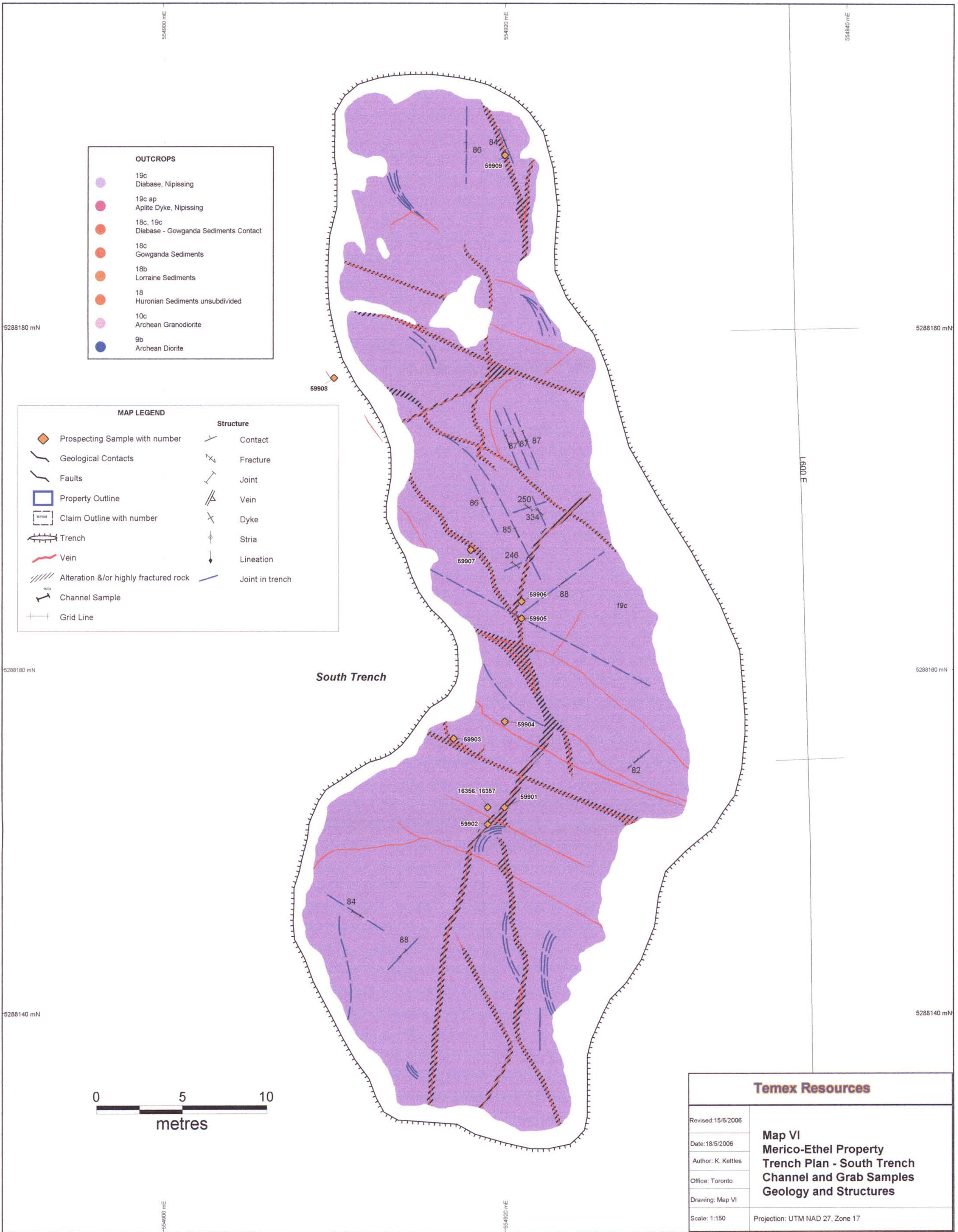
Map IV
Merico-Ethel Property
Trench Plan - Merico Shaft Trench
Channel and Grab Samples
Geology and Structures

MAP LEGEND	
	Prospecting Sample with number
	Geological Contacts
	Faults
	Property Outline
	Claim Outline with number
	Trench
	Vein
	Alteration &/or highly fractured rock
	Channel Sample
	Grid Line
	Contact
	Fracture
	Joint
	Vein
	Dyke
	Stria
	Lineation
	Joint in trench
	Water
	Rubble

OUTCROPS	
	19c Diabase, Nipissing
	19c ap Aplite Dyke, Nipissing
	18c, 19c Diabase - Gowganda Sediments Contact
	18c Gowganda Sediments
	18b Lorraine Sediments
	18 Huronian Sediments unsubdivided
	10c Archean Granodiorite
	9b Archean Diorite



Temex Resources	
Revised: 14/02/06	Map V Merico-Ethel Property Trench Plan - Northeast Trenches Channel and Grab Samples Geology and Structures
Date: 15/02/06	
Author: K. Kellin	
Office: Toronto	
Drawing: Map V	
Scale: 1:200	Projection: UTM NAD 27, Zone 17



2.32628