

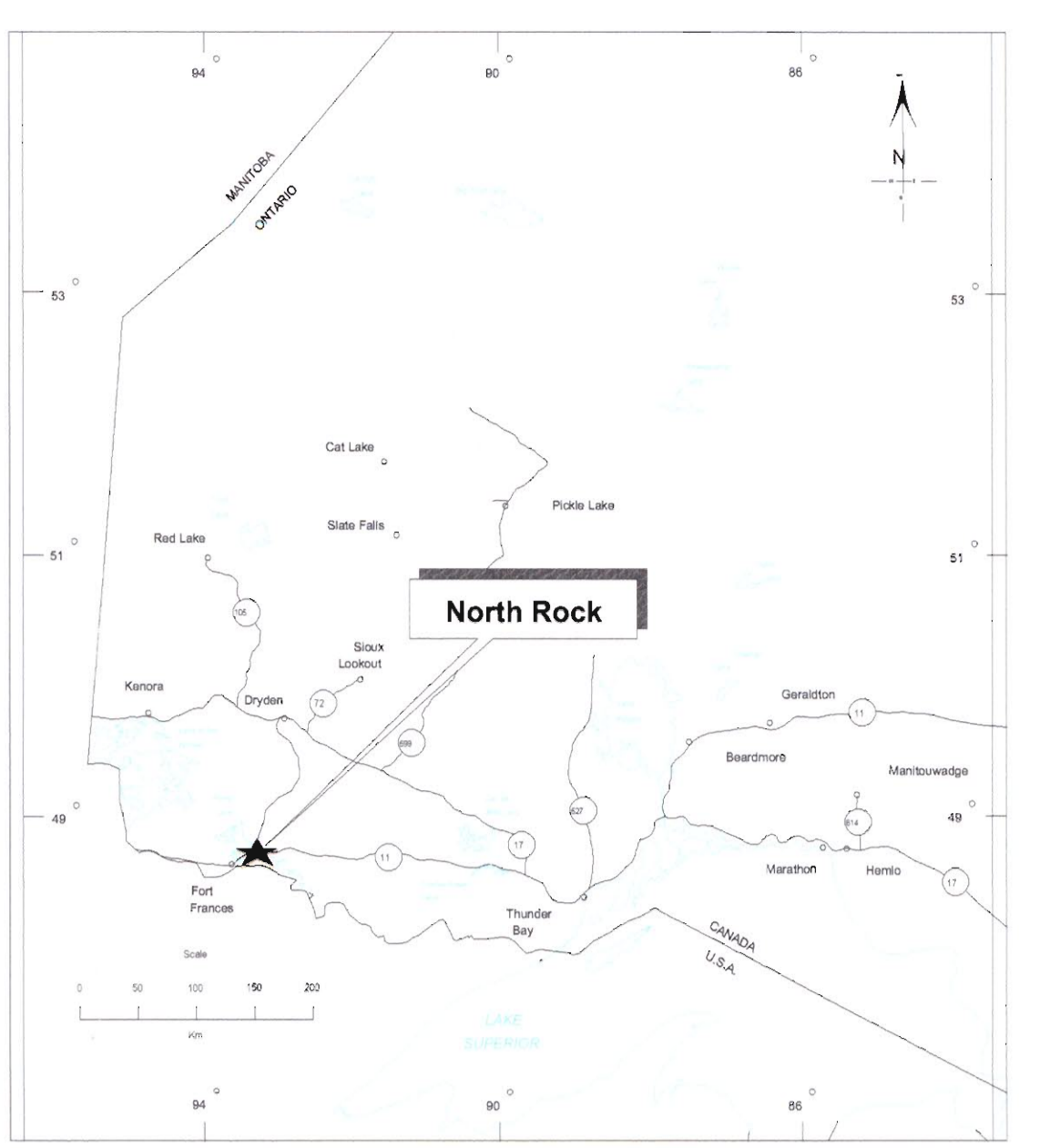
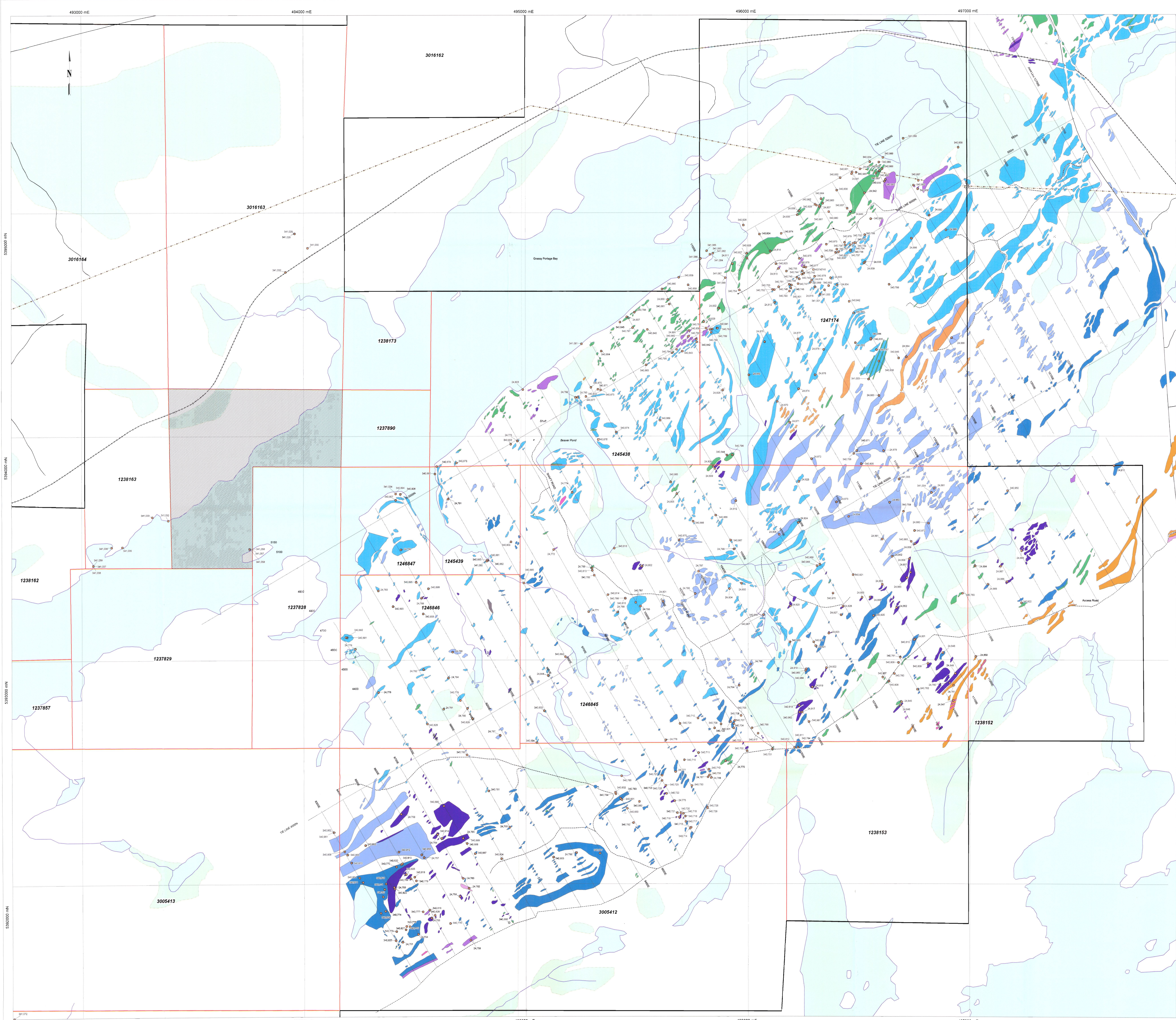
**MetalCORP Ltd.**

**North Rock  
Regional Geology and  
Compilation**

**Map 1**

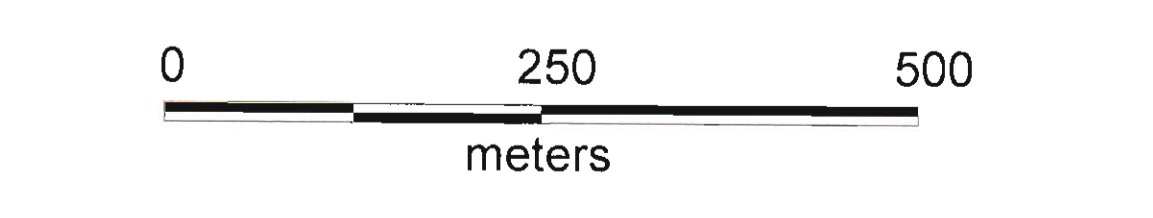
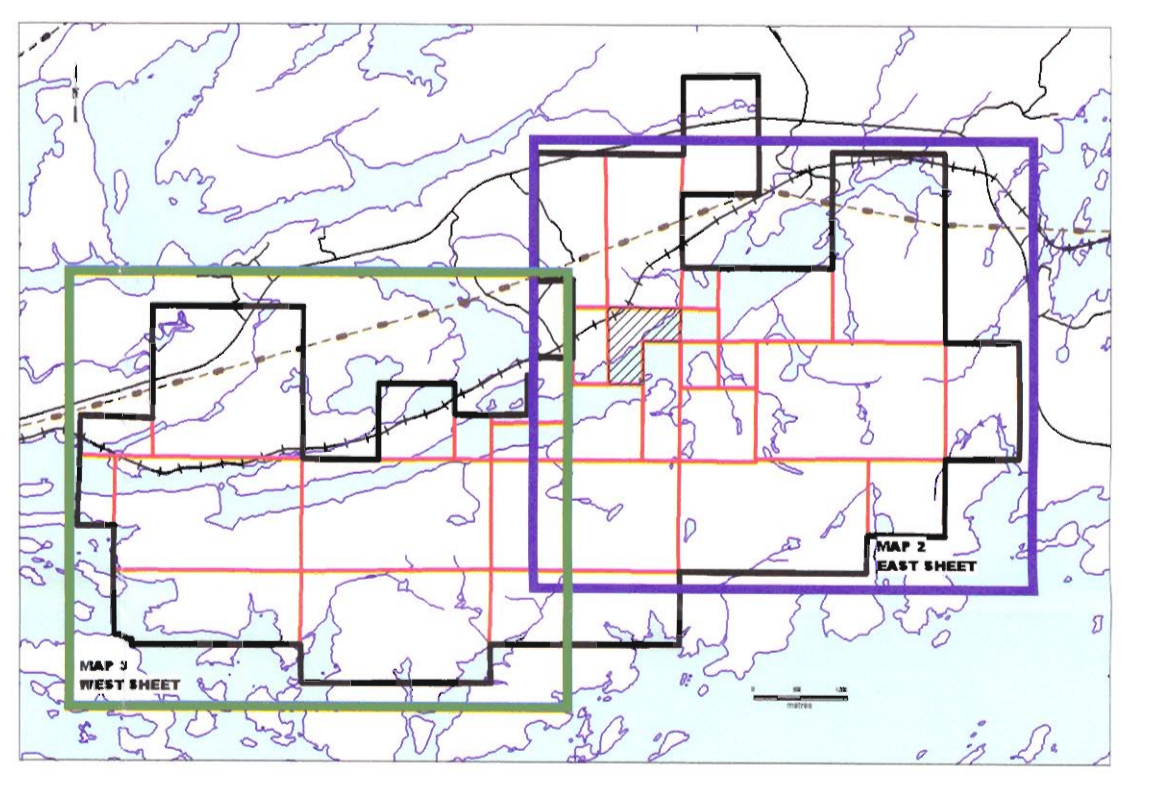
Date: 04/25/06  
 Author: Al MacTavish  
 Office: Thunder Bay  
 Drawing:  
 Scale: 1:15,000 Projection: NAD 83, Zone 15





- |  |                    |  |                          |
|--|--------------------|--|--------------------------|
|  | Diabase Dike       |  | Crania Grained Gabbro    |
|  | Granite            |  | Melara Gabbro            |
|  | Amphibole          |  | Micro Mesa Gabbro        |
|  | Serpentine/Sulfate |  | Mafic Dike               |
|  | Pyroxene/Picrite   |  | Mafic Metavolcanic Rocks |
|  | Gabbro             |  | Ultramafic               |

- |  |                           |
|--|---------------------------|
|  | North Rock Property Bound |
|  | Claim Boundaries          |
|  | Roads                     |
|  | Trails                    |
|  | Railway                   |
|  | Transmission Lines        |
|  | Township Boundary         |
|  | Lakes                     |
|  | Grab Samples & Number     |



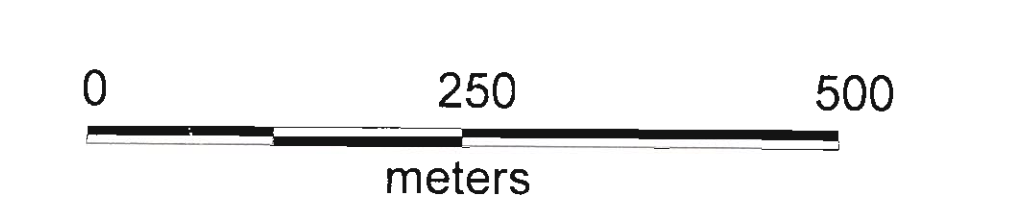
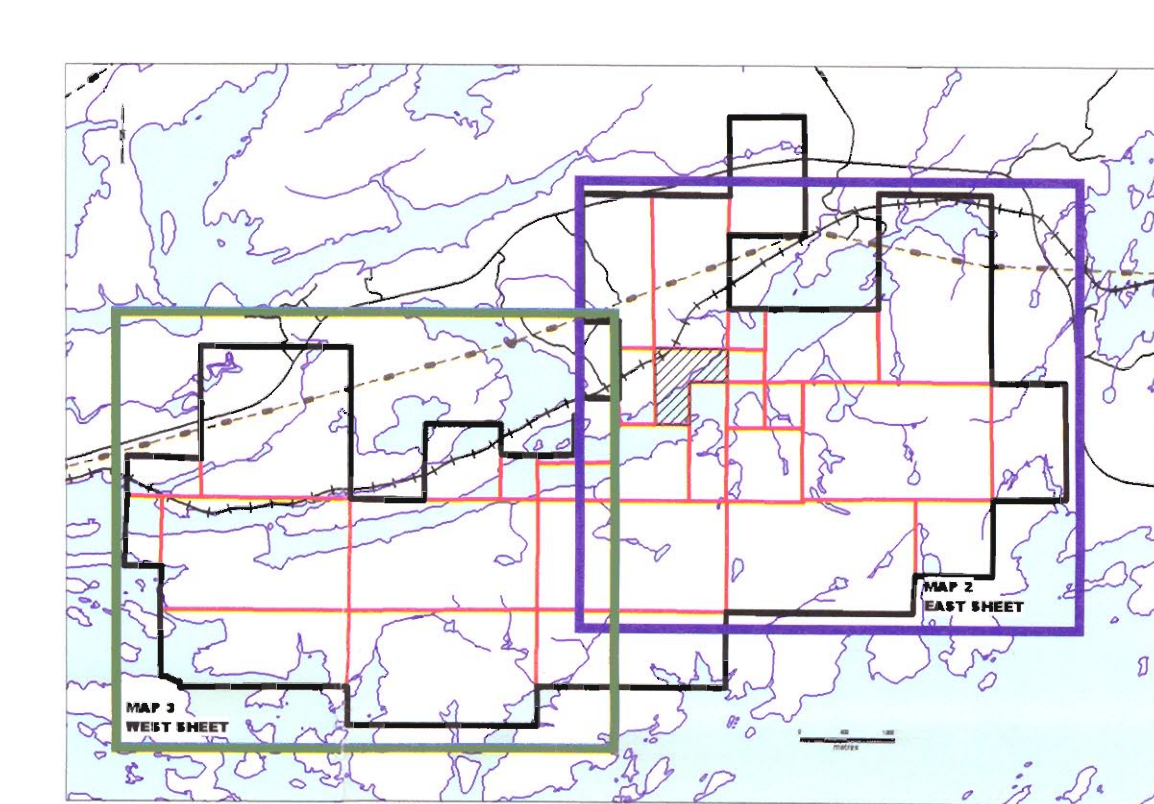
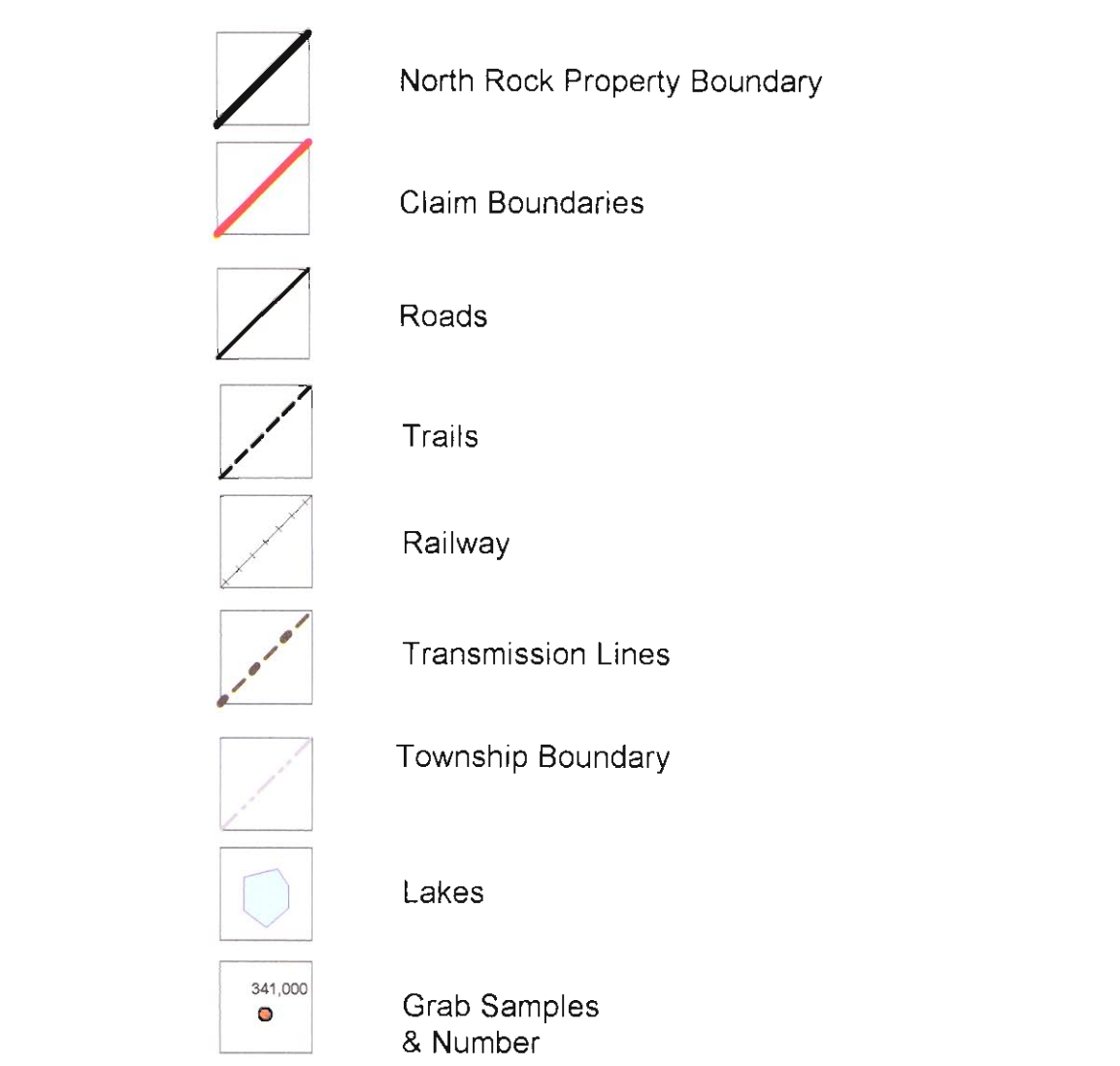
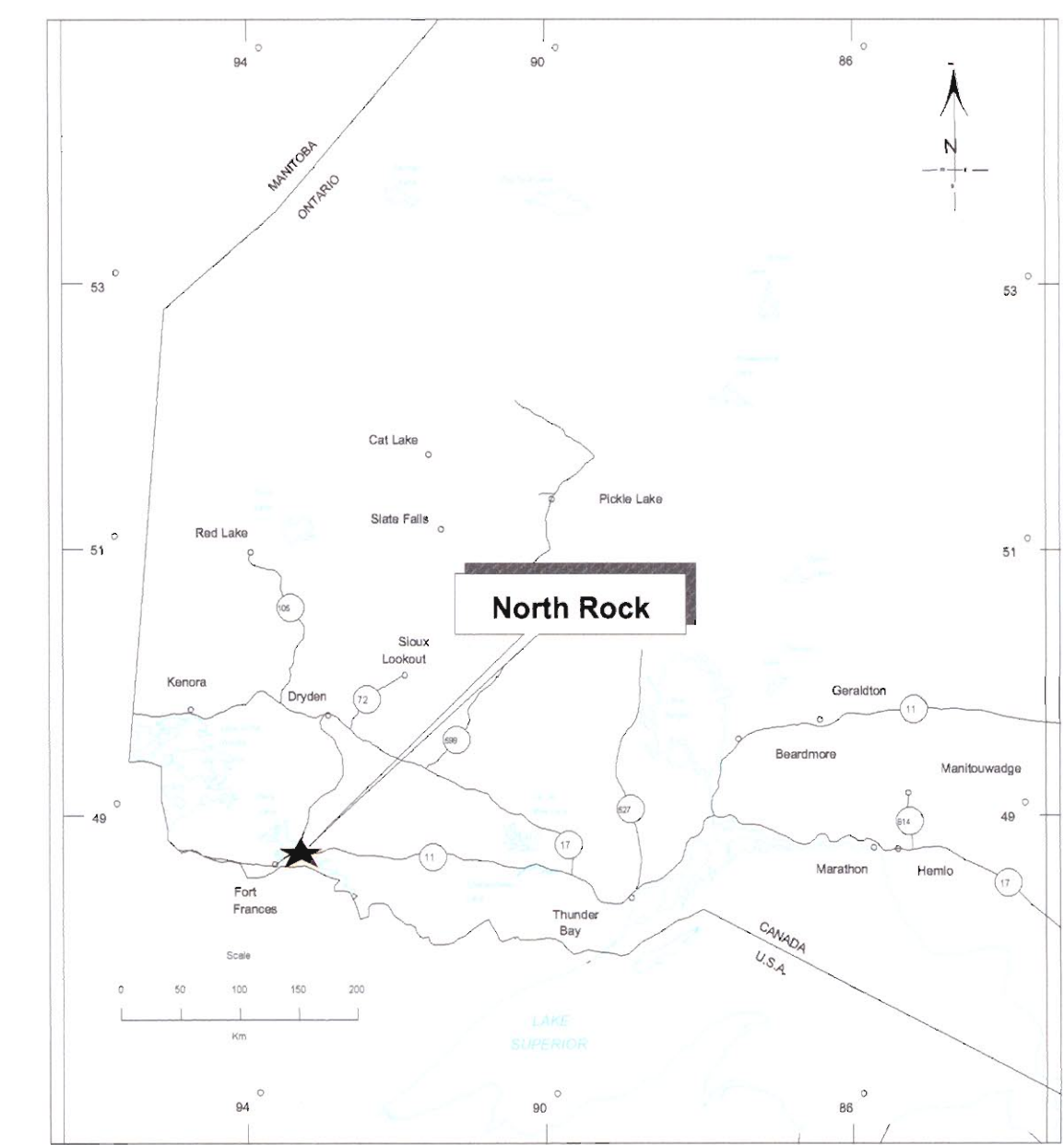
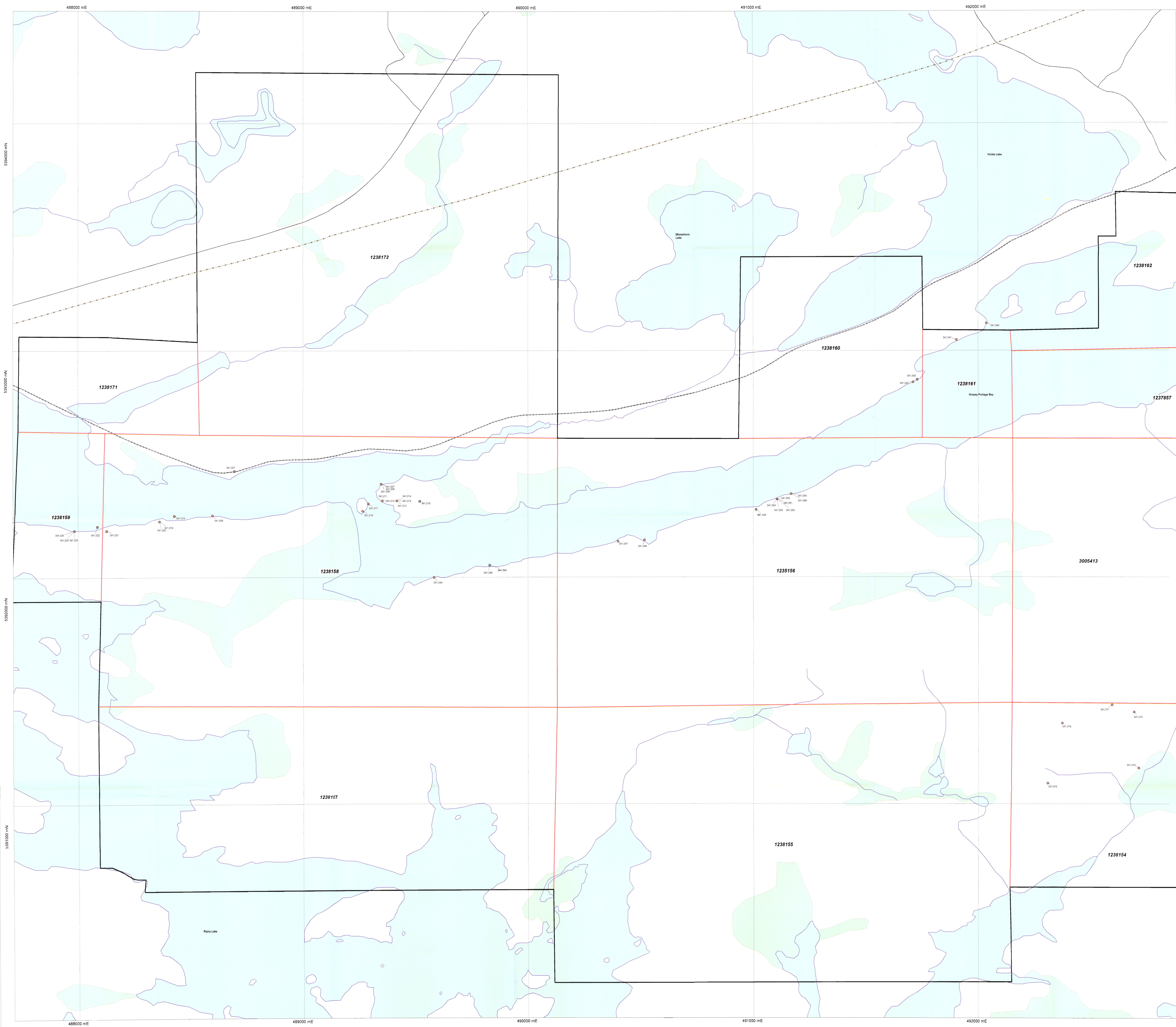
**MetalCORP**

**North Rock  
Grab Samples  
2005 Summer Program**

**Map 2**

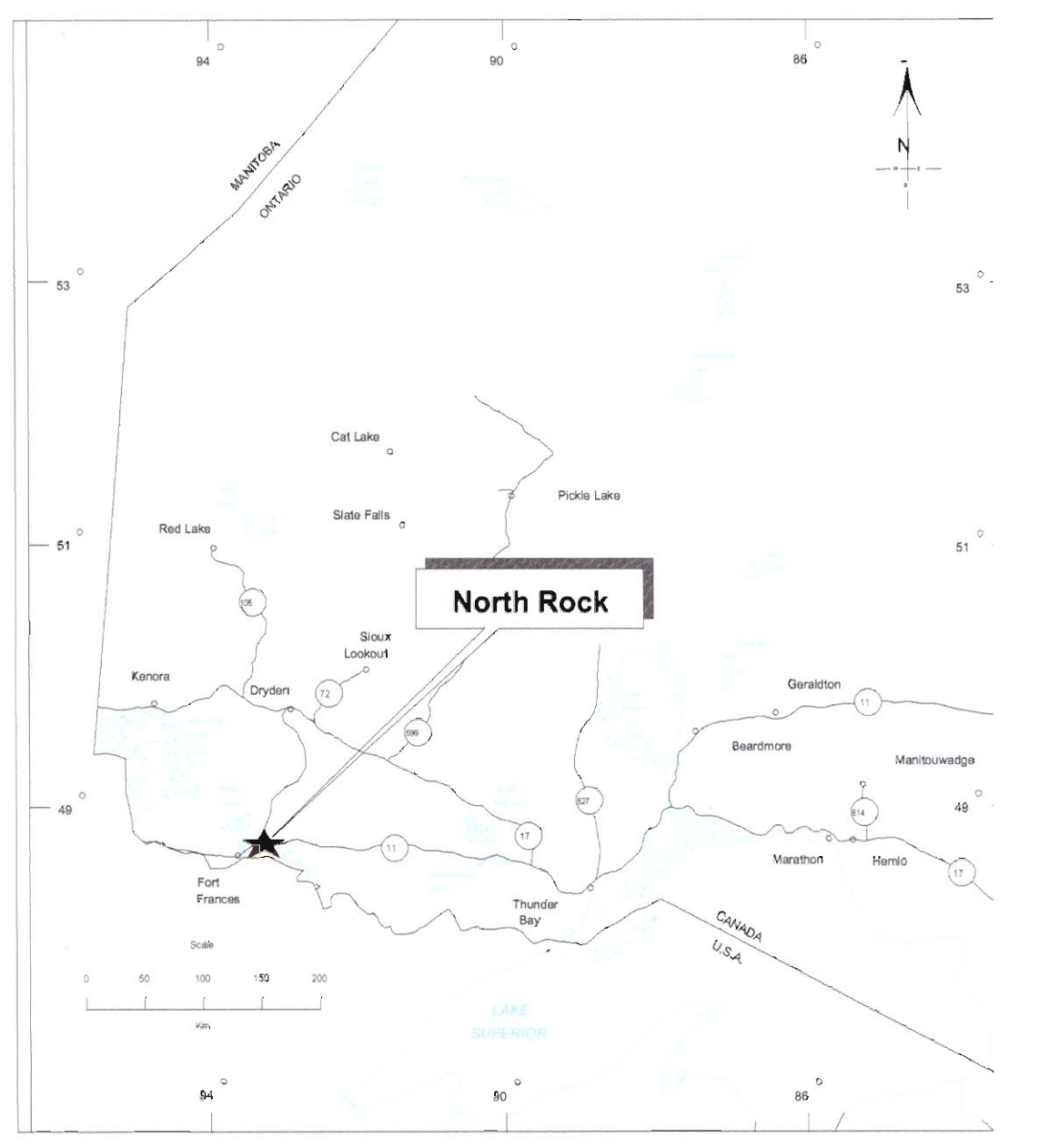
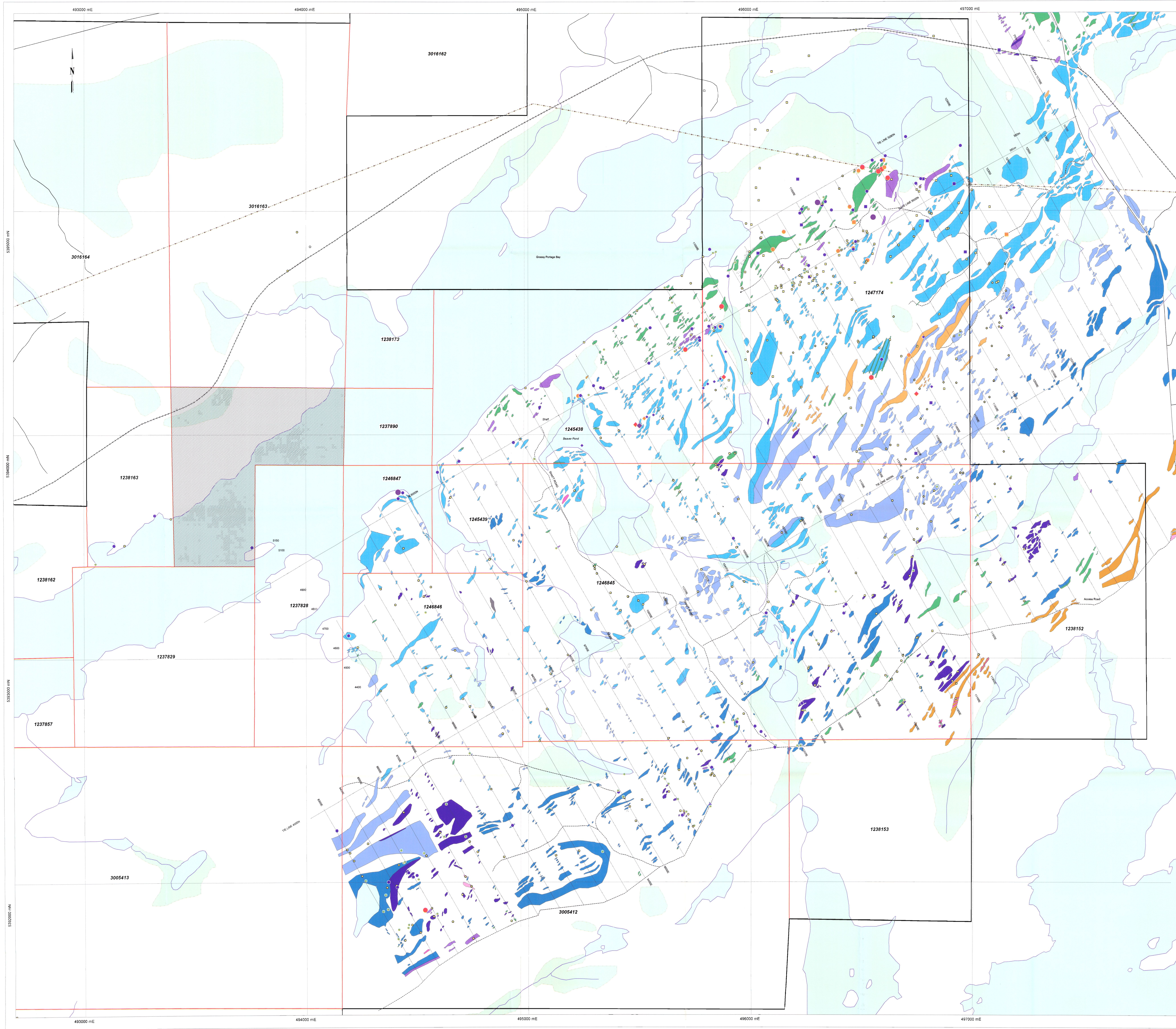
Date: 04/25/06  
 Author: J.M. MacTavish  
 Office: Thunder Bay  
 Drawing:  
 Scale: 1:5,000 Projection: NAD 83, Zone 15





<b>MetalCORP</b>	
<b>North Rock Grab Samples 2005 Summer Program</b>	
<b>Map 3</b>	
Date: 04/25/06	Author: Al MacTavish
Office: Thunder Bay	
Scale: 1:5,000	Projection: NAD 83, Zone 15

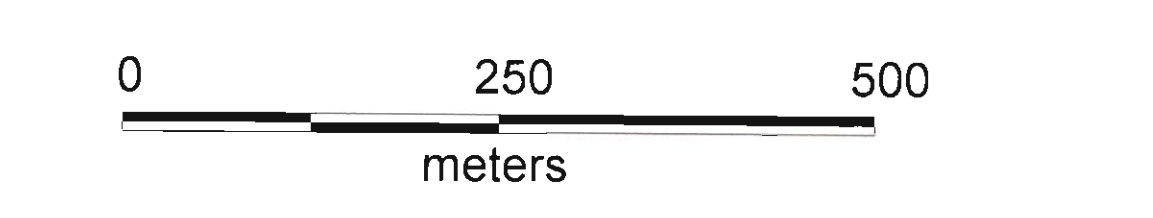
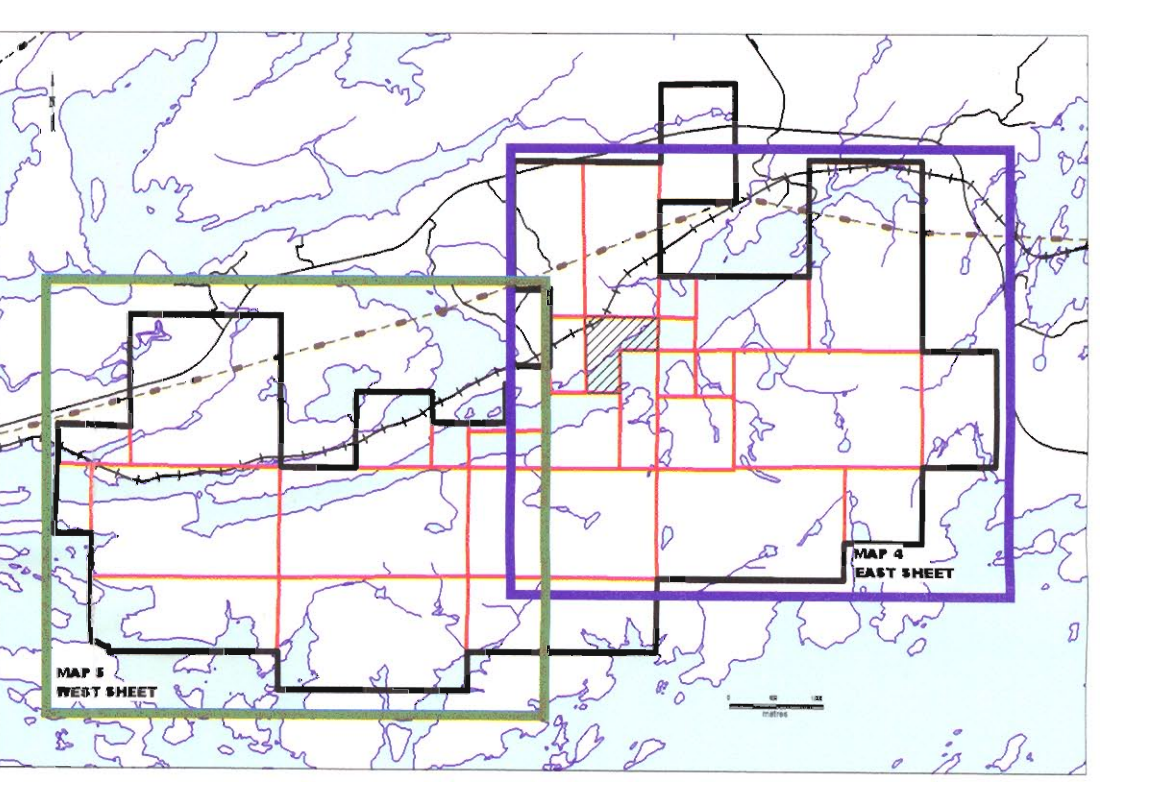




- |  |                    |  |                          |
|--|--------------------|--|--------------------------|
|  | Dabase Dike        |  | Coarse Grained Gabbro    |
|  | Granite            |  | Medium Gabbro            |
|  | Anorthosite        |  | Micro Mafic Gabbro       |
|  | Sericite Schist    |  | Mafic Dike               |
|  | Pyroxenite/Picrite |  | Mafic Metavolcanic Rocks |
|  | Gabbro             |  | Ultramafic               |

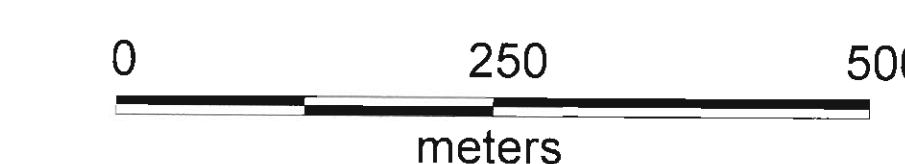
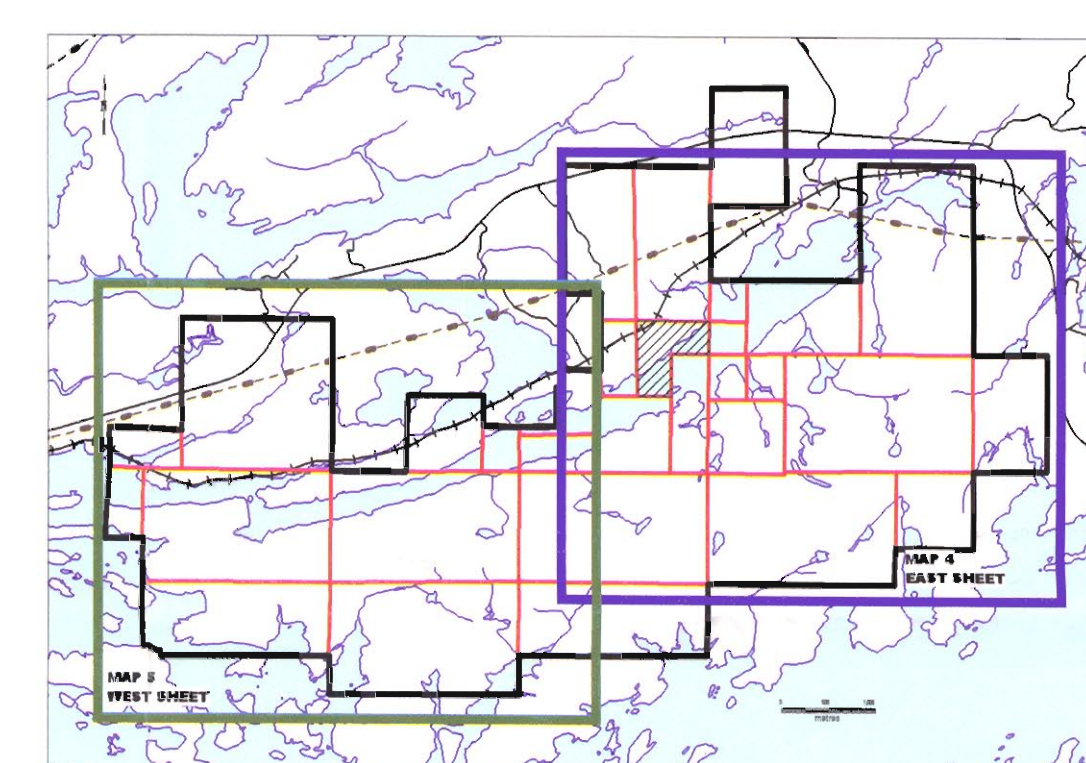
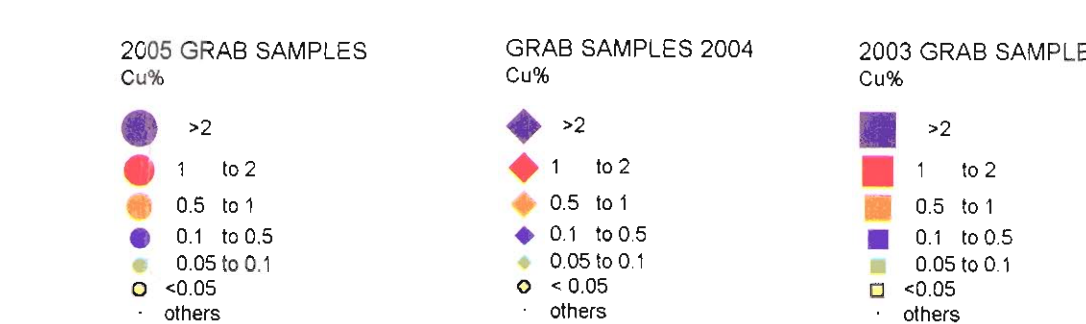
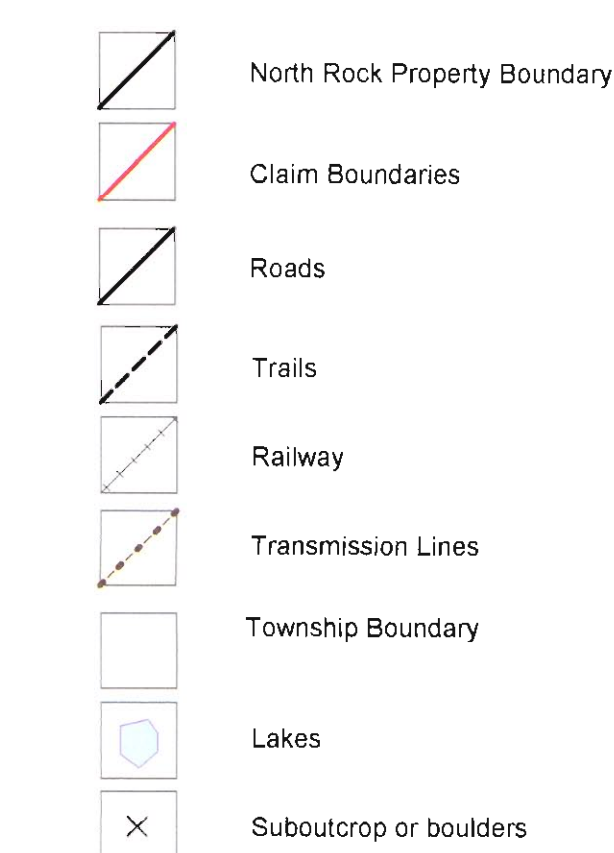
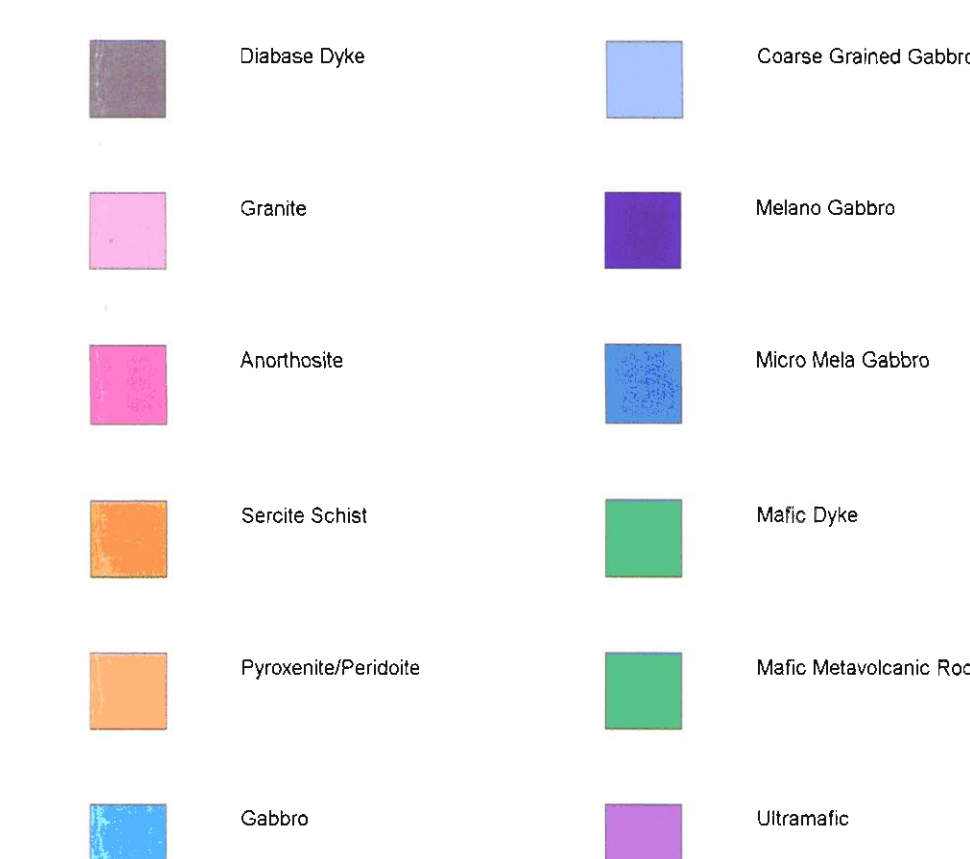
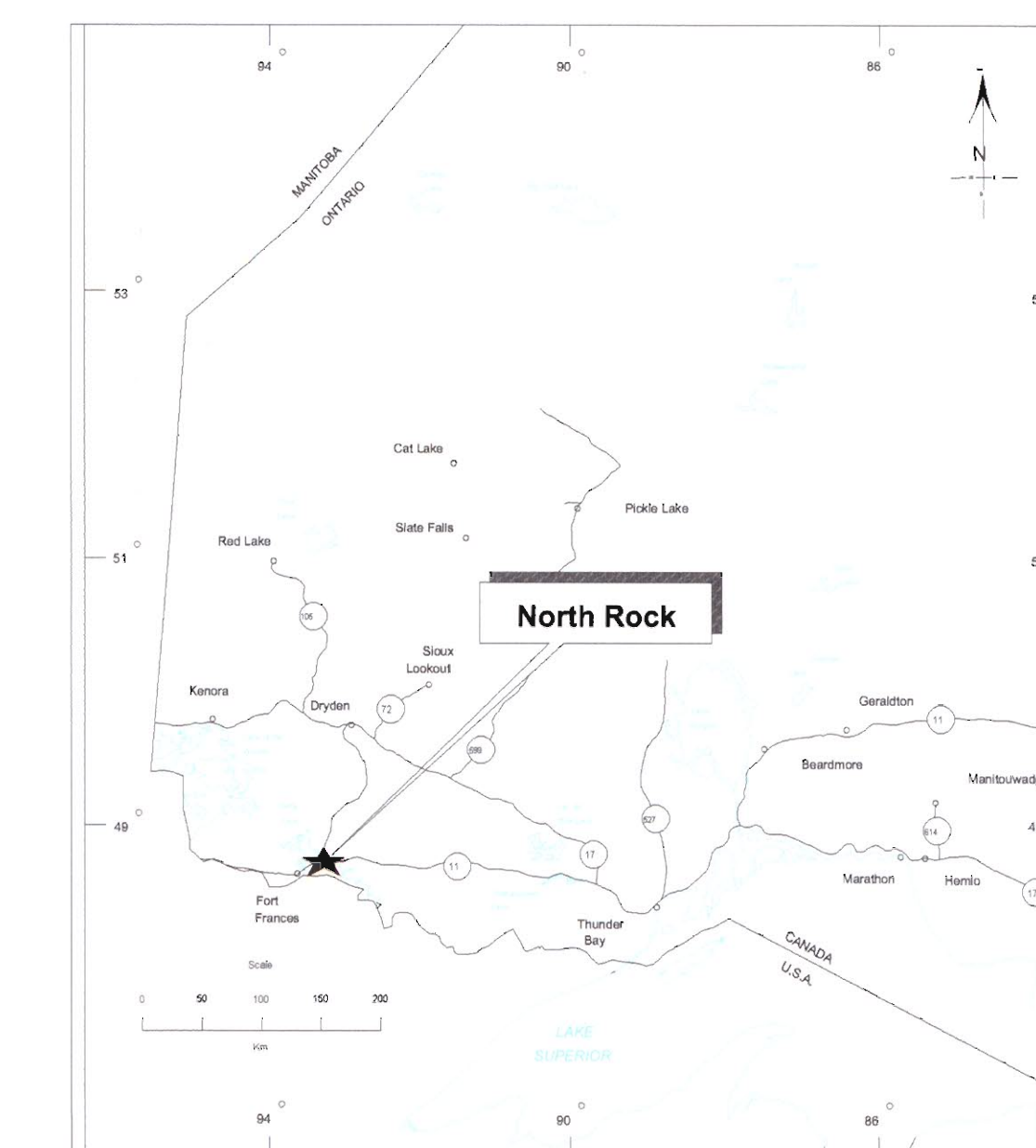
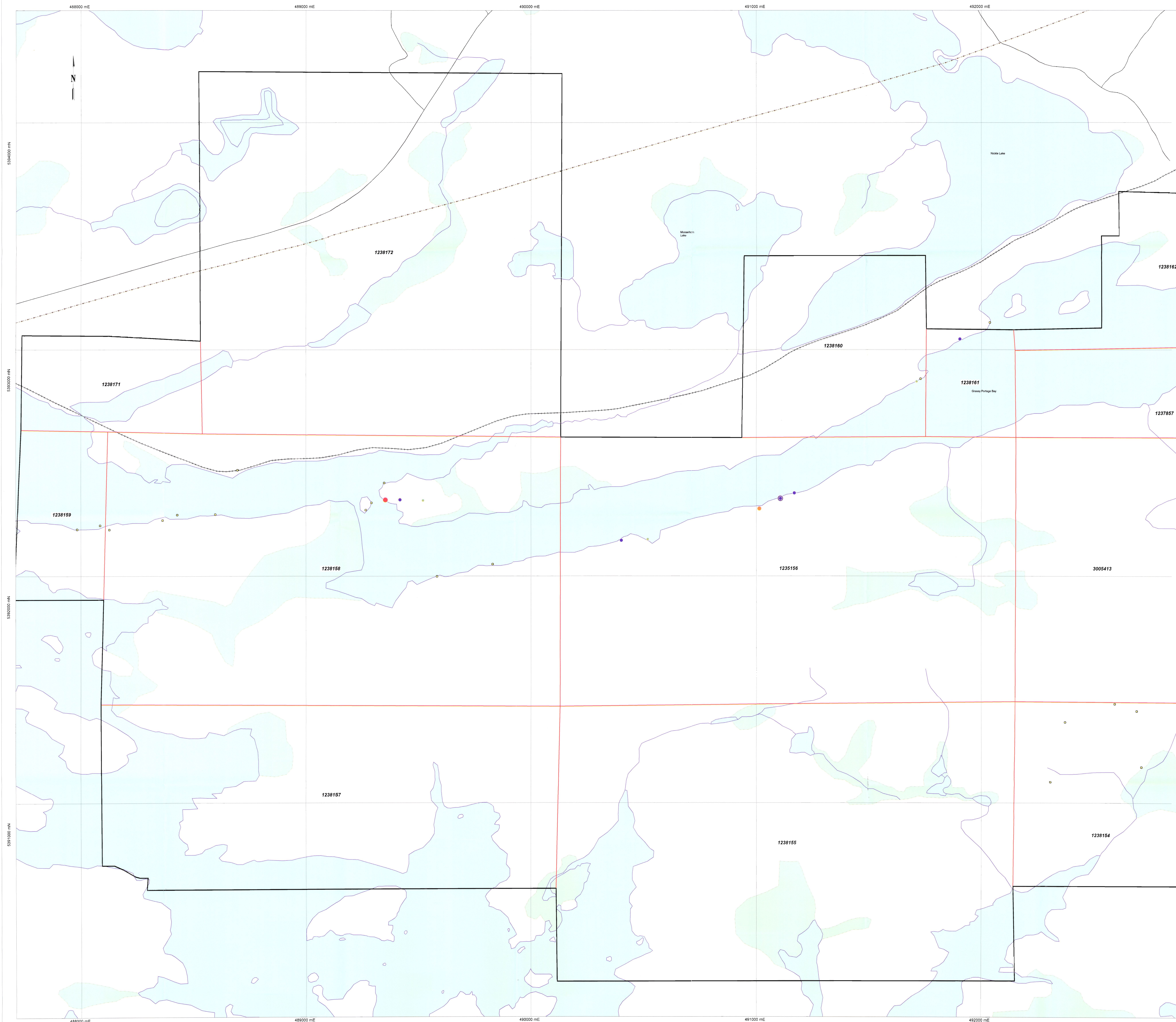
- |  |                              |
|--|------------------------------|
|  | North Rock Property Boundary |
|  | Claim Boundaries             |
|  | Roads                        |
|  | Trails                       |
|  | Railway                      |
|  | Transmission Lines           |
|  | Township Boundary            |
|  | Lakes                        |
|  | Suboutcrop or boulders       |

- |  |                   |  |                   |  |                   |
|--|-------------------|--|-------------------|--|-------------------|
|  | 2005 GRAB SAMPLES |  | GRAB SAMPLES 2004 |  | 2003 GRAB SAMPLES |
|  | Cu% >2            |  | Cu% >1 to 2       |  | Cu% >2            |
|  | 0.5 to 1          |  | 0.5 to 1          |  | 0.5 to 1          |
|  | 0.1 to 0.5        |  | 0.1 to 0.5        |  | 0.1 to 0.5        |
|  | <0.05             |  | <0.05             |  | <0.05             |
|  | others            |  | others            |  | others            |



<b>MetalCORP</b>	
<b>North Rock Dot Gradient Map 2005 Summer Program Map 4</b>	
Date: 04/25/06	Author: A. MacTavish
Office: Thunder Bay	Drawing:
Scale: 1:5,000	Projection: NAD 83, Zone 15





<b>MetalCORP</b>	
<b>North Rock Dot Gradient Map 2005 Summer Program Map 5</b>	
Date: 04/25/06	Author: Al MacTavish
Office: Thunder Bay	Drawing:
Scale: 1:5,000	Projection: Nad 83, Zone 15