

**Report of Physical Work**

**Mechanical Overburden Stripping**  
**Bedrock Trenching**  
**Sampling**

**Lightning Project**  
**Gerard Bastarache Claims**

**Burt Twp.**  
**Larder Lake Mining Division**  
**Ontario**

## **Summary**

Power stripping, washing, bedrock trenching and sampling were completed on claim 1226818 in Burt Twp. in the summer of 2006. The work was a continuation of exploration of gold, base metal and diamond occurrences that were discovered and worked by Gerard Bastarache over the past seven years.

The stripping exposed lamprophyre dikes and intermediate volcanics at the north extension area. The bedrock trenching opened up pyritic alteration zones at the previously stripped south area and north area.

Samples were collected from the south area and the north area and were assayed for gold, silver, copper, lead and zinc. Two samples assayed greater than 3,000 ppb gold.

The property is a gold, base metal and diamond prospect and remains largely unexplored. Recommendations of further exploration outlined in previous reports are still valid. Gold and base metal targets have been delineated and should be trenched or drilled. There are a number of magnetic features that could be kimberlite pipes/dikes. A high priority target is a large circular magnetic high a few hundred metres north west of the stripped diamondiferous lamprophyre intrusion.

## Table of Contents

Summary.....i  
 Introduction.....1  
 Property.....1  
 Location and Access.....1  
 Purpose of Work.....2  
 Work.....3  
     Stripping, Trenching and Bedrock Washing.....3  
     Personnel.....4  
 Conclusions and Recommendations.....4  
 Certificate of Qualifications.....6

## Illustration Index

Illustration 1: Location of Bastarache Claims.....2

## Index of Tables

Table 1: Summary of Work and Costs.....4

## Appendices

### Appendix A

#### Maps

Location Of Work; South Area, North Area and North Extension Area  
 scale: 1 : 5,000

Location Of Work; South Area scale: 1 : 500

Location Of Work; North Area and North Extension Area scale: 1 : 500

Magnetic Map; Bastarache claim block over color shaded magnetic relief  
 scale 1 : 40,000

Claim Map; Bastarache claim block scale: 1 : 40,000

#### Assay Certificates

Certificate # 6W-1852-RG1

Certificate # 6W-2891-RA1

## Introduction

A program of stripping, washing, trenching and sampling was completed on claim 1226818 in Burt Twp. The trenching was done to open up and sample gold and base metal enriched zones discovered by G. Bastarache. The stripping and washing was done to expose bedrock around a lamprophyre dike sampled by The Ministry of Northern Development and Mines.

## Property

The Property is known as the Lightning Project and is comprised of a block of 10 contiguous staked mining claims with an area of 1,408 hectares. The claim numbers are as follows:

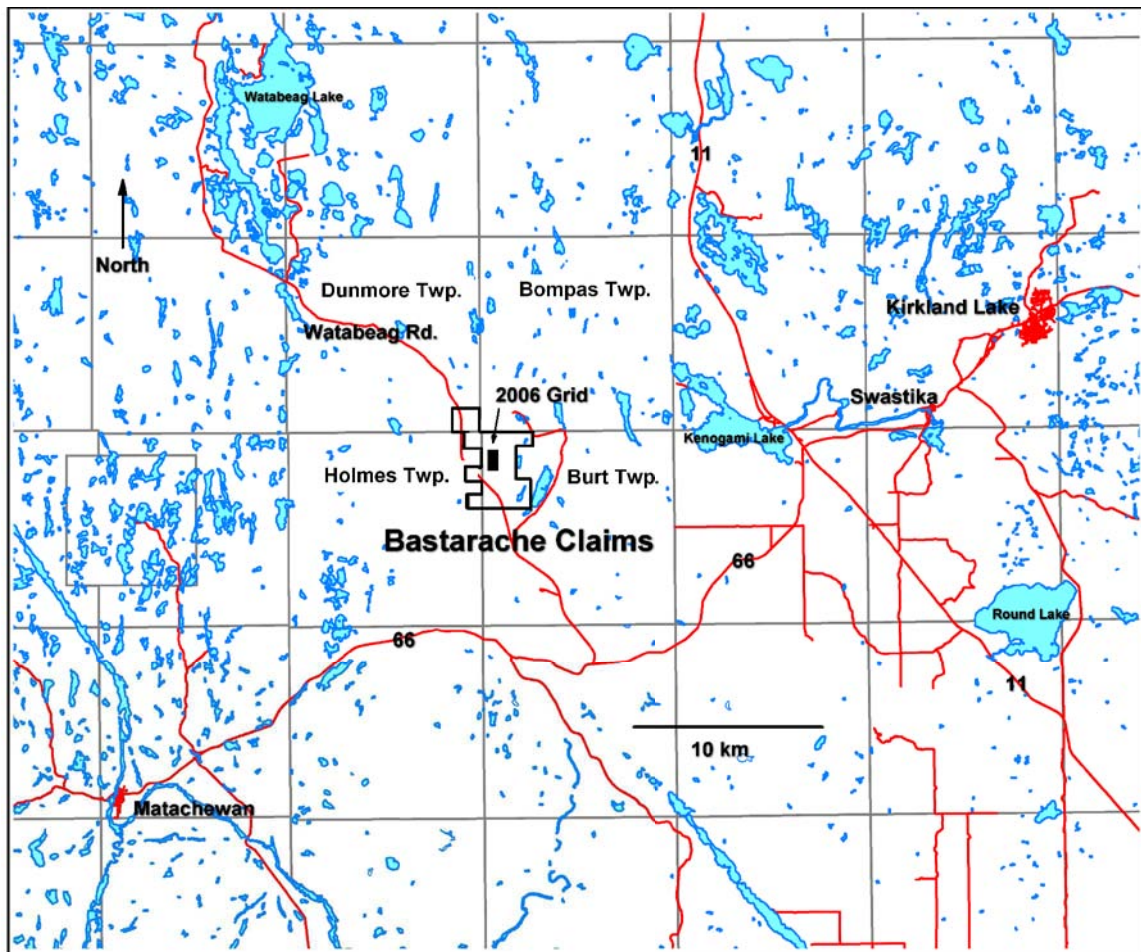
<b>Claim Number</b>	<b>Units</b>	<b>Township</b>
1226818	16	Burt
3007424	16	Burt
3013992	8	Burt
4208005	8	Burt
4208006	8	Burt
4208007	4	Burt
4208012	16	Dunmore
4207976	4	Holmes
4207977	4	Holmes
4208004	4	Holmes

The claims are held by Gerard Bastarache of Kirkland Lake, Ontario.

## Location and Access

The Property is located in the northwest corner of Burt Twp., the northeast corner of Holmes Twp., and the southeast corner of Dunmore Twp. within the Larder Lake Mining Division of Ontario. The nearest towns are Swastika and Matachewan—20 km to the east and 25 km to the southwest.

The property is accessed by travelling along Hwy 66 to a point 20 km west of Swastika, then 12 km north along the Watabeag access road and then north east by bush road to the work area.

*Illustration 1: Location of Bastarache Claims*

## Purpose of Work

The work at the south area was done to evaluate the gold and base metal potential of an area that was previously stripped. The bedrock was drilled and blasted to open up a pyritic alteration zone for recovery of fresh samples below the weathered surface. Drilling and blasting was also completed at the north area to get fresh samples from a silicified pyritic zone that has assayed over 9 grams per tonne gold.

The overburden stripping work at the north area extension was done to expose bedrock around a small outcrop of lamprophyre that was sampled—and found to be diamondiferous—by The Ministry of Northern Development and Mines (Gary Grabowski; 2004).

## Work

Work on the property was completed between June 7/06 and October 5/06 and is described below. The location and extent of the work and assays are shown on the Location of Work plan maps in Appendix A.

### Stripping, Trenching and Bedrock Washing

**June 7, 2006:** Alex MacIntyre and Associates Ltd.(MacIntyre) carried out stripping of overburden using an excavator at the north extension area under the supervision of G. Bastarache. The overburden—maximum depth of 1.5 metres—was stripped off to bedrock over an area measuring 15 metres N-S by 18 metres E-W. Intermediate pillowed porphyritic volcanics and lamprophyre dikes were exposed.

**June 8, 2006:** Alex MacIntyre and Associates Ltd. completed drilling and blasting at the south area and the north area under the supervision of G. Bastarache. At the south area trenches were blasted to a depth of 0.7 metres into silicified and pyritic intermediate volcanics striking N100°E and containing from 5 to 15% fine grained disseminated and stringer pyrite. Five samples were taken numbered L6, L7, L8, L9 and L10. The best assay was 195 ppb Au from sample L10. At the north area a trench was deepened 0.8 metres by drilling and blasting silicified pyritic syenite altered intermediate volcanic rock mineralized with 2 to 10% fine grained disseminated pyrite. Five samples were taken numbered L1, L2, L3, L4 and L5. The best assay was 3,429 ppb Au from sample L2. The 10 samples were analyzed for Au, Ag, Cu, Pb and Zn by Swastika Laboratories of Swastika, Ontario. The assay results are shown on assay certificate 6W-1852-RG1.

**June 17, 2006:** Patrick Culhane and assistant Rejean Gagnon completed power washing of the stripped bedrock at the north extension area under the supervision of G. Bastarache. Three samples of bedrock were taken at the north extension area. Two samples were analyzed for Au and Ag, and one for Cu by Swastika Laboratories. The assay results are shown on assay certificate 6W-2891-RA1.

**October 5, 2006:** G. Bastarache and T. Link measured and mapped the stripped bedrock at the north extension area. Lamprophyre dikes cut through porphyritic pillowed andesite with irregular masses of lamprophyre extending into the volcanics for up to several metres. The andesite is medium green with white feldspar phenocrysts to 1 cm diameter. The lamprophyre is dark green-black, fine grained and contains variable amounts of biotite and mica.

A summary of the dates and work completed is presented in the following table.

*Table 1: Summary of Work and Costs*

<b>Date</b>	<b>Personnel</b>	<b>Work</b>	<b>Units</b>	<b>Rate</b>	<b>Amount</b>
June 7	MacIntyre	Mobilization with truck and float	1.5 hr	\$107	\$161
	MacIntyre	Power stripping with excavator	8 hr	\$102	\$813
	G. Bastarache	Supervision	1 day	\$150	\$150
June 8	MacIntyre	Bedrock trenching with drill and air compressor, explosives	1 day	\$803	\$803
	MacIntyre	Demobilization with truck and float	1.5 hr	\$107	\$161
	G. Bastarache	Supervision	1 day	\$150	\$150
June 17	P. Culhane	Power washing bedrock	1 day	\$225	\$225
	R. Gagnon	Power washing bedrock	1 day	\$225	\$225
	P. Culhane	Pump and hose rental, gas	1 day	\$125	\$125
	G. Bastarache	Supervision	1 day	\$150	\$150
Oct. 5	G. Bastarache	Supervision and mapping	1 day	\$150	\$150
	T. Link	Mapping	1 day	\$350	\$350
<b>Total</b>					<b>\$3,463</b>

## **Personnel**

The following individuals and companies performed the work.

- Gerard Bastarache, Kirkland Lake, Ontario
- Alex MacIntyre and Associates Ltd., Kirkland Lake, Ontario
- Patrick Culhane, Kenogami, Ontario
- Rejean Gagnon, Sesekinika, Ontario
- Terry Link, Kirkland Lake, Ontario

## **Conclusions and Recommendations**

The drilling, blasting and sampling work confirmed the presence of mineralization in the south area and demonstrated continuity of gold mineralization in the higher grading—above 3 g/t gold—north area. The stripping exposed lamprophyre dikes and lamprophyre altered volcanics extending across

the north extension area. The presence of diamondiferous lamprophyre and favourable structure for kimberlite emplacement make any circular magnetic features priority targets.

The mineralized zones are open in all directions and should be explored along strike by soil geochemical and IP surveys. Targets that were delineated by past geophysical surveys should be trenched or drilled. The unexplained magnetic anomalies should be tested for kimberlite with the first priority being a large circular magnetic anomaly to the northwest on claim 4207976.

---

Terry Link  
Kirkland Lake, Ontario  
October 9, 2006



## **Certificate of Qualifications**

I, Terry Arnold Link of the Town of Kirkland Lake, Province of Ontario, do hereby certify:

- 1) That I am an independent prospector and exploration contractor and reside at 13 Government Road West, Apartment # 9, P.O. Box 561, Kirkland Lake, Ontario, P2N 3J5.
- 2) That I completed—with a 4.0 GPA—the first year of the Mining Engineering Technology course at the Haileybury School of Mines, Haileybury, Ontario.(1993)
- 3) That I have worked in the field of mineral exploration as an independent prospector and exploration contractor over the past 13 years and prior to 1993 prospected part time over a period of 15 years.
- 4) That this report is based on field work by the writer, various public documents and information supplied to me by G. Bastarache.
- 5) That I do not have a financial interest in the Bastarache claims in Burt Township, Ontario.

Dated at Kirkland Lake, Ontario on October 9, 2006.

---

Terry Link

## **Appendix A**

- Maps
  - Location Of Work; South Area, North Area and North Extension Area  
scale: 1 : 5,000
  - Location Of Work; South Area scale: 1 : 500
  - Location Of Work; North Area and North Extension Area scale: 1 : 500
  - Magnetic Map; Bastarache claim block over color shaded magnetic relief  
scale 1 : 40,000
  - Claim Map; Bastarache claim block scale: 1 : 40,000
- Assay Certificates
  - Certificate # 6W-1852-RG1
  - Certificate # 6W-2891-RA1

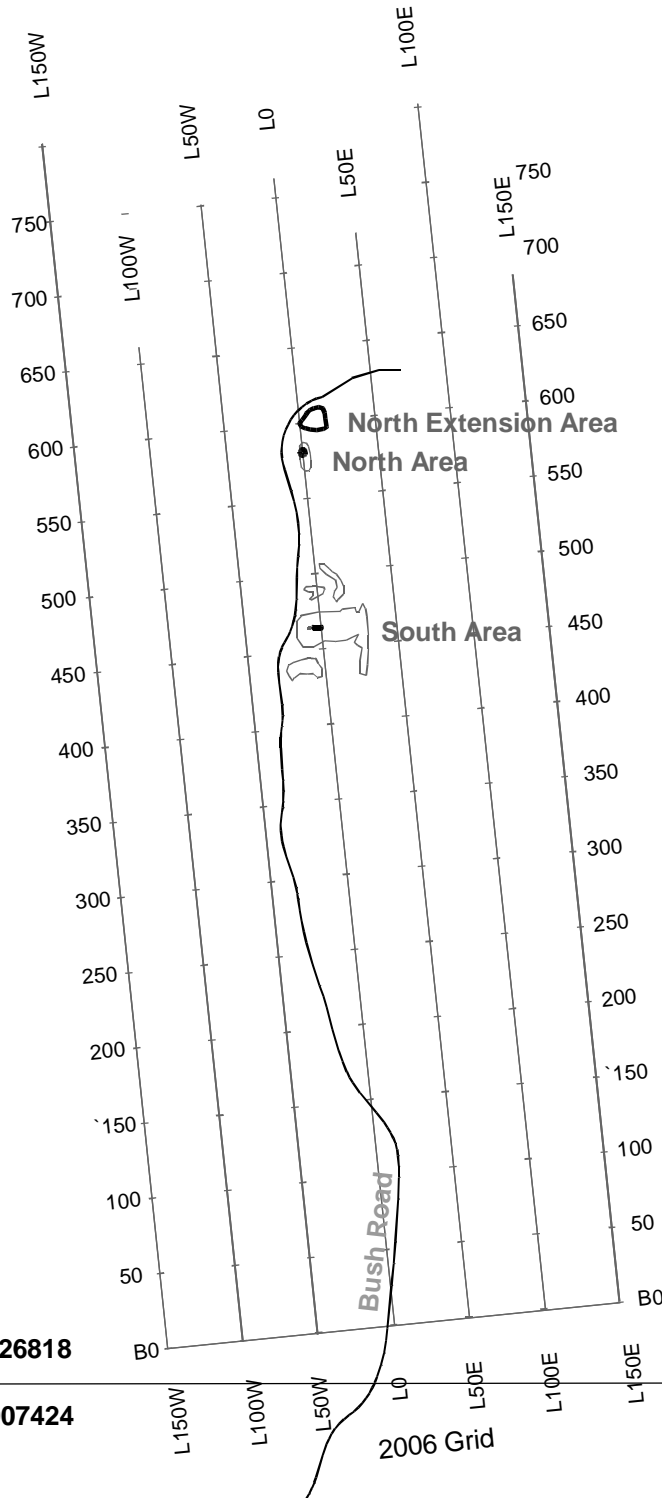
# Lot 12 Con 6



1226818

Holmes Twp.

Burt Twp.



100 metres

## Key

-  New Work (2006)
-  Previous Work

Gerard Bastarache		
Location Of Work		
South Area, North Area and North Extension Area		
Lightning Project	Burt Tw p.	Ontario
October 6, 2006	Draw n by T. Link	1:5,000



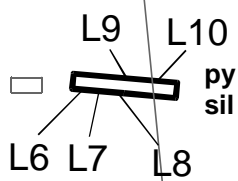
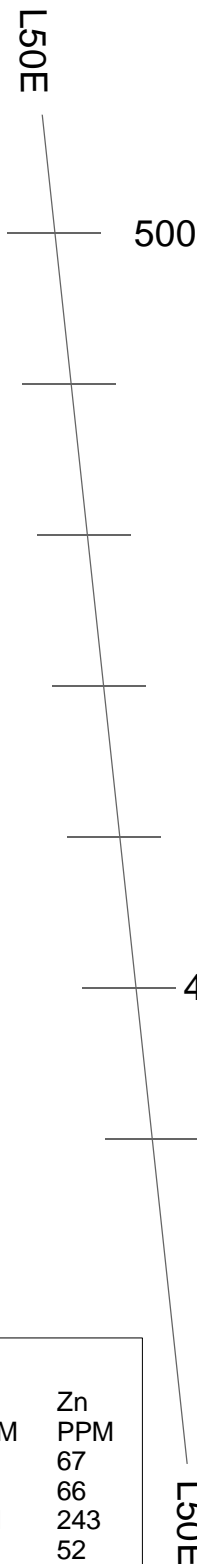
1226818

South Area

Bush Road


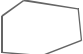

10 metres

LO



2006 Assay Results					
Sample #	Au PPB	Ag PPM	Cu PPM	Pb PPM	Zn PPM
L6	2	0.1	92	4	67
L7	nil	0.1	98	1	66
L8	2	1.2	322	101	243
L9	3	0.1	15	1	52
L10	195	0.1	15	1	52

**Key**

-  New Work—drilling and blasting (2006)
-  Previous Work—stripping
-  Previous Work—drilling and blasting
- py** pyrite
- sil** silicified

Gerard Bastarache		
Location Of Work		
South Area		
Lightning Project	Burt Tw p.	Ontario
October 6, 2006	Draw n by: T. Link	1:500



07

650

650

L50E

1226818

Samples 41962, 41963, 41964

MNDM Lamprophyre sample (2004); 3 microdiamonds

Andesite; pillowed, porphyritic

North Extension Area

600

600

Lamprophyre

2006 Assay Results

Sample #	Au PPB	Au 2 PPB	Ag PPM	Cu PPM	Pb PPM	Zn PPM
L1	2949	3154	1.6	126	1	53
L2	3429	3017	0.7	47	1	35
L3	69	-	0.1	12	1	87
L4	137	-	0.2	90	1	57
L5	10	-	0.8	73	35	131
41962	10	nil	0.1	-	-	-
41963	nil	-	0.1	-	-	-
41964	-	-	3.1	170	-	-

L5

North Area

py  
sil

L1

L2

L3

L4

07

550

L50E

**Key**



New Work—drilling and blasting (2006)

New Work—stripping (2006)

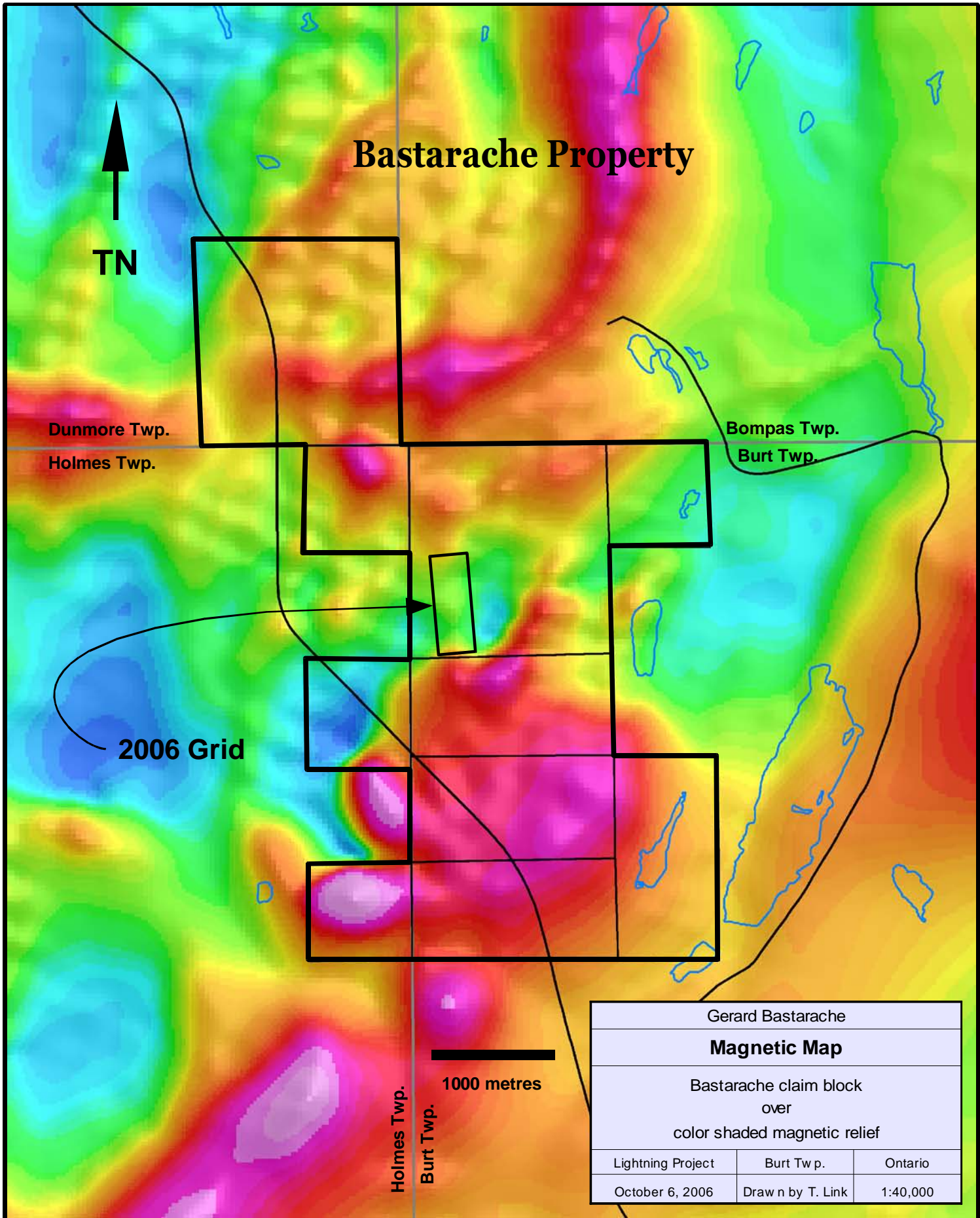
Previous Work—drilling and blasting

py  
pyrite

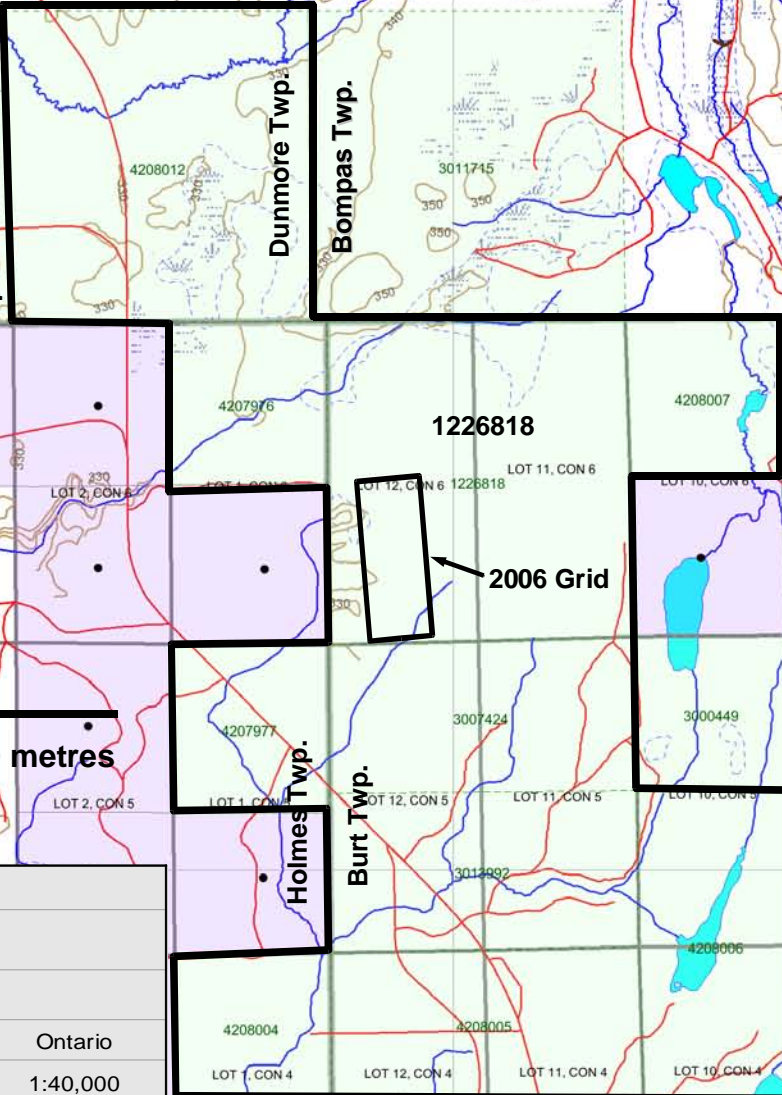
sil  
silicified

10 metres

Gerard Bastarache		
Location Of Work		
North Area and North Extension Area		
Lightning Project	Burt Tw p.	Ontario
October 6, 2006	Draw n by: T. Link	1:500



# Bastarache Property



1000 metres

Gerard Bastarache		
<b>Claim Map</b>		
Bastarache claim block		
Lightning Project	Burt Tw p.	Ontario
October 6, 2006	Draw n by T. Link	1:40,000



Established 1928

# Swastika Laboratories Ltd

Assaying - Consulting - Representation

## Geochemical Analysis Certificate

**6W-1852-RG1**

Company: **RANDBURG INTERNATIONAL GOLD**

Date: JUN-26-06

Project:

Attn: M.Oparo

We hereby certify the following Geochemical Analysis of 10 Rock samples submitted JUN-20-06 by .

Sample Number	Au PPB	Au Check PPB	Ag PPM	Cu PPM	Pb PPM	Zn PPM
L1	2949	3154	1.6	126	1	53
L2	3429	3017	0.7	47	1	35
L3	69	-	0.1	12	1	87
L4	137	-	0.2	90	1	57
L5	10	-	0.8	73	35	131
L6	2	-	0.1	92	4	67
L7	Nil	-	0.1	98	1	66
L8	2	-	1.2	322	101	245
L9	3	-	0.1	44	1	59
L10	195	-	0.1	15	1	52
Blank	2	-	-	-	-	-
STD OxJ47	2386	-	-	-	-	-

Certified by \_\_\_\_\_





Established 1928

# Swastika Laboratories Ltd

Assaying - Consulting - Representation

## Assay Certificate

**6W-2891-RA1**

Company: **G.BASTARACHE**

Date: SEP-27-06

Project:

Attn: G.Bastarache

We hereby certify the following Assay of 3 Rock samples submitted SEP-22-06 by .

Sample Number	Au g/tonne	Au Check g/tonne	Ag PPM	Cu %
41962	0.01	Nil	0.1	-
41963	Nil	-	0.1	-
41964	-	-	3.1	0.017

Certified by