



**Drill Hole T-1-b
Summary Report for Assessment**

**Metalex Ventures Ltd.
South of Missisa River Area
Porcupine Mining Division**

2.34473

**Brian K. Polk
Polk Geological Services
Mar. 18, 2007**

Metalex Ventures Ltd. – Drill Hole T-1-b Summary Report for Assessment

In the spring of 2005, Metalex Ventures Ltd. of Kelowna, B.C. endeavored to drill several regional targets defined by a previous airborne geophysical survey. Target T-1, on mineral claim 3015701, Porcupine Mining Division, was proven to be a kimberlite by initial drill hole T-1-a. A second hole was drilled to confirm the hit, further explore the body and to acquire more kimberlite material for analysis. Hole T-1-b was drilled between May 2 and May 22, 2005 to a depth of 605 feet, ending in kimberlite. The work was performed by Metalex employees: driller- Walter Bodnar, and helper- Richard Gaida, both of near Winnipeg, Manitoba. The Project was supervised by Arnold Bauslaugh of Kelowna, B.C., also a Metalex employee. Analytical work was carried out at C.F. Mineral Research in Kelowna, B.C.

Drill hole T-1-b was collared at UTM (Nad83, Zone 16U) coordinate 632735E and 5844980N in the South of Missisa River BMA (G-3853) on claim 3015701. The area is extremely remote. The drilling equipment was brought in across land using a pair of Lamtrack tractors and day to day service of the drill was accomplished using helicopters. A regional exploration camp set up by Metalex was used during the program. The camp was 10 kilometers away from the T-1 site. Initial access was overland using Lamtrack tracked vehicles and snowmobiles. Upon break-up, a helicopter was used to complete the work.

This report was penned by Brian K. Polk of Polk Geological Services in Timmins, Ontario between Mar 10 and Mar 18th, 2007, the date of report completion.

No ground work was done in this vicinity prior to this drilling and no references for this area were found.

The Limestone portion of the drill hole are stored at the site of the drill hole while the kimberlitic portion of the hole were all shipped to C.F. Mineral Research in Kelowna, B.C. for crushing and indicator mineral analysis. The whole of the kimberlite drill hole core was used in this process and no core now exists. Fractions, separates and grains are all housed at C.F. Mineral Research.

The process for grain extraction is included in the report. Results are used to characterize the body statistically in regards to other kimberlites in the region and globally. Ultimately, the outcome of this work is proprietary. The data provided can be used to typify relative grain counts for the body.

2 plans are provided for this report 1) a digital plan (Metalex drawn) showing the relationship of the drill hole to the geophysically defined extents of the kimberlite, and 2) a scaled, MNDM claim map derived plan (Polk Geological Services) for assessment purposes.

The total cost for the drilling and support is \$88,667 or \$146.56/foot drilled

630000 E

635000 E

4200698



4200684

3015856
3015857 3015858 3015859
3015854

3016958

5845000 N

METALEX VENTURES LTD.
KYLE PROJECT, T-1 KIMBERLITE
BMA - S OF MISSISSA RIVER
1:40,000

SAMPLE PREPARATION, ANALYSES AND SECURITY

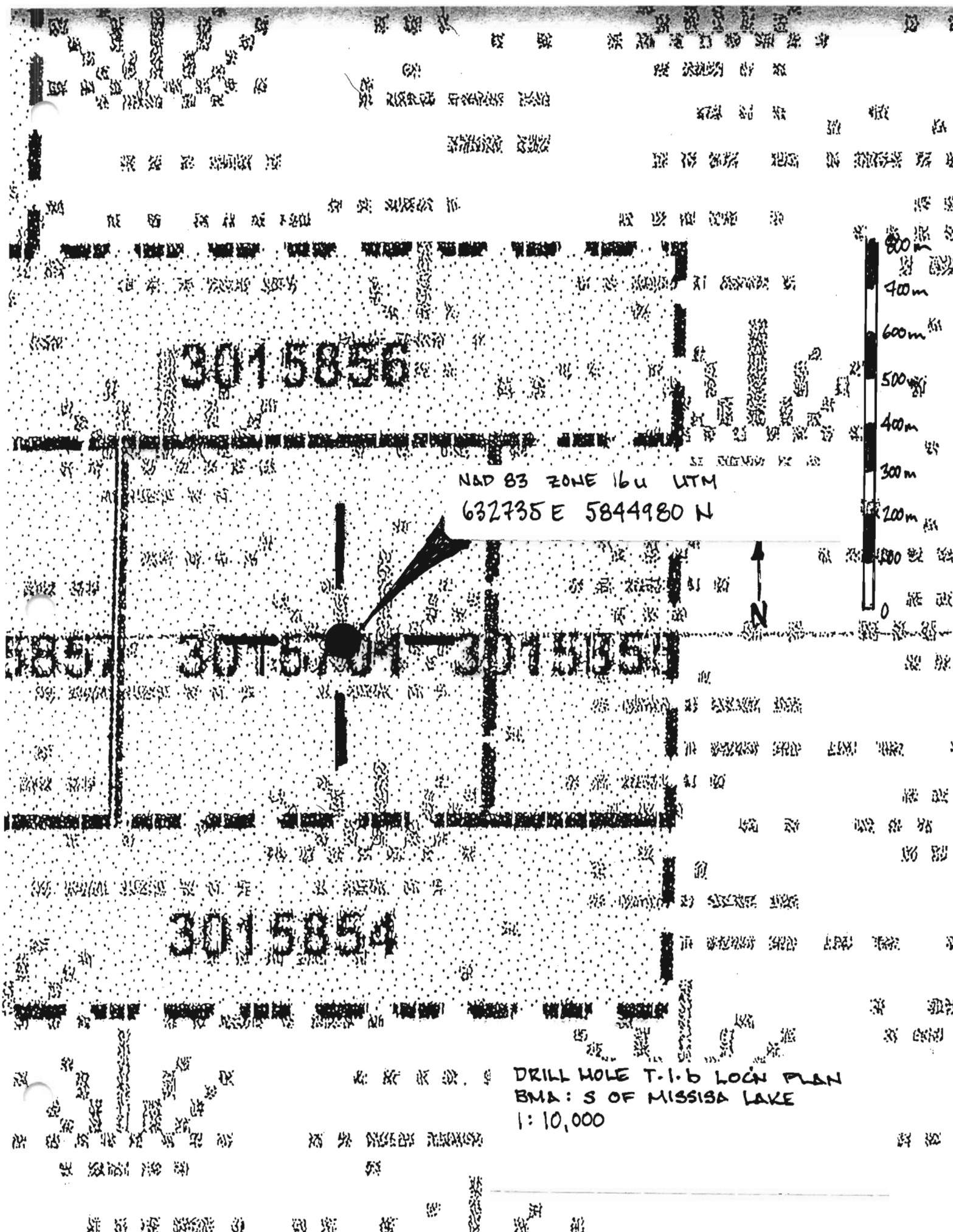
At the C.F. Mineral Research laboratory, the samples underwent wet sieving, dry sieving, heavy liquids separation and electromagnetic separation to concentrate heavy minerals. Heavy mineral fractions of -20+80HIL and -20+80HPYCRD were examined under binocular microscopes and any potential diamond indicators were carefully extracted.

To maintain quality control, each heavy mineral sample was examined by at least two laboratory personnel: a first-pass picking by a laboratory technician and a second-pass picking/checking by a senior laboratory technician. Work by the senior technicians were also checked routinely. Any missed indicator grains were recorded, added to the picking results and included for subsequent analyses.

The picked grains were encapsulated in epoxy mounts and scanned qualitatively using a Scanning Electron Microscope (SEM). Based on the scans, potential diamond indicators were selected for quantitative analyses utilising a CAMECA SX-50 electron microprobe.

Before starting a microprobe run, a number of mineral standards were analysed to verify the consistency and reliability of the instrument. Results of the standards were compared to known values obtained previously at C.F. Mineral Research and at various laboratories world-wide. Any unsatisfactory results in the standards were corrected immediately by calibration or verification of spectrometer positions, and the standards were rerun.

Once the standard results were satisfactory, an analytical run would be set up consisting of standards and the relevant samples. Standards were analysed at the beginning and the end of each run, and at intervals of every 100 to 120 analyses. When an analysis run was completed, the results were classified by a proprietary computer program to identify and rank diamond indicators.



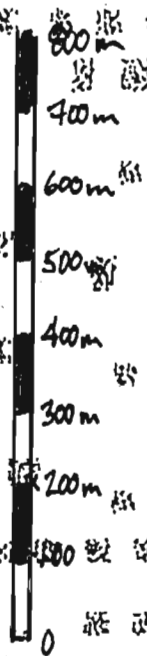
3015856

NAD 83 ZONE 16u UTM
632735 E 5844980 N

3015851

3015854

DRILL HOLE T-1-b LOGN PLAN
BMA: S OF MISSISSA LAKE
1:10,000



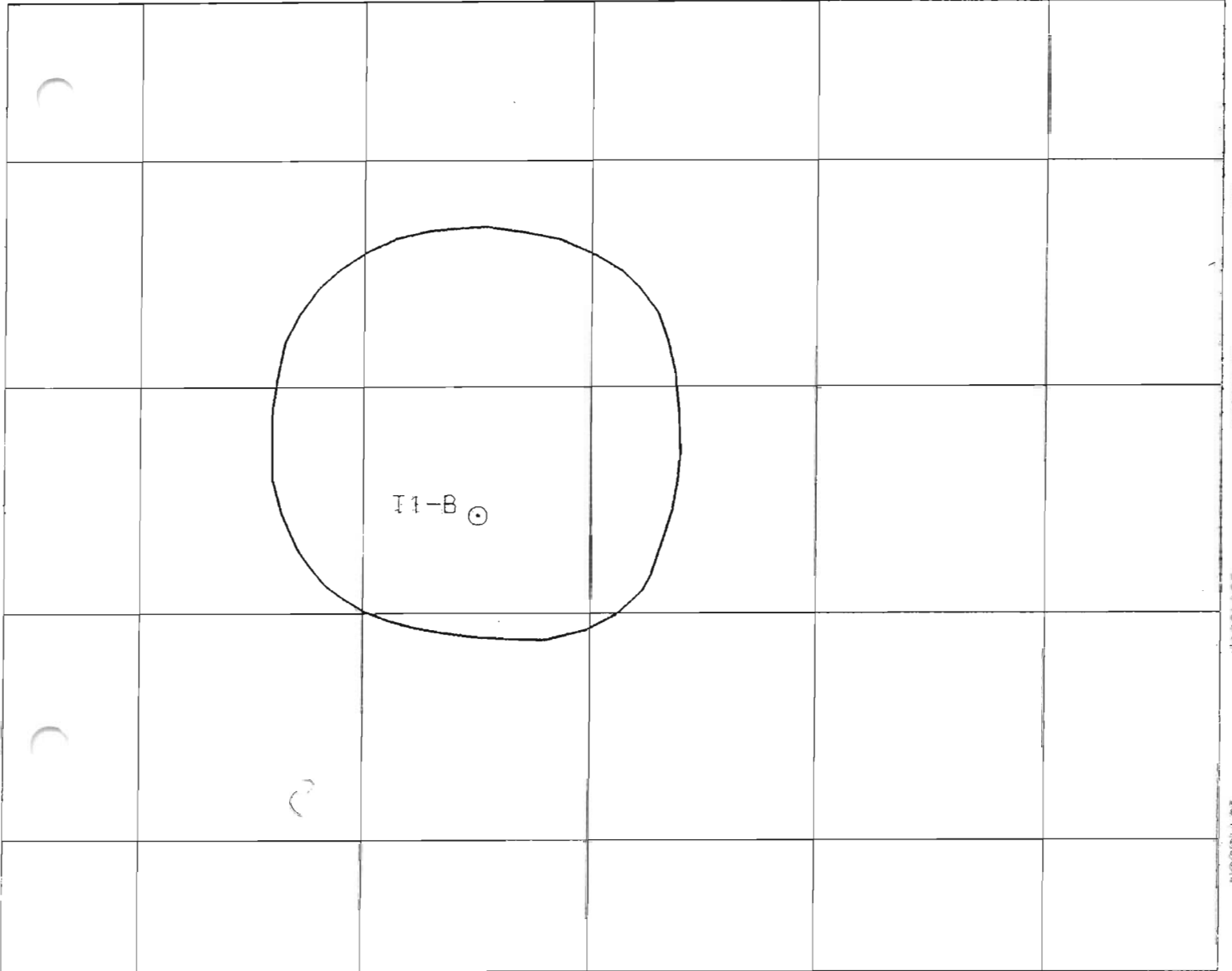
632600E

632700E

632800E

632900E

633000E



5845100N

5845000N

5844900N

5844800N

632600E

632700E

632800E

632900E

633000E

Map Scale: Arbitrary

25 0 25 50 75

metres

NAD83 / UTM Zone 16N

T1 Kimberlite Drill Hole

Metalex Ventures Ltd.

Drill Hole Collar



Extent of Scott Hogg Theoretical Model



Drafting By: Norton Redlich

Modification Date: 03/13/2007

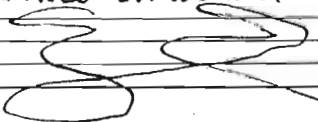
Plotting Date: 13/03/2007

DIAMOND DRILL LOG

DRILLING COMPANY		COLLAR ELEVATION		DIP	BEARING	DIP	BEARING	CLAIM NO.	LOCATION	MAP	HOLE NO.	PAGE NO.	
METALEX, WALTER BODNAR				90	0			3015701	NAD 83 164		T-1-b-	01	
START DATE	COMPLETION DATE	DATE LOGGED						MAP NO.	632735 E		COMMENTS delineation of T-1 Kimberlite AQTK DIAM. CORE		
MAY 02, 2005	MAY 22, 2005	MAY 25, 05						5844980 N					
EXPLORATION CO. OWNER/OPTIONEES		LOGGED BY						PROPERTY NAME	T-1				
METALEX VENTURES LTD.		A. BAUSLAUGH						TOTAL FOOTAGE					
								605 FEET					
FOOTAGE		ROCK TYPE	DESCRIPTION					PY %	SAMPLE FOOTAGE		SAMPLE LENGTH	ASSAYS	
FROM	TO		COLOUR, GRAIN SIZE, TEXTURE, MINERALS, ALTERATION, ETC.						FROM	TO			
0	125'	QVB	SOFT MARINE CLAY, A FEW BOULDERS, LARGE/LIMESTONE DOM.										
125	320'	LIMESTONE											
320	325	GREEN LIMESTONE	DARK GREEN TO LIGHT GREEN LIMESTONE										
325	327	BX	GREEN LIMESTONE BRECCIA										
327	334	LIMESTONE	PALE GREEN LIMESTONE										
334	335	LIMESTONE	PALE GREY, BROKEN, WEATHERED (?)										
335	340	BX	LIMESTONE BRECCIA										
340	341	LIMESTONE	BROWN LIMESTONE										
341	346	KIMB. TUFF?	POSSIBLE GREEN TUFF										
346	355	BX	LIMESTONE BRECCIA										
355	365	LIMESTONE	DARK GREEN, LAYERED LIMY MUDSTONE										
365	370	LIMESTONE	DARK GREEN TO LIGHT GREEN LIMESTONE										
370	441.5	LIMESTONE	DARK GREEN TO LIGHT GREY LIMESTONE, SOME BRECCIAS										
441.5	443	LIMESTONE	LIGHT GREY, MEDIUM GRAINED, MODERATELY HARD LIMESTONE CONSISTS MAINLY OF ROUND, CLEAR TO LIGHT GREY CALCITE, CORE IS SOFT & GRUMBLY @ LOWER CONTACT										
443	458	KIMBERLITE	BROWN TO DARK GREY MEDIUM GRAINED HIGHLY ALTERED KIMBERLITE, 40-60% FINE TO MEDIUM GRAINED (UP TO 15mm), WHITISH GREEN, ROUNDED & SUBHEDRAL OLIVINES AND ORTHOPYROXENES. THE MACROCRYSTS ARE SET IN AN APHANITIC TO FINE GRAINED GROUNDMASS OF MCAS (PHLOGOPITES & POSSIBLY TRACE BOTTITES), SERICITES OXIDES, CARBOXYATES & LIGHT GREEN TO GREY UNKNOWN MATERIALS; PRISTINE OLIVINES OR ORTHOPYROXENES ARE RARE WITH MOST OF THE GRAINS ALTERED TO SOFT WHITISH										

FOOTAGE		ROCK TYPE	DESCRIPTION <small>COLOUR, GRAIN SIZE, TEXTURE, MINERALS, ALTERATION, ETC.</small>	PY %	SAMPLE FOOTAGE		SAMPLE LENGTH	ASSAYS	
FROM	TO				FROM	TO			
			SERPENTINE; TRACE CLINOPYROXENES & OXIDES (PROBABLY CHROMITES) ARE PRESENT; AS A WHOLE, THE DRILL CORE IS FAIRLY COMPETENT & ARE SOFT & VUGGY IN ONLY A FEW INTERVALS; FRACTURES RANGE FROM WAVY TO IRREGULAR & ARE ORIENTED @ 20-55 DPCA; FRACTURE SURFACES ARE VERY ROUGH & COMMONLY FILLED WITH CHALKY, LIGHT GREEN TALC & GREEN CHLORITE.						
450	507	KIMBERLITE	SIMILAR TO ABOVE KIMBERLITE BUT, IS INCREASINGLY ALTERED & OXIDIZED WITH AN OVERALL RUSTY REDDISH BROWN APPEARANCE; ROUNDED SUB-HEXAG. REDDISH BROWN MACROCRYSTS DOMINATE THE CORE & ARE POSSIBLY HIGHLY ALTERED OLIVINES OR OXYPHYROXENES; THE CORE IS CRUMBLY AND BADLY BROKEN TO PEBBLE SIZED PIECES @ 503'						
507	548	KIMBERLITE	DARK GREEN, MEDIUM GRAINED KIMBERLITE, SIMILAR TO ABOVE INTERVAL EXCEPT FOR A GRADATIONAL DECREASE IN ALTERATION AND A SLIGHT INCREASE IN THIN (<1.5mm) AND IRREGULAR CALCITE AND SULFIDE VENILETS; THE CORES ARE ALSO CROSSCUT BY WAVY BANDS (UP TO 1-2cm WIDE) OF SOFT, WHITISH GREEN TALC IN SOME INTERVALS; FLUORAL, CLEAR TO DARK PURPLE FLUORITE CRYSTALS (<8mm) ARE PRESENT IN FRACTURES @ 547'						
548	575	KIMBERLITE	GREEN KIMBERLITE						
575	605	KIMBERLITE	DARK GREEN SERPENTINIZED KIMBERLITE						
605'		EO4							
			DRILL CORE: LIMESTONE PORTION; REMAINS AT DRILL SITE						
			: KIMBERLITE PORTION: ALL USED FOR ANALYSIS, ALL REMAINS @ C.F. MINERAL RESEARCH KELOWNA, B.C.						

ARNOLD BAUSLAUGH



OVB, BOULDERY CLAY

LIMESTONE

POSSIBLE KIMBERLITIC
TUFE

BX
BX
BX

DK GREEN

BROWN TO DK GREEN
443
458

REDDISH, OX'D

DK GREEN
309

GREEN

DARK GREEN/SERPENT

605' EOH

DIP: 90

AZI: 0

EOH: 605'

IMPERIAL



Scale: 1:

1200

METALEX VENTURES LTD.

SECTION

DRILL HOLE T-1-b

PROPERTY: T-1 KIMB.

DATE: MAR 17/2009

CLAIM: 3015701

SCALE: 1:1200

POLK GEOLOGICAL SERVICES

SUPERIOR DRAFTING & GRAPHICS



C.F. MINERAL RESEARCH LIMITED

1677 POWICK ROAD
KELOWNA, BRITISH COLUMBIA
CANADA V1X 4L1

TEL (250) 860-8525
FAX (250) 862-8435

Client: Metalex Ventures Ltd.
2600B Enterprise Way
Kelowna, B.C. V1X 7Y5

CERTIFICATE PW05FA34000283

This certificate refers to a report of **787 full electron microprobe analyses** (and associated work) carried out within C.F. Mineral Research batches **05-2853(1)**. The report was completed on the **31 January 2006**.

All results apply to samples/fractions/grains as submitted and are considered to be the confidential property of the Client and supersede any preliminary report with this certificate number.

The certificate gives **Peter Gregory** full access to all cited results.

Signed by:

Dr. M.E. Whitehead

Date: 1 February 2006

Picking Results

WO	Batch	Sample Name	Sample Weight	Fraction	Weight	Unit	Pck wt	PP	OR	CD	Olv/Opx	Blks
FA34	May-53	T1-B	48.26	-16+32HIL	52.18	g	52.18	0	0	0	0	74
FA34	May-53	T1-B	48.26	-16+32HPY	3.49	g	3.49	2	0	0	0	60
FA34	May-53	T1-B	48.26	-32+60HIL	32.84	g	2.16	0	0	0	1	369
FA34	May-53	T1-B	48.26	-32+60HPY	3.17	g	3.17	22	0	0	15	471

Title	Description
WO	Work Order
Batch	Batch number of sample
Sample Name	Name of sample
Sample Weight	Weight of sample as received at laboratory
Fraction	Refers to the size (ie -16 +32 mesh), density (H = heavy) and magnetic fraction (IL = ilmenite, PY = pyrope)
Weight	Total weight of the fraction
Unit	Units of measure for Weight
Pck wt	Picked weight in grams
PP	Purple pyropes
OR	Orange garnets
CD	Chrome diopsides
Olv/Opx	Olivines and orthopyroxenes
Blks	Blacks including ilmenites and chromites

Legend for Electron Microprobe Results

Column	Description
Name	Sample name
Fraction	The size (ie -32 +60 mesh, density (H is heavy) and magnetic properties (PY is pyrope, IL is ilmenite) of the fraction in which the indicator was picked
Mount	The number of the mount in which the grain is contained
Cell	The cell on the mount in which the grain is contained
Grain	The location within the cell in which the grain is contained
CFM	Mineral species (CR = chromite, IL = ilmenite, PP = pyrope garnet, OLV = olivine
SiO2 to K2O	Weight % of the respective oxides
Total	Total weight % of all of the analyzed oxides for the given grain
Flag	The "#" symbol indicates that the analysis falls beyond the acceptable range of 98.5 to 101.0%. Indicates a suspect analysis.

Name	Fraction	Mount	Cell	Grain	CFM	SiO2	TiO2	Al2O3	V2O3	Cr2O3	Fe2O3	FeO	MgO	CaO	MnO	NiO	ZnO	Nb2O5	Na2O	K2O	Total	Flag
T1-B	-32+60HPY	4740	1	401	CR	0.02	0.71	20.06	0.27	46.5	3.11	15.1	13.08	0	0.36	0.07	0.11				99.4	
T1-B	-32+60HPY	4740	1	402	CR	0.07	0.13	8.63	0.27	61.03	3.28	12.86	13.17	0.02	0.29	0.1	0.06				99.9	
T1-B	-32+60HPY	4740	1	404	CR	0.13	0.17	7.93	0.24	62.17	3.18	12.5	13.43	0	0.28	0.13	0.08				100.24	
T1-B	-32+60HPY	4740	1	408	CR	0	0.03	20.93	0.2	47.75	3.42	12.57	14.61	0.01	0.3	0.11	0.09				100.03	
T1-B	-32+60HPY	4740	1	413	CR	0.12	0.05	7.91	0.25	62.28	3.56	12.34	13.51	0	0.28	0.07	0.1				100.46	
T1-B	-32+60HPY	4740	1	501	CR	0.05	0.35	8.82	0.3	59.45	4.3	13.34	13.07	0	0.24	0.09	0.08				100.08	
T1-B	-32+60HPY	4740	1	506	CR	0.07	0.08	8.41	0.26	62.05	3.25	12.36	13.63	0.01	0.21	0.1	0.06				100.48	
T1-B	-32+60HPY	4740	1	507	CR	0.03	0	18.87	0.13	50.83	2.2	13.69	13.64	0	0.32	0.02	0.16				99.87	
T1-B	-32+60HPY	4740	1	509	CR	0	0.57	20.85	0.35	46.24	3.69	14.26	13.84	0	0.3	0.08	0.18				100.35	
T1-B	-32+60HPY	4740	1	511	CR	0	0.01	17.42	0.21	52.33	1.61	15.44	12.28	0.01	0.41	0.09	0.15				99.96	
T1-B	-32+60HPY	4740	1	603	CR	0.15	0.08	8.01	0.25	62.16	3.57	12.08	13.69	0.01	0.28	0.05	0.08				100.4	
T1-B	-32+60HPY	4740	1	604	CR	0	0.2	22.76	0.28	46.34	2.87	13.17	14.65	0.01	0.32	0.08	0.2				100.88	
T1-B	-32+60HPY	4740	1	607	CR	0.02	0.2	10.66	0.2	58.61	2.8	13.72	12.81	0	0.28	0.05	0.08				99.43	
T1-B	-32+60HPY	4740	1	608	CR	0.04	0.03	14.19	0.19	57.09	1.46	12.73	13.86	0.01	0.25	0.07	0.11				100.03	
T1-B	-32+60HPY	4740	1	609	CR	0.14	0.14	22.51	0.24	45.99	4.53	9.15	17.16	0.01	0.16	0.17	0.07				100.26	
T1-B	-32+60HPY	4740	1	702	CR	0	0.07	25.42	0.24	43.18	3.19	11.73	15.67	0	0.23	0.08	0.09				99.9	
T1-B	-32+60HPY	4740	1	703	CR	0	0.26	18.49	0.19	50.63	2.61	14.51	13.35	0	0.3	0.1	0.07				100.51	
T1-B	-32+60HPY	4740	1	704	CR	0.09	0.48	7.83	0.18	62.01	3.13	12.62	13.56	0.01	0.31	0.11	0.09				100.42	
T1-B	-32+60HPY	4740	1	706	CR	0.17	0.08	7.61	0.18	61.37	4.34	12.21	13.47	0.01	0.25	0.09	0				99.78	
T1-B	-32+60HPY	4740	1	709	CR	0	0.29	19.6	0.2	50.2	1.25	14.57	13.33	0	0.28	0.06	0.24				100.02	
T1-B	-32+60HPY	4740	1	710	CR	0.14	0.17	7.28	0.28	62.2	3.64	12.5	13.3	0.02	0.26	0.1	0.06				99.93	
T1-B	-32+60HPY	4740	2	104	CR	0	0.22	10.23	0.23	59.7	2.99	12.77	13.54	0	0.28	0.1	0.05				100.12	
T1-B	-32+60HPY	4740	2	111	CR	0	0.03	25.09	0.23	44.71	2.66	11.44	15.92	0	0.26	0.1	0.17				100.6	
T1-B	-32+60HPY	4740	2	112	CR	0	0.05	25.46	0.17	44.6	2.45	11.23	16.1	0	0.28	0.06	0.18				100.58	
T1-B	-32+60HPY	4740	2	201	CR	0.01	0.33	21.65	0.25	46.22	3.08	14	13.92	0	0.29	0.09	0.09				99.92	
T1-B	-32+60HPY	4740	2	203	CR	0.15	1.31	26.46	0.29	38.87	4.91	11.48	16.75	0.01	0.25	0.17	0				100.66	
T1-B	-32+60HPY	4740	2	206	CR	0.05	0.11	9.72	0.31	60.22	3.34	12.44	13.63	0	0.27	0.09	0.12				100.28	
T1-B	-32+60HPY	4740	2	207	CR	0.02	0.04	24	0.23	44.81	3.09	12.21	15.16	0	0.32	0.08	0.13				100.09	
T1-B	-32+60HPY	4740	2	212	CR	0.02	0.76	23.89	0.18	42.02	5.05	13.57	14.83	0.03	0.34	0.04	0.05				100.78	
T1-B	-32+60HPY	4740	2	215	CR	0	0.04	24.83	0.19	43.58	3.06	13.89	14.25	0.01	0.25	0.08	0.15				100.31	
T1-B	-32+60HPY	4740	2	301	CR	0.11	0.44	7.87	0.2	62.2	3.03	12.8	13.44	0	0.35	0.08	0.05				100.58	
T1-B	-32+60HPY	4740	2	302	CR	0	0.18	26.42	0.18	39.99	4.12	14.38	14.04	0.01	0.28	0.1	0.18				99.87	
T1-B	-32+60HPY	4740	2	305	CR	0.04	0.18	9.39	0.28	59.66	3.94	12.46	13.6	0	0.22	0.08	0.1				99.96	
T1-B	-32+60HPY	4740	2	308	CR	0.14	0.06	8.01	0.23	61.86	3.63	12.46	13.39	0	0.29	0.07	0.06				100.21	
T1-B	-32+60HPY	4740	2	311	CR	0	0.12	17.81	0.22	52.05	1.13	15.97	12.04	0	0.46	0.01	0.21				100.02	
T1-B	-32+60HPY	4740	2	312	CR	0.06	0.06	10.27	0.28	59.22	3.5	13.82	12.82	0.03	0.25	0.04	0.1				100.43	
T1-B	-32+60HPY	4740	2	402	CR	0.01	0.79	21.16	0.32	45.82	3.66	13.97	14.26	0.06	0.25	0.12	0.12				100.54	
T1-B	-32+60HPY	4740	2	405	CR	0.14	1.84	16.11	0.42	49.17	4.93	11.07	16.18	0	0.21	0.17	0				100.24	
T1-B	-32+60HPY	4740	2	406	CR	0	0.09	24.2	0.2	46.19	1.4	12.86	14.91	0	0.25	0.1	0.24				100.43	
T1-B	-32+60HPY	4740	2	408	CR	0.05	0.53	9.98	0.27	57.93	3.84	14.62	12.44	0.01	0.29	0.08	0.08				100.11	
T1-B	-32+60HPY	4740	2	410	CR	0	0.25	15.75	0.19	54.87	0.7	13.69	13.4	0.04	0.23	0.07	0.14				99.33	
T1-B	-32+60HPY	4740	2	411	CR	0.15	0.52	12.96	0.21	55.57	4.07	10.72	15.27	0	0.22	0.18	0.05				99.93	

Name	Fraction	Mount	Cell	Grain	CFM	SiO2	TiO2	Al2O3	V2O3	Cr2O3	Fe2O3	FeO	MgO	CaO	MnO	NiO	ZnO	Nb2O5	Na2O	K2O	Total	Flag
T1-B	-32+60HPY	4740	2	413	CR	0	0.07	17.79	0.16	52.52	1.62	13.47	13.7	0.01	0.31	0.07	0.15				99.88	
T1-B	-32+60HPY	4740	2	502	CR	0.01	0.13	22.87	0.26	45.21	3.5	12.35	14.99	0	0.22	0.07	0.1				99.71	
T1-B	-32+60HPY	4740	2	503	CR	0.15	0.07	7.98	0.26	62.14	3.56	11.54	14	0	0.23	0.1	0.01				100.03	
T1-B	-32+60HPY	4740	2	506	CR	0.13	0.07	8.17	0.24	62.3	3.34	12.49	13.46	0.01	0.35	0.11	0.05				100.72	
T1-B	-32+60HPY	4740	2	508	CR	0.01	0.05	23.31	0.18	47.5	1.52	11.79	15.52	0	0.2	0.09	0.12				100.27	
T1-B	-32+60HPY	4740	2	511	CR	0	0.38	23.11	0.19	45.88	2	13.8	14.28	0.01	0.31	0.05	0.24				100.25	
T1-B	-32+60HPY	4740	2	512	CR	0.02	0.22	24.36	0.19	44.51	2.89	12.3	15.36	0	0.23	0.06	0.17				100.29	
T1-B	-32+60HPY	4740	2	513	CR	0	0.14	31.78	0.16	37.13	2.72	10.05	17.46	0	0.25	0.1	0.09				99.86	
T1-B	-32+60HPY	4740	2	514	CR	0.04	0.35	8.5	0.33	60.4	3.39	14.4	12.35	0	0.28	0.11	0.1				100.24	
T1-B	-32+60HPY	4740	2	516	CR	0.01	0.05	25.66	0.23	44.46	2.17	11.75	15.82	0	0.22	0.09	0.12				100.59	
T1-B	-32+60HPY	4740	2	604	CR	0.02	0.05	10.24	0.29	59.19	3.23	13.75	12.73	0	0.32	0.08	0.11				100.01	
T1-B	-32+60HPY	4740	2	610	CR	0	0.43	23.84	0.2	44.01	3.49	12.13	15.47	0	0.24	0.09	0.09				99.98	
T1-B	-32+60HPY	4740	2	611	CR	0	0	27.42	0.14	42.56	1.91	11.26	16.17	0	0.23	0.07	0.21				99.99	
T1-B	-32+60HPY	4740	2	613	CR	0.14	0.08	8.13	0.25	61.86	3.82	11.22	14.22	0.01	0.27	0.1	0.08				100.17	
T1-B	-32+60HPY	4740	2	705	CR	0	0.15	33.2	0.17	34.37	3.65	11.49	16.73	0	0.24	0.17	0.26				100.43	
T1-B	-32+60HPY	4740	2	706	CR	0	0.02	18.81	0.19	51.74	1.74	13.88	13.67	0.01	0.29	0.06	0.13				100.54	
T1-B	-32+60HPY	4740	2	708	CR	0.05	0.44	9.02	0.28	59.48	3.76	13.71	12.89	0.01	0.27	0.12	0.09				100.11	
T1-B	-32+60HPY	4740	2	711	CR	0.09	0.3	7.76	0.31	60.3	4.29	14.4	12.21	0.02	0.28	0.08	0.08				100.13	
T1-B	-32+60HPY	4740	2	712	CR	0	0.27	25.95	0.15	40.79	3.21	14.72	13.77	0.02	0.25	0.09	0.19				99.41	
T1-B	-32+60HPY	4740	2	714	CR	0	0.09	24.94	0.19	45.07	1.85	12.81	15.02	0	0.29	0.08	0.17				100.51	
T1-B	-32+60HPY	4740	2	803	CR	0	0.03	22.96	0.24	46.32	2.72	12.23	15.07	0	0.27	0.1	0.18				100.13	
T1-B	-32+60HPY	4740	2	804	CR	0.14	1.1	21.32	0.16	44.51	5.26	11.38	16.19	0.01	0.18	0.23	0				100.47	
T1-B	-32+60HPY	4740	2	807	CR	0.01	0.02	20.31	0.2	48.8	2.87	13.8	13.78	0	0.33	0.05	0.16				100.32	
T1-B	-32+60HPY	4740	3	106	CR	0.06	0.32	8.42	0.28	59.99	4.14	13.65	12.79	0	0.28	0.1	0.03				100.04	
T1-B	-32+60HPY	4740	3	111	CR	0	0.5	16.95	0.2	53.09	1.26	14.56	13.24	0	0.35	0.07	0.18				100.4	
T1-B	-32+60HPY	4740	3	201	CR	0.07	1.66	23.36	0.24	43.38	0.07	15.75	13.47	0.01	0.22	0.11	0.11				98.44	#
T1-B	-32+60HPY	4740	3	206	CR	0.02	0.08	32.42	0.12	36.97	2.56	11.14	16.96	0	0.24	0.13	0.18				100.83	
T1-B	-32+60HPY	4740	3	208	CR	0	0.08	26.71	0.19	41.11	3.28	14.02	14.3	0	0.36	0.1	0.08				100.22	
T1-B	-32+60HPY	4740	3	209	CR	0	0.07	13.63	0.18	56.82	1.42	15.3	12.08	0	0.4	0.02	0.18				100.12	
T1-B	-32+60HPY	4740	3	210	CR	0.01	0.09	13.72	0.26	56.98	1.84	14.09	13	0	0.34	0.07	0.11				100.49	
T1-B	-32+60HPY	4740	3	301	CR	0.01	0.13	22.48	0.26	46.18	3.16	13.06	14.6	0	0.24	0.08	0.19				100.38	
T1-B	-32+60HPY	4740	3	302	CR	0	0.02	19.41	0.18	49.8	2.81	14	13.59	0.01	0.3	0.04	0.27				100.4	
T1-B	-32+60HPY	4740	3	305	CR	0.13	0.97	13.18	0.36	54.44	4.39	11.62	15.1	0.01	0.22	0.16	0.01				100.58	
T1-B	-32+60HPY	4740	3	309	CR	0.02	0.87	29.62	0.21	36.99	3.82	11.87	16.54	0.01	0.3	0.14	0.15				100.53	
T1-B	-32+60HPY	4740	3	311	CR	0	0.09	20.82	0.24	48.7	2.56	13.57	14.13	0	0.25	0.08	0.11				100.56	
T1-B	-32+60HPY	4740	3	401	CR	0.06	0.04	9.3	0.29	59.21	4	14.32	12.23	0	0.3	0.06	0.1				99.9	
T1-B	-32+60HPY	4740	3	407	CR	0.01	0.67	26.36	0.25	40.42	3.06	15.27	13.86	0.01	0.28	0.13	0.21				100.52	
T1-B	-32+60HPY	4740	3	409	CR	0.03	0.23	10.25	0.24	59.26	3.13	12.57	13.6	0	0.24	0.1	0.08				99.72	
T1-B	-32+60HPY	4740	3	411	CR	0.14	0.08	7.47	0.22	62.21	3.63	12.85	13.09	0.01	0.28	0.06	0.08				100.12	
T1-B	-32+60HPY	4740	3	501	CR	0.04	1.68	20.04	0.22	44.69	5	13.64	14.94	0.02	0.25	0.15	0.09				100.76	
T1-B	-32+60HPY	4740	3	504	CR	0.01	0.07	13.89	0.24	57.28	1.46	13.18	13.56	0.01	0.29	0.06	0.08				100.12	
T1-B	-32+60HPY	4740	3	509	CR	0.05	0.17	10.83	0.2	59.53	2.81	12.61	13.76	0.06	0.22	0.08	0.09				100.39	

Name	Fraction	Mount	Cell	Grain	CFM	SiO2	TiO2	Al2O3	V2O3	Cr2O3	Fe2O3	FeO	MgO	CaO	MnO	NiO	ZnO	Nb2O5	Na2O	K2O	Total	Flag
T1-B	-32+60HPY	4740	3	603	CR	0.05	0.42	8.14	0.28	59.82	3.31	17.76	10.15	0	0.41	0.1	0.1				100.53	
T1-B	-32+60HPY	4740	3	610	CR	0.13	0.07	8.23	0.25	60.46	3.54	15.03	11.56	0.01	0.44	0.07	0.05				99.84	
T1-B	-32+60HPY	4740	3	612	CR	0.07	0.12	8.7	0.27	60.98	3.67	13.16	13.1	0	0.3	0.11	0				100.47	
T1-B	-32+60HPY	4740	3	702	CR	0.02	0.02	19.35	0.21	51.44	1	14.01	13.53	0.01	0.31	0.07	0.12				100.09	
T1-B	-32+60HPY	4740	3	706	CR	0.02	0.34	25.3	0.18	43.02	2.43	13.88	14.41	0	0.3	0.12	0.24				100.22	
T1-B	-32+60HPY	4740	4	104	CR	0.02	0.02	20.43	0.23	49.05	2.61	13.16	14.22	0	0.28	0.09	0.15				100.27	
T1-B	-32+60HPY	4740	4	106	CR	0.01	0.06	13.06	0.27	57.78	1.24	13.42	13.2	0	0.24	0.13	0.09				99.49	
T1-B	-32+60HPY	4740	4	201	CR	0.04	0.72	10.25	0.23	57.61	3.22	13.76	13.01	0.02	0.26	0.08	0.03				99.23	
T1-B	-32+60HPY	4740	4	203	CR	0	0.06	29.29	0.17	39.86	1.62	13.03	15.14	0.01	0.31	0.08	0.23				99.77	
T1-B	-32+60HPY	4740	4	204	CR	0.01	0.19	24.1	0.21	44.69	2.48	12.88	14.82	0	0.28	0.09	0.16				99.9	
T1-B	-32+60HPY	4740	4	205	CR	0	0.37	23.31	0.22	45.72	1.74	12.65	14.91	0	0.26	0.08	0.22				99.47	
T1-B	-32+60HPY	4740	4	206	CR	0.01	0.14	17.36	0.23	51.71	1.6	16.04	11.89	0	0.42	0.07	0.18				99.64	
T1-B	-32+60HPY	4740	4	207	CR	0.02	0.04	22.56	0.2	45.23	4.08	14.62	13.64	0.01	0.24	0.06	0.23				100.93	
T1-B	-32+60HPY	4740	4	208	CR	0	0.36	23.84	0.25	45.44	1.31	13.85	14.24	0.01	0.27	0.04	0.27				99.87	
T1-B	-32+60HPY	4740	4	209	CR	0.05	2.88	21.95	0.26	39.95	5.7	12.83	16.26	0.02	0.28	0.13	0.1				100.41	
T1-B	-32+60HPY	4740	4	210	CR	0	0.06	21.69	0.23	45.54	4.04	14.61	13.41	0	0.22	0.08	0.26				100.14	
T1-B	-32+60HPY	4740	4	211	CR	0	0.05	21.47	0.22	45.99	3.91	14.55	13.42	0	0.25	0.07	0.28				100.21	
T1-B	-32+60HPY	4740	4	212	CR	0.12	0.28	7.96	0.2	61.77	3.12	12.14	13.63	0.01	0.28	0.07	0.08				99.66	
T1-B	-32+60HPY	4740	4	213	CR	0.01	0.04	20.37	0.24	49	2.74	13.69	13.96	0	0.24	0.08	0.17				100.54	
T1-B	-32+60HPY	4740	4	214	CR	0	0.04	22.61	0.23	44.68	4.22	14.2	13.77	0.01	0.27	0.05	0.27				100.35	
T1-B	-32+60HPY	4740	4	301	CR	0.01	0.01	30.25	0.2	39.32	1.64	10.83	16.6	0	0.24	0.11	0.16				99.37	
T1-B	-32+60HPY	4740	4	302	CR	0.17	0.53	12.78	0.2	55.63	4.04	10.26	15.48	0.01	0.2	0.16	0.04				99.5	
T1-B	-32+60HPY	4740	4	307	CR	0.03	0.03	15.72	0.18	54.36	1.94	14.32	12.92	0	0.35	0.08	0.14				100.05	
T1-B	-32+60HPY	4740	4	309	CR	0.12	0.08	8.02	0.2	62.23	3.06	11.96	13.67	0	0.25	0.09	0.06				99.73	
T1-B	-32+60HPY	4740	4	310	CR	0.12	0.08	8.13	0.22	62.01	3.55	12.06	13.74	0	0.23	0.09	0.08				100.32	
T1-B	-32+60HPY	4740	4	312	CR	0	0.13	24.06	0.21	44.47	2.73	13.42	14.47	0	0.23	0.07	0.12				99.91	
T1-B	-32+60HPY	4740	4	401	CR	0	0.34	23.17	0.21	46.29	1.14	13.04	14.59	0.01	0.3	0.08	0.26				99.43	
T1-B	-32+60HPY	4740	4	405	CR	0.05	0.19	10.88	0.2	59.41	2.56	12.54	13.71	0	0.26	0.07	0.07				99.93	
T1-B	-32+60HPY	4740	4	408	CR	0.01	0.07	29.45	0.19	37.08	4.79	12.82	15.43	0.01	0.23	0.08	0.28				100.42	
T1-B	-32+60HPY	4740	4	409	CR	0.15	0.14	22.79	0.26	46.3	4.14	9.37	17.1	0	0.2	0.19	0.03				100.68	
T1-B	-32+60HPY	4740	4	410	CR	0	0.12	26.26	0.21	43.77	2	11.85	15.84	0	0.23	0.08	0.14				100.51	
T1-B	-32+60HPY	4740	4	411	CR	0	0.03	22.89	0.2	46.5	2.68	12.31	15.02	0	0.27	0.04	0.16				100.11	
T1-B	-32+60HPY	4740	4	412	CR	0.01	0.22	13.26	0.27	56.63	3.06	12.78	13.92	0.01	0.3	0.05	0.08				100.59	
T1-B	-32+60HPY	4740	4	413	CR	0.02	0.1	10.36	0.29	59.51	3.08	13.63	12.97	0	0.25	0.03	0.05				100.3	
T1-B	-32+60HPY	4740	4	414	CR	0.03	0.17	9.41	0.26	59.9	4.27	12.36	13.75	0	0.29	0.1	0.06				100.59	
T1-B	-32+60HPY	4740	4	415	CR	0.12	0.08	8.18	0.26	62.12	3.74	11.03	14.4	0	0.26	0.13	0.12				100.43	
T1-B	-32+60HPY	4740	4	504	CR	0	0.02	24.18	0.23	44.79	2.84	11.9	15.36	0.01	0.25	0.08	0.17				99.85	
T1-B	-32+60HPY	4740	4	505	CR	0.02	0.09	21.82	0.2	48.53	1.81	13.51	14.28	0	0.33	0.1	0.12				100.8	
T1-B	-32+60HPY	4740	4	507	CR	0.06	0.44	9.9	0.3	59.46	3.51	13.08	13.55	0	0.21	0.07	0.14				100.72	
T1-B	-32+60HPY	4740	4	510	CR	0.07	0.57	8.81	0.27	59.66	3.66	13.37	13.15	0.01	0.28	0.1	0.08				100.02	
T1-B	-32+60HPY	4740	4	511	CR	0.01	0.01	17.64	0.21	52.04	2.01	14.89	12.69	0.01	0.43	0.08	0.18				100.18	
T1-B	-32+60HPY	4740	4	513	CR	0.06	0.2	8.9	0.25	59.57	4.25	13.63	12.8	0	0.26	0.1	0.09				100.11	

Name	Fraction	Mount	Cell	Grain	CFM	SiO2	TiO2	Al2O3	V2O3	Cr2O3	Fe2O3	FeO	MgO	CaO	MnO	NiO	ZnO	Nb2O5	Na2O	K2O	Total	Flag
T1-B	-32+60HPY	4740	4	514	CR	0.02	0.03	14.24	0.18	57.06	1.51	12.91	13.79	0	0.25	0.06	0.12				100.16	
T1-B	-32+60HPY	4740	4	601	CR	0.05	0.37	8.38	0.31	60.23	3.15	15.12	11.77	0.01	0.34	0.08	0.11				99.92	
T1-B	-32+60HPY	4740	4	604	CR	0.01	0.6	24.25	0.37	40.53	5.09	16.01	13.05	0.01	0.35	0.1	0.22				100.59	
T1-B	-32+60HPY	4740	4	607	CR	0.03	0.16	35.9	0.19	32.24	3.32	10.1	17.97	0	0.2	0.08	0.16				100.34	
T1-B	-32+60HPY	4740	4	608	CR	0.02	0.11	39.75	0.15	29.34	2.47	9.24	18.94	0	0.2	0.13	0.23				100.57	
T1-B	-32+60HPY	4740	4	609	CR	0	0.33	23.57	0.19	46.3	1.01	13.06	14.71	0	0.26	0.08	0.25				99.75	
T1-B	-32+60HPY	4740	4	612	CR	0.01	0.01	25.43	0.16	45.28	1.49	12.15	15.5	0	0.24	0.05	0.13				100.43	
T1-B	-32+60HPY	4740	4	614	CR	0.01	0.04	14.76	0.2	56.25	1.95	11.43	14.76	0	0.2	0.08	0.07				99.74	
T1-B	-32+60HPY	4740	4	702	CR	0.01	0.33	23.09	0.22	45.81	2.39	12.9	14.81	0.01	0.3	0.09	0.27				100.22	
T1-B	-32+60HPY	4740	4	703	CR	0.03	0.18	10.94	0.21	59.04	2.9	11.78	14.14	0.02	0.26	0.09	0.1				99.68	
T1-B	-32+60HPY	4740	4	704	CR	0	0.3	22.49	0.19	47.47	1.13	13.83	14.17	0	0.26	0.03	0.19				100.05	
T1-B	-32+60HPY	4740	4	705	CR	0.17	0.55	19.77	0.28	47.53	4.71	9.48	16.75	0	0.16	0.18	0.05				99.63	
T1-B	-32+60HPY	4740	4	708	CR	0.01	0.06	21.55	0.21	48.52	2.37	11.74	15.33	0.01	0.23	0.08	0.09				100.19	
T1-B	-32+60HPY	4740	4	713	CR	0	0.03	25.38	0.23	45.53	1.25	11.87	15.68	0.01	0.21	0.07	0.13				100.39	
T1-B	-32+60HPY	4740	4	716	CR	0.1	0.45	8.04	0.24	60.86	3.3	14.02	12.58	0.01	0.29	0.07	0.06				100.02	
T1-B	-32+60HPY	4740	5	102	CR	0.05	0.12	9.46	0.34	59.4	3.23	15.38	11.59	0.01	0.37	0.11	0.09				100.12	
T1-B	-32+60HPY	4740	5	103	CR	0.13	0.08	8.08	0.23	62.08	3.39	11.27	14.15	0	0.22	0.07	0.06				99.75	
T1-B	-32+60HPY	4740	5	104	CR	0.04	0.25	13.16	0.25	56.3	3.01	12.66	13.88	0	0.29	0.07	0.09				100	
T1-B	-32+60HPY	4740	5	105	CR	0	0.04	28.49	0.26	39.97	3.08	12.36	15.59	0	0.27	0.07	0.21				100.33	
T1-B	-32+60HPY	4740	5	107	CR	0.01	0.12	14.35	0.22	54.61	3.26	13.66	13.3	0.01	0.24	0.04	0.07				99.88	
T1-B	-32+60HPY	4740	5	111	CR	0.04	0.13	8.11	0.27	61.12	3.57	13.92	12.45	0.01	0.33	0.06	0.09				100.1	
T1-B	-32+60HPY	4740	5	112	CR	0.02	0.03	18.54	0.24	51.6	2.48	12.27	14.65	0	0.23	0.1	0.11				100.26	
T1-B	-32+60HPY	4740	5	113	CR	0.01	0.03	22.54	0.19	44.62	4.28	14.47	13.6	0.02	0.25	0.11	0.24				100.35	
T1-B	-32+60HPY	4740	5	201	CR	0.01	0.04	18.75	0.19	51.27	1.82	13.28	13.92	0	0.24	0.07	0.14				99.73	
T1-B	-32+60HPY	4740	5	202	CR	0.06	0.32	8.46	0.3	60.46	3.38	14.47	12.26	0.01	0.33	0.1	0.07				100.2	
T1-B	-32+60HPY	4740	5	203	CR	0.08	0.08	8.33	0.27	61.78	3.49	12.14	13.68	0.01	0.27	0.07	0.08				100.27	
T1-B	-32+60HPY	4740	5	204	CR	0	0.09	16.98	0.25	53.66	1.08	13.99	13.29	0	0.29	0.06	0.07				99.75	
T1-B	-32+60HPY	4740	5	205	CR	0.05	1.35	8.98	0.3	53.23	7.68	15.95	11.86	0	0.29	0.17	0.09				99.95	
T1-B	-32+60HPY	4740	5	206	CR	0.13	0.21	12.47	0.14	57.5	3.31	11.38	14.69	0	0.26	0.15	0.06				100.31	
T1-B	-32+60HPY	4740	5	209	CR	0	0.04	25	0.17	43.29	3.13	13.82	14.29	0.01	0.28	0.09	0.14				100.24	
T1-B	-32+60HPY	4740	5	212	CR	0.05	0.15	8.1	0.26	60.61	3.56	14.51	12	0.02	0.33	0.09	0.06				99.73	
T1-B	-32+60HPY	4740	5	213	CR	0.02	0.12	16.23	0.27	54.86	1.65	12.22	14.53	0	0.21	0.04	0.15				100.3	
T1-B	-32+60HPY	4740	5	214	CR	0.01	0.14	24.35	0.22	42.58	3.8	16.73	12.47	0	0.27	0.05	0.18				100.79	
T1-B	-32+60HPY	4740	5	216	CR	0.15	0.06	8.18	0.25	62.1	3.57	11.17	14.28	0.02	0.22	0.07	0.09				100.18	
T1-B	-32+60HPY	4740	5	301	CR	0.06	0.45	9.01	0.3	59.21	3.82	13.68	12.85	0	0.28	0.11	0.04				99.8	
T1-B	-32+60HPY	4740	5	302	CR	0.14	0.07	8.1	0.23	62.43	3.28	12.1	13.71	0.01	0.29	0.09	0.06				100.52	
T1-B	-32+60HPY	4740	5	303	CR	0	0.39	23.76	0.18	44.96	2.9	12.3	15.38	0	0.29	0.09	0.19				100.44	
T1-B	-32+60HPY	4740	5	305	CR	0	0.04	26.42	0.22	44.22	0	13.12	14.22	0.01	0.24	0.08	0.18				98.76	
T1-B	-32+60HPY	4740	5	310	CR	0	0.05	26.15	0.2	42.63	2.7	13.32	14.77	0	0.24	0.07	0.25				100.38	
T1-B	-32+60HPY	4740	5	311	CR	0.11	0.15	22.82	0.26	46.03	4.45	9.21	17.24	0.01	0.18	0.14	0.01				100.61	
T1-B	-32+60HPY	4740	5	312	CR	0.01	0	20.1	0.21	48.95	2.78	13.97	13.66	0.01	0.24	0.08	0.15				100.17	
T1-B	-32+60HPY	4740	5	313	CR	0.01	0.39	15.88	0.21	52.8	2.51	14.85	12.79	0	0.32	0.03	0.24				100.02	

Name	Fraction	Mount	Cell	Grain	CFM	SiO2	TiO2	Al2O3	V2O3	Cr2O3	Fe2O3	FeO	MgO	CaO	MnO	NiO	ZnO	Nb2O5	Na2O	K2O	Total	Flag
T1-B	-32+60HPY	4740	5	315	CR	0.13	0.07	8.28	0.23	61.93	3.71	11.99	13.84	0	0.26	0.14	0.06				100.62	
T1-B	-32+60HPY	4740	5	402	CR	0	0.15	14.33	0.22	54.34	2.96	15.03	12.36	0.01	0.32	0.06	0.21				99.99	
T1-B	-32+60HPY	4740	5	408	CR	0	0.34	22.58	0.29	45.32	3.31	13.4	14.46	0	0.25	0.14	0.12				100.2	
T1-B	-32+60HPY	4740	5	410	CR	0.02	0.03	25.62	0.15	44.99	1.68	11.4	15.97	0.01	0.26	0.09	0.17				100.38	
T1-B	-32+60HPY	4740	5	411	CR	0.13	0.46	7.77	0.28	61.42	3.7	12.44	13.62	0.01	0.29	0.1	0.05				100.26	
T1-B	-32+60HPY	4740	5	413	CR	0.01	0.13	27.21	0.18	38.72	4.48	16.17	13.05	0	0.28	0.14	0.16				100.51	
T1-B	-32+60HPY	4740	5	501	CR	0.09	0.31	7.86	0.29	60.69	4.16	13.93	12.61	0	0.24	0.09	0.04				100.3	
T1-B	-32+60HPY	4740	5	503	CR	0.01	0.05	12.36	0.32	56.67	3.25	13.83	12.91	0	0.22	0.11	0.14				99.86	
T1-B	-32+60HPY	4740	5	506	CR	0.01	0.06	21.97	0.23	47.17	2.6	13.05	14.46	0	0.23	0.09	0.14				100.01	
T1-B	-32+60HPY	4740	5	509	CR	0	0.29	22.37	0.19	47.71	1.18	13.75	14.24	0	0.23	0.08	0.26				100.3	
T1-B	-32+60HPY	4740	5	511	CR	0.12	0.13	22.78	0.24	45.99	4.24	9.23	17.09	0.01	0.24	0.13	0.05				100.24	
T1-B	-32+60HPY	4740	5	513	CR	0	0.02	25.04	0.19	43.69	3.22	13.3	14.7	0.02	0.28	0.1	0.16				100.73	
T1-B	-32+60HPY	4740	5	514	CR	0.07	0.05	10.02	0.21	60.58	3.09	13.08	13.38	0.01	0.25	0.11	0.09				100.93	
T1-B	-32+60HPY	4740	5	515	CR	0.14	0.12	22.72	0.26	45.9	4.59	9.15	17.2	0	0.17	0.15	0.08				100.49	
T1-B	-32+60HPY	4740	5	601	CR	0.01	0.03	20.12	0.21	49.01	2.6	13.92	13.7	0	0.23	0.1	0.14				100.06	
T1-B	-32+60HPY	4740	5	605	CR	0.13	0.24	7.38	0.2	61.25	3.49	15.19	11.53	0	0.42	0.14	0.13				100.12	
T1-B	-32+60HPY	4740	5	606	CR	0.13	0.21	22.82	0.25	45.67	4.32	9.86	16.79	0.01	0.19	0.19	0.05				100.48	
T1-B	-32+60HPY	4740	5	609	CR	0	0	9.43	0.19	58.7	3.94	16.36	10.95	0	0.29	0	0.16				100.02	
T1-B	-32+60HPY	4740	5	615	CR	0.07	0.04	10.06	0.22	60.79	2.9	12.21	13.88	0.02	0.25	0.08	0.03				100.52	
T1-B	-32+60HPY	4740	5	616	CR	0	0.19	34.02	0.23	34.79	2.64	10.56	17.5	0.01	0.19	0.07	0.22				100.43	
T1-B	-32+60HPY	4740	5	701	CR	0	0.53	24.12	0.24	44.65	2.73	12.12	15.68	0	0.22	0.1	0.19				100.58	
T1-B	-32+60HPY	4740	5	703	CR	0.01	0.17	22.25	0.27	47.2	2.72	12.6	14.93	0	0.3	0.07	0.15				100.66	
T1-B	-32+60HPY	4740	5	704	CR	0	0.64	22.85	0.29	45.31	2.86	13.13	14.91	0	0.25	0.1	0.24				100.58	
T1-B	-32+60HPY	4740	5	705	CR	0	0.05	28.05	0.17	40.78	2.17	14.85	13.96	0.02	0.37	0.1	0.16				100.67	
T1-B	-32+60HPY	4740	5	706	CR	0.02	0.05	13.6	0.22	55.67	3.11	13.57	13.16	0.01	0.35	0.08	0.09				99.93	
T1-B	-32+60HPY	4740	5	707	CR	0	0.06	23.3	0.18	47.12	1.91	11.65	15.6	0.01	0.2	0.06	0.1				100.19	
T1-B	-32+60HPY	4740	5	709	CR	0.01	0	28.05	0.21	42.03	1.61	11.22	16.24	0.01	0.19	0.09	0.19				99.86	
T1-B	-32+60HPY	4740	5	710	CR	0.01	0.15	12.22	0.24	55.79	2.9	17.16	10.56	0	0.56	0.09	0.07				99.76	
T1-B	-32+60HPY	4740	5	713	CR	0.01	0.08	22.2	0.22	48.35	1.98	11.69	15.49	0	0.23	0.08	0.12				100.46	
T1-B	-32+60HPY	4740	5	714	CR	0	1.02	17.38	0.54	48.05	4.07	17.05	11.86	0	0.43	0.1	0.13				100.62	
T1-B	-32+60HPY	4740	5	801	CR	0.02	0.05	30.13	0.2	39.24	2.9	10.44	17.12	0	0.21	0.12	0.14				100.57	
T1-B	-32+60HPY	4740	5	802	CR	0.06	0.34	7.9	0.29	59.49	3.55	17.72	9.94	0	0.45	0.1	0.06				99.9	
T1-B	-32+60HPY	4740	5	805	CR	0.05	0.04	16.77	0.19	54.26	1.64	12.79	14.1	0	0.36	0.09	0.11				100.41	
T1-B	-32+60HPY	4740	5	806	CR	0.01	0.04	24.59	0.19	45.7	2	12.05	15.49	0.01	0.24	0.07	0.22				100.61	
T1-B	-32+60HPY	4740	5	808	CR	0.02	0.06	14.8	0.2	54.03	3.45	14.91	12.48	0	0.46	0.02	0.23				100.66	
T1-B	-32+60HPY	4740	5	809	CR	0	0.34	23.67	0.18	46.18	1.44	12.62	15.08	0	0.27	0.03	0.21				100.02	
T1-B	-32+60HPY	4740	5	810	CR	0.02	0.02	15.6	0.25	53.67	2.18	17.17	11.07	0.02	0.47	0.05	0.11				100.63	
T1-B	-32+60HPY	4740	5	811	CR	0	0.04	25.84	0.17	44.49	2.23	11.57	15.97	0.01	0.28	0.07	0.15				100.82	
T1-B	-32+60HPY	4740	5	812	CR	0.01	0.03	22.85	0.21	46.22	2.64	12.96	14.59	0.01	0.23	0.09	0.17				99.98	
T1-B	-16+32HPY	4741	1	103	CR	0.12	0.75	13.33	0.24	52.48	5.98	13.47	13.78	0	0.21	0.18	0.09				100.63	
T1-B	-16+32HPY	4741	1	104	CR	0.03	0.05	34.73	0.12	34.27	3.15	10.07	17.88	0.01	0.25	0.13	0.12				100.79	
T1-B	-16+32HPY	4741	1	105	CR	0.14	0.53	13.03	0.22	55.9	3.88	10.52	15.47	0	0.2	0.12	0.02				100.03	

Name	Fraction	Mount	Cell	Grain	CFM	SiO2	TiO2	Al2O3	V2O3	Cr2O3	Fe2O3	FeO	MgO	CaO	MnO	NiO	ZnO	Nb2O5	Na2O	K2O	Total	Flag
T1-B	-16+32HPY	4741	1	106	CR	0.03	0.05	38.29	0.15	31.16	1.69	10.26	18.01	0.01	0.2	0.13	0.22				100.2	
T1-B	-16+32HPY	4741	1	107	CR	0.08	0.13	20.4	0.24	45.13	6.79	13.29	14.3	0.01	0.23	0.09	0.08				100.76	
T1-B	-16+32HPY	4741	1	108	CR	0.14	0.14	22.68	0.27	46.02	4.21	9.19	17.13	0.02	0.16	0.17	0.07				100.21	
T1-B	-16+32HPY	4741	1	201	CR	0.01	0.18	10.91	0.18	59.57	2.88	12.42	13.88	0	0.31	0.11	0.06				100.5	
T1-B	-16+32HPY	4741	1	202	CR	0.02	0.04	15.61	0.24	55.86	1.33	13.23	13.79	0.01	0.26	0.05	0.1				100.53	
T1-B	-16+32HPY	4741	1	205	CR	0	0.05	36.77	0.14	32.33	2.14	9.87	18.04	0	0.22	0.12	0.2				99.87	
T1-B	-16+32HPY	4741	1	206	CR	0.02	0.01	22.84	0.18	46.75	2.44	13.06	14.59	0.01	0.26	0.08	0.17				100.41	
T1-B	-16+32HPY	4741	1	207	CR	0.15	0.2	38.67	0.2	28.18	4.98	8.17	19.55	0	0.15	0.29	0.08				100.61	
T1-B	-16+32HPY	4741	1	208	CR	0.03	0.04	31.15	0.15	38.48	2.42	10.7	17.05	0.02	0.2	0.1	0.18				100.5	
T1-B	-16+32HPY	4741	2	102	CR	0.04	0.45	9.04	0.25	59.11	3.89	13.85	12.76	0	0.29	0.09	0.13				99.91	
T1-B	-16+32HPY	4741	2	107	CR	0.17	0.07	8.15	0.2	62.12	3.63	11.58	14.02	0	0.31	0.11	0.01				100.37	
T1-B	-16+32HPY	4741	2	108	CR	0.09	2.22	20.65	0.24	42.42	6.03	12.86	15.79	0.02	0.29	0.12	0.04				100.75	
T1-B	-16+32HPY	4741	2	109	CR	0.01	0.05	25.92	0.15	44.74	1.31	12.35	15.41	0	0.28	0.07	0.15				100.44	
T1-B	-16+32HPY	4741	2	201	CR	0.16	1.1	15.22	0.29	52.2	3.52	11.29	15.43	0	0.17	0.2	0.08				99.64	
T1-B	-16+32HPY	4741	2	204	CR	0.03	5.43	16.29	0.32	36.9	10.52	15.05	15.71	0.02	0.36	0.13	0.09				100.84	
T1-B	-16+32HPY	4741	2	205	CR	0.16	0.08	7.66	0.21	61.17	4.59	11.68	13.83	0.01	0.19	0.12	0				99.7	
T1-B	-16+32HPY	4741	2	209	CR	0	0.12	28.98	0.14	38.94	3.03	14.14	14.6	0	0.23	0.07	0.12				100.35	
T1-B	-16+32HPY	4741	2	210	CR	0	0.08	30.62	0.19	39.03	2.23	12.05	16.22	0.01	0.21	0.08	0.27				100.97	
T1-B	-16+32HPY	4741	2	308	CR	0	0.2	12.89	0.27	56.66	3	13.04	13.61	0	0.28	0.07	0.11				100.13	
T1-B	-16+32HPY	4741	2	309	CR	0.14	0.15	22.92	0.29	46.1	4.44	9.22	17.27	0.01	0.2	0.18	0.05				100.95	
T1-B	-16+32HPY	4741	2	402	CR	0.14	0.06	8.17	0.24	61.88	3.53	11.25	14.14	0.01	0.24	0.1	0.15				99.9	
T1-B	-16+32HPY	4741	2	404	CR	0	0.16	23.84	0.2	45.14	2.84	12.38	15.17	0.01	0.28	0.07	0.18				100.26	
T1-B	-16+32HPY	4741	2	405	CR	0	0.03	14.21	0.18	57.35	1.5	13.02	13.79	0	0.25	0.04	0.04				100.42	
T1-B	-16+32HPY	4741	2	406	CR	0.11	0.3	22.43	0.23	46.46	4.22	9.25	17.24	0.01	0.22	0.21	0.04				100.71	
T1-B	-16+32HPY	4741	2	407	CR	0.07	0.45	9.15	0.3	59.34	3.55	14.29	12.53	0	0.29	0.07	0.12				100.14	
T1-B	-16+32HPY	4741	2	501	CR	0	0.07	15.68	0.27	54.45	2.22	12.83	13.92	0.01	0.27	0.07	0.15				99.94	
T1-B	-16+32HPY	4741	2	503	CR	0	1.13	12.04	0.27	54.59	3.4	16.39	11.82	0.01	0.38	0.14	0.1				100.25	
T1-B	-16+32HPY	4741	2	506	CR	0.12	0.1	7.57	0.22	62.62	3.43	12.86	13.2	0.01	0.26	0.08	0.12				100.59	
T1-B	-16+32HIL	4741	3	101	CR	0.03	0.35	9.88	0.25	59.18	3.5	11.96	13.98	0	0.26	0.08	0.08				99.55	
T1-B	-16+32HIL	4741	3	102	CR	0.01	0.17	13.28	0.31	55.16	2.48	16.31	11.28	0	0.44	0.12	0.09				99.65	
T1-B	-16+32HIL	4741	3	103	CR	0.11	0.16	7.48	0.2	62.51	3.51	11.93	13.74	0	0.27	0.1	0.02				100.02	
T1-B	-16+32HIL	4741	3	105	CR	0.04	0.19	8.35	0.24	60.23	3.74	15.12	11.71	0	0.38	0.12	0.14				100.27	
T1-B	-16+32HIL	4741	3	106	CR	0.07	0.08	8.35	0.26	61.43	3.39	12.29	13.49	0	0.25	0.1	0.01				99.71	
T1-B	-16+32HIL	4741	3	107	CR	0.01	0.01	15.79	0.18	55.6	1.44	12.6	14.13	0.01	0.29	0.08	0.14				100.27	
T1-B	-16+32HIL	4741	3	201	CR	0.01	0.21	23.43	0.2	44.75	3.15	12.18	15.13	0.01	0.29	0.08	0.1				99.55	
T1-B	-16+32HIL	4741	3	202	CR	0.04	0.11	9.23	0.27	60.49	3.27	13.82	12.73	0	0.26	0.09	0.07				100.36	
T1-B	-16+32HIL	4741	3	203	CR	0.07	1.55	11.02	0.33	51.83	6.91	16.78	11.81	0.01	0.34	0.19	0.07				100.9	
T1-B	-16+32HIL	4741	3	204	CR	0.07	0.21	15.24	0.27	49.23	7.2	15.14	12.45	0.01	0.29	0.14	0.09				100.32	
T1-B	-16+32HIL	4741	3	208	CR	0.03	1.17	12.52	0.22	55.35	3.31	14.21	13.53	0	0.26	0.12	0.11				100.83	
T1-B	-16+32HIL	4741	3	303	CR	0.02	0.04	10.77	0.34	58.43	3.26	13.83	12.66	0	0.35	0.11	0.12				99.92	
T1-B	-16+32HIL	4741	3	305	CR	0.03	0.69	10.58	0.19	57.77	3.47	13.47	13.35	0	0.29	0.08	0.11				100.03	
T1-B	-16+32HIL	4741	3	306	CR	0.05	0.04	11.28	0.28	58.57	3.02	12.91	13.4	0	0.27	0.06	0.08				99.97	

Name	Fraction	Mount	Cell	Grain	CFM	SiO2	TiO2	Al2O3	V2O3	Cr2O3	Fe2O3	FeO	MgO	CaO	MnO	NiO	ZnO	Nb2O5	Na2O	K2O	Total	Flag
T1-B	-16+32HIL	4741	3	401	CR	0.02	0.05	17.24	0.2	52.36	2.37	12.81	14.01	0	0.26	0.09	0.1				99.5	
T1-B	-16+32HIL	4741	3	403	CR	0.05	0.09	8.91	0.26	59.84	3.99	15.36	11.66	0	0.36	0.1	0.12				100.74	
T1-B	-16+32HIL	4741	3	405	CR	0.04	0.22	9.22	0.29	60.2	3.42	14.46	12.38	0.01	0.34	0.08	0.02				100.66	
T1-B	-16+32HIL	4741	3	407	CR	0.01	0.41	13.15	0.23	53.45	4.35	16.79	11.28	0	0.33	0.07	0.13				100.2	
T1-B	-16+32HIL	4741	3	503	CR	0.06	0.24	9.33	0.29	60.05	3.43	13.36	13.1	0	0.23	0.11	0.07				100.25	
T1-B	-16+32HIL	4741	3	504	CR	0.04	0.21	10.05	0.23	59.36	3.12	13.8	12.77	0.02	0.36	0.06	0.08				100.08	
T1-B	-16+32HIL	4741	3	505	CR	0.05	0.2	10.31	0.26	59.25	3.17	13.04	13.3	0	0.31	0.08	0.12				100.09	
T1-B	-16+32HIL	4741	4	103	CR	0.05	0.38	8.2	0.25	59.45	4.3	15.11	11.81	0	0.35	0.07	0.08				100.06	
T1-B	-16+32HIL	4741	4	105	CR	0.12	0.07	15.33	0.2	54.9	3.59	10.19	15.76	0	0.21	0.12	0.09				100.55	
T1-B	-16+32HIL	4741	4	106	CR	0.04	4.51	10.42	0.26	37.51	16.2	20.28	11.01	0.03	0.56	0.16	0.11				101.1	#
T1-B	-16+32HIL	4741	4	107	CR	0.02	6.35	12.28	0.35	29.65	19.47	20.38	12.29	0.02	0.55	0.26	0.03				101.63	#
T1-B	-16+32HIL	4741	4	201	CR	0.03	0.37	15.62	0.26	50.57	4.85	15.96	12.03	0	0.34	0.12	0.07				100.2	
T1-B	-16+32HIL	4741	4	204	CR	0.05	0.33	9.2	0.27	59.41	2.92	15.41	11.58	0.01	0.43	0.09	0.1				99.8	
T1-B	-16+32HIL	4741	4	206	CR	0	0.02	20.63	0.24	48.37	2.71	14.07	13.61	0	0.33	0.08	0.24				100.3	
T1-B	-16+32HIL	4741	4	302	CR	0.03	0.45	9.11	0.28	59.72	3.58	13.87	12.85	0	0.29	0.11	0.05				100.35	
T1-B	-16+32HIL	4741	4	304	CR	0.12	0.17	11	0.18	59.67	3.16	11.6	14.5	0	0.24	0.1	0.11				100.85	
T1-B	-16+32HIL	4741	4	307	CR	0.02	0	23.87	0.21	46.34	1.27	14	13.98	0.01	0.38	0.04	0.17				100.3	
T1-B	-16+32HIL	4741	4	401	CR	0.12	0.07	7.98	0.18	62.45	3.29	11.46	14.06	0	0.23	0.11	0.04				99.99	
T1-B	-16+32HIL	4741	4	406	CR	0.07	0.08	9.2	0.23	60.9	2.99	13.28	13.04	0.01	0.24	0.09	0.08				100.19	
T1-B	-16+32HIL	4741	4	409	CR	0.04	0.08	9.34	0.28	60.25	3.45	14.31	12.43	0.01	0.29	0.1	0.13				100.7	
T1-B	-16+32HIL	4741	4	501	CR	0.04	0.2	10.79	0.2	59.41	2.8	12.29	13.87	0	0.29	0.06	0.05				99.99	
T1-B	-16+32HIL	4741	4	502	CR	0	0.05	36.28	0.15	33.05	1.72	11.07	17.29	0	0.17	0.08	0.27				100.13	
T1-B	-16+32HIL	4741	4	506	CR	0.06	0.17	9.46	0.29	59.65	3.98	13.09	13.25	0.01	0.25	0.09	0.12				100.42	
T1-B	-32+60HIL	4742	1	103	CR	0.03	0.33	12.39	0.2	56.44	3.28	13.08	13.49	0.01	0.34	0.15	0.07				99.81	
T1-B	-32+60HIL	4742	1	105	CR	0.01	0.05	11.85	0.31	56.18	2.91	17.93	10.03	0.01	0.49	0.08	0.09				99.96	
T1-B	-32+60HIL	4742	1	107	CR	0.05	0.46	8.97	0.3	59.32	3.78	13.45	12.99	0.04	0.29	0.05	0.1				99.79	
T1-B	-32+60HIL	4742	1	109	CR	0.02	0.04	13.29	0.26	57.36	1.65	13.66	13.07	0	0.34	0.04	0.12				99.85	
T1-B	-32+60HIL	4742	1	202	CR	0.02	0.04	17.15	0.23	51.58	1.99	15.93	11.8	0	0.46	0.08	0.16				99.44	
T1-B	-32+60HIL	4742	1	209	CR	0	0.1	17.46	0.19	51.66	1.39	16.67	11.41	0	0.5	0.05	0.17				99.59	
T1-B	-32+60HIL	4742	1	210	CR	0.01	0.07	24.31	0.17	44.24	2.71	13.39	14.41	0	0.31	0.08	0.12				99.84	
T1-B	-32+60HIL	4742	1	211	CR	0.03	0.06	13.87	0.23	56.29	2.04	13.59	13.19	0.01	0.29	0.06	0.12				99.77	
T1-B	-32+60HIL	4742	1	301	CR	0.02	0	23.16	0.21	45.88	2.6	12.32	14.94	0.02	0.24	0.11	0.11				99.6	
T1-B	-32+60HIL	4742	1	302	CR	0.03	1.86	11.02	0.26	51.09	6.89	15.61	12.54	0.03	0.39	0.14	0.07				99.93	
T1-B	-32+60HIL	4742	1	303	CR	0.11	0.08	7.93	0.18	61.37	3.49	13.79	12.46	0.02	0.33	0.07	0.05				99.87	
T1-B	-32+60HIL	4742	1	304	CR	0	0.37	19.68	0.23	49.15	1.59	15.46	12.7	0	0.38	0.08	0.18				99.83	
T1-B	-32+60HIL	4742	1	305	CR	0.13	0.19	7.73	0.2	61.37	3.53	13.1	12.87	0.01	0.34	0.06	0.05				99.59	
T1-B	-32+60HIL	4742	1	306	CR	0.01	0.19	15.76	0.23	52.59	1.92	17.37	10.79	0.01	0.56	0.04	0.08				99.55	
T1-B	-32+60HIL	4742	1	309	CR	0.01	0.04	22.16	0.22	47	2.7	12.21	14.95	0.01	0.26	0.09	0.12				99.76	
T1-B	-32+60HIL	4742	1	401	CR	0	0.05	23.91	0.23	44.99	2.6	12.99	14.66	0.01	0.26	0.05	0.17				99.91	
T1-B	-32+60HIL	4742	1	403	CR	0	0.25	24.92	0.19	43.03	3.78	12.65	15.21	0.01	0.28	0.1	0.12				100.54	
T1-B	-32+60HIL	4742	1	404	CR	0.02	0.04	15.19	0.21	53.71	1.65	17.36	10.69	0.02	0.48	0.07	0.16				99.6	
T1-B	-32+60HIL	4742	1	406	CR	0.02	0.54	9.58	0.3	58.67	3.35	13.87	12.79	0	0.3	0.06	0.06				99.54	

Name	Fraction	Mount	Cell	Grain	CFM	SiO2	TiO2	Al2O3	V2O3	Cr2O3	Fe2O3	FeO	MgO	CaO	MnO	NiO	ZnO	Nb2O5	Na2O	K2O	Total	Flag
T1-B	-32+60HIL	4742	1	408	CR	0.15	0.22	6.96	0.23	61.38	2.94	17.26	10.03	0.01	0.48	0.12	0.11				99.88	
T1-B	-32+60HIL	4742	1	411	CR	0	0.38	17.31	0.25	52.01	1.69	14.62	13.08	0	0.28	0.04	0.19				99.86	
T1-B	-32+60HIL	4742	1	505	CR	0.05	0.12	9.52	0.25	58.59	3.28	16.47	10.74	0	0.48	0.06	0.11				99.67	
T1-B	-32+60HIL	4742	1	508	CR	0	0.16	21.34	0.26	47.3	3.19	12.78	14.63	0	0.26	0.1	0.16				100.17	
T1-B	-32+60HIL	4742	1	510	CR	0.01	0.07	15.05	0.25	53.78	2.52	16.73	11.27	0	0.46	0.07	0.05				100.24	
T1-B	-32+60HIL	4742	1	602	CR	0.05	0.33	8.7	0.24	60.29	3.75	12.71	13.45	0.02	0.24	0.06	0.13				99.95	
T1-B	-32+60HIL	4742	1	603	CR	0.13	0.01	8.45	0.2	61.85	3.24	11.99	13.7	0.01	0.26	0.09	0.08				100.01	
T1-B	-32+60HIL	4742	1	604	CR	0.12	0.06	8.03	0.21	62.03	3.31	11.91	13.69	0	0.25	0.07	0.05				99.73	
T1-B	-32+60HIL	4742	1	607	CR	0.02	0.17	25.72	0.17	40.76	4.11	15.31	13.41	0	0.32	0.07	0.3				100.33	
T1-B	-32+60HIL	4742	1	609	CR	0.06	0.13	9.42	0.25	59.95	3.34	13.12	13.08	0.01	0.29	0.07	0.09				99.82	
T1-B	-32+60HIL	4742	1	702	CR	0.01	0.07	11.94	0.3	55.97	3.2	17.11	10.57	0.01	0.49	0.11	0.09				99.87	
T1-B	-32+60HIL	4742	1	704	CR	0	0.02	18.89	0.19	49.92	1.91	16.47	11.72	0.01	0.43	0.08	0.15				99.79	
T1-B	-32+60HIL	4742	1	707	CR	0.06	0.17	8.4	0.29	60.63	3.51	13.57	12.71	0	0.26	0.09	0.08				99.76	
T1-B	-32+60HIL	4742	1	708	CR	0.04	0.69	10.65	0.3	55.6	3.43	18.82	9.65	0	0.53	0.07	0.12				99.89	
T1-B	-32+60HIL	4742	1	709	CR	0.01	0.01	14.7	0.26	55.35	2.35	13.01	13.64	0	0.26	0.09	0.09				99.77	
T1-B	-32+60HIL	4742	1	710	CR	0	0.02	16.04	0.19	51.55	3.05	17.34	10.8	0.01	0.49	0.05	0.2				99.74	
T1-B	-32+60HIL	4742	2	101	CR	0	0.08	12.97	0.29	55.77	2.26	17.41	10.49	0.06	0.55	0.02	0.09				99.98	
T1-B	-32+60HIL	4742	2	105	CR	0.14	0.57	6.13	0.25	61.04	5.27	13.09	12.99	0.01	0.32	0.09	0				99.9	
T1-B	-32+60HIL	4742	2	109	CR	0.01	0.2	14.36	0.22	54.15	2.93	15.21	12.25	0	0.34	0.1	0.2				99.95	
T1-B	-32+60HIL	4742	2	110	CR	0	0.05	16.84	0.22	51.95	2.12	16.07	11.71	0.01	0.51	0.06	0.11				99.65	
T1-B	-32+60HIL	4742	2	201	CR	0	0.06	15.8	0.16	52.51	2.26	17.02	11.01	0.01	0.44	0.03	0.22				99.52	
T1-B	-32+60HIL	4742	2	203	CR	0.09	1.09	11.63	0.31	55.98	3.91	11.75	14.81	0.01	0.23	0.15	0.1				100.05	
T1-B	-32+60HIL	4742	2	207	CR	0.05	0.23	14.85	0.17	52.28	3.03	17.31	10.78	0	0.44	0.08	0.13				99.36	
T1-B	-32+60HIL	4742	2	301	CR	0.02	0	22.27	0.19	47.43	1.63	13.34	14.14	0	0.3	0.08	0.21				99.59	
T1-B	-32+60HIL	4742	2	302	CR	0.02	0.07	18.58	0.17	50.76	1.69	15.45	12.36	0.01	0.5	0.1	0.08				99.78	
T1-B	-32+60HIL	4742	2	303	CR	0.1	0.01	8.01	0.23	61.98	3.49	12.29	13.45	0.02	0.28	0.09	0.06				100	
T1-B	-32+60HIL	4742	2	307	CR	0.03	0.02	14.5	0.19	55.14	1.87	15.35	11.97	0.01	0.48	0.07	0.1				99.73	
T1-B	-32+60HIL	4742	2	310	CR	0	0.02	25.11	0.2	44.58	2.75	11.41	15.91	0	0.27	0.11	0.21				100.57	
T1-B	-32+60HIL	4742	2	401	CR	0.02	0.12	12.19	0.26	55.83	2.92	17.02	10.65	0.01	0.51	0.11	0.14				99.8	
T1-B	-32+60HIL	4742	2	402	CR	0	0.13	16.13	0.17	53.47	1.74	15.44	12.27	0	0.33	0.05	0.14				99.87	
T1-B	-32+60HIL	4742	2	403	CR	0.02	0.02	16.75	0.19	53.93	1.4	12.62	14.06	0	0.28	0.07	0.11				99.45	
T1-B	-32+60HIL	4742	2	404	CR	0.01	0.1	22.58	0.22	46.06	1.92	15.26	12.97	0.01	0.35	0.07	0.15				99.7	
T1-B	-32+60HIL	4742	2	405	CR	0	0.07	16.14	0.22	53.53	1.68	15.61	12.11	0.01	0.37	0.01	0.15				99.89	
T1-B	-32+60HIL	4742	2	409	CR	0	0.17	14.86	0.25	55.04	1.53	15.38	12.18	0.01	0.38	0.08	0.18				100.06	
T1-B	-32+60HIL	4742	2	410	CR	0.02	0.18	17.54	0.15	49.73	4.02	15.9	12.25	0.01	0.28	0.14	0.13				100.35	
T1-B	-32+60HIL	4742	2	501	CR	0.13	0.16	22.46	0.27	45.84	4.21	9.37	16.9	0	0.19	0.16	0.1				99.79	
T1-B	-32+60HIL	4742	2	502	CR	0.01	0.19	25.36	0.17	42.18	2.46	15.59	13.06	0.02	0.39	0.08	0.12				99.63	
T1-B	-32+60HIL	4742	2	503	CR	0.01	0.05	15.71	0.19	55.33	1.35	13.51	13.51	0.02	0.32	0.05	0.2				100.24	
T1-B	-32+60HIL	4742	2	504	CR	0	0.04	12.42	0.23	55.18	3.69	16.22	11.14	0.01	0.47	0.05	0.18				99.61	
T1-B	-32+60HIL	4742	2	505	CR	0.01	0.24	16.48	0.26	50.91	3.04	16.78	11.37	0.01	0.42	0.05	0.15				99.7	
T1-B	-32+60HIL	4742	2	508	CR	0.02	0.11	12.26	0.2	57.53	1.8	15.49	11.76	0.01	0.39	0.04	0.18				99.79	
T1-B	-32+60HIL	4742	2	601	CR	0	0.17	14.95	0.25	53.37	2.77	15.4	12.1	0.04	0.36	0.05	0.07				99.52	

Name	Fraction	Mount	Cell	Grain	CFM	SiO2	TiO2	Al2O3	V2O3	Cr2O3	Fe2O3	FeO	MgO	CaO	MnO	NiO	ZnO	Nb2O5	Na2O	K2O	Total	Flag
T1-B	-32+60HIL	4742	2	602	CR	0.01	0.04	18.22	0.2	49.74	2.52	17.28	11.09	0.01	0.51	0.06	0.06				99.74	
T1-B	-32+60HIL	4742	2	605	CR	0	0.05	14.83	0.25	53.99	3.14	14.62	12.64	0.01	0.31	0.08	0.25				100.17	
T1-B	-32+60HIL	4742	2	607	CR	0.04	0.13	8.96	0.27	60.14	3.37	13.54	12.71	0	0.29	0.1	0.11				99.66	
T1-B	-32+60HIL	4742	2	609	CR	0.02	0.39	11.34	0.27	56.31	4.08	15.2	12.08	0.02	0.4	0.08	0.06				100.24	
T1-B	-32+60HIL	4742	2	610	CR	0	0.04	25.64	0.16	44.01	2.05	12.76	15.04	0.01	0.31	0.08	0.16				100.25	
T1-B	-32+60HIL	4742	2	703	CR	0.08	1.35	12.17	0.34	54.2	4.38	12.6	14.44	0.01	0.26	0.16	0.02				100.02	
T1-B	-32+60HIL	4742	2	704	CR	0	0.01	20.25	0.22	48.83	2.66	13.67	13.81	0.01	0.26	0.07	0.19				99.98	
T1-B	-32+60HIL	4742	2	707	CR	0.01	0.04	12	0.3	57.4	3.01	13.78	12.87	0	0.29	0.08	0.09				99.86	
T1-B	-32+60HIL	4742	2	802	CR	0	0.04	11.36	0.18	57.08	2.61	17.29	10.39	0	0.42	0.07	0.14				99.59	
T1-B	-32+60HIL	4742	2	803	CR	0.07	0.08	9.25	0.31	60.4	2.82	13.33	12.83	0	0.3	0.08	0.12				99.58	
T1-B	-32+60HIL	4742	2	804	CR	0	0.15	17.82	0.22	50.65	2.03	16.67	11.52	0	0.48	0.05	0.14				99.71	
T1-B	-32+60HIL	4742	2	805	CR	0.01	0.06	28.72	0.17	37.96	2.66	16.2	12.84	0.01	0.38	0.09	0.21				99.3	
T1-B	-32+60HIL	4742	2	807	CR	0	0.17	26.86	0.16	39.45	4.66	13.56	14.67	0	0.26	0.13	0.16				100.08	
T1-B	-32+60HIL	4742	3	101	CR	0	0.36	23.62	0.22	46.02	1.44	12.43	15.18	0	0.22	0.08	0.28				99.83	
T1-B	-32+60HIL	4742	3	102	CR	0	0.19	18.88	0.19	51.17	2.13	12.21	14.73	0.01	0.32	0.08	0.12				100.03	
T1-B	-32+60HIL	4742	3	103	CR	0.07	0.68	10.56	0.22	58.08	3.55	12.71	13.88	0	0.27	0.11	0.07				100.19	
T1-B	-32+60HIL	4742	3	108	CR	0.13	0.33	7.24	0.22	61.91	3.41	12.85	13.09	0.01	0.31	0.08	0.01				99.58	
T1-B	-32+60HIL	4742	3	109	CR	0.03	0.01	14.82	0.18	55.48	1.78	11.72	14.3	0	0.27	0.08	0.09				98.76	
T1-B	-32+60HIL	4742	3	110	CR	0.03	0.23	22.74	0.19	45.38	1.79	15.97	12.53	0	0.4	0.11	0.09				99.47	
T1-B	-32+60HIL	4742	3	111	CR	0.01	0.2	10.92	0.2	59.48	2.74	11.04	14.65	0	0.25	0.1	0.06				99.65	
T1-B	-32+60HIL	4742	3	201	CR	0.11	0.18	7.38	0.2	62.53	3.19	12	13.61	0	0.26	0.07	0.05				99.59	
T1-B	-32+60HIL	4742	3	202	CR	0.04	0.26	17.44	0.23	52.06	2.41	12.67	14.32	0.02	0.26	0.08	0.02				99.8	
T1-B	-32+60HIL	4742	3	204	CR	0	0.06	15.11	0.2	54.38	2.12	15.03	12.35	0	0.38	0.06	0.11				99.79	
T1-B	-32+60HIL	4742	3	208	CR	0.01	0.52	13.77	0.37	54.37	2.72	15.86	11.93	0.01	0.42	0.09	0.15				100.22	
T1-B	-32+60HIL	4742	3	301	CR	0.05	0.07	9.03	0.31	58.93	3.47	16.43	10.68	0	0.45	0.06	0.1				99.56	
T1-B	-32+60HIL	4742	3	302	CR	0.04	0.25	8.71	0.28	60.55	3.46	13.35	12.97	0	0.31	0.06	0.07				100.05	
T1-B	-32+60HIL	4742	3	401	CR	0	0.08	19.66	0.27	47.72	3.43	15.81	12.36	0	0.25	0.09	0.15				99.81	
T1-B	-32+60HIL	4742	3	402	CR	0.03	0.09	16.51	0.22	52.23	3.11	14.45	12.93	0	0.38	0.07	0.13				100.15	
T1-B	-32+60HIL	4742	3	405	CR	0.02	0.05	11.7	0.27	56.48	3.16	16.98	10.68	0	0.43	0.04	0.24				100.03	
T1-B	-32+60HIL	4742	3	406	CR	0	0.38	7.93	0.22	59.3	3.93	17.01	10.47	0	0.38	0.04	0.24				99.89	
T1-B	-32+60HIL	4742	3	504	CR	0.01	0.18	24.19	0.19	44.67	2.51	13.11	14.71	0	0.28	0.11	0.1				100.05	
T1-B	-32+60HIL	4742	3	505	CR	0.01	0.08	16.11	0.23	52.67	3.24	13.7	13.37	0	0.33	0.08	0.12				99.92	
T1-B	-32+60HIL	4742	3	506	CR	0	0.01	21.55	0.21	47.26	2.98	13.37	14.19	0	0.23	0.12	0.18				100.09	
T1-B	-32+60HIL	4742	3	508	CR	0.05	0.2	17.96	0.22	51.8	2.1	13.99	13.53	0	0.35	0.07	0.11				100.37	
T1-B	-32+60HIL	4742	3	509	CR	0.03	0.06	12.22	0.18	56.74	1.92	17.75	10.15	0.01	0.56	0.07	0.03				99.7	
T1-B	-32+60HIL	4742	3	601	CR	0.13	0.05	8.06	0.24	61.75	3.48	11.39	13.92	0.01	0.3	0.1	0.08				99.49	
T1-B	-32+60HIL	4742	3	606	CR	0.01	0.19	10.67	0.21	59.12	2.81	12.71	13.51	0	0.27	0.1	0				99.6	
T1-B	-32+60HIL	4742	3	608	CR	0.14	0.1	7.92	0.26	61.68	3.15	12.66	13.15	0.01	0.24	0.12	0.03				99.44	
T1-B	-32+60HIL	4742	3	701	CR	0	0.32	22.58	0.2	46.86	1.74	13.28	14.52	0	0.26	0.08	0.26				100.09	
T1-B	-32+60HIL	4742	3	707	CR	0.06	0.35	8.21	0.28	60.67	3.54	13.49	12.86	0.01	0.26	0.07	0.09				99.87	
T1-B	-32+60HIL	4742	3	710	CR	0.05	0.23	8.68	0.23	60.68	3.34	13.41	12.95	0.01	0.24	0.1	0.12				100.05	
T1-B	-32+60HIL	4742	3	711	CR	0.01	0.19	28.56	0.16	41.01	0	15.07	13.61	0.02	0.27	0.11	0.13				99.13	

Name	Fraction	Mount	Cell	Grain	CFM	SiO2	TiO2	Al2O3	V2O3	Cr2O3	Fe2O3	FeO	MgO	CaO	MnO	NiO	ZnO	Nb2O5	Na2O	K2O	Total	Flag
T1-B	-32+60HIL	4742	3	801	CR	0.1	0.22	7.37	0.17	62.62	3.15	12.71	13.24	0	0.29	0.07	0.04				99.97	
T1-B	-32+60HIL	4742	3	802	CR	0.06	0.2	9.9	0.22	58.68	3.19	15.96	11.28	0	0.44	0.09	0.12				100.13	
T1-B	-32+60HIL	4742	3	808	CR	0	0.01	32.32	0.13	36.81	2.41	11.19	16.76	0	0.2	0.13	0.17				100.12	
T1-B	-32+60HIL	4742	3	810	CR	0	0.03	13.1	0.29	55.12	2.78	16.29	11.13	0.01	0.46	0.08	0.15				99.45	
T1-B	-32+60HIL	4742	4	106	CR	0.06	0.28	10.18	0.26	57.07	4.47	15.65	11.58	0.01	0.37	0.11	0.07				100.1	
T1-B	-32+60HIL	4742	4	109	CR	0.05	0.06	9.88	0.32	59	3.19	14.64	12.02	0	0.33	0.07	0.02				99.57	
T1-B	-32+60HIL	4742	4	110	CR	0.14	0.28	7.16	0.23	61.17	3.54	14.35	11.94	0.01	0.41	0.08	0.09				99.39	
T1-B	-32+60HIL	4742	4	201	CR	0	0.03	24.25	0.24	45	2.63	12.81	14.89	0.01	0.24	0.1	0.16				100.36	
T1-B	-32+60HIL	4742	4	202	CR	0	0.1	20.3	0.27	46.95	3.41	15.87	12.36	0	0.31	0.08	0.1				99.75	
T1-B	-32+60HIL	4742	4	203	CR	0.01	0.13	10.4	0.33	58.58	3.39	14.29	12.44	0.01	0.31	0.1	0.09				100.07	
T1-B	-32+60HIL	4742	4	208	CR	0	0.02	29.35	0.18	39.14	1.81	14.45	14.16	0	0.34	0.07	0.22				99.73	
T1-B	-32+60HIL	4742	4	210	CR	0.01	0.01	15.83	0.24	53.08	2.44	16.93	11.21	0.01	0.45	0.07	0.1				100.38	
T1-B	-32+60HIL	4742	4	302	CR	0	0.23	8.8	0.28	59.47	4.31	13.74	12.71	0	0.25	0.09	0.09				99.97	
T1-B	-32+60HIL	4742	4	305	CR	0.03	0.17	10.8	0.2	59.02	2.91	11.49	14.27	0	0.2	0.08	0.06				99.23	
T1-B	-32+60HIL	4742	4	306	CR	0.15	0.74	15.23	0.31	51.94	5.02	10.84	15.6	0.01	0.23	0.13	0.07				100.27	
T1-B	-32+60HIL	4742	4	308	CR	0.03	0.05	9.74	0.2	58.71	2.99	16.82	10.62	0	0.29	0.03	0.28				99.75	
T1-B	-32+60HIL	4742	4	401	CR	0	0.07	8.66	0.18	58.99	3.8	16.91	10.35	0	0.45	0.04	0.15				99.61	
T1-B	-32+60HIL	4742	4	402	CR	0.06	0.05	8.91	0.28	60.54	3.32	13.5	12.74	0.01	0.27	0.09	0.12				99.89	
T1-B	-32+60HIL	4742	4	409	CR	0.14	0.08	8.19	0.23	62.3	3.08	11.49	14.04	0	0.22	0.08	0.07				99.92	
T1-B	-32+60HIL	4742	4	411	CR	0	0.1	22.82	0.2	45.22	3.74	13.47	14.33	0	0.3	0.1	0.06				100.34	
T1-B	-32+60HIL	4742	4	501	CR	0.01	0.02	18.78	0.22	52.21	1.37	12.06	14.71	0.01	0.29	0.04	0.09				99.81	
T1-B	-32+60HIL	4742	4	507	CR	0	0.1	13.87	0.23	54.87	2.61	17.01	10.98	0	0.47	0.04	0.16				100.34	
T1-B	-32+60HIL	4742	4	509	CR	0.01	1.47	20.01	0.27	42.24	6.54	15.3	13.45	0.04	0.37	0.1	0.01				99.8	
T1-B	-32+60HIL	4742	4	510	CR	0.13	0.06	8.11	0.24	61.87	3.61	11.23	14.16	0.01	0.21	0.09	0.06				99.77	
T1-B	-32+60HIL	4742	4	512	CR	0.12	0.77	14.28	0.23	52.71	4.81	12.57	14.42	0.01	0.26	0.13	0.08				100.4	
T1-B	-32+60HIL	4742	4	603	CR	0.07	0.06	9.37	0.27	59.88	2.69	15.42	11.43	0.01	0.43	0.08	0.11				99.84	
T1-B	-32+60HIL	4742	4	610	CR	0	0.03	15.8	0.18	55.6	1.65	12.34	14.35	0.01	0.28	0.06	0.12				100.41	
T1-B	-32+60HIL	4742	4	611	CR	0	0.16	24.07	0.21	41.71	4.3	16.52	12.33	0	0.4	0.09	0.23				100.03	
T1-B	-32+60HIL	4742	4	706	CR	0	0.06	30.75	0.21	38.7	1.55	11.82	16.12	0.01	0.21	0.08	0.19				99.68	
T1-B	-32+60HIL	4742	4	707	CR	0	0.05	11.85	0.19	56.79	2.89	16.59	11.02	0.01	0.35	0.07	0.17				99.97	
T1-B	-32+60HIL	4742	4	709	CR	0	0.14	38	0.13	31.05	1.61	10.9	17.58	0.01	0.19	0.12	0.23				99.96	
T1-B	-32+60HIL	4742	4	710	CR	0.02	0.06	13.8	0.26	56.2	2.26	13.28	13.39	0.01	0.27	0.09	0.12				99.75	
T1-B	-32+60HIL	4742	5	102	CR	0	0.05	14.3	0.27	54.66	1.82	17.96	10.27	0	0.54	0.07	0.16				100.09	
T1-B	-32+60HIL	4742	5	103	CR	0	0.03	22.11	0.18	47.64	2.6	12.27	15.05	0	0.23	0.08	0.16				100.35	
T1-B	-32+60HIL	4742	5	105	CR	0.15	0.33	16.57	0.25	51.34	4.52	11.47	15.08	0	0.22	0.15	0.05				100.11	
T1-B	-32+60HIL	4742	5	106	CR	0.01	0.13	13.64	0.27	56.19	1.8	15.61	11.9	0	0.39	0.05	0.17				100.17	
T1-B	-32+60HIL	4742	5	111	CR	0.03	0.19	10.78	0.19	59.13	2.43	13.4	13.08	0	0.27	0.08	0.05				99.63	
T1-B	-32+60HIL	4742	5	202	CR	0	0.16	11.75	0.23	57.91	1.72	15.04	11.95	0.01	0.36	0.01	0.26				99.4	
T1-B	-32+60HIL	4742	5	207	CR	0.01	0.16	20.89	0.21	47.87	1.46	15.99	12.26	0	0.43	0.05	0.15				99.47	
T1-B	-32+60HIL	4742	5	211	CR	0.11	0.43	7.8	0.19	61.77	2.86	13.79	12.67	0.02	0.4	0.07	0.04				100.13	
T1-B	-32+60HIL	4742	5	212	CR	0	0.01	30.18	0.17	37.64	2.44	14.59	14.13	0.01	0.41	0.1	0.2				99.86	
T1-B	-32+60HIL	4742	5	301	CR	0.12	0.06	8.21	0.26	62.07	3.34	11.53	14.02	0.01	0.21	0.1	0.04				99.95	

Name	Fraction	Mount	Cell	Grain	CFM	SiO2	TiO2	Al2O3	V2O3	Cr2O3	Fe2O3	FeO	MgO	CaO	MnO	NiO	ZnO	Nb2O5	Na2O	K2O	Total	Flag
T1-B	-32+60HIL	4742	5	304	CR	0	0.19	23.93	0.2	44.75	2.7	12.45	15.08	0	0.25	0.11	0.2				99.85	
T1-B	-32+60HIL	4742	5	309	CR	0.03	0.06	10.94	0.26	57.59	3	16.58	10.87	0.01	0.42	0.07	0.09				99.92	
T1-B	-32+60HIL	4742	5	310	CR	0	0.35	20.28	0.19	40.9	8.66	19.2	10.45	0.01	0.32	0.16	0.22				100.72	
T1-B	-32+60HIL	4742	5	311	CR	0.06	0.09	9.61	0.21	60.51	2.79	12.18	13.65	0.01	0.28	0.07	0.08				99.51	
T1-B	-32+60HIL	4742	5	312	CR	0	0.03	21.98	0.18	48.56	1.8	11.35	15.53	0.03	0.27	0.07	0.14				99.94	
T1-B	-32+60HIL	4742	5	401	CR	0.02	0.02	15.2	0.26	54.1	1.41	17.27	10.77	0.01	0.48	0.06	0.09				99.7	
T1-B	-32+60HIL	4742	5	404	CR	0.01	0.08	26.01	0.21	41.97	3.23	13.7	14.44	0.01	0.32	0.09	0.16				100.23	
T1-B	-32+60HIL	4742	5	405	CR	0	0.05	25.95	0.22	42.25	2.67	12.98	14.76	0.01	0.27	0.08	0.14				99.37	
T1-B	-32+60HIL	4742	5	407	CR	0.06	0.19	9.2	0.25	59.41	4.02	13.87	12.63	0.02	0.33	0.08	0.11				100.16	
T1-B	-32+60HIL	4742	5	409	CR	0	0.04	25.05	0.14	43.9	2.26	13.4	14.46	0	0.31	0.06	0.19				99.8	
T1-B	-32+60HIL	4742	5	410	CR	0.04	0.91	9.14	0.27	56.05	4.23	19.26	9.28	0	0.67	0.12	0.1				100.06	
T1-B	-32+60HIL	4742	5	501	CR	0.02	0	9.61	0.24	58.71	3.63	14.77	11.81	0	0.35	0.07	0.08				99.3	
T1-B	-32+60HIL	4742	5	502	CR	0	0.36	23.55	0.19	45.99	0.77	13.8	14.21	0.01	0.2	0.07	0.27				99.44	
T1-B	-32+60HIL	4742	5	505	CR	0.08	0.15	8.08	0.26	60.91	3.49	13.29	12.77	0	0.27	0.09	0.08				99.48	
T1-B	-32+60HIL	4742	5	507	CR	0.13	0.14	7.66	0.23	62.53	3.27	12.8	13.2	0	0.34	0.1	0.08				100.48	
T1-B	-32+60HIL	4742	5	602	CR	0	0.09	27.28	0.16	39.73	3.66	13.29	14.75	0	0.22	0.1	0.27				99.54	
T1-B	-32+60HIL	4742	5	603	CR	0	0.55	16.51	0.23	52.35	1.68	15.21	12.65	0.01	0.37	0.06	0.18				99.78	
T1-B	-32+60HPY	4740	1	313	CR	0.08	3.6	7.13	0.38	57.95	0	16.96	11.94	0.01	0.26	0.21	0.06				98.56	
T1-B	-32+60HPY	4740	1	407	CR	0.07	4.13	14.31	0.31	43.91	7.6	14.84	14.88	0.01	0.33	0.14	0.14				100.66	
T1-B	-32+60HPY	4740	1	602	CR	0.09	0.94	9.25	0.28	58.18	4.02	13.15	13.51	0	0.29	0.08	0.08				99.85	
T1-B	-32+60HPY	4740	1	701	CR	0.13	3.27	10.51	0.42	53.35	1.67	16.31	12.73	0.01	0.25	0.23	0.14				99.02	
T1-B	-32+60HPY	4740	2	107	CR	0.1	3.22	10.55	0.39	53.66	1.67	16.6	12.61	0.03	0.27	0.17	0.08				99.35	
T1-B	-32+60HPY	4740	2	304	CR	0.12	3.83	5.88	0.34	57.29	3.44	15.49	13.39	0.01	0.32	0.14	0.11				100.36	
T1-B	-32+60HPY	4740	2	313	CR	0.16	1.39	8.05	0.31	59.54	3.87	11.88	14.55	0	0.24	0.1	0.04				100.12	
T1-B	-32+60HPY	4740	2	401	CR	0.11	3.22	10.46	0.4	52.66	4.36	14.22	14.32	0.01	0.28	0.19	0.05				100.27	
T1-B	-32+60HPY	4740	2	404	CR	0.11	1.86	12.44	0.32	54	4.26	10.92	15.95	0.01	0.2	0.15	0.03				100.24	
T1-B	-32+60HPY	4740	2	407	CR	0.08	0.62	6.99	0.26	62.42	3.25	12.77	13.44	0	0.28	0.1	0.04				100.24	
T1-B	-32+60HPY	4740	2	416	CR	0.08	1.94	10.27	0.3	54.65	4.77	14.78	13.27	0.01	0.27	0.13	0.08				100.55	
T1-B	-32+60HPY	4740	2	603	CR	0.16	1.42	7.94	0.33	60.19	3.5	11.74	14.72	0	0.2	0.13	0.04				100.37	
T1-B	-32+60HPY	4740	2	609	CR	0.14	5	9.98	0.4	46.43	7.08	17.32	13.24	0	0.23	0.22	0.08				100.13	
T1-B	-32+60HPY	4740	2	612	CR	0.09	2.28	7.26	0.32	58.09	3.84	14.74	13.09	0.01	0.32	0.17	0.06				100.27	
T1-B	-32+60HPY	4740	2	703	CR	0.13	2.37	5.6	0.31	59.9	3.89	13.86	13.55	0	0.25	0.12	0.04				100.01	
T1-B	-32+60HPY	4740	2	710	CR	0.14	3.42	11.95	0.35	50.92	4.55	13.71	14.96	0.02	0.31	0.17	0.04				100.51	
T1-B	-32+60HPY	4740	2	802	CR	0.17	5.01	10.19	0.39	46.74	7.16	16.93	13.61	0	0.31	0.19	0				100.7	
T1-B	-32+60HPY	4740	2	809	CR	0.12	3	18.85	0.27	44.8	0.42	17.63	12.4	0.01	0.3	0.12	0.07				97.98	#
T1-B	-32+60HPY	4740	3	102	CR	0.13	1.38	8.07	0.28	59.64	3.4	12.19	14.3	0.01	0.21	0.17	0.07				99.83	
T1-B	-32+60HPY	4740	3	404	CR	0.08	1.88	10.54	0.38	53.31	4.38	18.02	10.88	0	0.56	0.18	0.12				100.31	
T1-B	-32+60HPY	4740	3	408	CR	0.1	3.29	10.8	0.39	54.13	0	17.19	10.97	0.01	0.19	0.19	0.05				97.31	#
T1-B	-32+60HPY	4740	3	410	CR	0.1	3.71	6.32	0.34	56.83	4.06	13.95	14.36	0	0.28	0.15	0.06				100.16	
T1-B	-32+60HPY	4740	3	502	CR	0.14	2.27	14.8	0.45	50.31	4.27	11.92	15.75	0.01	0.22	0.19	0.09				100.41	
T1-B	-32+60HPY	4740	3	507	CR	0.11	2.2	14.66	0.42	49.97	4.36	12.41	15.27	0.01	0.26	0.19	0.13				99.99	
T1-B	-32+60HPY	4740	3	701	CR	0.11	0.91	9.28	0.29	58.33	4.36	12.41	14.07	0.01	0.21	0.12	0.03				100.14	

Name	Fraction	Mount	Cell	Grain	CFM	SiO2	TiO2	Al2O3	V2O3	Cr2O3	Fe2O3	FeO	MgO	CaO	MnO	NiO	ZnO	Nb2O5	Na2O	K2O	Total	Flag
T1-B	-32+60HPY	4740	4	102	CR	0.14	1.39	7.88	0.32	59.58	3.67	11.57	14.62	0	0.24	0.1	0.05				99.54	
T1-B	-32+60HPY	4740	4	114	CR	0.06	1.51	8.75	0.19	56.99	3.97	16.72	11.45	0.01	0.47	0.1	0.09				100.31	
T1-B	-32+60HPY	4740	4	308	CR	0.12	1.22	10.59	0.29	57.16	4.27	11.06	15.33	0	0.22	0.13	0.04				100.42	
T1-B	-32+60HPY	4740	4	403	CR	0.16	3.73	4.09	0.33	60.15	3.52	13.59	14.43	0.03	0.28	0.18	0.09				100.57	
T1-B	-32+60HPY	4740	4	605	CR	0.1	2.25	7.22	0.29	56.77	5.11	14.89	12.94	0.01	0.33	0.16	0.1				100.16	
T1-B	-32+60HPY	4740	4	606	CR	0.09	3.19	10.6	0.41	52.93	4.28	14.09	14.47	0	0.26	0.14	0.1				100.57	
T1-B	-32+60HPY	4740	4	610	CR	0.12	2.5	6.26	0.27	59.99	3.15	13.81	13.81	0	0.26	0.13	0.06				100.36	
T1-B	-32+60HPY	4740	4	611	CR	0.15	2.3	9.66	0.33	54.67	5.01	14.15	13.76	0.01	0.37	0.13	0.03				100.56	
T1-B	-32+60HPY	4740	4	714	CR	0.09	2.18	15.05	0.42	50.11	4.36	12.07	15.62	0.01	0.26	0.15	0.08				100.4	
T1-B	-32+60HPY	4740	5	109	CR	0.1	3.28	5.54	0.3	58.66	3.59	15.39	13.12	0.01	0.37	0.18	0.1				100.65	
T1-B	-32+60HPY	4740	5	510	CR	0.17	4.16	6.51	0.32	56.27	3.97	13.12	15.19	0.01	0.26	0.23	0.01				100.22	
T1-B	-32+60HPY	4740	5	516	CR	0.07	1.81	9.25	0.3	55.15	4.57	17.36	11.25	0.01	0.48	0.09	0.1				100.44	
T1-B	-16+32HPY	4741	1	109	CR	0.06	2.87	15.77	0.29	45.16	6.83	14.22	14.64	0.03	0.38	0.12	0.01				100.37	
T1-B	-16+32HPY	4741	1	203	CR	0.08	1.26	9	0.23	59.55	1.75	12.99	13.63	0	0.26	0.11	0.1				98.95	
T1-B	-16+32HPY	4741	2	101	CR	0.15	2.24	7.31	0.3	57.24	5.39	13.36	14.06	0.02	0.24	0.19	0.07				100.55	
T1-B	-16+32HPY	4741	2	105	CR	0.12	2.85	12.2	0.35	51.95	4.11	13.85	14.59	0.01	0.27	0.16	0.08				100.53	
T1-B	-16+32HPY	4741	2	401	CR	0.11	0.79	8.06	0.22	60.63	3.27	12.96	13.46	0.01	0.28	0.1	0.04				99.94	
T1-B	-16+32HPY	4741	2	408	CR	0.11	2.49	6.25	0.28	59.8	3.47	13.04	14.25	0	0.26	0.13	0.08				100.17	
T1-B	-16+32HIL	4741	3	207	CR	0.1	3.16	6.42	0.29	55.77	3.51	19.63	10.04	0	0.6	0.14	0.1				99.75	
T1-B	-16+32HIL	4741	3	309	CR	0.1	1.86	10.55	0.42	53.82	4.62	16.88	11.72	0	0.52	0.17	0				100.64	
T1-B	-16+32HIL	4741	3	402	CR	0.1	4.05	6.41	0.36	54.74	4.54	15.98	13.17	0.01	0.27	0.17	0.1				99.89	
T1-B	-16+32HIL	4741	4	101	CR	0.1	3.88	9.1	0.37	54	3.87	13.29	15.22	0.01	0.23	0.18	0.06				100.3	
T1-B	-16+32HIL	4741	4	205	CR	0.05	1.33	9.68	0.29	55.91	4.42	15.96	11.94	0	0.39	0.15	0.1				100.21	
T1-B	-16+32HIL	4741	4	303	CR	0.14	1.22	10.65	0.3	57.38	4	11.54	15.04	0	0.27	0.13	0.09				100.75	
T1-B	-32+60HIL	4742	1	110	CR	0.12	3.05	5.61	0.3	57.92	3.93	15.86	12.55	0.01	0.36	0.15	0.08				99.93	
T1-B	-32+60HIL	4742	1	201	CR	0.13	3.84	5.83	0.35	56.94	3.44	14.3	13.97	0.02	0.29	0.14	0.09				99.33	
T1-B	-32+60HIL	4742	1	308	CR	0.11	1.22	8.87	0.23	59.2	3.05	12.81	13.89	0	0.24	0.1	0.09				99.8	
T1-B	-32+60HIL	4742	1	310	CR	0.1	2.99	6.27	0.28	56.51	3.51	20.26	9.7	0.01	0.54	0.12	0.09				100.38	
T1-B	-32+60HIL	4742	1	312	CR	0.11	3.27	10.95	0.4	53.69	0	17.29	12.01	0.01	0.21	0.16	0.13				98.22	#
T1-B	-32+60HIL	4742	1	407	CR	0.11	3.75	6.26	0.33	57.38	2.33	15.77	13.03	0.03	0.33	0.18	0.08				99.56	
T1-B	-32+60HIL	4742	1	509	CR	0.09	3.13	6.34	0.32	54.8	3.9	21.25	8.87	0.01	0.69	0.12	0.19				99.71	
T1-B	-32+60HIL	4742	1	601	CR	0.13	2.86	12.8	0.41	50.24	4.19	14.36	14.1	0.01	0.3	0.19	0.03				99.61	
T1-B	-32+60HIL	4742	1	711	CR	0.13	3.2	11.03	0.4	50.1	5.74	15.77	13.24	0.01	0.42	0.15	0.1				100.29	
T1-B	-32+60HIL	4742	1	712	CR	0.11	2.44	6.18	0.28	59	3.19	17.31	11.41	0	0.43	0.13	0.07				100.56	
T1-B	-32+60HIL	4742	2	103	CR	0.06	2.41	12.03	0.42	50.4	3.87	20.06	9.9	0.01	0.65	0.14	0.09				100.04	
T1-B	-32+60HIL	4742	2	205	CR	0.07	1.18	7.89	0.22	58.41	3.37	17.35	10.59	0.01	0.57	0.1	0.07				99.82	
T1-B	-32+60HIL	4742	2	209	CR	0.13	1.29	6.31	0.26	61.22	3.67	12.97	13.51	0	0.29	0.11	0.03				99.78	
T1-B	-32+60HIL	4742	2	702	CR	0.08	2.21	6.93	0.34	56.77	4.08	18.46	10.43	0.02	0.48	0.09	0.06				99.94	
T1-B	-32+60HIL	4742	2	705	CR	0	4.52	13.81	0.34	43.4	6.56	18.47	12.6	0.03	0.39	0.14	0.14				100.4	
T1-B	-32+60HIL	4742	3	105	CR	0.09	3.82	6.63	0.39	54.16	4.06	19.57	10.59	0	0.51	0.17	0.05				100.05	
T1-B	-32+60HIL	4742	3	106	CR	0.12	2.23	14.65	0.41	50.14	4.2	13.2	14.85	0.02	0.27	0.18	0.07				100.34	
T1-B	-32+60HIL	4742	3	107	CR	0.15	3.58	10.82	0.34	47.28	8.05	15.11	13.83	0.04	0.28	0.12	0.05				99.65	

Name	Fraction	Mount	Cell	Grain	CFM	SiO2	TiO2	Al2O3	V2O3	Cr2O3	Fe2O3	FeO	MgO	CaO	MnO	NiO	ZnO	Nb2O5	Na2O	K2O	Total	Flag
T1-B	-32+60HIL	4742	3	203	CR	0.08	3.42	10.18	0.46	50.37	3.76	21.08	9.61	0.01	0.6	0.19	0.14				99.9	
T1-B	-32+60HIL	4742	3	303	CR	0.06	1.46	8.83	0.32	57.13	3.73	16.39	11.59	0	0.47	0.09	0.1				100.17	
T1-B	-32+60HIL	4742	3	305	CR	0.05	2.91	9.87	0.33	51.73	6.06	14.96	13.54	0.02	0.27	0.11	0.12				99.96	
T1-B	-32+60HIL	4742	3	404	CR	0.1	0.9	7.54	0.25	61.3	3.06	12.38	13.81	0	0.28	0.09	0.07				99.78	
T1-B	-32+60HIL	4742	3	502	CR	0.12	1.58	6.42	0.17	57.72	5.55	16.82	11.17	0	0.41	0.12	0.1				100.17	
T1-B	-32+60HIL	4742	3	702	CR	0.07	0.77	8.14	0.35	59.82	3.24	15.01	12.04	0.01	0.39	0.05	0.1				99.97	
T1-B	-32+60HIL	4742	3	803	CR	0.13	3.37	10.38	0.35	49.58	5.28	20.17	10.34	0.05	0.58	0.11	0.07				100.4	
T1-B	-32+60HIL	4742	3	804	CR	0.11	2.24	7.28	0.32	56.86	5.23	13.91	13.58	0	0.27	0.16	0.07				100.02	
T1-B	-32+60HIL	4742	4	204	CR	0.11	1.53	7.78	0.27	58.03	3.98	15.96	11.83	0.02	0.4	0.11	0.1				100.12	
T1-B	-32+60HIL	4742	4	602	CR	0.14	1.35	8.05	0.33	59.27	4.11	11.18	14.93	0.01	0.17	0.11	0.06				99.7	
T1-B	-32+60HIL	4742	4	607	CR	0.11	3.46	9.1	0.35	54.25	3.53	15.24	13.61	0.01	0.35	0.18	0.07				100.24	
T1-B	-32+60HIL	4742	4	609	CR	0.13	0.77	6.95	0.23	61.9	3.16	12.61	13.51	0	0.27	0.09	0.04				99.65	
T1-B	-32+60HIL	4742	5	104	CR	0.08	3.29	16.95	0.25	42.09	4.68	17.31	12.46	0.02	0.34	0.13	0.02				97.62	#
T1-B	-32+60HIL	4742	5	204	CR	0	2.14	9.98	0.49	51.48	5.72	17.66	11.07	0.02	0.39	0.07	0.08				99.11	
T1-B	-32+60HIL	4742	5	303	CR	0.12	2.25	5.22	0.3	57.17	4.3	20.74	8.56	0.02	0.67	0.1	0.05				99.51	
T1-B	-32+60HIL	4742	5	305	CR	0.07	2.24	7.05	0.36	57.49	3.83	16.44	11.81	0.01	0.39	0.11	0				99.78	
T1-B	-32+60HIL	4742	5	411	CR	0.12	2.81	5.42	0.29	58.25	3.43	18.92	10.39	0.02	0.52	0.16	0.12				100.43	
T1-B	-32+60HIL	4742	5	504	CR	0.11	5.03	10.18	0.39	46.49	7.21	17.25	13.41	0	0.28	0.28	0.07				100.68	
T1-B	-32+60HIL	4742	5	508	CR	0.08	3.43	9.13	0.39	54.55	3.7	14.45	14.21	0	0.27	0.19	0.04				100.44	
T1-B	-32+60HPY	4740	1	606	CR	0.07	3.82	23.89	0.23	33.14	8.96	13.44	16.6	0.07	0.36	0.1	0.1				100.77	
T1-B	-32+60HPY	4740	2	315	CR	0.03	0.29	24.22	0.18	44.36	2.9	12.39	15.25	0.08	0.29	0.08	0.14				100.2	
T1-B	-32+60HIL	4742	4	311	CR	0.02	0.06	21.58	0.27	46.9	3.14	13.33	14.21	0.1	0.25	0.06	0.15				100.06	
T1-B	-32+60HPY	4740	2	103	CR	0.07	3.07	12.79	0.28	47.05	7.78	14.92	14.02	0.07	0.36	0.14	0.05				100.61	
T1-B	-32+60HPY	4740	2	110	CR	0.51	0.23	17.47	0.2	45.73	8.98	11.69	14.81	0.01	0.29	0.16	0.03				100.1	
T1-B	-32+60HPY	4740	2	211	CR	0.27	0.06	5.69	0.16	62.06	5.16	13.22	12.5	0.01	0.27	0.11	0.04				99.56	
T1-B	-32+60HPY	4740	2	414	CR	0.26	0.24	13.18	0.15	55.47	4.77	10.41	15.4	0.01	0.23	0.16	0.05				100.32	
T1-B	-32+60HPY	4740	2	507	CR	0.45	0.43	9.65	0.16	49.85	13.07	13.47	13.06	0	0.26	0.21	0.06				100.67	
T1-B	-32+60HPY	4740	3	107	CR	0.45	0.27	10.7	0.14	53.28	9.44	10.27	15.12	0.01	0.25	0.22	0.05				100.19	
T1-B	-32+60HPY	4740	3	110	CR	0.26	0.25	10.05	0.21	58.76	4.89	9.87	15.38	0	0.22	0.16	0.02				100.04	
T1-B	-32+60HPY	4740	3	303	CR	0.24	0.28	10.18	0.2	59.17	4.92	10.1	15.43	0	0.26	0.14	0.03				100.95	
T1-B	-32+60HPY	4740	3	308	CR	0.26	0.08	8.9	0.18	59.09	5.6	11.37	14.16	0.01	0.25	0.1	0.04				100.05	
T1-B	-32+60HPY	4740	3	403	CR	0.35	0.79	8.49	0.16	50.68	13.07	12.97	13.46	0.01	0.27	0.27	0.09				100.61	
T1-B	-32+60HPY	4740	3	511	CR	0.26	0.28	10.06	0.2	59.15	4.59	10.17	15.27	0.01	0.23	0.13	0.02				100.37	
T1-B	-32+60HPY	4740	3	709	CR	0.25	0.3	10.24	0.19	58.6	5.15	9.91	15.5	0	0.22	0.11	0.06				100.52	
T1-B	-32+60HPY	4740	4	107	CR	0.22	0.3	10.09	0.2	59.11	4.51	11.04	14.78	0	0.23	0.09	0.06				100.62	
T1-B	-32+60HPY	4740	4	111	CR	0.22	0.26	10.04	0.19	59.16	4.67	10.39	15.16	0.01	0.2	0.14	0.06				100.5	
T1-B	-32+60HPY	4740	4	304	CR	0.19	0.3	24.15	0.23	43.62	5.16	9.01	17.56	0	0.19	0.16	0.11				100.67	
T1-B	-32+60HPY	4740	4	402	CR	0.25	0.3	9.96	0.18	58.61	4.66	10.34	15.03	0.01	0.22	0.15	0.1				99.8	
T1-B	-32+60HPY	4740	4	509	CR	0.26	0.26	10.12	0.19	58.62	4.61	10.57	14.94	0.01	0.17	0.14	0				99.88	
T1-B	-32+60HPY	4740	4	701	CR	0.49	0.09	13.22	0.17	51.14	9	10.94	14.88	0	0.24	0.22	0				100.37	
T1-B	-32+60HPY	4740	4	709	CR	0.34	0.2	15.58	0.19	47.94	9.91	10.5	15.55	0.01	0.23	0.21	0.07				100.72	
T1-B	-32+60HPY	4740	4	711	CR	0.46	0.26	10.68	0.15	53.24	9.53	10.15	15.2	0	0.22	0.21	0.08				100.18	

Name	Fraction	Mount	Cell	Grain	CFM	SiO2	TiO2	Al2O3	V2O3	Cr2O3	Fe2O3	FeO	MgO	CaO	MnO	NiO	ZnO	Nb2O5	Na2O	K2O	Total	Flag
T1-B	-32+60HPY	4740	5	207	CR	0.3	0.2	14.17	0.27	54.27	4.71	10.4	15.43	0.01	0.21	0.16	0.04				100.16	
T1-B	-32+60HPY	4740	5	306	CR	0.31	0.22	11.58	0.23	50.33	10.78	13.2	13.31	0.01	0.26	0.14	0				100.37	
T1-B	-32+60HPY	4740	5	314	CR	0.19	1.38	20.31	0.3	45.71	4.98	11.09	16.46	0	0.22	0.2	0.09				100.93	
T1-B	-32+60HPY	4740	5	403	CR	0.19	1.38	20.35	0.28	45.83	5.13	10.35	16.97	0.01	0.19	0.2	0.06				100.92	
T1-B	-32+60HPY	4740	5	407	CR	0.37	0.61	10.73	0.2	49.62	12.11	13.18	13.54	0.01	0.25	0.29	0.05				100.95	
T1-B	-32+60HPY	4740	5	414	CR	0.25	0.27	10.12	0.19	59.14	4.8	10.13	15.38	0.01	0.2	0.15	0.01				100.65	
T1-B	-32+60HPY	4740	5	604	CR	0.44	0.43	9.52	0.18	49.97	13.13	13.37	13.12	0.01	0.26	0.19	0.01				100.62	
T1-B	-32+60HPY	4740	5	607	CR	0.45	0.26	10.74	0.13	53.25	9.34	11.03	14.68	0.01	0.23	0.21	0.04				100.36	
T1-B	-32+60HPY	4740	5	611	CR	0.48	0.3	13.37	0.15	46.14	13.4	11.96	14.35	0.02	0.25	0.25	0.04				100.72	
T1-B	-32+60HPY	4740	5	613	CR	0.35	0.47	8.93	0.12	52.3	11.13	14.01	12.66	0.01	0.31	0.24	0.02				100.55	
T1-B	-16+32HPY	4741	2	106	CR	1.62	4.1	18.22	0.26	35.31	10.48	12.55	16.11	0.1	0.34	0.16	0.03				99.28	
T1-B	-16+32HPY	4741	2	208	CR	0.46	0.43	9.6	0.16	50.14	12.86	13.49	13.04	0.01	0.28	0.21	0.06				100.73	
T1-B	-16+32HIL	4741	3	104	CR	0.45	0.34	8.51	0.19	54.32	9.71	13.38	12.91	0.02	0.27	0.16	0.02				100.28	
T1-B	-16+32HIL	4741	3	501	CR	0.52	0.08	10.48	0.18	53.62	9.19	11.37	14.23	0.01	0.27	0.21	0.05				100.2	
T1-B	-16+32HIL	4741	4	102	CR	0.48	0.17	11.94	0.21	51.11	10.49	11.31	14.6	0	0.25	0.16	0.03				100.74	
T1-B	-16+32HIL	4741	4	104	CR	0.48	0.26	10.73	0.12	53.67	9.5	10.15	15.3	0	0.25	0.21	0.05				100.73	
T1-B	-16+32HIL	4741	4	305	CR	0.33	0.81	8.49	0.17	50.85	12.87	13.05	13.44	0.01	0.25	0.28	0.08				100.62	
T1-B	-16+32HIL	4741	4	306	CR	0.28	0.09	12.12	0.14	54.25	7.64	10.34	15.26	0.02	0.25	0.16	0.01				100.55	
T1-B	-16+32HIL	4741	4	402	CR	0.34	0.29	16.45	0.23	38.64	17.29	14.03	13.38	0	0.26	0.24	0.01				101.15	#
T1-B	-16+32HIL	4741	4	404	CR	0.34	0.47	8.07	0.15	52.09	12.81	12.02	13.82	0	0.26	0.26	0				100.26	
T1-B	-16+32HIL	4741	4	405	CR	0.46	0.25	10.7	0.14	53.3	9.6	10.89	14.79	0.01	0.26	0.21	0.04				100.65	
T1-B	-16+32HIL	4741	4	503	CR	0.44	0.43	9.54	0.18	49.75	12.83	13.39	12.98	0.01	0.26	0.22	0.01				100.03	
T1-B	-16+32HIL	4741	4	504	CR	0.33	0.8	8.56	0.15	50.58	12.82	13.17	13.31	0	0.24	0.27	0.02				100.24	
T1-B	-16+32HIL	4741	4	505	CR	0.52	0.3	13.16	0.17	46.18	13.55	11.85	14.38	0.01	0.26	0.27	0				100.65	
T1-B	-32+60HIL	4742	1	405	CR	0.34	1.54	8.62	0.17	50.08	11.9	13.54	13.51	0.01	0.26	0.27	0.01				100.22	
T1-B	-32+60HIL	4742	1	606	CR	0.3	0.18	23.74	0.22	37.67	9.43	14.26	13.71	0	0.39	0.21	0.12				100.22	
T1-B	-32+60HIL	4742	1	610	CR	0.72	1.13	10.01	0.2	45.58	15.46	13.29	13.48	0.01	0.27	0.26	0.04				100.44	
T1-B	-32+60HIL	4742	1	701	CR	0.67	0.72	9.21	0.18	47.68	14.25	14.16	12.49	0	0.31	0.19	0				99.85	
T1-B	-32+60HIL	4742	2	104	CR	0.19	0.16	5.28	0.19	62.35	3.28	19.67	8.22	0	0.62	0.02	0.11				100.08	
T1-B	-32+60HIL	4742	2	604	CR	0.3	0.93	9.77	0.15	50.13	10.1	17.91	10.32	0.02	0.5	0.17	0.05				100.35	
T1-B	-32+60HIL	4742	2	701	CR	0.28	0.13	8.75	0.18	57.08	7.73	10.87	14.45	0.02	0.23	0.15	0.04				99.93	
T1-B	-32+60HIL	4742	2	808	CR	0.32	1.23	8.97	0.17	47.6	11.28	21.57	7.81	0	0.6	0.17	0.2				99.92	
T1-B	-32+60HIL	4742	2	809	CR	0.41	0.22	8.35	0.13	59.72	5.47	9.79	15.14	0	0.2	0.14	0.03				99.6	
T1-B	-32+60HIL	4742	3	604	CR	0.27	0.98	9.25	0.25	48.94	11.43	18.48	9.86	0.01	0.49	0.16	0.07				100.18	
T1-B	-32+60HIL	4742	3	605	CR	0.44	1.06	12.37	0.17	46.12	12.81	12.72	14.15	0	0.24	0.25	0.1				100.44	
T1-B	-32+60HIL	4742	3	805	CR	0.18	0.74	15.09	0.31	51.29	4.67	14.07	13.39	0	0.36	0.13	0.01				100.24	
T1-B	-32+60HIL	4742	4	304	CR	0.45	0.47	10.28	0.14	49.59	10.91	17.55	10.26	0	0.58	0.14	0.01				100.38	
T1-B	-32+60HIL	4742	4	407	CR	0.3	0.22	11.55	0.24	50.48	10.67	13.12	13.36	0.01	0.26	0.16	0.05				100.42	
T1-B	-32+60HIL	4742	4	606	CR	0.25	0.18	7.12	0.18	61.57	4.62	11.51	13.89	0	0.25	0.13	0.06				99.76	
T1-B	-32+60HIL	4742	5	205	CR	0.49	2.03	12.25	0.25	43.78	11.84	17.61	11.34	0.01	0.47	0.27	0.08				100.42	
T1-B	-32+60HIL	4742	5	208	CR	0.45	0.28	10.67	0.12	53.58	9.13	10.59	14.95	0	0.21	0.23	0.01				100.22	
T1-B	-32+60HIL	4742	5	306	CR	0.29	0.24	12.22	0.23	54.19	6.15	11.75	14.25	0.01	0.28	0.16	0.05				99.81	

Name	Fraction	Mount	Cell	Grain	CFM	SiO2	TiO2	Al2O3	V2O3	Cr2O3	Fe2O3	FeO	MgO	CaO	MnO	NiO	ZnO	Nb2O5	Na2O	K2O	Total	Flag
T1-B	-32+60HIL	4742	5	503	CR	0.44	0.26	10.66	0.13	52.96	9.34	11.53	14.26	0	0.25	0.21	0.01				100.05	
T1-B	-32+60HIL	4742	5	605	CR	0.23	0.29	10.05	0.19	58.43	4.8	10.58	14.9	0.01	0.26	0.13	0.05				99.91	
T1-B	-32+60HPY	4740	2	202	CR	0.19	3.87	8.99	0.37	55.84	0	15.32	13.32	0.01	0.18	0.21	0.12				98.41	#
T1-B	-32+60HPY	4740	2	509	CR	0.37	4.18	6.23	0.3	50.26	9.2	15.48	13.49	0	0.27	0.25	0.04				100.07	
T1-B	-32+60HPY	4740	2	602	CR	0.3	2.63	7.37	0.32	48.08	12.21	17.22	11.57	0	0.31	0.2	0				100.21	
T1-B	-32+60HPY	4740	2	608	CR	0.36	4.08	6.25	0.32	50.72	9.34	15.77	13.39	0.01	0.29	0.24	0				100.77	
T1-B	-32+60HPY	4740	3	105	CR	0.41	4.08	6.23	0.29	50.88	9.25	15.7	13.4	0	0.36	0.23	0.05				100.88	
T1-B	-32+60HPY	4740	3	109	CR	0.54	4.03	6.23	0.28	50.83	9.2	15.66	13.36	0.03	0.32	0.25	0.02				100.77	
T1-B	-32+60HPY	4740	3	112	CR	0.38	4.15	6.32	0.29	50.63	9.26	15.5	13.6	0	0.27	0.21	0				100.61	
T1-B	-32+60HPY	4740	3	113	CR	0.45	4.13	6.27	0.29	50.49	9.36	15.59	13.47	0.01	0.32	0.21	0.08				100.66	
T1-B	-32+60HPY	4740	3	211	CR	0.2	2.13	9.88	0.31	53.75	5.15	16	12.35	0	0.51	0.18	0.05				100.5	
T1-B	-32+60HPY	4740	3	304	CR	0.39	4.16	6.21	0.32	50.4	9.25	15.76	13.34	0.02	0.31	0.2	0.04				100.38	
T1-B	-32+60HPY	4740	3	405	CR	0.46	4.07	6.29	0.3	50.4	9.59	15.6	13.45	0.03	0.31	0.24	0.05				100.79	
T1-B	-32+60HPY	4740	3	512	CR	0.21	2.82	6.64	0.3	57.98	4.42	13.35	14.33	0	0.25	0.15	0.03				100.47	
T1-B	-32+60HPY	4740	3	608	CR	1.31	4.03	6.73	0.26	49.37	9.78	14.13	14.23	0.13	0.24	0.24	0				100.44	
T1-B	-32+60HPY	4740	3	609	CR	0.42	4.09	6.36	0.31	50.85	9.12	15.47	13.59	0.01	0.29	0.24	0.11				100.86	
T1-B	-32+60HPY	4740	3	704	CR	0.29	2.68	7.54	0.29	48.25	12.26	17.25	11.76	0.01	0.25	0.21	0.01				100.78	
T1-B	-32+60HPY	4740	4	613	CR	0.39	2.1	4.91	0.29	56.67	8.18	14.18	13.06	0.02	0.24	0.21	0				100.23	
T1-B	-32+60HPY	4740	4	616	CR	0.2	2.79	6.72	0.3	57.69	4.44	13.69	14.02	0	0.33	0.18	0				100.36	
T1-B	-32+60HPY	4740	4	707	CR	0.39	4.15	6.23	0.29	50.95	8.94	16.18	13.18	0	0.3	0.23	0.05				100.91	
T1-B	-32+60HPY	4740	5	610	CR	0.44	4.19	6.69	0.3	51.3	7.99	15.98	13.36	0.02	0.3	0.23	0.08				100.89	
T1-B	-32+60HPY	4740	5	612	CR	0.21	3.68	4.53	0.27	55.09	5.67	19.69	10.2	0.01	0.54	0.11	0.01				100.03	
T1-B	-16+32HPY	4741	2	304	CR	0.19	3.72	4.55	0.31	55.52	5.72	18.76	10.93	0.02	0.48	0.21	0.03				100.44	
T1-B	-16+32HPY	4741	2	305	CR	0.44	4.13	6.39	0.29	50.77	9.04	15.81	13.4	0	0.3	0.22	0.05				100.84	
T1-B	-16+32HPY	4741	2	502	CR	0.4	2.06	4.96	0.29	56.5	8.16	14.99	12.52	0.01	0.27	0.15	0.02				100.33	
T1-B	-16+32HIL	4741	3	206	CR	0.43	2.82	7.94	0.25	51.42	8.63	16.14	12.52	0	0.41	0.21	0.05				100.83	
T1-B	-16+32HIL	4741	3	301	CR	0.33	2.89	10.74	0.28	44.07	12.17	15.89	12.78	0.01	0.4	0.31	0.06				99.95	
T1-B	-16+32HIL	4741	3	304	CR	0.3	4.1	11.4	0.32	44.04	9.14	18.29	12.1	0.01	0.47	0.26	0.07				100.49	
T1-B	-16+32HIL	4741	3	307	CR	0.25	3.75	4.66	0.29	55.94	6.01	15.48	13.1	0	0.35	0.18	0.05				100.07	
T1-B	-16+32HIL	4741	3	502	CR	0.39	4.58	6.58	0.3	49.25	8.79	18.46	11.94	0	0.38	0.22	0.05				100.94	
T1-B	-16+32HIL	4741	3	506	CR	0.45	4.6	6.75	0.29	50.01	8.35	16.52	13.22	0.01	0.34	0.24	0.02				100.8	
T1-B	-16+32HIL	4741	4	203	CR	0.39	2.12	4.89	0.26	56.46	8.6	14.22	13.07	0.02	0.29	0.17	0.04				100.52	
T1-B	-16+32HIL	4741	4	301	CR	0.4	3.07	7.84	0.25	49.76	9.56	16.99	12.02	0.01	0.45	0.22	0.05				100.6	
T1-B	-16+32HIL	4741	4	308	CR	0.37	4.56	6.96	0.31	50.59	8.36	15.33	14.11	0.07	0.3	0.26	0.04				101.25	#
T1-B	-16+32HIL	4741	4	403	CR	0.26	2.45	11.88	0.31	48.07	9.51	12.82	15	0	0.23	0.18	0.01				100.72	
T1-B	-16+32HIL	4741	4	407	CR	0.29	1.78	4.75	0.22	60.3	6.03	13.07	13.7	0.01	0.27	0.19	0.06				100.65	
T1-B	-16+32HIL	4741	4	408	CR	0.19	3.65	4.12	0.25	58	3.99	18.52	11.03	0.01	0.5	0.15	0.04				100.43	
T1-B	-32+60HIL	4742	1	503	CR	0.35	3.35	15.61	0.28	45.15	3.91	16.69	12.97	0.03	0.32	0.12	0.04				98.83	
T1-B	-32+60HIL	4742	1	504	CR	0.48	4.1	6.2	0.34	50.53	9.34	15.85	13.31	0.02	0.26	0.22	0.07				100.72	
T1-B	-32+60HIL	4742	1	706	CR	0.26	2.41	11.83	0.3	47.4	9.75	12.85	14.76	0.01	0.29	0.23	0.08				100.17	
T1-B	-32+60HIL	4742	2	102	CR	0.2	1.65	9.1	0.24	54.57	5.28	17.85	10.77	0	0.5	0.16	0.09				100.43	
T1-B	-32+60HIL	4742	2	202	CR	0.2	2.79	6.62	0.29	57.59	4.42	13.81	13.89	0	0.33	0.19	0.07				100.19	

Name	Fraction	Mount	Cell	Grain	CFM	SiO2	TiO2	Al2O3	V2O3	Cr2O3	Fe2O3	FeO	MgO	CaO	MnO	NiO	ZnO	Nb2O5	Na2O	K2O	Total	Flag
T1-B	-32+60HIL	4742	2	204	CR	0.22	2.73	6.56	0.31	56.87	4.34	15.46	12.63	0.01	0.38	0.15	0.07				99.73	
T1-B	-32+60HIL	4742	2	406	CR	0.5	4.06	6.21	0.3	50.63	9.33	15.58	13.41	0	0.33	0.27	0.11				100.71	
T1-B	-32+60HIL	4742	2	407	CR	0.4	2.14	4.87	0.27	56.21	8.51	14.25	12.98	0	0.3	0.17	0.06				100.17	
T1-B	-32+60HIL	4742	2	606	CR	0.27	2.44	11.83	0.29	47.57	9.7	12.77	14.9	0.01	0.25	0.18	0				100.2	
T1-B	-32+60HIL	4742	2	608	CR	0.37	2.13	4.89	0.27	56.14	8.44	14.15	13	0.01	0.29	0.18	0				99.86	
T1-B	-32+60HIL	4742	2	810	CR	0.33	2.66	8.95	0.22	48.9	11.3	13.4	14.37	0	0.27	0.3	0.06				100.77	
T1-B	-32+60HIL	4742	3	207	CR	0.37	2.09	4.88	0.3	55.25	8.77	14.91	12.37	0.01	0.31	0.21	0.13				99.58	
T1-B	-32+60HIL	4742	3	507	CR	0.39	4.07	6.23	0.29	50.54	9.12	15.61	13.34	0.01	0.31	0.24	0.05				100.2	
T1-B	-32+60HIL	4742	4	102	CR	0.29	4.74	4.85	0.3	48.05	8.98	23.81	7.94	0.06	0.72	0.19	0.12				100.03	
T1-B	-32+60HIL	4742	4	310	CR	0.41	4.46	6.49	0.3	47.6	8.97	20.88	9.91	0.01	0.58	0.21	0.07				99.87	
T1-B	-32+60HIL	4742	4	405	CR	0.44	4.18	6.34	0.32	50.58	8.97	15.86	13.33	0.01	0.31	0.23	0.01				100.57	
T1-B	-32+60HIL	4742	4	408	CR	0.39	4.1	6.27	0.31	50.87	9.27	15.43	13.63	0	0.28	0.23	0.01				100.78	
T1-B	-32+60HIL	4742	4	506	CR	0.31	2.63	7.42	0.29	48.25	12.03	17.14	11.62	0	0.31	0.18	0.06				100.26	
T1-B	-32+60HIL	4742	4	608	CR	0.2	2.84	6.7	0.28	57.35	4.43	13.39	14.16	0	0.29	0.16	0.05				99.84	
T1-B	-32+60HIL	4742	4	703	CR	0.38	4.12	6.29	0.31	50.35	9.21	16.03	13.15	0	0.32	0.22	0.07				100.44	
T1-B	-32+60HIL	4742	4	704	CR	0.24	4	8.77	0.32	49.73	5.54	20.88	10	0.02	0.67	0.18	0.13				100.47	
T1-B	-32+60HIL	4742	5	101	CR	0.32	3.23	16.27	0.33	42.72	8.16	13.11	15.59	0	0.25	0.28	0.07				100.33	
T1-B	-32+60HIL	4742	5	110	CR	0.41	2.96	7.64	0.24	48.2	9.4	21.6	8.65	0.06	0.7	0.15	0.08				100.09	
T1-B	-32+60HIL	4742	5	203	CR	0.44	4.04	6.22	0.29	50.85	9.26	15.09	13.75	0.02	0.25	0.23	0.03				100.47	
T1-B	-32+60HIL	4742	5	308	CR	0.25	2.62	8.84	0.26	49.67	9.95	15	13.23	0	0.31	0.23	0.02				100.37	
T1-B	-32+60HIL	4742	5	402	CR	0.23	1.73	9.4	0.24	55.6	5.14	13.28	13.86	0.01	0.33	0.14	0.07				100.02	
T1-B	-32+60HIL	4742	5	601	CR	0.39	4.61	6.74	0.3	50.54	8.34	14.51	14.53	0	0.27	0.23	0				100.46	
T1-B	-32+60HIL	4742	4	702	CR	0.05	0.58	9.34	0.36	58.89	2.73	15.55	11.64	0.01	0.39	0.12	0.09				99.74	
T1-B	-32+60HPY	4740	1	503	CR	0.1	0.33	9.15	0.23	61	2.92	11.8	14.1	0	0.26	0.09	0.08				100.05	
T1-B	-16+32HIL	4741	4	207	CR	0.05	0.39	8.31	0.31	60.06	4.5	13.59	12.98	0.01	0.26	0.11	0.05				100.61	
T1-B	-32+60HIL	4742	3	104	CR	0.12	0.34	8.28	0.23	60.02	3.17	15.48	11.41	0	0.43	0.11	0.06				99.63	
T1-B	-32+60HIL	4742	3	205	CR	0.04	0.02	8.24	0.32	60.39	3.35	15.53	11.19	0.01	0.42	0.1	0.07				99.67	
T1-B	-32+60HIL	4742	3	602	CR	0.13	1.09	5.68	0.22	60.91	3.9	16.34	11.05	0.01	0.46	0.09	0.06				99.92	
T1-B	-32+60HIL	4742	3	806	CR	0.05	0.21	8.68	0.31	60.99	3.31	12.58	13.48	0.01	0.21	0.09	0.01				99.93	
T1-B	-32+60HIL	4742	4	103	CR	0.13	0.46	7	0.21	60.52	4.18	16.11	11.02	0.02	0.5	0.1	0.05				100.28	
T1-B	-32+60HPY	4740	2	505	CR	0.12	0.11	7.87	0.27	61.72	3.46	13.17	12.91	0.01	0.28	0.12	0.1				100.14	
T1-B	-32+60HPY	4740	2	808	CR	0.15	0.07	7.94	0.2	61.67	3.33	12.98	12.93	0.01	0.32	0.04	0.06				99.69	
T1-B	-32+60HPY	4740	4	602	CR	0.12	0.81	6.91	0.23	61.98	3.63	12.26	13.88	0.01	0.26	0.1	0.09				100.26	
T1-B	-32+60HPY	4740	5	208	CR	0.1	0.46	7.89	0.21	61.79	2.94	11.93	13.88	0.01	0.26	0.08	0.06				99.6	
T1-B	-16+32HPY	4741	2	508	CR	0.15	0.06	8.15	0.24	61.77	3.84	11.05	14.29	0.01	0.26	0.1	0.09				100.01	
T1-B	-32+60HIL	4742	3	308	CR	0.1	0.08	7.14	0.21	61.27	3.58	15.8	10.98	0	0.37	0.05	0.02				99.61	
T1-B	-32+60HIL	4742	5	307	CR	0.1	0.1	8.1	0.27	61.85	3.51	11.33	14.12	0	0.21	0.09	0.1				99.76	
T1-B	-32+60HPY	4740	1	510	CR	0.14	0.26	7.74	0.28	62	3.36	11.98	13.74	0	0.27	0.14	0.03				99.93	
T1-B	-32+60HPY	4740	3	601	CR	0.1	0.43	7.94	0.17	61.81	3.24	12.03	13.88	0.01	0.26	0.11	0.09				100.05	
T1-B	-32+60HPY	4740	5	608	CR	0.12	0.88	7.38	0.19	61.82	3.15	12.55	13.78	0.01	0.31	0.11	0.07				100.36	
T1-B	-16+32HIL	4741	3	205	CR	0.05	0.14	8.59	0.29	61.53	3.15	13.48	12.93	0	0.28	0.08	0.04				100.56	
T1-B	-32+60HIL	4742	2	309	CR	0.12	0.06	8.05	0.25	61.63	3.57	11.38	13.98	0.01	0.23	0.13	0.06				99.46	

Name	Fraction	Mount	Cell	Grain	CFM	SiO2	TiO2	Al2O3	V2O3	Cr2O3	Fe2O3	FeO	MgO	CaO	MnO	NiO	ZnO	Nb2O5	Na2O	K2O	Total	Flag
T1-B	-32+60HIL	4742	5	108	CR	0.09	0.52	7.17	0.21	61.88	3.11	14.02	12.49	0	0.36	0.11	0.04				100	
T1-B	-32+60HPY	4740	2	403	CR	0.13	0.07	8.13	0.24	62.19	3.28	12.05	13.71	0	0.24	0.11	0.15				100.29	
T1-B	-32+60HPY	4740	2	412	CR	0.12	0.05	8.17	0.23	62.52	3.17	11.68	13.98	0.01	0.22	0.08	0.09				100.31	
T1-B	-32+60HPY	4740	3	108	CR	0.12	0.41	5.82	0.26	62.86	3.95	13.73	12.5	0	0.31	0.11	0.09				100.17	
T1-B	-32+60HPY	4740	4	108	CR	0.13	0.05	8.11	0.25	62.64	3.35	11.51	14.14	0	0.21	0.09	0.13				100.62	
T1-B	-32+60HPY	4740	4	404	CR	0.14	0.27	7.26	0.22	62.34	3.64	12.26	13.54	0	0.31	0.07	0.06				100.11	
T1-B	-32+60HPY	4740	5	602	CR	0.14	0.04	8.12	0.26	62.49	3.3	11.79	13.91	0.01	0.24	0.08	0.03				100.4	
T1-B	-16+32HPY	4741	1	204	CR	0.14	0.79	7.14	0.22	62.09	3.04	11.52	14.26	0.01	0.21	0.11	0.11				99.65	
T1-B	-32+60HIL	4742	1	506	CR	0.15	0.17	6.57	0.21	62.81	3.68	12.66	13.09	0	0.29	0.07	0.03				99.73	
T1-B	-32+60HIL	4742	2	706	CR	0.12	0.06	8.03	0.22	62.26	3.18	11.57	13.93	0.01	0.23	0.07	0.04				99.72	
T1-B	-32+60HIL	4742	2	708	CR	0.14	0.28	6.58	0.23	62.11	3.55	13.91	12.26	0.02	0.33	0.08	0.06				99.54	
T1-B	-32+60HIL	4742	3	703	CR	0.15	0.12	7.16	0.22	62.87	3.3	12.63	13.22	0	0.26	0.07	0.08				100.07	
T1-B	-32+60HIL	4742	4	502	CR	0.11	0.2	7.39	0.18	62.31	3.65	11.72	13.86	0.01	0.22	0.1	0.17				99.9	
T1-B	-32+60HIL	4742	4	604	CR	0.11	0.31	6.62	0.21	62.15	3.02	16.55	10.61	0.01	0.48	0.06	0.08				100.2	
T1-B	-32+60HIL	4742	4	711	CR	0.14	0.33	7.3	0.25	62.12	3.53	11.76	13.82	0.03	0.29	0.08	0.07				99.71	
T1-B	-32+60HPY	4740	1	406	CR	0.1	0.74	7.16	0.22	62.62	3.08	11.78	14.22	0	0.25	0.09	0.03				100.27	
T1-B	-32+60HPY	4740	2	510	CR	0.15	0.06	8.11	0.19	62.48	3.12	11.29	14.17	0.01	0.22	0.09	0.07				99.95	
T1-B	-32+60HPY	4740	2	515	CR	0.11	0.26	7.5	0.2	62.54	3.47	11.93	13.88	0.01	0.22	0.09	0.07				100.28	
T1-B	-32+60HPY	4740	2	606	CR	0.12	0.81	6.74	0.23	62.86	3.22	12.23	13.99	0	0.2	0.09	0.05				100.54	
T1-B	-32+60HPY	4740	2	702	CR	0.14	0.37	7.14	0.23	62.09	4.15	11.96	13.87	0	0.23	0.14	0.07				100.4	
T1-B	-32+60HPY	4740	2	715	CR	0.13	0.3	7.56	0.22	62.33	3.37	12.06	13.77	0	0.24	0.11	0.08				100.17	
T1-B	-32+60HPY	4740	2	805	CR	0.16	0.34	7.28	0.25	62.68	3.25	11.84	13.88	0.01	0.25	0.1	0.07				100.11	
T1-B	-32+60HPY	4740	3	104	CR	0.27	0.09	7.42	0.16	62.4	4.47	10.47	14.67	0	0.29	0.12	0.06				100.42	
T1-B	-32+60HPY	4740	3	306	CR	0.14	0.78	7.07	0.25	62.47	3.12	11.37	14.45	0.01	0.18	0.11	0.07				100.01	
T1-B	-32+60HPY	4740	3	508	CR	0.12	0.15	7.46	0.22	62.83	3.43	12.03	13.73	0.01	0.28	0.09	0.06				100.4	
T1-B	-32+60HPY	4740	3	510	CR	0.11	0.46	7.95	0.15	62.46	3.29	11.83	14.2	0	0.27	0.08	0.07				100.87	
T1-B	-32+60HPY	4740	3	611	CR	0.13	0.63	7.02	0.26	62.19	3.34	12.43	13.63	0	0.25	0.11	0.03				100.02	
T1-B	-32+60HPY	4740	3	705	CR	0.15	0.34	7.01	0.24	62.59	3.83	12.05	13.74	0	0.32	0.12	0.07				100.45	
T1-B	-32+60HPY	4740	3	708	CR	0.13	0.06	8.26	0.24	62.38	3.42	11.4	14.22	0.01	0.2	0.1	0.03				100.45	
T1-B	-32+60HPY	4740	3	710	CR	0.15	0.06	8.18	0.25	62.08	3.8	11.79	13.93	0.01	0.3	0.08	0.03				100.64	
T1-B	-32+60HPY	4740	4	113	CR	0.13	0.26	6.64	0.22	62.72	3.67	12.41	13.33	0	0.29	0.13	0.06				99.85	
T1-B	-32+60HPY	4740	4	311	CR	0.14	0.05	7	0.22	62.27	3.57	14.2	12.04	0	0.4	0.09	0.09				100.08	
T1-B	-32+60HPY	4740	4	313	CR	0.16	0.06	8.16	0.17	62.75	3.47	11.11	14.42	0	0.26	0.12	0				100.66	
T1-B	-32+60HPY	4740	4	501	CR	0.14	0.18	7.11	0.22	62.81	3.47	12.52	13.38	0.01	0.23	0.09	0.06				100.21	
T1-B	-32+60HPY	4740	5	108	CR	0.12	0.96	6.33	0.24	62.94	3.13	13.19	13.41	0	0.25	0.11	0.05				100.74	
T1-B	-32+60HPY	4740	5	114	CR	0.17	0.05	7.72	0.24	62.5	3.05	13.36	12.78	0	0.32	0.12	0.06				100.37	
T1-B	-32+60HPY	4740	5	304	CR	0.12	0.07	8.09	0.25	62.28	3.3	11.53	14	0.01	0.26	0.1	0				100.01	
T1-B	-32+60HPY	4740	5	405	CR	0.14	0.36	7.98	0.2	62.04	3.52	11.99	13.95	0	0.33	0.09	0.04				100.62	
T1-B	-32+60HPY	4740	5	502	CR	0.1	0.45	7.9	0.19	62.24	3.06	12.01	13.96	0	0.28	0.1	0.04				100.33	
T1-B	-32+60HPY	4740	5	508	CR	0.14	0.28	7.17	0.23	62.87	3.39	11.93	13.83	0.01	0.22	0.08	0.02				100.17	
T1-B	-32+60HPY	4740	5	603	CR	0.12	0.18	7.38	0.16	62.72	3.21	13.2	12.95	0	0.34	0.09	0.04				100.39	
T1-B	-32+60HPY	4740	5	614	CR	0.1	0.46	7.97	0.15	62.14	2.94	12.27	13.79	0	0.3	0.09	0.07				100.29	

Name	Fraction	Mount	Cell	Grain	CFM	SiO2	TiO2	Al2O3	V2O3	Cr2O3	Fe2O3	FeO	MgO	CaO	MnO	NiO	ZnO	Nb2O5	Na2O	K2O	Total	Flag
T1-B	-16+32HPY	4741	2	104	CR	0.15	0.77	7.12	0.23	62.44	3.47	11.49	14.46	0	0.21	0.12	0.03				100.48	
T1-B	-16+32HPY	4741	2	307	CR	0.13	0.33	7.32	0.24	62.47	3.48	11.77	13.92	0	0.26	0.11	0.03				100.05	
T1-B	-16+32HPY	4741	2	505	CR	0.14	0.06	8.12	0.17	62.53	3.23	10.87	14.44	0	0.24	0.1	0.06				99.95	
T1-B	-16+32HIL	4741	3	302	CR	0.12	0.05	8.31	0.26	62.23	3.06	11.66	13.91	0.01	0.28	0.09	0.07				100.04	
T1-B	-16+32HIL	4741	3	404	CR	0.13	0.08	7.47	0.28	62.74	3.28	12.55	13.31	0	0.27	0.1	0.09				100.3	
T1-B	-16+32HIL	4741	4	202	CR	0.17	0.37	7.24	0.34	62.73	3.03	11.98	13.77	0.01	0.25	0.1	0				99.99	
T1-B	-32+60HIL	4742	1	206	CR	0.15	0.15	7.17	0.24	62.41	3.77	12	13.58	0.01	0.31	0.11	0.06				99.94	
T1-B	-32+60HIL	4742	1	608	CR	0.11	0.77	6.99	0.23	62.09	3.03	11.5	14.17	0.01	0.27	0.11	0.06				99.35	
T1-B	-32+60HIL	4742	1	705	CR	0.12	0.29	7.39	0.2	62.31	3.36	12.19	13.62	0.01	0.23	0.11	0.04				99.86	
T1-B	-32+60HIL	4742	2	603	CR	0.12	0.06	7.98	0.19	62.45	2.99	11.71	13.84	0	0.22	0.09	0				99.65	
T1-B	-32+60HIL	4742	3	307	CR	0.1	0.77	6.92	0.25	62.85	2.98	12.56	13.74	0	0.26	0.11	0				100.53	
T1-B	-32+60HIL	4742	3	407	CR	0.14	0.05	8.1	0.22	62.14	3.56	11.25	14.21	0.01	0.21	0.12	0.02				100.03	
T1-B	-32+60HIL	4742	3	706	CR	0.1	0.21	7.37	0.18	62.79	3.17	11.68	13.91	0	0.21	0.11	0.03				99.76	
T1-B	-32+60HIL	4742	3	708	CR	0.15	0.03	7.42	0.25	62.36	3.48	12.9	12.97	0	0.3	0.12	0.02				100	
T1-B	-32+60HIL	4742	4	111	CR	0.12	0.05	8.12	0.23	62.29	3.35	11.48	14.06	0.02	0.22	0.11	0.08				100.11	
T1-B	-32+60HIL	4742	4	205	CR	0.15	0.08	8.09	0.19	62.65	3.21	11.69	14.01	0	0.24	0.1	0.07				100.47	
T1-B	-32+60HIL	4742	4	301	CR	0.12	0.29	7.17	0.24	62.08	3.58	11.44	13.94	0.02	0.25	0.1	0.06				99.28	
T1-B	-32+60HIL	4742	4	503	CR	0.13	0.1	7.07	0.22	62.36	3.63	12.9	12.92	0	0.34	0.1	0.02				99.78	
T1-B	-32+60HIL	4742	5	109	CR	0.14	0.34	7.22	0.25	62.56	3.5	11.8	13.91	0.01	0.25	0.11	0.05				100.14	
T1-B	-32+60HIL	4742	5	201	CR	0.12	0.04	7.47	0.25	62.32	3.36	14.17	12.21	0	0.37	0.1	0.07				100.48	
T1-B	-32+60HIL	4742	5	302	CR	0.38	0.51	5.39	0.16	62.38	4.99	13.06	12.94	0	0.33	0.14	0.06				100.34	
T1-B	-32+60HIL	4742	5	403	CR	0.13	0.33	7.26	0.22	62.43	3.48	12.01	13.75	0	0.26	0.11	0.04				100.01	
T1-B	-32+60HIL	4742	5	406	CR	0.13	0.06	8.05	0.17	62.11	3.12	12.95	13.08	0.01	0.29	0.08	0.06				100.1	
T1-B	-32+60HPY	4740	5	512	CR	0.12	0.2	7.42	0.2	63.21	3.37	12.03	13.84	0.01	0.27	0.12	0.09				100.89	
T1-B	-32+60HIL	4742	5	107	CR	0.13	0.12	6.94	0.27	63.05	3.57	11.47	13.91	0.01	0.25	0.06	0.08				99.87	
T1-B	-32+60HIL	4742	5	408	CR	0.14	0.14	6.95	0.24	63.66	3.12	11.56	13.93	0	0.27	0.08	0.09				100.16	
T1-B	-32+60HPY	4740	2	102	CR	0.13	0.13	6.95	0.21	63.11	3.14	11.72	13.69	0	0.24	0.14	0.01				99.48	
T1-B	-32+60HPY	4740	2	306	CR	0.12	0.22	7.38	0.18	63.11	3.38	11.9	13.9	0	0.26	0.1	0.01				100.56	
T1-B	-32+60HPY	4740	2	707	CR	0.12	0.23	7.32	0.19	63.01	3.32	11.94	13.84	0.01	0.23	0.09	0.06				100.36	
T1-B	-32+60HPY	4740	2	801	CR	0.12	0.08	7.3	0.21	63.42	3.12	11.7	13.87	0.01	0.26	0.1	0.05				100.23	
T1-B	-32+60HPY	4740	4	109	CR	0.14	0.09	7.25	0.27	63.11	3.06	12.09	13.54	0	0.26	0.13	0.06				99.97	
T1-B	-32+60HPY	4740	4	512	CR	0.12	0.14	7	0.22	63.28	3.42	11.63	13.9	0.01	0.24	0.09	0.04				100.08	
T1-B	-32+60HPY	4740	4	712	CR	0.14	0.13	6.99	0.22	63.62	3.61	11.48	14.1	0	0.25	0.1	0.02				100.66	
T1-B	-16+32HIL	4741	3	406	CR	0.21	0.15	6.64	0.26	63.16	3.81	12.07	13.56	0.03	0.28	0.13	0				100.29	
T1-B	-32+60HIL	4742	1	102	CR	0.28	0.02	5.38	0.22	63.16	5.16	11.17	13.8	0	0.25	0.14	0.06				99.63	
T1-B	-32+60HIL	4742	1	410	CR	0.16	0.22	5.4	0.22	63.86	3.95	12.59	13.08	0	0.27	0.14	0.08				99.98	
T1-B	-32+60HIL	4742	2	511	CR	0.23	0.06	5.69	0.13	63.02	5.21	11.43	13.79	0.01	0.24	0.13	0.06				100.01	
T1-B	-32+60HIL	4742	3	501	CR	0.1	0.13	6.96	0.22	63.17	3.36	11.66	13.79	0	0.27	0.13	0.08				99.88	
T1-B	-32+60HIL	4742	3	603	CR	0.16	0.29	6.88	0.2	63.28	3.34	12.23	13.64	0	0.25	0.12	0				100.38	
T1-B	-32+60HPY	4740	1	212	OLV	40.73	0.03	0.06		0.12		9.74	48.38	0.11	0.13	0.4			0.01	0	99.71	
T1-B	-32+60HPY	4740	1	305	OLV	40.59	0.05	0.02		0.13		10.27	48.1	0.1	0.12	0.3			0.03	0	99.71	
T1-B	-32+60HPY	4740	1	307	OLV	40.63	0.03	0.04		0.07		10.23	48.19	0.11	0.1	0.34			0	0.01	99.74	

Name	Fraction	Mount	Cell	Grain	CFM	SiO2	TiO2	Al2O3	V2O3	Cr2O3	Fe2O3	FeO	MgO	CaO	MnO	NiO	ZnO	Nb2O5	Na2O	K2O	Total	Flag
T1-B	-32+60HPY	4740	1	312	OLV	39.47	0.02	0.02		0.01		16.02	43.7	0.03	0.24	0.17			0	0.01	99.67	
T1-B	-32+60HPY	4740	1	213	OLV	40.71	0.01	0.04		0.06		9.51	48.48	0.11	0.13	0.39			0	0	99.45	
T1-B	-32+60HPY	4740	1	301	OLV	40.33	0.02	0.03		0.15		8.38	49.19	0.11	0.15	0.39			0.03	0	98.78	
T1-B	-32+60HPY	4740	1	309	OLV	40.56	0.04	0.03		0.07		9.39	48.54	0.08	0.1	0.4			0	0	99.21	
T1-B	-32+60HPY	4740	1	310	OLV	40.47	0.03	0.02		0.11		9.35	48.82	0.13	0.15	0.4			0.01	0	99.47	
T1-B	-32+60HPY	4740	1	214	OLV	41.14	0.04	0.03		0.05		8.47	49.86	0.05	0.12	0.43			0	0.01	100.2	
T1-B	-32+60HPY	4740	3	503	IL		43.27	0.64		19.09	1.71	18.56	16.68	0	0.09		0	0.06			100.08	
T1-B	-32+60HPY	4740	1	110	PP	41.56	0.3	20.55		3.98		6.77	20.24	5.23	0.36	0			0.03	0	99.01	
T1-B	-32+60HPY	4740	1	201	PP	40.29	0.46	14.56		11.46		5.53	18.87	6.85	0.3	0			0.05	0	98.37	#
T1-B	-32+60HPY	4740	1	211	PP	41.3	0.01	18.16		7.64		6.73	20.49	4.47	0.35	0.03			0	0.01	99.18	
T1-B	-32+60HPY	4740	1	102	PP	42.34	0	20.47		4.71		5.92	23	2.46	0.3	0.01			0.01	0	99.23	
T1-B	-32+60HPY	4740	1	104	PP	42.59	0.02	20.73		4.43		6.14	22.93	2.9	0.26	0.03			0.02	0	100.04	
T1-B	-32+60HPY	4740	1	109	PP	42.48	0.01	20.64		4.32		6.1	23.19	2.91	0.3	0.05			0.02	0	100.02	
T1-B	-32+60HPY	4740	1	205	PP	41.75	0	16.91		8.56		6.44	21.8	3.81	0.28	0.01			0	0	99.36	
T1-B	-32+60HPY	4740	1	210	PP	41.95	0.03	16.98		8.42		6.4	21.49	3.73	0.33	0			0	0	99.32	
T1-B	-32+60HPY	4740	1	108	PP	41.15	0.16	16.56		9.79		6.27	21.27	3.39	0.36	0			0.02	0	98.97	
T1-B	-32+60HPY	4740	1	206	PP	41.35	0.14	16.36		9.64		6.26	21.44	3.47	0.33	0			0.01	0	98.99	
T1-B	-32+60HPY	4740	1	101	PP	40.34	0.48	15		10.97		5.49	19.13	6.55	0.27	0.01			0.07	0	98.31	#
T1-B	-32+60HPY	4740	1	103	PP	41.62	0.21	19.37		5.68		6.43	20.22	5.54	0.36	0			0.02	0	99.45	
T1-B	-32+60HPY	4740	1	105	PP	41.29	0.25	18.69		6.86		6.36	20.2	5.53	0.33	0			0.03	0	99.54	
T1-B	-32+60HPY	4740	1	106	PP	41.28	0.22	19.42		5.77		6.48	20.05	5.5	0.37	0			0.03	0	99.12	
T1-B	-32+60HPY	4740	1	107	PP	41.3	0.11	18.78		6.71		6.32	20.17	5.26	0.33	0.01			0.02	0	99	
T1-B	-32+60HPY	4740	1	111	PP	41.83	0.2	19.65		5.63		6.37	20.26	5.44	0.32	0			0.02	0	99.71	
T1-B	-32+60HPY	4740	1	202	PP	41.5	0.13	18.72		6.68		6.3	20.22	5.24	0.33	0.03			0.02	0	99.18	
T1-B	-32+60HPY	4740	1	203	PP	41.59	0.23	18.65		7.08		6.37	20.02	5.52	0.37	0.04			0.01	0	99.87	
T1-B	-32+60HPY	4740	1	204	PP	41.26	0.22	18.47		6.74		6.32	20.08	5.56	0.4	0			0.03	0	99.09	
T1-B	-32+60HPY	4740	1	207	PP	41.38	0.24	18.77		6.87		6.39	20.16	5.55	0.34	0			0.02	0.01	99.72	
T1-B	-32+60HPY	4740	1	208	PP	41.25	0.06	18.95		6.47		7.05	19.4	5.81	0.43	0.03			0.04	0	99.48	
T1-B	-32+60HPY	4740	1	209	PP	41.27	0.03	19.03		6.3		7.02	19.46	5.7	0.42	0			0	0	99.24	
T1-B	-16+32HPY	4741	1	101	PP	41.7	0.17	19.51		5.66		6.3	20.16	5.55	0.38	0.01			0.03	0	99.46	
T1-B	-16+32HPY	4741	1	102	PP	40.86	0.85	16.09		8.59		6.38	19.52	6.5	0.37	0.03			0.04	0	99.23	