

2006

Prospecting & Sampling

## Black Lake Property

Claim: PA 4203997  
( 1 unit )

**2.34750**

Sharron Lake Area  
G-2207  
Patricia Mining Division

Prepared for Recorded Holder

N.W.T. Copper Mines Limited

By  
**Ted Cox**  
January, 2007

## TABLE OF CONTENTS

Introduction.....	1
Property.....	1
History .....	1
Location and Access.....	1
Property Geology .....	2
Project Summary.....	2
Project Results .....	3
Author Qualifications.....	4
Trenching and Sample Locations .....	5
Location Map .....	6
Mining Land Tenure Map.....	G-2207
Claim #4203997.....	Feature Map
Assay Certificate .....	7

## INTRODUCTION

A. prospecting and sampling program was requested of the author by N.W.T. Copper Mines Limited of Etobicoke, Ontario on claim 4203997 in the Sharron Lake Area of the Patricia Mining Division.

## PROPERTY

Claim 4203997 consists of 1 (16 ha) unit. ( See Mining Land Tenure Map: G-2207 Sharron Lake Area). The claim is part of a 33 claim group 100% owned by N.W.T. Copper Mines Limited.

## HISTORY

The one unit claim was acquired for N.W.T by staking in 2003 then restaked in 2005. It was previously held under lease by Auralee Gold Mines in the 1940's then Delhi Pacific Mines. In 1963 work included two drill holes and was documented by A.S. Bayne.

## LOCATION & ACCESS

The claim group is located 25 km east-northeast of Sioux Lookout. Access is by float plane to Clamshell Lake, then by canoe. A creek runs through the center of the claim.

## PROPERTY GEOLOGY

The project lies along the northern margin of the central portion of the Wabigoon Subprovince. The property is underlain by mafic to felsic volcanic and volcanoclastic lithologies and clastic and chemical metasedimentary rocks. The volcanics and metasediments are cut by multiphase gabbroic to leucocratic intrusions and quartz-feldspar porphyry dikes. Northeast and east trending shears and zones of deformation cross the property. The majority of the gold occurrences are associated with the extensive northeast trending, altered deformation corridor.

The targets are shear controlled high-grade quartz-vien systems similar to Red Lake.

## PROJECT SUMMARY

A prospecting and sampling program was conducted after re-locating a showing near the center of the claim south of the creek. The showing was located by walking west of Clamshell Lake to a GPS coordinate projected from an old map produced in 1969 by A.S. Bayne.

The showing was prospected, hand stripped, sampled and documented. Five grab/chip samples and 3 – 50cm channel samples were collected from the exposed surface of the showing. Orientation features, geology and sample locations were mapped. Samples were assayed for Au, Ag & Cu by Swastika Laboratories, Swastika, Ontario. All samples had gold values ranging from 0.23 g/tonne to 7.95 g/tonne

The field work was conducted on October 6, 7 & 8, 2006 by Dan Brunne of Whitefish Falls, Ontario and the author. Results were plotted and this report was drafted in January, 2007 by the author for assessment credit purposes.

## PROJECT RESULTS

Hand trenching opened up a quartz carbonate zone with carbonate alteration and chalcopyrite. Two veins were located 2 to 3 m wide and separated by 4 m. The host rock is silicified mafic with stringer veins and irregularly shaped granite present. Best values were gained from the carbonate alteration where less chalcopyrite was present.

The zone is dipping almost vertically and resembles the Moretti showing to the northeast. An old drill hole was located in the southern vein (1960 drill hole reported 48g/t au / 2.0m).

Pipe pole testing confirmed the continuation of the zone at both ends for several meters meriting the recommendation of a mechanical stripping program.

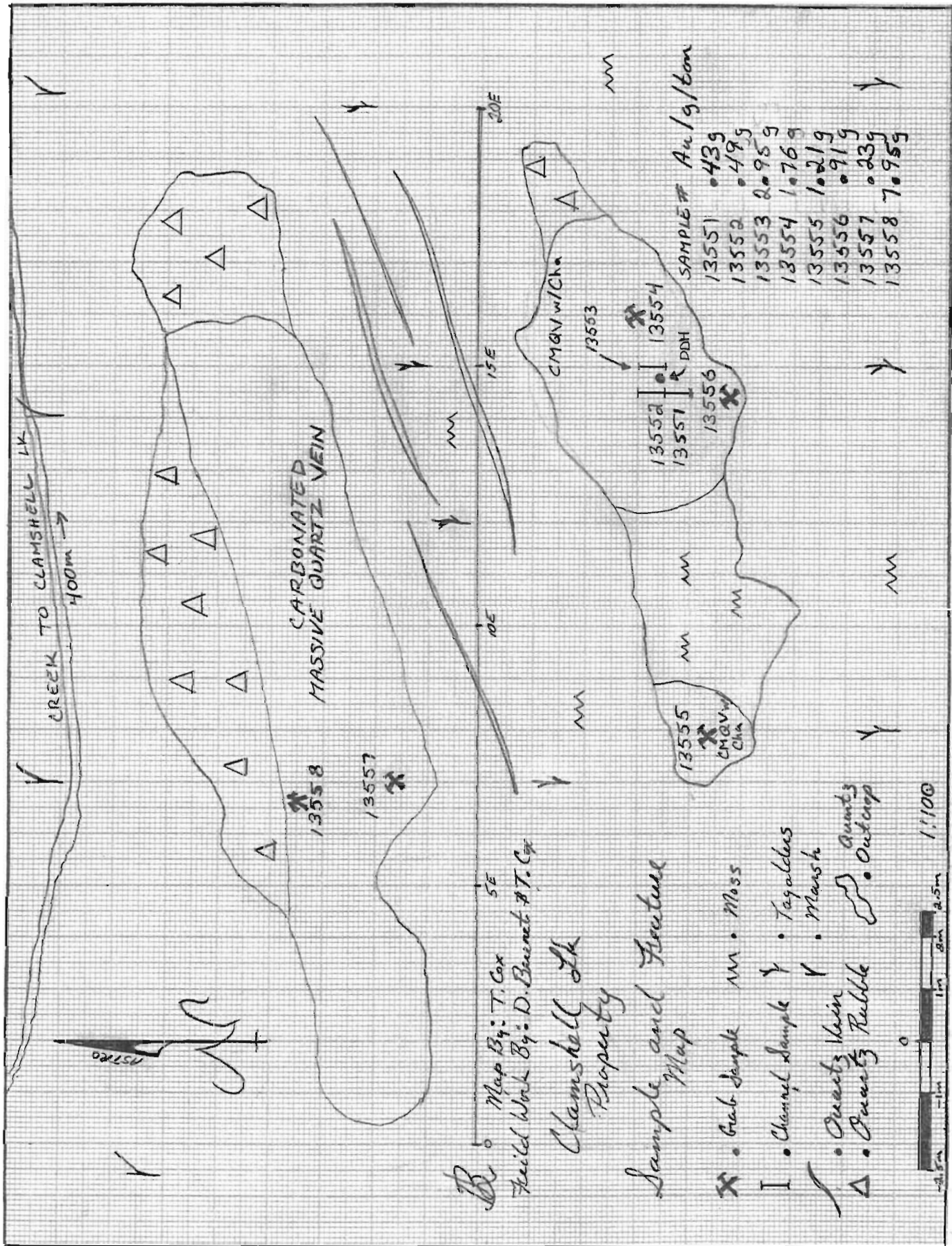
AUTHOR QUALIFICATIONS

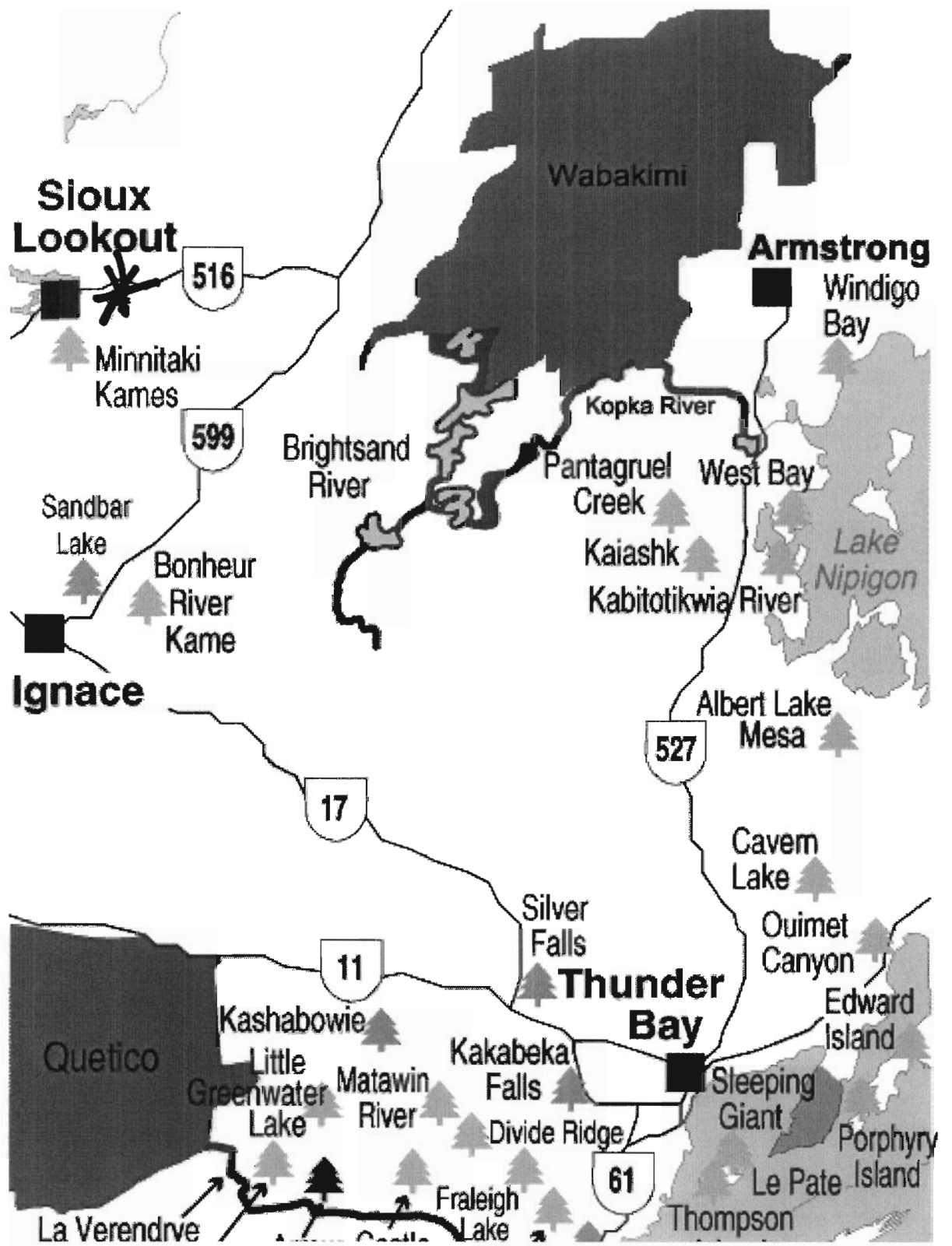
I, Ted Cox, do hereby qualify as follows:

- 1) That I am an independent geological/geophysical technician, and that I reside at 357 Garnet Drive, Beardmore, Ontario.
- 2) That I am a graduate of Cambrian Collage, Sudbury, Ontario 2000, with a Geological Engineering Degree. This course included geophysical theory, Geophysical Field Camp, and Geophysical Interpretation.
- 3) That I have been practicing my profession in mineral exploration since 1994.
- 4) That I have completed the work described in this report, completed the additional maps and am the responsible author of this report's contents.

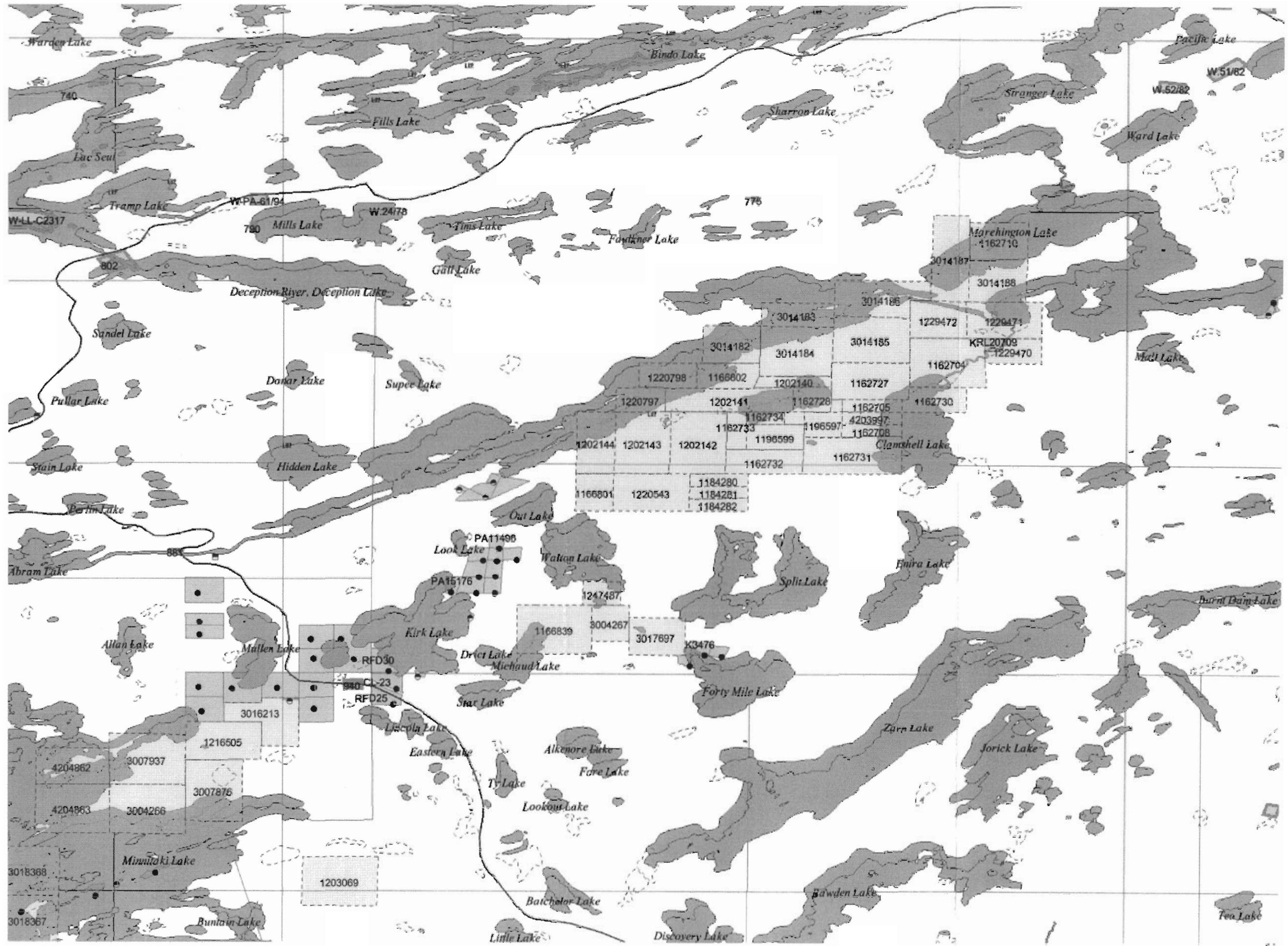
January 30, 2007

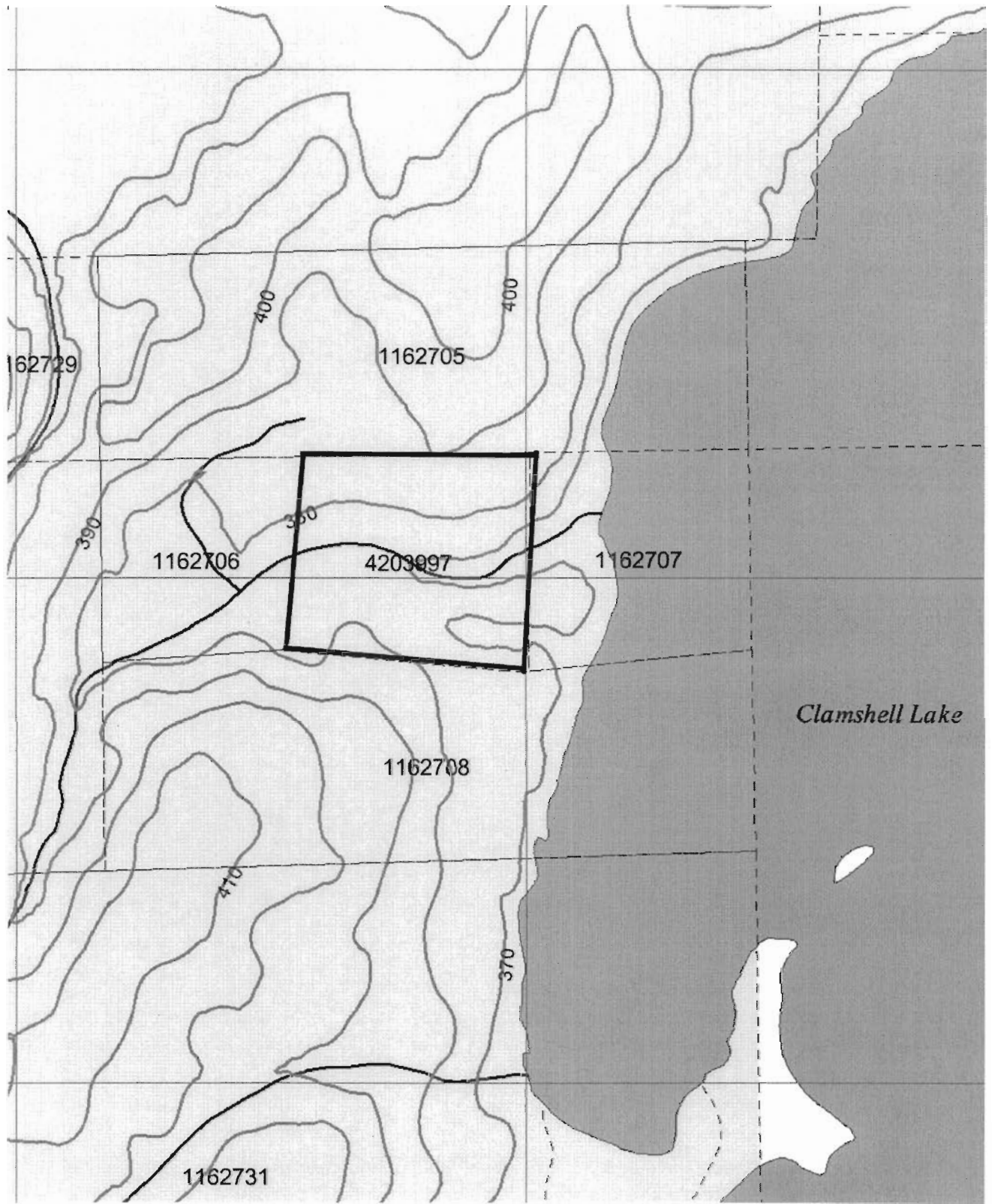
.......... Ted Cox.













Established 1928

# Swastika Laboratories Ltd

Assaying - Consulting - Representation

## Assay Certificate

6W-3583-RA1

Company: **NWT COPPER MINES LTD.**  
 Project: **Clownshell Pattern**  
 Attn: **N. Cox**

Date: JAN-22-07

We hereby certify the following Assay of 8 Rock samples  
 submitted NOV-07-06 by .

Sample Number	Au g/tonne	Au Check g/tonne	Au Check g/tonne	Ag g/tonne	Cu PPM	Cu %	Multi Element
13551	0.43	-	0.15	2.3	1030	-	Results to follow
13552	0.46	0.49	0.47	63.7	>10000	2.42	
13553	2.95	-	0.43	12.1	5590	-	
13554	1.76	-	2.02	0.4	77	-	
13555	1.20	1.21	0.54	33.8	>10000	2.27	
13556	0.91	-	1.16	25.9	9080	-	
13557	0.23	-	0.18	0.1	28	-	
13558	7.95	-	6.03	1.0	18	-	

*Clownshell Lab*

Certified by *[Signature]*

1 Cameron Ave., P.O. Box 10, Swastika, Ontario, M0E 1T0  
 Telephone (705) 642-3244 Fax (705) 642-3300