



2.34863

Location and access

Access is via Highway 583 south of Hearst, Ontario for 20 km. The final access is by off-road all terrain vehicles and requires crossing two small creeks

Previous Work:

The property has been worked as follows:

- 1939 A. Villeneuve conducted stripping and excavation of a few shallow blast pits.
- 1957 I. Topaloff conducted further trenching and drilled 3 short drill holes 7/8 inch diameter, totaling 89ft.
- 1978 Noranda Exploration Co. Ltd. explored a grid conducting a VLF-EM survey and ground Magnetics
- 2001 Lecours Exploration Inc. conducted further manual stripping and sampling and exposed a pegmatite of approximate area 13m by 30m which hosts a spodumene zone.
- 2002 Fred Breaks and J.B. Selway of the OGS visited the property and detected 6 different zones of pegmatite hosting lepidotite pods and coarse-grained beryl crystal
- 2005 Lecours Exploration Inc. prospected the property and uncovered another zoned pegmatite 100m south of the original showing.

Regional Geology:

The following is extracted from F.W. Breaks of the OGS summary of field activities during 2002:

“The main geological feature in this area is marked by two northeast-trenching, en echelon masses of subdivided granitic rocks (Bennett et al. 1967a 1967b) that approximately corresponds with the metamorphic transition from medium-grade, nonmigmatized metawacke and interbedded metapelites (in Shetland, Staunton, Orkney, Ebbs, Scholfield, Caithness and Rykert townships) to a high grade layered migmatites in a large area to the northwest, between the towns of Hearst, Jogues and Lac St. Therese. The main rock type is metatexite that was mapped previously as “biotite-quartz-feldspar gneiss” by Bennet et al. (1967a, 1967b). this rock type has varied, foliation-concordant, white granitic to pegmatitic leucosome (5 to 20%) that has been invaded by later, generally pink dikes and small masses of biotite-bearing, postasic pegmatite and fine to medium-grained biotite granite.”

Property Geology:

The Decoy Showing was discovered in 2001 by manual trenching. A pegmatite zone of area approximately 13m by 30m was exposed, with the following mineral content as indicated by assays: tourmaline, gallium, tantalum, cesium, rubidium and niobium, scandium. Coarse muscovite flakes are dispersed throughout. During his 2002 field visit, F.W. Breaks of the OGS uncovered lepidolite pods and one single zoned beryl crystal (22 cm wide) with a pink core and green rim with a high CS20 content of 2.6% by weight, plus additional black tourmaline, manganocolumbite. . The following is extracted from Mr. F.W. Breaks' summary of field work: “The Lowther Township rare-element pegmatite is at the metamorphic transition between medium and high grade metasedimentary rocks. Emplacement of the pegmatitic granite parent mass is interpreted to have occurred after metamorphism as the pluton is undeformed and not recrystallized. The pegmatite occurs as a lens-shaped body, 3.7 to 11m in width over a minimum length of 110m, in which the long axis of the pegmatite is oriented at 110 degrees. The pegmatite lens was previously explored by four blast pits situated in the middle 50m of the pegmatite. Where it has the greatest width, the pegmatite is enclosed in a north-tapering mass of

garnet-biotite pegmatitic granite that is locally enriched in sodium (4.81 weight per cent Na₂O) proximal to the Lowther Township pegmatite. There is a gradational contact between the Lowther Township pegmatite and its parent granite (potassic pegmatite). The white, coarsely graphic parent granite contains blocky perthitic pink to white potassium feldspar, coarse-grained green muscovite (up to 5.5 cm across) and minor black tourmaline and garnet. The pegmatitic granite is enclosed within massive biotite-hornblende diorite." Some property highlights of the Decoy Showing are:

-coarse-grained zoned beryl crystal (22cm wide) with a pink core and green rim assaying 4.07% Be and 4390 ppm Cs

-Spodumene zone that assayed (chip sample) 2.14% Li over 2.3 m

-Channel sample that assayed 100 ppm Ga over 2.5m

-Grab sample assaying 3244 ppm Ta. and 1.28% Nb.

-Grab sample of Lepidolite pod assayed 4700 ppm Cs and 1.3% Li

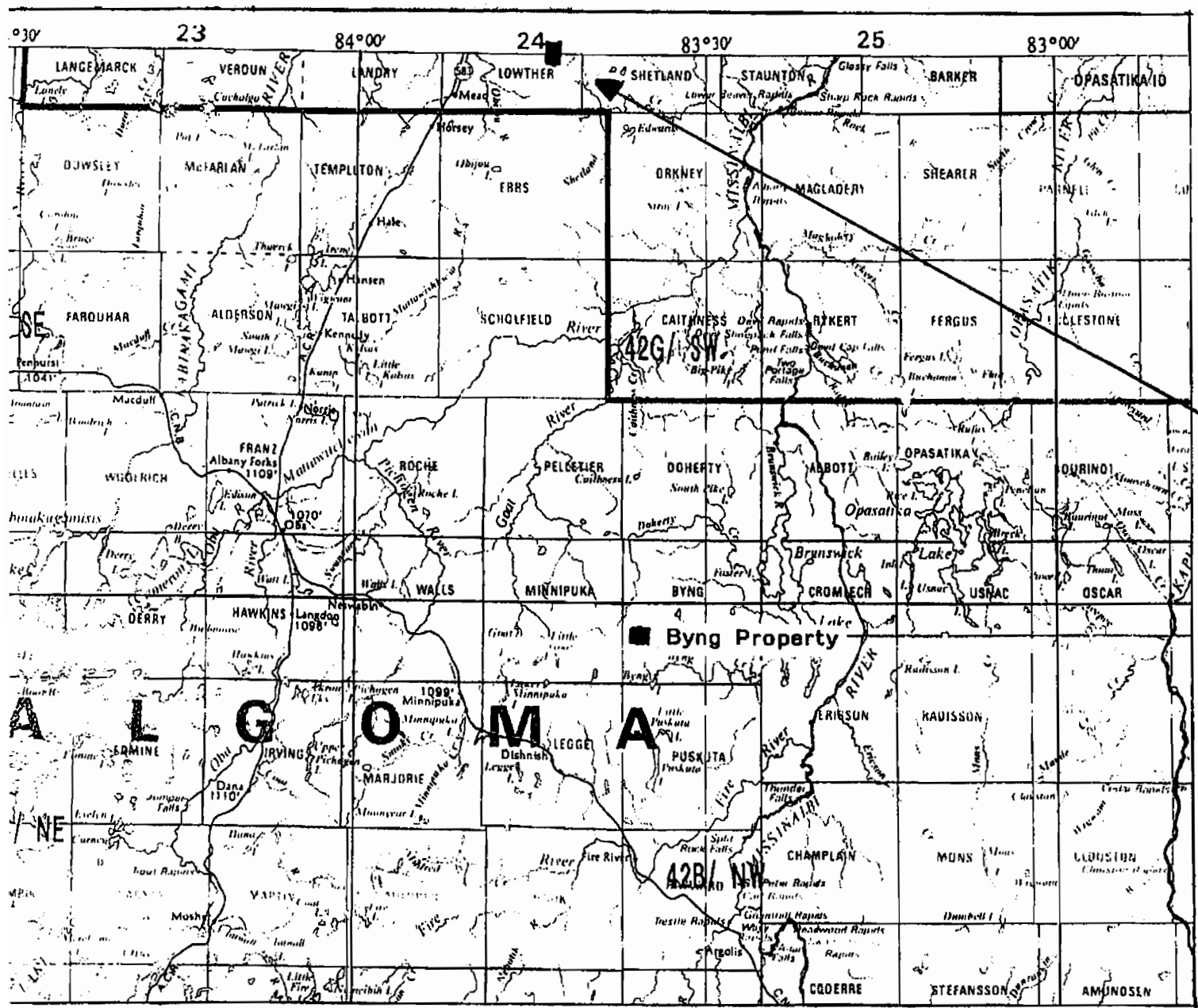
-Coarse muscovite crystal (grab sample) up to 30 cm across assayed 1155 ppm Li, 247 ppm Cs and 54 ppm Ta

-Tourmaline and spessartine garnets are also located

The Mosquito Showing was discovered in 2005 about 100m south of the Decoy Showing. It is exposed for an area 1m by 8m. A pink quartz zone is present. Brown beryls (up to 5 cm wide) were identified within the feldspar zone surrounding the pegmatite. Grab samples of these beryls assayed 1.86% Be. In 2006 a grab sample taken from the showing, returned with assays with up to 115.5 ppm.Sc.

Stripping and sampling result

In the period between 20 – 25 of September 2006 Byng mining contracted Cross Country Landscaping and Services to perform manual stripping and sampling on the property. Two men spent 3 days performing manual stripping, in total 600 square ft of outcrop was exposed. The program uncovered a Beryl crystal with pink rim and light green center measuring 104 cm wide. Manganocolumbite crystal were found within a Feldspar zone, some manganocolumbite crystals were up to 1 ½" wide. Another spodumene zone was also located. 1 day was spent sampling using cut off saw and diamond blade, some of those samples were sent to ALS Chemex and IPL labs for assays. "Reports are enclosed in this report.



ekim #
3005830

Scale: 1:800 000

Property Location

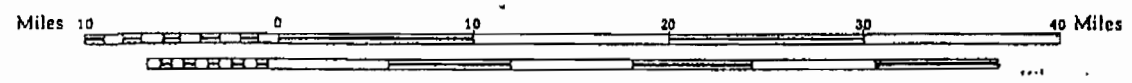
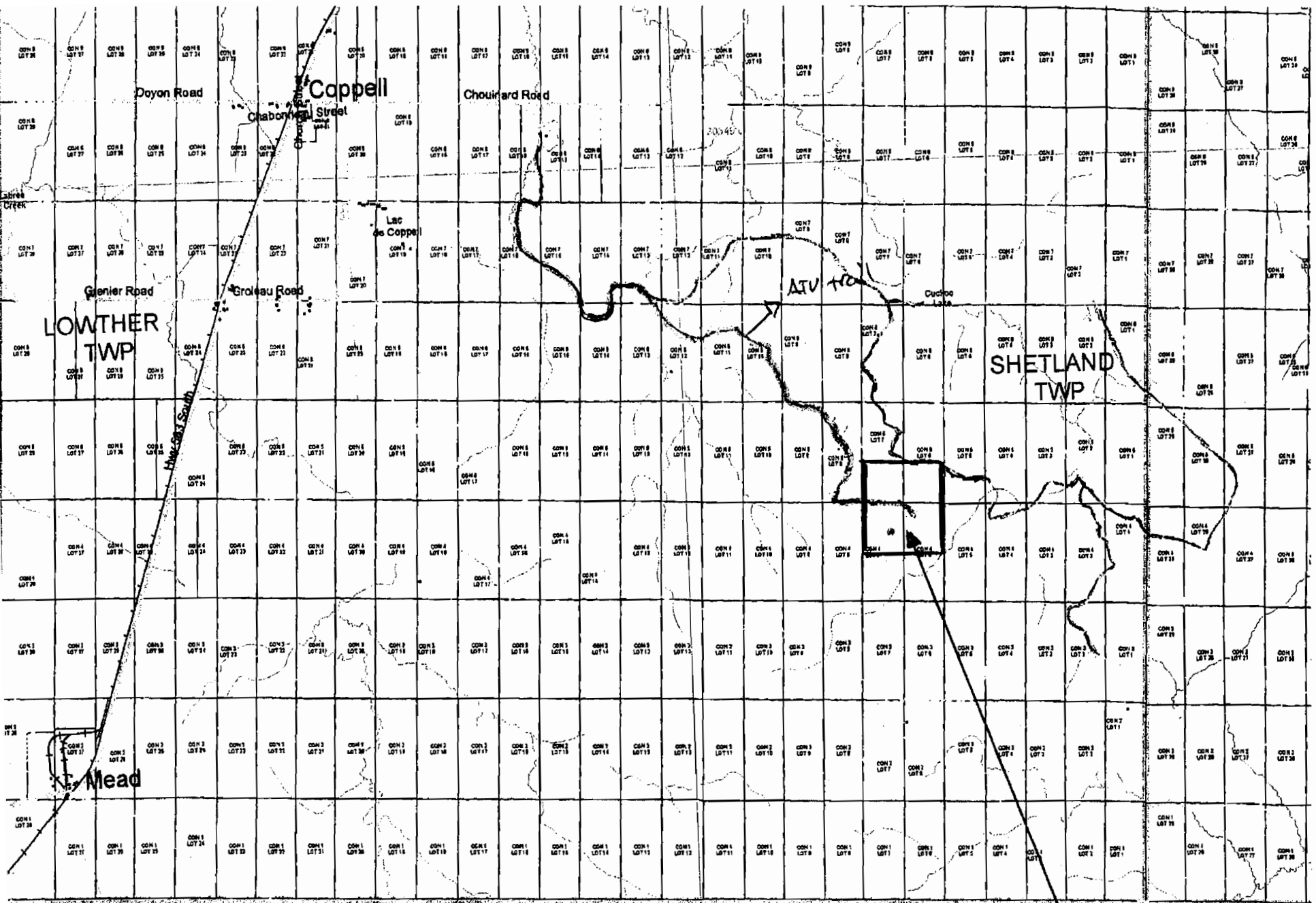


Figure 1

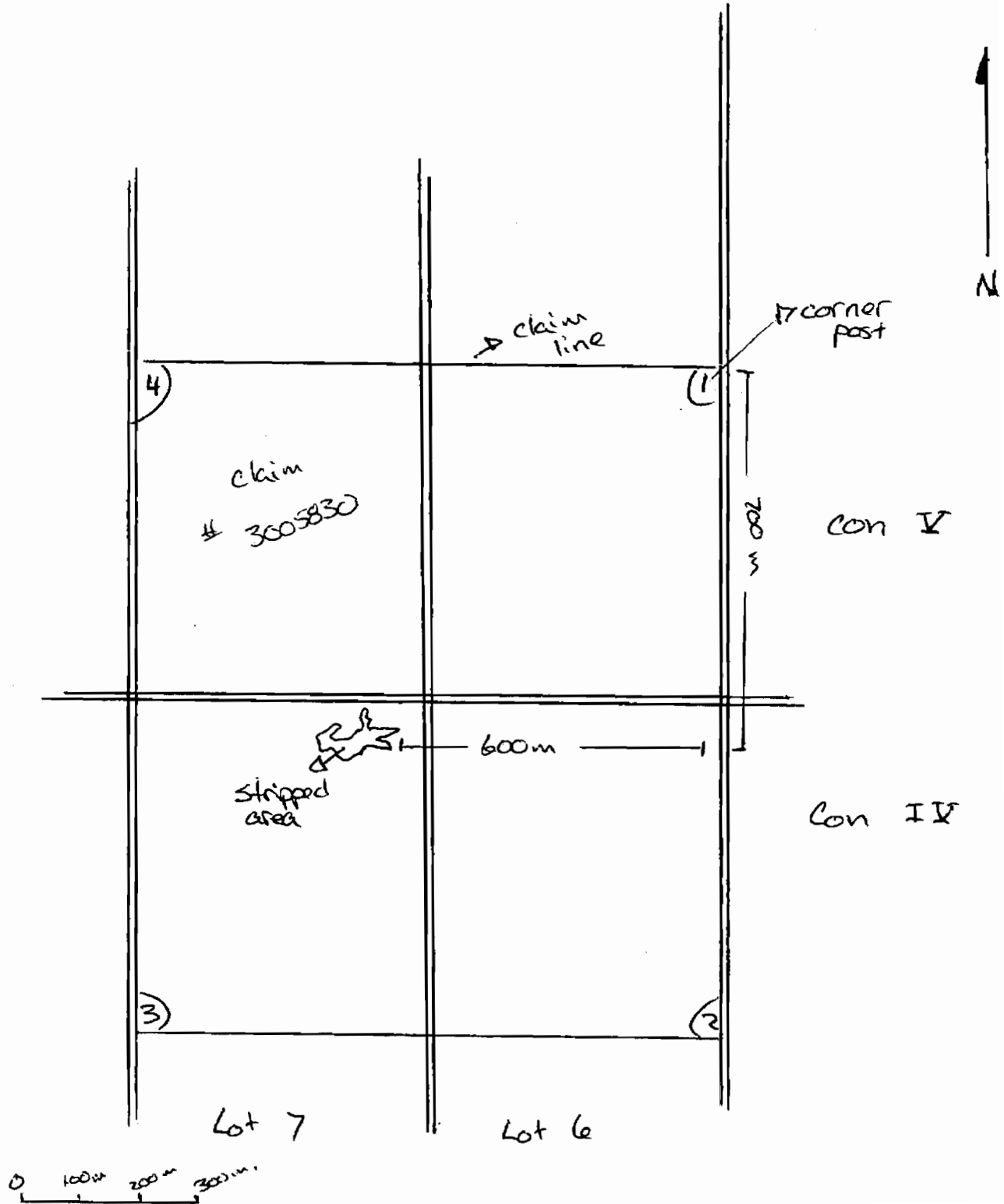


EBBS
TWP




claim #
3005830

Leather Twp.

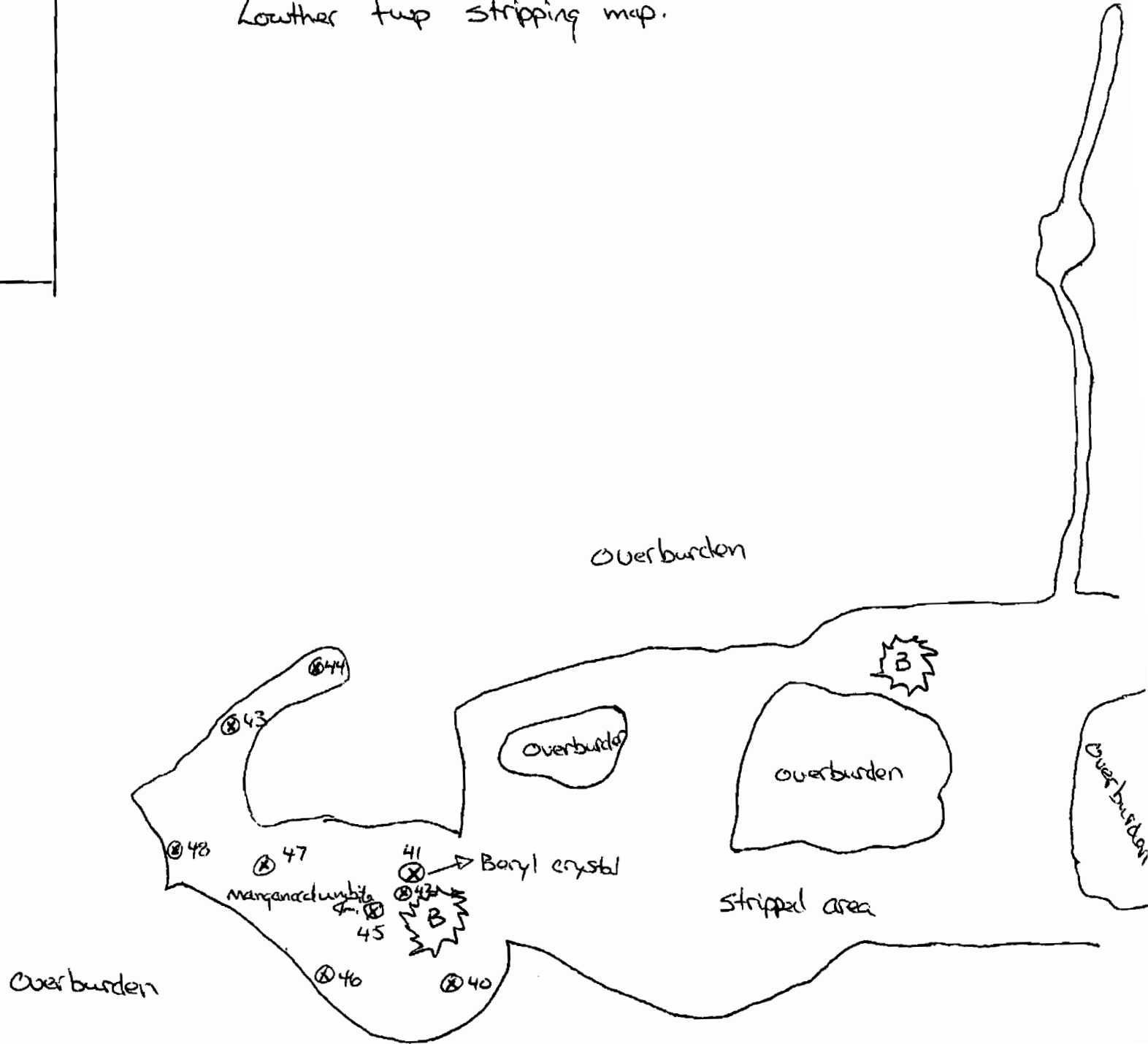
Fall 2006 Stripping location



Legend

- P-10  blasted pit
 -  sample location & number
 -  stripped area
- 0m 1m 2m scale

Lowther trap stripping map.



May 9 2007 09:50am
613 835 7525

Received
Lecours

09 May 07 09:52a



CERTIFICATE OF ANALYSIS

iPL 06L3967



200 - 11620 Horseshoe Way
 Richmond, B.C.
 Canada V7A 4V5
 Phone (604) 879-7878
 Fax (604) 272-0851
 Website www.ipl.ca

INTERNATIONAL PLASMA LABS LTD.
 ISO 9001:2000 CERTIFIED COMPANY

Client: **** CASH SALE ****
 Project: None Given

4 Samples

Ship# 4=Rock 1=Repeat

Print: Dec 28, 2006 Page 1 of 1
 [396718:00:11:60122806:002] Dec 21, 2006 Section 1 of 1

Sample Name	Type	Li ppm	Be ppm	Ta ppm	Ga ppm	Nb ppm
Low 41	Rock	128	0.18%	<4	<10	7
Low 42	Rock	111	0.12%	<4	<10	3
Low 45	Rock	54	37	3244	18	1.28%
Low 48	Rock	5	11	192	<10	307
RE Low 41	Repeat	124	0.17%	<4	<10	7

01 Aug 07 11:17a

Received
Lecours

Aug 1 2007 11:17am
613 835 7525

p.3

Minimum Detection 1 2 4 10 2
 Maximum Detection 10000 1000 10000 2000 2000
 Method AsyMuA AsyMuA ICPM ICPM ICPM
 —=No Test Ins=Insufficient Sample Del=Delay Max=No Estimate Rec=ReCheck m=x1000 %=Estimate % NS=No Sample



ALS Chemex
EXCELLENCE IN ANALYTICAL CHEMISTRY
 ALS Canada Ltd.

212 Brooksbank Avenue
 North Vancouver BC V7J 2C1
 Phone: 604 984 0221 Fax: 604 984 0218 www.alschemex.com

To: LECOURS EXPLORATION
 PO BOX 1001
 HEARST ON P0L 1N0

Page: 2 - A
 Total # Pages: 2 (A - F)
 Finalized Date: 19-OCT-2006
 Account: MYJ

Project: LOWTHER

CERTIFICATE OF ANALYSIS TB06086837

Sample Description	Method Analyte Units LOR	WEI-21 Recvd Wt. kg	ME-MS41r Ag ppm	ME-MS41r Al %	ME-MS41r As ppm	ME-MS41r Au ppm	ME-MS41r B ppm	ME-MS41r Ba ppm	ME-MS41r Be ppm	ME-MS41r Bi ppm	ME-MS41r Ca %	ME-MS41r Cd ppm	ME-MS41r Ce ppm	ME-MS41r Co ppm	ME-MS41r Cr ppm	ME-MS41r Cs ppm
		0.02	0.01	0.01	0.1	0.2	10	10	0.05	0.01	0.01	0.01	0.02	0.1	1	0.05
LOW-40		0.19	0.05	1.75	1.0	<0.2	<10	<10	0.98	0.03	0.04	2.86	3.82	2.0	9	0.89
LOW-41		0.19	0.07	0.10	1.1	<0.2	<10	<10	315.00	0.04	0.01	0.09	0.42	1.7	15	89.40
LOW-42		0.36	0.01	0.11	0.1	<0.2	<10	<10	222.00	0.67	0.01	0.06	0.15	0.6	9	47.50
LOW-43		0.38	0.03	0.22	0.3	<0.2	<10	<10	20.60	0.05	0.01	0.07	0.19	1.0	12	55.00
LOW-44		0.20	0.17	0.34	0.2	2.4	<10	10	5.50	1.41	0.02	12.20	31.60	0.4	4	20.90
LOW-45		0.25	0.02	0.10	0.2	<0.2	<10	<10	226.00	0.47	0.01	0.14	0.53	1.1	14	125.00
LOW-46		0.37	0.01	0.03	0.3	<0.2	<10	<10	5.66	0.08	0.01	0.05	0.17	0.5	12	3.28
LOW-47		0.54	<0.01	0.25	0.2	<0.2	<10	<10	6.39	0.45	0.02	0.64	19.10	0.5	8	10.60
LOW-48		1.31	0.01	0.14	0.1	<0.2	<10	<10	0.87	0.02	0.01	0.05	0.29	0.3	5	1.17

Comments: MEXRF06: Samples with low total were re-checked.

01 Aug 07 11:17a

Received Lecours

Aug 1 2007 11:17am
613 835 7525

p. 4



ALS Chemex
EXCELLENCE IN ANALYTICAL CHEMISTRY
 ALS Canada Ltd.

212 Brookbank Avenue
 North Vancouver BC V7J 2C1
 Phone: 804 984 0221 Fax: 804 984 0218 www.alschemex.com

To: LECOURS EXPLORATION
 PO BOX 1001
 HEARST ON P0L 1N0

Page: 2 - B
 Total # Pages: 2 (A - F)
 Finalized Date: 19-OCT-2006
 Account: MYJ

Project: LOWTHER

CERTIFICATE OF ANALYSIS TB06086837

Sample Description	Method Analyte Units LOR	ME-MS41r	ME-MS41r	ME-MS41r	ME-MS41r	ME-MS41r	ME-MS41r	ME-MS41r	ME-MS41r	ME-MS41r	ME-MS41r	ME-MS41r	ME-MS41r	ME-MS41r	ME-MS41r	
		Cu ppm	Fe %	Ga ppm	Ge ppm	Hf ppm	Hg ppm	In ppm	K %	La ppm	Li ppm	Mg %	Mn ppm	Mo ppm	Na %	Nb ppm
LOW-40		9.2	8.49	17.50	1.88	1.71	<0.01	0.069	0.01	0.8	66.7	0.11	28700	0.79	0.08	13.76
LOW-41		23.1	2.97	1.75	<0.05	0.07	<0.01	0.007	0.01	<0.2	42.4	0.01	243	2.37	0.02	1.12
LOW-42		4.3	1.26	1.52	<0.05	0.07	<0.01	0.005	0.03	<0.2	32.2	<0.01	239	0.49	0.04	1.05
LOW-43		9.3	1.11	2.78	<0.05	<0.02	<0.01	<0.005	0.12	<0.2	148.5	<0.01	191	1.49	0.03	1.40
LOW-44		3.2	0.76	8.09	0.07	5.98	<0.01	0.152	0.17	5.5	37.7	0.01	344	0.23	0.08	446.00
LOW-46		9.0	1.23	1.02	<0.05	0.12	<0.01	<0.005	0.04	<0.2	43.3	<0.01	103	1.67	0.02	17.76
LOW-48		3.4	0.81	0.47	<0.05	0.07	<0.01	<0.005	0.01	<0.2	2.9	<0.01	61	0.43	0.01	12.65
LOW-47		3.7	0.85	3.43	0.05	16.15	<0.01	0.031	0.07	3.4	21.4	0.01	305	0.67	0.11	129.00
LOW-48		1.8	0.47	1.18	<0.05	0.15	<0.01	<0.005	0.01	<0.2	1.5	<0.01	227	0.21	0.11	2.24

Comments: MEXRF06: Samples with low total were re-checked.

01 Aug 07 11:17a

Received
 Lecours

Aug 1 2007 11:18am
 613 835 7525

p.5



ALS Chemex
EXCELLENCE IN ANALYTICAL CHEMISTRY

ALS Canada Ltd.
 212 Brookbank Avenue
 North Vancouver BC V7J 2C1
 Phone: 604 984 0221 Fax: 604 984 0218 www.alschemex.com

To: LECOORS EXPLORATION
 PO BOX 1001
 HEARST ON P0L 1N0

Page: 2 - B
 Total # Pages: 2 (A - F)
 Finalized Date: 19-OCT-2006
 Account: MYJ

Project: LOWTHER

CERTIFICATE OF ANALYSIS TB06086837

Sample Description	Method Analyte Units LOR	ME-MS41r	ME-MS41r	ME-MS41r	ME-MS41r	ME-MS41r	ME-MS41r	ME-MS41r	ME-MS41r	ME-MS41r	ME-MS41r	ME-MS41r	ME-MS41r	ME-MS41r	ME-MS41r	
		Cu ppm	Fe %	Ga ppm	Ge ppm	Hf ppm	Hg ppm	In ppm	K %	La ppm	Li ppm	Mg %	Mn ppm	Mo ppm	Na %	Nb ppm
		0.2	0.01	0.05	0.05	0.02	0.01	0.005	0.01	0.2	0.1	0.01	5	0.05	0.01	0.05
LOW-40		9.2	8.49	17.60	1.98	1.71	<0.01	0.069	0.01	0.8	66.7	0.11	26700	0.79	0.08	13.76
LOW-41		23.1	2.97	1.75	<0.05	0.07	<0.01	0.007	0.01	<0.2	42.4	0.01	243	2.37	0.02	1.12
LOW-42		4.3	1.26	1.52	<0.05	0.07	<0.01	0.005	0.03	<0.2	32.2	<0.01	239	0.49	0.04	1.05
LOW-43		9.3	1.11	2.78	<0.05	<0.02	<0.01	<0.005	0.12	<0.2	148.5	<0.01	191	1.49	0.03	1.40
LOW-44		3.2	0.76	8.09	0.07	5.88	<0.01	0.162	0.17	5.6	37.7	0.01	344	0.23	0.08	446.00
LOW-45		9.0	1.23	1.02	<0.05	0.12	<0.01	<0.005	0.04	<0.2	43.3	<0.01	103	1.67	0.02	17.76
LOW-46		3.4	0.81	0.47	<0.05	0.07	<0.01	<0.005	0.01	<0.2	2.9	<0.01	61	0.43	0.01	12.85
LOW-47		3.7	0.85	3.43	0.05	16.15	<0.01	0.031	0.07	3.4	21.4	0.01	305	0.87	0.11	129.00
LOW-48		1.9	0.47	1.18	<0.05	0.15	<0.01	<0.005	0.01	<0.2	1.5	<0.01	227	0.21	0.11	2.24

Comments: MEXRF06: Samples with low total were re-checked.

01 Aug 07 11:17a

Received
 Lecours

Aug 1 2007 11:18am
 613 835 7525

p.5



ALS Chemex

EXCELLENCE IN ANALYTICAL CHEMISTRY

ALS Canada Ltd.

212 Brooksbank Avenue
North Vancouver BC V7J 2C1

Phone: 604 984 0221 Fax: 604 984 0218 www.alschemex.com

To: LECOURS EXPLORATION
PO BOX 1001
HEARST ON P0L 1N0

Page: 2 - C
Total # Pages: 2 (A - F)
Finalized Date: 19-OCT-2006
Account: MYJ

Project: LOWTHER

CERTIFICATE OF ANALYSIS TB06086837

Sample Description	Method Analyte Units LOR	ME-MS41r	ME-MS41r	ME-MS41r	ME-MS41r	ME-MS41r	ME-MS41r	ME-MS41r	ME-MS41r	ME-MS41r	ME-MS41r	ME-MS41r	ME-MS41r	ME-MS41r	ME-MS41r	ME-MS41r
		Ni	P	Pb	Rb	Re	S	Sb	Sc	Se	Sn	Sr	Ta	Te	Th	Ti
		ppm	ppm	ppm	ppm	ppm	%	ppm	ppm	ppm	ppm	ppm	ppm	ppm	ppm	ppm
		0.2	10	0.2	0.1	0.001	0.01	0.05	0.1	0.2	0.2	0.2	0.01	0.01	0.2	0.005
LOW-40		3.5	30	4.4	1.1	0.001	0.02	0.20	115.5	2.8	48.1	1.8	0.78	0.02	20.1	0.019
LOW-41		6.1	10	1.4	7.0	<0.001	0.02	0.16	1.2	<0.2	1.5	2.4	<0.01	0.01	0.6	<0.005
LOW-42		2.4	<10	1.0	23.4	<0.001	<0.01	0.07	1.1	<0.2	1.3	3.3	0.01	<0.01	0.3	<0.005
LOW-43		3.8	10	1.2	51.3	<0.001	<0.01	0.10	0.4	<0.2	1.5	4.4	<0.01	<0.01	<0.2	<0.005
LOW-44		2.5	10	162.0	113.0	<0.001	<0.01	0.48	2.4	1.4	18.0	8.0	43.60	0.01	53.6	0.007
LOW-45		4.6	<10	2.9	18.3	<0.001	<0.01	0.13	0.2	<0.2	1.2	3.2	0.28	0.01	0.7	<0.005
LOW-46		2.3	<10	1.1	2.7	<0.001	<0.01	0.10	0.2	<0.2	0.6	2.7	0.05	<0.01	0.2	<0.005
LOW-47		2.0	20	13.3	44.2	<0.001	<0.01	0.34	8.8	0.4	12.6	6.0	0.81	0.01	27.7	0.008
LOW-48		1.5	10	0.7	6.8	<0.001	<0.01	<0.05	0.5	<0.2	0.8	2.0	0.02	<0.01	0.6	<0.005

Comments: MEXRF06: Samples with low total were re-checked.

01 Aug 07 11:18a

Received
Lecours

Aug 1 2007 11:18am
613 835 7525

P.6



ALS Chemex

EXCELLENCE IN ANALYTICAL CHEMISTRY
ALS Canada Ltd.

212 Brooksbank Avenue
North Vancouver BC V7J 2C1
Phone: 604 984 0221 Fax: 604 984 0218 www.alschemex.com

To: LECOURS EXPLORATION
PO BOX 1001
HEARST ON P0L 1N0

Page: 2 - D
Total # Pages: 2 (A - F)
Finalized Date: 19-OCT-2006
Account: MYJ

Project: LOWTHER

CERTIFICATE OF ANALYSIS TB06086837

Sample Description	Method Analyte Units LOR	ME-MS41r	ME-MS41r	ME-MS41r	ME-MS41r	ME-MS41r	ME-MS41r	ME-MS41r	ME-MS41r	ME-MS41r	ME-MS41r	ME-MS41r	ME-MS41r	ME-MS41r	ME-MS41r	
		Tl	U	V	W	Y	Zn	Zr	Dy	Er	Eu	Gd	Ho	Lu	Nd	Pr
		ppm	ppm	ppm	ppm	ppm	ppm	ppm	ppm	ppm	ppm	ppm	ppm	ppm	ppm	ppm
		0.02	0.05	1	0.05	0.05	2	0.5	0.05	0.03	0.03	0.05	0.01	0.01	0.1	0.03
LOW-40		<0.02	22.70	18	0.48	232.00	119	32.8	29.80	22.00	0.08	5.13	6.50	5.94	2.3	0.58
LOW-41		0.03	0.63	9	0.11	1.85	27	5.7	0.29	0.21	<0.03	0.07	0.06	0.05	0.2	0.05
LOW-42		0.12	1.04	2	0.06	1.51	15	3.2	0.20	0.15	<0.03	0.05	0.04	0.04	0.1	<0.03
LOW-43		0.45	0.48	2	0.08	0.47	14	1.4	0.06	0.04	<0.03	<0.05	0.01	0.01	0.1	0.03
LOW-44		0.75	288.00	2	0.62	59.50	28	65.5	13.50	6.11	0.25	10.05	2.30	0.64	19.2	4.89
LOW-45		0.14	5.43	1	0.15	0.92	9	5.0	0.19	0.09	<0.03	0.15	0.03	0.01	0.3	0.08
LOW-46		<0.02	1.32	<1	0.10	0.43	10	3.2	0.08	0.04	<0.03	0.05	0.01	0.01	0.1	0.03
LOW-47		0.24	58.10	1	0.31	24.10	16	209.0	4.35	2.62	0.08	2.91	0.84	0.55	7.7	2.28
LOW-48		<0.02	1.42	<1	<0.05	1.40	3	3.0	0.28	0.07	<0.03	0.09	0.03	0.01	0.1	0.04

Comments: MEXRF06: Samples with low total were re-checked.

01 Aug 07 11:18a

Received
Lecours

Aug 1 2007 11:18am
613 835 7525

P.7



ALS Chemex

EXCELLENCE IN ANALYTICAL CHEMISTRY

ALS Canada Ltd.

212 Brooksbank Avenue

North Vancouver BC V7J 2C1

Phone: 604 984 0221 Fax: 604 984 0218 www.alschemex.com

To: LECOURS EXPLORATION

PO BOX 1001

HEARST ON P0L 1N0

Page: 2 - E

Total # Pages: 2 (A - F)

Finalized Date: 19-OCT-2006

Account: MYJ

Project: LOWTHER

CERTIFICATE OF ANALYSIS TB06086837

Sample Description	Method Analyte Units LOR	ME-MS41r	ME-MS41r	ME-MS41r	ME-MS41r	ME-XRF06	ME-XRF06	ME-XRF06	ME-XRF06	ME-XRF06	ME-XRF06	ME-XRF06	ME-XRF06	ME-XRF06	ME-XRF06	ME-XRF06
		Bm	Tb	Tm	Yb	SiO2	Al2O3	Fe2O3	CaO	MgO	Na2O	K2O	Cr2O3	TiO2	MnO	P2O5
		ppm	ppm	ppm	ppm	%	%	%	%	%	%	%	%	%	%	%
		0.03	0.01	0.01	0.03	0.01	0.01	0.01	0.01	0.01	0.01	0.01	0.01	0.01	0.01	0.01
LOW-40		1.89	3.09	5.10	40.70	47.19	17.59	17.74	0.40	0.55	2.60	0.09	0.03	0.14	12.78	0.03
LOW-41		0.06	0.04	0.05	0.36	65.48	17.11	4.51	0.02	<0.01	1.54	0.11	<0.01	0.05	0.04	0.01
LOW-42		<0.03	0.02	0.03	0.27	66.30	17.98	2.07	0.03	0.01	2.37	0.41	<0.01	0.02	0.04	0.03
LOW-43		0.03	0.01	0.01	0.08	65.66	23.79	1.82	0.04	0.02	1.84	4.21	<0.01	0.01	0.14	0.02
LOW-44		9.94	2.65	0.94	5.35	44.85	14.45	2.89	0.24	0.14	5.02	2.09	<0.01	0.35	3.60	0.03
LOW-45		0.13	0.04	0.01	0.09	65.59	17.55	1.93	0.02	<0.01	1.57	0.57	<0.01	0.02	0.03	0.01
LOW-46		0.05	0.02	0.01	0.05	98.95	0.25	1.25	0.02	<0.01	0.12	0.08	<0.01	0.01	0.01	0.02
LOW-47		3.01	0.75	0.51	3.81	64.88	20.72	1.78	0.38	<0.01	10.07	0.74	<0.01	0.19	0.27	0.04
LOW-48		0.06	0.04	0.01	0.08	67.28	19.80	0.87	0.30	<0.01	10.58	0.28	<0.01	0.08	0.21	0.02

Comments: MEXRF06: Samples with low total were re-checked.

01 Aug 07 11:19a

Received
Lecours

Aug 1 2007 11:19am
613 835 7525

P.8



ALS Chemex

EXCELLENCE IN ANALYTICAL CHEMISTRY

ALS Canada Ltd.

212 Brookbank Avenue
North Vancouver BC V7J 2C1

Phone: 604 984 0221 Fax: 604 984 0218 www.alschemex.com

To: LECOURS EXPLORATION
PO BOX 1001
HEARST ON P0L 1N0

Page: 2 - F
Total # Pages: 2 (A - F)
Finalized Date: 19-OCT-2008
Account: MYJ

Project: LOWTHER

CERTIFICATE OF ANALYSIS TB06086837

Sample Description	Method Analyte Units LOL	ME-XRF06	ME-XRF06	ME-XRF06	ME-XRF06
		SrO	BaO	LOI	Total
		%	%	%	%
		0.01	0.01	0.01	0.01
LOW-40		0.01	0.01	-0.29	98.86
LOW-41		0.01	0.01	1.87	90.77
LOW-42		0.01	<0.01	1.92	91.17
LOW-43		0.02	0.01	0.82	98.19
LOW-44		0.01	0.01	1.08	74.73
LOW-45		0.01	0.01	1.48	88.79
LOW-46		0.01	<0.01	0.34	99.05
LOW-47		0.01	<0.01	0.91	99.99
LOW-48		0.02	0.01	0.52	99.95

Comments: MEXRF06: Samples with low total were re-checked.

01 Aug 07 11:19a

Received
Lecours

Aug 1 2007 11:19am
613 835 7525

P.9